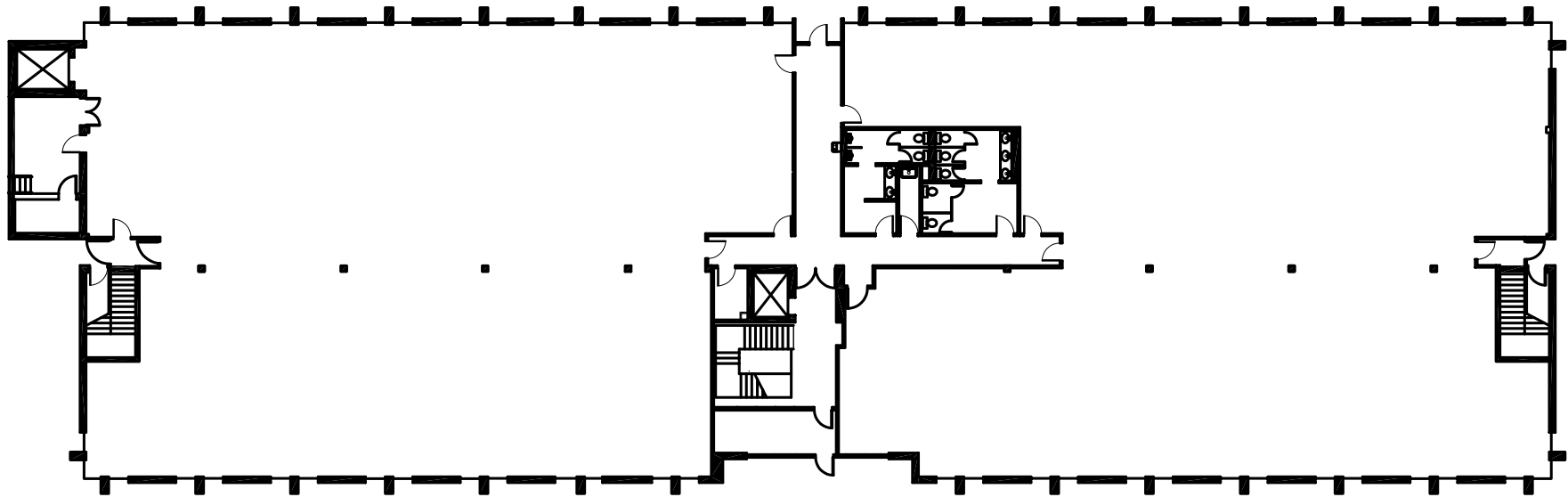




DISTRICT
AT CHAMBLEE



*This space has not been field verified by NELSON.



Peter McGuone (404) 923-1203
Parker Nelson (404) 812-5089

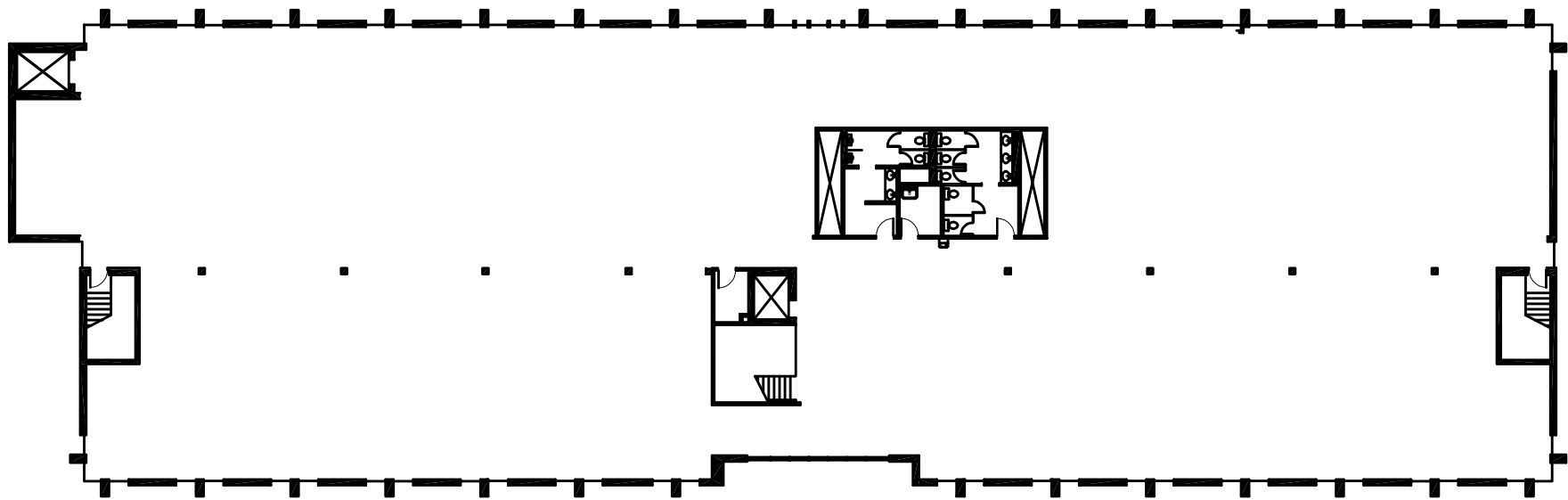


The Flats Bldg 2980 • 2980 Brandywine Rd • First Floor • 19,632 RSF

Marketing Diagram



DISTRICT
AT CHAMBLEE



*This space has not been field verified by NELSON.



Peter McGuone (404) 923-1203
Parker Nelson (404) 812-5089

NELSON The Flats Bldg 2980 • 2980 Brandywine Rd • Second Floor • 20,119 RSF Marketing Diagram