

SOHN FINE ART



Jonathan Prince

Fluidity of Light

On view at Sohn Fine Art July 1 - September 5

Reception Saturday, August 20, 4:00 - 6:00

Elemental Matters

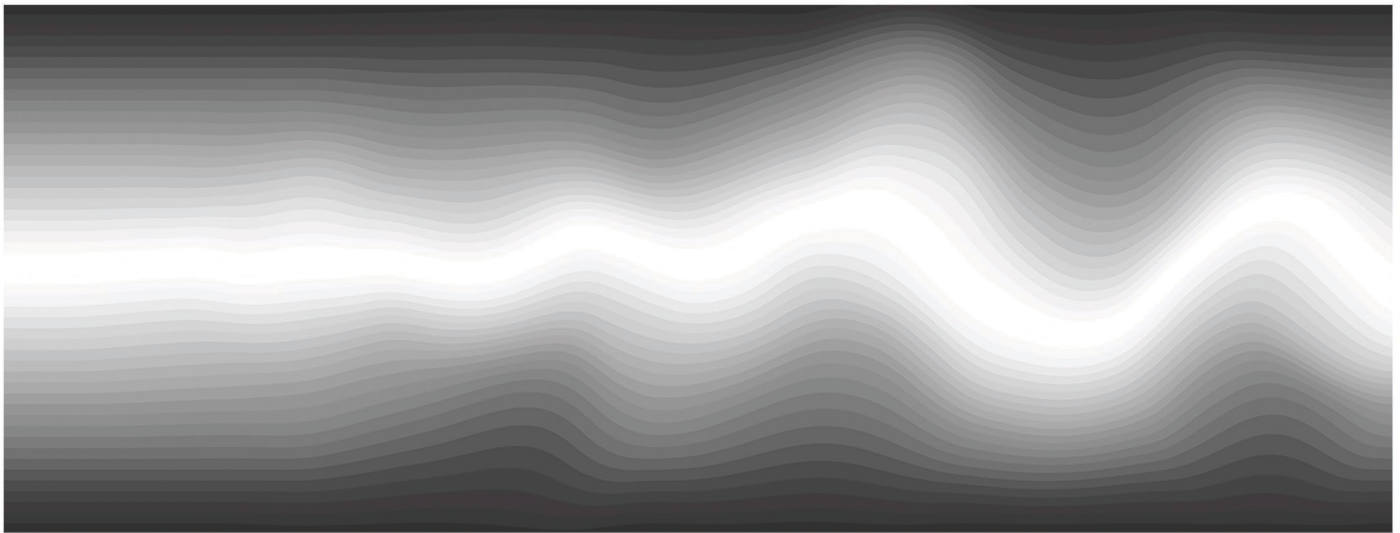
Companion exhibit on view at Chesterwood July 1 - October 24
4 Williamsville Road, Stockbridge, MA | chesterwood.org

Reception Friday, July 29, 5:00 - 7:00

Artist & Curator Tour during ArtWeek Sunday, September 18, 4:00

SOHN FINE ART

69 Church Street, Lenox, MA | info@sohnfineart.com | www.sohnfineart.com | 413-551-7353



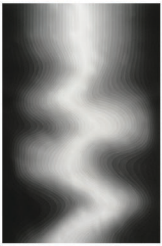
Director of Sohn Fine Art and curator, Cassandra Sohn is pleased to present two curated solo exhibitions of sculptures and works on paper by Berkshire-based artist, Jonathan Prince. "Fluidity of Light" is on view at her gallery, Sohn Fine Art in Lenox, MA. "Elemental Matters" is on view throughout the grounds at Chesterwood, a site for the National Trust of Historic Preservation, in Stockbridge, MA.

"Fluidity of Light" at Sohn Fine Art includes Jonathan Prince's smaller sculptures as well as his mixed-media works on paper from his Turbulence series. Prince's works continuously push the boundaries of how materials can behave. His forms contain both foundation and fluidity. The sculptures included in this exhibition are as much about how light interacts with the piece as the sculptural form itself. As Prince states, "These pieces are really about the liquidity of light rather than the liquidity of matter." They are works of meditation in both process and concept. Prince's ongoing investigation of spirituality is echoed in the pair of reflective liquid state sculptures on view titled "Inhale" and "Exhale".

Works on paper and sculptures on display from the Turbulence series explore the ways in which an external force can exert enough energy to disrupt what is seemingly perfect and organized. Each of these pieces begin with a perfected geometric form. Through varying degrees of external pressure, movement and human interaction, the forms are compressed and distorted in response. Sculptures from the Liquid State series explore extended conversations around geometric forms that focus our attention to the liquidity of light rather than of matter. Each work's curvatures dance with light to create a liquid appearance.

Prince's solo exhibition at Chesterwood "Elemental Matters" focuses on the mutability of metal. Included are Prince's most recent metal works, which are often mistaken for wood, stone or liquid. This fluidity of matter explores the idea that things we see may not always be what they appear. Though monumental in structure, rooted in perfect geometry and made of metal, Prince's sculptures possess an innate vulnerability. Formally, the liminal sculptures mimic nature but they contextually explore our connection between our inner and outer selves. Cracks and breaks remind us of the fragility in nature and humanity. When the outer form is broken, we discover something beautiful and unique on the inside. Each has a distinct story and their placements on the grounds of Chesterwood help bring those narratives to life.

Born in New York City, Prince has been living and working in The Berkshires of Massachusetts for the last two decades. After an extensive career in medicine, as well as having spearheaded various companies dedicated to the advancement of internet and media technologies, Prince returned to his passion for sculpture in 2002. His background in science, technology, and medicine are uniquely reflected in his practice as a sculptor, as each work, both in methods of fabrication and precision, bear the hallmarks of these fields of study.



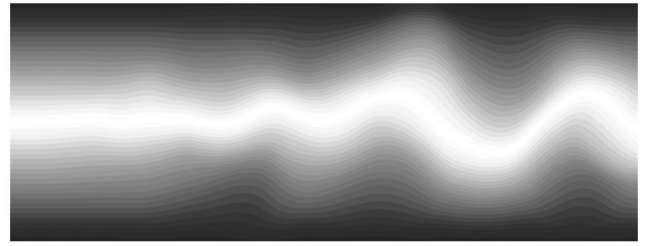
Turbulence III

64" x 42" Pigment, Graphite and Sumi Ink on Archival Paper
Unique
Framed 67.5" x 46.5": \$12,500



Turbulence IV

64" x 42" Pigment, Graphite and Sumi Ink on Archival Paper
Unique
Framed 67.5" x 46.5": \$12,500



Turbulence VIII

42" x 100" Pigment, Graphite and Sumi Ink on Archival Paper
Unique
Framed 105.5" x 44.5": \$18,000



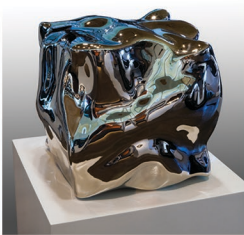
Turbulence IV (Sculpture)

96" x 8" x 7" High Chromium
Stainless Steel / Transparent Color
Unique
\$160,000



Shatter Stainless

14.5" x 8.5" x 8.5" High Chromium
Stainless Steel
Unique
\$60,000



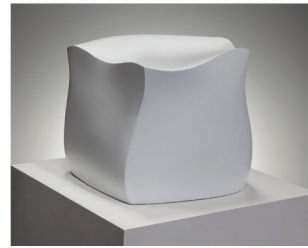
Liquid State (Inhale)

22" x 22" x 22" High Chromium
Stainless Steel
Unique
\$160,000



Liquid State (Exhale)

22" x 22" x 22" High Chromium
Stainless Steel
Unique
\$160,000



Jello (White)

16" x 17" x 17" Aluminum /
Automotive Paint
Unique
\$50,000



Shatter Series

8" x 8" x 8" Stainless Steel /
Automotive Paint
Unique
Each \$30,000
Full Collection of Three \$80,000



Jello Spectrum

6" x 6" x 6" High Chromium Stainless Steel / Tinted
Clear Urethane Color
Unique
Each \$24,000
Full Collection of Seven \$150,000



*"Creativity is the foundational element of my life and spiritual practice.
I explore the ideas that I'm investigating and look for ways to convert them to form." - Jonathan Prince*

Jonathan Prince

b. New York City

For sculptor Jonathan Prince, art is a journey that contemplates science, technology and an ongoing investigation of spirituality. His work balances both precision and imperfection, congruent with the inevitable dualities found in life. Through stretching the limitation of his materials, Prince finds possibility within vulnerability - beauty in the chaos.

Born in New York City, Prince has been living and working in The Berkshires of Massachusetts for the last two decades. As a young teenager, Prince was introduced to cubist sculptor Jacques Lipchitz, whom he apprenticed with on weekends. He consequently built a studio in his parent's basement where he taught himself sculptural methods, taking cues from some of the sculpture greats; Jean Arp, Barbara Hepworth, Isamu Noguchi, and Constantin Brancusi. Despite his early interest in sculpture, Prince's prowess for science and technology led him to become a maxillofacial surgeon.

After an extensive career in medicine, as well as having spearheaded various companies that worked at advancing the development of internet and media technology, Prince turned to his passion for sculpture once again in 2002. His background in science, technology, and medicine are uniquely reflected in his practice as a sculptor, as each work, both in methods of fabrication and precision, bear the hallmarks of these fields of study.

Selected Public & Private Collections

The Eli and Edythe Broad Art Museum at MSU

The Joseph M. Cohen Family Collection

The Julie and Edward J. Minskoff Collection

The Bringham and Women's Hospital

ExxonMobil Corporation

PricewaterhouseCoopers

Candy and Candy, London

The Park Tower Group