



HOME IS WHERE
THE HEART IS

THE KOMERA LEADERSHIP CENTER CAPITAL CAMPAIGN

HOME IS NOT WHERE YOU ARE FROM, BUT WHERE YOU BELONG

At Komera, we envision a world where our scholars, and the community members surrounding them, will have a place to call home—a place that you belong to, where you feel the love and support of others. And a place that stands as a beacon a hope for all.

At no other time has support for young women been more central to the goal of making our world a better place. We need the next generation of female learners and leaders like never before as we aspire to drive holistic and sustainable societal change.

Komera has identified these young women in our community, and we believe in the power of their future. Let's give that future a home in Rwanda. **Let's build the Komera Leadership Center together.**

“When no one else cared, Komera became my family. The students are my sisters and the staff have taught me life lessons. Komera is my home.”

—Janviere, Komera University Student





A HOME FOR EDUCATION

Currently in Rwanda, only 18% of students graduate from secondary school, and only 8% of tertiary-age youth are enrolled in tertiary education⁽¹⁾. Lower secondary education (Grades 7-9) completion rates are at 33%. **Komera boasts a 100% graduation rate from secondary school over the past five years, and 61% of our students go on to University, developing into leaders of their communities and country.**

While the Government of Rwanda has made huge progress towards universal primary education, schools are crowded and after-school programs are needed to help young boys and girls access the services that they need in order to excel. The Komera Leadership Center is poised to fill this gap.



“Before joining Komera, going to school was so challenging. I could hardly get school supplies. There were times I thought I would be forced to drop out. It was when Komera came into my life that there appeared a solution. I studied hard and completed secondary school and am now in University.”

—Solange, Komera University student



(1) Future Drivers of Growth in Rwanda Innovation, Integration, Agglomeration, and Competition World Bank Group Government of Rwanda

Educational programming at the Komera Leadership Center will focus on early childhood development programs, after school and weekend interventions for primary school, and secondary school supplemental programs.

EARLY CHILDHOOD DEVELOPMENT PROGRAMS:

In order to support true educational growth, children need access to early childhood development. Komera will engage mothers, fathers and their children in innovative community programs.

Targeted support for young mothers and fathers

Opportunity to partner with the Government of Rwanda on ECD initiatives



AFTER SCHOOL AND WEEKEND CLASSES: This center will enable us to provide support to multiple grade levels across schools in Rwinkwavu, supporting over 5,000 students.

State of the art classrooms that supports learner centered pedagogy and growth

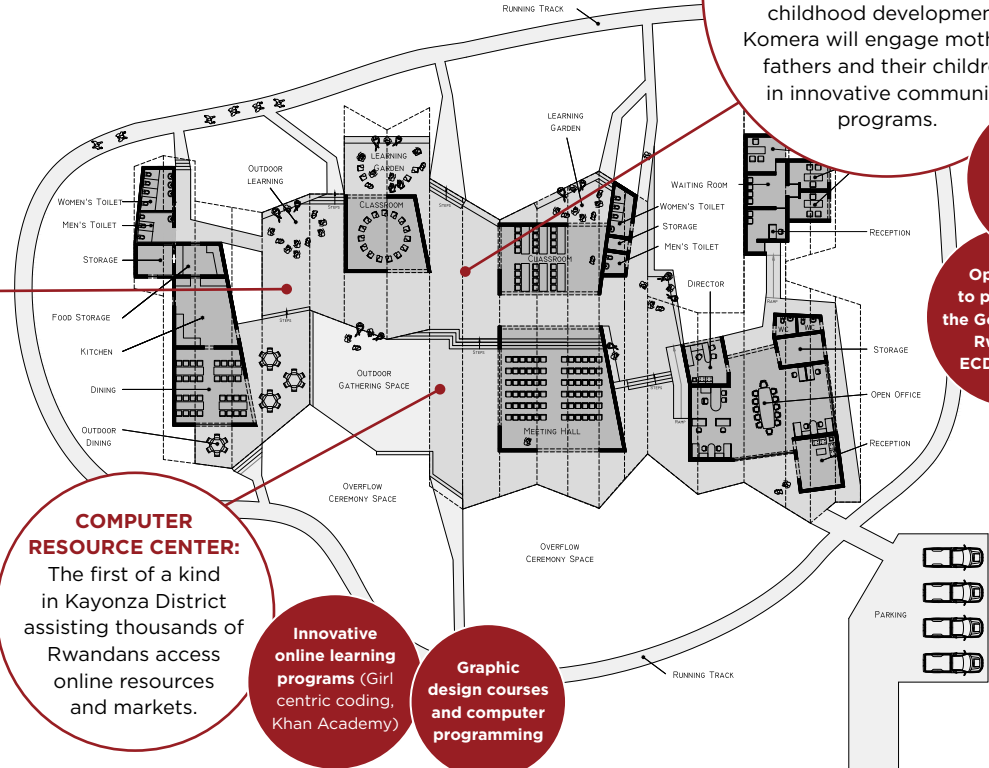
Specialized teacher training impacting over 1,000 educators and 10,000 students

COMPUTER RESOURCE CENTER:

The first of a kind in Kayonza District assisting thousands of Rwandans access online resources and markets.

Innovative online learning programs (Girl centric coding, Khan Academy)

Graphic design courses and computer programming





A HOME FOR COMMUNITY

Komera launched **the Komera Guardian Cooperative** with one business. Today, over 50 businesses are supported across the Kayonza District. Over the past decade we have worked with over 5,000 community members in trainings, community activation events, and one-on-one support. Komera is seen as a leader in helping families solve problems, start businesses and support the development of their children.

91% of parents within the Komera Cooperative saw improvements in their home life by constructing or rehabilitating of their homes, building toilets, creating safe and clean kitchen areas, and utilizing solar energy on their homes.



“Komera provided Solange and my family with hope. Today, I am one of the leaders of the Guardian Cooperative and help others in my community develop their businesses to better support their families.”

— Jean Baptiste Twizeyimana

Community Programs within the Komera Leadership Center will support the 29,000 people living in Rwinkwavu sector. Programs will focus on small business development training, completion of secondary school for older students, and a market to sell local products.

A MARKET FOR COMMUNITY TRADE:

The center will provide much needed local markets to help develop opportunities for business growth and trade.

Access to markets for 5,000 community members on a monthly basis

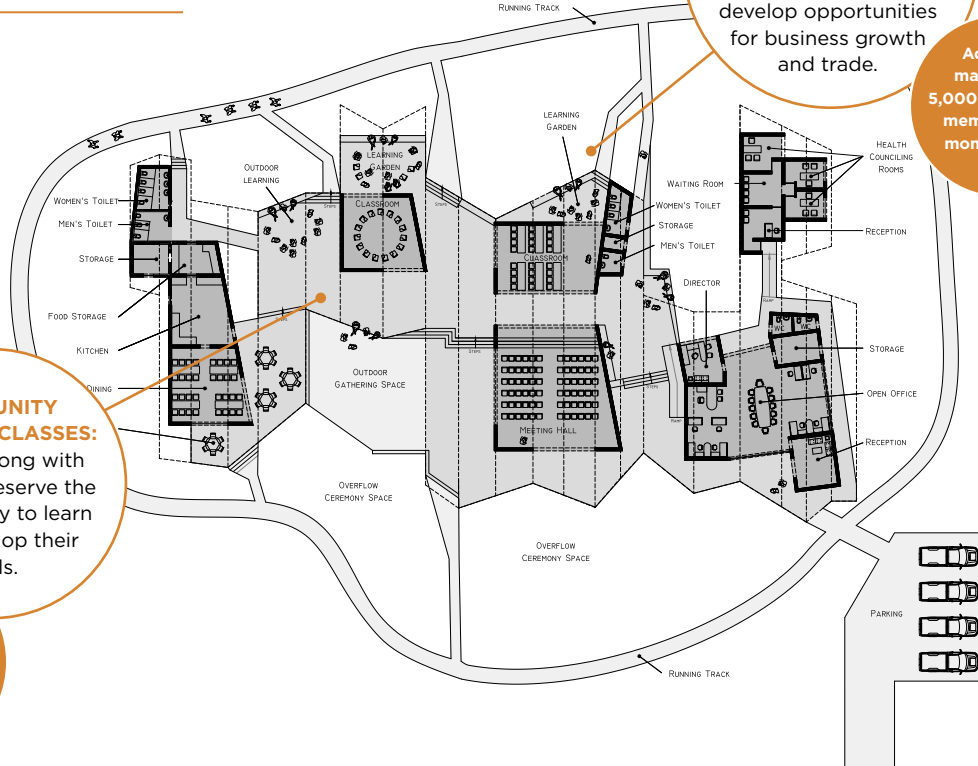


COMMUNITY BUSINESS CLASSES:

Parents along with students deserve the opportunity to learn and develop their skills.

Assist secondary school graduates to access small business training opportunities and savings groups

Community classes providing over 5,000 parents with additional learning opportunities





A HOME FOR HEALTH

Globally about 2.5 million girls aged 15 or younger give birth every year. Complications from childbirth or pregnancy are the second highest cause of death for girls aged 15-19. Teenage pregnancy rates in Rwanda have increased from 7.3% in 2015 to over 12% in 2016.⁽²⁾

At Komera, we are addressing this issue at the community level. We have helped 75% of our teen mothers access contraceptives through an innovative community based mentorship program.

We are ready to expand on our success through our Women and Girls Health Program. Young women need a safe and private space to ask questions, access services and make decisions about their own bodies. Komera will reach over 25,000 young women with critical sexual and reproductive health services over the next 10 years.



“I am so grateful for Komera program and yoga sport because it is a good time for us to be happy, love ourselves and focus for better future.”

—Olive, Participant in our Teen Mother Program, age 18



(2) Plan International; 2017, NISR; 2016

The Women and Girls Health Program at the Komera Leadership Center will reach over 25,000 girls over the next 10 years. Young women will receive access to peer health counselors and nurses that will teach them about their rights and health choices. Teen mothers will be able to access services and learn about the health and well-being of their children.

A COMMUNITY LEARNING GARDEN:
Where community members can educate themselves on good nutrition and farming techniques



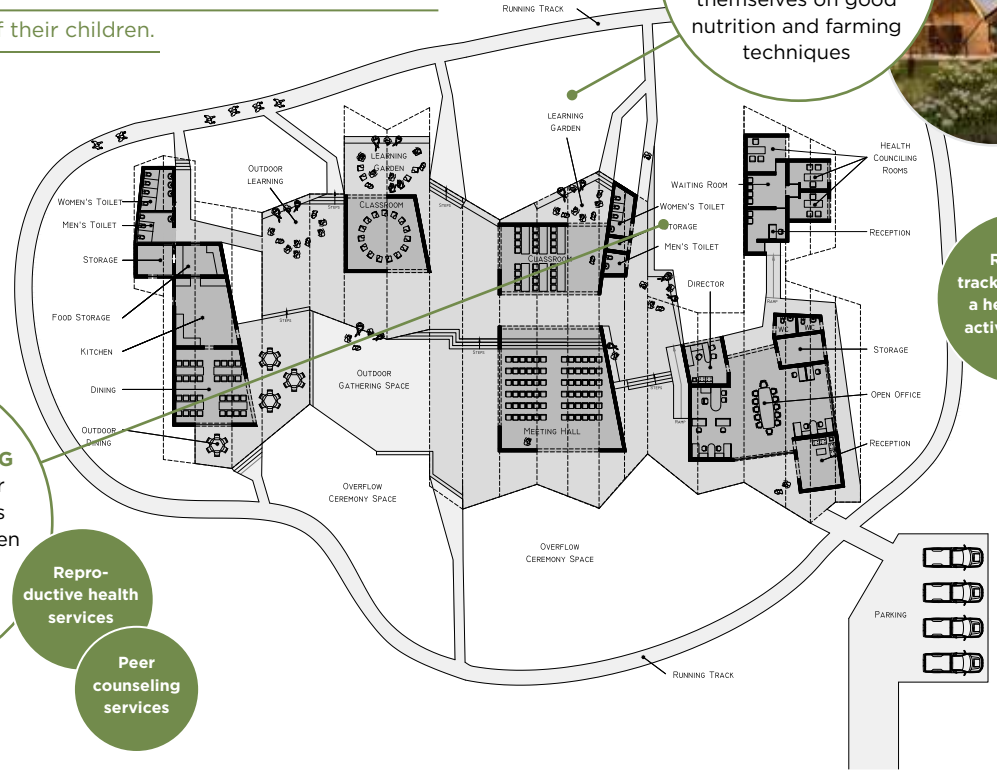
THE KOMERA HEALTH COUNSELING CENTER: A space for girls and lead by girls providing young women with counseling and services they need to thrive.

Community advocates to escort young women to the services they need

Reproductive health services

Peer counseling services

Running track promoting a healthy and active lifestyle





WHY NOW?

Komera has matured into a true agent of and advocate for change, working with Rwandans to develop sustainable pathways toward opportunity. Empowering adolescent girls and their communities to excel is making a difference.

Over the past ten years, our efforts to affect holistic and sustainable change have helped change the landscape in rural Rwanda. We at Komera now stand ready to significantly broaden our reach and deepen our impact, in order to inspire a generation of learners and leaders like never before.

“Don’t let someone else write your story for you. Your future is in your hands!”

— Valerie, Komera Scholar



WHY KOMERA?

Komera was founded in Rwanda over ten years ago. We have supported over 250 students in secondary school and 54 students in University, and we have reached over 5,000 community members through small business development, community-based advocacy, and economic support.

Komera has proven that a 360-degree approach to our work has been effective—it truly does take a village. Because of our deep understanding of what it takes to drive meaningful change for young women and those around them, we believe that we are best positioned to take on the building of this home as the heart of our community.

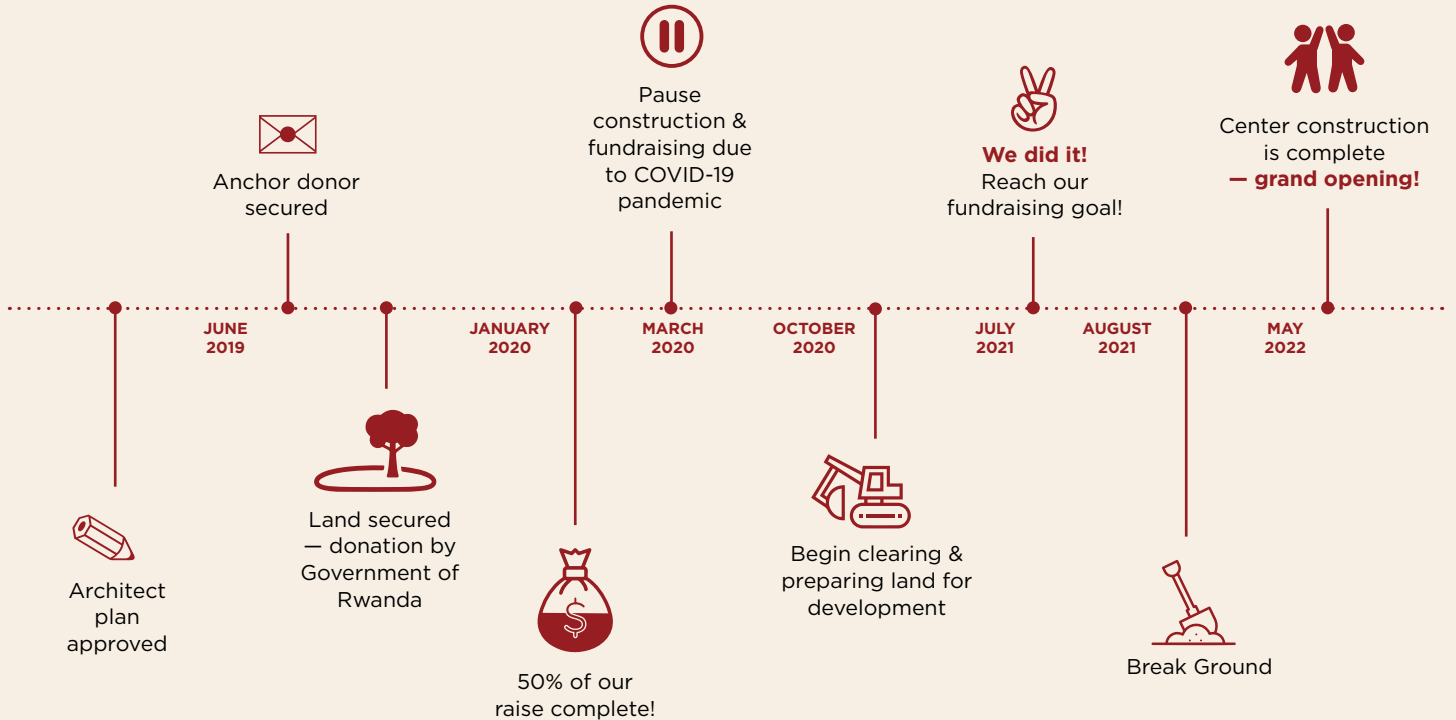
“We believe in the dreams of young women and invest in their potential. Change will not happen overnight, change will only happen as we walk in solidarity with those we serve.”

—Margaret Butler, Founder, Komera





HOW WE'LL GET THIS DONE





BE A PARTNER IN CHANGE

Donate to our capital campaign.

Make a lasting mark on the advancement of our young women and surrounding communities in Rwanda.

Become an ambassador.

Join our efforts to promote the importance of this work and inspire others to contribute to our campaign.

“Through support from Komera’s business training program, I was able to create a business which ended up helping me rebuild my home. Komera now needs a home”

— Mama Valerie, Business owner and Komera parent.





*Rwanda is the heart of Africa.
Let's make a home where the heart is.*

THANK YOU!

www.komera.org/leadershipcenter

CONTACT US:

margaret@komera.org



