

AUGUST 2020

"Haddon Rig"
2358 Marthaguy Road
Warren NSW 2824

Telephone: 02 6847 4405
Mobile: 0429 662 226
Web: www.haddonrig.com.au



HADDONRIG

2020 CALENDAR:

AUGUST

Thursday 20th

Haddon Rig Open Day – Haddon Rig

Tuesday 25th – Wednesday 26th

Dubbo Show – Dubbo Showground

SEPTEMBER

Thursday 10th

Haddon Rig 2-Tooth On-Property Sale

2-TOOTH SALE:

140 MERINOS

90 POLL MERINOS

ON-PROPERTY AND ONLINE

Interfaced with



www.haddonrig.com.au

Visit our website for all updated news and to download upcoming Ram Sale Catalogues.

Dear Merino Breeder,

The Central West has finally come out of a prolonged and trying drought – with many farms looking to restock, repair and consolidate going forward. We sincerely hope that you also have had favourable rains and a good lambing season to kick start recovery!

We would like to thank our clients who stuck with their breeding program and supported the Stud. We are focussed on rebuilding our breeding stock, maximising returns from our sheep and ensuring your profitability. We are now better prepared for the next dry time with containment pens built, expanded feedlots and a drought-proof stock watering system. We have kept our core breeding stock and are proud our ewes averaged 96% lambs marked to ewes joined, the top mob of Stud twin bearing ewes marked 166% on ewes scanned.

We ensure our clients have access to the best genetics by;

- Investing in 3 top Sires from Poll Boonoke and 330 Moorundie Poll ewes to increase the supply and quality of our Poll Stud
- Expanding our AI and ET programs in both Studs
- Purchasing Clipex sheep handling equipment to allow better sheep husbandry and recording of Stud stock

The sheep industry is still profitable and the wool market (at 1120c) should regain some lost ground once Phase Two of COVID has passed and Winter sets into the Northern hemisphere. The lamb price has eased a little but still provides worthwhile returns (our 28 July wether lamb Sale was positive with 368 lambs, averaged weight dressed 22.6 kg, returning \$187/hd).

We look forward to welcoming you to our Open Day on August 20 and our On-Property Sale on September 10, also interfaced with AuctionsPlus. Due to COVID we will be using online and social media channels more frequently, please contact the team for any information or to arrange a private inspection.

All the best,
George Falkiner

WHY BUY HR MERINOS?

HR ewes are **extremely fertile**, they carry a **soft, bright medium wool on a large and productive frame**. HR breed and sell consistently **premium and profitable sheep**.

Our **Merino Rams consistently deliver** for clients – through one of the toughest seasons on record, multiple clients scanned **in-lamb 130-160%**

Our genetics are proven: Our ASBVs are market-leading for **Yearling Clean Fleece Weights (19.2%)** and improving year on year for **Yearling Fat** and **Eye-Muscle Depth**.

WHY BUY HR POLL MERINOS?

HR invests in **premium Sires, semen and ewes**, and are very happy with the quality of our 2020 drop AI Poll lambs, achieving **122% at lamb-marking** for the mixed-age Poll ewes.

As part of our **sustainability and welfare commitment**, we have ceased mulesing our Poll Stud.

We are very happy with how our **ASBVs are progressing**, we are now **DNA testing our entire Poll Stud to confirm Sire and dam pedigrees to greatly improve linkages and accuracies**. Industry-leading **Post-Weaning and Yearling Weights (5.3kg)**, **Fibre Diameter (-0.8)** **Fleece Weight (25.8%)**, **FP+ (143.2)** and **MP+ (157.4)**.

2020 TOP AI SIRES

SIRE: HR 190243

A long-bodied Sire with great balance and finish. He has an incredibly soft, pure Sires muzzle. His highlight is his elite wool. 243 has a long stapled soft sharp medium wool with great lock and feel. Growing from a very loose productive skin with great nourishment. He has a tremendous 27.8% YCFW.



Sire: HR 150095 x HR130136

DAM: HR 150027

BWT	FD	SD	CV	CF
102.5	20.1	3.1	15.4	99.7
YWT	YEMD	YFAT	YFD	YCFW
4.2	-1.1	-0.9	-1.0	28.5

Sire: HRP 190612

A very correct Sire with a long body and healthy spring of rib, supporting a loose soft skin and pure white muzzle. 612 carries a gutsy lustrous 17.2 micron bold medium wool with perfect nourishment. He has above average YWT of 7.8kg and well above average YCFW of 24%.



Sire: PB 170135 x PB 150338

DAM:

BWT	FD	SD	CV	CF
104.5	17.2	2.8	16.3	99.7
YWT	YEMD	YFAT	YFD	YCFW
7.8	-1.0	-1.0	-1.5	27.4

2020 TOP ON-PROPERTY SALE RAMS

LOT 1: HR 190032

An impressive big Sire with a very deep flank and great spring of rib. He is very correct and has a strong head with a great horn setting. 32 has a very soft long-stapled, well-defined medium wool with very good nourishment. He has a high YWT of 10.1 and well above average 22.4% YCFW.



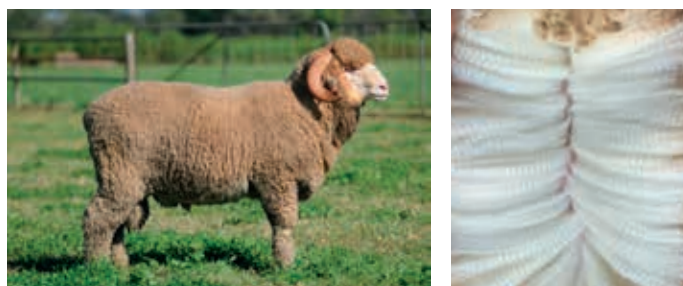
Sire: WP 170112 x W 130816

DAM:

BWT	FD	SD	CV	CF
113.5	19.7	2.7	13.7	99.6
YWT	YEMD	YFAT	YFD	YCFW
9.8	-0.3	-0.2	-0.9	21.8

LOT 2: HR 190375

A long-bodied correct Sire with an open outlook and well-covered head. He is a very well woolled ram carrying an exceedingly long stapled crimp white medium wool and has a well above average wool cut.



Sire: HR 160175 X W 130816

DAM: HR 160787 X 120715

BWT	FD	SD	CV	CF
102.5	20.3	2.8	13.8	99.8
YWT	YEMD	YFAT	YFD	YCFW
5.9	-1.1	-1.0	-0.8	23.1

2020 TOP ON-PROPERTY SALE RAMS

LOT 3: HR 190195

A very safe, masculine, correct good-looking Sire with an impressive length and depth of body. He carries a bright well-defined medium wool and has excellent ASBV figures for growth, eye-muscle and wool cut.



Sire: W 170470 X W 130844

DAM: UNKNOWN

BWT	FD	SD	CV	CF
111.5	19.7	2.7	13.7	99.6
YWT	YEMD	YFAT	YFD	YCFW
8.5	0.9	0.3	-0.4	15.4

LOT 4: HRP 190634

An outstanding Sire with a long body and plenty of scale; with a heavy-cutting long stapled, well-defined medium wool, supported by his impressive YCFW 34.7%, and YW 7.5kg.



Sire: PB 150338 x WP 003

DAM: HR 154408

BWT	FD	SD	CV	CF
115	18.9	4	21.2	98.5
YWT	YEMD	YFAT	YFD	YCFW
8.0	-0.8	-0.8	-0.9	35.5

LOT 5: HRP 190710

A very long-bodied Sire with a masculine head and terrific balance. 710 carries a 19.5 micron, long-stapled, free growing medium wool with great nourishment.



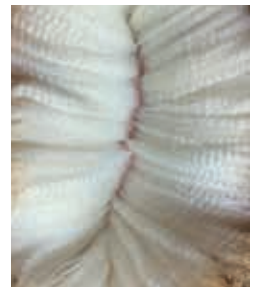
Sire: PB 170759 X PB 150338

DAM:

BWT	FD	SD	CV	CF
101	19.5	2.9	14.9	99.8
YWT	YEMD	YFAT	YFD	YCFW
7.6	-0.3	-0.4	-0.8	28.0

LOT 6: HRP 190959

A long-bodied Sire with a deep flank and soft white muzzle. 959 has the right development supporting a white high-yielding medium wool with a good skin and correct nourishment.



Sire: PB 160536 x PB 130020
x WP 003

DAM: HR 150163 X C
120102

BWT	FD	SD	CV	CF
115	18.9	2.8	14.8	99.8
YWT	YEMD	YFAT	YFD	YCFW
7.5	-0.2	-0.3	-1.3	24.7

2020 TOP ON-PROPERTY SALE RAMS

LOT 7: HR 190564

The heaviest ram in the Sale team! He has a fantastic spring of rib and incredible depth of body. 564 has an open face, soft pure muzzle and carries a soft bright medium wool. He is a real carcass sheep and has excellent growth figures to back it up.



LOT 8: HRP 190530

A very good-looking Sire with a great length of body, carrying a long stapled heavy cutting medium wool. Another Sire with well above average figures for growth, eye muscle and fleece weight.



Sire: HR 170860

DAM: HR 147399

BWT	FD	SD	CV	CF
124	18.5	3.1	16.8	99.8
YWT	YEMD	YFAT	YFD	YCFW
10.1	0.1	-0.2	-1.3	24.2

Sire: HR 170135

DAM: HR 171258

BWT	FD	SD	CV	CF
112.5	18.9	2.9	15.3	99.9
YWT	YEMD	YFAT	YFD	YCFW
9.1	0.2	-0.5	-0.6	26.9

STUD CLASSER REPORT

Our HR Sale team is significantly above average for Yearly Clean Fleece Weights. Our Polls have impressive Yearling Weights and our EMD and YFAT are improving year on year.

The 2020 draft of rams looks excellent. The shedded team are well-grown and even, carrying HR's repeatable and sought-after wool quality. In March the rams entered the ram shed 9kgs heavier than at the same time last year. This is a testament to the new drought management techniques implemented on-farm and the hard work to overcome a tremendously tough period.

We are strongly committed to our HR Poll Stud, demonstrated by our repeat purchases of quality Sires and semen and Stud ewes to improve genetic depth and quality to pass on to our clients.

We put client profitability at the forefront; our focus is our foundation of easy care, easy in lamb, easy managed, superior wool, early-maturing merinos. We want our clients to increase profits with their Merinos and capitalise on the strengthening lamb market. We are positioning our Poll Stud to lead the way.

Many clients are focusing on rebuilding their flock numbers. HR has a strong history of high lambing percentages with records dating back 40 years. This already puts our clients on top of the pack as well as any re-stocker who is lucky enough to purchase HR genetics.

STUART MURDOCH



The HR team put client profitability at the forefront of everything we do.

We do this through our focus on:

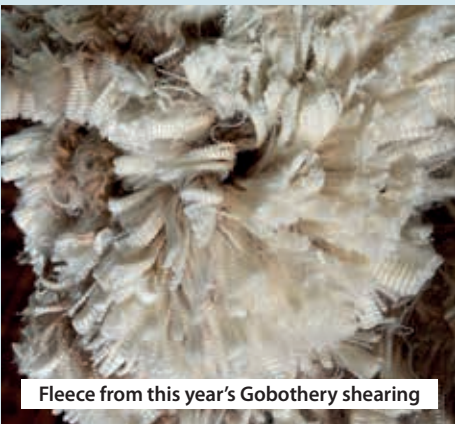
- Easy-care Merinos
- Easy-in-lamb Merinos
- Easy-managed Merinos
- Early-maturing Merinos
- Superior wool Merinos



Andy Maclean &
Brewwon Manager, Mark Jones

PIP & JACK HARRIS 'BREWON' CARINDA

- Average 6.0kg wool/head for mature ewes in May 2020
- 10,000 ewes scanned at 130% in lamb in May
- One mob of mixed age merino ewes scanning 160% in-lamb and producing 60% twins
- Feedlot gains of 250-300g per day (merino wethers)
- 2nd Place at Walgett Wether Trial 2020 (Wool Section)



Fleece from this year's Gobothery shearing

FRANCIS FAMILY 'GOBOTHERY' FORBES

"HR breed sheep with terrific longevity; there's little difference in wool quality between age groups". – FRANCIS FAMILY

- Ewes joined in December 2019 marked 103.5% ewes joined in the paddock in 2020, during very trying circumstances
- Excellent fertility rates
- 2019 drop flock ewes averaged 18.9 FD and 5.5kg for 9 months wool growth



James & Jo Morris

JAMES AND JO MORRIS 'BONANZA' LIGHTNING RIDGE

"HR rams are best suited to our environment. They're well-known for quality wool, and also being very fertile and highly productive". – JAMES MORRIS

- 50+ HR Stud Sires purchased over 100 years enabling Bonanza to breed the type of sheep that we and our clients value
- Strong business partnership with HR to 'back their product 100%'



Eleanor Falkiner, Raffaella & Charlie Blomfield

ELEANOR FALKINER AND CHARLIE BLOMFIELD 'BORIDGEREE' CANOWINDRA

"HR genetics give flexibility to adapt to the market. The added value the team provides is second-to-none." – CHARLIE BLOMFIELD

- 138% scanning rates from a tough 2019-2020 joining, with 104% marking, and 140-155% from twin SIL ewes. Total 98% marking rates with only 11% dries – incredible given the rough, dry joining and cold lambing conditions!
- Merino lambs are achieving the same or better return as trade cross-bred lambs in the feedlot given lower COVID wool pricing

OUR VALUE TO OUR CLIENTS

HR IS AS COMMITTED AS EVER TO SUPPORTING OUR CLIENTS' BOTTOM LINES.



In addition to selling our progeny throughout the year (available at our On-Property and Online 2-Tooth and Private Sales) we also offer the following:

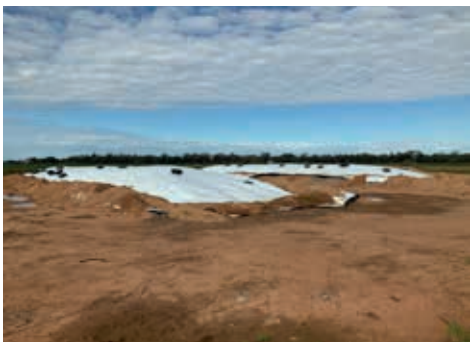
Special Stud Semen Sales: See the Merino and Poll Merino sections of our website. For top end genetic advice, contact Forbes Murdoch.

Promotion and Sales of clients surplus Haddon Rig Merino and Poll Merino Progeny through HR+Select

Classing and Stud representation: Through our trusted team led by Andy Maclean and Stuart Murdoch, Andy McLeod and Paul Kelly.

General Management Advice: Through our HR+Update and social media channels as well as our annual On-Farm Open Day (Thursday August 20) and through our Stud Master, Manager and Representatives throughout the year. Get in touch with the team!

WHAT WE'RE DOING DIFFERENTLY



WE AIM TO BE AT THE FOREFRONT OF TECHNOLOGY AND INNOVATION, IMPROVING CONSTANTLY TO DELIVER VALUE.

In 2020 we continued pioneering and adopting best-practice to get optimum results:

Early-joined ewes: We joined 1,300 45kg+ Merino & Poll Merino lambs to our best Sires to improve value realisation and help bolster flock numbers. Further information can be found on the next page.

DNA testing and tagging: We have invested to manage our premium genetics through accurate DNA testing all Poll and Special Stud Merinos to put better data behind our decision-making.

ClipEx 3-Way Auto Draft: We invested in this auto-draft to improve data collection efficiency (side-sampling, weighing), and ensure the safety of our team.

Genomics, AI and ET: We continue our strong AI and ET programs (1500 AI and 25 ET donors), constantly refining traits and driving quality and consistency.

Sustainability: We gained SustainaWOOL accreditation, have ceased mulesing our Poll Stud and are reducing our carbon footprint by installing solar power for irrigation pumps.

Drought-proofing: We will erect permanent feedlot shade, and have created above-ground silage facilities containing 1200 tonnes of cotton silage to bolster our drought-feeding program.

ON FARM UPDATES

EARLY JOINED EWE CASE STUDY UPDATE – ANDY MACLEAN



2019 drop ewe-lambs with lambs at foot

HR trialled joining our 9-month-old ewe-lambs to boost numbers and utilise the exceptional feed. 1300 of our heavier (45 kg+) Merino and Poll Merino ewe lambs were selected.

At 9 months and with strong body weights, they were joined for two cycles (35 days) to some of our best HR Sires (at 3%). At 11 months they scanned 70% in lamb with 15% of these showing multiples.

Early shearing (>5kg for 7 months growth) allowed them to increase body weight and grow healthy lambs. They have been split into ~100 head mobs and are lambing well as we print.

This program enables us to get our ewes in lamb sooner and increase our ewe base numbers following the drought. Hopefully it will also increase the lambs per ewe over their lifetime, significantly boosting our lamb numbers as we and other farms look to restock coming out of a harsh season. We are keeping a watchful eye on the ewes to manage their welfare ongoing.

Watch this space!



2019 drop ewe-lambs with twins at foot



Lucy, Elizabeth, Will & Lachlan Latham

FARMING

UPDATE – ROBERT LATHAM

Receiving ~400 mm of rain at the start of the year meant we planted into moisture, a big difference from the last few years! We started planting oats and canola for feed in April and canola, wheat, lupins, barley and chickpeas in June – a busy few months.

All winter crops are now growing well. In-crop rain events have allowed us to spread urea onto the canola and some of the wheat.

Cotton prep is coming along nicely with all fields going into cotton pulled into hills. We will start putting gas (anhydrous ammonia) into the hills in the coming weeks.

Following rain earlier in the year, we also purchased a couple of hundred preg-tested cattle. These have been key to grazing down the feed and opening up our paddocks for the sheep.



Robert Latham – HR Farming Manager

www.haddonrig.com.au

Visit our website for all updated news and to download upcoming Ram Sale Catalogues.

Like us on Facebook:
Haddon Rig Merino and Poll Stud



Follow us on Instagram:
#haddonrigstud




Follow us on Twitter:
#haddonrigstud





haddonrig.com.au

 Like us on Facebook:
Haddon Rig Merino and Poll Stud

 Follow us on Instagram:
#haddonrigstud

 Follow us on Twitter:
#haddonrigstud

OUR TEAM

TEAM NEWS

This year we celebrated 60 years with Australian sheep industry legend, Forbes Murdoch OAM. We are proud and thankful to have Forbes as our Stud Master.

In late 2019, HR finalised the purchase of 'Rosewood' a mixed farming and irrigation holding in the Lachlan Shire. This purchase will support feed and irrigation availability in difficult years.

Sal Falkiner completed her Bachelor of Fine Arts from NAS in 2019, and has exhibitions and workshops planned for 2020-2021. Check out her website www.sallyfalkinerart.com

(L-R) Callum McLean, Andy Maclean, Paula Blake, Stuart Murdoch, George Falkiner, Oscar Philip, Ben Fuller, Will Southon



PRINCIPAL

George Falkiner

M: 0418 474 262
E: george@haddon-rig.com.au

STUD MANAGER

Andy Maclean

M: 0429 662 226
E: andy@haddon-rig.com.au

STUD CLASSER

Stuart Murdoch

M: 0427 437 103
E: stuartmurdoch2@bigpond.com

FARMING MANAGER

Robert Latham

M: 0427 174 271
E: robert@haddon-rig.com.au

OFFICE MANAGER

Paula Blake

T: 02 6847 4405
E: paula@haddon-rig.com.au

STUD ADVISOR

Andy McLeod

T: 02 6884 9018
M: 0418 465 725
E: cmcleod13@bigpond.com

STUD MASTER

Forbes Murdoch

M: 0429 358 590
E: forbesm2014@gmail.com

STUD REPRESENTATIVES

Paul Kelly

M: 0427 476 367
E: paulkelly6@bigpond.com

James Koster

M: 0427 546 873
E: jameskoster@bigpond.com

Scott Thrift ELDER'S STUD STOCK

M: 0417 660 260
E: scott.thrift@elders.com.au

Brad Wilson NUTRIEN

M: 0417 467 911
E: bradley.wilson@nutrien.com.au