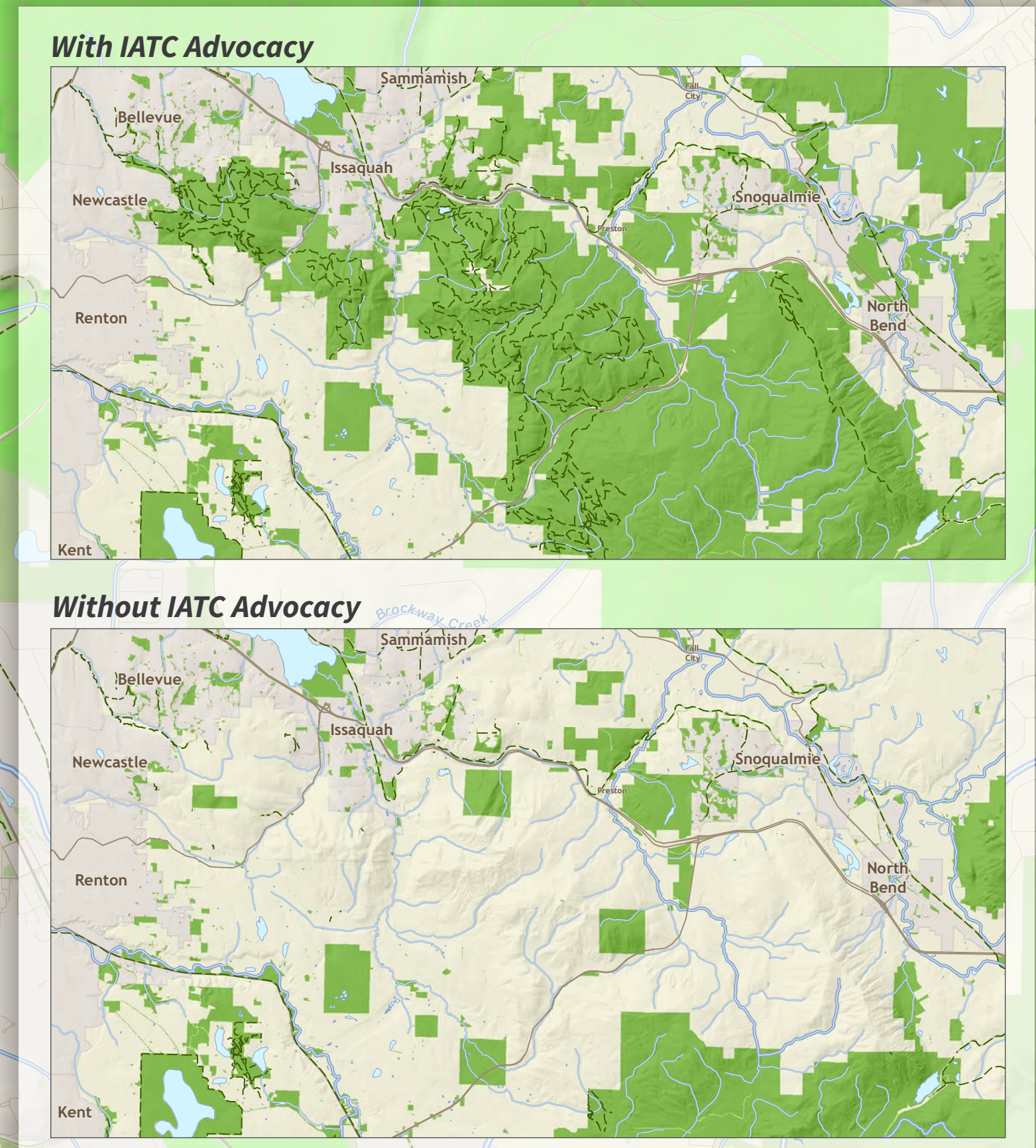
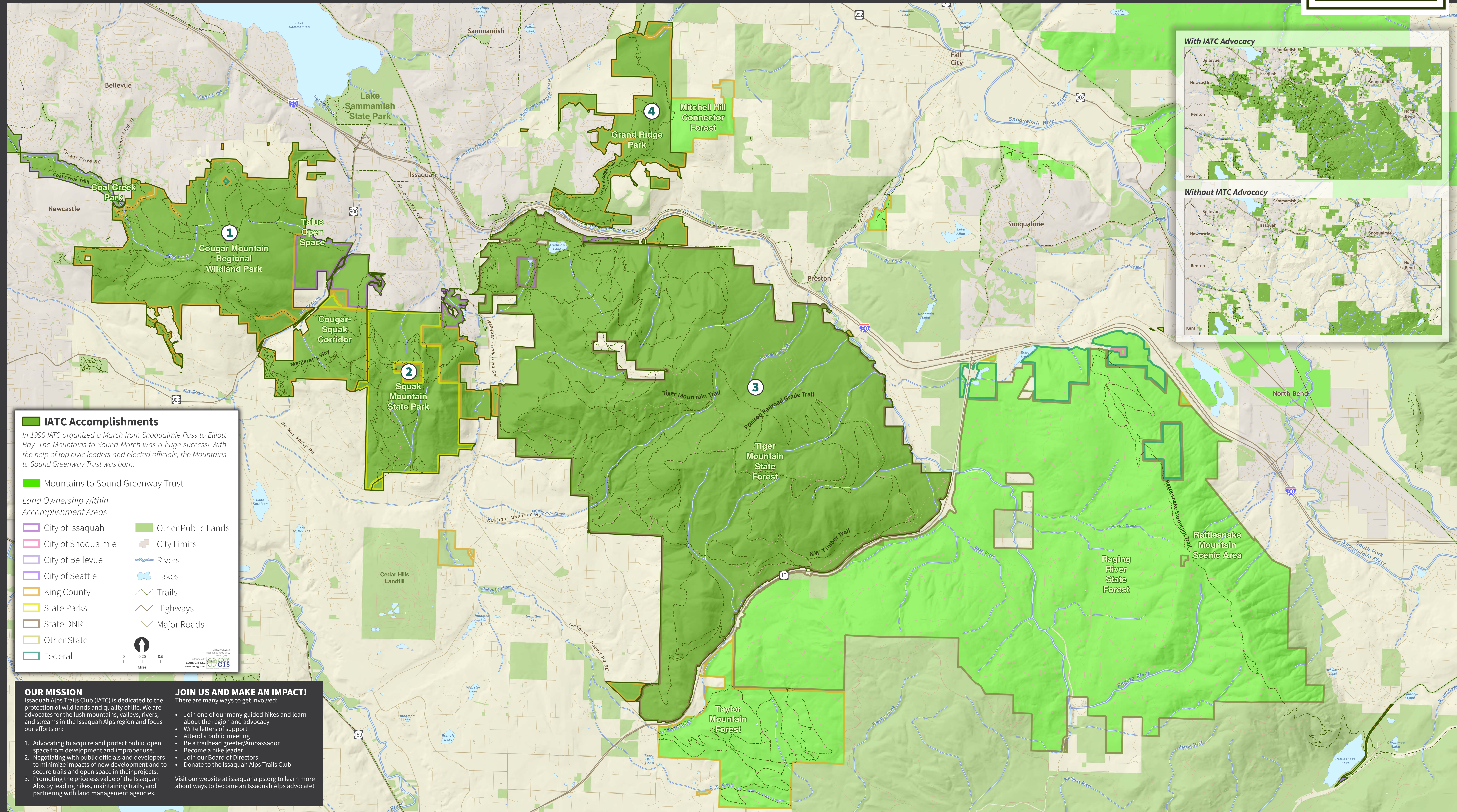


# CELEBRATING 40 YEARS OF ISSAQUAH ALPS TRAILS CLUB (IATC)

Advocates for Land Preservation through Partnerships



FORTERRA



**IATC Accomplishments**

In 1990 IATC organized a March from Snoqualmie Pass to Elliott Bay. The Mountains to Sound March was a huge success! With the help of top civic leaders and elected officials, the Mountains to Sound Greenway Trust was born.

**Mountains to Sound Greenway Trust**

**Land Ownership within Accomplishment Areas**

- City of Issaquah
- City of Snoqualmie
- City of Bellevue
- City of Seattle
- King County
- State Parks
- State DNR
- Other State
- Federal
- Other Public Lands
- City Limits
- Rivers
- Lakes
- Trails
- Highways
- Major Roads

Scale: 0, 0.25, 0.5 Miles

**OUR MISSION**

Issaquah Alps Trails Club (IATC) is dedicated to the protection of wild lands and quality of life. We are advocates for the lush mountains, valleys, rivers, and streams in the Issaquah Alps region and focus our efforts on:

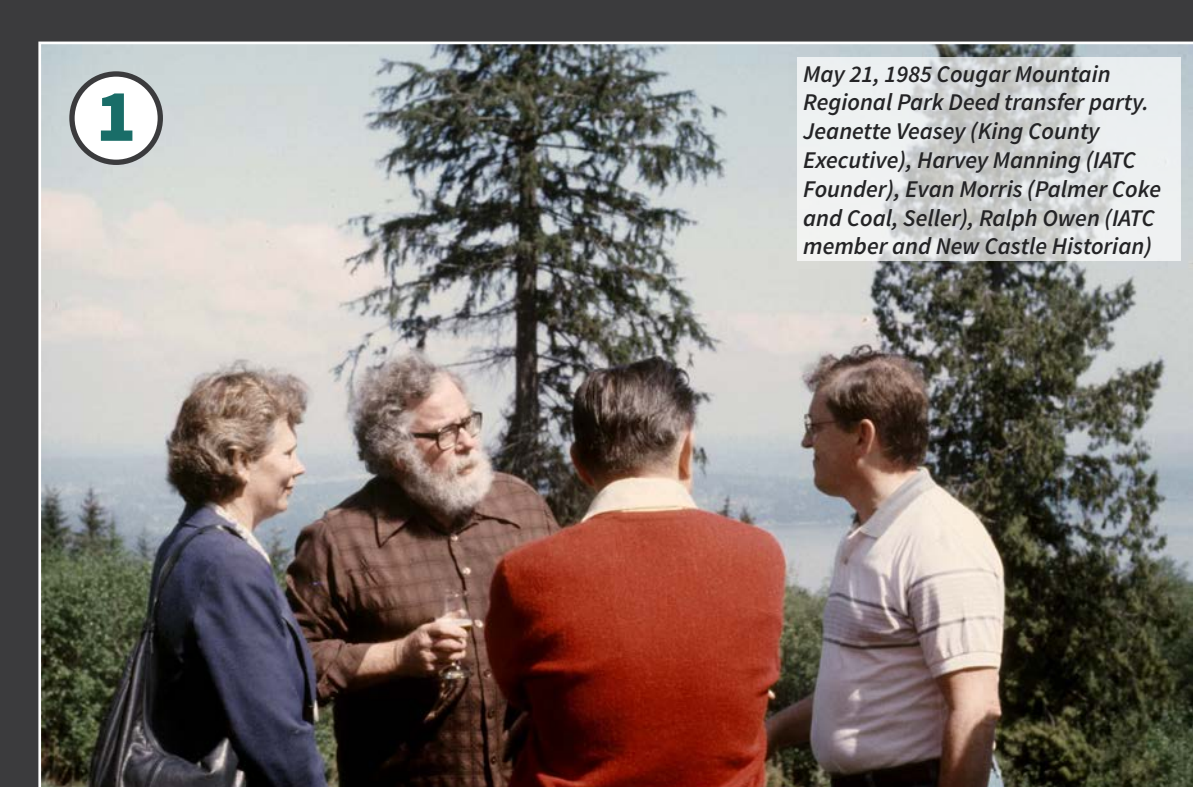
- Advocating to acquire and protect public open space from development and improper use.
- Negotiating with public officials and developers to minimize impacts of new development and to secure trails and open space in their projects.
- Promoting the priceless value of the Issaquah Alps by leading hikes, maintaining trails, and partnering with land management agencies.

**JOIN US AND MAKE AN IMPACT!**

There are many ways to get involved:

- Join one of our many guided hikes and learn about the region and advocacy
- Write letters of support
- Attend a public meeting
- Be a trailhead greeter/Ambassador
- Become a hike leader
- Join our Board of Directors
- Donate to the Issaquah Alps Trails Club

Visit our website at [issaquahalps.org](http://issaquahalps.org) to learn more about ways to become an Issaquah Alps Advocate!



**1 COUGAR MOUNTAIN**

In 1985 King County made a major purchase of land that was the first step in the creation of Cougar Mountain Regional Wildland Park. IATC worked with King County and other groups like the Newcastle Historical Society to secure the sale and transfer of land from Palmer Coke and Coal. This avoided the sale to an interested buyer from Canada who had plans to build a housing development in geologically unstable terrain where a landslide led to a death. The Park has since grown to 3,115 acres of open space and with the help of diligent activists is still growing! Now it is the home to wildlife, numerous trails, and is a key part of what makes Issaquah a beautiful place to live and play!

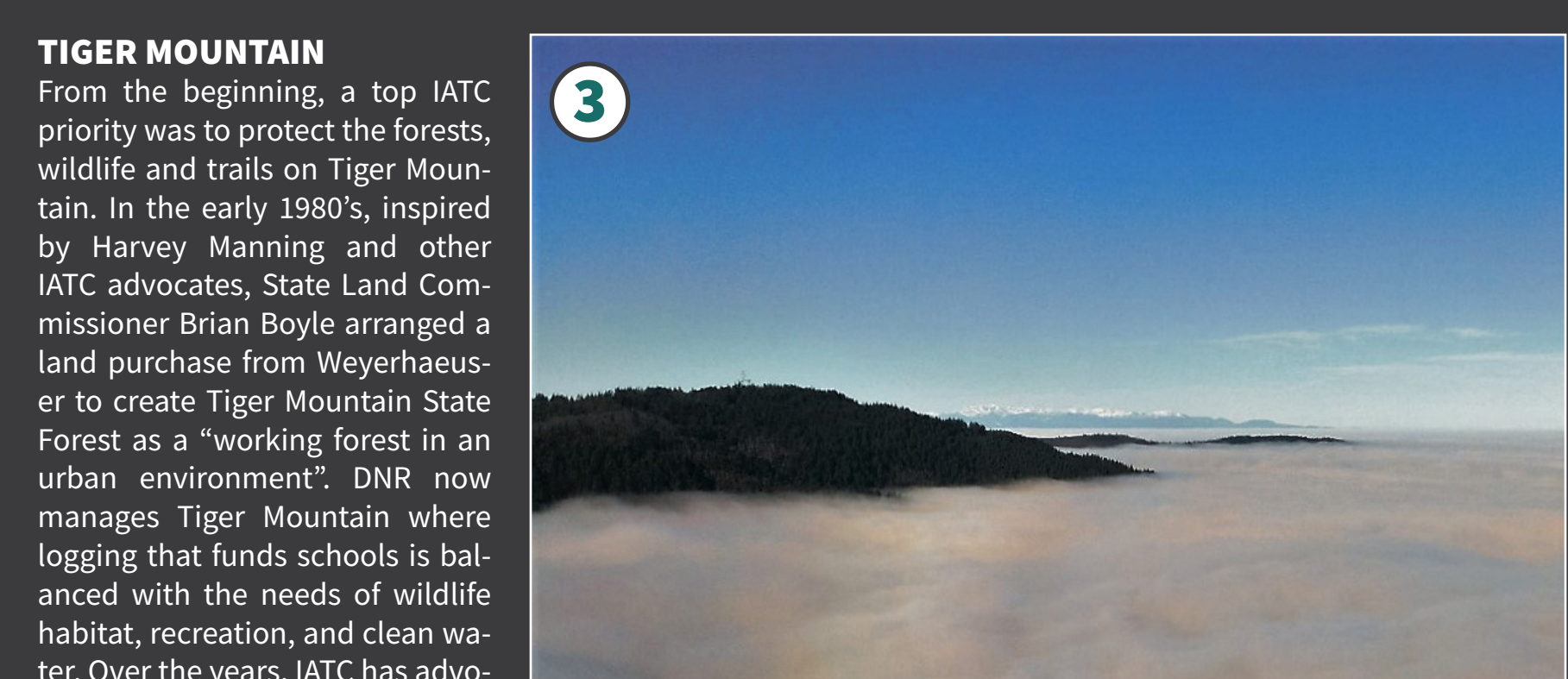
**2 SQUAK MOUNTAIN**

Originally created by a Bullitt family donation of almost 600 acres, the protected forests of Squak Mountain continues to grow. In 2014, 226 acres of private forest on the west side of Squak Mountain was about to be logged. IATC Board member David Kappler and concerned citizens formed "Save Squak Mountain" to raise awareness about the importance of protecting and preserving the land and preventing potential landslides from steep terrain logging which could impact homes and salmon bearing streams. Save Squak Mountain's advocacy led to Trust for Public Land purchasing the property and protected it from logging until King County purchased the land and formed the Cougar/Squak Corridor Park, home to Margaret's Way trail that connects to trails in Squak Mountain State Park.



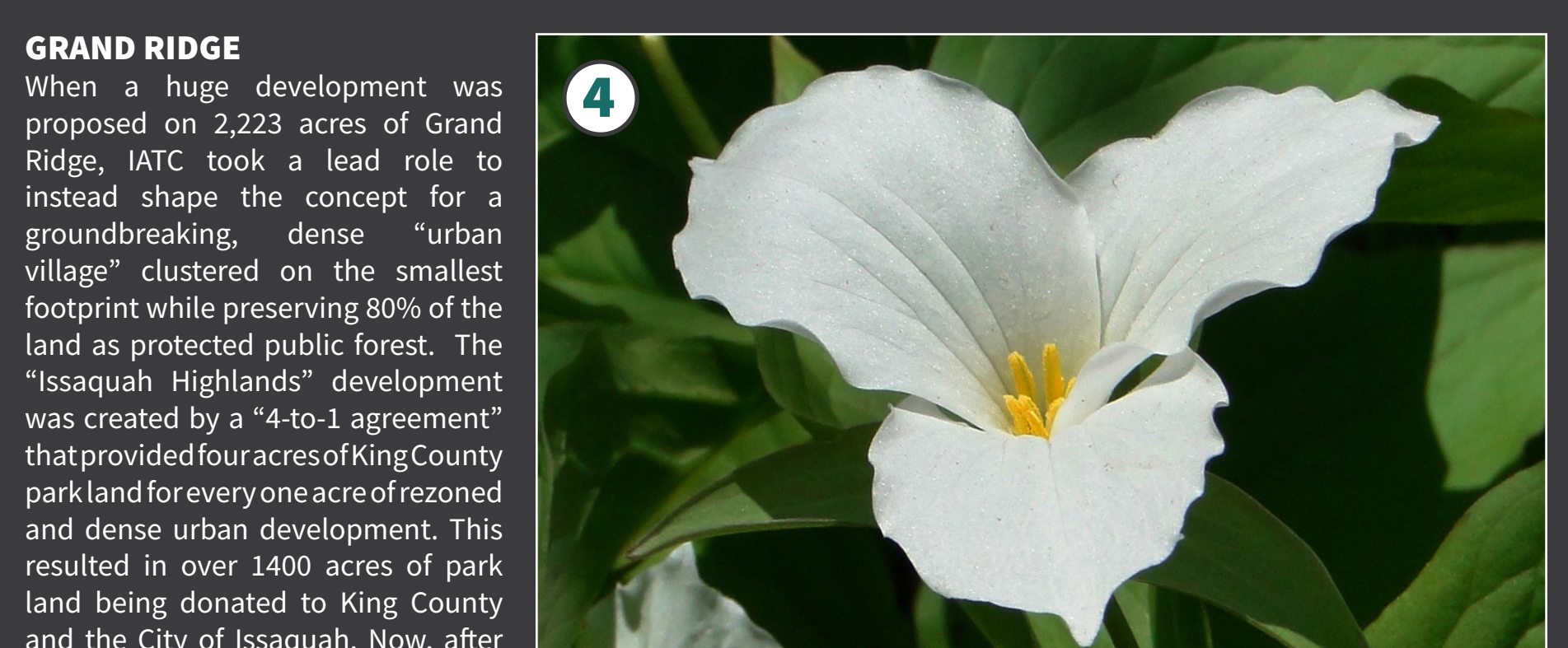
**3 TIGER MOUNTAIN**

From the beginning a top IATC priority was to protect the forests, wildlife and trails on Tiger Mountain. In the early 1980's, inspired by Harvey Manning and other IATC advocates, State Land Commissioner Brian Boyle arranged a land purchase from Weyerhaeuser to create Tiger Mountain State Forest as a "working forest in an urban environment". DNR now manages Tiger Mountain where logging that funds schools is balanced with the needs of wildlife habitat, recreation, and clean water. Over the years, IATC has advocated for the purchase of numerous private land parcels to enlarge Tiger Mountain State Forest. Enjoy the 60+ miles of trails by foot, horseback, and mountain bike!



**4 GRAND RIDGE**

When a huge development was proposed on 2,223 acres of Grand Ridge, IATC took a lead role to instead shape the concept for a groundbreaking, dense "urban village" clustered on the smallest footprint while preserving 80% of the land as protected public forest. The "Issaquah Highlands" development was created by a "4-to-1 agreement" that provided four acres of King County parkland for every one acre of rezoned and dense urban development. This resulted in over 1400 acres of parkland being donated to King County and the City of Issaquah. Now, after several subsequent acquisitions to create connections of public lands that stretch to Preston, a total of 3,000+ acres are protected on Grand Ridge and Mitchell Hill.



**4 GRAND RIDGE**

When a huge development was proposed on 2,223 acres of Grand Ridge, IATC took a lead role to instead shape the concept for a groundbreaking, dense "urban village" clustered on the smallest footprint while preserving 80% of the land as protected public forest. The "Issaquah Highlands" development was created by a "4-to-1 agreement" that provided four acres of King County parkland for every one acre of rezoned and dense urban development. This resulted in over 1400 acres of parkland being donated to King County and the City of Issaquah. Now, after several subsequent acquisitions to create connections of public lands that stretch to Preston, a total of 3,000+ acres are protected on Grand Ridge and Mitchell Hill.