



## LED LANDSCAPE LIGHTING SYSTEMS FOR RESIDENTIAL AND COMMERCIAL APPLICATIONS

Enhance your outdoor living space with  
Lite the Nite landscape lighting solutions



*Get ON with it!™*



Lite the Nite is proud to continue our tradition of offering advanced outdoor lighting solutions that best fits your outdoor illumination needs. Within these pages, please find our next generation of residential and commercial industry leading lighting solutions.

Thank you for your interest in Lite the Nite! Now lets... **Get ON with it!**

The Beauty is in the *SYSTEM*

Built To *LAST*

- AC & DC Power Sources
- Brio (Brass) Collection 15 year fixture warranty
- Aura (Aluminum) Collection 5 year fixture warranty
- LED ratings for up to 50,000 hrs & 10 year warranty

Remarkably *SIMPLE*


- Single SKU includes LED & mounting bracket or stake
- Pathlights with 12" or 18" stems, hats and oversized stakes
- Low voltage and line voltage
- Full line of accessories
- Certified turtle-friendly options 



Table of Contents

Page 2.....Intro  
 Page 3.....Power Systems  
 Page 4.....Spotlights  
 Page 5.....Pathlights  
 Page 6.....Hardscapes  
 Page 7.....Specialty  
 Page 8.....Commercial  
 Page 9.....Turtle Friendly  
 Page 10.....LED's  
 Page 11.....Accessories  
 Page 12.....Contact Info



Lite the Nite continues to stay ahead of the curve with the industries most advanced power sources for controlling any low voltage landscape lighting systems. We offer AC & DC output options to best suit your particular application.

DC Wire Run Recommendations

Wire Size	Total Wattage					
	20	40	60	80	100	135
16	215	110	70	55	40	30
14	350	175	115	85	70	50
12	550	270	185	135	110	80
10	870	440	295	220	175	125

Maximum recommended wire length based on wire size and total wattage. The wire selection table provides a maximum voltage drop of 20%. (Calculated for the Nite Driver and Lite the Nite LED fixtures.)

AC vs. DC

AC offers a simplistic and economic way to power your system.

DC is the preferred choice as LED's are made to run on DC. The AC to DC conversion is eliminated, allowing LED's to run more efficiently, thus increasing lifespan.



LTN050AC LTN1120AC

50W or 120W AC Transformer  
12V AC  
Photocell/Timer/Manual  
Composite black finish



LTN2300AC LTN2200AC

200W or 300W AC Transformer  
12V-15V AC  
Photocell/Timer/Astronomical clock/Manual  
Overload LCD warning system  
Circuit breaker protection  
Quick connect taps  
304 stainless steel housing



LTN1100AC

100W AC Transformer  
Suitable for smaller lighting projects  
Digital photo eye programming  
Manual on/off



Are you using a Home Control System?

Now you can add your outdoor lighting controls to any home control system...

\*New for 2022\* LTN2150

Home Control DC 150W Power Pack  
RF remote control system  
Expandable  
Surge Protection  
Dimming capability  
Rechargeable capacitor





## Uplights

Installed using Ground Stake (included) and aimed upward for wall wash and landscape highlighting. Uplights are the workhorse that define shape and details.

## Downlights

Surface mounted downlights (mounting bracket included) are designed for subtle wall wash creating unique accents and drama. May also be wall mounted where up lighting is needed.

### AURA COLLECTION

Solid Aluminum Construction with Textured Bronze Finish



NO LED	AU110TBZ		AD110TBZ	NO LED
5W	AU115TBZ	Dimmable MR16 LED optional 17°, 40° or 60° beam spread	AD115TBZ	5W
7W	AU117TBZ		AD117TBZ	7W



Solid Aluminum Construction with Architectural Bronze Finish



NO LED	ACU210ABZ		ACD210ABZ	NO LED
5W	ACU215ABZ	Dimmable MR16 LED optional 17°, 40° or 60° beam spread	ACD215ABZ	5W
7W	ACU217ABZ		ACD217ABZ	7W



### BRIO COLLECTION

Solid Brass Construction with Bronze Finish



NO LED	BU110BZ		BD110BZ	NO LED
5W	BU115BZ	Dimmable MR16 LED optional 17°, 40° or 60° beam spread	BD115BZ	5W
7W	BU117BZ		BD117BZ	7W



Solid Brass Construction with Bronze Finish



2.5W	BU132BZ		BD132BZ	2.5W
------	---------	--	---------	------

MR8 LED included  
175 Lumen – 3000K – 80° spread



See Page 10  
for available bulbs, wattages, color temps and beam spreads



# Pathlights

Installed using a ground stake, Lite the Nite Pathlights provide a wash of light on ground surfaces such as garden beds, walkways, steps and low-lying landscape features. Add beauty and drama while creating a safer, well-lit environment.

## AURA COLLECTION

Solid Aluminum Construction with Textured Bronze Finish



4W AP136TBZ

6" cone shade  
22" height



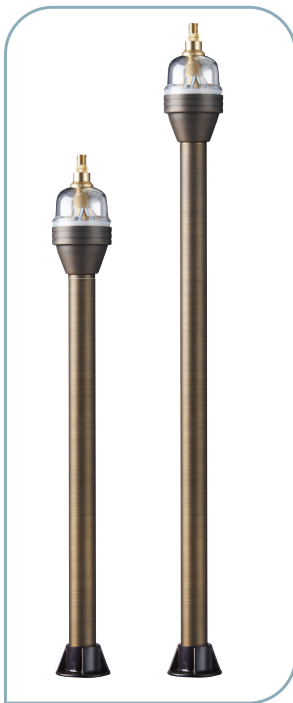
LED and ground stake included  
Integrated LED module – 169 Lumens – 2800K  
Level light output to 20% system voltage drop  
Dimmable 100% to 30%  
36" SPT-2W 18AWG copper lead wire

AP148TBZ 4W

8" tier shade  
22" height



## BRIO COLLECTION



- 6" dome shade  
BP116BZ 22" ht  
BP116BZ-2 18" ht
- 8" dome shade   
BP118BZ 22" ht  
BP118BZ-2 18" ht
- 6" cone shade  
BP126BZ 22" ht  
BP126BZ-2 18" ht
- 8" cone shade   
BP128BZ 22" ht  
BP128BZ-2 18" ht
- 8" deep shade   
BP156BZ 22" ht  
BP156BZ-2 18" ht
- 6" pyramid shade  
BP166BZ 22" ht  
BP166BZ-2 18" ht

Solid Brass Construction with Bronze Finish



LED and oversized ground stake included  
Replaceable LED module – 3.6W – 357 Lumens – 3000K  
Dimmable 100% to 30%  
36" SPT-2W 18AWG copper lead wire



847.496.5276



# Hardscapes

Lite the Nite's Starlite Collection is an ingenious lighting option for hardscape projects involving decking, stairs, railings, walls, etc. built using just about any material - from wood to brick and stone. The slim profile allows for total concealment, yet provides a spray of light to brighten hardscapes. Our surface mount step lights are dimmable and install easily with no back box required.

## STARLITE COLLECTION

### Hardscape Lights

- LED Long Life
- 20W Incandescent Replacement
- 12V Low Voltage
- 5 YEAR Fixture Warranty
- 5 YEAR LED Warranty
- ETL Intertek



Solid Brass Construction  
**3W BH1033BZ**

Replaceable LED module  
 Under Cap and Linear mounting brackets included  
 240 Lumens – 3000K – Dimmable  
 Damp location listed  
 5 ft. SPT-1W 18AWG copper lead wire



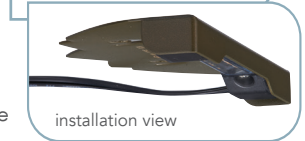
LED module removed from fixture

Stainless Steel Construction

**SH202DS 2W**

Desert Stone Color

LED and surface mount included  
 Integrated LED module – 200 Lumens  
 Available in 2700K or 3000K  
 Full light output to 35% voltage drop  
 Damp location listed  
 5 ft. SPT-1W 18AWG copper lead wire



installation view

### Linear Hardscape Light

Solid Brass Construction with Brushed Bronze Finish



**5W BLH105BZ**

Mounting screws included  
 Integrated LED – Dimmable – 3000K  
 6 ft. 18AWG copper lead wire

- LED Long Life
- 20W Incandescent Replacement
- 12V Low Voltage
- 10 YEAR LED Warranty
- ETL Intertek

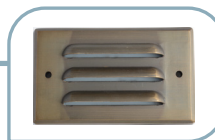


### Step Lights



**BST105BZ 5W**

3" x 5" x 7/8"  
 51 Lumens



Solid Brass Construction with Bronze Finish

- LED Long Life
- 20W Incandescent Replacement
- 12V Low Voltage
- 10 YEAR Fixture Warranty
- 10 YEAR LED Warranty
- ETL Intertek

**BST106BZ 6W**

2" x 9" x 7/8"  
 53 Lumens



Vertical surface mount – Dimmable  
 Integrated LED module – 3000K  
 No back box required  
 Outdoor location listed  
 5 ft. SPT-1W 18AWG copper lead wire

**BST109BZ 9W**

3" x 9" x 7/8"  
 90 Lumens



- 40W Incandescent Replacement

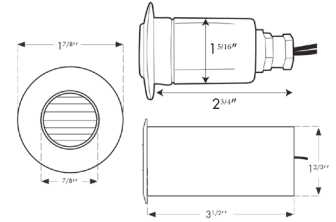
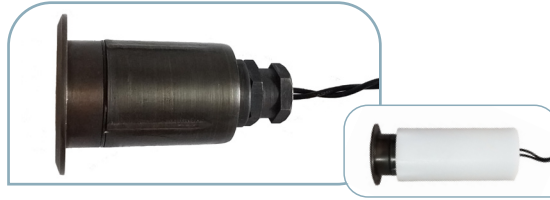


Mini Deck Lights

Solid Brass Construction with Bronze Finish

- LED**  
Long Life
- 20W**  
Incandescent Replacement
- 12V**  
Low Voltage
- 10 YEAR**  
Fixture Warranty
- 5 YEAR**  
LED Warranty

LED (#L13238) and recessed sleeve included  
MR8 – 175 Lumens – 3000K – 80° spread  
18" SPT-1W 18AWG copper lead wire



BMD132BZC  
Cross Lens

BMD132BEZ  
Eyebrow Lens

BMD132BZF  
Flat Glass Lens

BMD132BZL  
Louver Lens



Tree Rings

Aluminum Construction with Architectural Bronze Finish



ATR116ABZ

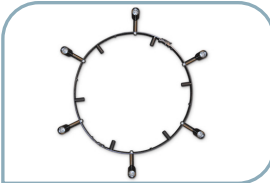
16" frame  
20.4"-32.2" tree circ.  
2 or 4 fixtures

ATR121ABZ

21" frame  
35.3"-47.1" tree circ.  
2 or 4 fixtures

ATR125ABZ

25" frame  
50.2"-62.8" tree circ.  
2 or 4 fixtures



ATR130ABZ

30" frame  
62.8"-75.3" tree circ.  
3 or 6 fixtures

ATR135ABZ

30" frame  
78.5"-91" tree circ.  
3 or 6 fixtures



AC110ABZ

MR16 LED Fixture  
Available with  
NO LED, 5W, or 7W

Under Rail Lights

Aluminum Construction with Bronze Finish

- LED**  
Long Life
- 12V**  
Low Voltage
- 5 YEAR**  
Fixture Warranty

Mounting screws included  
Integrated LED – Dimmable  
3000K  
SPT-1W 18AWG copper  
lead wire



AUR12TBZ

1.5W – 12"

AUR48TBZ

5W – 48"

AUR70TBZ

7W – 70"



Well and Submersible Lights



BW110NB

In-ground natural  
brass well light  
No LED



BSU110NB

Submersible  
Natural Brass  
No LED  
Uses MR16 Bulb

Up/Down Light



BUDS110BZ

Up/Down Light  
Solid Brass  
No LED  
Uses MR16 Bulb



## Commercial Applications

Heavy duty solid brass or aluminum construction paired with energy efficient low voltage operation and powerful LEDs make our professional grade LED lighting fixtures the perfect solution for commercial applications and public spaces. With built-in LED and Nite Driver compatibility, these lights give you more even light levels, longer cable runs with more lights, simple installation, easy positioning adjustment, and smooth dimming.

### BRIO COLLECTION

Solid Brass Construction with Bronze Finish



#### Commercial Uplights



**BUI412BZ**

12W  
Par36 lamp included  
680 lumens  
3000K  
Ground stake included



**BUR101BZ**

11W  
819 lumens  
3000K  
Ground stake included



**BUR106BZ**

6W  
316 lumens  
3000K  
Ground stake included

### AURA COLLECTION

Aluminum Construction with Black Finish



#### Commercial Floodlight



**30W**

**LTNFL30W**



Built-in LED  
4500 lumens  
3000K  
120° beam angle  
Adjustable mounting bracket



See Accessories  
for available options,  
including stakes, risers and  
surface mounts





Turtle Friendly Certified

Lite the Nite offers a full line of turtle-friendly certified landscape lighting fixtures and replacement lamps. The Florida Fish and Wildlife Conservation Commission has established guidelines for the use of lighting on and around important sea turtle nesting beaches. You can help protect these turtles and their hatchlings from lighting-induced disorientation by installing beachfront lighting designed specifically in support of these and other beach dwelling creatures.



## TURTLE FRIENDLY CERTIFIED LED LANDSCAPE LIGHTING

### Path Lights



BP118BZ-A

3.6W  
8" dome  
18" stem

BP118BZ-2A  
with 12" Stem



BP128BZ-A

3.6W  
8" cone  
18" stem

BP128BZ-2A  
with 12" Stem



BP156BZ-A

3.6W  
8" deep cone  
18" stem

BP156BZ-2A  
with 12" Stem

### Step Lights



BST105BZ-A

5W  
5" x 3"



BST108BZ-A

8W  
9" x 3"

### Down Lights

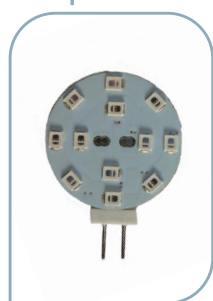


BD115BZ-A

5W  
40° spread



### Replacement Lamps



L192A

2W  
LED disk  
GU4 bi-pin



L151A

2W  
LED enclosed  
GU4 bi-pin



L161A

2W  
LED enclosed  
GU4 wedge



L115A4

LED  
5W MR16



## Replacement LEDs



### 5W-7W MR16

Choice of:  
17°/40°/60° beam spread  
2700K/3000K/4000K/5000K  
UL listed 5W or ETL listed 7W  
Dimmable



Add a splash of color for special holidays. The 5-watt MR16 LED is replaceable. Create a festive highlight with red, green and blue bulbs (non-dimmable).



### 2.5W MR8

80° beam spread  
3000K



### 12W PAR36

Choice of:  
25°/45°/60° beam spread  
3000K



### 3.6W LED Array

80° beam spread  
3000K  
Dimmable



## Replacement LED Bulbs

Model	Wattage	Color Temp	Beam Spread
<b>MR16</b>			
L21521D	5W	2700K	17°
L21524D	5W	2700K	40°
L21526D	5W	2700K	60°
L21531D	5W	3000K	17°
L21534D	5W	3000K	40°
L21536D	5W	3000K	60°
L21541D	5W	4000K	17°
L21544D	5W	4000K	40°
L21546D	5W	4000K	60°
L21551D	5W	5000K	17°
L21554D	5W	5000K	40°
L21556D	5W	5000K	60°
L21731D	7W	3000K	17°
L21734D	7W	3000K	40°
L21736D	7W	3000K	60°
<b>MR16 Color</b>			
L115B4	5W	BLUE	40°
L115G4	5W	GREEN	40°
L115R4	5W	RED	40°
<b>MR8</b>			
L13238	2.5W	3000K	80°
<b>PAR36</b>			
L14123D-25	12W	3000K	25°
L14123D-45	12W	3000K	45°
L14123D-60	12W	3000K	60°
<b>LED Array</b>			
BX1PHBZ	3.6W	3000K	80°



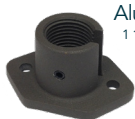
## Mounting Bases

3" Round Surface Mount Aluminum



AX1RNDBSE

Vertical Surface Mount Aluminum  
1 1/2" x 2 3/8"



AX1VRTBSE

3" Round Surface Mount Brass



BX1RNDBSE

Architectural Base Aluminum



AX1ABSE

## Risers

6" - 12" - 18"

Available in Aluminum or Brass



## Stakes



X1STK8



X1STKL8



BX1STK8



X1HDSSTK



X1HDSSTK-BCAP

### Accessories

Model	Description
<b>Mounting Bases</b>	
AX1RNDBSE	3" Round Aluminum Surface Mounting Base
AX1VRTBSE	Aluminum Vertical Surface Mounting Base
BX1RNDBSE	3" Round Brass Surface Mounting Base
AX1ABSE	Aluminum Architectural Base
<b>Risers</b>	
AX1RSR2TBZ	12" Aluminum Fixture Riser
AX1STM2TBZ	12" Aluminum Fixture Stem
AX1RSR8TBZ	18" Aluminum Fixture Riser
AX1STM8TBZ	18" Aluminum Fixture Stem
BX1RSR6BZ	6" Brass Fixture Riser
BX1RSR2BZ	12" Brass Fixture Riser
BX1STM2BZ	12" Brass Fixture Stem
BX1RSR8BZ	18" Brass Fixture Riser
BX1STM8BZ	18" Brass Fixture Stem
<b>Stakes</b>	
X1STK8	8" Plastic Fixture Stake
X1STKL8	8" Oversized Plastic Fixture Stake
BX1STK8	8" Brass Fixture Stake
X1HDSSTK	Heavy Duty PVC Stabilizer Stake
X1HDSSTK-BCAP	Optional Brass Cap
<b>Miscellaneous</b>	
X1LVW142	Low Voltage Wire 14/2 500'
X1LVW142-50	Low Voltage Wire 14/2 50'
X1WPC	Waterproof Connector 20-pc pack
X1WPC-200	Waterproof Connector 200-pc pack

## Miscellaneous



Low Voltage Wire  
14/2 AWG  
50' or 500'



Weatherproof Low  
Voltage Connector  
20 pack or 200 pack

# ABOUT US



**Get ON with it!™**

Lite the Nite is a manufacturer and supplier of high performance low voltage landscape lighting fixtures, LED's and power supplies.

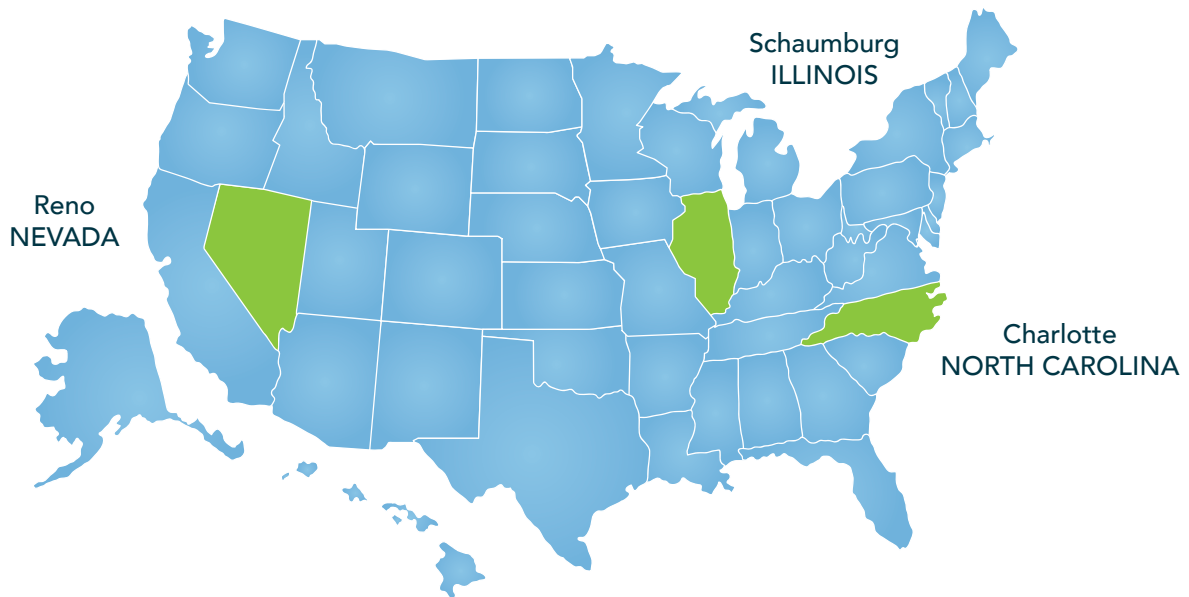
We began with the recognition that a superior quality fixture does not have to be overpriced. Our mission is to always provide superior products and service that benefit our clients, users and associates.

All of our products are designed and tested in the USA! 

Landscape lighting is a great way to augment your outdoor living space, while providing added security and safety.

Please contact us to learn more about how Lite the Nite can enhance your lifestyle with outdoor landscape lighting.

## 3 Warehouse Locations with National Distribution to Serve You



Distributed by:



Schaumburg, IL  
847.496.5276

© 2020 V021920