

JULIA ROMANO  
MEGHNA PATPATIA

# Dreamscapes

Curated by Sanjana Shah

Tao Art Gallery, 165, The View,  
Dr. A B Road, Worli, Mumbai- 400018.  
+91 (22) 2491 8585/8686 | [info@taoartgallery.com](mailto:info@taoartgallery.com)

**Tao**  
*The way to Art*

**BASU**  
FOUNDATION  
FOR THE ARTS



Consulate General and Trade Centre of the  
**Argentine Republic**  
Mumbai - Republic of India

# Dreamscapes

The world around us plays a distinct role in formulating our perceptions, ideas and inspirations. The scape is defined as any extended view or the picture/representation of one. Argentinian artist Julia Romano and Indian artist Meghna Patpatia, though divided by geography and culture, merge in their expression of this intricate relationship with the scape: a relationship that is universally experienced by all on this planet. Both take existing realistic elements and combine them with the surreal elements of mythology and ancient anthropology. The endeavor is to make these dreamscapes that question what is real and what is imagined, what is physical and what is metaphorical. Romano explores the multi-layered historical imprint on the land while Patpatia ponders on elements of an imagined future, creating together a thought-provoking narrative!



In a world where awareness of the value of land and the study of ancestral patterns is key to ensuring a sustainable future, Romano and Patpatia's works not only aesthetically appease but also contain an underlying message of awakening. Aspects of co existence and ecological and cultural synergy are beautifully highlighted through these dreamscapes, but with a subtle undertone of the very real threat of depletion in a dystopian future. Much like the land around us, the art is layered, multi-faceted and deep in composition. The combined artistic dreamscapes of this two-person show help in bringing the world a little bit closer and opening our minds a little bit wider.

**Sanjana Shah**  
*Creative Director,*  
Tao Art Gallery





*Julia Romano*

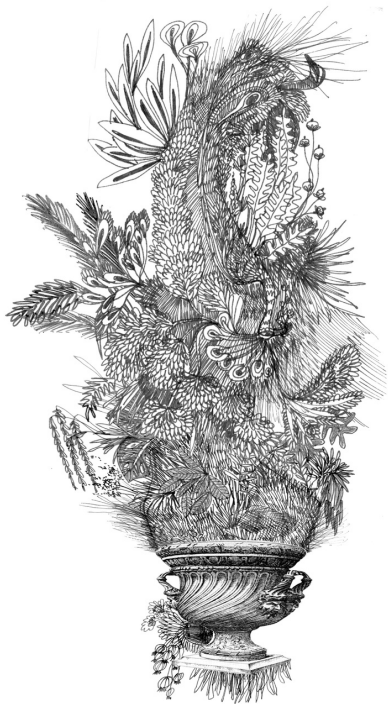


Changes of State (Drawing 8), 2021

*Inkjet print on cotton paper*

100 x 100 cm (Edition 2/5)

INR 1,90,000 + 12% GST

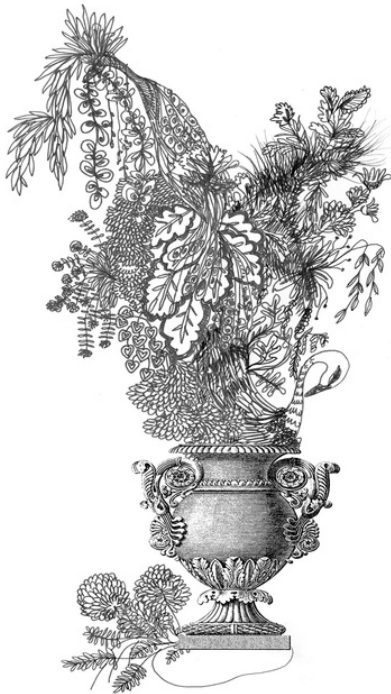


*Changes of State (Drawing 10), 2021*

*Inkjet print on cotton paper*

*100 x 100 cm (Edition 1/5)*

*INR 1,90,000 + 12% GST*



Changes of State (Drawing 20), 2021

*Inkjet print on cotton paper*

100 x 100 cm (Edition 2/5)

INR 1,90,000 + 12% GST



Changes of State (Drawing 36), 2021

*Inkjet print on cotton paper*

*100 x 100 cm (Edition 3/3)*

*INR 1,90,000 + 12% GST*





Changes of State (Drawing 40), 2021

*Inkjet print on cotton paper*

100 x 75 cm (Edition 2/5)

INR 1,75,000 + 12% GST



Changes of State (Landscape 64), 2021

*Inkjet print on cotton paper*

*100 x 100 cm (Edition 1/5)*

*INR 1,90,000 + 12% GST*



Changes of State (Landscape 65), 2021

*Inkjet print on cotton paper*

100 x 100 cm (Edition 1/5)

INR 1,90,000 + 12% GST



Changes of State (Landscape 67), 2021

*Inkjet print on cotton paper*

*100 x 100 cm (Edition 3/5)*

**INR 1,90,000 + 12% GST**



Changes of State (Landscape 68), 2021

*Inkjet print on cotton paper*

*100 x 100 cm (Edition 3/5)*

INR 1,90,000 + 12% GST



Changes of State (Landscape 73), 2021

*Inkjet print on cotton paper*

*100 x 140 cm (Edition 1/5)*

INR 2,10,000 + 12% GST



Cultural Landscape XX- Tipa, 2018

*Inkjet print on cotton paper*

*55 x 100 cm (Edition 4/7)*

INR 1,55,000 + 12% GST



Cultural Landscape I- Santa Rita, 2019

*Inkjet print on cotton paper*

70 x 100 cm (Edition 2/7)

INR 1,70,000 + 12% GST





Cultural Landscapes XXVI, 2019

*Inkjet print on cotton paper*

*100 x 100 cm (Edition 4/7)*

*INR 1,90,000 + 12% GST*



Cultural Landscapes XXX, 2020

*Inkjet print on cotton paper*

*100 x 100 cm (Edition 3/7)*

INR 1,90,000 + 12% GST



Cultural Landscapes XXXI, 2020

*Inkjet print on cotton paper*

*100 x 100 cm (Edition 5/7)*

*INR 1,90,000 + 12% GST*



Cultural Landscape XXXVII, 2019

*Inkjet print on cotton paper*

*45 x 100 cm (Edition 1/7)*

*INR 1,45,000 + 12% GST*



Cultural Landscapes - India I, 2021

*Inkjet print on cotton paper*

*100 x 100 cm (Edition 1/7)*

*INR 1,90,000 + 12% GST*



Meghna Patpatia



*Memory Moraine, 2021*

*Ink & gold leaf on paper & textile*

*48 x 34 inches*

*INR 1,60,000 + 12% GST*

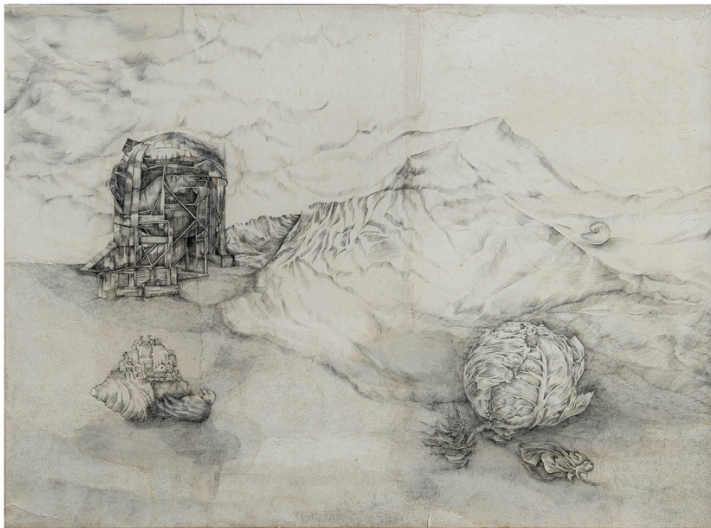


Spherical Chaos, 2020  
*Ink on paper & textile*  
15 x 15 inches  
INR 80,000 + 12% GST





Drownrooted, 2020  
*Ink on paper & textile*  
15 x 15 inches  
INR 80,000 + 12% GST



*Arid, 2018*

*Ink on paper & textile*

*36 x 48 inches*

**INR 1,20,000 + 12% GST**



*Adaptocology, 2020*  
*Ink on paper & textile*  
*20 x 30 inches*  
*INR 1,00,000 + 12% GST*



*Fecundity, 2017*

*Ink on paper & textile*

*48 x 60 inches*

*INR 1,40,000 + 12% GST*



Confined, 2020

*Ink on paper & textile*

*12 x 24 inches (diptych)*

INR 85,000 + 12% GST



Where To Now My Beloved- I, 2018

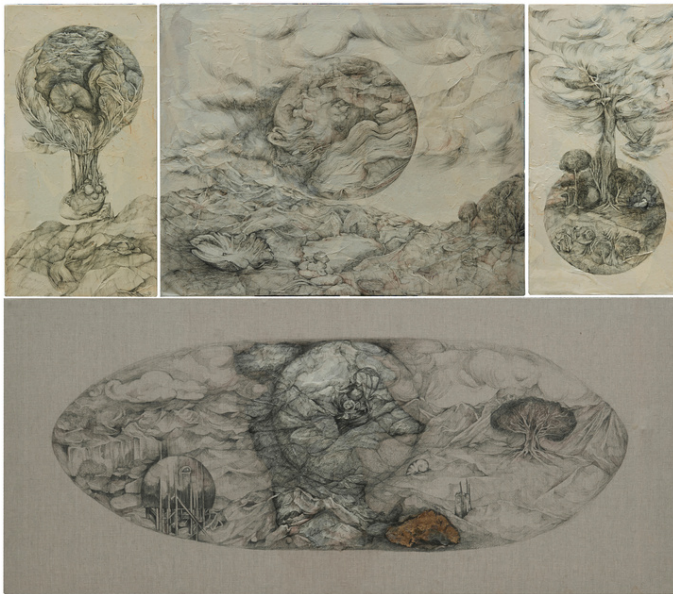
*Ink on paper & textile*

*36 x 24 inches (polyptych)*

INR 1,20,000 + 12% GST



*Mighty Wings, 2021*  
*Ink on paper & textile*  
30 x 48 inches  
INR 1,35,000 + 12% GST



*Analog Terrarium, 2021*  
*Ink & gold leaf on paper & textile*  
48 x 54 inches (polyptych)  
INR 2,00,000 + 12% GST





*Germinate, 2017*

*Ink on paper & textile*

*28 x 48 inches*

*INR 1,20,000 + 12% GST*



Analog Terrarium- Here I Was- N, 2021

Mixed media in magnified glass

*12 x 8 inches*

INR 1,00,000 + 12% GST



Analog Terrarium- Here I Was- C, 2021

Mixed media in magnified glass

*12 x 8 inches*

INR 1,00,000 + 12% GST



Analog Terrarium- Here I Was- M, 2021

Mixed media in magnified glass

*10 x 8 inches*

INR 1,00,000 + 12% GST



Analog Terrarium- Here I Was- R, 2021

Mixed media in magnified glass

*8 x 8 inches*

INR 1,00,000 + 12% GST



**Tao**

*The way to Art*

Tao Art Gallery  
165, The View,  
Dr Annie Besant Road,  
Worli, Mumbai - 400018.  
+91 (22) 2491 8585/8686

Website: [www.taoartgallery.com](http://www.taoartgallery.com)  
Inquiries: [info@taoartgallery.com](mailto:info@taoartgallery.com)