



COLLEGENEXT

A VALLEY-WIDE PARTNERSHIP TO INCREASE COLLEGE SUCCESS AND CAREER READINESS



California
Community
Colleges



CENTRAL VALLEY
HIGHER EDUCATION CONSORTIUM



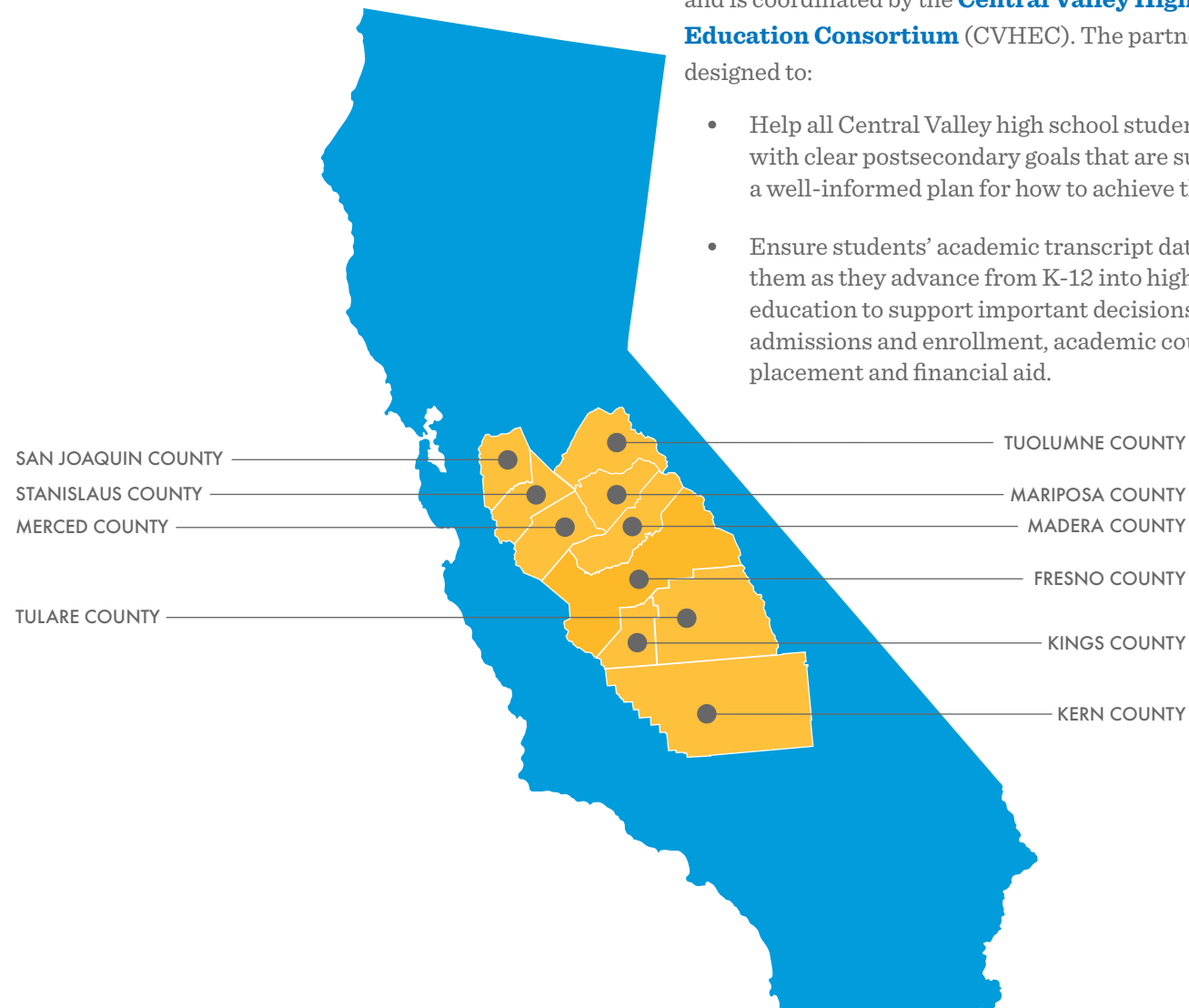
California College
Guidance Initiative

A Regional Approach for Student Success

This is our Valley. Its future depends on the students that call it home.

Education should empower students with options for their future, but currently fewer than half of the students who enter 9th grade in California complete a post-secondary degree. Among those who do progress to college, most students do not have a clear plan in place, costing them valuable time and money while reducing the likelihood of degree attainment. Additionally, difficulty moving student data from K-12 to higher education and financial aid systems often complicates decision making and prevents educators from optimizing a student's chance for success.

CENTRAL VALLEY SCHOOL DISTRICTS IMPACTED BY COLLEGENEXT



Recognizing that most Central Valley students will stay and work in the region, and that economic success is increasingly dependent on earning a post-secondary certificate or degree, local educational institutions are working together to smooth the pathway from high school to college and career. The **College Next** partnership brings together local K-12 districts with community colleges and California State University (CSU) campuses to help students develop and launch a plan for life after high school, and to support an efficient approach to data sharing across the region.

College Next was established with support from the California Community Colleges (CCC) Chancellor's Office and the California State University Office of the Chancellor, and is coordinated by the **Central Valley Higher Education Consortium** (CVHEC). The partnership is designed to:

- Help all Central Valley high school students graduate with clear postsecondary goals that are supported by a well-informed plan for how to achieve them.
- Ensure students' academic transcript data follows them as they advance from K-12 into higher education to support important decisions about admissions and enrollment, academic course placement and financial aid.



A first-generation student, like so many in California, my undergraduate experience started at Diablo Valley College before continuing to the California State University and University of California. **The new partnerships taking place in the Central Valley today represent what is possible when students' college and career goals are met with the tools to achieve them.** I celebrate school districts, colleges and universities throughout the Valley for creating these new opportunities. This is a clear example of our transformative power when we work together for students and communities.

Timothy P. White
Chancellor, California State University

The partnership taking place in the Central Valley represents a vital inter-segmental collaboration that will bolster the college-going culture in the region and pave the way for improved educational outcomes for students. Together the chancellor's offices of the California Community Colleges and the California State University are **investing in a unified approach to help students prepare for and successfully transition to college.**

Eloy Ortiz Oakley
Chancellor, California Community Colleges



CaliforniaColleges.edu

Fortifying the student pipeline and preparing Central Valley students for success.

College Next is powered by the resources provided by the **California College Guidance Initiative** (CCGI), a non-profit that manages **CaliforniaColleges.edu**, the State of California's college and career planning platform.

Unlike other data initiatives focused on aggregate level analysis, CCGI's approach is designed to smooth the path for each student as they progress from high school to college and career. With CCGI, student transcript records — as well as college and career planning data on **CaliforniaColleges.edu** — follows each student as they move through the education system. This provides educators the information they need to help lower barriers to success for individual students in real time.

Also embedded in **CaliforniaColleges.edu** is a comprehensive 6th-12th grade college and career planning curriculum that educators can use to facilitate grade level appropriate lesson plans with their students. Students can use these resources independently to identify a career, learn which program, major, degrees or certificates are necessary to work in that field, and find a college where they can pursue those interests.

By lowering obstacles many students face as they transition to life after high school and encouraging a systematic approach to college and career planning, CCGI and **CaliforniaColleges.edu** help to strengthen the education pipeline and prepare students for entry into the workforce.



CSU GPA
3.11
You are currently meeting the minimum GPA requirement of 2.0 or above. Your GPA reflects 10-12th completed "a-g" coursework submitted by your school district.

Your Eligibility for CSU
Based upon successful completion of coursework this term, for your grade level, you are missing the following number of "a-g" units: 1
You appear to not be making progress toward completing courses recommended for your grade level in the following subject areas: D
Plan to take the courses you are missing and complete those courses with a C- or better to be eligible for CSU.

Legend:
 - Green circle: Verified "a-g" course with a grade of C- or better
 - Red circle: Verified "a-g" course with a grade of D or lower
 - Grey circle: Not a verified "a-g" course
 - Yellow circle: Course listed as "a-g" by school, but not found in UC CMP database
 - Blue circle: Enrolled or planned courses
 - Green checkmark: Subject area has been satisfied

	9th Grade	10th Grade	11th Grade	12th Grade
A History/Social Science 2 years required 2 years completed		W Hst/Cul 1 S1 2014-15 Completed	B US History 1 S1 2015-16 Completed	A
B English 4 years required 4 years completed	English I-1 S1 2013-14 Completed	B English II-1 S1 2014-15 Completed	A English III-1 S1 2015-16 Completed	C Eng IV-1 ERWC S1 2016-17 Completed
C Math 4 years recommended 3 years required 3 years completed	English I-2 S2 2013-14 Completed	A English II-2 S2 2014-15 Completed	B English III-2 S2 2015-16 Completed	B Eng IV-2 ERWC S2 2016-17 Completed
D Laboratory Science 2 years required 1 years completed	Algebra I-1 S1 2013-14 Completed	B Geometry S1 2014-15 Completed	A Algebra II-1 S1 2015-16 Completed	C
E Language other than English 2 years required 2 years completed	Algebra I-2 S2 2013-14 Completed	B Geometry 2 S2 2014-15 Completed	C Algebra II-2 S2 2015-16 Completed	B
F Visual and Performing Arts 1 years required 1 years completed			Chemistry 1 S1 2014-15 Completed	B
G College Preparatory Electives 1 years required 1 years completed			Chemistry 2 S2 2014-15 Completed	A
			Spanish I-1 S1 2013-14 Completed	B
			Spanish I-2 S2 2013-14 Completed	A
			Spanish II-1 S1 2014-15 Completed	A
			Spanish II-2 S2 2014-15 Completed	B
			MultimediaDsgn1 S1 2013-14 Completed	B
			MultimediaDsgn2 S2 2013-14 Completed	A

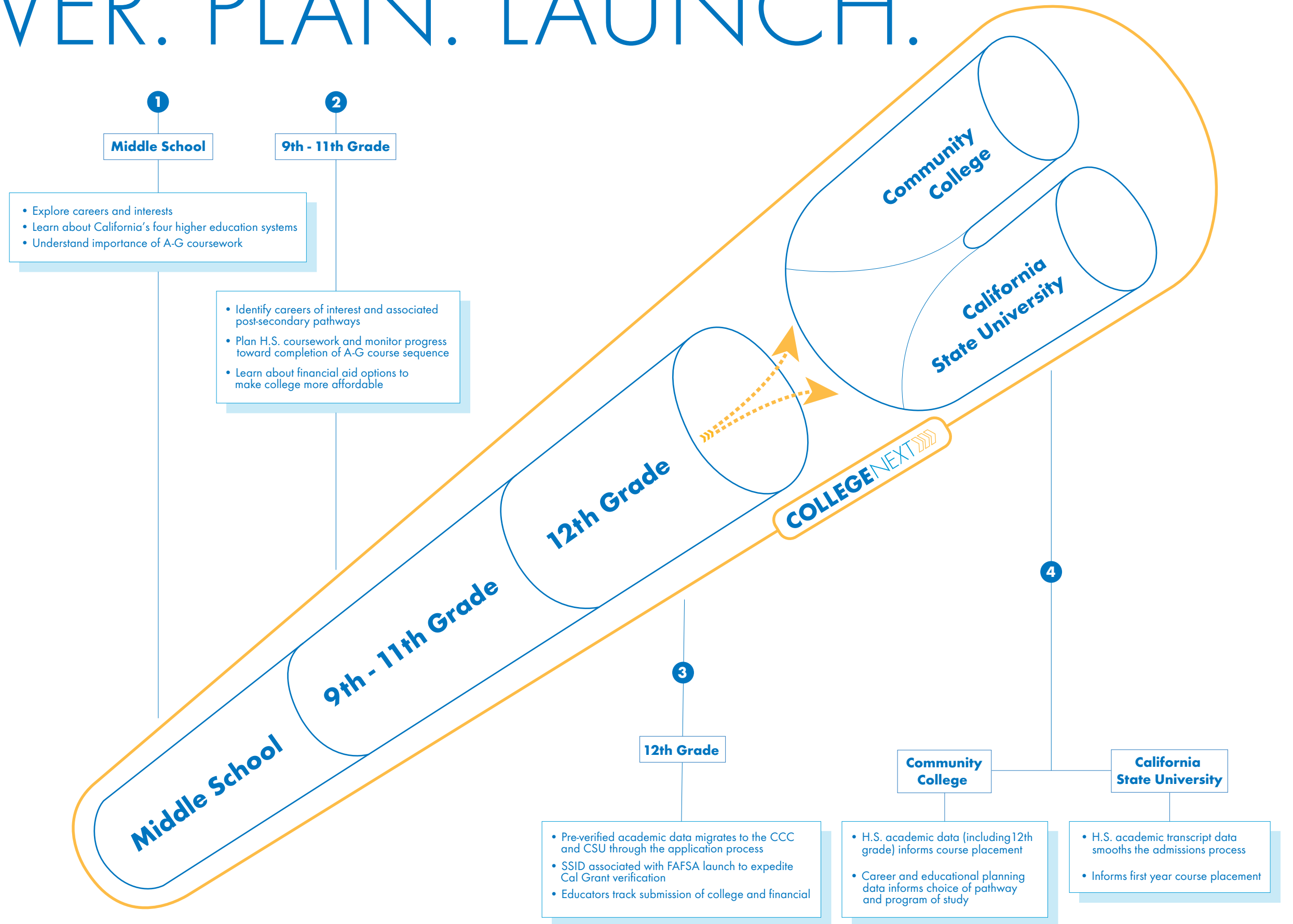
DISCOVER. PLAN. LAUNCH.

Acknowledging the value that **CaliforniaColleges.edu** provides to each segment of the state's public education system, the Chancellor's Offices of both the CCC and the CSU have teamed up to bring this resource to K-12 districts throughout the ten-county region of Central California. With **College Next**, K-12 districts in the Valley can access all the data-informed functionality available on **CaliforniaColleges.edu** free of charge for a three-year period (2019-2020, 2020-2021 and 2021-2022 school years).

By leveraging the resources of **CaliforniaColleges.edu**, students will experience easier transitions as they move from high school into college and career.

CRITICAL RESOURCES AVAILABLE FOR PARENTS, EDUCATORS, ADMINISTRATORS AND ADMISSIONS STAFF

- Parents can track progress on college and career planning activities and tools to increase A-G completion.
- K-12 educators and college outreach staff can track students individually or in the aggregate to inform guidance and necessary interventions.





The California State University is working to strengthen student success, increase graduation rates and eliminate achievement and equity gaps for all students. As part of our efforts, we are committed to the adoption of the **California College Guidance Initiative** throughout the Central Valley. This regional partnership provides tomorrow's college students with access to guidance and support as they plan, prepare and pay for college. As a result, students are better supported as they move through California's educational system and have **the necessary foundation to be successful** and earn a college degree.

Loren J. Blanchard

Executive Vice Chancellor for
Academic and Student Affairs,
California State University

COLLEGENEXT

And Beyond...

By leveraging the resources of [CaliforniaColleges.edu](https://www.californiacolleges.edu) throughout the region, Central Valley students will experience easier transitions as they move from high school into college and career. The benefits are particularly meaningful to high-risk populations traditionally less likely to attain a college certificate or degree. **College Next** gives Valley educators the tools and resources they need to facilitate meaningful conversations about the future that can change students' lives.

By working together as a region, the Valley is taking an innovative approach to removing barriers to success and supporting the students of the Central Valley in setting and achieving their goals for life.



“Our campuses are committed to using high school transcript data to ensure course placements that maximize each student’s opportunity to succeed. As we move towards defining clearer pathways for students to achieve their post-secondary goals, the first step is helping students to understand their academic and career options. The partnership taking place in the Central Valley is perfectly aligned with these commitments. Students throughout the region will use [CaliforniaColleges.edu](https://www.californiacolleges.edu) and its embedded curriculum to engage in **intentional college and career planning starting in the 6th grade**. This allows the most complete and timely transcript data to follow student and support the placement process.



Laura Hope

**Executive Vice Chancellor for Educational Services,
California Community Colleges**



COLLEGENEXT 
A VALLEY-WIDE PARTNERSHIP TO INCREASE
COLLEGE SUCCESS AND CAREER READINESS