



Federal Subsistence Board News Release



U.S. Fish and Wildlife Service
Bureau of Land Management
National Park Service
Bureau of Indian Affairs

Forest Service

For Immediate Release:
May 24, 2024

Contact: Spencer Rearden
(907) 543-3151
Spencer_rearden@fws.gov:

Kuskokwim River Mainstem Fishing Opportunities

Pursuant to authority delegated by the Federal Subsistence Board, the Yukon Delta National Wildlife Refuge (YDNWR) Manager, as In-Season Manager, hereby announces five gillnet fishing opportunities for Federally qualified subsistence users within the Federal waters of the YDNWR in the Kuskokwim River mainstem:

Set gillnet:

- **June 3, 2024 07:00 a.m. to 11:00 p.m.**
- **June 6, 2024 07:00 a.m. to 11:00 p.m.**
- **June 10, 2024 07:00 a.m. to 11:00 p.m.**

During these three opportunities, gillnets are restricted to **set gillnets** with 6-inch or less mesh, 60 feet or less in length, and may not exceed 45 meshes in depth. Additionally, set gillnets must be attached to the bank, oriented perpendicular to the river and may not be operated more than 100 feet from the ordinary high-water mark.

Gillnet (drift and/or set):

- **June 12, 2024 07:00 a.m. to 07:00 p.m.**
- **June 16, 2024 07:00 a.m. to 07:00 p.m.**

During these two opportunities, gillnets are restricted to 6-inch or less mesh and may not exceed 45 meshes in depth and 50 fathoms (300-feet) in aggregate (total set and drift gillnet) length below the Johnson River and 25 fathoms (150 feet) in aggregate (total set and drift gillnet) length above the Johnson River.

The salmon bearing tributaries and areas listed in FSA-YD-24-01 will remain closed to gillnets and the harvest of Chinook, Chum, and Coho Salmon during these gillnet opportunities. These tributaries and areas closed are:

- *The Eek River.*
- *The Kwethluk River drainage beginning at its confluence with Kuskokuak Slough.*
- *The Kasigluk and Kisarialik River drainages including Old Kuskokuak Slough to ADF&G regulatory markers at the confluence of Old Kuskokuak Slough and Kuskokuak Slough.*
- *The Tuluksak River drainage including its confluence with the Kuskokwim River and*



Federal Subsistence Board News Release



U.S. Fish and Wildlife Service
Bureau of Land Management
National Park Service
Bureau of Indian Affairs

Forest Service

downstream approximately 1-mile to ADF&G regulatory markers.

- *The Aniak River drainage to ADF&G regulatory markers at its confluence with the Kuskokwim River.*
- *The Aniak box defined as: The waters of the Kuskokwim River main stem from the Yukon Delta NWR boundary at Aniak downstream to a line formed from the northwest corner of the runway (latitude 61° 35' 16" N, longitude 159° 33' 28" W), due north to a point on the southeast corner of the sandbar (latitude 61° 35' 37" N, longitude 159° 33' 16" W).*

Attached with this news release are two maps of the gillnet fishing and closure areas.

Fishing from tributaries not listed above is restricted to fishing 100 yards upriver from the mouth of the river (confluence with the main stem Kuskokwim River).

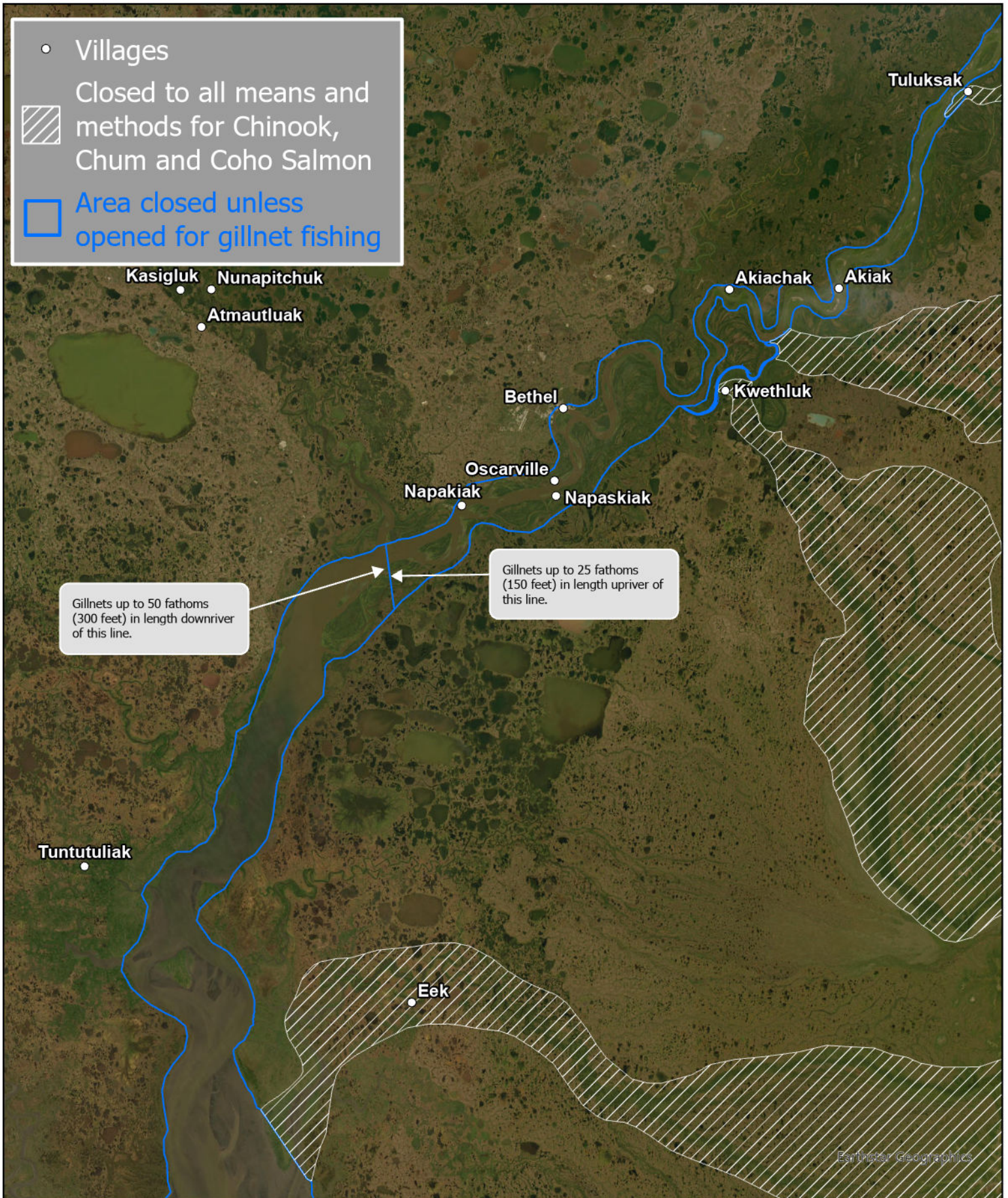
Federally qualified subsistence users may retain all salmon during these opportunities. After each gillnet opportunity expires, Kuskokwim waters revert to closed under FSA-YD-24-01.

Additional harvest opportunities for federally qualified subsistence users may be announced by subsequent news releases.

Information about the Federal Subsistence Management Program may be found on the web at www.doi.gov/subsistence or by visiting www.facebook.com/subsistencealaska.

Missing out on the latest Federal subsistence issues? If you'd like to receive emails and notifications on the Federal Subsistence Management Program you may subscribe for regular updates by emailing fws-fsb-subsistence-request@lists.fws.gov.

Lower River Gillnet Fishing and Closure Area



- Villages
- ▨ Closed to all means and methods for Chinook, Chum and Coho Salmon
- Area closed unless opened for gillnet fishing

Kasigluk Nunapitchuk
Atmautluak

Akiachak Akiak

Tuluksak

Bethel

Kwethluk

Oscarville Napaskiak
Napakiak

Gillnets up to 50 fathoms (300 feet) in length downriver of this line.

Gillnets up to 25 fathoms (150 feet) in length upriver of this line.

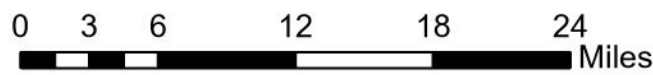
Tuntutuliak

Eek

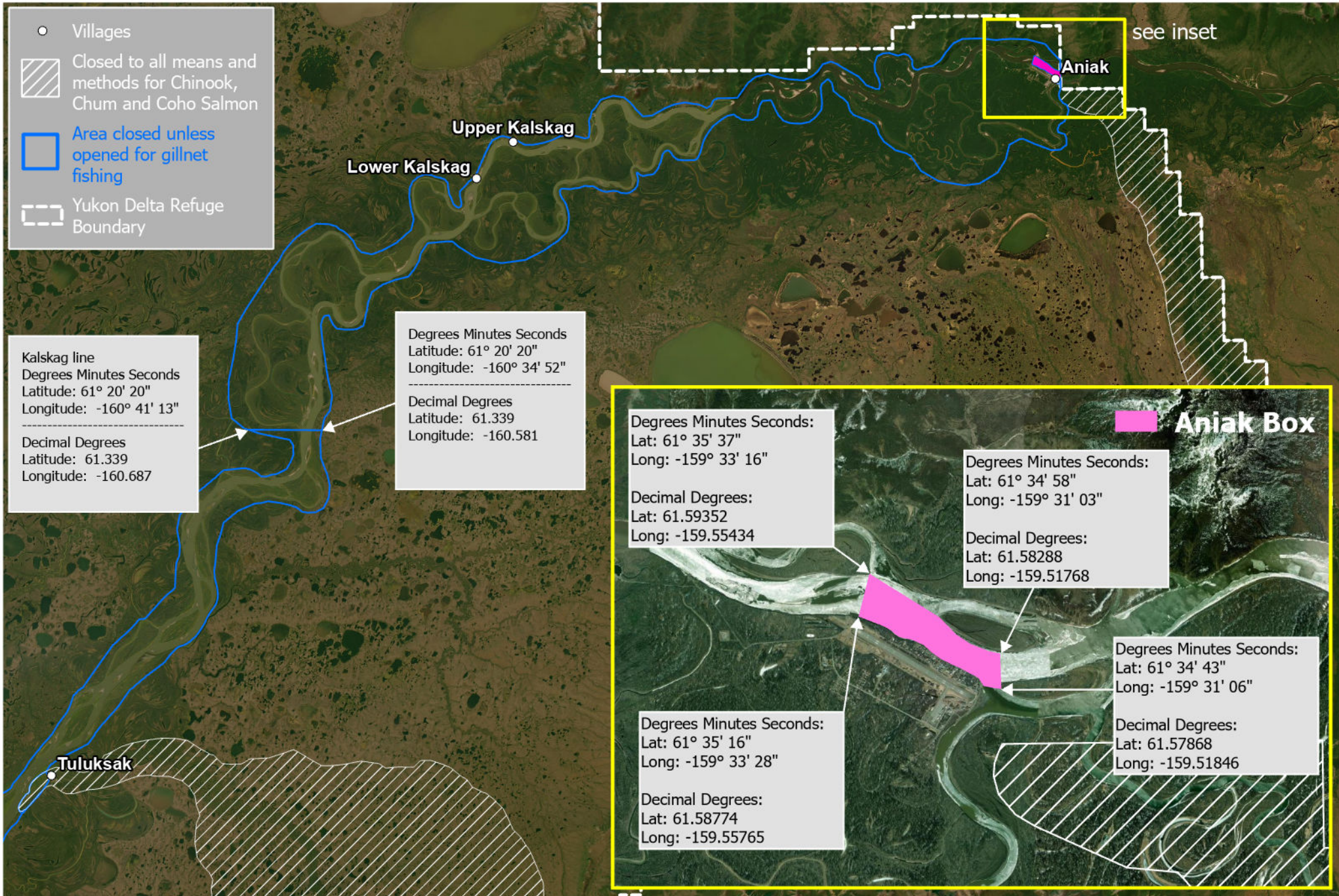
Earthstar Geographics



While the U.S. Fish & Wildlife Service makes every effort to represent the data shown on these maps as completely and accurately as possible, the USFWS gives no warranty, expressed or implied, as to the accuracy, reliability, or completeness of these data. In addition, the USFWS shall not be held liable for improper or incorrect use of the data described and/or contained herein. Graphical representations provided by the use of this data do not represent any legal description of the data herein and are provided only as a general representation of the data. Descriptions presented in special actions supersede any depictions provided in this map.



Middle River Gillnet Fishing and Closure Area



While the U.S. Fish & Wildlife Service makes every effort to represent the data shown on these maps as completely and accurately as possible, the USFWS gives no warranty, expressed or implied, as to the accuracy, reliability, or completeness of these data. In addition, the USFWS shall not be held liable for improper or incorrect use of the data described and/or contained herein. Graphical representations provided by the use of this data do not represent any legal description of the data herein and are provided only as a general representation of the data. Descriptions presented in special actions supersede any depictions provided in this map.

