



Murrumbidgee PHN Strategic Plan 2019–2022

*Well People, Resilient Communities
across the Murrumbidgee*





CONTENTS

| | |
|--------------------------|---|
| Introduction | 2 |
| Our PHN | 4 |
| Our Values | 6 |
| Our Strategic Plan | 8 |

INTRODUCTION

We are pleased to release the Murrumbidgee Primary Health Network's Strategic Plan 2019 – 2022, which identifies our strategic goals to support our vision of well people, resilient communities. It builds on our current work and has a focus on increasing the maturity of current practices. The plan has a strong focus on engagement and partnerships both with the health sector and beyond, which will continue to support our work into the future.

We know people living in rural and remote areas experience poorer health outcomes and there is an increasing burden of disease, in particular for vulnerable populations. We want to work to improve both our understanding of health needs and the factors impacting people's health and wellbeing. We believe it is critical to empower communities to contribute to the needs assessment process, as well as the design of services and health initiatives.

Central to achieving our vision of 'Well People, Resilient Communities' is to ensure integrated or coordinated services are available regardless of the rural community you live. Working collaboratively to integrate health services at the local level to create a better experience for patients as they navigate the health system is key. Working in partnership with key stakeholders including Murrumbidgee Local Health District, our local advisory committees and councils, other service providers and the community is also critical to delivering on our Strategic Plan.

Specifically MPH N has three roles to play in the primary health care setting. First, to support the work of the primary healthcare sector and have a particular focus on developing and supporting a local sustainable health care workforce. Second, to ensure efficient and effective delivery of high quality patient-centred care and improve health outcomes, particularly for those at-risk or vulnerable populations. Third, to continually analyse the health needs of our region, so that we can commission health services appropriate to the health need in the community.

We are very proud of what we have been able to achieve as an organisation to date with ground-breaking community initiatives, collaboration and our continuance to strive to meet the needs of our communities and focus on integration and coordination of services. We have taken the approach of recognising what we are doing well, how we can build on this, while concurrently looking to improve cost effectiveness and ensuring better health outcomes are being achieved.

Ultimately, MPH N is striving to deliver improved patient and population outcomes and experience and having a critical role in coordinating an integrated approach to service delivery will help reduce duplication, improve coordination and increase cost effectiveness. We know better coordination of patient care leads to better patient outcomes and greater efficiencies, and this integrated approach to service models, across the continuum of care (preventative, community, primary, acute, disability and aged care) is imperative into the future.



Melissa Neal
CEO

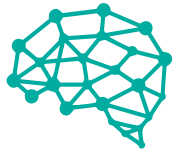


Jodi Culbert
Board Chair





NATIONAL PHN PRIORITIES



MENTAL HEALTH



ABORIGINAL AND
TORRES STRAIT
ISLANDER HEALTH



POPULATION
HEALTH



HEALTH
WORKFORCE



DIGITAL HEALTH



AGED CARE



ALCOHOL AND
OTHER DRUGS

OUR PHN DEMOGRAPHICS

POPULATION
242,962



TOWNS
514



TOTAL BIRTHS
2,411 2.4%



LAND AREA
136,898 KM²
POPULATION DENSITY
0.1-16.3 PERSONS/KM²

AREA PROFILE



31 PUBLIC
HOSPITALS

3 ABORIGINAL
MEDICAL SERVICES



87 GENERAL
PRACTICES

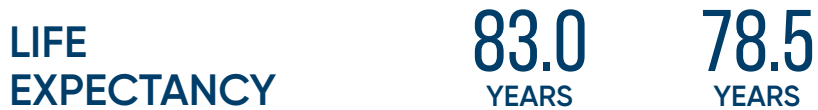
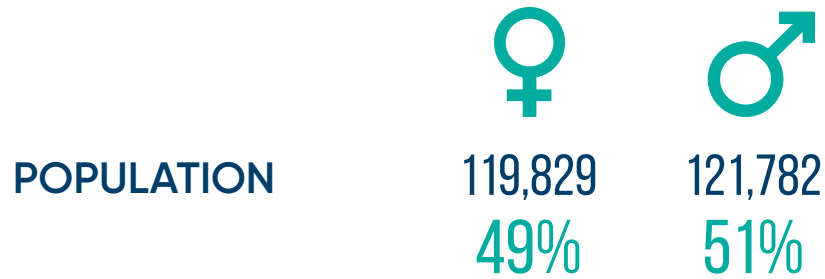
247 GENERAL
PRACTITIONERS



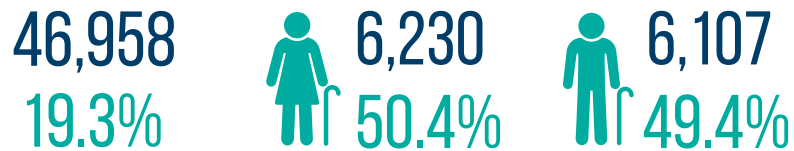
147 PRACTICE
NURSES



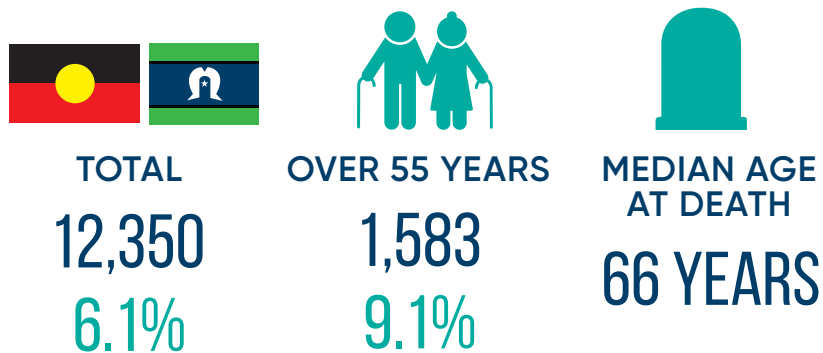
AGE, GENDER & LIFE EXPECTANCY



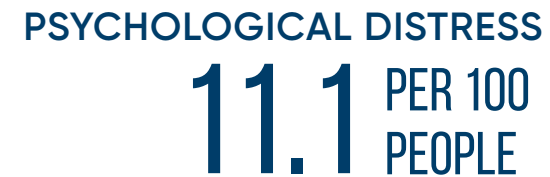
OVER 65 YEARS OF AGE



ABORIGINAL & TORRES STRAIT ISLANDER



HEALTH & LIFESTYLE



WORK TOGETHER

 HONEST

Value everyone

AIM TO
inspire

LEARN
FROM OTHERS

OUR VALUES

WORK TOGETHER

- We are inclusive and work together to achieve the best outcomes for our community
- We work in partnership with health service providers, consumers, and communities to improve the health of all people in the Murrumbidgee
- We value teamwork and share knowledge and information to help us to achieve MPHNS vision

BE HONEST

- We conduct ourselves with complete and open transparency
- We are open and honest in our communication with each other, our partners and our clients
- We are accountable for our actions and decisions and we welcome feedback to help us to continuously improve

VALUE EVERYONE

- We treat each other, our partners, and the people of the Murrumbidgee communities with kindness and humility
- We value each member of our team equally for their skills, experience and contribution to MPHNS and our communities

LEARN FROM OTHERS

- We listen to each other and our community
- We regularly engage our partners and community members to better understand their health needs
- We invest in quality healthcare services that make a real difference to the people of the Murrumbidgee
- We value feedback and the involvement of our partners and the community on decisions that will impact them

AIM TO INSPIRE

- We are passionate about our work
- We strive to provide the best practice in primary care
- We have a culture of continuous improvement
- We are committed to finding new solutions to improve the health and wellbeing of our community now and into the future

OUR STRATEGIC PLAN

Vision:

*Well People, Resilient Communities
across the Murrumbidgee*



ENABLERS

Our People

Systems and
Technology

Governance and
Leadership

Financial
Performance



GOAL 1: STRENGTHEN OUR UNDERSTANDING OF HEALTH NEEDS AND INEQUITY

STRATEGIES:

- Improve our understanding of the health of people in our communities and factors that impact their health
- Facilitate data sharing to improve understanding of health needs
- Empower communities to participate in health needs assessment and increase awareness of community health needs



GOAL 2: ENHANCE ENGAGEMENT WITH CONSUMERS, PARTNERS AND STAKEHOLDERS

STRATEGIES:

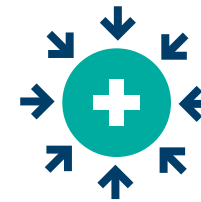
- Explore and identify opportunities to facilitate strong engagement with consumers, partners and stakeholders
- Increase regular communication to consumers, partners and stakeholders
- Continually provide opportunities for consumers to be involved and participate in decision making



GOAL 3: OPTIMISE COMMISSIONING PRACTICES

STRATEGIES:

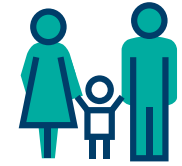
- Partner with existing and future funders to co fund initiatives and improve outcomes
- Identify new investment opportunities to support innovation and emerging possibilities
- Increase the capacity of current and future commissioned providers to respond to need
- Adopt a robust approach to assess and promote cost effectiveness of initiatives



GOAL 4: INCREASE HEALTH SYSTEM AND SERVICE INTEGRATION

STRATEGIES:

- Identify and trial new models of care to enhance service integration
- Collaborate to develop locally informed solutions to promote integration across the primary and acute health settings
- Develop local pathways to support clinical decision making and referral pathways



GOAL 5: ENHANCE CAPACITY AND CAPABILITY OF PRIMARY HEALTH CARE

STRATEGIES:

- Support initiatives in General Practice focussed on quality
- Increase use of digital health technologies to support patient care
- Partner to develop and support a sustainable local health workforce


phn

MURRUMBIDGEE

An Australian Government Initiative

 1/185 Morgan Street
WAGGA WAGGA NSW 2650

 PO Box 5663
WAGGA WAGGA NSW 2650

 t 02 6923 3100
f 02 6931 7822

 www.mphn.org.au