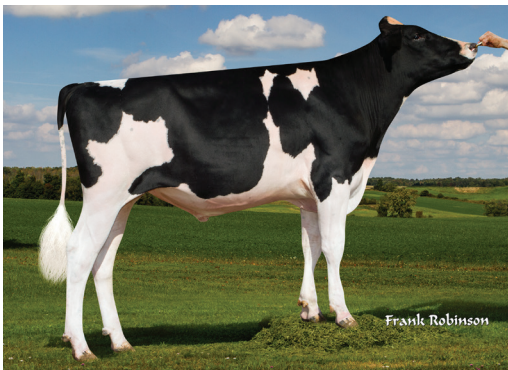




Pine-Tree Donald-ET



Dam of Donald, Endco Yoder L7933 9839-ET



[www.globalagalliance.com](http://www.globalagalliance.com)

For more information email:  
[info@globalagalliance.com](mailto:info@globalagalliance.com)

**PEDIGREE**

**Sire:** Endco Apprentice-ET  
**Dam:** Endco Yoder L7933 9839-ET  
**MGS:** Woodcrest Mogul Yoder-ET  
**MGD:** T-Spruce Lgold 7933-ET  
 02-05 2x 248d 20320m 4.4 904f 3.4 687p  
**MGGS:** Generations Liquid Gold VG-87  
**MGGD:** Bosside Epic Yinga VG-85  
 02-01 3x 365d 34150m 3.7 1271f 3.3 1119p

**CDCB GENOMIC - SIRE EVALUATIONS (04/2018)**

Milk	1723	76%R	0 Dtrs 0 Herds	100% US
Fat	82	0.06%		
Protein	67	0.05%	Net Merit \$	820
SCS	2.93	73%R	Fluid Merit \$	759
PL	5.3	71%R	Cheese Merit \$	848
DPR	0.2	71%R	Grazing Merit \$	755
HCR	2.2		Feed Efficiency	205
CCR	2.8		SCR	0

**CDCB CALVING TRAIT EVALUATIONS (04/2018)**

Sire Calving Ease	6.90%	61%R	0 Obs
Daughter Calving Ease	4.20%	55%R	0 Obs
Sire Stillbirth	7.20%	58%R	0 Obs
Daughter Stillbirth	4.20%	52%R	0 Obs

**CDCB GENOMIC - SIRE EVALUATIONS (04/2018) TPI +2666**

	PTAT +2.12 74%R	UDC +1.78 FLC 1.20 0 Dtrs 0 Herds	
Stature	○○○○○○○○○○●○○○○○○○○	1.34	Tall
Strength	○○○○○○○○○○●○○○○○○○○	0.51	Strong
Body Depth	○○○○○○○○○○●○○○○○○○○	0.63	Deep
Dairy Form	○○○○○○○○○○●○○○○○○○○	2.08	Open Rib
Rump Angle	○○○○○○○○○○●○○○○○○○○	1.83	Sloped
Thurl Width	○○○○○○○○○○●○○○○○○○○	0.92	Wide
Rear Legs-Side View	○○○○○○○○○○●○○○○○○○○	-0.17	Posty
Rear Legs-Rear View	○○○○○○○○○○●○○○○○○○○	1.06	Straight
Foot Angle	○○○○○○○○○○●○○○○○○○○	1	Steep
Feet & Legs Score	○○○○○○○○○○●○○○○○○○○	1.48	High
F. Udder Attachment	○○○○○○○○○○●○○○○○○○○	1.44	Strong
Rear Udder Height	○○○○○○○○○○●○○○○○○○○	3.1	High
Rear Udder Width	○○○○○○○○○○●○○○○○○○○	2.85	Wide
Udder Cleft	○○○○○○○○○○●○○○○○○○○	1.44	Strong
Udder Depth	○○○○○○○○○○●○○○○○○○○	0.71	Shallow
Front Teat Placement	○○○○○○○○○○●○○○○○○○○	1.34	Close
Rear Teat Placement	○○○○○○○○○○●○○○○○○○○	1.65	Close
Teat Length	○○○○○○○○○○●○○○○○○○○	-0.17	Short

-2 -1 0 1 2