

MEL PREST
lux

GALLERI URBANE MARFA + DALLAS

lux

Featuring all new work made in the last year, lux pays homage to two cities whose atmospheric, geographic, and architectural qualities offer vastly different sensational impressions. The blankets of fog and floral scents of coastal San Francisco are reflected in paintings like Buttercup Aurora (2017), where the artist's characteristic, hand-painted lines, applied in yellow and white, overlap in loose geometries to create a soft haze of subtle yellow. In contrast, the artist's travels to Mexico City, with its brightly colored markets and buildings, come to mind in works like Barragán 3 (2018) in which lines of green and grey intersect to activate a viewer's eyes with an oscillating energy. Composed of 38 solid-colored panels arranged to shift from pale pink to deep magenta to yellow amber, Bougainvillea (2017) references the vibrant hues found at the studio and home of Mexican architect Luis Barragán.

While many of the works reference these specific locales, Prest's paintings always explore visual phenomena that occur as a result of one's direct encounter with these objects. In some cases, Prest achieves this by enlisting the use of specifically engineered paint, like phosphorescent acrylics that glow in the dark or interference acrylics that shift hues when viewed at different angles, to provide the works with their own optical circumstances.



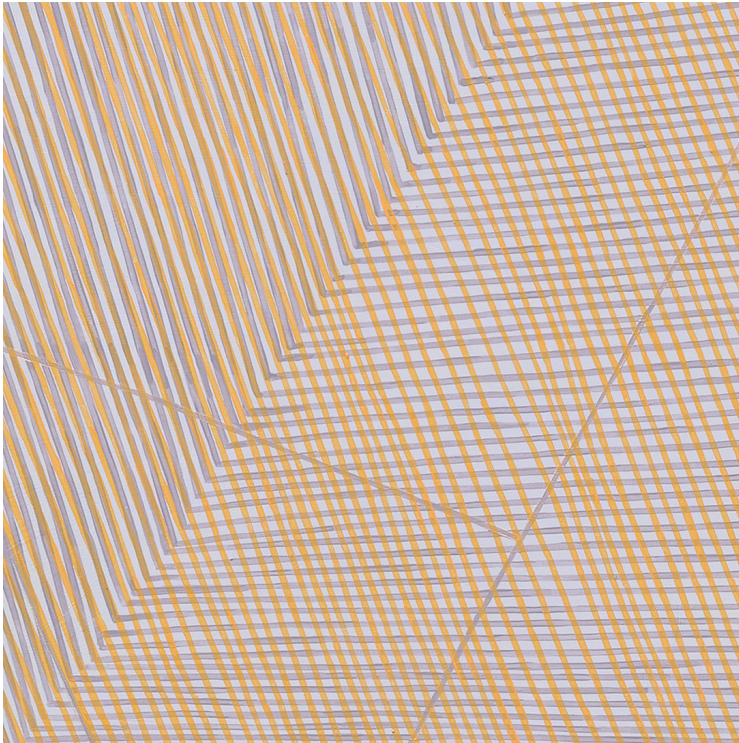
MEL PREST is a non-objective painter whose work is focused on color and perceptual visual relationships and synaesthetic response. She received her BFA in Painting from Rhode Island School of Design and MFA from Mills College in Oakland. Recent solo shows include: Lilac Aura at Chandra Cerrito Contemporary (2017); In Praise of Planetary Time at B Sakata Garo (2016) in Sacramento, COLOR CHANT at Chandra Cerrito Contemporary (2015), Oakland; MoonBrightChime at Galleri Urbane (2014), Dallas. Her works have been included in group shows at: Saturation Point ACME studios, London, UK; The Drawing Center, New York, NY; The Weatherspoon Museum of Art, Durham, NC; Zeitgeist gallery, Nashville, TN; IS Projects, Leiden, The Netherlands; Pentimenti Gallery, Philadelphia, PA. Prest has been awarded funded artist residencies at: Ragdale, The Sam and Adele Golden Artist Foundation, Willapa Bay AiR, The Wassaic Project and Vermont Studio Center, among others. As an independent curator, Prest has organized shows in Los Angeles, San Francisco, New York, Rotterdam, Amsterdam, Berlin, Munich and Zagreb. She is also a founding member of Transmitter, a collaborative curatorial gallery initiative in the Bushwick neighborhood of Brooklyn, NY.

New Works - 60 x 60 Inches

2017-18



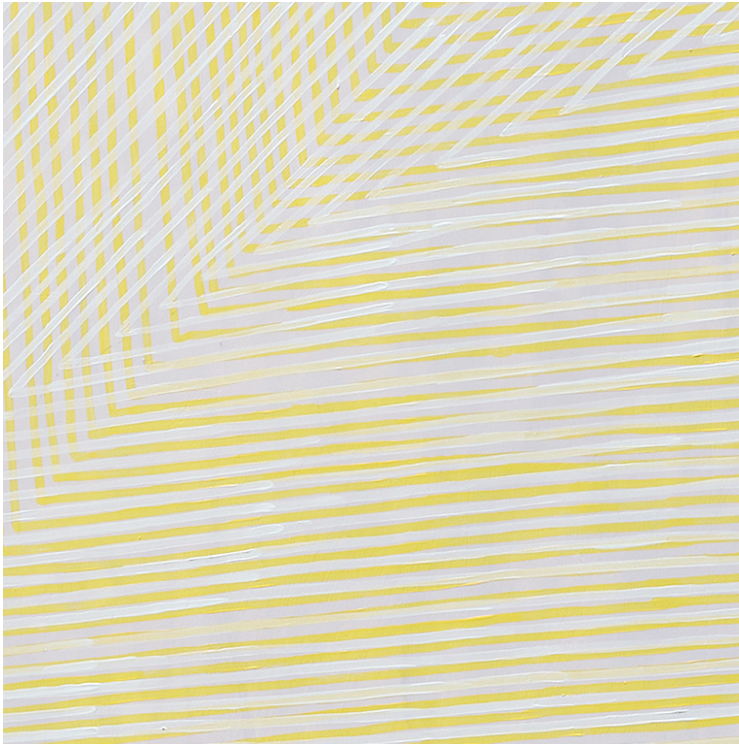
Poppy, 2017
Acrylic and phosphorescent on panel
60 x 60 x 2 inches
\$10,000



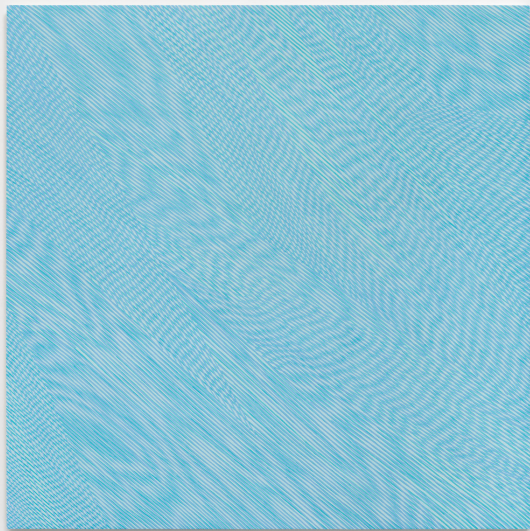
Detail of *Poppy*, 2017



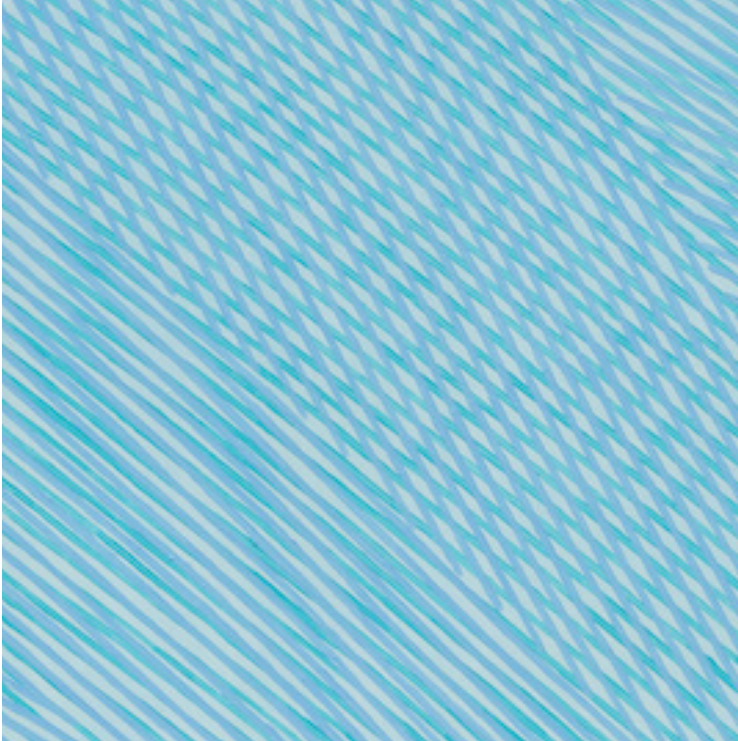
Buttercup Aurora, 2017
Acrylic on panel
60 x 60 x 2 inches
\$10,000



Detail of *Buttercup Aurora*, 2017



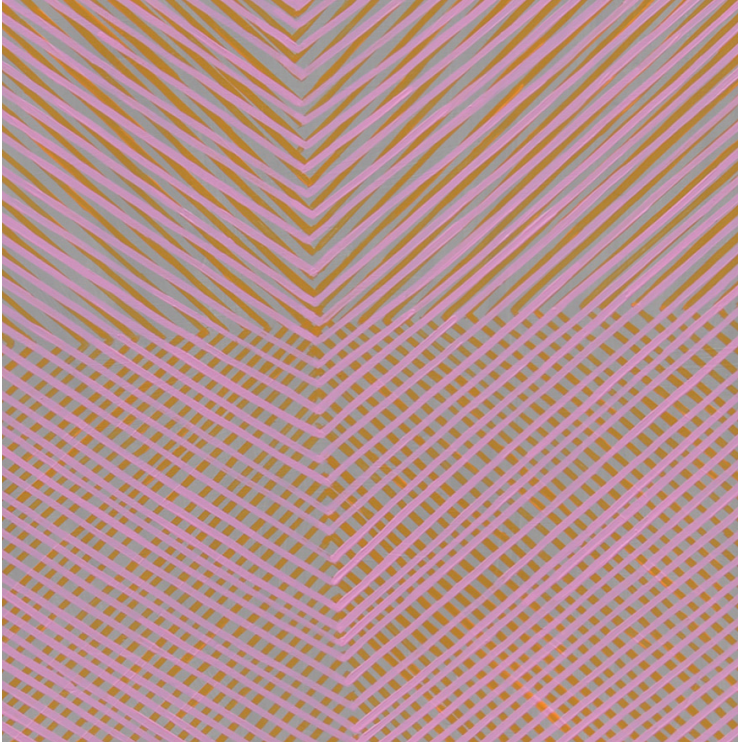
Cloudburst, 2017
Acrylic on panel
60 x 60 x 2 inches
\$10,000



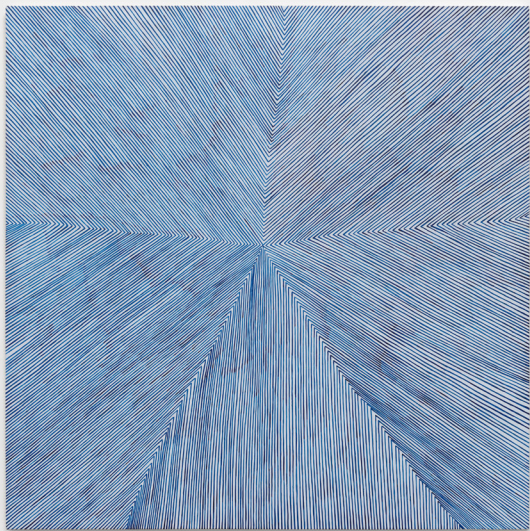
Detail of *Cloud Burst*, 2017



Fucshia Film, 2017
Acrylic on panel
60 x 60 x 2 inches
\$10,000



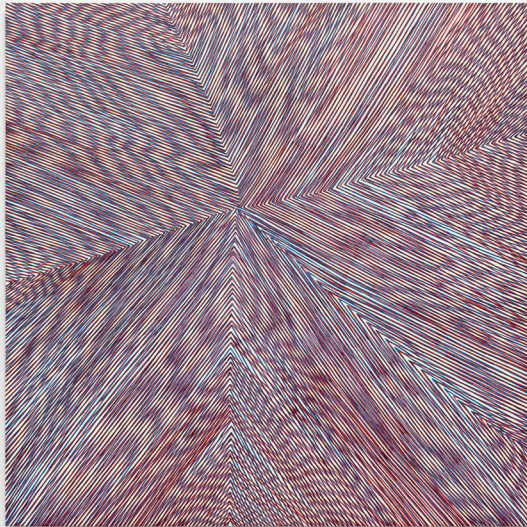
Detail of *Fuchsia Film*, 2017



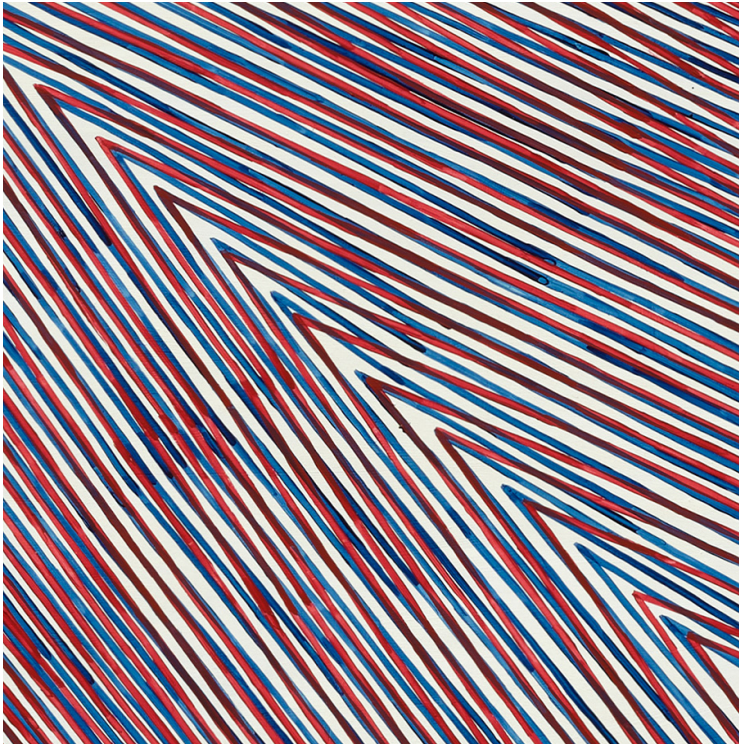
Occipital Noise, 2017
Acrylic on panel
60 x 60 x 2 inches
\$10,000



Detail of *Occipital Noise*, 2017



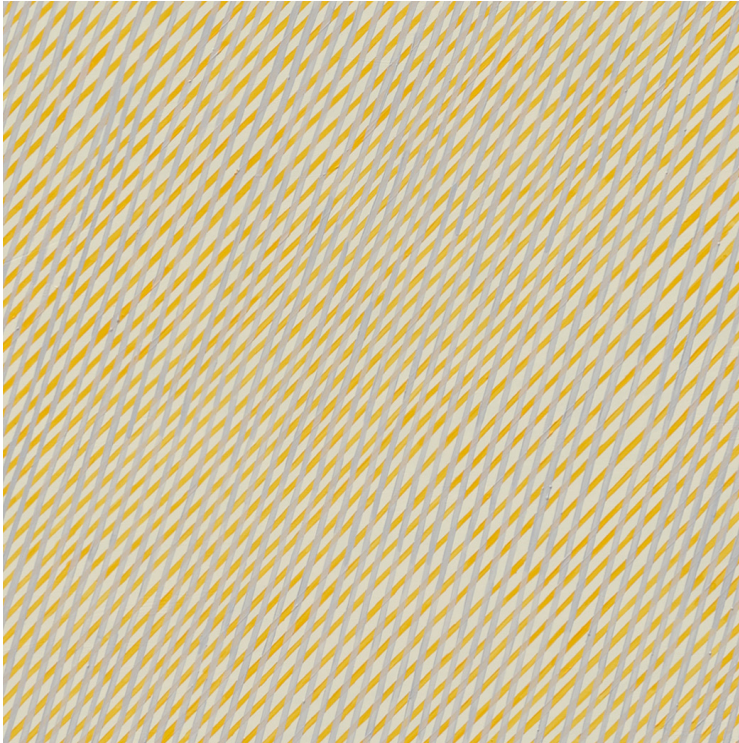
Rose Mint (Wriggley), 2017
Acrylic on panel
60 x 60 x 2 inches
\$10,000



Detail of *Rose Mint* (Wrigley), 2017



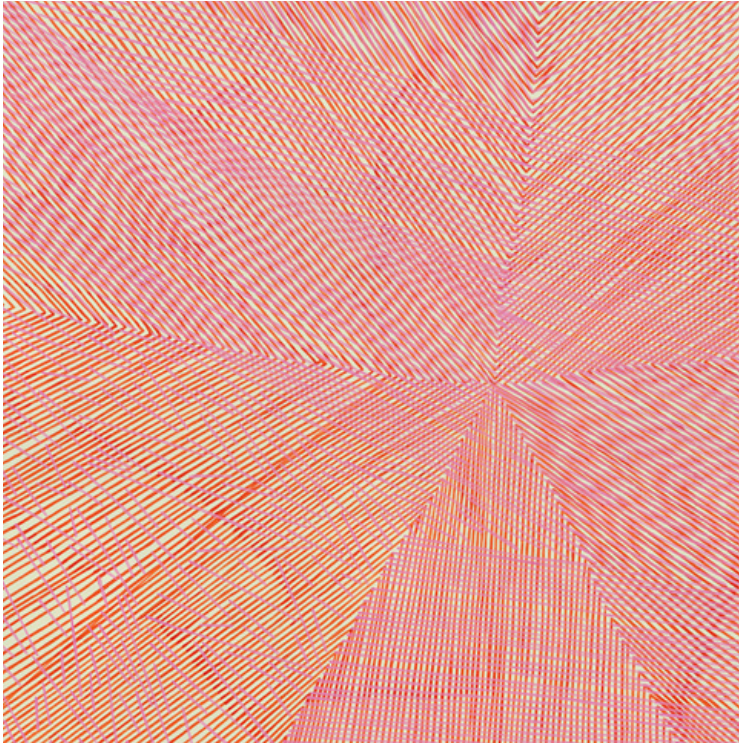
Sun Cloud, 2018
Acrylic on panel
60 x 60 x 2 inches
\$10,000



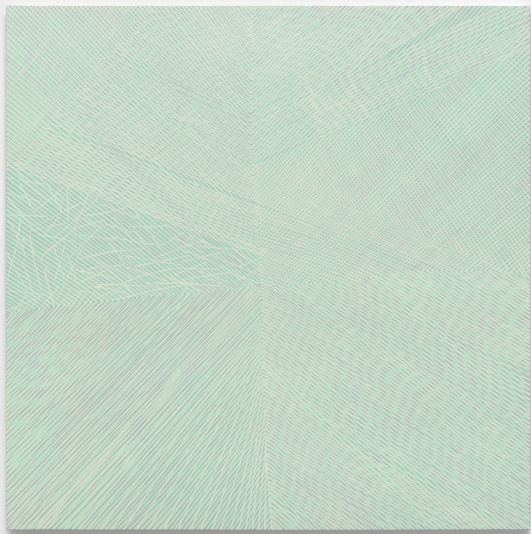
Detail of *Sun Cloud*, 2018



Guayaba, 2018
Acrylic on panel
60 x 60 x 2 inches
\$10,000



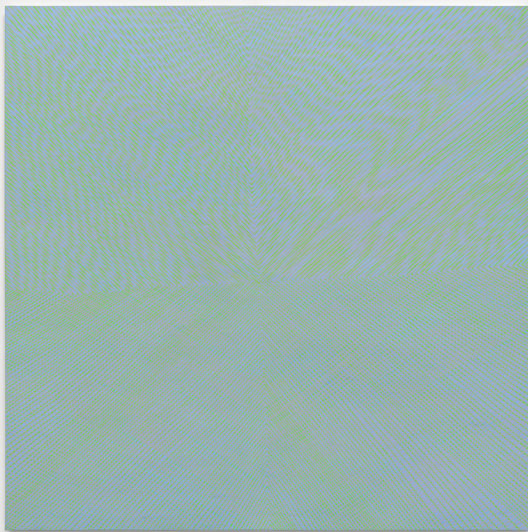
Detail of *Guayaba*, 2018



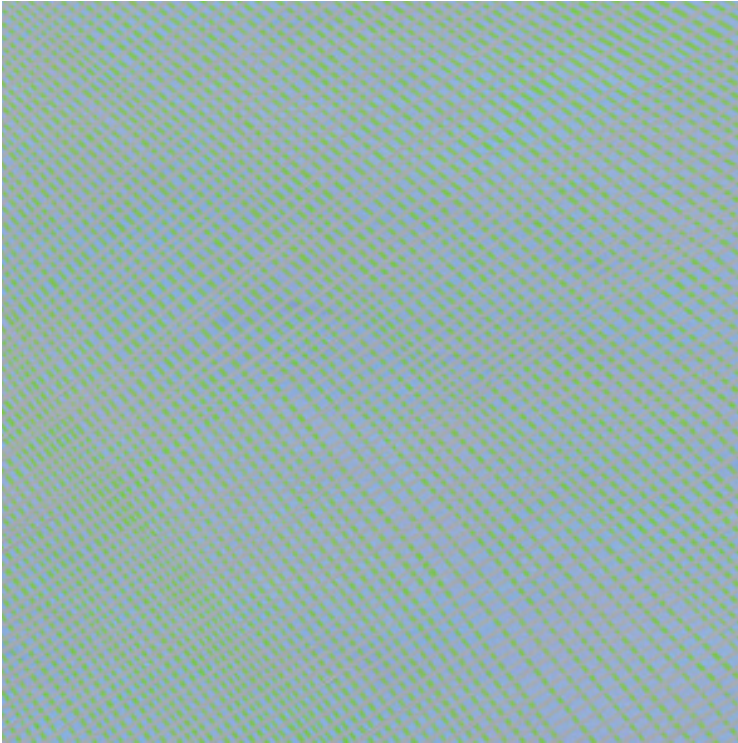
SFGGP, 2018
Acrylic on panel
60 x 60 x 2 inches
\$10,000



Detail of *SFGGP*, 2018



Sky Film, 2018
Acrylic on panel
60 x 60 x 2 inches
\$10,000



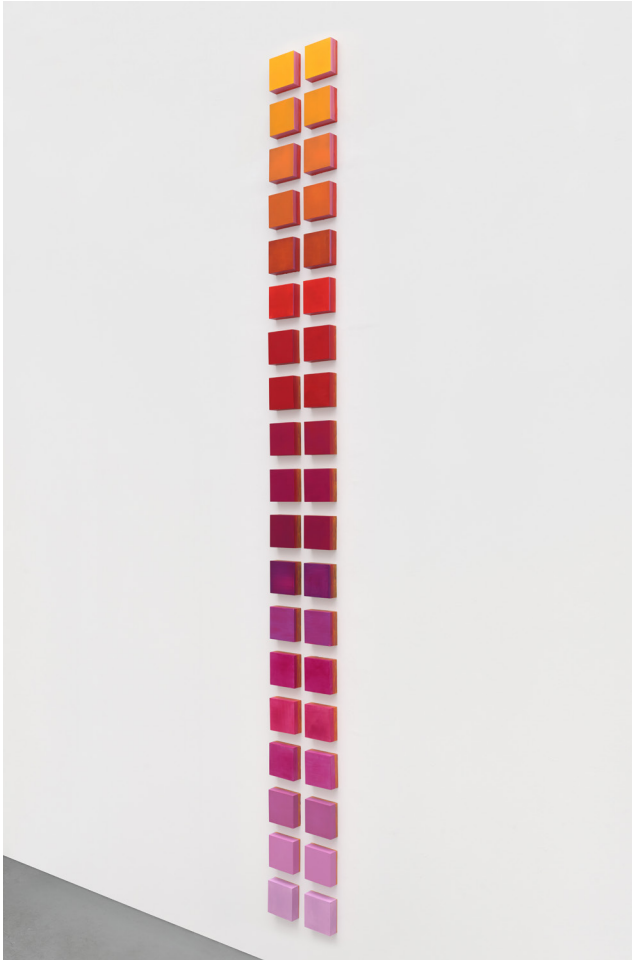
Detail of *Sky Film*, 2018

New Works - Multi Panel

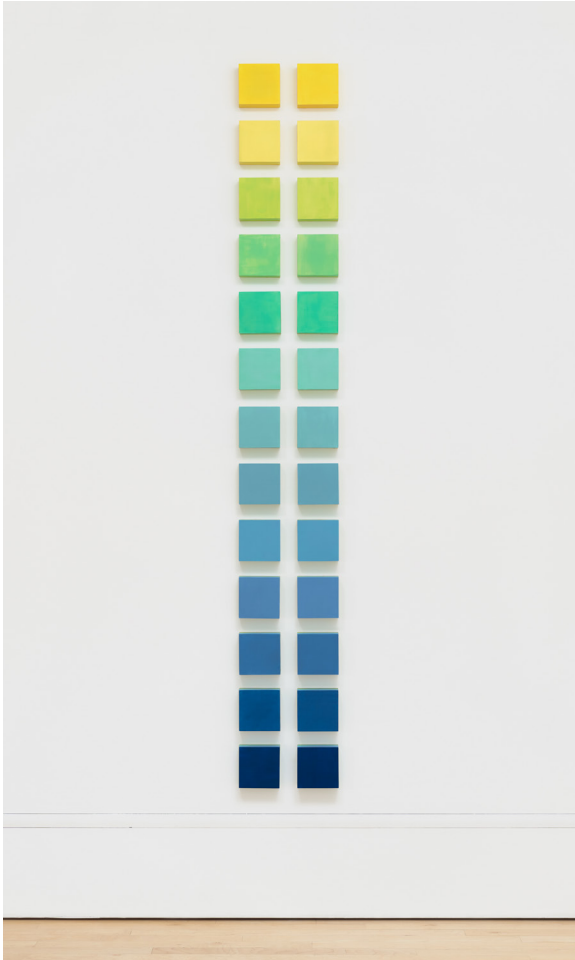
2017-18



Bougainvillea, 2017
Acrylic on thirty-eight 5 x 5 inch panels
131 x 12 x 2 inches overall
\$15,000



Side View of *Bougainvillea*, 2017



Iris Ladder, 2017
Acrylic on twenty-eight 5 x 5 inch panels
96 x 12 x 2 inches overall
\$12,000



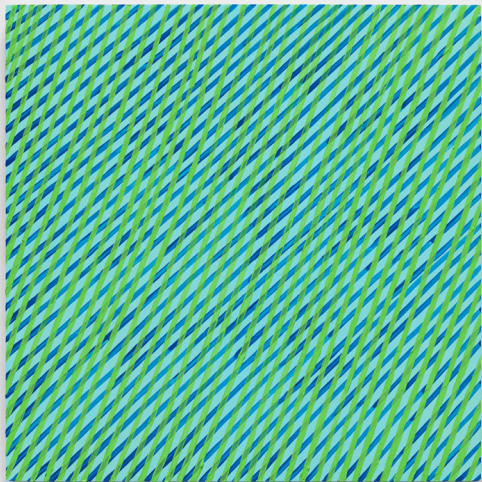
Orchid Miami Ladder, 2018
Acrylic on twenty 5 x 5 inch panels
68 x 12 x 2 inches overall
\$9,000

New Works - 12 x 12 Inches

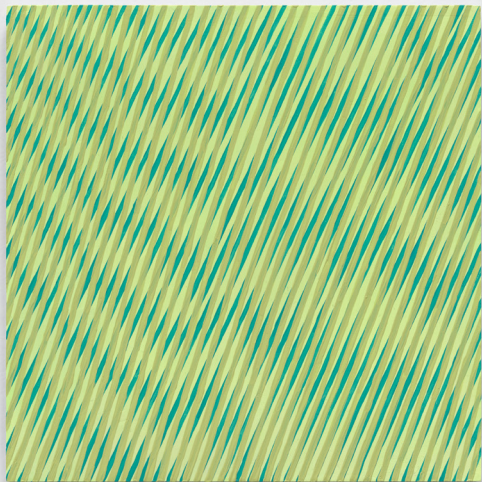
2017-18



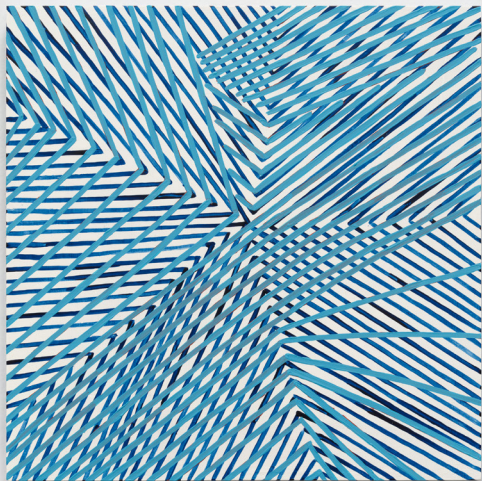
Barragan 1, 2018
Acrylic on panel
12 x 12 x 2 inches
\$1,500



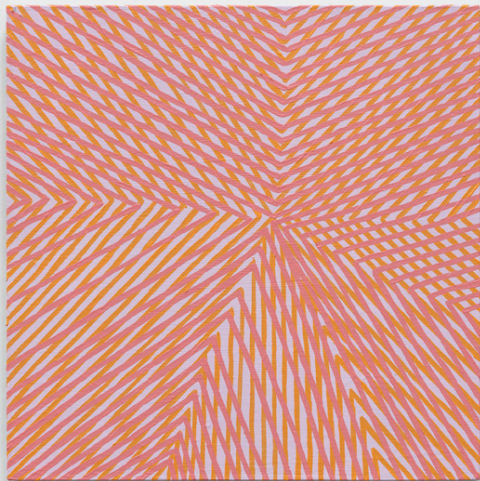
Barragan 2, 2018
Acrylic on panel
12 x 12 x 2 inches
\$1,500



Barragan 3, 2018
Acrylic on panel
12 x 12 x 2 inches
\$1,500



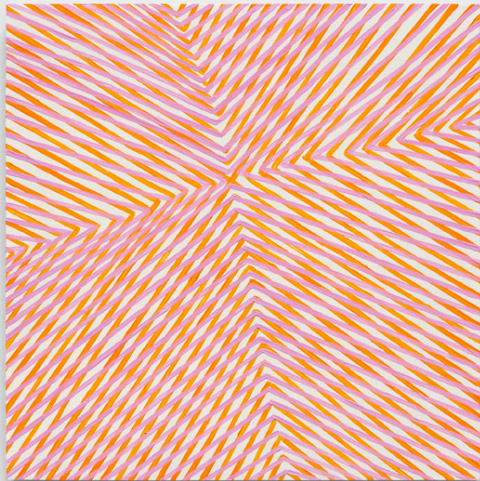
Blue RIP, 2017
Acrylic on panel
12 x 12 x 2 inches
\$1,500



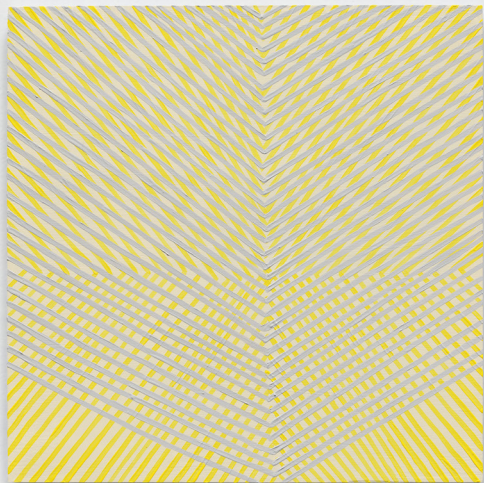
Candybox, 2017
Acrylic on panel
12 x 12 x 2 inches
\$1,500



Fog Light, 2017
Acrylic on panel
12 x 12 x 2 inches
\$1,500



Lady Baltimore, 2017
Acrylic on panel
12 x 12 x 2 inches
\$1,500



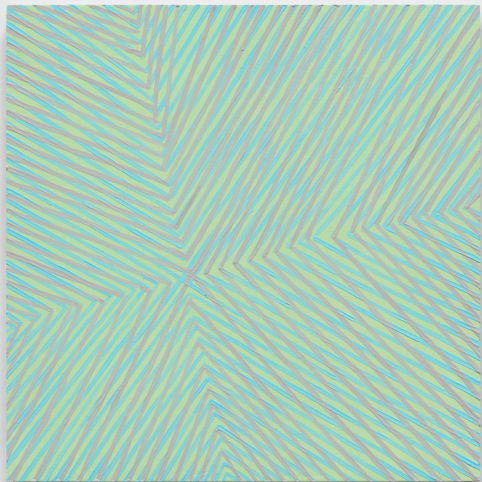
Lemon Shield, 2018
Acrylic on panel
12 x 12 x 2 inches
\$1,500



Mexico, 2018
Acrylic on panel
12 x 12 x 2 inches
\$1,500



Morning Light, 2018
Acrylic on panel
12 x 12 x 2 inches
\$1,500



Noe Valley, 2018
Acrylic on panel
12 x 12 x 2 inches
\$1,500



Occipital Noise, 2017
Acrylic on panel
12 x 12 x 2 inches
\$1,500



Oxford Blue, 2017
Acrylic on panel
12 x 12 x 2 inches
\$1,500



Red Vines, 2017
Acrylic on panel
12 x 12 x 2 inches
\$1,500

GALLERI URBANE

2277 Monitor St. Dallas TX 75207

galleriurbane.com

325.226.8015

art@galleriurbane.com