

ARDEN BENDLER BROWNING

ALL AT ONCE



GALLERI URBANE MARFA + DALLAS

ALL AT ONCE

For the traveler of today, smartphones have become the ultimate companion. Replacing the paper map, Google Maps will give voice instructions on how to get from point A to point B. In place of the point-and-shoot camera, iPhones and Androids capture high-definition photographs that can be shared instantly to multiple social networking platforms, letting one share up-to-the-moment travel updates with friends and family. Visiting any landmark today, the tourist with smartphone in hand has become a familiar icon.

This modern notion of traveling serves as the impetus for Arden Bendler Browning's upcoming solo exhibition of paintings titled *All at Once*, the artist's first with Galleri Urbane. Having recently embarked on a 7,000-mile road trip with her family, the artist created a visual diary of the trek, taking photographs on her phone and capturing sketches of the moving and evolving landscape from the seat of her vehicle. Back in the studio, the endless number of images produced became the source material for the series of paintings. The forms of cities, towns, plains, glaciers, and hot springs are distorted as they are loosely painted in overlapping layers of vibrant color.



Based in Philadelphia, Bendler Browning holds a BFA in Art with honors from Carnegie Mellon University (1997), a Master of Studio Art with high distinctions from Sydney College of the Arts (2000), and an MFA in Painting from Tyler School of Art (2003). Featured twice in *New American Paintings*, her work has also been displayed in exhibitions at galleries and art fairs across the country and placed in numerous private and public collections. A commissioned permanent work for the City of Philadelphia at the Philadelphia International Airport, awarded through a rigorous competition and selection process, was recently installed in February 2017.



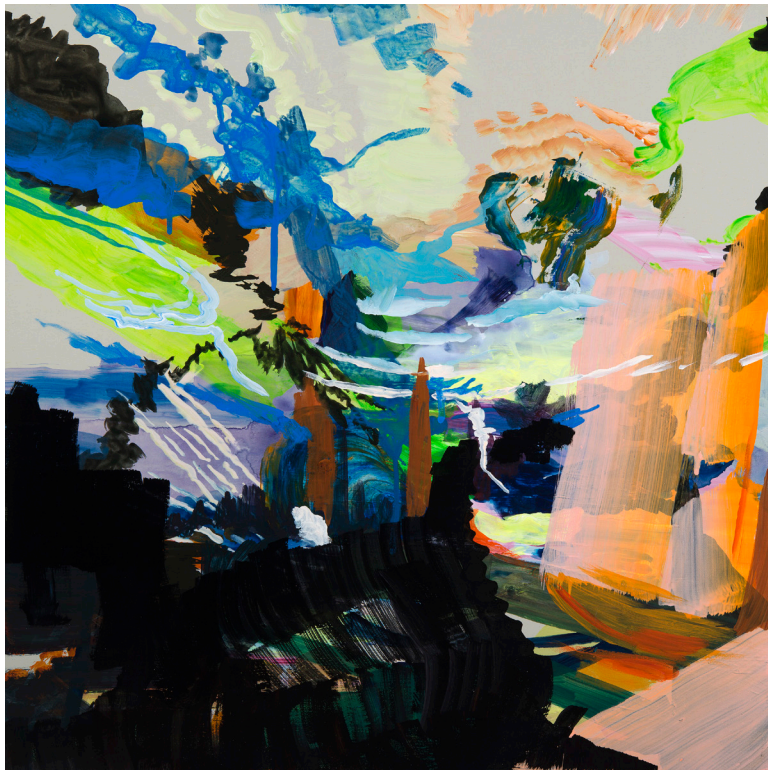
Backtrack, 2017
Flashe acrylic, acrylic ink
on panel
48 x 48 in
\$5,500



Backtrack, detail



Bigger Picture, 2017
Flashe acrylic,
acrylic medium,
acrylic ink, acrylic guache
on panel
48 x 60 in
\$5,800



Upward Climb, 2015
Flashe and acrylic guache
on panel
20 x 20 in
\$3,000



Burst, 2016
Flashe acrylic on panel
60 x 108 in
\$12,000



Rendering, 2015
Flashe acrylic, acrylic guache
on panel
20 x 20 in
\$3,000



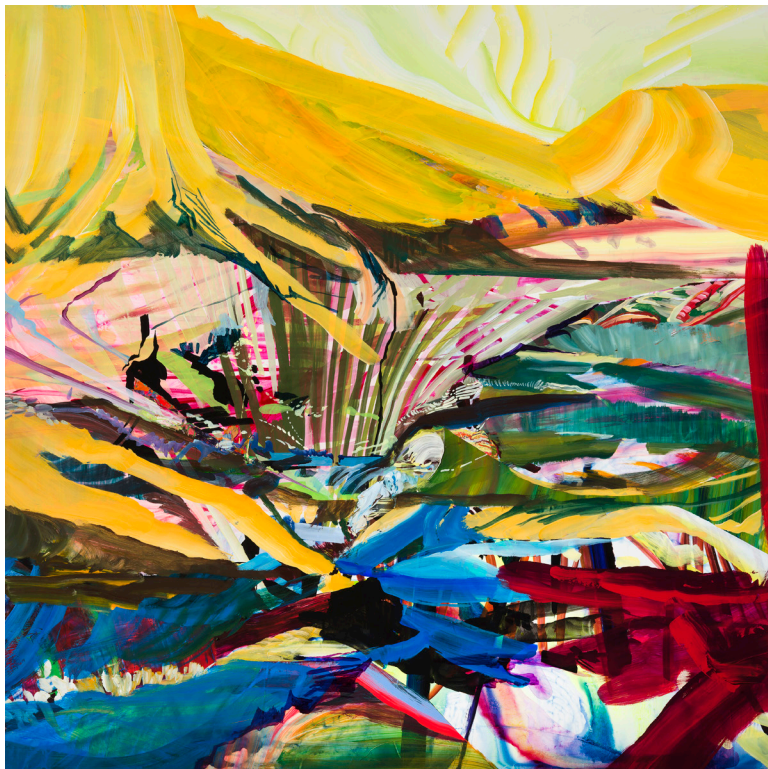
Squint, 2016
Flashe acrylic, acrylic on panel
48 x 108 in
\$11,000



View Unseen, 2015
Flashe acrylic, acrylic guache
on panel
60 x 60 in
\$6,500



Forgotten History, 2017
Flashe acrylic, acrylic medium,
acrylic guache, acrylic ink
on panel
60 x 60 in
\$6,500



If Time Allows, 2017
Flashe acrylic, acrylic ink
on panel
48 x 48 in
\$5,500



Out of Range, 2017
Flashe acrylic, acrylic ink
on panel
48 x 60 in
\$5,800



Out of Range, detail



Reversed Course, 2017, flashe , acrylic medium, guache, and acrylic ink on panel, 48 x 60 in, \$5,800

GALLERI URBANE

2277 Monitor St. Dallas TX 75207

galleriurbane.com

325.226.8015

art@galleriurbane.com