

Waterton Lakes National Park



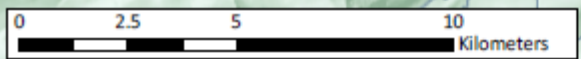
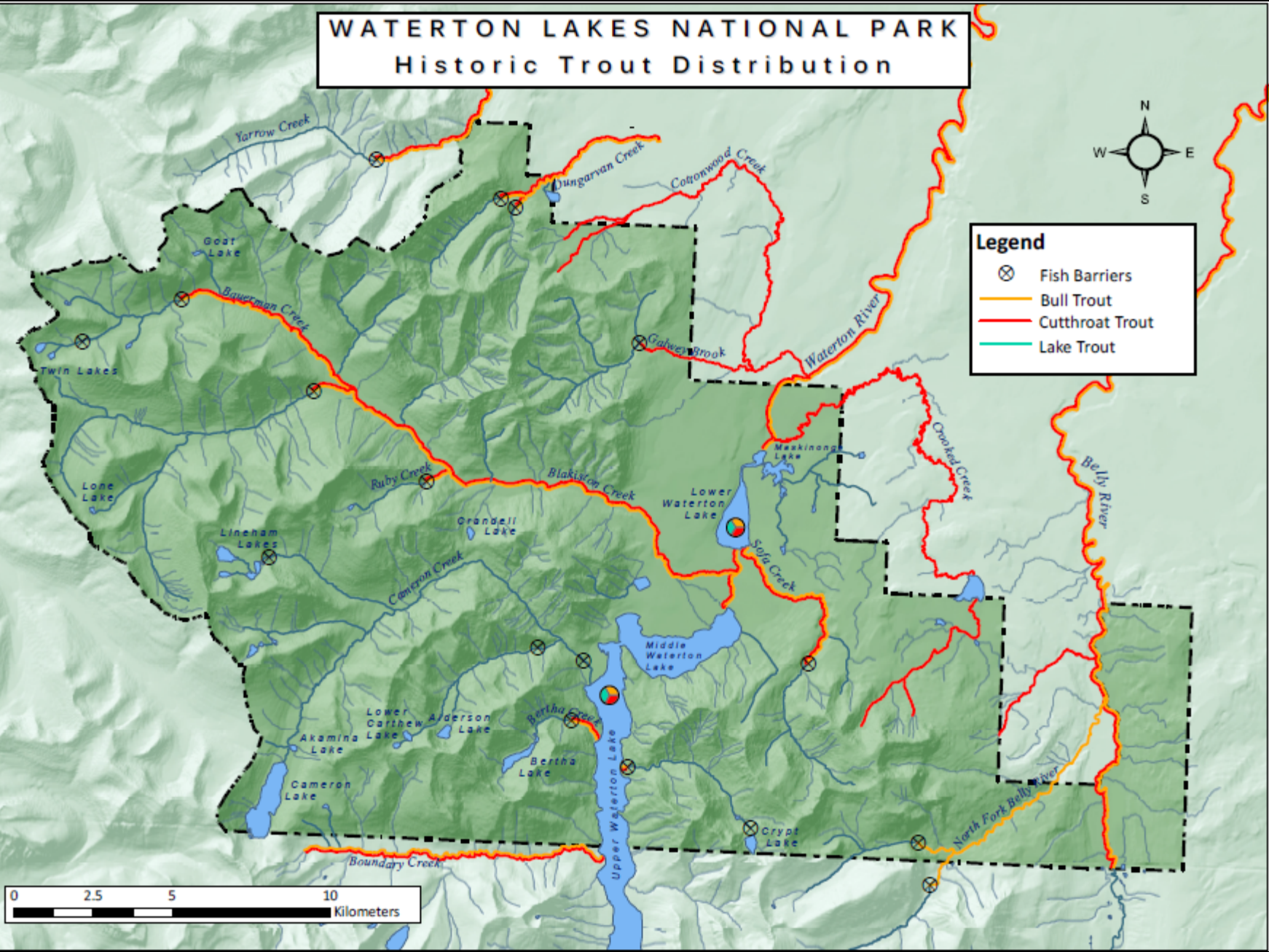
2018 CMP Forum: Action on Recovery
Native Salmonid Recovery in the Crown

WATERTON LAKES NATIONAL PARK Historic Trout Distribution



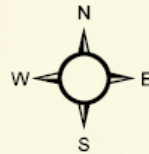
Legend

- ⊗ Fish Barriers
- Bull Trout
- Cutthroat Trout
- Lake Trout



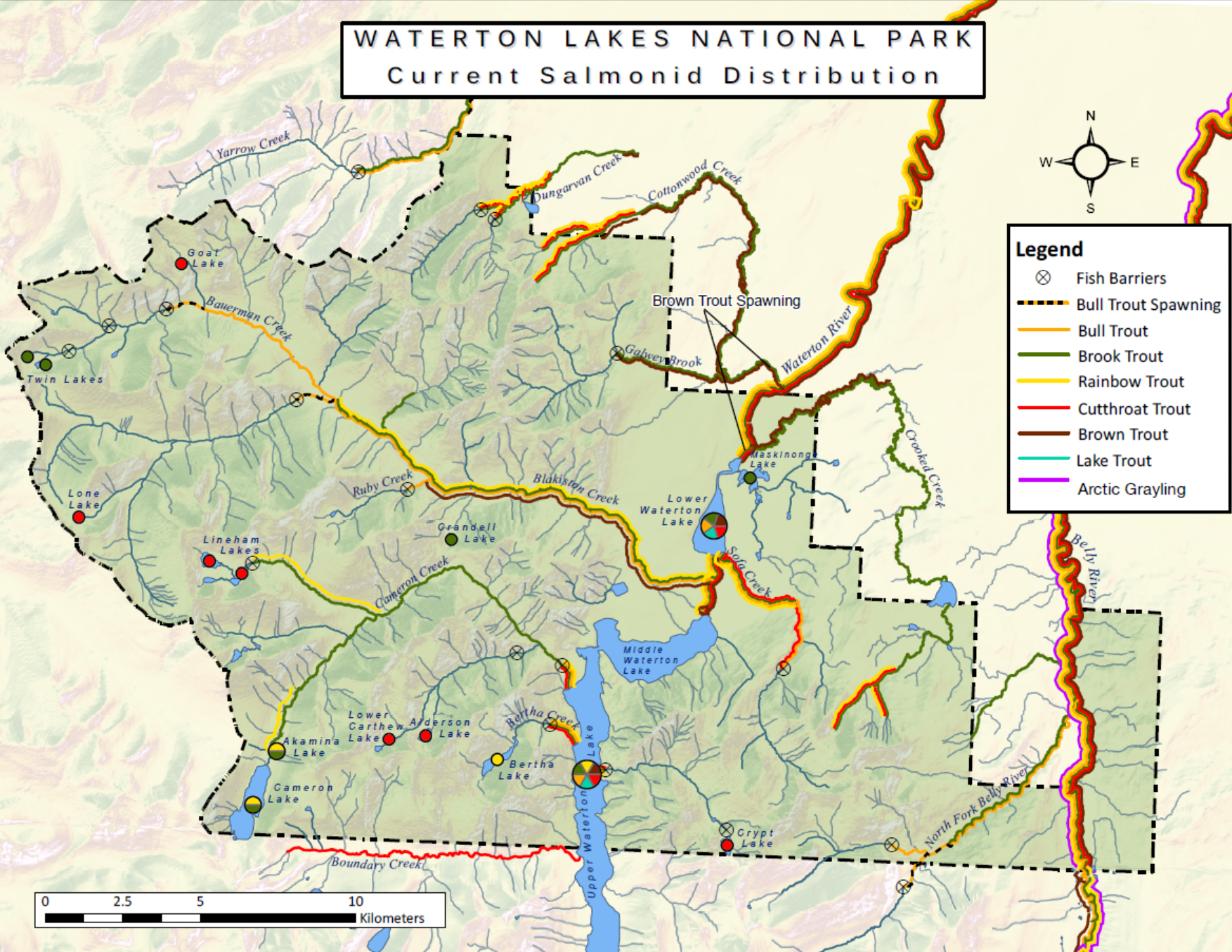
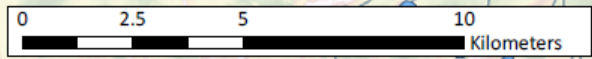
WATERTON LAKES NATIONAL PARK

Current Salmonid Distribution



Legend

- ⊗ Fish Barriers
- Bull Trout Spawning
- Bull Trout
- Brook Trout
- Rainbow Trout
- Cutthroat Trout
- Brown Trout
- Lake Trout
- Arctic Grayling





Waterton Lakes
National Park

Parc national des
Lacs-Waterton

Kenow Fire Burn Severity



Total size: 950,1 km²
Total area in Park: 180 km²
% of national park burned: 20.4%

Burn Severity refers to the amount of vegetation change between pre- and post-fire conditions. It is a way of describing the amount of structural change.

