

Crown Managers Partnership Agency Meeting

March 14, 2016



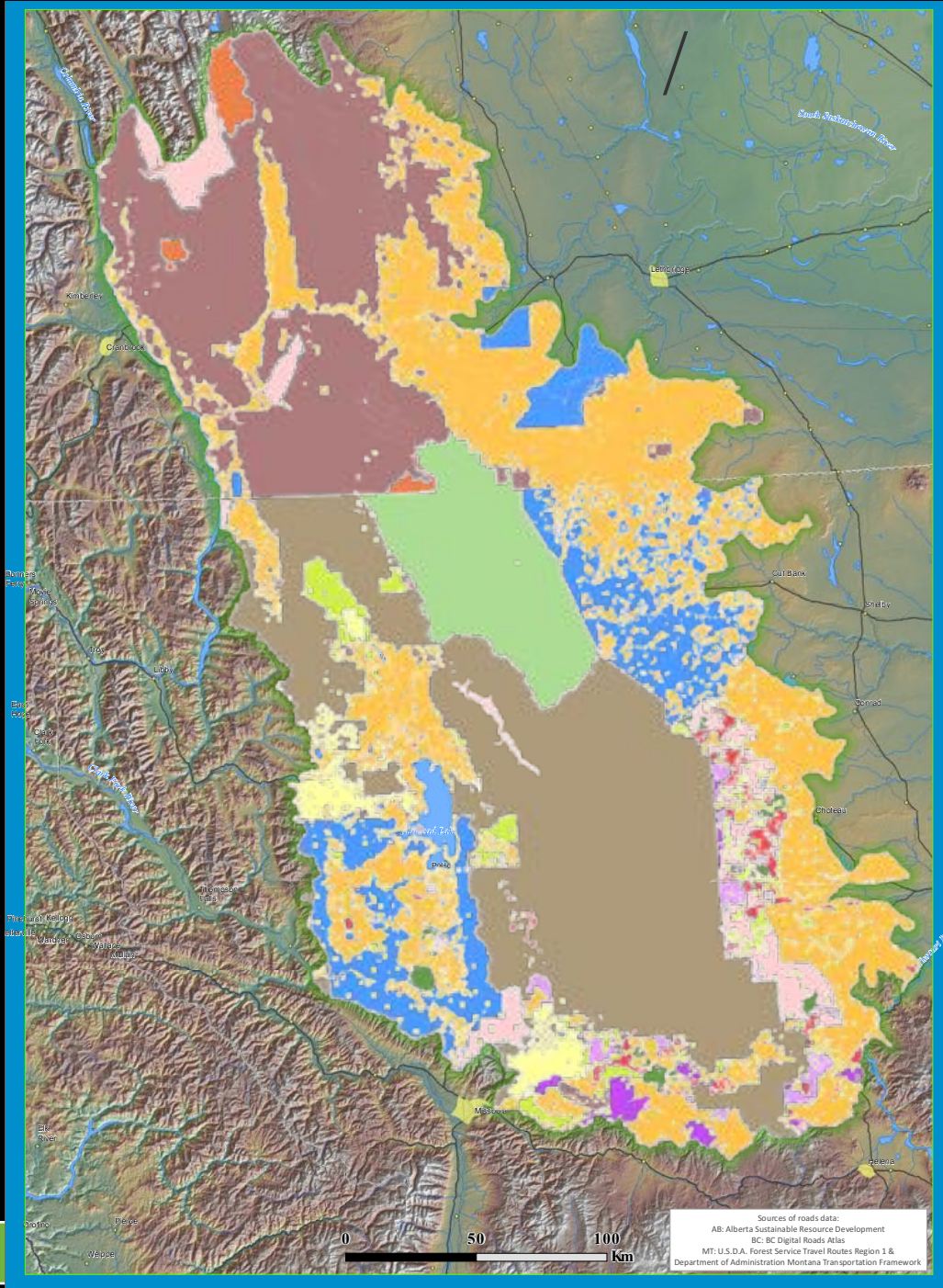
2016 CMP Forum: Coordinating Actions to Conserve 5 Needle Pines



Today's Agenda

- Welcome/Introductions
 - New Strategic Conservation Framework
 - MOU Update
- Transboundary Conservation Initiative/Accomplishments/Work-plan
- Agency Updates
- Adjourn

Jurisdictional Complexity in the Crown of the Continent



- First Nations/Tribal land
- National Parks
- US Bureau of Land Management
- US Fish & Wildlife
- US Forest Service
- Federal
- Provincially Protected Areas
- State Trusts
- Montana Fish, Wildlife, & Parks
- Provincial/State
- Private Conservation Land
- Plum Creek Timber
- Private Land

Crown Managers Partnership



- Cranbrook, B.C. – 2001
- 23 agencies
- Partnership and coordination across boundaries and scales
- Seeking collaborative solutions to shared natural resource management challenges



2016 CMP Forum: Coordinating Actions to Conserve 5 Needle Pines



Crown Managers Partnership

- **Alberta Agriculture, Food and Rural Development**
- **Alberta Environment and Parks**
- **BC Forests, Cranbrook Forest District**
- **BC Sustainable Resource Development**
- **BC Ministry of Water, Land and Air Protection, Environmental Stewardship**
- **Blackfeet Tribe**
- **Confederated Salish-Kootenai Tribes**
- **K'tunaxa Kinbasket First Nation**
- **Blood First Nation**
- **Montana State Flathead Basin Commission**
- **Montana Department of Fish Wildlife and Parks**
- **Montana Department of Natural Resources and Conservation**
- **Montana State Lands and Forests**
- **Parks Canada, Waterton Lakes National Parks**
- **U.S. Bureau of Indian Affairs**
- **U.S. Fish and Wildlife Service**
- **U.S. Forest Service, Flathead National Forest & Lewis and Clark Nation**
- **U.S. National Park Service, Glacier National Park**
- **U.S. Geological Survey**
- **Universities of Montana, Calgary and Mount Royal**



CMP Steering Committee

- Mary Riddle-Current Chair, Glacier National Park
- Dennis Madsen, Waterton Lakes National Park
- Rich Janssen, Confederated Salish and Kootenai Tribes
- Ian Dyson, Alberta Environment and Parks
- Cindy Sawchuck, Alberta Environment and Parks
- Rob Simieritsch, Alberta Environment and Parks
- Peter Swain, Alberta Environment and Parks
- Mike Munoz, Lewis and Clark National Forest
- Rob Davies, Flathead National Forest
- Julie DalSoglio, Environmental Protection Agency
- Steve Frye, Montana Dept. Natural Resources
- Mike Bruised Head, Blood First Nation
- Caryn Miske, Flathead Basin Commission, State of Montana
- Greg Watson, US Fish and Wildlife Service
- Erin Sexton, University of Montana
- Len Broberg, Transboundary Program, University of Montana
- Mike Quinn, Mount Royal University
- Greg McDermid, University of Calgary
- Sasha Harriott-Secretariat



CMP Annual Forums



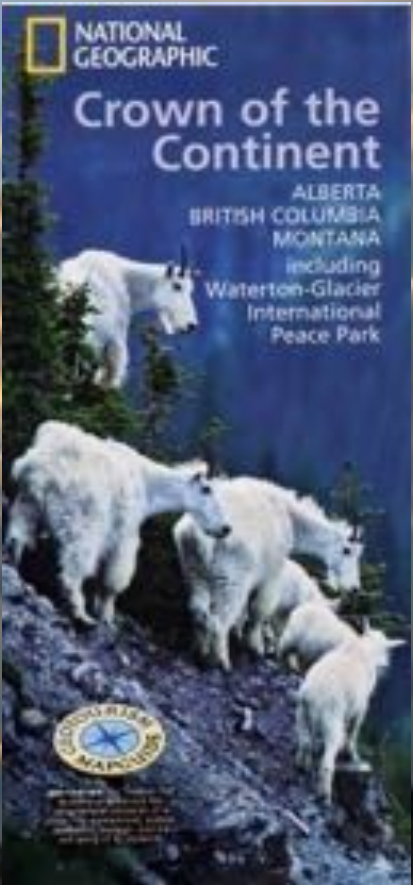
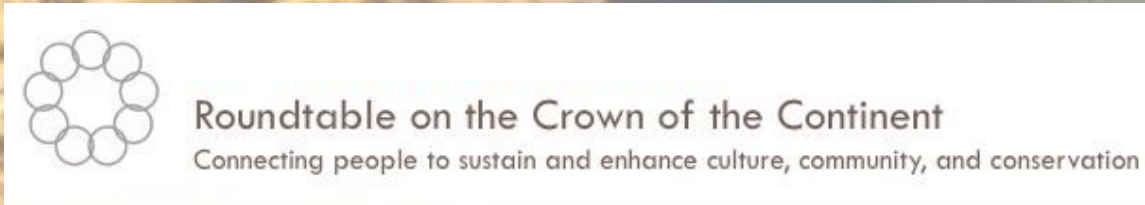
- February 2001, Cranbrook BC
- April 2002, Whitefish, MT: **Cumulative Effects**
- April 2003, Pincher Creek, AB: **ALCES**
- February 2004, Cranbrook, BC: **Fire**
- March 2005, Kalispell, MT: **Invasive plants**
- March 2006, Lethbridge, AB: **Watershed Partnerships**
- March 2007, Cranbrook, BC: **Ecological Health**
- March 2008, Kalispell, MT: **Carnivores**
- February 2009, Pincher Creek, AB: **Biodiversity**
- April 2010, Fernie, BC: **Climate Change**
- March 2011, Polson, MT: **Aquatic Invasive Species**
- March 2012, Lethbridge, AB: **Connections to the Land, Tribal and First Nations in the Crown**
- March 2013, Cranbrook BC: **Large Landscapes; Working Across Boundaries**
- March 2014, Missoula, MT: **Climate Change Adaptation**
- March 2015, Lethbridge, AB: **Terrestrial Invasive Plants**



2016 CMP Forum: Coordinating Actions to Conserve 5 Needle Pines



Crown of the Continent and Regional Initiatives



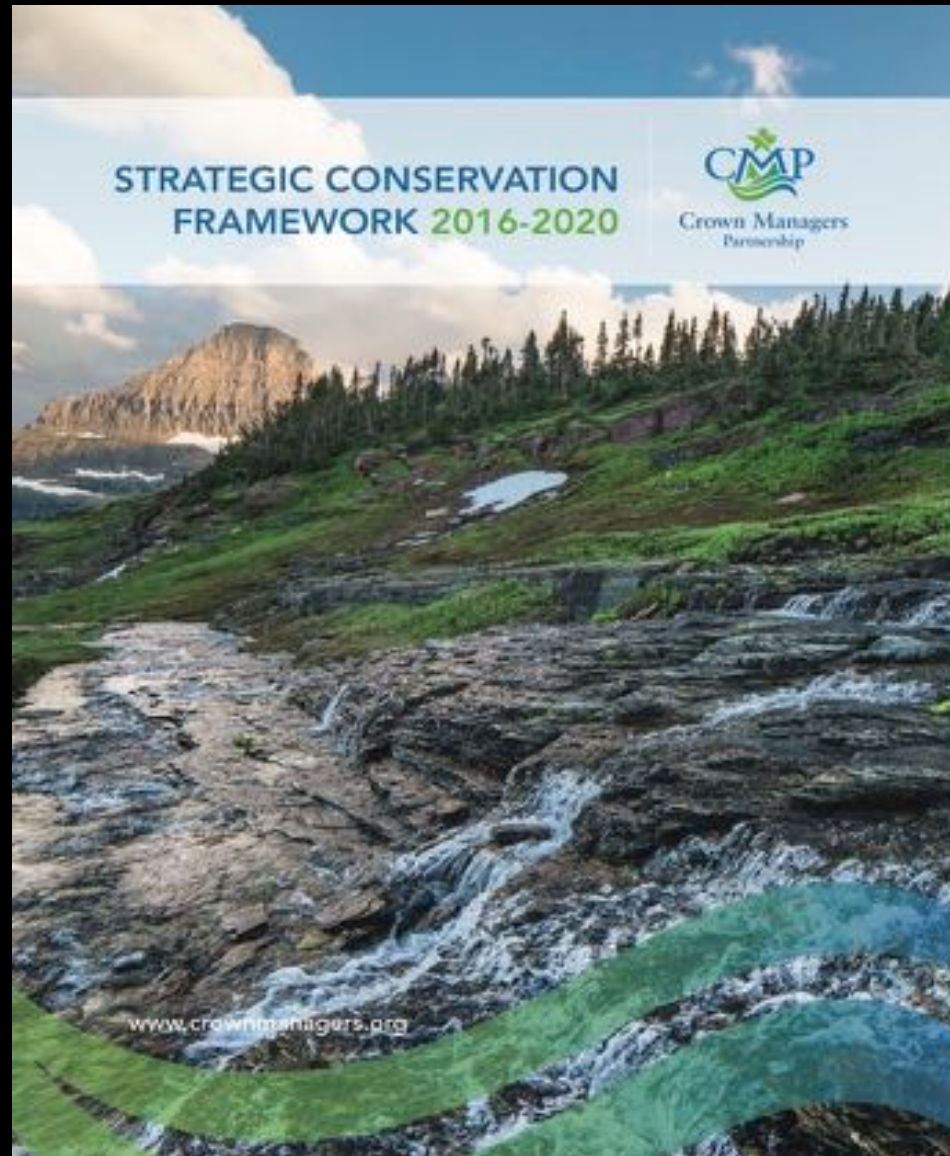
Sub Regional Crown Initiatives

- Tribes and First Nation initiatives
- Kootenay Conservation Program
- Oldman Watershed Council
- Blackfoot Challenge
- Southwest Crown Collaborative
- Waterton Biosphere
- Clearwater Resource Council
- Southern Foothills Initiative
- Swan Valley Connections



SOUTHWESTERN CROWN
COLLABORATIVE

2016 – 2020 Strategic Conservation Framework



2016 CMP Forum: Coordinating Actions to Conserve 5 Needle Pines



Resilient Lands and Waters Initiative

Resilient Lands and Waters Initiative: 2nd tranche – 6/24/15



Snapshot: Resilient Lands and Waters Initiative

Contents

Introduction.....	2
California Headwaters Partnership	3
California's North-Central Coast and the Russian River watershed.....	6
Crown of the Continent.....	8
Partners List.....	11

CMP Memorandum of Understanding

CROWN MANAGERS PARTNERSHIP
MEMORANDUM OF COOPERATION AND UNDERSTANDING
AMONGST FEDERAL, PROVINCIAL AND STATE GOVERNMENTS

Preamble

For this Memorandum of Understanding, the participants recognize 1) the environmental values of this unique landscape called the 'Crown of the Continent'; 2) that all sovereigns exercise jurisdiction over separate portions of the landscape; 3) our concerted support of the vision and objectives of the Crown Managers Partnership and 4) the need to collaborate and work together to build positive and productive working relationships on trans-boundary issues within the Crown ecosystem. This Memorandum of Understanding supports collaborative work by the parties to ensure transboundary ecological health in the Crown of the Continent Ecosystem. Additional governments may become participants to this agreement at any time by notifying the CMP in writing.

This Memorandum of Understanding replaces the October 29th, 2007 Memorandum of Understanding and Cooperation between the Government of the State of Montana, United States and the Government of the Province of Alberta, Canada, Respecting the Crown Managers Partnership.

In the spirit of promoting closer relations amongst the governments managing natural resources in the Crown of the Continent ecosystem, the participants recognize:

- a) That the federal, tribal/first nation, provincial and state governments share common borders in the portion of the Rocky Mountains known as the 'Crown of the Continent';
- b) That the Crown of the Continent ecosystem is one of North America's most ecologically diverse and jurisdictionally fragmented regions;
- c) That the Crown of the Continent has been recognized for its aesthetically stunning landscapes, large tracts of pristine land, and rich biodiversity, and that portions of this

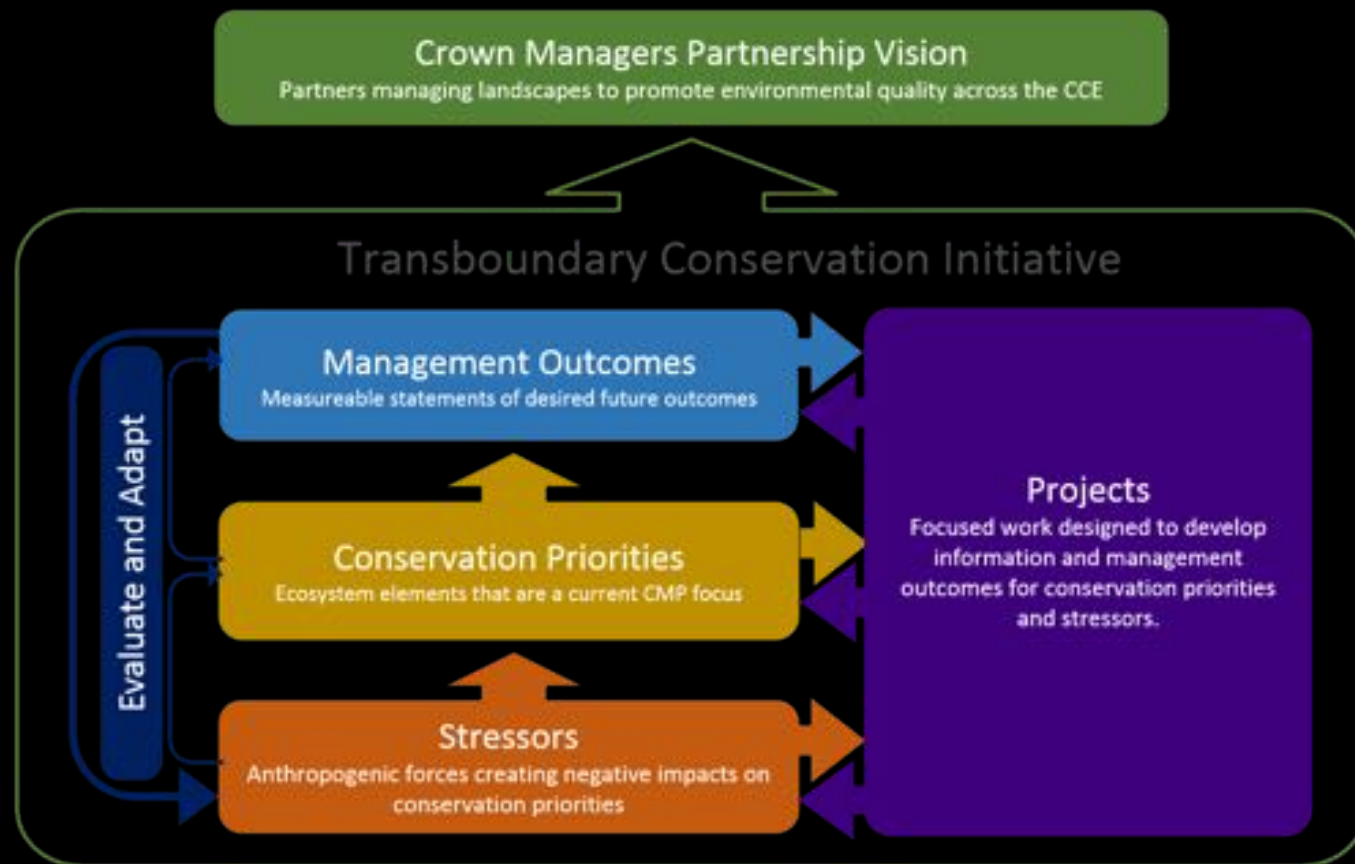
A scenic landscape photograph of a mountain range. The foreground shows a rocky, reddish-brown slope. Below it, a deep valley is filled with dense green forest. In the distance, a range of rugged mountains with various shades of brown, tan, and red extends across the horizon under a bright blue sky with scattered white clouds. A small, dark green lake is visible in the lower left foreground.

***The Transboundary Conservation Initiative
and
2016 Accomplishments***

Transboundary Conservation Initiative

Stressors and Conservation Priorities

- Climate Change
- Land Use Change
- Invasive Species
- Bull Trout/Westslope CT
- Whitebark pine
- Grizzly bear
- Meso-carnivores

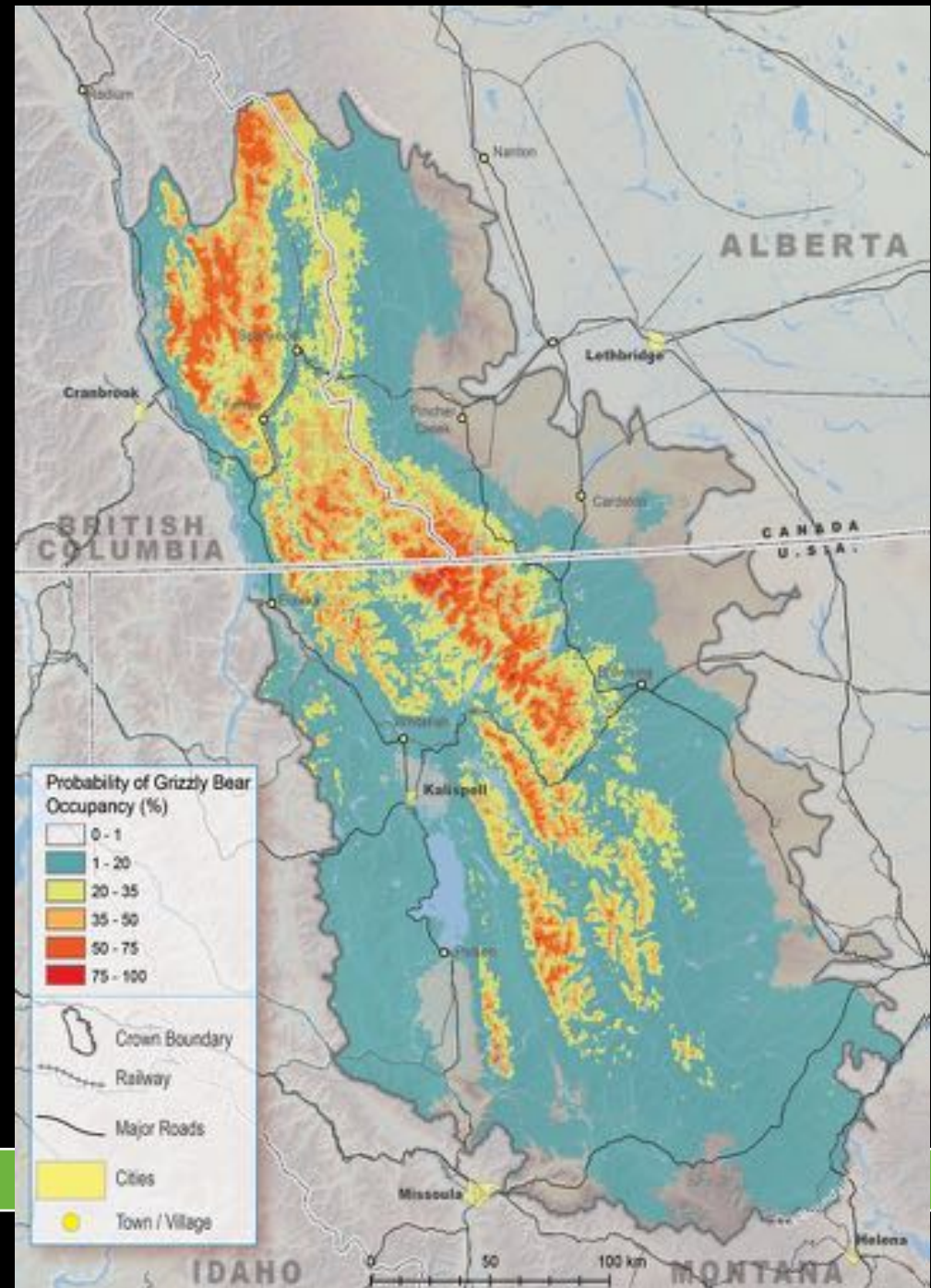
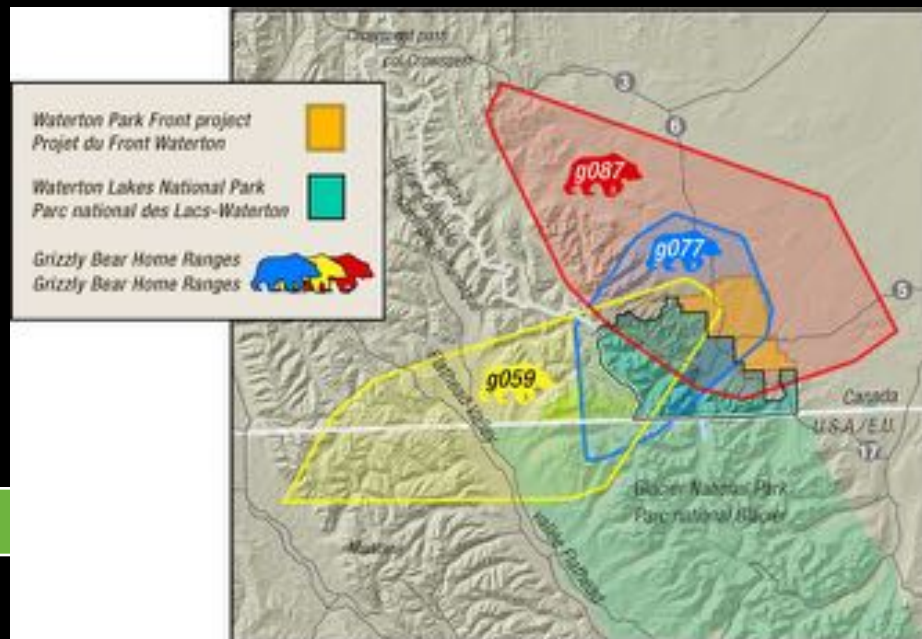


2016 CMP Forum: Coordinating Actions to Conserve 5 Needle Pines

CCE Transboundary Foundational Database

The need for data across boundaries

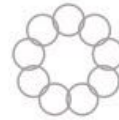
- *Common Template*
- *Common Set of Facts*
- *Collectively Identified Management Opportunities, Objectives and Out-comes*



Linking Initiatives toward Landscape Outcomes

Crown Adaptation Partnership (CAP)

- Crown Managers Partnership
- Crown Conservation Initiative
- The Wilderness Society
- US Department of Agriculture, Region 1 USFS



Roundtable on the Crown of the Continent
Connecting people to sustain and enhance culture, community, and conservation



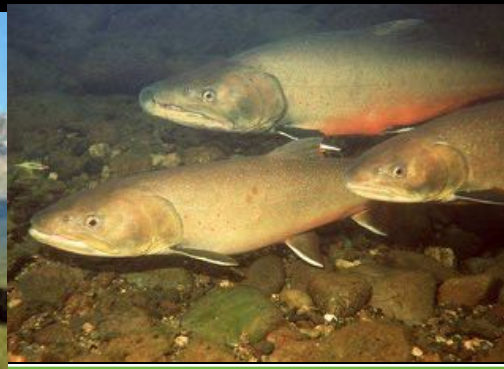
2016 CMP Forum: Coordinating Actions to Conserve 5 Needle Pines



Climate Change Adaptation

Common Conservation Priorities:

- Native Trout
- Invasives Species
 - AIS
 - Terrestrial Invasive Plants
- Whitebark pine



2016 CMP Forum: Coordinating Actions to Conserve 5 Needle Pines

Conservation Priorities

Native Salmonids



- Using Muhlfeld, et al, population assessments to develop a network of climate adaptation strategies for native salmonids

- Confirm opportunities to coordinate strategies across scales for local and regional impact



Taking Action on Climate Change Adaptation:
Piloting Adaptation Strategies to Reduce Vulnerability and Increase
Resilience for Native Salmonids in the Crown of the Continent Ecosystem



Photo Source: U.S. Geological Survey, Department of the Interior (2005); U.S. Geological Survey, Photo by Jesse Armstrong

Final Workshop Report

November 18-20, 2014 - Kalispell, Montana

For all supporting materials, please see workshop website:
<http://crommmanagement.org/adaptive-management>

Funding generously provided by a grant from the Crown Roundtable/
Kreger Foundation through the Adaptive Management Initiative

Organized by:



Conservation Priorities

Native Salmonids in 2016

- **Pilot Project #1:**

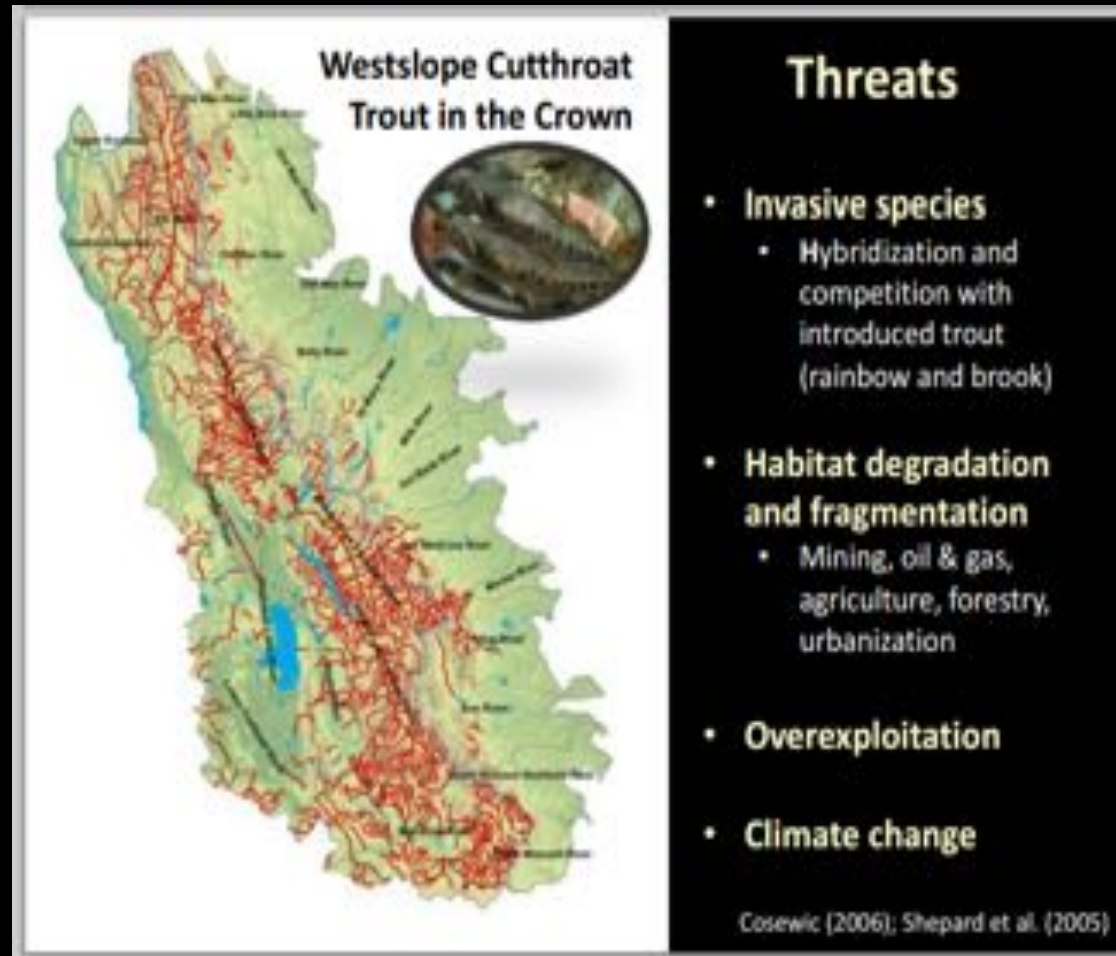
Replicate, restore and/or translocate native salmonid populations to cold water refugia in priority transboundary watersheds East of the Divide

- **Pilot Project #2:**

Export successful bull trout translocation efforts piloted in the North Fork of the Blackfoot to other landscapes.

- **Crown-wide Conservation Population Assessments:**

Complete identification and mapping of conservation populations and key watersheds most critical to sustain native salmonids across the Crown.



Preventing the Spread of Aquatic Invasive Species

Prevention, Containment, Education, Perimeter Defense



Preventing the Spread of Aquatic Invasive Species

AIS in 2016



- Finalize the Crown-wide Aquatic Invasive Species Transboundary Management Protocol
- Complete, disseminate and apply AIS focus group polling on effective messaging
- Work with sub-regional and regional partners

Terrestrial Invasive Plants

*2015 Annual Forum: Climate
People and Terrestrial Invasive
Plants: Taking Action in the
Crown of the Continent*



Priority Action Themes

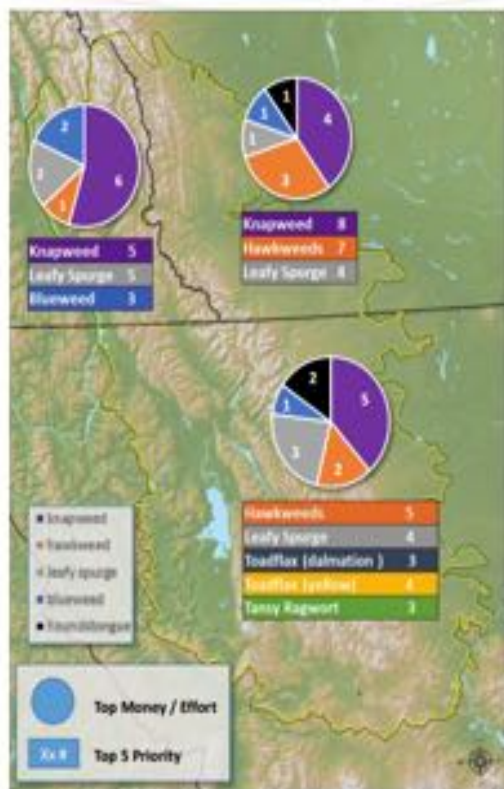
- 1. Survey and Monitoring**
- 2. Prioritization of hot spots for action**
- 3. External communication**
- 4. Internal communication**
- 5. Common Management Approaches**
- 6. Vectors and Corridors**



Terrestrial Invasive Plants

Prevention, Early Detection and Rapid Response, Education

Survey



Species

Orange Hawkweed
 Yellow Hawkweed
 St. John's Wort
 Blueweed
 Spotted Knapweed
 Leafy Spurge
 Houndstongue
 Dalmatian Toadflax
 Common Toadflax
 Common Tansy

Models



Terrestrial Invasive Plants

Prevention, Early Detection and Rapid Response, Education

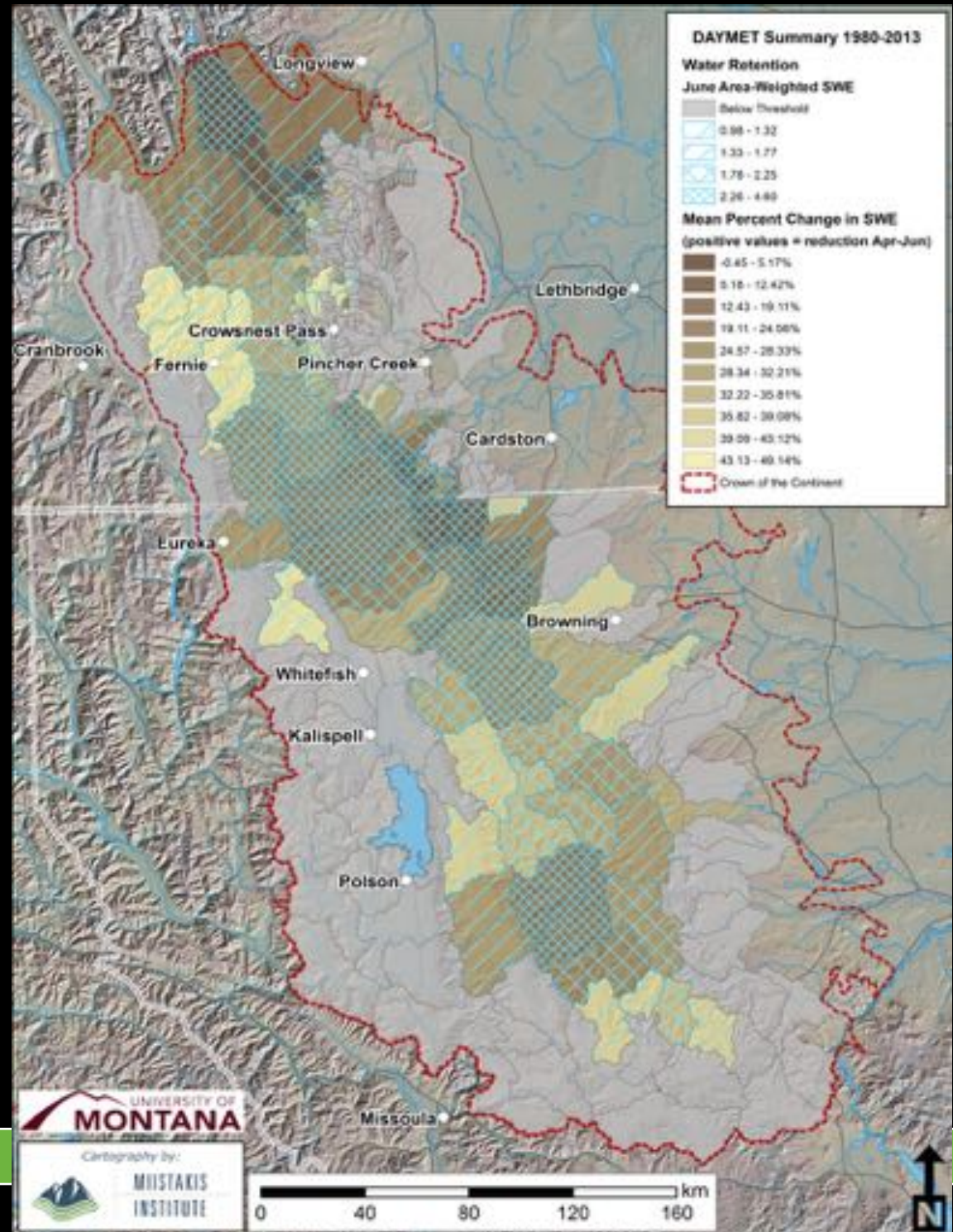
In 2016

- Complete climate change scenario mapping for suite of targeted species
- Coordinate development of a Crown-wide Terrestrial Invasive Plants committee (building on existing networks)
- Scope initial actions, and potential 2nd worksop



Climate change and water supply

- Analysis of Snow Water Equivalent –water retention by drainage basin
- In 2016 – Peer review and finalizing analysis
- Link to Conservation Priorities



2016 Annual Forum

Coordinating Action to Conserve 5-Needle Pine Forests in the Crown of the Continent



2016 Crown Managers Partnership Annual Forum
presents:

"We Need the Needles: Coordinating Action to Conserve
5-Needle Pine Forests in the Crown of the Continent"



Photo courtesy of NPS

When: March 15-17, 2016
Where: Fernie, British Columbia

