

Resources

Featured Programs 2

- * Kristi Yamaguchi’s Always Dream
- * Hawai‘i Department of Education,
Kailua-Kalaheo Complex
- * Hawai‘i Literacy
- * Maui Early Childhood Resource
Center/ Imagination Library
- * Reach Out and Read
- * Read To Me International
- * Words Matter LENA

National Partners 3

- * Kristi Yamaguchi, Always Dream
- * Ellen Galinsky, Bezos Family Foundation
- * Ralph Smith, Campaign for Grade-level Reading
- * Roberta Golinkoff, University of Delaware

Talk Story Partners 4-5

- * Aarika Riddle, Kristi Yamaguchi’s Always Dream
- * Chanel Campbell, Parent of a Child
with Unilateral Hearing Loss
- * Corrina “Rina” Moefu, Hawai‘i Literacy
- * Dr. Gina French, Hawai‘i Pacific Health Medical Group
- * Gwen Dufault, Family Hui Hawai‘i
- * Ka‘ina Bonacorsi, Maui Early
Childhood Resource Center
- * Kara Kusunoki, Read To Me International
- * Kathleen O’Dell, Hawai‘i Department of Education
- * Leialoha Synder, PATCH – People Attentive to Children



www.HawaiiActionStrategy.org

Kerrie Urosevich
Network Design and Innovation

kerrie@ecashawaii.org
(808) 381-9635

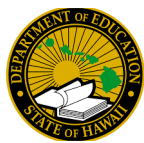


Kristi Yamaguchi's
ALWAYS DREAM

Always Dream

Founded in 1996, Kristi Yamaguchi's Always Dream supports children from low income families by providing them with access to high quality books, internet service, tablets and family engagement programs. The foundation supports communities across O'ahu specifically focused on pre-school and kindergarten students.
www.alwaysdream.org

Aarika Riddle
aarika@alwaysdream.org



Hawai'i DOE, Kailua-Kalaheo Complex

The Hawai'i Department of Education, Kailua-Kalaheo Complex has four school-based Family Resource Centers (FRCs) and partners with families and community organizations to provide a welcoming, accessible hub of resources and support based on the needs, interests and strengths of the families in those school communities. Strengthening quality family engagement in school is a proactive measure to increase student success through building family protective factors and increasing family leadership opportunities. Each Family Resource Center has a specific focus designed to reflect the families in the communities it serves.

Kathleen O'Dell, Ph.D
kathleen.o'dell@k12.hi.us



Hawai'i Literacy

Since its inception in 1971, Hawai'i Literacy has served people with low literacy skills, helping disadvantaged children prepare for and succeed in school and helping adults that need a second chance to learn how to read and write. The organization has four main programs: Adult Literacy, Bookmobile, English Language Learner and Family Literacy Libraries. Their services are currently available on O'ahu, Hawai'i Island, and Kaua'i to residents of all ages. They partner with Kristi Yamaguchi's Always Dream by providing local reading coaches to families with young children.
www.hawaiiliteracy.org

Corrina "Rina" Moefu
rina.moefu@hawaiiliteracy.org



Imagination Library / Maui Early Childhood Resource Center

Dolly Parton's Imagination Library is dedicated to inspiring a love of reading by gifting books free of charge to children from birth to age five years old, through funding supported by Dolly Parton and local community partners in the United States, Canada, United Kingdom, Australia and Republic of Ireland. Currently, Dolly Parton's Imagination Library program is available on the islands of Molokai, Lana'i and Maui through the Maui Early Childhood Resource Center.
imaginationlibrary.com

Ka'ina Bonacorsi
kaina.bonacorsi@mauicounty.gov



Reach Out and Read

Reach Out and Read provides trainings, resources, and support, and helps integrate reading into pediatric practices, advising families about the importance of reading with their children, and sharing books that serve as a catalyst for healthy childhood development. Reach Out and Read serves children in all 50 states across urban, suburban and rural communities. In Hawai'i, Dr. Gina French implements Reach Out and Read through Kapi'olani Medical Center for Women and Children, supporting keiki ages six months to five years old.
www.reachoutandread.org

Gina French, MD
gfrench@hawaii.edu



Read To Me International

Read To Me International promotes reading aloud to children through parent coaching programs at Hawai'i's schools, community sites and correctional facilities and through presentations and workshops for parents, educators and other interested groups. The organization provides support for parents of young children living in transitional and affordable housing. Their services are offered on O'ahu and their resources are available statewide, serving parents of keiki from birth to age nine years old.
www.readtomeintl.org

Kara Kusunoki
Kara@readtomeintl.org



Building brains through early talk

Words Matter LENA

Words Matter/LENA (Language Environment Analysis) is a local initiative that enhances early language development through positive serve and return activities between parents/caregivers and their keiki. Parents/caregivers engage in singing, storytelling, reading and conversation. The program uses LENA's early talk technology to count the number of words children hear and the number of serve and return sequences that happen between the parent/caregiver and their keiki. Currently, Words Matter/LENA is operating on O'ahu and Maui, serving keiki from birth to age five and their 'ohana through home visits, family-child interaction learning programs, head start/early head start, preschools and parent support groups.
www.lena.org

Gwen Dufault (O'ahu)
gwen@familyhuihawaii.org

Le'a Snyder (Maui)
lsnyder@patch-hi.org



Kristi Yamaguchi

Founder, Always Dream

Kristi Yamaguchi is a wife, mother, former U.S. figure skater and Olympic gold medalist. Kristi was born in Hayward, California and is a fourth-generation Japanese American. She was born with a foot deformity and her family encouraged her to ice skate to develop balance and coordination when she was six years old. In 1992, she won the gold medal in women's figure skating at the Winter Olympics in Albertville, France. Kristi went on to establish Always Dream in 1996, serving children from low-income families in addition to becoming an author and philanthropist.



Ellen Galinsky

Chief Science Officer, Bezos Family Foundation

Ellen Galinsky is the Chief Science Officer at the Bezos Family Foundation where she also holds several other positions including the executive director of Mind in the Making, the president of Families and Work Institute, as well as a best-selling author of books: "Mind in the Making: The Seven Essential Skills Every Child Needs" and "The Breakthrough Years." Throughout her career, Ellen has focused on identifying important societal questions, conducting research and turning her findings into action.



Roberta Golinkoff

Professor of Education, University of Delaware

Roberta is the Unidel H. Rodney Sharp Professor of Education at the University of Delaware. Her research has been funded by the National Science Foundation, the National Institutes of Health, the Institute of Education Sciences, and the LEGO Foundation. In addition to over 200 publications, she has authored 16 books and monographs. She also writes books for parents and practitioners: *How Babies Talk* (1999), the award-winning *Einstein Never Used Flash Cards* (2004), *A Mandate for Playful Learning in Preschool* (2009), and *Becoming Brilliant* (2016), that reached the New York Times best seller list in parenting and education. Her research is in the areas of language development, spatial thinking, playful learning and the effects of media on kids. She also holds joint appointments in the Departments of Psychological and Brain Sciences and Linguistics and Cognitive Science. Dr. Golinkoff is also founder and director of the Child's Play, Learning, and Development Lab. She also teaches human development and graduate classes on sharing the science with the public and on language development to aspiring teachers.



Ralph Smith

Managing Director, Campaign for Grade-level Reading

Ralph is the managing director of the Campaign for Grade-Level Reading. Previously, as Senior Vice President for the Annie E. Casey Foundation, Smith led the Making Connections initiative, a comprehensive effort to help communities improve outcomes for children by strengthening families and neighborhoods. Smith taught Corporations and Securities Law and Education Law and Policy as a member of the Law Faculty at the University of Pennsylvania for two decades, during which time he also served as Chief of Staff and Chief Operating Officer for the School District of Philadelphia. Smith is the founding director of both the National Center on Fathers and Families and the Philadelphia Children's Network, and a national leader of the Responsible Fatherhood movement.



Aarika Riddle

Executive Director, Always Dream
aarika@alwaysdream.org

Dedicating most of her career to working for youth-focused organizations, Aarika Riddle's current role is the Executive Director of Kristi Yamaguchi's Always Dream, which provides preschool and kindergarten students and their families with access to early literacy content, technology and support. Prior to joining Always Dream, she served as a Senior Executive Director for Reading Partners where she oversaw tier two literacy intervention programs at 45 elementary schools in the San Francisco Bay Area. Born and raised in Hawai'i, Aarika holds a bachelor's degree from California Lutheran University in sociology and communications with a concentration in public relations. A proud product of the public school system, Aarika is passionate about early literacy and educational equity.



Chanel Campbell

Parent of a Child with Unilateral Hearing Loss

Chanel Campbell is the proud mother of two boys. Her eldest son was born with a hearing impairment in one of his ears. Chanel dedicates her time to learning more about early childhood development to provide her child with as many opportunities as possible. She is involved with several organizations that support the deaf community including the CSC (Comprehensive Service Center) for people who are deaf, hard of hearing or deaf-blind, and is a member of the Newborn Hearing Screening Program Advisory Committee and a member of the Early Language Working Group.



Corrina "Rina" Moefu

Family Literacy Library Program Manager, Hawai'i Literacy
rina.moefu@hawaiiliteracy.org

Corrina "Rina" Moefu joined Hawai'i Literacy in 2015 as the Family Literacy Library Program manager where she oversees two family literacy libraries at The Towers at Kuhio Park and Mayor Wright Homes. She has over three decades of experience in social services and family strengthening programs and worked in various roles including direct services, program monitoring and evaluation, engagement and partnerships, and management. Prior to her role at Hawai'i Literacy, she worked and volunteered with Project Follow Through, Parent Child Center and Head Start. Thanks to her extensive experience in social services, Rina understands how important it is to be involved and present with children's early childhood education and activities. Although she has served on many community boards and councils and is a past appointee on the Governor's Advisory Council for the State of Hawai'i, her most rewarding accomplishment is being a parent, grandparent and great grandparent.



Gina French, MD

Associate Professor of Pediatrics, John A. Burns School of Medicine, University of Hawai'i, Hawai'i Pacific Health Medical Group
gfrench@hawaii.edu

Dr. Gina French is a developmental and behavioral pediatrician and is the medical director of the outpatient pediatric clinic at the Kapi'olani Medical Center for Women and Children. She studied and trained at the University of California, Irvine, Michigan State University in Grand Rapids and Ohio State University. She began her career at the Indian Health Service and spent most of her time working with families that have low financial resources. She is an ardent advocate of the importance of reading to children, especially those with reading problems, to make their experience seamless when reading and filling out complicated documents.



Gwen Dufault

Early Childhood Programs
Manager, Family Hui Hawai'i
gwen@familyhuihawaii.org

Gwen Dufault earned her M.Ed. degree in Early Childhood Education from the University of Hawai'i at Manoa. Her passion for working with young children sparked her career as an early childhood teacher. With over 16 years of teaching experience, she recognizes that the biggest influence on a child's learning and development are their families, regardless of the amount of time they spend in the classroom.

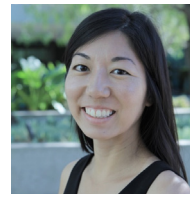


Ka'ina Bonacorsi

Resource Coordinator, Maui
Department of Housing &
Human Concerns

kaina.bonacorsi@mauicounty.gov

Ka'ina Bonacorsi has been the Maui County Early Childhood Resource Coordinator for 14 years. She has been involved with Early Childhood Action Strategy for about 10 years, and as the Team 4 facilitator for about 7 years. Ka'ina is active with ECAS' Team 6, along with the Literacy Coalition; Driving Literacy Initiatives Throughout Maui County.



Kara Kusunoki

Executive Director, Read To Me International
Kara@readtomeintl.org

Born and raised on Maui, Kara Kusunoki completed her undergraduate and graduate studies at the University of Hawai'i at Manoa. Prior to her role as executive director of Read to Me International, Kara began her career as a public school teacher. Teaching inspired her to support youth and their caregivers which is why she knows first-hand the importance of reading aloud, which stimulates children's emotional and academic development, providing them with different ways to see the world. She has worked in a variety of different settings from education through healthcare industries with a focus on nonprofit administration.



Kathleen O'Dell, Ph.D

Complex Academic Officer, Hawai'i Department of Education,
Kailua-Kalaheo Complex
kathleen.o'dell@k12.hi.us

Dr. Kathleen O'Dell is currently the academic officer for the Hawai'i Department of Education, Kailua-Kalaheo Complex. She holds a bachelor's degree in International Political Science from the University of Hawai'i at Hilo and an MAT and PhD in Multicultural and International Early Childhood Education from Kent State University, where she previously taught courses in preschool education, culturally responsive practices, and family and community engagement. She continues to teach in the Windward district focused on early childhood practices including topics on project approach, guidance vs. discipline and anti-bias education. At the Kailua-Kalaheo Complex, she started four school-based Family Resource Centers (FRCs) and spearheaded the collaboration of multiple state departments and community organizations to form a statewide steering committee to support schools and community-based Family Resource Centers in Hawai'i. She is currently the co-chair of the 'Ohana Support Network and is a member of the National Family Support Network Learning Hub committee.



Leialoha Snyder

Career Counselor, PATCH (People Attentive
to Children), Words Matter LENA
lsnyder@patch-hi.org

Leialoha Snyder is a dedicated mother of two children. She was born in Maui and has lived on O'ahu, Hawai'i Island and Japan. For over 14 years, she has been the career counselor at PATCH (People Attentive to Children) where she assists early childhood education professionals and family childcare providers with professional development, scholarships and resources. Leialoha also worked with Ka'ina Bonacorsi, the coordinator at the Maui County Early Childhood Resource Center to offer childcare providers and center directors' opportunities with LENA (Language Environment Analysis) and supports them with childcare business needs.