

ECAS All Network Meeting April 12, 2023 Guests



Olin Lagon

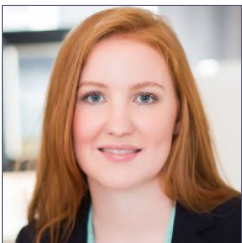
Olin Lagon is a serial social entrepreneur, innovator, and community organizer. He founded multiple companies and nonprofits in Hawaii and abroad. His most recent social venture is Shifted Energy, an energy company helping grid operators worldwide incorporate more renewable energy through systems deployed in underserved communities. He holds multiple patents and his designs have been used by millions of people and adopted by Global 1000 companies across four different industries. As one example, he invented and launched the first commercial crowdfunding service which scaled to channel \$100 million to fund causes worldwide. He has spoken at conferences worldwide including a keynote speaker at Microsoft's Annual Developer's Conference. His community service includes the U.S. Navy, the Peace Corps, and numerous nonprofits including an educational nonprofit he co-founded, Purple Mai'a. Most of Olin's community service has been in support of native Hawaiian initiatives with organizations such as the Council for Native Hawaiian Advancement and the Polynesian Voyaging Society. Olin lives in Kalihi Valley with his wife, two sons, and poi dog. On the weekends, he farms kalo at an 'ohana lo'i.



Karen Grattan

Karen Grattan is the Founder and CEO of Engaging Inquiry. As a senior consultant with over 25 years of experience, Karen is best known for her practice of accompanying impact-focused organizations as they endeavor to stimulate sustainable social and organizational change at scale. She is a weaver of methods and approaches, and especially loves designing novel analytics embedded within participatory organizational processes. Karen has supported various Non-Governmental and US Government clients in policy and strategy-making, including The Omidyar Group where she has been supporting the development of the systems practice being used by its initiative teams and board. Karen is co-author of the The Omidyar Group's Systems Practice workbook, which is also the centerpiece of a +Acumen course.

Karen and her team work primarily in global philanthropy, international development, urban planning, and public health. The types of challenges that partners bring to her include exposing racism in their systems, addressing inequity in health access and outcome, healing trauma and reweaving the social fabric after war, countering violent extremism, pollution, population growth, citizen engagement in "Smart" cities, informal economies and violence against women, and more! Prior to founding Engaging Inquiry, Karen consulted with US government clients in integrating qualitative systems and conflict analysis into quantitative modeling and simulation to support strategic-level resourcing decisions. She also spent 12 years designing, implementing and managing clinical and community-based research programs at Duke and Carolinas healthcare systems in North Carolina. Karen has degrees in public health, organizational learning and development, as well as conflict analysis and resolution.



Bailey Goldman

Bailey Goldman, MPH, brings 15 years of experience in the field of public health with the last five leading applied systems approaches to understand and engage the most pressing health challenges of our time. Operating at the intersection of research and practice, Bailey has cultivated skills for uplifting and aligning community assets to support the best health outcomes for all, with particular consideration to the most vulnerable members of a population. She has facilitated research and development initiatives in India, Indonesia, Vietnam, and Honduras, as well as within the United States. Her area of leadership and expertise is in participatory systemic learning methodologies, system mapping and strategy development techniques, and in the facilitation of adult learning and capacity development.

As the Principal for Community Health Systems at Engaging Inquiry, Bailey accompanies teams as they grapple with complex social and environmental factors that result in differing health outcomes within a population. She earned a Master's of Public Health from UNC-Chapel Hill's Gillings School of Global Public Health in Maternal and Child Health, with a global health focus. In addition, Bailey is a doula and a certified Centering Pregnancy facilitator, working to promote access to safe, respectful care for all birthing people and their families.