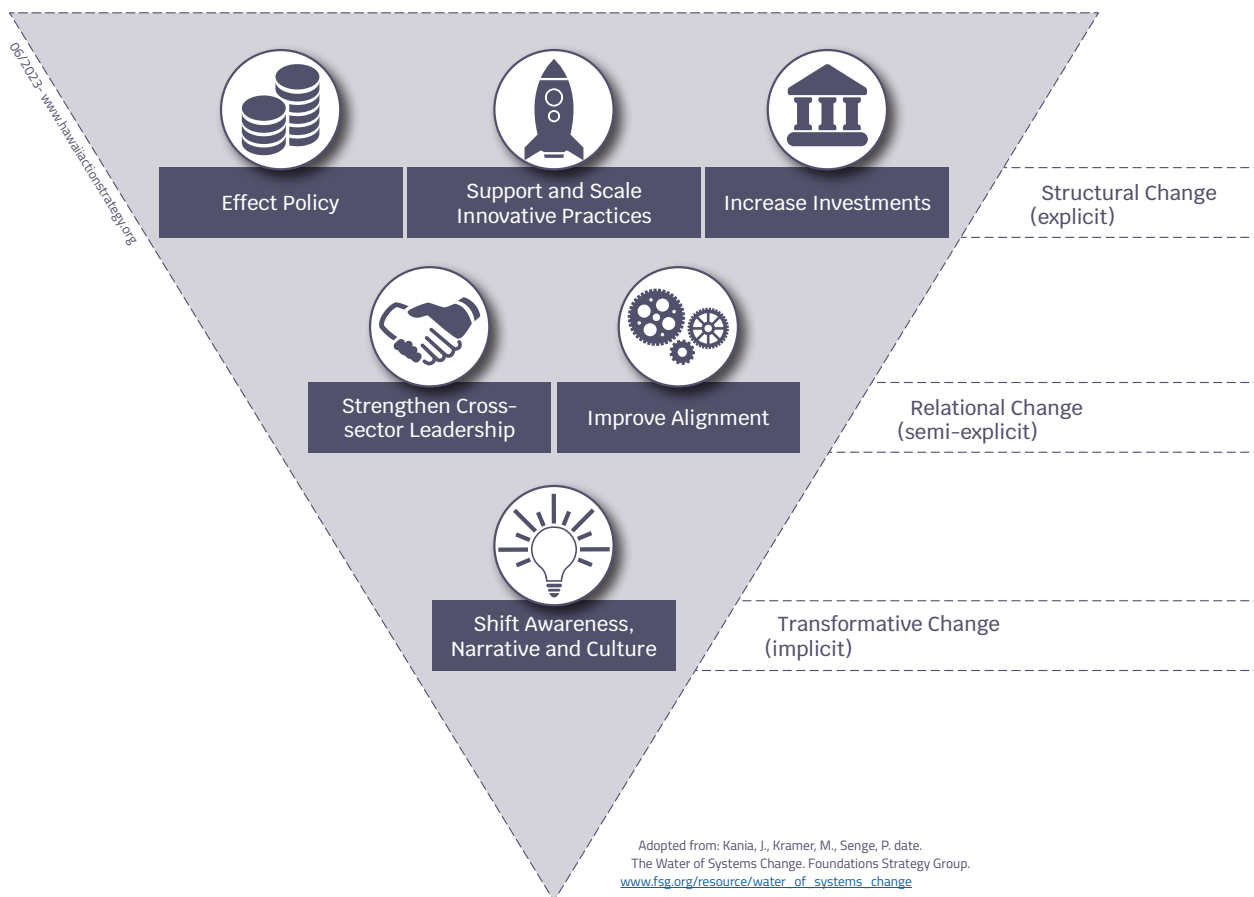


Early Childhood Action Strategy (ECAS) works to influence the core conditions that enable or impede Systems Change.

Six Conditions of Systems Change



Effect Policy

All efforts to make longterm improvements for our youngest keiki need to be supported by effective policy.

Strengthen Cross-sector Leadership

Convening diverse stakeholders to create a systems-level vision and champion systems-level strategies and priorities.

Support and Scale Innovative Practices

Adopting promising practices within our communities allows us to respond to immediate needs and address local conditions. Niche innovations create opportunities for learning. Systemic impact happens when innovations are scaled and sustained.

Improve Alignment

Alignment of the key resources within a system strengthens our ability to respond to the many challenges confronting the system of supports for early childhood.

Shift Awareness, Narrative, and Culture

Permanent change requires a fundamental reordering of societal priorities. Building a shared understanding among stakeholders and the public about needs, trends and a preferred future for Hawai'i is the foundation for sustained commitment and improvement.

Increase Investment

Establishing and coordinating sufficient and dependable funding mechanisms is a key to sustaining efforts.