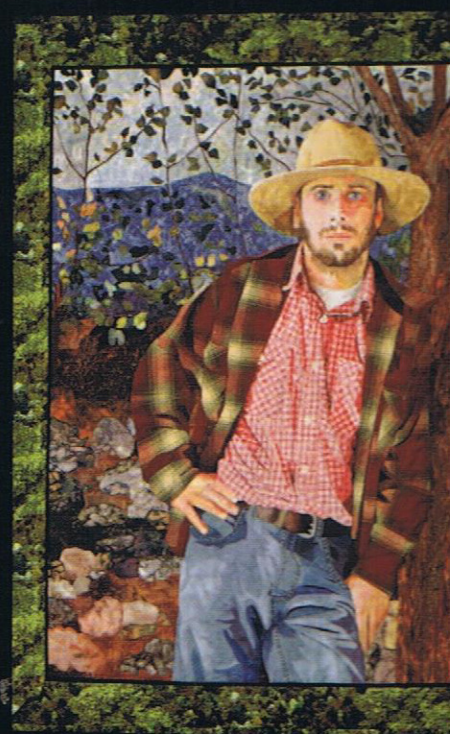


The Art Quilt Collection

Designs & Inspiration from Around the World | Foreword by Linda Sew

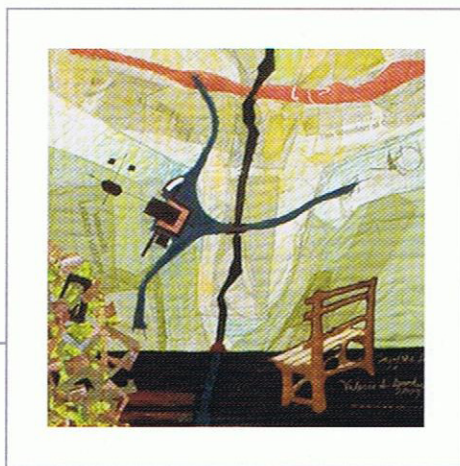




LAY OF THE LAND II

Cottons, sheers, paint, thread,
digitally printed images;
hand stitched and appliquéd, raw-edge
machine appliquéd, fused, painted;
94 x 51 inches (239 x 130 cm)

VALERIE S. GOODWIN R.A.
Tallahassee, Florida, USA



In this quilt, I use a technique known as composite drawing as a way of interweaving graphic elements such as aerial views, plans, sections and elevations in a cohesive and creative way. The composite drawing relates back to the Beaux Art Analytique where several types of drawings related to an architectural project are carefully composed on one sheet.