

ONWARDS AS ONE



Zambezi
**ELEPHANT
FUND**

CONTENTS

01

Introduction

02

Pathfinders for protection

04

Elephants mean the world to us

05

Where we work

06

Highlights and achievements

10

Catalysts for change

12

Innovations that reach further

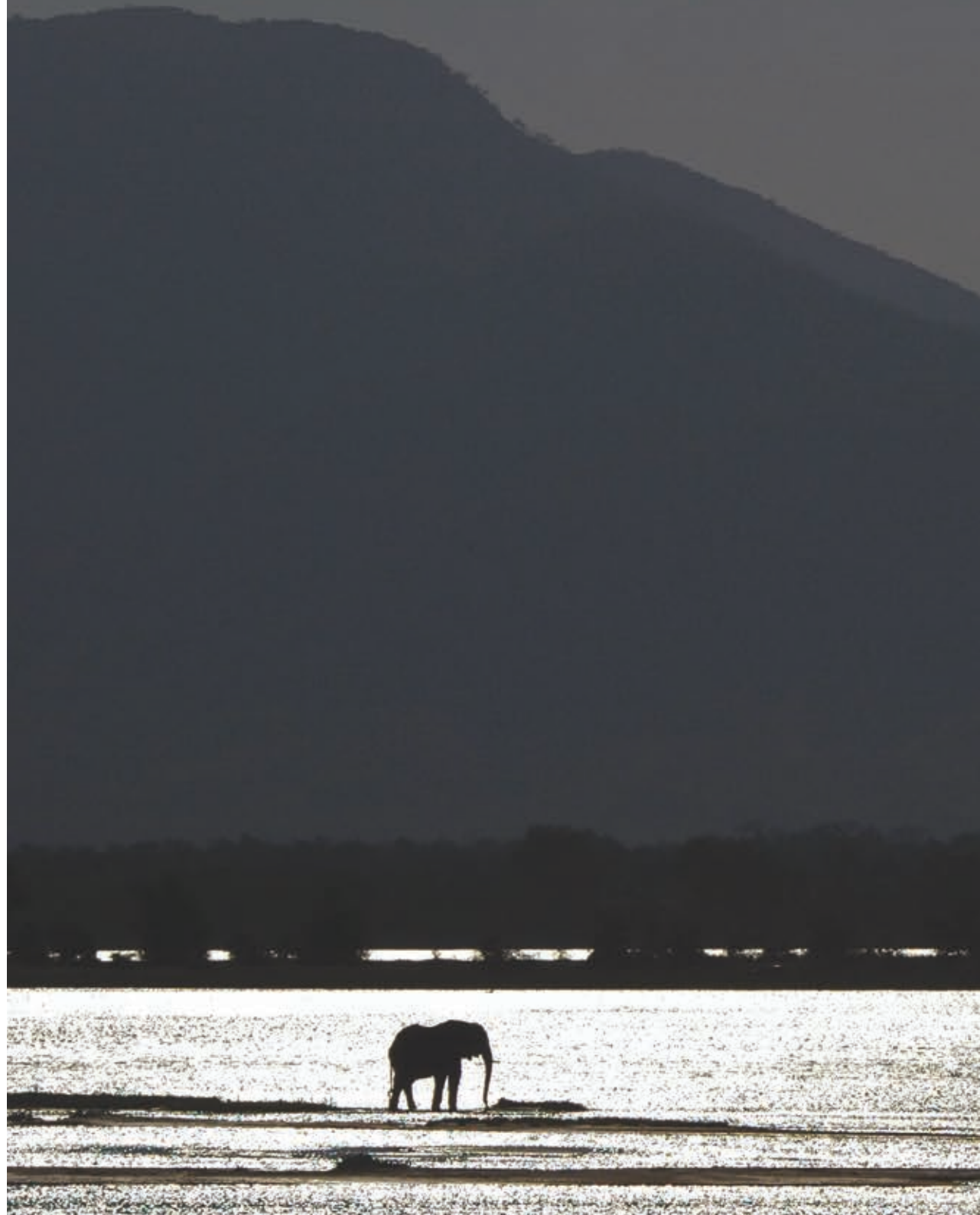
14

The future

16

ZEF'S impact and innovations

How you can help





INTRODUCTION

One of Africa's finest remaining wild places is also considered the "heart" of elephant territory in the region. Mana Pools, the centre of Zambezi Elephant Fund's operations in Zimbabwe's Zambezi Valley, is a veritable paradise – remote, achingly beautiful and revered by those whose perspective on life is undeniably changed by a visit here.

Seeing the world's largest land mammal roam free in this unique landscape is a poignant reminder of how privileged we are to protect these magnificent creatures and their habitats.

Join us, as we take you on a path through time that is as interesting as those intricate trails created by elephants; after six years, Zambezi Elephant Fund's journey is shaping and opening up the Zambezi Valley conservation landscape, and providing important resources for our conservation partners who are dedicated to wildlife protection...

PATHFINDERS FOR PROTECTION

OUR VISION

is that the Zambezi Valley, in its magnificent entirety, will always be a safe environment where elephants and other wildlife can thrive, for the benefit of Zimbabwe, its people and global biodiversity.

OUR MISSION

is to work collaboratively with the Zimbabwe Parks and Wildlife Management Authority, Conservation Support Organisations (CSOs) and the private sector to develop, implement and manage: anti-poaching operations, field equipment and supplies for rangers and support teams, anti-poaching ranger training, conservation security planning and implementation, information systems and networking, technology and systems for anti-poaching operations, community livelihood programs, habitat restoration initiatives, and education and awareness delivery.

*‘The oldest roads in Africa are elephant trails,
but how much longer will their feet forge these dusty paths?’*





ELEPHANTS MEAN THE WORLD TO US



When we first thought about creating the Zambezi Elephant Fund, the rise in elephant poaching in the Zambezi Valley was undeniably alarming. Now, six years on, and with the poaching crisis contained, we find the focus of conservation in the valley has shifted.

In the midst of a pandemic, ZEF's mission is informed, not just by the threats to wildlife and their habitats, but by people's lives, too... the rangers on the ground, the rural communities who live alongside wildlife, and our partner conservationists – who, despite recent global events, are continuing to make positive, long-lasting and tangible impacts.

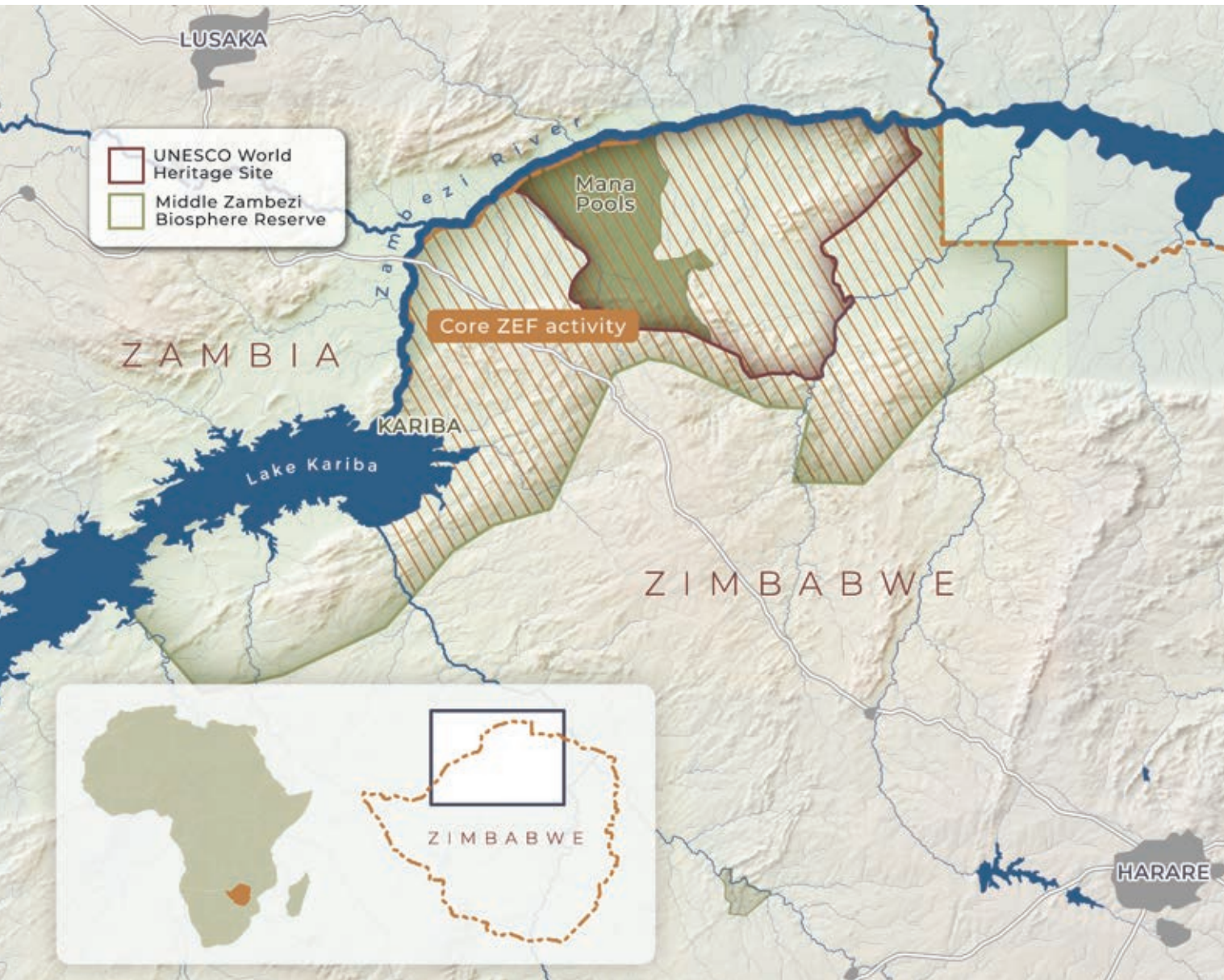
The following pages represent hope, positive change and a defiance against all odds. They are about finding the gaps, meeting the needs, crushing the threats, exploring ideas to tackle new and emerging problems and transforming these ideas into action.

As elephants show us, no matter how difficult things may be, we are on the right path when we're on it together. As a diverse and highly effective group, we will continue protecting our beautiful valley and ensuring a sustainable future for everyone.

Through you, our committed friends and supporters, we are enabled to champion each of these objectives and increase our reach valley-wide.

Thank you.

Nicci and John Stevens



WHERE WE WORK

- 4th longest river in Africa
- 240km of contiguous riverine landscape
- Middle Zambezi Biosphere Reserve
- Nearly 5,000,000 acres of diverse landscape
- The 438,000 acre Mana Pools National Park component is a UNESCO World Heritage Site
- Home to a wide range of mammals and over 350 bird species
- Home to threatened species such as the elephant, wild dog, pangolin, lion, cheetah and leopard

TIMELINE OF HIGHLIGHTS AND ACHIEVEMENTS

2015

Nicci and John Stevens and Richard Maasdorp, along with others, create Zambezi Elephant Fund (ZEF) as a response to a crisis of elephant poaching in the Zambezi Valley

ZEF draws its mandate from the Zambezi Valley Elephant Management Stakeholder Workshop

Strong associations established with Global Wildlife Conservation (GWC), and ongoing co-funding of implementing partners who have the support of Elephant Crisis Fund through Wildlife Conservation Network

Partnered with Matusadona Anti-Poaching Project (MAPP) – fish and bush meat poaching arrests, plus started investigations initiative through The Zambezi Society

First USA Fundraising Roadshow

ZEF provides two anti-poaching Land Cruisers with drivers on the ground, 3,000 km a month, dedicated to the deployment and uplift of ranger patrols

2017

Construction of a strategically-located anti-poaching rangers rapid response base, ZAVARU, together with The Tashinga Initiative

Specialised weapons training courses for rangers begin under ZamSoc instruction

Opening up and improving anti-poaching non-tourist access roads in the Matusadona and Mana Pools National Parks

Through ZamSoc, co-funding of the first Savannah light-sport aircraft for aerial surveillance and monitoring of wildlife

2016

2018

Number of elephants known to have been poached in the Zambezi Valley decreased – from 72 in 2016 to 18 in 2018

Second vehicle and Zambezi River border patrol boat with coxswain, based at Mana Pools with capacity to deploy eight rangers

Saving the Elephants Run, Central Park, New York and inaugural Mukuvisi March, Harare, Zimbabwe. Over 1,100 participants

The establishment of a collaborative Illegal Wildlife Crime (IWC) intelligence initiative with International Anti-Poaching Foundation (IAPF)

Saving the Elephants Run repeated

Support for a disadvantaged children's programme (together with Portia Chundu), clinic, school, etc.

Strategically placed wet season fly camps with transport with Bushlife Support Unit

Co-funded second Savannah aircraft, plus ongoing operational costs

Zambezi Society's Charara Wildlife Recovery Project, supported by Lion Recovery Fund, begins, with targeted anti-poaching and infrastructure development a key link between the KAZA (Kavango-Zambezi Transfrontier Conservation Area) and Lower Zambezi elephant ranges

2019

2020

Collaboration with My Trees Trust begins, developing the largest indigenous tree planting program in the sub-Saharan region

Supporting Dande Anti-Poaching Unit (DAPU) in time of COVID distress

Support with rations for 200 rangers and their families in time of COVID distress

Supporting Bushlife Support Unit with anti-poaching operations

Ongoing support for IWC, boats, vehicles, rangers, deployments, etc.

Development of REDD+ and fuel efficient cookstove programs with My Trees Trust

My Trees and Zambezi Society, securing of long term leases and co-management of large concession areas in need of rehabilitation

2021



CATALYSTS FOR CHANGE

Our shared love of elephants and the vast, beautiful valley where they live demands global participation in all efforts to protect them. Zambezi Elephant Fund is proud to work with like-minded, proactive conservation leaders and over the years has supported:

THE ZAMBEZI SOCIETY

The Zambezi Society (ZamSoc) is a conservation group working closely with local and international organisations, government authorities and with local communities. ZamSoc is committed to initiating rapid, well-informed, and effective action to:

- Maintain the Zambezi Valley's biodiversity
- Conserve Zambezi wildernesses and promote the recognition of their values
- Ensure that conservation is incorporated into planning for the whole Zambezi Valley landscape
- Encourage people to find ways of using the natural resources of the Zambezi Valley without destroying them

BUSHLIFE SUPPORT UNIT

In 2015 the Bushlife Support Unit was set up, uniting the Zambezi Valley community together in a consolidated effort to stop poaching in the area.

The Bushlife Support Unit is a "boots-on-the-ground" team and anti-poaching patrols are deployed daily in vehicles and boats. Countless arrests have been made, subsequently saving the lives of animals in Mana Pools National Park.

THE TASHINGA INITIATIVE

The Tashinga Initiative (TTI) raises funds for wildlife protection from the global community, implements results-based projects informed by planning and budgets, with the expectation that each intervention is one step closer to the return of biodiversity to the area concerned.

MATUSADONNA ANTI POACHING PROJECT

The Matusadona Anti-Poaching Project (MAPP) is a joint initiative with the Zimbabwe Parks and Wildlife Management Authority (ZPWMA), conservation organisations and tour operators, aimed at protecting fish and wildlife resources in and around the Matusadona National Park.

The need for Matusadona operations is now met by African Parks.

FLYING FOR WILDLIFE

Flying For Wildlife Trust provides aerial assistance and support to ZPWMA and other stakeholders in their anti-poaching and conservation efforts.

ZAMBEZI VALLEY CONSERVATION NETWORK

A community of conservationists, environmentalists, indigenous communities, activists, civil groups, local authorities, businesses and corporate organisations who are committed to preserving and raising awareness of the beauty and ecological importance of the Zambezi Valley landscape. The common goal is the maintenance of this extraordinary natural resource whilst reconciling the needs of those within surrounding rural communities. The Zambezi Valley Conservation Network was launched in 2020 and aims to provide conservation efficiencies whilst leading targeted collaborative responses to major threats to the landscape.

DANDE ANTI POACHING UNIT

In 2010 the Dande Safari Area, in northern Zimbabwe, suddenly saw a marked increase in elephant poaching. DAPU provides support and assistance to ZPWMA, as well as running its own community based unit.

KARIBA ANIMAL WELFARE FUND TRUST

KAWFT was formed in 2010 by three passionate Kariba residents, for the purpose of raising funds and awareness on treating and helping injured or distressed wildlife in the Kariba area. In conjunction with ZPWMA, KAWFT began anti-snaring patrols in mid 2011 to combat the ever increasing numbers of animals reported to be carrying snares.

MY TREES TRUST

The My Trees Trust is developing the largest community-driven indigenous tree planting initiative in the region. My Trees aim is to help reduce the rate of natural forest loss in rural Zimbabwe, through: planting indigenous trees restoring, and protecting natural woodland and by providing alternative sources of income and sustainable fuels to affected communities.

WILDLIFE CRIME UNIT

Combating illegal wildlife crime syndicates throughout Zimbabwe.



*Mana's floodplain extends 35 kilometres along the Zambezi River,
just a small part of the incredible valley in which Zambezi
Elephant Fund's conservation partners operate.*



INNOVATIONS THAT REACH FURTHER

Non-linear thinking, questioning the status quo, a different perspective – these are the agents that motivate the positive changes required to protect biodiversity across a valley-wide landscape.

“With anti-poaching operations delivering a reduction in ivory trade, the challenge of our time has shifted to the preservation of the habitats that sustain elephants and other wildlife.” James Egremont-Lee





Our wilderness is now under severe threat from agriculture and illegal mining alongside a stark loss of biodiversity from increased bushmeat poaching.

ZEF'S focus is therefore to maintain the integrity of the 5 million acres of contiguous Zambezi wilderness that make up our landscape, with investments in activity that prevent further loss of habitat and develop models of sustainability, both ecological and economic.



THE FUTURE

In an age where biodiversity loss has spiked beyond anything seen before, it is the challenge of our time to restore what has vanished and protect what is vulnerable.

ZEF contributes to tailored interventions to tackle the specific problems the Zambezi Valley faces and zooms into the detail of a geography in dire need of help.

The suite of activity that ZEF helps to make happen offers targeted solutions to the most pressing environmental issues in the region and deep within our ambition is a burning belief that we can play a huge role in turning the tide of biodiversity loss.

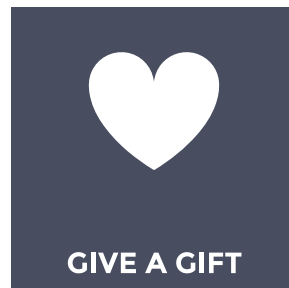
If we are to achieve further success, we will need the guidance, support and backing of a range of expertise and targeted resources, from our international friends and global agencies to local communities. We are determined to see ZEF continue to add value to this unique landscape, and it has been the extraordinary generosity of so many of our supporters that has made it all possible.



ZEF'S IMPACT AND INNOVATIONS

- Supporting anti-poaching operations and targeted training throughout 1.6 million acres of the Zambezi Valley landscape
- Combating illegal wildlife crime syndicates
- Developing the largest community-driven indigenous tree planting initiative in the region
- Securing over 250,000 acres of Zambezi Valley habitat under new long term rehabilitation management
- Providing rangers and their families with nutrition, health and welfare
- Continuing sophisticated aerial monitoring and surveillance
- Leading strategic solutions that tackle serious threats to biodiversity (e.g. bushmeat poaching and illegal mining activities)

HOW YOU CAN HELP







Zambezi Elephant Fund thanks the following for the use of their beautiful images:
Andy Lowe, Graham Cochrane, Deb Primrose, Chris and Monique Fallows, Steven Chikosi, Michelle Morgan, Marlon du Toit.

We are also grateful to our partners:

