



WAITSBURG PLANNING COMMISSION
REGULAR MEETING
October 10, 2025 10 A.M
Waitsburg City Hall – 106 Main Street
Zoom: <https://us06web.zoom.us/j/9667145189>
Meeting ID: 966 714 5189

AGENDA

I. Meeting Call to Order

Chairman

II. Approval of Minutes

- a. August 08, 2025 Regular Meeting

Discussion

Action

III. Public Comment

IV. New Business

- a. Multi-family housing unit
b. 2026 Comprehensive Plan Update - Maps

Discussion

Discussion

V. Unfinished Business

VI. Adjournment of Meeting

Waitsburg Planning Commission – August 8, 2025, Regular Meeting

Planning Commission Chairperson called the meeting to order at 10:00am

Roll Call

The following were present: Karen Gregutt, Becky Huwe, Matt Bertucci, Tricia Knee & City Council Liaison Jillian Henze

Approval of Minutes

With no changes to the June 13, 2025 regular meeting minutes, they were approved and passed unanimously.

Public Comment

New Business

a. Palouse Valley Community Center

Jennifer Beckmeyer was present to present the plan for the Community Center in regard to having an onsite day care. Due to the zoning restrictions a conditional use permit is required for this activity. Commission asked questions and discussed the application. With no more discussion, Commission member Knee moved to approve with Commission member Bertucci seconding. Motion to approve the application was approved and passed unanimously.

b. Comprehensive Plan Transportation and Capital Facilities Elements Review

Commission reviewed the recommended changes to the Transportation and Capital Facilities Element of the Comprehensive Plan. Group planned to meet again in October to continue their review of the two elements.

d. Development Code Update

Commission reviewed the next set of chapters of the City's Development Code.

Adjournment of Meeting

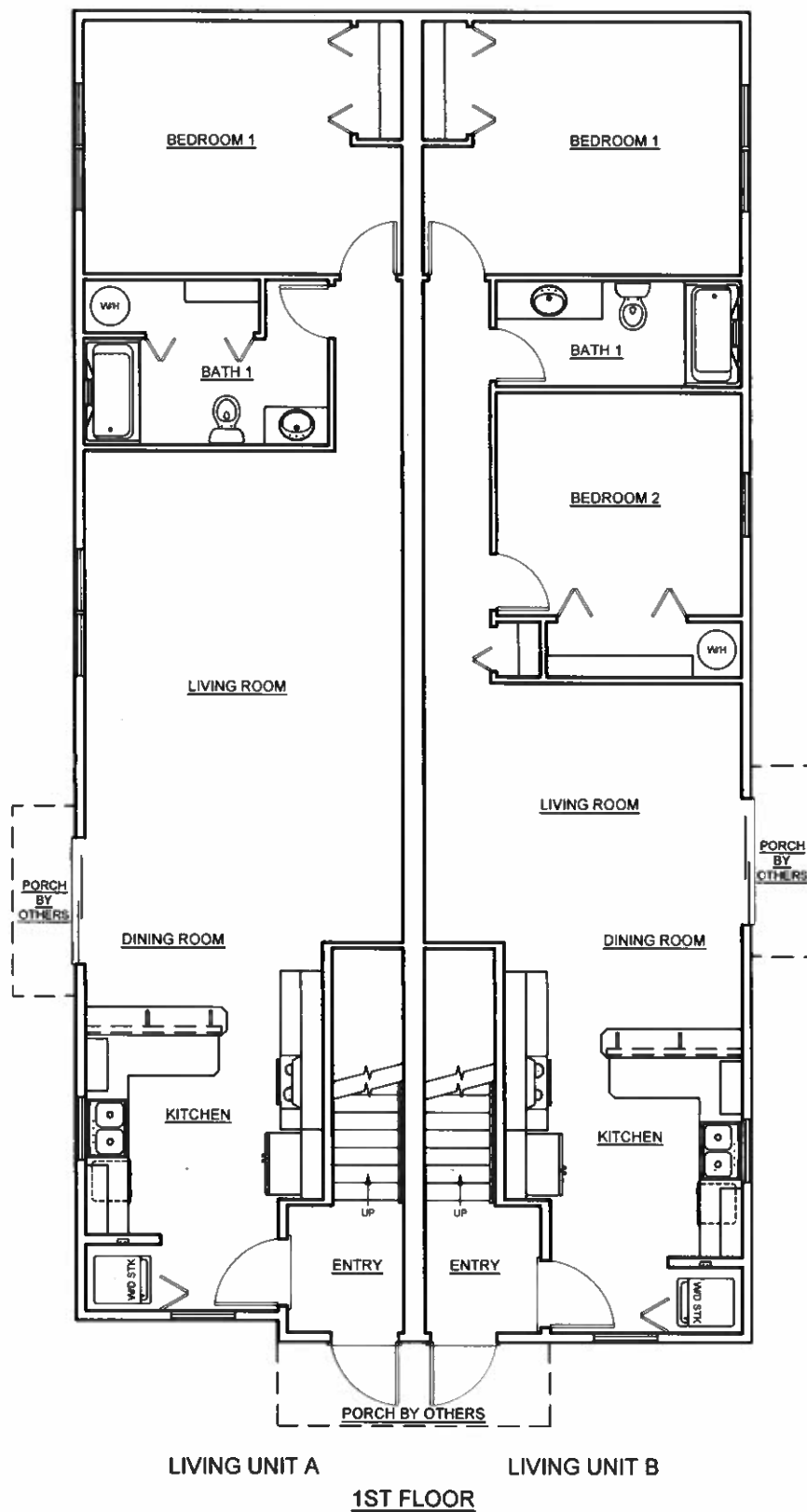
There being no further business, the meeting was adjourned at 11:10 am.

Approved

Attest:

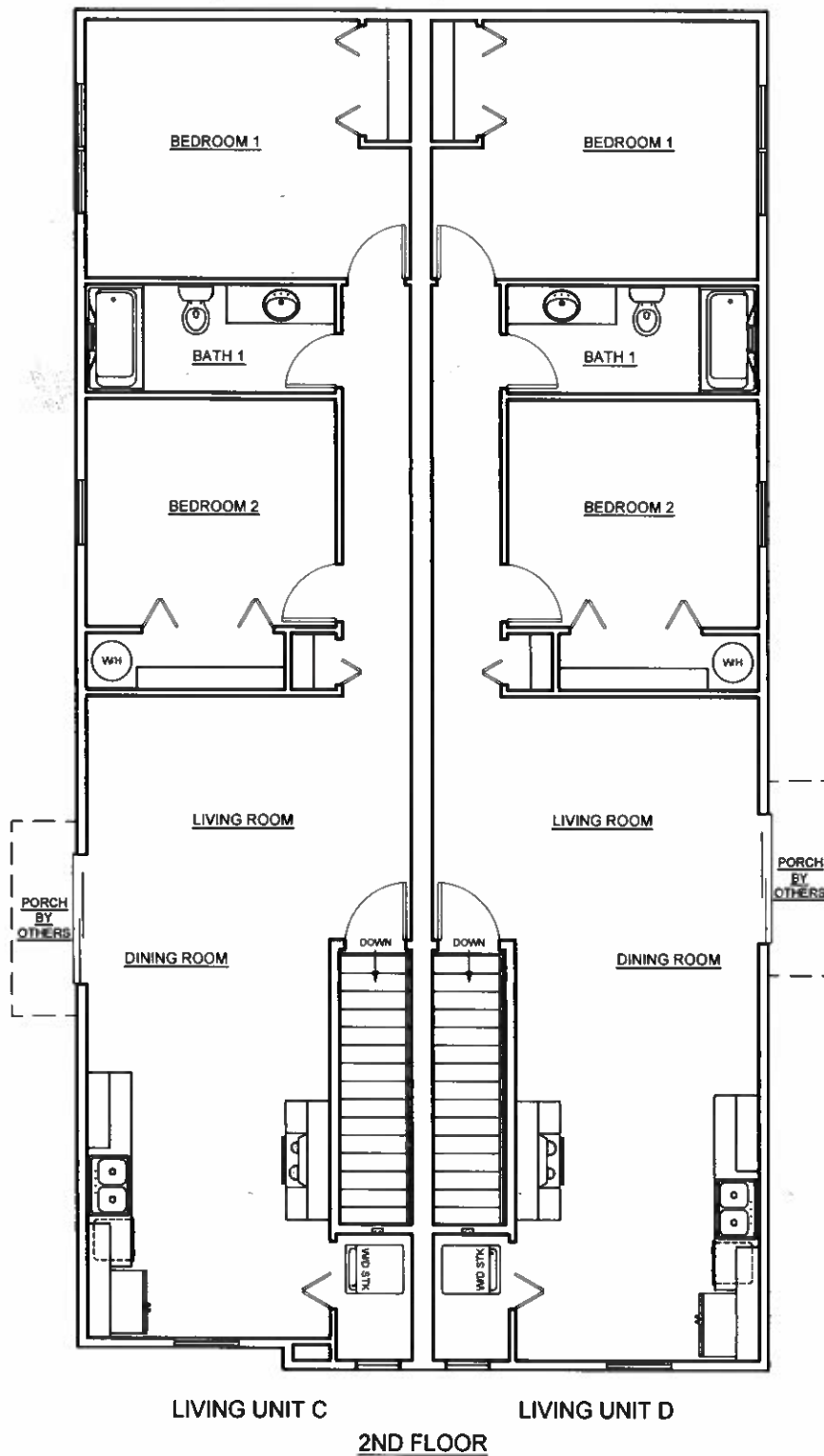
Chairman

City Clerk



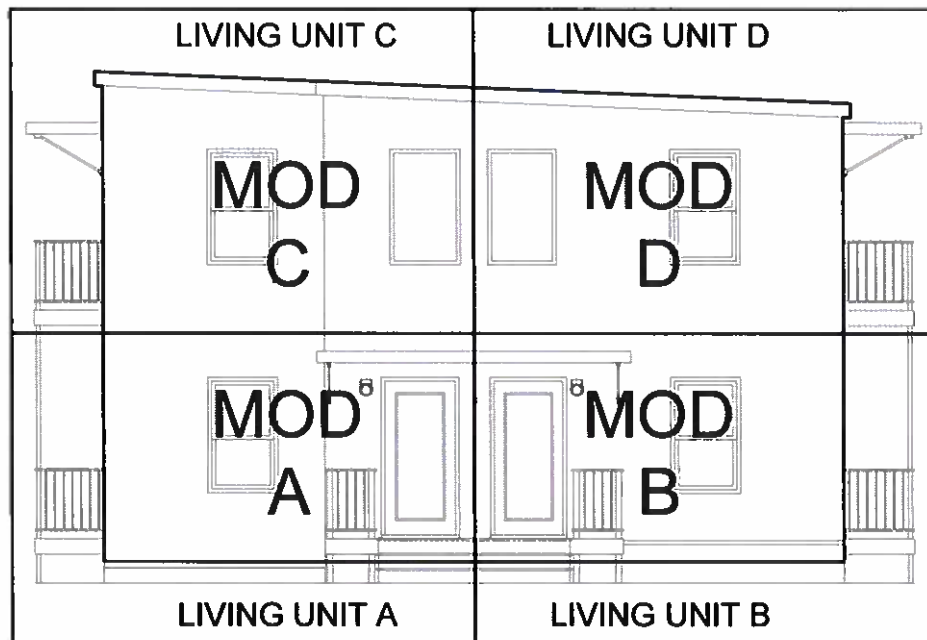
ARROWHEAD

4-Plex Apartment Dimensions:
Mod Length: 63'-0"
Width: 32'-0"
All porches are by others, sizes vary.



ARROWHEAD

4-Plex Apartment Dimensions:
 Mod Length: 63'-0"
 Width: 32'-0"
 All porches are by others, sizes vary.



ARROWHEAD



Freeman's Apartment
Complex



EG

