



State of Oregon
Real Estate Agency

530 Center Street NE, Suite 100
Salem, OR 97301-2505

Condominium Presale Disclosure Statement

CULLY GREEN CONDOMINIUM
(A PROPOSED OREGON CONDOMINIUM)
FILE NO. **CO-26-0519-1322**

ADOPTED AND ISSUED BY THE COMMISSIONER ON: **AUGUST 6, 2019**

NAME AND ADDRESS OF DECLARANT:

CULLY GREEN LLC
4751 NE GOING ST.
PORTLAND OR 7218

PURCHASERS: READ THIS NOTICE CAREFULLY

UNIT SALES AGREEMENT REQUIRED FOR SALE OF UNIT

The sale of a unit by the Declarant (seller) requires the Declarant to use a Unit Sales Agreement, which is a special sales agreement prepared by the Declarant that is unique to this condominium. The Real Estate Agency has reviewed and approved the Unit Sales Agreement for compliance with Oregon condominium laws. The Unit Sales Agreement contains special information that is not found in standard real estate sales agreements, including warranty provisions required under ORS 100.185, and a notice to the purchaser of the right to cancel, for any reason, the sale of a condominium unit from a Declarant within five business days under ORS 100.730.

Before the unit sales agreement is fully executed by all parties, the developer is required to deliver to the purchaser a copy of the declaration and bylaws of the condominium and any supplements and amendments to these documents.

PURCHASER MUST BE GIVEN THIS DISCLOSURE STATEMENT

The Declarant must give each purchaser this disclosure statement not later than the date the unit sales agreement is fully executed by all parties. The purchaser must sign a receipt for the disclosure statement. The Declarant has filed this condominium with the Oregon Real Estate Commissioner as required under ORS chapter 100. The fact that the Commissioner issued this disclosure statement does not constitute a recommendation or endorsement of the condominium by the Commissioner. The Real Estate Agency has not physically inspected the condominium. The information in this disclosure statement was prepared by and is a representation of the Declarant. READ THE DISCLOSURE STATEMENT CAREFULLY.

The operation and management of the condominium association of unit owners is not regulated by the Commissioner. This disclosure statement does not relieve any person from the responsibility of complying with the requirements of any municipal, county, state or federal agency that has jurisdiction over the condominium.

PRESALE DISCLOSURE STATEMENT INFORMATION

A condominium is a special form of property ownership, which is created and governed in Oregon by statutes known as the Oregon Condominium Act, (ORS 100.005 to 100.910 and 100.990).

No condominium exists until the Declaration of Unit Ownership is recorded at the recorder's office within the county in which the property is located. A Plat of the property as well as a copy of the Bylaws must be recorded simultaneously with the Declaration.

Special provisions in the Oregon law allow for the execution of binding Sales Agreements for Units in a condominium prior to their legal creation if a Presale Disclosure Statement has been adopted and issued by the Real Estate Commissioner.

A Presale Disclosure Statement is only issued when the declarant has complied with specific escrow arrangements required by law for presales of units. These escrow provisions provide that purchaser's funds are to be held in escrow until the Declaration has been recorded and the interest bargained for by the purchaser has been conveyed. You should review the terms of the Escrow Instructions to fully understand your rights in a presale transaction.

NOTE: All references in this Disclosure Statement to the condominium and its Declaration, Plat and Bylaws should be understood to be prefaced by the term "proposed" until such time as the required recordation of documents takes place and this Disclosure Statement is revised to reflect that recordation.

CONDOMINIUM DISCLOSURE STATEMENT FOR CULLY GREEN CONDOMINIUM

Name and Address of Condominium and Developer

This Disclosure Statement discloses certain pertinent information about Cully Green Condominium (the "**Condominium**"), a proposed condominium to be located at 4744 - 4798 NE Going St. and 4540 - 4584 NE 47th Ave. in the City of Portland, Multnomah County, Oregon. This Disclosure Statement has been prepared by Cully Green LLC, an Oregon limited liability company (the "**Developer**"). Developer's telephone number is (503) 422-2607 and its address is 4751 NE Going St. Portland, Oregon 97218.

Developer has prepared a proposed Declaration and Bylaws of the Cully Green Condominium Owners' Association (the "**Association**"). The proposed Declaration submitting the Condominium to condominium ownership is referred to in this Disclosure Statement as the "**Declaration**," and the proposed Bylaws of the Association is referred to in this Disclosure Statement as the "**Bylaws**." All capitalized terms used in this Disclosure Statement have the meanings given to them in Section 1.1 of the Declaration.

General Description of Condominium

The proposed Condominium is anticipated to consist of 23 Living Units in 10 residential buildings ("**Residence Buildings**") and 20 Parking Units, each of which is an uncovered surface parking space. One of the Parking Units is designated as an accessible parking space (the "**Accessible Parking Unit**"). If the buyer of the Accessible Parking Unit or an occupant of the buyer's Living Unit does not have a state-issued disabled parking permit at the time of closing, the deed to the Accessible Parking Unit will include a covenant to obligate the owner of the Accessible Parking Unit to transfer use of the unit to another resident who requires such an accessible space and possesses a state-issued disabled parking permit in return for the owner's use of the other occupant's Parking Unit.

The Living Units will consist of 12 new 3- or 4-bedroom units that range in size from approximately 1,393 square feet to 1,574 square feet, 10 new 2-bedroom units that range in size from approximately 992 square feet to 1,085 square feet, and one existing 4-bedroom unit of approximately 1,700 square feet (the "**Existing House**"). Living Units 1 through 15 and 17 through 23 are configured as side-by-side units in triplex and four-plex buildings. Living Unit 16 will be located in an existing stand-alone building that was built in approximately 1947. Living Units 1 through 15 and 17 through 23 are configured as two story side-by-side townhomes in duplex or triplex buildings, without basements. Unit 16 is the Existing House, which is a detached two story structure with a basement. A copy of the plans for each Living Unit type is attached at Exhibit A. Abutting each Living Unit is a Limited Common Element private yard for the owner of that Living Unit.

The Condominium will include General Common Elements anticipated to consist of the following:

- A common house with gathering space, kitchen, washer/dryer sets, two full baths, guest bedrooms, and outdoor patio (the “Common House”).
- Bike storage building.
- Driveways, pedestrian walkways, and landscape areas.
- Entry arbor centered on the central pedestrian path where it meets the public right-of-way at NE Going St.

The new buildings will be constructed utilizing poured in place concrete foundations with wood framed walls and floors above. The new Residence Buildings, and the Common House will have cement board siding over rain screen over structural wood panels (plywood or OSB) and composition roofs of asphaltic composition shingles.

Nature of Interest Offered in Condominium

Developer is offering a fee simple ownership interest in a Living Unit and (optional) Parking Unit, as described in Section 4 of the Declaration, to prospective purchasers. Ownership of Parking Units will be restricted to Living Unit owners, the Association or the Developer.

The owner of a Living Unit and Parking Unit will also receive an undivided interest, in common with other unit owners, in the Common Elements of the Condominium, including the General Common Elements described in Section 5 of the Declaration. Each Owner of a Parking Unit shall be entitled to an undivided 0.200 percentage ownership interest in the Common Elements of the Condominium, as set forth in the Declaration. The remaining 96 percent ownership interest in the Common Elements shall be allocated among the Living Units as follows: each Living Unit Owner shall be entitled to an undivided percentage ownership interest in the Common Elements of the Condominium determined by the ratio of the living area square footage of all floors of each Living Unit (excluding attics or crawl spaces) to the total living area square footage of all floors of all of the Living Unit combined (exclusive of any attics or crawl spaces). See Section 7 of the Declaration.

In addition, each Living Unit owner will also receive the exclusive right to use those Limited Common Elements that pertain to his or her unit. Limited Common Elements will include yard areas abutting each Living Unit. Limited Common Elements are further described in Section 6 of the proposed Declaration.

The General Common Elements include the areas described above and are further described in Section 5 of the proposed Declaration.

Development and Ownership

Developer is the owner of the property upon which the Condominium is being developed, and is engaged in developing the Condominium.

Status of Construction

Developer anticipates completion of the renovation of Living Unit 16 and the construction of the new units and common elements of the Condominium in December,

2020. This date is a projection and is subject to revision. Developer can give no assurance that construction will be completed by this date.

Developer has reserved the right in the unit sales agreements to elect not to proceed with the project in the event Developer fails to obtain signed sale agreements for 25% of the 23 Living Units within 180 days after the first unit sales agreement is fully executed. If Developer fails to meet the required percentage and opts not to proceed with the condominium, Developer will terminate each then-existing unit sales agreement and return any earnest money to the buyers.

Financing

Purchasers requiring financing for the purchase of Units in the Condominium will obtain such funds from third-party lenders, and not from Developer.

Up to three (and not less than one) of the Living Units (Living Units 5, 8 and 14, referred to herein as the “**Subsidized Units**”), will be sold only to buyers whose income does not exceed 80% of the median household income for the family in the Portland Metropolitan Statistical Area (“**MFI**”) as determined from time to time by the U.S. Department of Housing and Urban Development (“**HUD**”) and who qualify for a subsidy of a portion of the sale price of the Unit from Proud Ground, an Oregon nonprofit corporation (“**Proud Ground**”). In addition to buyer’s execution of certain Proud Ground documents and an addendum to the Unit Sales Agreement setting forth the Proud Ground requirements, qualifying buyers meeting the foregoing requirements will be required to execute and record at closing of the purchase of the Unit an affordable housing covenant (the “**Covenant**”) that, in addition to other terms, will require future sales be made only to buyers meeting the Proud Ground income requirements, requires the payment of an ongoing monthly service fee to Proud Ground, limits the amount of gain that the buyer may obtain in a future sale of the unit in order to keep the Unit affordable, provides Proud Ground an option to purchase the Unit and a right of first refusal to acquire the Unit, and provides a right to the Portland Housing Bureau (“**PHB**”) to enforce the covenant. Developer will provide a copy of Proud Ground’s materials and the form of Covenant to each potential buyer of the Subsidized Units.

The Subsidized Units are subject to a Regulatory Agreement with PHB that requires Developer to sell to buyers with not more than 100% of MFI as determined by HUD. Potential buyers of the Subsidized Units will be required to provide proof of income meeting the foregoing requirements.

Use and Occupancy Restrictions

The Units are intended and designated for residential purposes and such limited commercial purposes as may be allowed by the City of Portland and applicable law. Other use restrictions are included in Section 8 of the proposed Bylaws.

Operation and Management of the Condominium

The Oregon Condominium Act (ORS 100.005 to 100.910) (the “Act”) requires that an association of unit owners be created and organized to serve as a means by which the unit owners may take action regarding the administration, management and operation of the Condominium. The Developer will form the Association for this purpose. The Association will be a nonprofit corporation. Each owner of a Unit will automatically become a member of the Association upon purchasing a Unit in the Condominium. Membership in the Association terminates when the owner transfers his or her interest in the Unit. Each member of the Association shall be responsible for participating in the administration and management of the Association and in the maintenance of the Condominium social fabric and Common Elements. Such roles might include service on the Board, landscape maintenance, coordination or performance of work to maintain General Common Elements in good condition, compost management, planning social functions, or other functions as determined by the Board from time to time. Unless otherwise decided by the Board, the amount of time expected by the Owner(s) of a Living Unit with two or more adults will be greater than the time expected of a one adult household. The Board is empowered to create additional policies regarding participation or to provide an option for payment in lieu of participation.

Decision-Making

Consensus will be the primary method of decision-making at all levels of Association governance, except where otherwise required by the Declaration, these Bylaws, or the Act. Using consensus, each member may agree with the matter, disagree with the matter but not block passage, or disagree with the matter and block consensus. If consensus cannot be reached on an issue after two meetings at which an issue has been discussed and at which formal consensus was attempted on that issue, a third meeting may be called and voting may be used. A decision to hold a third meeting and to shift from consensus to voting shall require an affirmative vote of 50 percent of the voting power present at the second meeting. A decision on such issue at the third meeting shall require an affirmative vote of 67 percent of the voting power present for the vote, or such other percentage required by the Act, these Bylaws or the Declaration.

Power and Authority of Board of Directors

The affairs of the Association will be governed by its Board of Directors (the “Board”), provided that the owners may also adopt rules and regulations governing the use of the Condominium and, in the event of conflict between the rules adopted by the Board and those adopted by the owners, the rules adopted by the owners would govern. The Board will consist of from one to three directors prior to the date on which Developer turns over administrative control of the Association to the unit owners, and five or seven directors thereafter. The powers and duties of the Board will include, among other matters: (i) providing for the operation, inspection, maintenance, and repair of the Common Elements of the Condominium; (ii) preparing budgets for the Association; (iii) collecting assessments from the owners; (iv) hiring contractors on behalf of the Association; (v) adopting rules and regulations regarding the operation and use of the Condominium; (vi) obtaining insurance on

behalf of the Association; (vii) filing tax returns on behalf of the Association; and (viii) electing the Association's officers.

The Board is also responsible for enforcing the provisions of the Declaration, the Bylaws, and any rules and regulations. Among the Board's enforcement powers are imposing fines for violations of rules and regulations and assessing late charges for overdue assessments. The Oregon Condominium Act also grants the Association a lien on the unit of an owner whose assessments are past due, and the Board may take action to obtain and foreclose this lien.

Section 4.2 of the Bylaws sets out the general powers and duties of the Board. Sections 6.1 through 6.5 of the Bylaws deal with the preparation of the Association's budget and the levying of assessments against the units. Sections 7.4 through 7.8 of the Declaration address the rights of the board in response to the failure by an owner to pay Association assessments. Section 6.7 of the Bylaws describes the powers of the Board to remedy a violation by an owner of the provisions of the Declaration, the Bylaws, or any rules and regulations.

Until the earlier of three years after the date on which the first unit is conveyed by Developer or the date on which 75 percent of units are sold by the Developer, the Developer will control the affairs of the Association. It is typical that the Developer does so during the early stages of development of a condominium, and the Developer has reserved certain special rights to do so in the Declaration. *See* Section 19 of the Declaration. Prospective purchasers should understand that it is vitally important to all unit owners that the transition of control of the Association from Developer to the unit owners should be accomplished in an orderly manner and in a spirit of cooperation.

Common Expenses, Assessments and Budget

The Association has the right and obligation to levy assessments against unit owners for the maintenance of the Common Elements and other purposes. Failure of a unit owner to pay his or her share of assessments will entitle the Association to file and foreclose a lien on his or her unit or institute an action to recover a money judgment for unpaid common expenses without foreclosing or waiving the lien.

The Bylaws specify that all unit owners are obligated to pay all assessments imposed by the Board of Directors on behalf of the Association to meet common expenses of the property. Such assessments will be made by the Board of Directors in accordance with the terms of the Declaration, which provides that the common profits and common expenses of the Condominium will generally be allocated to the owner of each unit based upon the unit's undivided percentage interest in the Common Elements as described above. In the event an owner of a Unit uses an unreasonably disproportionate amount of a service included in the common expenses, as determined by the board in its sole discretion, such owner will be required to bear the expense of such service individually (as, for example, by separate metering of utilities) and the common expenses incurred by the other owners will be adjusted accordingly. With respect to any deed-restricted units, the Bylaws prohibit the Board from utilizing significantly more expensive replacement materials for General Common Elements that would result in higher reserve assessments or a special assessment against the deed-

restricted Living Units without the consent of the owners of the deed-restricted Living Units, provided that the Board may elect to charge the incremental excess over the cost of materials similar to those in place only to Living Units other than the deed-restricted Living Units.

The anticipated expenses of the Association, including the amount each unit may expect to pay in monthly assessments, are set forth in the estimated budget attached to this Disclosure Statement as Exhibit B. Exhibit B also sets forth the approximate square footage of the units, including only the approximate living area of the Living Units. The budget includes funds allocated for a reserve account, based on the Reserve Study attached to this Disclosure Statement as Exhibit C-1 and the Maintenance Plan attached as Exhibit C-2. The budget, Reserve Study and Maintenance Plan were prepared by the Developer.

NOTICE TO PROSPECTIVE PURCHASERS

THE PROJECTION OF THE BUDGET OF THE ASSOCIATION OF UNIT OWNERS FOR THE OPERATION AND MAINTENANCE AND OTHER COMMON EXPENSES OF THE CONDOMINIUM IS ONLY AN ESTIMATE, PREPARED WITH DUE CARE. ACTUAL EXPENSES INCURRED BY THE ASSOCIATION MAY VARY FROM THOSE ESTABLISHED IN THE PROJECTED BUDGET.

Reserves and Capital Expenditures

Provisions have been made in the projected budget for a reserve account for replacement of those Common Elements all or a part of which will normally require replacement in more than one and less than 30 years, for significant future maintenance items as required by the attached Maintenance Plan and as updated by the Association as required by the Bylaws, and for exterior painting if the common elements include exterior painted surfaces. The reserve account need not include those items that could reasonably be funded from operating assessments.

Developer, in deciding which portion of the Condominium budget should be allocated to the reserve account, has made a good faith projection of the requirements of the Association with respect to replacement of the common elements based upon the Reserve Study attached as Exhibit C-1 to this Disclosure Statement. HOWEVER, THIS PROJECTION MAY VARY SUBSTANTIALLY FROM THE ACTUAL REQUIREMENTS OF THE ASSOCIATION. Except as otherwise provided in the Bylaws, the reserve account may be used only for the purposes for which reserves have been established and must be kept in a separate account. **The reserve study assumes that the Board of Directors conducts normal, routine maintenance for the elements reserved for and that the Board is required to perform pursuant to the Declaration, the Bylaws and the Oregon Condominium Act. If the Board fails to perform required maintenance, the reserve fund may be inadequate at the time of the required replacement for one or more elements included in the reserve study.** The Board must annually conduct a reserve study or review and update an existing study to determine and adjust reserve account requirements. See Section 6.2 of the Bylaws for specific provisions relating to reserves.

Utilities

The project is served by the following utility providers:

Water and Sewer Service:	City of Portland
Electricity:	Pacific Power
Cable Television:	Comcast

The units are metered separately for electricity, and those bills will be paid individually by each unit owner. Living Units 1 through 15 and 17 through 23 will be submetered for water, and the Association will use submeter readings to allocate water and sewer costs to each of these unit owner as part of their monthly assessments. Living Unit 16 will have its own water service, for which its unit owner is responsible. The Association will pay certain electricity and water charges related to the Common Elements, which expenses will be included as part of the monthly assessments. Owners of Living Units with site or path lighting fixtures mounted to them will be responsible for the de minimis electrical use of these fixtures. Prospective purchasers may contact the utility providers for further information on current rates and charges. Local services such as fire and police protection, schools and medical facilities are available in the City of Portland.

Living Units 7, 8, and 9 are required to have domestic fire sprinkler systems. Costs associated with the maintenance, repair and replacement, and annual back-flow prevention testing of fire sprinkler systems in these Living Units is the responsibility of the individual Living Unit owners.

Condition of Components and Systems

All structural components and major mechanical and utility installations in Living Unit 16 are in operating condition, to the best of Developer's knowledge, based on inspections by Developer. Developer did not originally construct the building and is unaware of any maintenance, repairs or replacements to any elements or systems thereof prior to acquisition of the property by the sole owner of Developer in 2015. Except as described in Exhibit D, all structural components and major mechanical and utility installations were, Developer believes, updated and repaired from time to time to keep the building in operating condition. Developer has no knowledge of the condition of building systems and elements prior to Developer's acquisition of the property, except as set forth herein, in the property condition report or other inspection reports.

The estimated remaining useful physical life of the project's structural components and major mechanical and utility installations is included in the property condition report attached as Exhibit D.

THE ASSESSMENT OF THE STRUCTURAL COMPONENTS AND MAJOR MECHANICAL AND UTILITY INSTALLATIONS IN THE CONDOMINIUM WAS PREPARED BY DEVELOPER. Repairs to and maintenance of such structural components and major mechanical and utility installations may, however, be required at any time. Developer does not guarantee the accuracy of such

report and does not warrant that any specific component will last for the period estimated in the reports.

Conversion Procedure

The only tenant in the property within a year prior to the issuance of this Disclosure Statement is the household living in the Existing House that will become Living Unit 16. As required by the Oregon Condominium Act, a 120-day notice of Developer's intent to create the Condominium will be provided to this tenant and the mayor of the City of Portland including, among other items, information regarding the anticipated price of this Units and the estimated monthly expenses to be paid by the owner of this Unit. Upon delivery of the 120-day notice, Developer will submit an affidavit to the Oregon Real Estate Agency documenting that the notice has been sent.

Developer is required by the Oregon Condominium Act to offer to sell the existing dwelling unit in the Condominium, the physical layout of which is not substantially altered as part of the conversion process, to the tenant occupying that unit, before selling the unit to another party. Developer will comply with the requirement of the Act by making such an offer to sell Living Unit 16 to the tenant in Living Unit 16 if a tenant occupies the unit at the time that Developer puts Living Unit 16 on the market.

Streets and Roads

Access to the Condominium is provided by NE Going Street and NE 47th Ave, which are public streets.

Sales Agreements

The Developer is not offering any financing to prospective purchasers. Within the time specified in the purchase agreement, each purchaser must apply for loan approval by an institutional lender. In the event the purchaser is unable to obtain a loan on satisfactory terms or satisfy Developer of purchaser's ability to pay by the date specified in the purchase agreement and after diligent efforts to do so, either party may terminate the Unit sales agreement and purchaser's earnest money will be refunded, unless the time for obtaining such credit approval is extended by the parties. If the agreement has not been terminated within the specified financing contingency period, then the purchaser's financing contingency will be deemed waived. Thereafter, if the purchaser is unable to close the purchase because of inability to obtain a satisfactory loan, a change in financial status, a change in loan terms, or any other reason (other than a breach of the agreement by Developer), then purchaser's earnest money deposit will be paid to and retained by Developer. See Section 13 of the unit sales agreement.

Section 12.6 of the unit sales agreement provides that the purchaser shall inspect the unit and the property prior to closing, and shall have the opportunity at that time to note any defects in construction and to be oriented to the appropriate unit maintenance items. Purchaser and Developer shall sign a form of Acceptance of Unit in which the parties shall note items to be completed or corrected, which Developer shall correct within 30 days

following the closing date or as soon as reasonably practicable thereafter. Except for any defects noted on the inspection and acceptance form and defects warranted against in the Unit Sale Agreement with respect to Living Units 1 through 15 and 17 through 23 and the Parking Units and common elements constructed by Developer, each purchaser agrees to accept the unit and related common elements in the condition existing on the date of inspection, and that completion or correction of the listed items shall in no way delay or interfere with a timely closing.

At closing, the purchaser will be responsible for the recording fee for the deed, any sales or transfer tax, an initial contribution to the working capital of the Association equal to two months of Association assessments, the next month's assessment for the unit, a pro rata share of the current month's assessment, purchaser's portion of the escrow fee, and all fees, costs and expenses in connection with purchaser's loan, if any, including the premium for any mortgagee's title insurance policy. See Section 3.6 of the unit sales agreement. There are trust deeds on the property in favor of Jeffrey Petrillo, Jim Labbe and Ted Labbe. These will be paid off at or prior to the origination of a construction loan with Columbia Bank (the "Construction Lender"). The units will then be conveyed to buyers free of the lien of the Construction Lender, with partial releases issued by the Construction Lender.

If the purchaser should fail to make any deposit or payment required under the unit sales agreement, Developer may declare the purchaser to be in default, and, without prejudice to any other rights of Developer, declare the entire amount paid by the purchaser forfeited to Developer. In the event the purchaser fails to deposit the balance of the purchase price with the escrow agent within the time set forth for closing, Developer may, in lieu of terminating the agreement, require the purchaser to pay to Developer at closing 12% percent per annum of the total purchase price, plus tax and assessment prorates, from such date to the date of actual closing, or pay \$50 per day, whichever is greater. See Sections 4.2 and 16.12 of the unit sales agreement.

Warranties

As required by the Oregon Condominium Act, Developer will warrant to repair or replace defective plumbing, electrical, mechanical, structural, or other components of the newly constructed units and common elements of the Condominium in accordance with the warranty set forth in the unit sales agreement. Living Unit 16 was not constructed by Developer and Developer will not warrant that unit or common elements included in such building. The warranty on a newly constructed unit and associated limited common elements will continue for one year after Developer delivers possession of that unit to the initial unit owner. The warranty on the newly constructed General Common Elements will continue for one year after the first conveyance of a unit in the Condominium. The terms and conditions of Developer's warranty is described in greater detail in the unit sales agreement.

Certain claims, controversies, or disputes relating to the sale must be resolved through mediation or arbitration. See Section 15 of the unit sales agreement, Section 12 of the Bylaws and Section 25 of the Declaration.

Summary of Bylaws Provisions Regarding Operation of the Condominium

Prospective purchasers should carefully review all of the sections of the proposed Declaration and Bylaws, including those identified below that relate to the operation and management of the Condominium.

As provided in Section 16 of the Declaration, upon the recording of the Declaration, Developer will organize the Association to serve as a means through which the unit owners may take action with regard to the administration, management and operation of the Condominium. The Association will be an Oregon nonprofit corporation. As provided in Section 16 of the Declaration, each unit owner will be a member of the Association. The affairs of the Association will be governed by a Board of Directors as provided in the Bylaws. Each unit owner, other than Developer, will be entitled to one vote for each unit owned by that unit owner. *See* Section 8 of the Declaration.

Article 3 of the proposed Bylaws describes the meetings of the Association and the method of voting by members. Article 4 of the Bylaws describes the Board of Directors, including the number and qualification of directors, election of directors, the powers and duties of the Board of Directors, meetings of the Board of Directors, and liability and indemnification of directors, officers and the managing agent. Article 5 of the Bylaws describes the officers of the Association.

Article 6 of the Bylaws describes the budget, expenses and assessments of the Association, including collection of assessments. Records and audits of records of the Association are discussed in Article 7 of the Bylaws.

Article 9 of the Bylaws sets forth the obligations of the unit owners with respect to the maintenance and use of the units and limited common elements. Each owner will be required to maintain his or her Living Unit, as set forth in Section 9.1.1 of the Bylaws. Developer may include deed restrictions for up to three Living Units in order to preserve the affordability of such units over time. If Developer does so, Section 9.1.1 of the Bylaws will include restrictions on the ability of the owners in a building structure that includes one of the deed-restricted Living Units to replace exterior materials with significantly more expensive materials as those that are then in place without the consent of the owners of the deed-restricted Living Units.

In addition, Article 8 of the Bylaws sets forth the use and occupancy restrictions, such as limitations on business activities in units and restrictions on pets, and establishes the ability of the Board of Directors to adopt additional rules and regulations. Article 10 of the Bylaws deals with insurance to be carried by the Association, and Article 11 deals with the method of adopting amendments to the Bylaws. Article 12 relates to dispute resolution, including mediation and mandatory arbitration of disputes.

Rights of Developer

Developer will reserve the right to revise or amend the Declaration and Bylaws to the extent reasonable changes may be required by governmental authorities, lenders or title

insurance companies or any changes to conform to or utilize the provisions of the Oregon Condominium Act or applicable federal or state law, FannieMae guidelines or FannieMae, Federal Housing Authority or Veterans Affairs regulations, or any amendments or revisions thereto. Any other changes to such documents made before closing that materially and adversely affect the purchaser will require the purchaser's consent. If the purchaser does not consent to the change, Developer may terminate the unit sales agreement, in which case the purchaser's earnest money, together with any interest earned on such funds, will be refunded.

Developer will adopt the initial Bylaws and will reserve the right to adopt administrative rules and regulations for the Association, to appoint an interim Board of Directors of the Association, and to enter into a management agreement on behalf of the Association with a managing agent. Developer will also reserve certain easements over the common elements. *See* Sections 13 and 27 of the Declaration.

Until the turnover meeting called by the Developer, the Developer will have two votes for each unit owned by the Developer and will have the right to appoint the Board of Directors of the Association along with the right to fully participate in consensus decision-making processes. *See* Sections 3 and 4 of the Bylaws and Sections 19 and 27 of the Declaration. Developer must call the turnover meeting within 90 days after the earlier to occur of (i) three years after the date of the first conveyance of the first unit to a person other than Developer, or (ii) Developer has sold and conveyed 75 percent or more of the total number of units in the Condominium. *See* Section 3.3 of the Bylaws. At that meeting, the interim directors will resign and the unit owners will elect directors. *See* Section 3.4 of the Bylaws.

The Developer's prior written consent is required for any amendment to the Declaration or Bylaws so long as Developer owns a Living Unit in the Condominium or 10 years from the date the Declaration is recorded, whichever is latest. *See* Section 27.7 of the Declaration and Section 11.5 of the Bylaws.

Additional Information

Purchasers should be aware that urban attached condominium living differs from detached single-family living in that such structures inherently are subject to some sound transmission from unit to unit and from common areas to units and from urban street noise. Before deciding to purchase, each prospective purchaser should satisfy himself or herself that the level of sound transmission at this project will be acceptable to the purchaser. This includes checking (personally or through a qualified inspector of the purchaser's choice) the proposed construction details and, at construction completion, actual noise transmission levels. Developer makes no representation or warranty regarding the existence of or changes in the level of noise, light, air or view benefiting or burdening the unit specifically or the condominium generally.

Any square footages of the unit provided by Developer or Developer's agents are approximate and based upon "architectural" measurements taken from architectural plans. Final square footages may differ, and the square footages in the Declaration and condominium plat will be based upon condominium measurement standards, which are not

the same as "architectural" measurements. Developer does not guarantee any specific square footage.

The Condominium will need certain periodic maintenance and inspections in order to assure the safety of the property and that its various components last for their projected useful lives. The Maintenance Plan identifies many, but not all, of the components of the common elements requiring periodic and regularly scheduled maintenance and inspections. Failure to follow the Maintenance Plan could impair the safety of the Condominium, reduce the useful lives of its components and increase future maintenance costs.

Documents by which Purchasers will be Bound

Prospective purchasers should carefully read all of the documents pertaining to the Condominium by which they will be bound. These documents include the following:

1. Proposed Declaration Submitting Cully Green Condominium to Condominium Ownership. The Declaration contains, among other things, provisions describing the units, the Common Elements, the rights of mortgagees, easements, and Developer's rights.
2. Proposed Bylaws of the Cully Green Condominium Owners' Association. This document contains, among other things, provisions relating to the management, use and operation of the Association and the rights and obligations of the unit owners.
3. Escrow Agreement between Developer and Fidelity National Title, Fara Laner, Escrow Officer. This document provides for deposit of funds into escrow and outlines a general procedure for the closing of unit sale transactions.
4. Unit Sales Agreement. This document sets forth the rights and obligations of the seller and purchaser and includes a notice to the purchaser of a statutory right to cancel the transaction within five business days after mutual execution of the unit sales agreement.
5. Proposed Articles of Incorporation of the Cully Green Condominium Owners' Association. This document contains provisions outlining the purpose and powers, membership, voting rights and dissolution of the Association.
6. Purchasers should review each of the easements and use restrictions referred to in the preliminary title report which will be furnished to them by Fidelity National Title.
7. In addition, purchasers may be bound by financing instruments, the Condominium plat, escrow instructions and provisions of the Oregon Condominium Act. Prospective purchasers should also inquire regarding rules and regulations, if any, that may have been adopted since the date of this Disclosure Statement.

EXHIBIT A

Plans

Features, options, floor plans, elevations, designs, specifications, square footages, and descriptions are subject to change without notice. Square footages are approximate and may vary in construction and depending on the standard measurement used. Developer reserves the right to make changes to its plans and the project design and layout. All renderings and floor plans are conceptual drawings and will vary from the actual plans and units as built.

{00894998;5}

**EXHIBIT A – CONDOMINIUM DISCLOSURE STATEMENT FOR CULLY GREEN
CONDOMINIUM**

BONN DESIGN
 David Bonn, Principal
 bonndesign@yahoo.com
 971-203-3633

Orange Spilot LLC
 4751 NE Going St
 Portland, OR 97218
 Eli Spevak@arscnr.com
 503-422-2607

PROJECT:
 CULLY GREEN
 4756, 4752 NE GOING ST.
 and 4540 NE 47th AVE
 PORTLAND, OREGON 97218

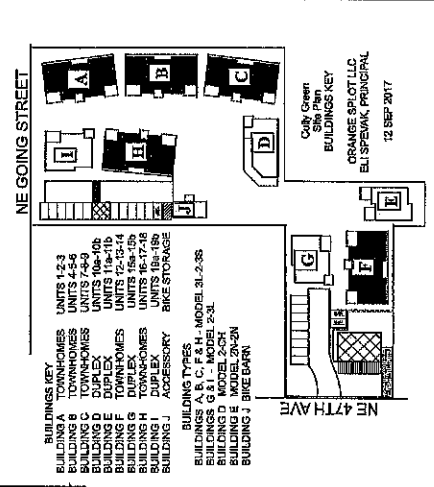
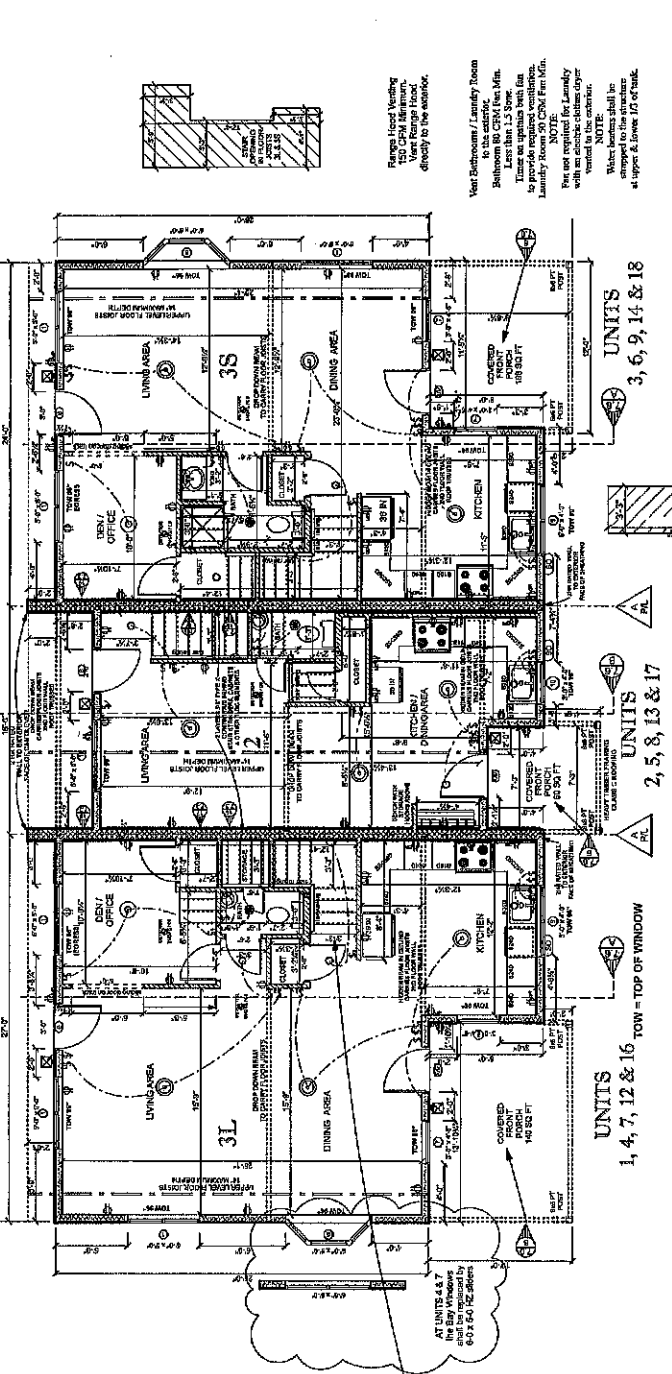
REVISIONS	DATE	DESCRIPTION
*	1 MAY 2019	Revision a
	9 MAY 2018	Revision d
	20 JUN 2018	Revision e

DATE: 21 OCT 11
 SCALE: 1/4" = 1'-0"
 DRAWN BY: DJB

3L - 2 - 3S
 BUILDINGS A, B, C, F & H
 MAIN LEVEL PLAN

A 2.0

Townhouses are required to have separated electrical, water and gas utilities. (RSDZ.11.2)



BUILDING KEY

BUILDING	TYPE
BUILDING A	TOWNHOMES
BUILDING B	TOWNHOMES
BUILDING C	TOWNHOMES
BUILDING D	TOWNHOMES
BUILDING E	TOWNHOMES
BUILDING F	TOWNHOMES
BUILDING G	TOWNHOMES
BUILDING H	TOWNHOMES
BUILDING I	TOWNHOMES
BUILDING J	TOWNHOMES

BUILDING TYPES

UNIT	MODEL
UNITS 1-2-3	MODEL 3L-2-3S
UNITS 4-5-6	MODEL 3L-2-3S
UNITS 7-8-9	MODEL 3L-2-3S
UNITS 10-11	MODEL 3L-2-3S
UNITS 12-13-14	MODEL 3L-2-3S
UNITS 15-16-17	MODEL 3L-2-3S
UNITS 18-19	MODEL 3L-2-3S
UNITS 20-21	MODEL 3L-2-3S
UNITS 22-23	MODEL 3L-2-3S
UNITS 24-25	MODEL 3L-2-3S
UNITS 26-27	MODEL 3L-2-3S
UNITS 28-29	MODEL 3L-2-3S
UNITS 30-31	MODEL 3L-2-3S
UNITS 32-33	MODEL 3L-2-3S

MAIN LEVEL

UNIT	QTY	EGRESS*	IMPRO	PLAN ID
5-0 X 5-0 DOUBLE UNIT - SINGLE HUNG	7	Y		1
5-0 X 5-0 SINGLE UNIT - SINGLE HUNG	4			7
5-0 X 5-0 DOUBLE UNIT - SINGLE HUNG	2			8
5-0 X 5-0 SINGLE UNIT - SINGLE HUNG	10			10
5-0 X 5-0 SINGLE UNIT - SINGLE HUNG	3			11
ENTRY DOOR 3-0 WITH 1-2 TRANSOM	3			A
REAR DOOR 3-0 WITH 1-2 TRANSOM	3			B
TOTAL WINDOWS	18			
TOTAL WINDOW AREA	16			
5-0 X 5-0 DOUBLE UNIT - SINGLE HUNG	3	Y		1
3-0 X 5-0 SINGLE UNIT - SINGLE HUNG	6	Y		2
2-8 X 5-0 TRIPLE UNIT - CASSEMENT	3	Y		4
2-8 X 5-0 SINGLE UNIT - SINGLE HUNG	3	Y		5
3-0 X 5-0 SINGLE UNIT - SINGLE HUNG	3			6
TOTAL WINDOWS	18			11
TOTAL WINDOW AREA	16			
*MEETS THE STANDARD FOR EGRESS				
NET FREE AREA 5.7 SQUARE FEET				
(28.5' X 20' FOR 2.8 X 5-0 S/H)				
MINIMUM NET OPENING WIDTH 20"				
MINIMUM NET OPENING HEIGHT 24"				
MAXIMUM SILL HEIGHT 24"				

BUILDINGS A, B, C, F & H
 3L - 2 - 3S

UNIT

UNIT	QTY	EGRESS*	IMPRO	PLAN ID
5-0 X 5-0 DOUBLE UNIT - SINGLE HUNG	7	Y		1
5-0 X 5-0 SINGLE UNIT - SINGLE HUNG	4			7
5-0 X 5-0 DOUBLE UNIT - SINGLE HUNG	2			8
5-0 X 5-0 SINGLE UNIT - SINGLE HUNG	10			10
5-0 X 5-0 SINGLE UNIT - SINGLE HUNG	3			11
ENTRY DOOR 3-0 WITH 1-2 TRANSOM	3			A
REAR DOOR 3-0 WITH 1-2 TRANSOM	3			B
TOTAL WINDOWS	18			
TOTAL WINDOW AREA	16			
5-0 X 5-0 DOUBLE UNIT - SINGLE HUNG	3	Y		1
3-0 X 5-0 SINGLE UNIT - SINGLE HUNG	6	Y		2
2-8 X 5-0 TRIPLE UNIT - CASSEMENT	3	Y		4
2-8 X 5-0 SINGLE UNIT - SINGLE HUNG	3	Y		5
3-0 X 5-0 SINGLE UNIT - SINGLE HUNG	3			6
TOTAL WINDOWS	18			11
TOTAL WINDOW AREA	16			
*MEETS THE STANDARD FOR EGRESS				
NET FREE AREA 5.7 SQUARE FEET				
(28.5' X 20' FOR 2.8 X 5-0 S/H)				
MINIMUM NET OPENING WIDTH 20"				
MINIMUM NET OPENING HEIGHT 24"				
MAXIMUM SILL HEIGHT 24"				

UNITS
 1, 4, 7, 12 & 16 TOW = TOP OF WINDOW
 2, 5, 8, 13 & 17
 3, 6, 9, 14 & 18

ELECTRICAL LAYOUT
 The electrical details shown are for information only. All electrical wiring and devices shall be installed in accordance with the applicable electrical code by a licensed electrical contractor.

- CEILING LIGHT FIXTURE - LED
- HALLWAYS - CLOSETS
- FAN - LIGHT BATHROOM/LAUNDRY AREA
- WEATHER-PROOF EXTERIOR OUTLET
- GFI OUTLET
- OUTLET 220V
- SMOKE / CO DETECTOR
- WALL SWITCH
- SWITCH 3-WAY
- EXTERIOR LIGHT
- STAIRWELL ILLUMINATION
- WALL SCONCES
- 3-WAY SWITCHES TOP & BOTTOM
- CEILING LIGHT FIXTURE - LED
- SWITCHED OUTLET UNDER SINK FOR GARBAGE DISPOSAL

- 5 FT TUB-SHOWER COMBO
- BATH LAUNDRY
- MEN WALL LAUNDRY
- SHOWER UNIT 36" X 36"
- TOILET
- DISHWASHER - BUILT IN
- ELECTRIC RANGE - 30"
- REFRIGERATOR
- STACK WASHER/DRYER - FUTURE
- KITCHEN SINK - SINGLE BOWL
- ELECTRIC WATER HEATER
- ATTIC ACCESS
- ELECTRICAL PANEL BOX
- CASSET WALL HEATER/WALL THERMOSTAT
- EXHAUST FAN
- SMOKE - CARBON MONOXIDE DETECTOR
- RADON VENT PIPE



Orange Spilot LLC
 4751 NE GOING ST
 PORTLAND, OR 97218
 Eli Spevak@arscnr.com
 503-422-2607

Orange Spilot LLC
 4751 NE GOING ST
 PORTLAND, OR 97218
 Eli Spevak@arscnr.com
 503-422-2607

Orange Spilot LLC
 4751 NE GOING ST
 PORTLAND, OR 97218
 Eli Spevak@arscnr.com
 503-422-2607

Orange Spilot LLC
 4751 NE GOING ST
 PORTLAND, OR 97218
 Eli Spevak@arscnr.com
 503-422-2607

Orange Spilot LLC
 4751 NE GOING ST
 PORTLAND, OR 97218
 Eli Spevak@arscnr.com
 503-422-2607

Orange Spilot LLC
 4751 NE GOING ST
 PORTLAND, OR 97218
 Eli Spevak@arscnr.com
 503-422-2607

Orange Spilot LLC
 4751 NE GOING ST
 PORTLAND, OR 97218
 Eli Spevak@arscnr.com
 503-422-2607

Orange Spilot LLC
 4751 NE GOING ST
 PORTLAND, OR 97218
 Eli Spevak@arscnr.com
 503-422-2607

BONN DESIGN
David Bonn, Principal
bonndesign@yahoo.com
971-203-3633

Orange Spot LLC
4751 NE Going St
Portland, OR 97218
Eli Spevak@aracnet.com
503-422-2607

PROJECT:
CULLY GREEN
4736, 4752 NE GOING ST.
and 4540 NE 47th AVE
PORTLAND, OREGON 97218

REVISIONS	
DATE	DESCRIPTION
29 MAR 2018	Revision a
1 MAY 2018	Revision b
8 MAY 2018	Revision d
20 JUN 2018	Revision e

DATE: 22 OCT 17
SCALE: 1/4" = 1'-0"
DRAWN BY: D.B.

3L-2-3S
BUILDINGS A, B, C, F & H
UPPER LEVEL PLAN

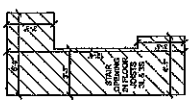
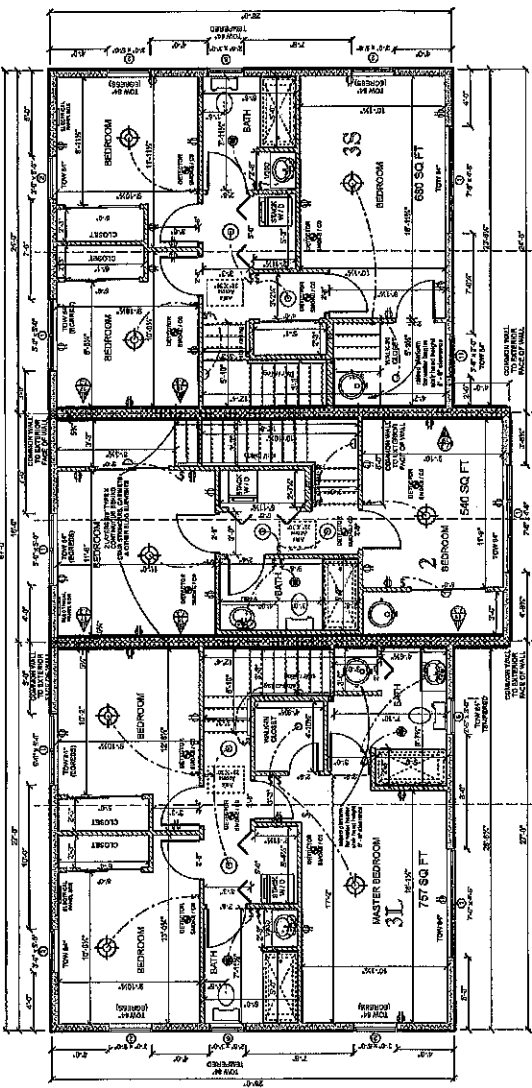
A 2.1

Townhouses are required to have separated electrical, water and gas utilities. (R302.2.1.2)

UNITS 3, 6, 9, 14 & 18

UNITS 2, 5, 8, 13 & 17

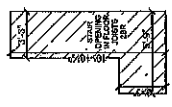
UNITS 1, 4, 7, 12 & 16



Large Head Venting
150 CFM Minimum
1/2" Dia. Vent Pipe
Ready to be connected to the furnace.

Van Bathroom / Laundry Room
to the exterior.
Bathroom 80 CFM Fan Min.
Exhaust to the exterior.
Exhaust Fan 1.5" Dia. Min.
to provide required ventilation.
Laundry Room 30 CFM Fan Min.
Exhaust to the exterior.
Fan not required for Laundry
with an electric clothes dryer
vent to the exterior.
NOTE:
Water heaters shall be
vented to the exterior
in attic & above 10' high.

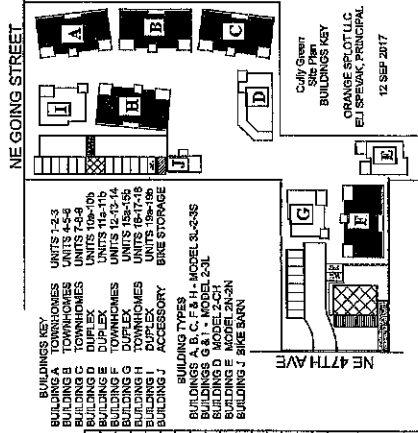
BUILDINGS A, B, C, F & H
3L-2-3S



TOW = TOP OF WINDOW

DRAWING KEY

- 5 FT. TUB/SHOWER COMBO
- BATH LAUNDRY
- MINI WALL LAUNDRY
- SHOWER UNIT 80"x 36"
- TOILET
- DISHWASHER - BUILT IN
- HALLWAYS - CLOSET
- RANGE - 36"
- REFRIGERATOR
- STACK WASH/DRYER - FUTURE
- KITCHEN SINK - SINGLE BOWL
- ELECTRIC WATER HEATER
- ATTIC ACCESS
- ELECTRICAL PANEL BOX
- CADET WALL HEATER/WALL THERMOSTAT
- EXHAUST FAN
- SWITCHES OUTLET UNDER SINK FOR GARBAGE DISPOSAL
- RADON VENT PIPE



MAIN LEVEL UNIT	QTY	EGRESS*	TYPED	PLAND
5-0 X 5-0 DOUBLE UNIT - SINGLE HUNG	7	Y		1
3-0 X 4-0 SINGLE UNIT - SINGLE HUNG	4			2
5-0 X 4-0 DOUBLE UNIT - SINGLE HUNG	2			3
3-0 X 4-0 SINGLE UNIT - SINGLE HUNG	1			4
6-0 X 5-0 BAY WINDOW	2			5
ENTRY DOOR 3-0 WITH 14" TRANSOM	3			6
REAR DOOR HALF LITE WITH 14" TRANSOM	3			7
TOTAL WINDOWS	15			
UPPER LEVEL				
5-0 X 5-0 DOUBLE UNIT - SINGLE HUNG	3	Y		1
3-0 X 4-0 SINGLE UNIT - SINGLE HUNG	5			2
7-5 X 4-5 TRIPLE UNIT - CASEMENT	3	Y		3
2-5 X 3-0 SINGLE UNIT - SINGLE HUNG	3			4
3-0 X 2-0 SINGLE UNIT - FIXED	1			5
TOTAL WINDOWS	15			

* MEETS THE STANDARD FOR EGRESS
NET CLEARANCE 6'8" MIN. HEIGHT
MINIMUM NET OPENING WIDTH 20"
MINIMUM NET OPENING HEIGHT 24"
MAXIMUM SILL HEIGHT 44"

ELECTRICAL LAYOUT
The electrical details shown are for informational purposes only. All electrical components and all other electrical components shall be installed in accordance with the applicable code requirements by a licensed electrical contractor.

- CEILING LIGHT FIXTURES - LED
- CEILING LIGHT FIXTURES - LED
- FAN - LIGHT BATHROOM/LAUNDRY AREA
- WEATHERPROOF EXTERIOR OUTLET
- GFI OUTLET
- GFI OUTLET
- SMOKE/CO DETECTOR
- WALL SWITCH
- SWITCH 2-WAY
- EXTERIOR LIGHT
- EXTERIOR LIGHT
- WALL SWITCHES
- 3-WAY SWITCHES
- CEILING LIGHT FIXTURE - LED
- SWITCHES OUTLET UNDER SINK FOR GARBAGE DISPOSAL

BUILDINGS KEY
BUILDING A: TOWNHOMES UNITS 1-3
BUILDING B: TOWNHOMES UNITS 4-6
BUILDING C: TOWNHOMES UNITS 7-9
BUILDING D: DUPLEX UNITS 10-14
BUILDING E: TOWNHOMES UNITS 15-18
BUILDING F: TOWNHOMES UNITS 19-21
BUILDING G: DUPLEX UNITS 22-24
BUILDING H: TOWNHOMES UNITS 25-28
BUILDING I: TOWNHOMES UNITS 29-32
BUILDING J: BIKE STORAGE

BUILDINGS KEY
Cully Green
Site Plan
BUILDINGS KEY
ORANGE SPOT LLC
ELI SPEVAK, PRINCIPAL
12 SEP 2017

BONN DESIGN
 David Bonn, Principal
 bonndesign@yahoo.com
 971.203.3633

Orange Sploit LLC
 4751 NE Going St
 Portland, OR 97218
 Eli Spevak@aracnet.com
 503.422.2607

PROJECT:

CULLY GREEN
 4736, 4752 NE GOING ST.
 and 4540 NE 47th AVE
 PORTLAND, OREGON 97218

#	DATE	DESCRIPTION
	18 FEB 2016	Revision a
	1 MAY 2016	Revision b
	20 JUN 2016	Revision e

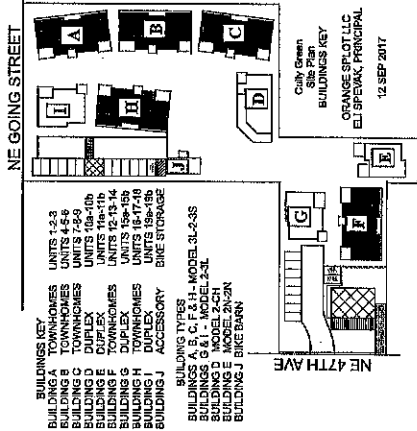
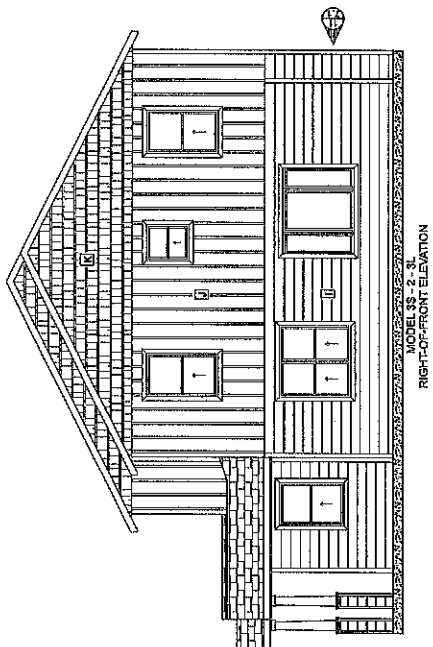
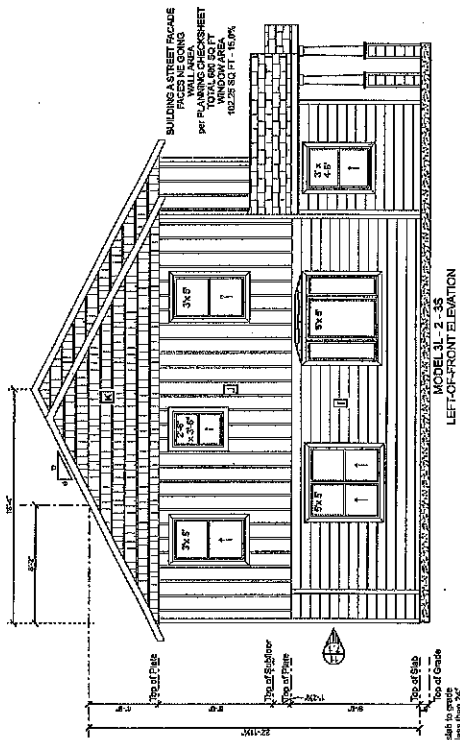
DATE 3 OCT 11
 SCALE 1/4" = 1'-0"
 DRAWN BY DJB

31-2-3S
BUILDINGS A, B, C, F & H
ELEVATIONS
LEFT OF FRONT
RIGHT OF FRONT

A 2.4

ELEVATION KEY NOTES

- A. 3 1/2" (MIN) WOOD TRIM
 - B. 606 PT POST
 - C. 2x6 JOISTS
 - D. 2x6 TRIMMER PORCH FRAMING
 - E. METAL GUTTER - PAINTED
 - F. 4x4 PT POST
 - G. COMPOSITE SHINGLE BUMF-OUT ROOF
 - H. WOOD BELLY BAND
 - I. HORIZONTAL CERAMTIOUS SIDING
 - J. BOARD AND BATTEN SIDING
 - K. SHAKE STYLE SIDING
 - L. CONCRETE PORCH SLAB
 - M. ADDRESS NUMBER
- ADDRESS SHALL CONTRAST WITH BACKGROUND COLOR AT LEAST MIN. MINIMUM STROKE WIDTH 1/2"



BONN DESIGN
 David Bonn, Principal
 bonndesign@yahoo.com
 971.203.3633

Orange Spilot LLC
 4751 NE Going St
 Portland, OR 97218
 Eli Spevak@racnet.com
 503.422.2607

PROJECT:
 CULLY GREEN
 4736, 4752 NE GOING ST.
 and 4540 NE 47th AVE
 PORTLAND, OREGON 97218

DATE	DESCRIPTION
16 FEB 2016	REVISION a
30 MAR 2016	REVISION b
1 MAY 2016	Revision c
8 MAY 2016	Revision d
22 JUN 2016	Revision e

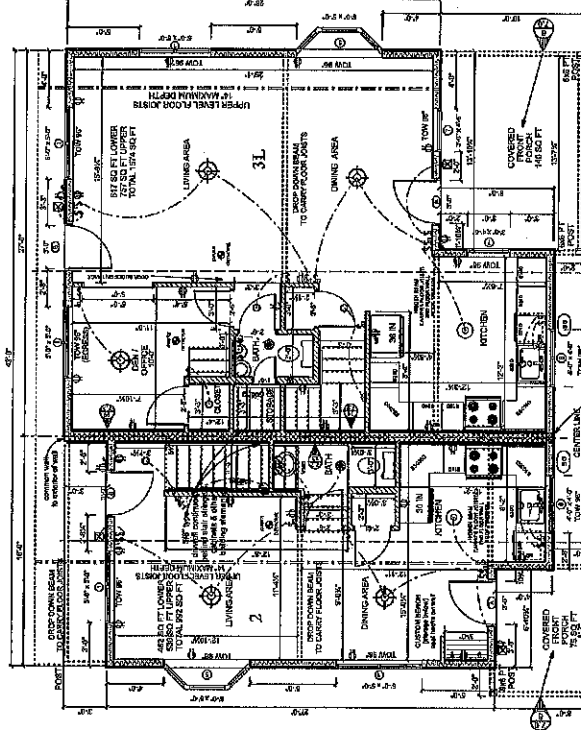
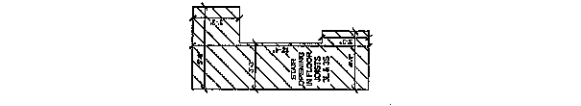
DATE	29 OCT 11
SCALE	1/4" = 1'-0"
DRAWN BY	DAB

2 - 3L
 BUILDINGS G & I
 MAIN LEVEL PLAN

A 3.0

DRAWING KEY

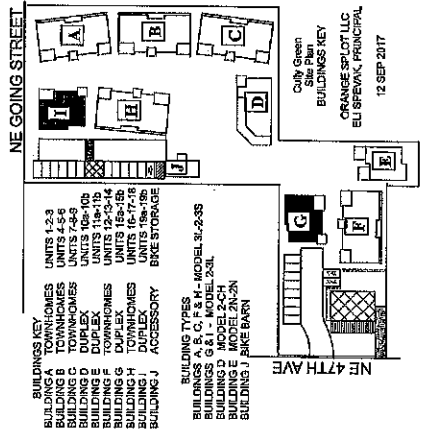
- 5 FT TUB/SHOWER COMBO
- BATH LAVATORY
- MINI HALL LAVATORY
- SHOWER UNIT 36" x 36"
- TOILET
- DISHWASHER - BUILT IN
- ELECTRIC RANGE - 30"
- REFRIGERATOR
- STACK WASHER/DRYER - FUTURE
- KITCHEN SINK - SINGLE BOWL
- ELECTRIC WATER HEATER
- ATTIC ACCESS
- ELECTRICAL PANEL BOX
- CADET WALL HEATER-WALL THERMOSTAT
- EXHAUST FAN
- SMOKE - CARBON DIOXIDE DETECTOR
- RADON VENT PIPE



UNITS
 15a & 19a

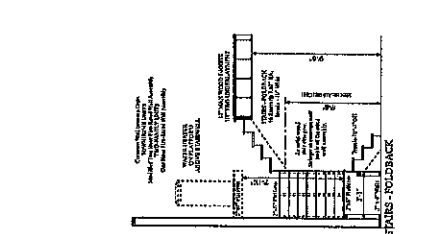
BUILDINGS G & I
 2 - 3L

UNITS
 15a & 19a



NE GOING STREET
 NE 47TH AVE

MAIN LEVEL UNIT	QTY	EGRESS	TRANSOM	PLAND
5-0 X 5-0 DOUBLE UNIT - SINGLE HUNG	5	Y		1
3-0 X 4-6 SINGLE UNIT - SINGLE HUNG	2			7
4-0 X 4-0 DOUBLE UNIT - SINGLE HUNG	2			8
6-0 X 5-0 BAY WINDOW	2			5
ENTRY DOOR 5-0 W/ 1'-0" TRANSOM	2			A
REAR DOOR HALF W/ 1'-0" TRANSOM	2			B
TOTAL WINDOWS	11			
UPPER LEVEL				
5-0 X 5-0 DOUBLE UNIT - SINGLE HUNG	3	Y		1
3-0 X 4-6 SINGLE UNIT - SINGLE HUNG	4			2
7-8 X 4-6 TRIPLE UNIT - CASSEMENT	2	Y		4
2-9 X 5-0 SINGLE UNIT - SINGLE HUNG	1			12
3-0 X 4-0 SINGLE UNIT - SINGLE HUNG	1			10
TOTAL WINDOWS	12			
* MEETS THE STANDARD FOR EGRESS				
NET FREE AREA 57 SQUARE FEET				
(28.5' X 28' FOR 2-5 X 5-0 S/H)				
MINIMUM NET OPENING WIDTH 20"				
MINIMUM NET OPENING HEIGHT 24"				
MAXIMUM SILL HEIGHT 44"				



STAIRWELL ILLUMINATION

- CEILING LIGHT FIXTURE - LED
- HALLWAYS - CLOSETS
- FAN - LIGHT BATH ROOMS/LAUNDRY AREA
- WEATHERPROOF EXTERIOR OUTLET
- GFI OUTLET
- OUTLET 220V
- SMOKE / CO DETECTOR
- WALL SWITCH
- SWITCH 2-WAY
- EXTERIOR LIGHT
- STAIRWELL ILLUMINATION
- WALL SWITCHES TOP & BOTTOM
- SWITCHED OUTLET UNDER SINK
- FOR GARBAGE DISPOSAL



ELECTRICAL LAYOUT
 The electrical details shown are for information only. All electrical wiring/outlets/switches and all other electrical components shall be installed in accordance with the applicable electrical code by a licensed electrical contractor.

Notes:
 1. Verify Bathing / Laundry Room Bathroom 50 CFM Fan Min. Less than 1.5 Sinc. Times on upstream total fan. Laundry Room 30 CFM Fan Min. NOTE: See note on Unit 15a & 19a for an electric control drop wired to the exterior.
 2. Water: Water shall be strapped to the structure at upper & lower 1/3 of tank.

BONN DESIGN
 David Bonn, Principal
 bonndesign@yahoo.com
 971.203.3633

Orange Spilot, LLC
 4751 NE Going St
 Portland, OR 97218
 Eli Spevak@arantec.com
 503.422.2607

PROJECT:
 CULIY GREEN
 4736, 4732 NE GOING ST.
 and 4540 NE 47th AVE
 PORTLAND, OREGON 97218

#	DATE	DESCRIPTION
1	15 FEB 2018	Revision CK Sheet 1
2	30 MAR 2018	Revision 2&3 walls
3	1 MAY 2018	Revision c
4	8 MAY 2018	Revision d
5	22 JUN 2018	Revision e

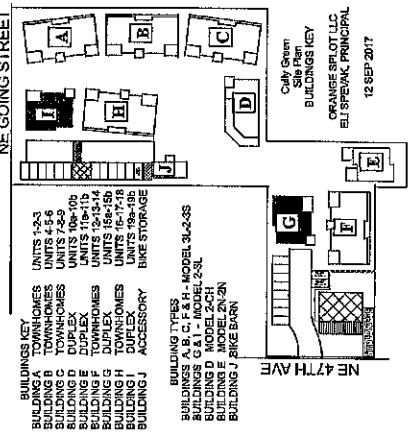
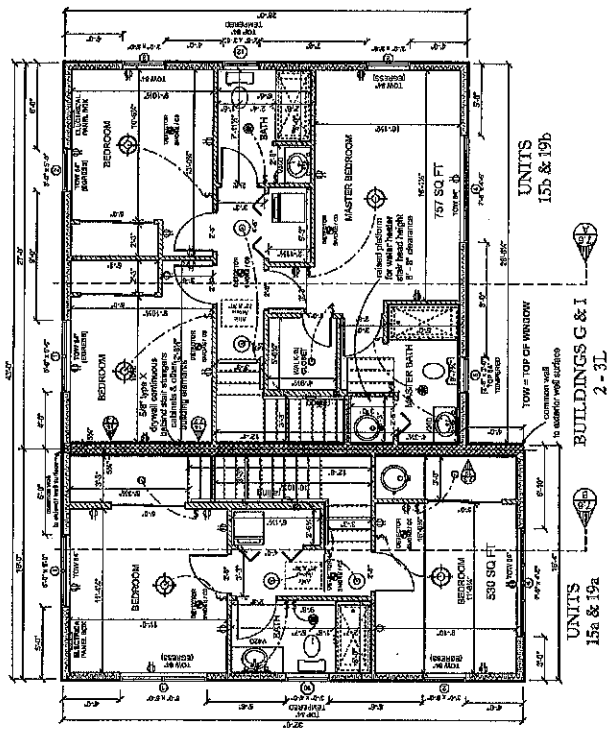
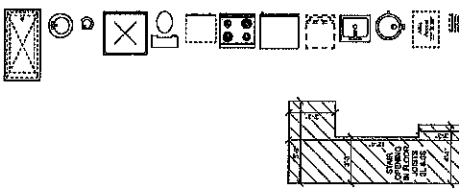
DATE	Z OCT T
SCALE	1/4" = 1' - 0"
DRAWN BY	DJS

2-3L
 BUILDINGS G & I
 UPPER LEVEL PLAN

A 3.1

DRAWING KEY

- 5 FT TUBSHOWER COMBO
- BATH LAVATORY
- MINI WALL LAVATORY
- SHOWER UNIT 36" x 36"
- TOILET
- DISHWASHER - BUILT IN
- ELECTRIC RANGE - 30"
- REFRIGERATOR
- STACK WASHERDRYER - FUTURE
- KITCHEN SINK - SINGLE BOWL
- ELECTRIC WATER HEATER
- ATTIC ACCESS
- ELECTRICAL PANEL BOX
- CADET WALL HEATER-WALL THERMOSTAT
- EXHAUST FAN
- SMOKE - CARBON DIOXIDE DETECTOR
- RADDON VENT PIPE



- BUILDING KEY**
- BUILDING A UNITS 1-33
 - BUILDING B TOWNHOMES UNITS 4-5-6
 - BUILDING C TOWNHOMES UNITS 7-8-9
 - BUILDING D DUPLEX UNITS 10-10b
 - BUILDING E TOWNHOMES UNITS 12-13-14
 - BUILDING F DUPLEX UNITS 15a-15b
 - BUILDING G TOWNHOMES UNITS 16-17-18
 - BUILDING H DUPLEX UNITS 19a-19b
 - BUILDING I ACCESSORY BKE STORAGE
 - BUILDING J UNITS 20-21
- BUILDING TYPES**
- BUILDINGS A, B, C, F, H - MODEL 3L-2-3S
 - BUILDING D - MODEL 2CH
 - BUILDING E - MODEL 2CH
 - BUILDING G - MODEL 2N-2N
 - BUILDING J - BRICE BARN

UNIT	CITY	EGRESS	TYPED PLAN ID
50 X 50 DOUBLE UNIT - SINGLE HUNG	3	Y	7
50 X 50 SINGLE UNIT - SINGLE HUNG	2	Y	8
44 X 40 DOUBLE UNIT - SINGLE HUNG	2	Y	9
60 X 50 BAY WINDOW	2	Y	A
ENTRY DOOR 2-0 WITH 14" TRANSOM	2	Y	B
REAR DOOR HALF LITE WITH 14" TRANSOM	2	Y	B
TOTAL WINDOWS	11		
UPPER LEVEL			
50 X 50 DOUBLE UNIT - SINGLE HUNG	3	Y	1
50 X 50 SINGLE UNIT - SINGLE HUNG	4	Y	2
73 X 44 TRIPLE UNIT - CASEMENT	2	Y	4
24 X 50 SINGLE UNIT - SINGLE HUNG	1	Y	6
24 X 50 SINGLE UNIT - SINGLE HUNG	1	Y	6
24 X 45 SINGLE UNIT - SINGLE HUNG	1	Y	10
TOTAL WINDOWS	12		
* MEETS THE STANDARD FOR EGRESS FEET			
NET FREE AREA 57.7 SQUARE FEET			
(25.6' X 23' FOR 2.6 X 6.0 SH)			
MINIMUM NET OPENING WIDTH 20"			
MINIMUM NET OPENING HEIGHT 24"			
MAXIMUM SILL HEIGHT 48"			

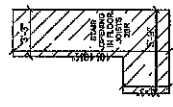
Rearp Hood Venting
 150 CFM Minimum
 Exhaust to the exterior.

Vest Bathroom / Laundry Room
 to the exterior.

Bedroom 10 CFM Fan Min.
 Bedroom 15 CFM Fan Min.
 Time on switch back fan
 to provide required ventilation.
 Laundry Room 15 CFM Fan Min.
 100% Exhaust to the exterior.

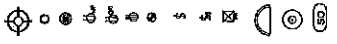
Fan not required for Laundry
 with an electric clothes dryer
 vented to the exterior.

Water fixtures shall be
 wrapped in this structure
 at support to lower 25' of wall.



ELECTRICAL LAYOUT
 The electrical details shown
 are for information only.
 All electrical wiring, outlets, switches
 and all other electrical components
 shall be installed in accordance
 with the applicable electrical code
 by a licensed electrical contractor.

- CEILING LIGHT FIXTURE - LED
- HALLWAYS - CLOSETS
- FAN - LIGHT BATHROOM/LAUNDRY AREA
- WEATHERPROOF EXTERIOR OUTLET
- GRT OUTLET
- OUTLET 220V
- SMOKE / CO DETECTOR
- WALL SWITCH
- SWITCH 3-WAY
- EXTERIOR LIGHT
- STARWELL ILLUMINATION
- WALL (SCONES)
- 3-WAY SWITCHES TOP & BOTTOM
- CEILING LIGHT FIXTURE - LED
- SWITCHED OUTLET UNDER SINK
 FOR GARBAGE DISPOSAL



BONN DESIGN
 David Bonn, Principal
 bonndesign@yahoo.com
 971.203.3633

Orange Spot LLC
 4751 NE Going St
 Portland, OR 97218
 BH Spevak@aracnet.com
 503.422.2607

PROJECT:
 CULLY GREEN
 4736, 4752 NE GOING ST.
 and 4540 NE 47th AVE
 PORTLAND, OREGON 97218

REVISIONS	DATE	DESCRIPTION
*	2 APR 2018	Revisions a & b
	1 MAY 2018	Revision c
	8 MAY 2018	Revision d
	22 JUN 2018	Revision e

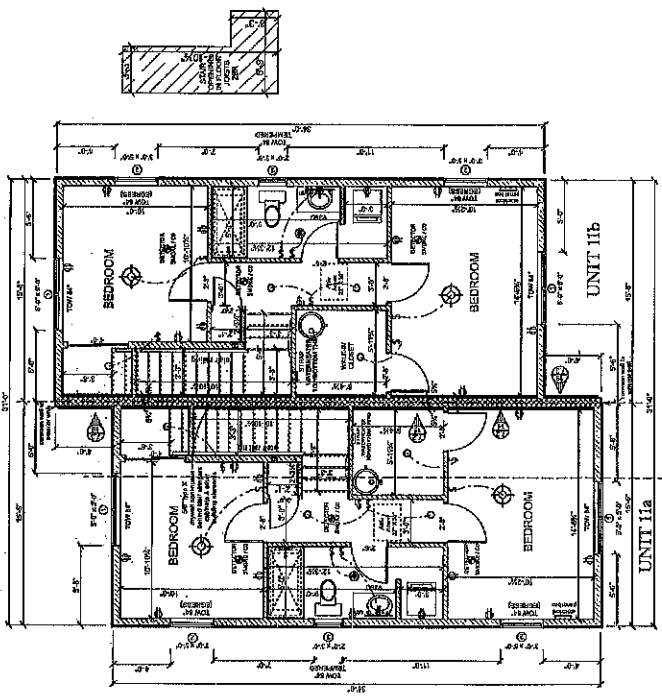
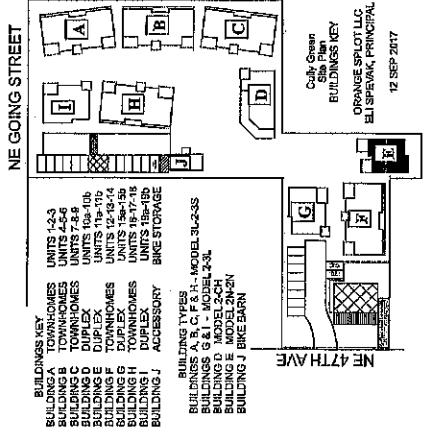
DATE	16 OCT 17
SCALE	1/4" = 1' - 0"
DRAWN BY	DJB

2N - 2N
 BUILDING B
 UPPER
 LEVEL

A 4.1

DRAWING KEY

- 6 FT TUBSHOWER COMBO
- BATH LAVATORY
- MINI WALL LAVATORY
- SHOWER UNIT 96" x 36"
- TOILET
- DISHWASHER - BUILT IN
- ELECTRIC RANGE - 30"
- REFRIGERATOR
- STACK WASHERDRYER - FUTURE
- KITCHEN SINK - SINGLE BOWL
- ELECTRIC WATER HEATER
- ATTIC ACCESS
- ELECTRICAL PANEL BOX
- CADET WALL HEATER-WALL THERMOSTAT
- EXHAUST FAN
- SMOKE - CARBON DIOXIDE DETECTOR
- RADON VENT PIPE



BUILDING 2N - 2N

MAIN LEVEL	UNIT	QTY	EGRESS*	TMPRD PLAN ID
	6-0 X 5-0 DOUBLE UNIT - SINGLE HUNG	6	Y	1
	3-0 X 5-0 SINGLE UNIT - SINGLE HUNG	2	Y	2
	4-0 X 4-0 DOUBLE UNIT - SINGLE HUNG	2		8
	ENTRY DOOR 3-0 WITH 14" TRANSOM	2		A
	REAR DOOR HALF LITE WITH 14" TRANSOM	2		B
	TOTAL WINDOWS	10		
UPPER LEVEL				
	5-0 X 5-0 DOUBLE UNIT - SINGLE HUNG	4	Y	1
	3-0 X 5-0 SINGLE UNIT - SINGLE HUNG	4	Y	2
	2-0 X 3-0 SINGLE UNIT - SINGLE HUNG	2	Y	3
	TOTAL WINDOWS	10		
	* MEETS THE STANDARD FOR EGRESS			
	NET FREE AREA 5.7 SQUARE FEET			
	(26.5' X 29' FOR 2-6 X 5-0 SH)			
	MINIMUM NET OPENING WIDTH 20"			
	MINIMUM NET OPENING HEIGHT 24"			
	MAXIMUM SILL HEIGHT 44"			

Remove Head Wasting
 150 CFM Minimum
 Vent Range Hood
 directly to the exterior.

Vent Bedrooms Laundry Room
 Bathrooms 80 CFM from Vents
 Kitchen 100 CFM from Vents
 Living Room 1.5 Sone
 All Units shall be equipped with
 laundry room 50 CFM from Vents.
 NOTE:
 Fan use ceiling exhaust duct
 with an exterior exhaust duct
 vented to the exterior.
 NOTE:
 Vents shall be
 strapped to the structure
 at upper & lower 1/3 of tank.

ELECTRICAL LAYOUT
 The electrical details shown
 are for information only.
 All electrical wiring/outlets/switches
 and all other electrical components
 shall be installed in accordance
 with the applicable electrical code
 by a licensed electrical contractor.

- CEILING LIGHT FIXTURE - LED
- CEILING LIGHT FIXTURE - LED
- HALLWAYS - CLOSETS
- FAN - LIGHT BATHROOMS/LAUNDRY AREA
- WEATHERPROOF EXTERIOR OUTLET
- GFI OUTLET
- OUTLET 200V
- SMOKE / CO DETECTOR
- WALL SWITCH
- SWITCH 3-WAY
- STARWELL ILLUMINATION
- WALL SCONCES
- 3-WAY SWITCHES TOP & BOTTOM
- CEILING LIGHT FIXTURE - LED
- SWITCHED OUTLET UNDER SINK
- FOR GARBAGE DISPOSAL

BONN DESIGN
 David Bonn, Principal
 bonndesign@yahoo.com
 971.203.3633

Orange Sploit LLC
 4751 NE Going St
 Portland, OR 97218
 EII Spevak@aracnet.com
 503.422.2607

PROJECT:
 CULLY GREEN
 4736, 4752 NE GOING ST.
 and 4540 NE 47th AVE
 PORTLAND, OREGON 97218

REVISIONS	
#	DESCRIPTION
1	24 JUN 2018 Revision e

DATE 3 OCT 11
 SCALE 1/4" = 1'-0"
 DRAWN BY DJB

2N - 2N
 BUILDING E
 ELEVATIONS
 SIDES

A 4.4

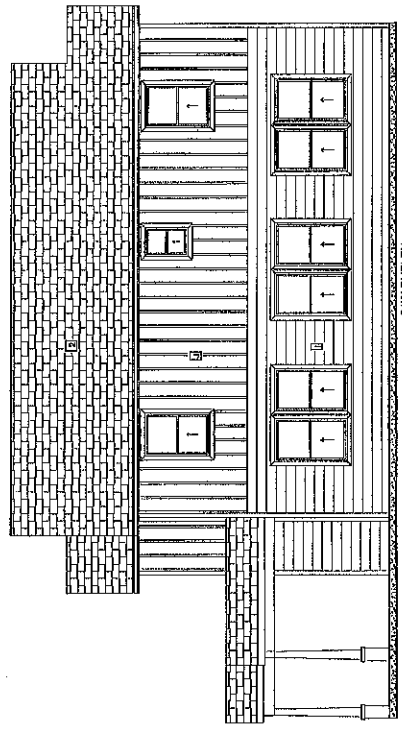
ROOF PLAN NOTES - KEY

- BEARING WALL BELOW
- COMPOSITE SHINGLE ROOF
- ROOF RIDGELINE
- GABLE ROOF
- SHED ROOF
- NO ROOF PENETRATIONS WITHIN 4 FT FROM ASSUMED PROPERTY LINE
- ASSUMED PROPERTY LINE

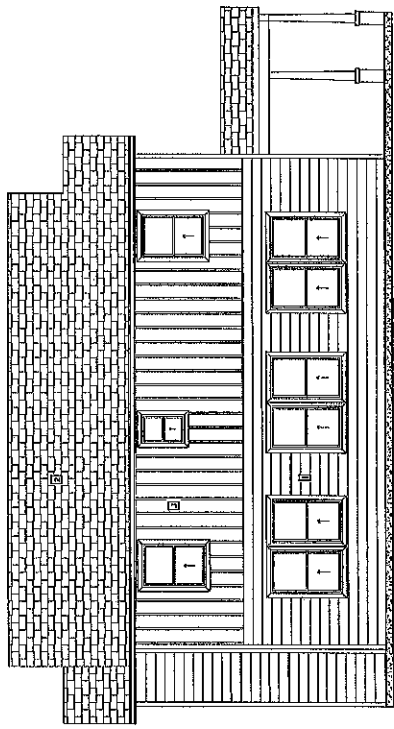
ELEVATION KEY NOTES

- 3 1/2" (MIN) WOOD TRIM
- 6x6 FT POST
- 2x8 WOOD FASCIA
- HEAVY TIMBER PORCH FRAMING
- METAL GUTTER - PAINTED
- 4x4 FT POST
- COMPOSITE SHINGLE BUMP-OUT ROOF
- WOOD BELLY BAND
- HORIZONTAL CEMENTITIOUS SIDING
- BOARD AND BATT SIDING
- CONCRETE PORCH SLAB
- ADDRESS NUMBER

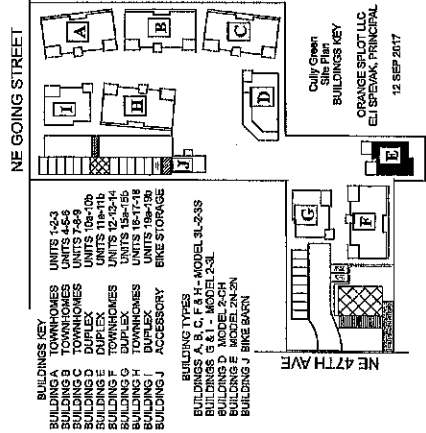
ADDRESS SHALL CONTRAST WITH BACKGROUND COLOR, 4" HIGH MIN. MINIMUM STROKE WIDTH 1/2"



31W DUPLEX
 ELEVATION RIGHT OF FRONT



31W DUPLEX
 ELEVATION LEFT OF FRONT



BONN DESIGN
David Bonn, Principal
bonndesign@yahoo.com
971.203.3633

Orange Sploit LLC
4751 NE Going St
Portland, OR 97218
EJ Sprevak@aracnet.com
503.422.2607

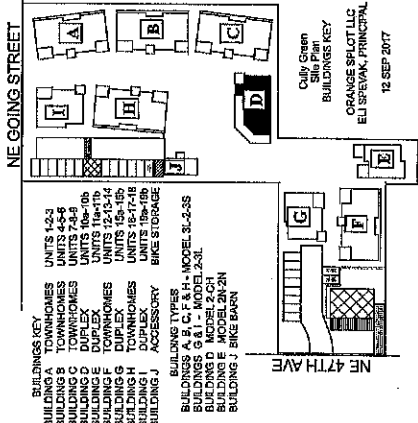
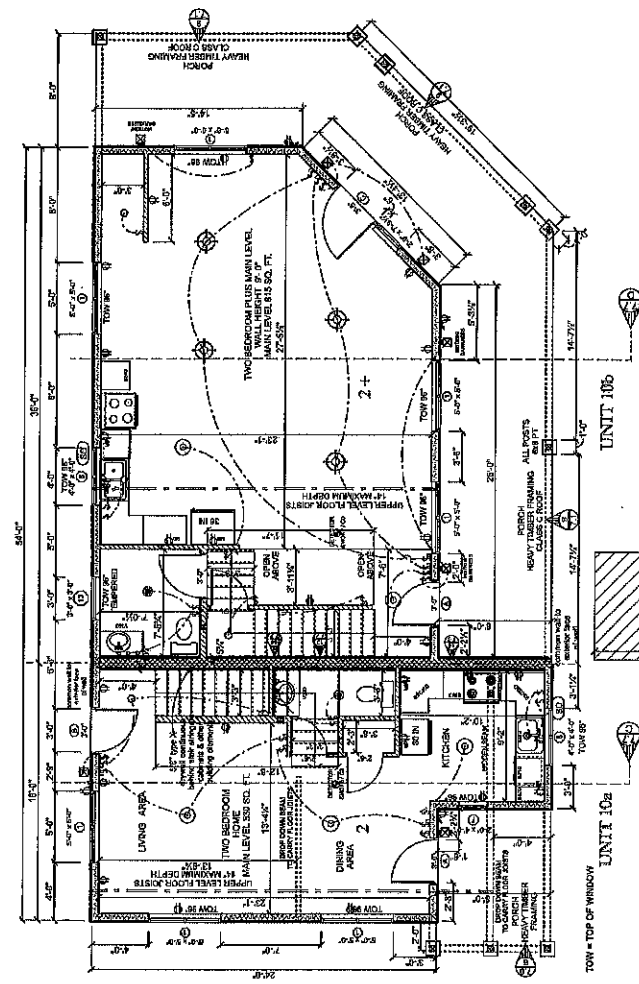
PROJECT:
CULLY GREEN
4736, 4752 NE GOING ST.
and 4540 NE 47th AVE
PORTLAND, OREGON 97218

REVISIONS		
#	DATE	DESCRIPTION
1	1 MAR 2018	REV/A
2	3 APR 2018	Revision b
3	2 MAY 2018	Revision c
4	9 MAY 2018	Revision d
5	26 JUN 2018	Revision e

DATE 25 OCT 11
SCALE 1/4" = 1' - 0"
DRAWN BY DJB

2 - 2+
BUILDING D
MAIN LEVEL

A 5.0



BUILDING 2
2 - 2+
Residential Use Only
Not for Common Use

MARK LEVEL	UNIT	QTY	EGRESS	TRAP/PLANT	1
2-2+	5-0 X 5-0 DOUBLE UNIT - SINGLE HUNG	7	Y	Y	13
2-2+	3-0 X 3-0 SINGLE UNIT - SINGLE HUNG	1	Y	Y	6
2-2+	4-0 X 4-0 DOUBLE UNIT - SINGLE HUNG	2	Y	Y	18
2-2+	2-0 X 4-0 SINGLE UNIT - SINGLE HUNG	1	Y	Y	6
2-2+	ENTRY DOOR 5-6 WITH SEDELITE & TRANSOM	1	Y	Y	1
2-2+	ENTRY DOOR 5-0 WITH 14" TRANSOM	2	Y	Y	1
2-2+	REAR DOOR 3-0 WITH 14" TRANSOM	1	Y	Y	1
2-2+	UPPER LEVEL	11	Y	Y	1
2-2+	5-0 X 5-0 DOUBLE UNIT - SINGLE HUNG	4	Y	Y	14
2-2+	3-0 X 3-0 SINGLE UNIT - SINGLE HUNG	1	Y	Y	6
2-2+	3-0 X 5-0 SINGLE UNIT - SINGLE HUNG	1	Y	Y	13
2-2+	3-0 X 3-0 TRIPLE UNIT - CASEMENT	1	Y	Y	1
2-2+	5-0 X 3-0 SINGLE UNIT - SINGLE HUNG	1	Y	Y	13
2-2+	3-0 X 4-8 SINGLE UNIT - FIXED	1	Y	Y	17
2-2+	TOTAL WINDOWS	13			
2-2+	NET LEAF AREA 57 SQUARE FEET				
2-2+	GLAZING NET OPENING WIDTH 20'				
2-2+	MINIMUM NET OPENING HEIGHT 20'				
2-2+	MAXIMUM SILL HEIGHT 44"				

DRAWING KEY

- 5 FT TUBESHOWER COMBO
- BATH LAVATORY
- MINI WALL LAVATORY
- SHOWER UNIT 36" x 36"
- TOILET
- DISHWASHER - BUILT IN
- ELECTRIC RANGE - 30"
- REFRIGERATOR
- STACK WASHER/DRYER - FUTURE
- KITCHEN SINK - SINGLE BOWL
- ELECTRIC WATER HEATER
- ATTIC ACCESS
- ELECTRICAL PANEL BOX
- CADET WALL HEATER-WALL THERMOSTAT
- EXHAUST FAN
- SMOKE - CARBON DIOXIDE DETECTOR
- RADON VENT PIPE

Range Hood Venting
150 CFM Minimum.
Vent Range Hood directly to the exterior.

Vent Bathrooms / Laundry Room
to the exterior.
Bathroom 80 CFM Fan Min.
Less than 1.5 Sone.
Timer on upstairs bath fan to provide required ventilation.
Laundry Room 50 CFM Fan Min.

NOTE:
Fan not required for Laundry with an electric clothes dryer vented to the exterior.
NOTE:
Water heaters shall be strapped to the structure at upper & lower 1/3 of tank.

- ELECTRICAL LAYOUT
The electrical details shown are for information only. All electrical work shall be done in accordance with the applicable electrical code and all other electrical requirements shall be installed in accordance with the applicable electrical code by a licensed electrical contractor.
- CEILING LIGHT FIXTURE - LED
- HALLWAYS - CLOSETS
- FAN - LIGHT BATHROOMS/LAUNDRY AREA
- WEATHERPROOF EXTERIOR OUTLET
- GFI OUTLET
- OUTLET 220V
- SMOKE / CO DETECTOR
- WALL SWITCH
- SWITCH 3-WAY
- EXTERIOR LIGHT
- STARWELL ILLUMINATION
- ALL SMOKE/CO DETECTORS
- 3-WAY SWITCHES TOP & BOTTOM
- CEILING LIGHT FIXTURE - LED
- SWITCHED OUTLET UNDER SINK FOR GARBAGE DISPOSAL

BONN DESIGN
 David Bonn, Principal
 bonndesign@yahoo.com
 971.203.3633

Orange Sploit LLC
 4751 NE Going St
 Portland, OR 97218
 Eli Spevak@orange.net
 503.422.2607

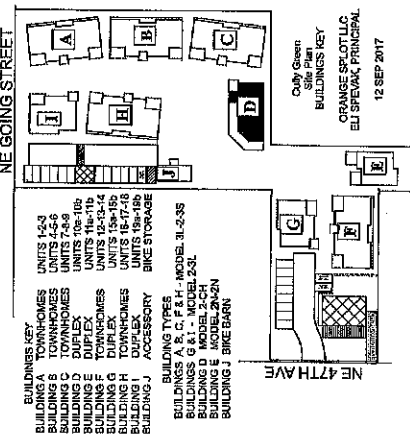
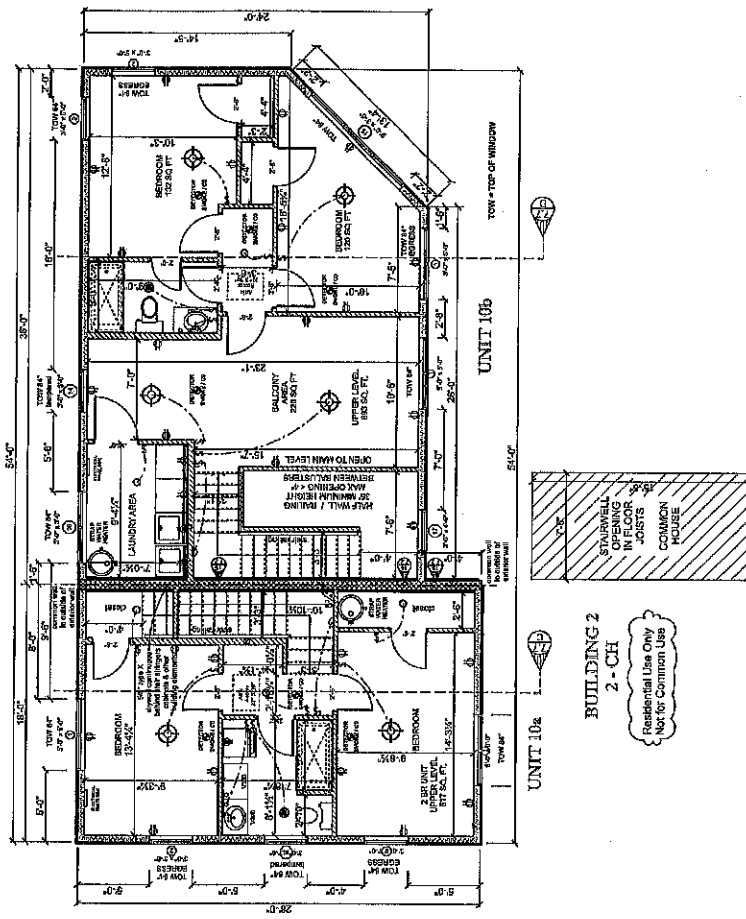
PROJECT:
 CULLY GREEN
 4736, 4752 NE GOING ST.
 and 4540 NE 47th AVE
 PORTLAND, OREGON 97218

REVISIONS	
DATE	DESCRIPTION
1 MAR 2018	REVA
4 APR 2018	Revision b
1 MAY 2018	Revision c
9 MAY 2018	Revision d
26 JUN 2018	Revision e

DATE 23 OCT 11
 SCALE 1/4" = 1' - 0"
 DRAWN BY DJB

2 - 2+
 UPPER LEVEL

A 5.1



MAIN LEVEL UNIT	QTY	EGRESS	TEMPD	PLAN ID
5-0 X 5-0 DOUBLE UNIT - SINGLE HUNG	7	Y		1
3-0 X 3-0 SINGLE UNIT - SINGLE HUNG	1	Y		13
4-0 X 4-0 DOUBLE UNIT - SINGLE HUNG	2			B
2-0 X 4-0 SINGLE UNIT - SINGLE HUNG	1			18
ENTRY DOOR 3-6 WITH SIDELITE & TRANSOM	1			C
ENTRY DOOR 5-0 WITH 14" TRANSOM	2			A
REAR DOOR HALF LITE WITH 14" TRANSOM	1			B
TOTAL WINDOWS	11			
UPPER LEVEL				
5-0 X 5-0 DOUBLE UNIT - SINGLE HUNG	4	Y		1
3-0 X 3-0 SINGLE UNIT - SINGLE HUNG	4	Y		2
3-0 X 3-0 SINGLE UNIT - SINGLE HUNG	1	Y		14
3-0 X 3-0 TRIPLE UNIT - CASSEMENT	1	Y		15
3-0 X 3-0 SINGLE UNIT - SINGLE HUNG	1	Y		16
3-0 X 4-6 SINGLE UNIT - FIXED	1			17
TOTAL WINDOWS	13			
* MEETS THE STANDARD FOR EGRESS				
NET FREE AREA 6.7 SQUARE FEET				
28.5" X 20" FOR 2-6 X 5-0 SH				
MINIMUM NET OPENING WIDTH 20"				
MINIMUM NET OPENING HEIGHT 24"				
MAXIMUM SILL HEIGHT 44"				

- DRAWING KEY**
- 5 FT TUB/SHOWER COMBO
 - BATH LAVATORY
 - MINI WALL LAVATORY
 - SHOWER UNIT 35" X 35"
 - TOILET
 - DISHWASHER - BUILT IN
 - ELECTRIC RANGE - 30"
 - REFRIGERATOR
 - STACK WASHER/DRYER - FUTURE
 - KITCHEN SINK - SINGLE BOWL
 - ELECTRIC WATER HEATER
 - ATTIC ACCESS
 - ELECTRICAL PANEL BOX
 - CADET WALL HEATER-WALL THERMOSTAT
 - EXHAUST FAN
 - SMOKE - CARBON DIOXIDE DETECTOR
 - RADON VENT PIPE

ELECTRICAL LAYOUT
 The electrical layout is shown as an information only.
 All electrical wiring/outlets/switches and all other electrical components shall be installed in accordance with the applicable electrical code by a licensed electrical contractor.

- CEILING LIGHT FIXTURE - LED
- CEILING LIGHT FIXTURE - LED HALLWAYS - CLOSETS
- FAN - LIGHT BATHROOM/LAUNDRY AREA
- WEATHERPROOF EXTERIOR OUTLET
- GFI OUTLET
- OUTLET 220V
- SMOKE/CO DETECTOR
- WALL SWITCH
- SWITCH 3 WAY
- EXTERIOR LIGHT
- STARBUCK ILLUMINATION
- WALL SWITCHES(S)
- 3-WAY SWITCHES TOP & BOTTOM
- CEILING LIGHT FIXTURE - LED
- SWITCHED OUTLET UNDER SINK FOR GARBAGE DISPOSAL

Range Hood Venting
 150 CFM Minimum.
 Vent Range Hood directly to the exterior.

Vent Bathrooms / Laundry Room
 to the exterior.
 Bathroom 80 CFM Fan Min.
 Less than 1.5 Sone.
 Timer on upstairs bath fan to provide required ventilation.
 Laundry Room 50 CFM Fan Min.
 NOTE:
 Fan not required for Laundry with an electric clothes dryer vented to the exterior.
 NOTE:
 Water heaters shall be strapped to the structure at upper & lower 1/3 of tank.

BUILDING 2
 2 - CH
 Residential Use Only
 Not for Common Use

Cully Green
 Site Plan
 BUILDINGS KEY
 ORANGE SPOLOT LLC
 ELI SPEVAK, PRINCIPAL
 12 SEP 2017

BONN DESIGN
 David Bonin, Principal
 bonndesign@yahoo.com
 971.203.3633

Orange Sploit LLC
 4751 NE Going St
 Portland, OR 97218
 Eli Spevak@orange.net.com
 503.422.2607

PROJECT:
 CULLY GREEN
 4736, 4732, NE GOING ST.
 and 4540 NE 47th AVE
 PORTLAND, OREGON 97218

REVISIONS	
DATE	DESCRIPTION
18 FEB 2018	Revision A
2 MAY 2018	Revision c
27 JUN 2018	Revision e

DATE 9 OCT 17
 SCALE 1/4" = 1'-0"
 DRAWN BY DJB

2 - 2+
 BUILDING D
 ELEVATIONS
 SIDES

A 5.4

ELEVATION KEY NOTES

- A. 3 1/2" (MIN) WOOD TRIM
 - B. 6x6 PT POST
 - C. 2x4 JOISTS
 - D. HEAVY DUTY PORCH FRAMING
 - E. METAL GUTTER - PAINTED
 - F. 4x4 PT POST
 - G. COMPOSITE SHINGLE BUMP-OUT ROOF
 - H. WOOD BELLY BAND
 - I. HORIZONTAL CEMENTITIOUS SIDING
 - J. BOARD AND BATTEN SIDING
 - K. SHAKE STYLE SIDING
 - L. CONCRETE PORCH SLAB
 - M. ADDRESS NUMBER
- ADDRESS SHALL CONTRAST WITH BACKGROUND COLOR. 4" HIGH MIN. MINIMUM STROKE WIDTH 1/2"

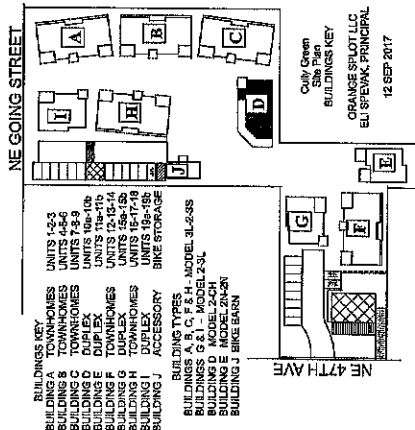
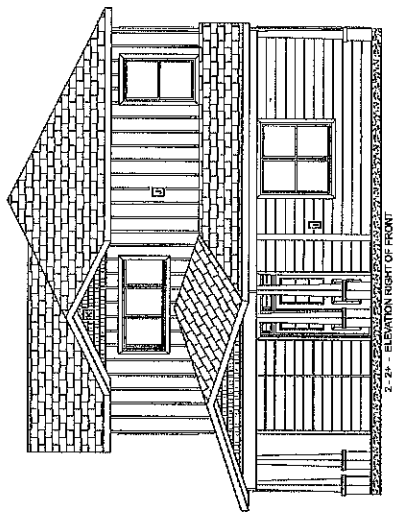
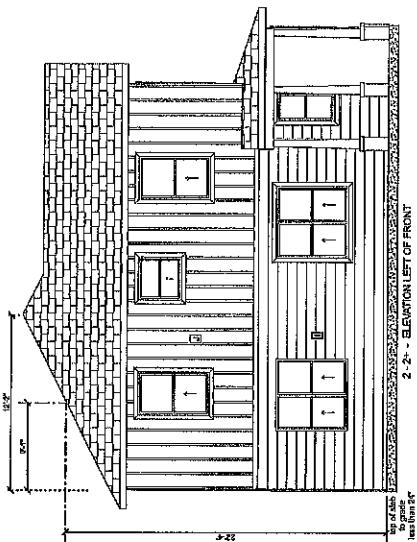


EXHIBIT B

Approximate Unit Square Footages, Common Element Allocation, and Estimated Monthly Assessments

{00894998;5}

EXHIBIT B – CONDOMINIUM DISCLOSURE STATEMENT FOR CULLY GREEN
CONDOMINIUM

HOA INCOME

	Approximate Square Footage	Percent Ownership of Common Elements	Monthly HOA Dues Based on % Ownership	Monthly HOA Dues for Water/Sewer	Total Monthly HOA Dues	Total Annual HOA Dues
<u>Living Unit</u>						
1	1,574	5.063%	131	52	183	2,197
2	1,012	3.255%	84	52	136	1,636
3	1,393	4.481%	116	52	168	2,016
4	1,574	5.063%	131	52	183	2,197
5	1,012	3.255%	84	52	136	1,636
6	1,393	4.481%	116	52	168	2,016
7	1,574	5.063%	131	52	183	2,197
8	1,012	3.255%	84	52	136	1,636
9	1,393	4.481%	116	52	168	2,016
10	1,037	3.336%	86	52	138	1,661
11	1,040	3.345%	87	52	139	1,664
12	1,040	3.345%	87	52	139	1,664
13	1,574	5.063%	131	52	183	2,197
14	1,012	3.255%	84	52	136	1,636
15	1,393	4.481%	116	52	168	2,016
17	992	3.191%	83	52	135	1,616
18	1,574	5.063%	131	52	183	2,197
19	1,574	5.063%	131	52	183	2,197
20	1,012	3.255%	84	52	136	1,636
21	1,393	4.481%	116	52	168	2,016
22	992	3.191%	83	52	135	1,616
23	1,574	5.063%	131	52	183	2,197
16	1,700	5.468%	141	-	141	1,698
<u>Parking Unit</u>						
1	162	0.200%	5		5	62
2	162	0.200%	5		5	62
3	162	0.200%	5		5	62
4	162	0.200%	5		5	62
5	162	0.200%	5		5	62
6	162	0.200%	5		5	62
7	162	0.200%	5		5	62
8	162	0.200%	5		5	62
9	162	0.200%	5		5	62
10	162	0.200%	5		5	62
11	162	0.200%	5		5	62
12	162	0.200%	5		5	62
13	162	0.200%	5		5	62
14	162	0.200%	5		5	62
15	162	0.200%	5		5	62
16	162	0.200%	5		5	62
17	162	0.200%	5		5	62
18	162	0.200%	5		5	62
19	162	0.200%	5		5	62
20	162	0.200%	5		5	62
Total HOA income			2,587	1,146	3,733	44,796

{00894998;5}

**EXHIBIT B – CONDOMINIUM DISCLOSURE STATEMENT FOR CULLY GREEN
CONDOMINIUM**

HOA EXPENSES

	Monthly HOA Expense	Annual HOA Expense
Administrative		
Annual corporation report filing	8	100
Bank Fees	4	50
Insurance	750	9,000
Office supplies / postage / printing	8	100
Bookkeeping, finance mgmt	400	4,800
Reserve study update	33	400
Tax return preparation	21	250
Maintenance & Repairs		
Common House Maintenance	125	1,500
Bicycle Facilities Maintenance	33	400
Landscaping & Grounds	150	1,800
General Maintenance	192	2,300
Utilities		
Electricity - common	138	1,650
Trash/recycling	200	2,400
Common Water/Sewer	42	500
Unit 1-19 Water/Sewer	1,146	13,750
Total Operating/Maintenance	3,250	39,000
Replacement Reserve	483	5,796
Total HOA Expenses	3,733	44,796

The address for each unit will be: ___ NE Going St./ ___ NE 47th Ave., Unit #__.

NOTICE: The square footage areas stated in this Disclosure are based on the boundaries of the units as described in the Declaration and may vary from the area of units calculated for other purposes.

NOTICE TO PROSPECTIVE PURCHASERS: The projection of the budget of the Association of Unit Owners for the operation and maintenance and other common expenses of the Condominium is only an estimate, prepared with due care. Actual expenses incurred by the Association may vary from those estimated in the projected budget. Property taxes for each unit are not included in this estimate.

{00894998;5}

EXHIBIT C-1

Reserve Study

This Reserve Study identifies the components all or part of which will normally require major maintenance, repair or replacement in more than one and less than thirty years and the cost of repair or replacement of each at recommended intervals.

Limitations and Assumptions:

- The information provided by this Reserve Study is effective for one year from the completion date of the project. An annual review and update of this Reserve Study is required to adjust known cost changes and to maintain accuracy.
- The scope of the Reserve Study is expressly limited to the components included.
- The remaining useful life estimates of the Reserve Study assume normal weather conditions and do not factor in damage by flood, wind, storm, earthquake or other insurable events. The useful life estimates assume proper construction, installation, design, and adequate preventative maintenance. Improper construction, installation, design or failure to maintain will lead to shortened useful lives.
- The cost estimates of the Reserve Study are based on current pricing for similar installations and materials and/or based in actual costs paid by contractor on this project. Future costs are subject to change according to supply and demand, material costs, effects of inflation and other forces.

Replacement reserve fund:

The amounts indicated above under "reserves" will be collected on a monthly basis as part of the homeowner's association dues to prepare for estimated replacements and repairs of the following common elements:

	Replacement Cost	Useful Life	% Life Expired	Years Remaining	Value Remaining	Cost/yr
Appliances, Water Heater, HVAC						
Common unit range	1,000	15	0%	15	1,000	66.67
Common unit microhood	400	9	0%	9	400	44.44
Common unit fridge	700	13	0%	13	700	53.85
Common unit dishwasher	600	9	0%	9	600	66.67
Common bldg hot water heater	500	11	0%	11	500	45.45
Common bldg washer/dryers	3,200 [Ⓢ]	15	0%	15	3,200	213.33
Common unit sinks	800	12	0%	12	800	66.67
Common unit shower	1,000	20	0%	20	1,000	50.00
Common bldg HVAC	6,500	20	0%	20	6,500	325.00
Interiors						
Common bldg flooring - marmoleum 170 SF	1,190 [Ⓢ]	20	0%	20	1,190	59.50
Common bldg flooring - Wool carpet 630 SF	5,607 [Ⓢ]	20	0%	20	5,607	280.35
Common bldg flooring - Luxury Vinyl Tiles 770 SF	6,545	20	0%	20	6,545	327.25
Common bldg interior painting	3,000	8	0%	8	3,000	375.00
Smoke detectors & batteries	240	10	0%	10	240	24.00
Bike rack repair (20% of full replacement cost)	2,418 [Ⓢ]	20	0%	20	2,418	120.90
Exteriors						
Common bldg roof	7,500 [Ⓢ]	40	0%	40	7,500	187.50
Bike Barn roof	2,815 [Ⓢ]	40	0%	40	2,815	70.38
Trash enclosure roofs	1,510 [Ⓢ]	40	0%	40	1,510	37.75
Common bldg gutters/downspouts	1,215 [Ⓢ]	25	0%	25	1,215	48.60
Common bldg siding repair	4,000	25	0%	25	4,000	160.00
Common bldg ext. painting	5,747 [Ⓢ]	25	0%	25	5,747	229.88
Common bldg & bike room ext. doors (3)	1,500 [Ⓢ]	30	0%	30	1,500	50.00
Exterior path lighting fixtures (wall-mount and bollard)	4,650 [Ⓢ]	20	0%	20	4,650	232.50
Entry trellis	5,000	20	0%	20	5,000	250.00
Paver driveway periodic repair	6,000	15	0%	15	6,000	400.00
Re-treating ext. wood surfaces (posts, recycling area...)	800	3	0%	3	800	266.67
Perimeter fencing replacement, recycling area	9,900	15	0%	15	9,900	660.00
USPS Mailbox	2,560 [Ⓢ]	20	0%	20	2,560	128.00
Tree pruning	1,200	7	0%	7	1,200	171.43

Capital Account

Starting Balance ->	-
Ending Balance (at 30 yrs) ->	33,958
Min. Balance ->	5,796
Max. Balance ->	60,865
Avg. Balance ->	39,363

Assumptions:

Annual Reserve deposit	5,796	23 units, \$20/unit/month, increasing at 3%/yr
Savings Interest rate	1.0%	
Expense inflation rate	3.0%	

Notes:

All costs shown above are in 2019 dollars
Projections assume bank interest on replacement reserve account as shown in the Assumptions above
Projections assume increasing construction costs at an inflation rate as shown in the Assumptions above
Projections assume annual deposits to the Reserve Account increase annually with the expense inflation rate

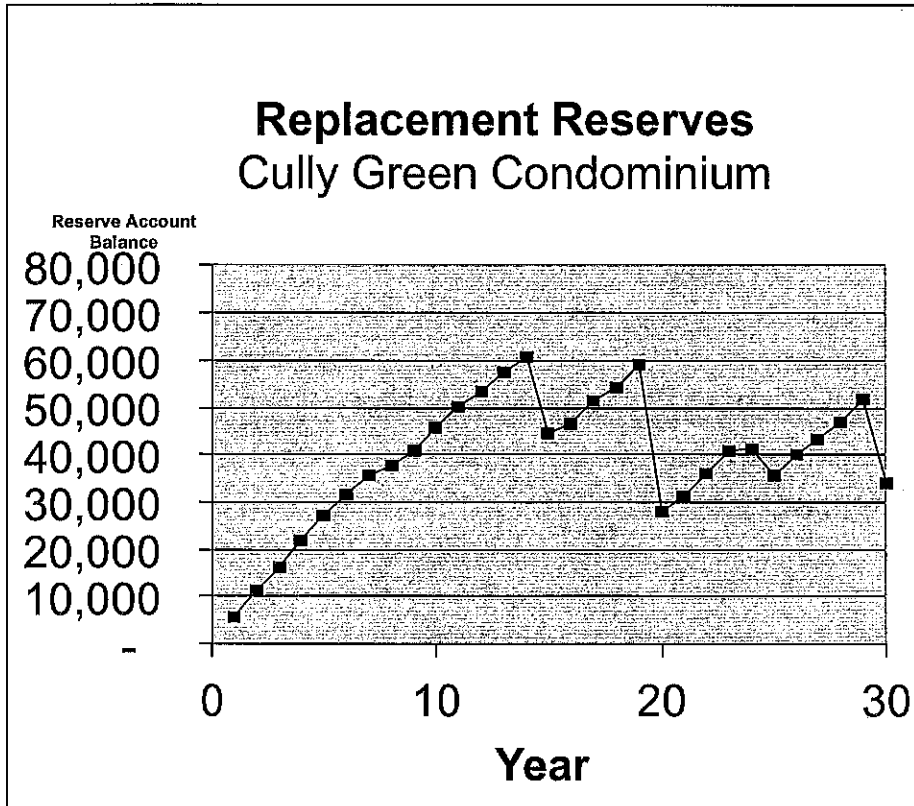


EXHIBIT C-2

Maintenance Plan

**- Maintenance Plan -
Cully Green Condominium**

The proper care and maintenance of common elements have been entrusted to the homeowner association. The key to any effective Maintenance Plan is consistency and expertise. The goal of this Maintenance Plan is to provide general information and direction on how to maintain those assets for the long-term benefit of unit owners. While several specific items are included, this list is not exhaustive and some issues may develop over time, which should be added to the Plan.

Many building and grounds components require specific maintenance to ensure their proper function. Many of the tasks are suitable only to trained professionals with a thorough understanding of the systems. It is recommended that only licensed, bonded and insured contractors with the training, knowledge, tools and equipment to handle the maintenance of those systems or components be used to ensure highest service quality.

The Maintenance Plan is divided into two parts: **Annual Preventative Maintenance** and **Reserve Repairs & Replacements**. The first deals with annual tasks while the second deals with cyclical tasks. Close attention to both are required to achieve the desired results.

Annual Preventative Maintenance

The following tasks should be performed according to a regular and adequate schedule as preventative maintenance.

Exterior

General Repairs

The operating budget provides funds to handle various minor repairs such as paint touchup, re-caulking, minor electrical and plumbing, and roof repairs. Various non-emergency repair requests should be grouped together so work can be handled cost effectively.

Exterior Lights

For appearance and security, all exterior light fixtures should be in good working order. Repair fixtures and replace bulbs as needed.

Composition Roof & Gutter Maintenance

To ensure roofs last their normal useful life:

1. The roofs must be kept clean of dirt, debris, moss and algae. As needed apply moss killer and clear moss away when it is dead and dry. Missing shingles and flashing should be replaced to prevent water intrusion.

{00894998;5}

2. Keeping scuppers, gutters and downspouts unobstructed is extremely important to prevent damage to the paint, siding and landscaping. Clear gutters and downspouts at least twice per year, in the spring and fall.

Siding and Trim - Maintenance

All siding and trim must be inspected, repaired and caulked as necessary at least once a year, generally before winter rains to ensure they are watertight.

Water Intrusion Repairs

A knowledgeable building contractor should inspect the buildings for sources of potential water intrusion, like missing flashing, failed caulking or negative drainage which directs water toward the building. Take appropriate corrective action as indicated.

Exterior Painting - Maintenance

Annually inspect exterior siding, trim and painted metalwork (including stair/porch railings) for surface deterioration that may lead to rot or rust. Prep surfaces, prime and re-paint as necessary.

Landscape Maintenance

Landscaping is an extremely important aspect of livability, sustainability (healthy and edible plantings), and market value. Trees should be pruned annually to shape growth, remove dead branches, and prevent contact with structures and with each other. All landscaping should be cut back annually to prevent contact with buildings. Soil around foundation walls should be re-graded annually to preserve at least 6 vertical inches of soil-siding separation. Trees should be watered regularly during at least their first two years following installation.

Entrance Sign and Trellis

Annually inspect entrance sign for wear. Clear seal and/or repaint against the weather as necessary.

Perimeter and Interior Cedar Fencing

Inspect wood fencing annually and repair any damaged boards or supports as required.

Interior

Common House Facilities

Monitor common unit plumbing fixtures (kitchen, sink, toilet, tub/shower) for leaks. Repair promptly as necessary.

Common House – Hot Water Heater Flush

The hot water heater should be flushed every year to remove sediment.

1. Attach hose to drain valve at bottom of tank and run hose to floor drain or building exterior
2. Open valve to full and let water run until clear.
3. Close valve and remove hose.

{00894998;5}

Common House Appliances

Monitor common unit appliances (range, chest freezer, refrigerator, washer/dryer) for safe operation. Repair promptly as necessary.

Common House heating system

Clean filters for the ductless mini-split heater in the Common House as recommended by the manufacturer.

Wood flooring (common unit living/dining/hallway)

Apply sticky pads to the feet of all heavy furniture in the common unit to avoid scratching the floor finish. Consider screening and refinishing floors every 3-5 years to maintain a fresh appearance.

Linoleum flooring (common unit kitchen and bathrooms)

Wet-mop monthly to clean and disinfect surface. Use as little water as possible. Scrub and re-apply 2 coats of linoleum sealer coat every 2-3 years.

Reserve Repairs & Replacements**Treework**

Have all trees inspected by a certified arborist. Perform corrective pruning as needed to ensure maximum health and beauty of trees and avoid potential damage to nearby buildings.

Composition Roof Replacement

When due for replacement, remove and replace existing shingles with comparable quality roofing according to manufacturer specification. Replace all flashing. Coordinate with replacement of gutters and downspouts.

Gutter and Downspout Replacement

Coordinate with Composition Roof Replacement. Remove and replace with comparable material and design.

Siding and Trim - Repair

Inspect all siding for loose trim, bad boards, penetrations, and non-performing flashing. Re-nail, patch or remove-and-replace as needed. Coordinate with exterior painting.

Exterior Painting

Power wash all surfaces to remove peeling paint, moss, algae, dirt and other contaminants. Apply mildewcide to areas with mildew. Scrape or brush loose paint and prime all bare spots with primer. Remove and/or provide adequate protection for light fixtures and other hardware. Mask with tape and paper, cover with plastic tarp or otherwise protect windows, other unpainted surfaces, landscaping and personal property from paint drips and/or overspray. Ensure surface to be painted is dry and free of dirt, dust, oils or other contaminants which will prevent adhesion of the coating. Apply paint or stain by brush, spray and/or back-roll in accordance with manufacturer's guidelines, including appropriate weather conditions. Re-seal cedar exterior trellises every two to three years to maintain the

{00894998;5}

**EXHIBIT C-2 --CONDOMINIUM DISCLOSURE STATEMENT FOR CULLY GREEN
CONDOMINIUM**

protective coat and fresh appearance. Spray high quality paint or sealer product as applies on exterior doors. Clean up all work related debris and dispose of off-site.

Interior Painting

Before repainting, clean walls and ceilings with TSP or natural cleaner. Protect windows, appliances, electrical and plumbing fixtures, cabinets, and personal property. Perform drywall repair as necessary, sand and prime. Brush, spray and back-roll all painted and stained surfaces with no-VOC paint and sealer in accordance with manufacturer's guidelines.

Common House Appliances and HVAC system

When cost of maintenance exceeds cost of replacement or when significantly more efficient models become available, replace common appliances and HVAC system with new ones of equal or greater quality and efficiency.

Paving

Work with a licensed contractor to remove and replace top layer of asphalt paving in driveway areas once existing payment. Coordinate with re-stripping and numbering of parking spaces.

Exterior Signage

Repair and replace exterior signage and pavement/curb marking as necessary to comply with ADA, fire department, and other city requirements.

EXHIBIT D

Existing Home Condition

4540 NE 47th Ave

<u>Building Component</u>	<u>Type/Material</u>	<u>Approximate Date of Construction</u>	<u>Present Condition</u>	<u>Estimated Remaining Useful Life</u>
Foundation	Concrete	1947	Good	50 years
Framing	2x4 wood frame	1947	Good	50 years
Roof	Standing Seam metal	2015	Good	45 years
Plumbing	ABS/ Pex	2012	Good	50 years
Electrical	100 Amp Service	2010	Good	50 years
Heat	Gas Furnace	2010	Good	20 years
Water Heater	Electric Tank	1992	Operational	2-3 years
Siding	Cedar	Unknown	Good	15-20 years
Concrete Sidewalks/ Driveway	Concrete/Gravel	Unknown	Serviceable but Worn	To be repaired/replaced during construction
Windows	Single Pane wood with some vinyl	Unknown	Operational but worn	10-15 years

NOTE: Developer has had this statement prepared based upon inspections and Developer's expertise in the construction industry. Although this document has been prepared with due care, no warranty should be inferred.

{00894998;5}

RECEIPT FOR DISCLOSURE STATEMENT

FOR

**CULLY GREEN CONDOMINIUM
(A PROPOSED OREGON CONDOMINIUM)
FILE NO. CO-26-0519-1322**

ADOPTED AND ISSUED BY THE COMMISSIONER ON: AUGUST 6, 2019

NAME AND ADDRESS OF DECLARANT:

**CULLY GREEN LLC
4751 NE GOING ST.
PORTLAND OR 7218**

Oregon law requires that you as a prospective purchaser of a Condominium unit be given a copy of a disclosure statement adopted and issued by the Real Estate Commissioner not later than the date the unit sales agreement is fully executed by all parties.

DO NOT SIGN THIS RECEIPT UNTIL YOU HAVE RECEIVED A COPY OF THE DISCLOSURE STATEMENT.

The undersigned hereby acknowledges receipt of a copy of the Presale Disclosure Statement approved on August 6, 2019, consisting of 39 pages, not later than the date the unit sales agreement is fully executed by all parties.

The undersigned understands that the Disclosure Statement is not a recommendation or endorsement of the Condominium, but is for information only.

Dated this _____ day of _____, 20__.

Purchaser

Purchaser

**THE DECLARANT IS REQUIRED TO RETAIN THEIR COPY OF THIS RECEIPT
FOR THREE YEARS**

(PURCHASER'S COPY)

RECEIPT FOR DISCLOSURE STATEMENT

FOR

**CULLY GREEN CONDOMINIUM
(A PROPOSED OREGON CONDOMINIUM)
FILE NO. CO-26-0519-1322**

ADOPTED AND ISSUED BY THE COMMISSIONER ON: AUGUST 6, 2019

NAME AND ADDRESS OF DECLARANT:

**CULLY GREEN LLC
4751 NE GOING ST.
PORTLAND OR 7218**

Oregon law requires that you as a prospective purchaser of a Condominium unit be given a copy of a disclosure statement adopted and issued by the Real Estate Commissioner not later than the date the unit sales agreement is fully executed by all parties.

DO NOT SIGN THIS RECEIPT UNTIL YOU HAVE RECEIVED A COPY OF THE DISCLOSURE STATEMENT.

The undersigned hereby acknowledges receipt of a copy of the Presale Disclosure Statement approved on August 6, 2019, consisting of 39 pages, not later than the date the unit sales agreement is fully executed by all parties.

The undersigned understands that the Disclosure Statement is not a recommendation or endorsement of the Condominium, but is for information only.

Dated this ____ day of _____, 20__.

Purchaser

Purchaser

THE DECLARANT IS REQUIRED TO RETAIN THIS RECEIPT FOR THREE YEARS

(DECLARANT'S COPY)