



Peace Offering

BI-ANNUAL REPORT
SPRING 2022



PRINCE of PEACE
LUTHERAN CHURCH



“Don’t worry. It’s like riding a bike.”



PASTOR KARL FAY

Senior Pastor
pastorkarl@pop.church

Some of you know I love cycling. When I was younger, before I was able to drive a car, a bike was my primary mode of transportation and my ticket to freedom and seeing my friends. Now that I’m older, cycling isn’t so much transportation, but recreation and even conversation. I’m perfectly capable of getting out and biking on my own. That’s the approach with the most flexibility and freedom. The solitude is soul-fulfilling in its own way. Increasingly, though, I’m choosing to align my schedule and bike with friends. Do you know what I’ve found? I go more frequently, go farther and faster, and I have infinitely more fun all because I pedal with other people!

We’ve grown accustomed to how quickly things can change and how we constantly need to be flexible. We’ve become really practiced at being adaptive, making not only a plan B, but also plans C, D, E, and finally, maybe going with F. This ever-changing environment has us naturally narrowing our circles and reluctant to commit to much of anything or anyone. But God has given you specific gifts that are helpful for building up the church and rebuilding a world that is now opening after a pandemic!

We need you! The community needs us!

Therefore I want you to know that no one who is speaking by the Spirit of God says, “Jesus be cursed,” and no one can say, “Jesus is Lord,” except by the Holy Spirit. There are different kinds of gifts, but the same Spirit distributes them. There are different kinds of service, but the same Lord. There are different kinds of working, but in all of them and in everyone it is the same God at work. Now to each one the manifestation of the Spirit is given for the common good... Now you are the body of Christ, and each one of you is a part of it.
1 Corinthians 12:3-7, 27

Prince of Peace, I’m so thankful for you and I’m proud of how you’ve lived your Christian faith. None of us imagined how long this pandemic would last and none of us would have chosen it. You demonstrated, in many cases, uncommon kindness, patience, and resilience. You *put others first* and sacrificed your own rights and preferences for the sake of others and for the sake of unity! These are choices and ways of being in the world that serve us well, whether we’re navigating a pandemic or everyday life.

We need you! We need you to SHARE!

On the evening of that first day of the week, when the disciples were together, with the doors locked for fear of the Jewish leaders, Jesus came and stood among them and said, "Peace be with you!" After he said this, he showed them his hands and side. The disciples were overjoyed when they saw the Lord. Again Jesus said, "Peace be with you! As the Father has sent me, I am sending you." And with that he breathed on them and said, "Receive the Holy Spirit. If you forgive anyone's sins, their sins are forgiven; if you do not forgive them, they are not forgiven." John 20: 19-23 NIV

This is one of Jesus' first appearances to His disciples after He rose from the dead. It is also one of at least five different commissioning stories in the Gospels and Acts, and it forms the basis of our mission as a church:

We empower caring people to share Christ's peace in our busy communities.

Here are some things I noticed in this reading:

- Locks and doors don't mean anything to Jesus if He wants to be somewhere.
- Fear causes us to lock ourselves in and close ourselves off from others. Before they saw Jesus, the disciples were together in fear and going nowhere.
- Jesus' first word to them was peace. Shalom. Remarkable word, really. Shalom entails all this: spiritual, emotional, physical, intellectual, relational, financial, and vocational well-being. Restoration, forgiveness, wholeness, completeness. Peace within. Peace with God. Peace with people. Peace toward the world.
- "Peace be with you!" He showed them His hands and side. It really happened! He wasn't a ghost or hologram!
- The scars weren't wounds any longer. They were portals to wonder and worship.
- Recognizing Jesus through His scars created ecstatic joy in Jesus' friends!
- He said it again, "Peace be with you!" as if they needed to hear it more than once.
- He commissioned them!

How has your life changed over the past two years? Where have you seen God at work in you and the people around you? What is God saying to you about what's next? You'll read in this issue many ways our members have kept the faith and kept championing the community when it has not been easy.

We need you!

God's love is complete when we share it in community.

We need you!

We're all trying to figure out life beyond the pandemic! Let's figure it out together!

We need you!

As I write this, more than 4.5 million people have been displaced by the war in Ukraine, including more than two million children. Lord, have mercy. The world is beginning to discover life beyond the pandemic. Now the news is filled with the good and the bad: Ukraine, gas prices, inflation, the world opening up, the lifting of mask mandates, abuses of power, violence. Every single second there's change. But what doesn't change is:

The world needs Jesus!

The world needs the peace, the shalom, He breathes into the world through His body, the church!

We need you!

It takes a community to reach a community!

EVERYTHING takes a village. And EVERYONE needs a village.

Get into Word & worship!

Step up and serve!

Be a friend! Join a group or start a group!

We are STRONGER TOGETHER!

Church, remember this: We go more frequently, go farther and faster, and have infinitely more fun all because we do it together!

In this issue, you'll find heartwarming stories of service, friendship, and resilience we hope will inspire you! You'll also find many ways to use your gifts to connect with others. **How do you begin?** If you want to know how to start a group, or learn about POP groups to pray with, connect with others, or to serve in, ask any POP staff member for information. There are several options, new and newly re-opened, and you'll find many in this Peace Offering including Prime Timers, the Art Show, VBS, and Bible Studies.

The weather is warming, the world is re-opening. Look for where your God-given gifts will be the best served. Feel rusty and out of practice on many aspects of church and your life in Christ? Feel uncertain of your ability? **Don't worry, it's like riding a bike!**



WORSHIP

as a community



ALEX FALLS
Worship Arts Director
alex@pop.church

Christmas

This year POP celebrated lighter worship restrictions by bringing back the choir for the traditional Christmas services and by having an even bigger praise ensemble for the contemporary Christmas service. The contemporary service included many of our regular Praise Band talent, along with a brass section featuring my father and two musicians from the jazz band in which we both play. The choir returned with the now infamous "duck masks." These special masks were made in New

York by Broadway singers and are designed to not hinder singers while performing. The choir sang everyone's favorite Christmas hymns along with some new additions such as the beloved "Carol of the Bells." Speaking of bells...

Ringling Saints Return

The handbell choir has come back from hiatus with a new director! Vera Wisniewski has returned from retirement with a desire and a passion to direct the handbell choir and to mentor musicians who want to learn to play the handbells. The Ringing Saints' rehearsals have been going well, and the group had its premier performance on Palm Sunday. The group is accepting new members, and Vera

and I are working together to plan future performances.

Song Requests

Some excellent ideas come from POP members. Earlier this year Pastor Karl met with a member who has been watching our church services from home. They created and shared at list of older hymns they grew up singing to pass along to me. This was a great idea, and it inspired me to create a song request form through Planning Center. You may use this form to request both contemporary and traditional songs. There have already been many great recommendations, some of which were recently included in worship services. I enjoy this so much because requests allow me to learn about songs that members love and



has introduced me to some cool new songs I hadn't heard before. If you wish to request a song, you may do so online at bit.ly/sngreq, or find the link on your Church Center app.

Celtic Services

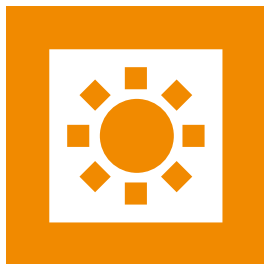
Whether you pronounce it "Seltic" (like the basketball team) or "Keltic," we all can agree that the Irish-themed services on March 19 and 20 were a success. Several outside musicians were hired for the special music. Many of you enjoyed the sounds of songs like *The Celtic Praise Song* and *The Green Fields of Erin*. POP plans to continue having these themed services scattered throughout the year.

We enjoyed both traditional and praise music at all Holy Week services – Maundy Thursday, Good

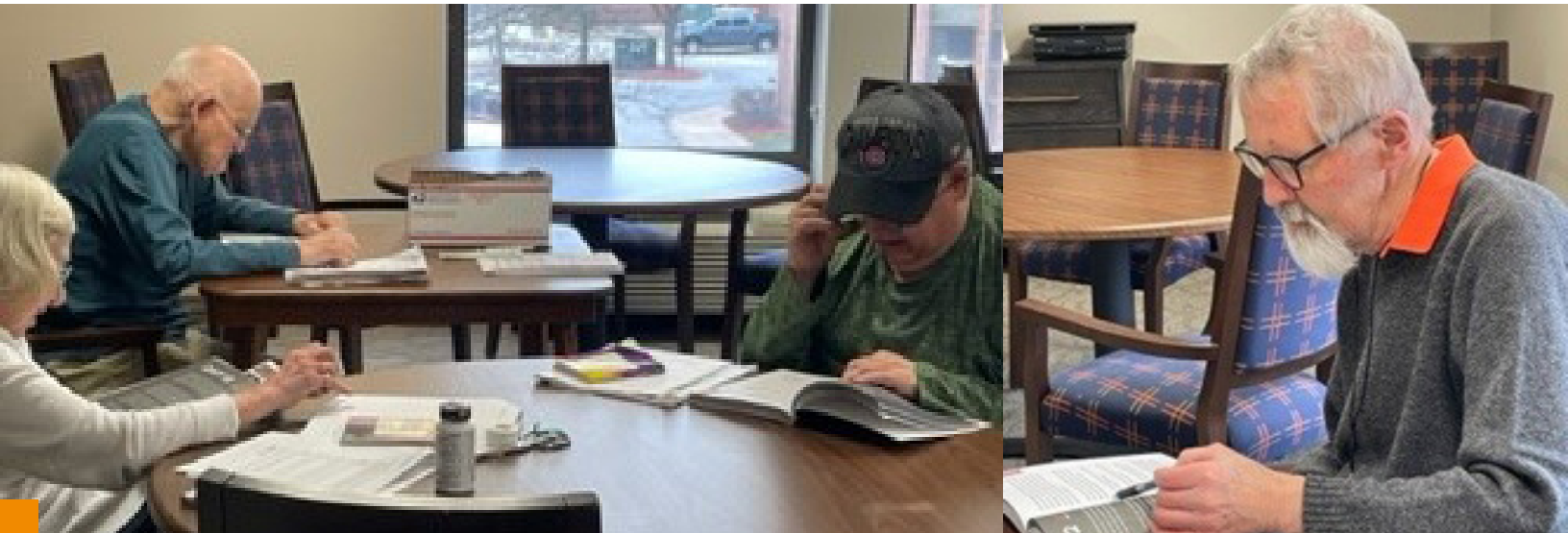
Friday, and Easter. And what a treat! "Up-Front" Holy Communion returned on Maundy Thursday. Prince of Peace now offers two ways to receive communion as individual kits will still be available.

Plans are also in progress for more special music and musical evenings this summer. Dates and times will be announced later. In the meantime, sit back and enjoy the sweet sounds each week here at POP.





CONNECT in a group



God is on the Move!



MATT KOENIG

Discipleship Pastor/
Director of Adult Ministry
matt@pop.church

Remember the Red Letter Challenge?

In the fall of 2020, Prince of Peace participated in this 40-day challenge to learn from the teachings of Jesus and His words, red letters in the Bible. In February 2022, a POP member, Al, reached out asking for books and study guides for this challenge. I wondered to myself, "Why would Al need 12 books and study guides for *Red Letter Challenge*?" So, I caught him – okay, rather *he came to me* before a recent worship service and said, "I am leading a group through this study in my living community." Then he hurried into worship. Wait! What!?!?! You're doing what? With whom? What is going on here? Who's on first? I had to find out more.

I called Al later to ask the details. (Yes, I was Scooby-Doo trying to solve the mystery.) Al told this interesting and amazing story:

I was asked to join a prayer group at my living community. So, I said sure, I wanted to get to know more people anyway. As I went to the group the first day, I carried my Red Letter Challenge book. I don't know why, but I did. I was expecting someone to say a devotional, and to pray, and then talk. To my

surprise, it was a meeting to discuss ideas for what the group should do next. The leader asked me what I thought.

"I looked down at my hands and said, 'Well, my church finished this study and I think it could be a great one for us as well.' The leader asked to see the book. I handed it over and all eight people in the group were excited to start the study. Then I was asked, 'When do you want to lead us through this book? I was shocked but excited to do this for my new friends. So, we started the next week. There are eight people in the class and others who drop in just to listen.'"

Friends, GOD IS ON THE MOVE and moving, discipling, and growing others even when we don't expect it. I encourage you to keep your eyes and heart open for where and how God is moving in and through you for others. He might ask you to help a coworker, or talk to a neighbor, or listen to the person next to you on the train. Wherever it is, God is on the move and working through you to be a friend to others, to share your story of faith and love with others, and to learn more about Him and His will for you.



A Beautiful Week in the Neighborhood

Vacation Bible School

As the weather warms and the flowers and trees begin to bloom, July 11 comes nearer and nearer! What is July 11, you ask? The first day of VBS 2022!!! This year's theme is the same one Jeni Walker planned for 2020, but we were not able to use. It focuses on **who our neighbor is and how we can be good neighbors!** Each day the kids will grow their view of who their neighbor is, starting with their physical next-door neighbor and growing out to all people!

It takes a village to put on this camp and your help is greatly needed and appreciated! There are a variety of ways for you to be involved from spending the day leading kids to each station, to helping behind the scenes organizing supplies in preparation for the week! You may register to volunteer at pop.church/vbs or email Jennifer at jennifer@pop.church for more information.



JENNIFER EDWARDS

Director of Family Ministry
jennifer@pop.church



POPTeens



Do you have any questions?

FUEL has also had new experiences in the last few months called Question Nights. (Not a very clever name, but gets the point across!) About once per month, a FUEL night is dedicated to discussing any questions the youth have.

They are given the opportunity to ask a question anonymously to be discussed the following week. The questions are asked one at a time and we have an open table discussion, pulling from personal opinions, scripture references, and past conversations and experiences!

A few of the questions that have been asked are "Were Dinosaurs on the ark?" "What happens to people who never had the chance to know God?" "How do we deal with a government that doesn't follow God?" "If all sins are equal, why is premarital sex so bad?" and "Why does God let conflict happen?"

This challenged our thoughts and opinions and we learned how to wrestle with some of the less common topics in youth group and the church.



What's your favorite childhood game? Have you ever wondered what it would be like to have that game come to life? Earlier in the year the IGNITE students experienced one of my favorite games growing up come to life, and thankfully, they loved it too!

Let's take you on the journey! You've just checked the mail and there is an envelope for you! You open the envelope to find an invitation to IGNITE on February 16, asking for your help to solve the mystery behind Ms. Boddy's death! Don't forget to bring a friend to help you solve the mystery!

February 16 rolls around; you arrive at Prince of Peace! You notice signs that say "Study," "Lounge," "Dining Room," and "Billiard Room," and the furniture is not what you're used to seeing! Something exciting is about to happen!!

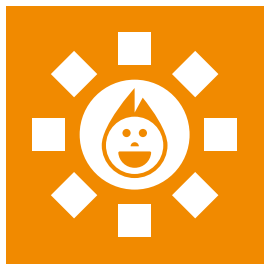
After enjoying a delicious meal of lasagna and garlic bread, Jennifer comes in to fill you in on what will happen next! Ms. Boddy has been killed and it's your job to figure out who did it, where the murder took place and the weapon that was used! You've received your instructions and your team heads out to solve the mystery!

This was great night filled with lots of laughter, wonderful memories, and new friends! We're excited to do it again in the future!



JENNIFER EDWARDS

Director of Family Ministry
jennifer@pop.church



How Families are Connecting in God's word and Community

Thanks to the passion and vision of our two Concordia Fieldwork students, Ben Simmons and Abby Schult, POPKids families have experienced a few great connections through the Lenten and Easter season.

Ben Simmons created a seven-week devotional series to guide families through Lent by looking towards Jesus' life, the wisdom in His teachings, and the way in which He UNITES everyone to His story through His life, death, and resurrection. Ben answered some questions regarding this project:

Why did you want to do this for your senior project?

I wanted to help families incorporate Spiritual routines into their daily lives together. I wanted to provide them with pre-planned devotional materials to help center them in the gospel during this Lenten season. I believe that faith is a communal experience for each person, so what better way to invest into this than through the family.

What is your hope for families to take away from this devotional?

I hope that each family that chooses to work through this series would grow together in relationship with one another and be United in Jesus!

Abby Schult planned a time during POPKids Sunday morning for members of all ages and stages of life to journey through the days of Holy Week. Each group walked through all four stations that represented the events of Holy Week. The large group read the Bible passages together and then in small groups they did little activities that would help them remember the events of that day. Abby answered some questions about her project:

Why did you want to do this for your senior project?

I wanted this project to bring together different generations, learn together, and grow together! Lent is one of my favorite seasons. It is such a time of reflection as we journey with Jesus to the cross, and it is such a learning experience for how we are a part of Jesus' story.

What is your hope for families to take away from this event?

My hope is that families learn together about the importance of

Holy Week and have new ideas and questions to discuss at home, as well as providing devotions for each day of Holy Week to do together after the event!

Thanks to Ben and Abby for their hard work on these two Lenten projects that gave POP members a greater understanding of the story and the season.



Ben and Abby have completed their field work and class requirements for their degrees and will start their one-year DCE internships in June. They have been a huge blessing to me and to the ministries they have served over the last couple of years and they will be missed! Join me as we lift them up in prayer as they begin the next step in their journeys!



JENNIFER EDWARDS

Director of Family Ministry
jennifer@pop.church



SERVE on a team

Celebrating the 3x50 Fund

“You will be enriched in every way
so that you can be generous on every occasion,
and through us your generosity
will result in thanksgiving to God.”

2 CORINTHIANS 9:11



In celebration of our 50th anniversary, Prince of Peace established a goal of raising funds to bless other nonprofit agencies who are making a difference in the Chicagoland area. The original goal was to raise \$300,000 by our October 2021 anniversary, but in light of the pandemic that number was recalibrated to \$150,000. **We exceeded the revised number, with donations of \$173,429.** Thanks be to God and thank you to everyone who invested with courage and donated to the 3x50 fund!

November 2021 Grants



LINC Chicago is a nonprofit dedicated to the work of empowering urban ministry leaders so that their influence will grow, their communities will thrive, and more people will be introduced to the Good News about

Jesus. Check out their video on bit.ly/lincchi thanking us for our contributions. LINC Chicago is looking for prayer partners and those willing to be mentors or hands-on involved in Chicago.



Gerry's Cafe is a new nonprofit seeking to open a café in the Arlington Heights area that will employ adults with intellectual disabilities. Our grant will be used in their training program. “We are beyond grateful for

the generosity and the opportunity to create a more inclusive community when we open Gerry's Café,” says Natalie Griffin, co-founder of Gerry's Cafe.

The 3x50 team also approved start-up funds if POP moves forward with the dream of supporting a Lutheran Church Charities Comfort Dog Ministry at Prince of Peace (see *Dreaming of New Ministries on page 11.*)



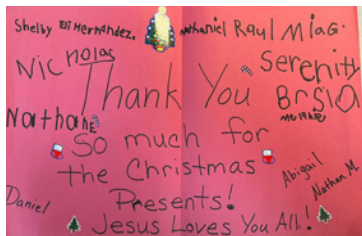
SUSAN KLEMSTEIN

Director of Outreach/Financial Controller
susank@pop.church

Stronger Together Through Generosity

POP demonstrated that we are stronger together by providing amazing generosity in our community during the past six months:

PEACE Groups and congregation members provided 21 food baskets and gift cards to benefit local families through the Palatine Township Thanksgiving Basket program.



Donors provided 197 Christmas gifts through our Christmas Tree of Giving to mission partners **Grace Christian Academy** and **Palatine Township**. "The students

were extremely excited and appreciative of the gifts they received." - Carlo Giannotta, Grace Christian Academy Principal



POP donated \$4,230 in gift cards to help Palatine High School, Academy North, and Fremd High School students in unstable housing situations.

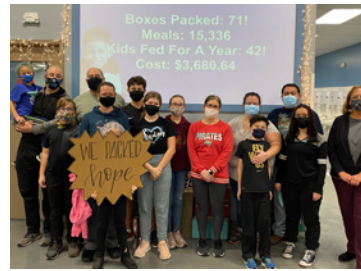
Four other local churches and mission partner **Palatine Assisting Through Hope (PATH)** donated an additional \$15,000 in gift cards and items. These funds not only provided Christmas outreach to 135 high school students, they also supplied assistance to District 15 families in need. A surplus remains that allows social workers to continue assisting local families in crisis for the rest of the school year.

"Thank you for your unwavering support of the students and families of PHS. This season has been one of the most challenging times in the profession because more than ever, we have so many families in need. But, once again our community has risen to the occasion, and we were able to help our families. Because of you, this season is much brighter not only for the families but the staff, too. You give us hope that we can accomplish anything with a little help from our friends. We truly appreciate all you've done to support us. – Palatine High School Staff

Mission funds were also used to supply Christmas gifts to families in need at our neighbor Lincoln school.

Between September 2021 and January 2022, POP congregation donated three Welcome to America Packs

for refugees arriving in the Chicago area through mission partner **Exodus World Service**.



On December 29, 18 people packed hope and meals at mission partner **Feed My Starving Children**. Be on the lookout for our next POP serving night at the Schaumburg FMSC location on Monday, June 6.

Thank you for displaying Prince of Peace's values of *loving one another* and *investing with courage*.

"A generous person will prosper; whoever refreshes others will be refreshed." (Psalm 11:25)



Dreaming of New Ministries

Not only are we resuming existing ministries, we're dreaming of new ones!

Lutheran Church Charities (LCC) Comfort Dog Ministry

You might already be familiar with this ministry from the Golden Retriever Comfort Dogs visits Prince of Peace and other community locations. How amazing would it be for POP to have our own Comfort Dog? So many possibilities to bless our congregation and community! We need your prayers and a few key people to move this potential ministry forward. A variety of volunteer roles would be available in the ministry, but the first need is for a ministry team leader, called the Top Dog. If you have passion for this ministry, email Susan, Director of Outreach at susank@pop.church.

Community Callers

This is a new ministry starting in May at Prince of Peace. The Bible instructs the family of Christ to nurture, love, support, and encourage one another in all our needs. One way to follow this teaching is a simple phone call. This ministry consists of POP members who make 2-3 phone calls a week to connect with other families. Each call is an opportunity to pray with and for each family and see if there are any needs, great or small. Each POP family will receive a phone call three times a year. For more information or to join this team, email Pastor Matt at matt@pop.church.



Recipe for Disaster or Prescription for Care?

One question on our bi-annual Spiritual Life survey is “Do you have at least one person at POP, not including pastors or staff, that you could call if you were in a personal crisis?”

This question quickly moved to a harsh reality for member Cheryl Setser when she was struck by a car while on her daily walk. Cheryl was hospitalized with multiple injuries including a fractured skull, a brain bleed, temporary deafness, extreme headaches, and dizziness. Yet she was quickly released from the hospital. Cheryl has no local family and when discharged, needed extensive support for all aspects of daily life.

Did Cheryl have someone to call? Yes, and wow! Not only did they respond, but they completely surrounded Cheryl, helping her through an extremely difficult recovery. Cheryl called her PEACE Group leader, Kris Reiner. Cheryl

has been a member of the *Women in the Word* PEACE Group for more than 15 years.

In discussions with Cheryl and her group members, I learned six action points for responding to needs like this:

- 1. Pray, pray again, then pray more:** The whole effort started with a group text requesting prayer for Cheryl. This situation was very serious and medically could have turned out much worse or even ended with death. Prayer started and ended everything the group did. God’s hand was on the steering wheel, but each group member pitched in with their hands to help.
- 2. Jump right in:** There was no time to waste. After Kris texted her team, “The response was swift and complete.” Everyone was instantly willing to help, and each responded with what they were able to do in their available time. This included many hours of companionship, multiple tasks, numerous errands, and countless doctor

visits. As group member Tanya Bergman said, “It did not seem like a burden because we are all in a sisterhood together.”

- 3. Take down barriers:** Tanya describes the closeness of the group: “Our group meets weekly, so in addition to Bible study, we have become very social outside of church and comfortable and open talking about our personal problems.” When something like this happens, everyone needs to tell it like it is.
- 4. Work as a team:** Each group member found their niche in the caregiving effort. This would have been overwhelming for any one person. As Kris tells it, “There was never a need to request help. Everyone stepped in to address different needs.”
- 5. Organize:** The response required working out details and helping everyone find their part. Kris is somewhat modest when stating, “I was SO proud of our group and how things just organically came together to get things done.” Kris was pivotal in connecting,

communicating, and affirming everyone's role on the team.

6. Be ready to see God at work! Kris and Tanya both commented on the God-sized blessings that flowed from this experience:

- None of this would have been possible without God! Cheryl's injury was one that could have killed her or severely crippled her mentally and physically.
- Our group has always been a close one, but I feel we are even closer now. None of us is alone. We may have known that superficially before, but we know it in our hearts with certainty now.
- I was blessed by this because my friendship with Cheryl deepened due to the added time spent together. We bonded now in the common challenge of supporting Cheryl.
- God certainly was watching over us and I do believe the group is stronger because of this shared experience.

What does all this mean for you? One day you may find yourself in either position: needing help or able to give help. Are you connected in a way that would make this happen so beautifully and fully as this example? Prince of Peace is about relationships – with God, with each other, and with those outside in a harsh and hurting world. Don't miss out on this vital aspect of our life together!

Opportunities for connecting and getting to know others to form relationships come primarily in two flavors at POP: group life and serving teams. And out of these relationships, we see spontaneous care for one another and all the fruit of life together in Christian community.

Group life, including PEACE Groups, Discipleship Huddles, Missional Communities, and Interest Groups, brings people together who share life in different ways and different levels. The question to consider: Do these connections "gel" to a point where these people are the ones you can turn to in a crisis?

Failure to be connected is both a personal challenge and a cultural failure. Rugged individualism and independence were once perceived as virtues, but they are now liabilities. Isolation and lack of social connection has resulted in higher levels of stress, anxiety, and depression. Many studies have proven that forming meaningful connections, providing tangible care, and praying for each other improves quality of life, health, well-being, and resiliency. What's not to like about that?

If you are not connected now, what steps can you take to move into groups? If you are in a group, where do you see God laying out opportunities to serve one another? And if the situation calls for it, pull out the six-step prescription that the *Women in the Word* delivered for our sister Cheryl!



**DAVE
PENNER**
Director of Care
dave@pop.church



2022 POP Staff Spotlight



Meet Kerri Stallard
New Parish Administrator



Meet Kim Birmingham
New Administrative Assistant

"I have always felt welcome, comfortable, and blessed at POP. I joined Prince of Peace in 2021 and felt a calling to work here when I saw the open position."

About Kerri:

- Married to Jason at POP in 2007
- Mom to six-year-old twins Charlie & Ruth
- Daughter of long-time POP member Gail Eiden
- Over 20 years with The Cheesecake Factory in a field leadership position where she gained experience in hiring and developing staff teams, preparing budgets and strategic plans, and overseeing restaurant certification and compliance.
- Hobbies include outdoor activities, reading, and cheering on Chicago Sports teams

What does a Parish Administrator do?

- Responsible for church operations including Human Resources, Facilities, Finance and Office Management
- Oversees the Financial Controller, Office Staff & Facilities Manager

A Few of Her First-Year Goals:

- Hire a Part-Time Administrative Assistant
- Increase staff development opportunities
- Risk Assessment including safety & security
- Streamline the Lutheran Elementary Education Program (LEEP) process

About Kim:

- Married to Matt since 2001
- Mom to 17-year-old daughter Morgan who was baptized at POP in 2005
- Over 25 years in the financial services industry, including 16 years at a world's top 10 largest bank
- Hobbies include listening to music, gardening, and watching sports

Primary Responsibilities:

- Welcome and receive visitors and members
- Route phone calls, emails, and U.S. mail
- Assist with maintaining inventory of supplies
- Office support for ministry staff and miscellaneous projects

Please pray for and encourage Kerri and Kim as they serve the Lord here at POP in new and exciting ways!



Dave Penner resigned his part-time position as POP's Director of Care effective at the end of April. After nearly six years of service, Dave has faithfully served with POPCare volunteers and staff, providing care to countless POP and community members. Dave is stepping back for personal and family wellbeing, for intentional rest, and to prepare for what God has for him next in ministry. We encourage you to send Dave thank-you notes and emails to dave@pop.church.

Dawn Lange and Ashleigh Bulak have also stepped down from their roles as part-time Nursery Coordinators. "Miss Dawn" is retiring to focus on her volunteer passions, and Ashleigh is expecting a new baby this summer.



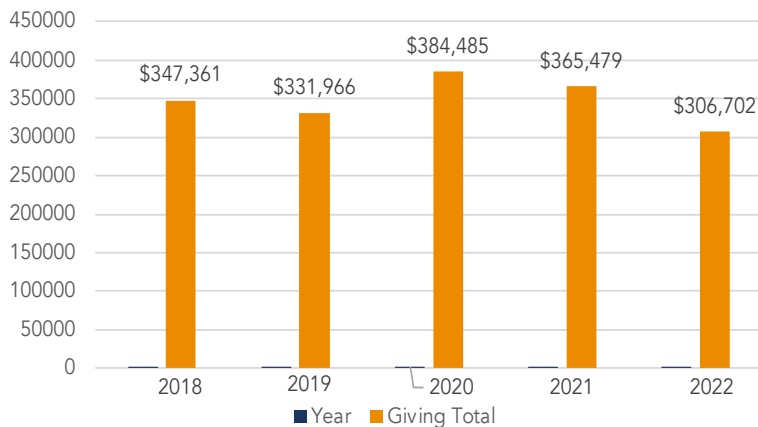
Dear POP Family,

It has been a blessing to join the team here at POP! I am excited to see the ways God will show me how to help support POP's staff, members, and community.

Our congregation continuously strives to be God's hands and feet, as you have read in this newsletter. The pandemic did not stop POP's ministry. So many wonderful stories of ministry work, serving teams, PEACE groups, events, and more! Your generous donations have kept these going through the "Covid" years. POP has been able to touch so many lives and bring them the hope we have in Jesus.

As shown on the graph below, first quarter 2022 giving is significantly down compared to the past five years, and \$82,000 less than our 2022 year-to-date budget. As POP continues our current ministries and dreams of new ways to share Christ's peace in our community, we pray that God opens new ways for us to share our gifts, both spiritual and financial.

1st Quarter Giving



Are you aware of ALL the different ways you can give to POP?

- **Online:** Visit pop.church/give to set up one-time or recurring donations via ACH or credit card.
- **Church Center App:** Select Give on the app and enter your amount.
- **By Text:** Text a dollar amount to 847-393-4434.
- **By Mail:** Send a check in your offering envelope or place in our secure outdoor mailbox.
- **Appreciated Stock:** Stock gifts are transferred directly to POP and are not subject to capital gains tax.
- **IRA Charitable Donation:** If you are 70½ or older, you can transfer a gift directly from your IRA to POP and avoid paying income taxes on your donation.
- **Give by Charitable Fund Grant:** Grants can be made to POP from your Charitable or Donor advised fund.

Give in other unique ways:

- **Thrivent Choice Dollars:** Thrivent members have the opportunity to direct Thrivent Choice Dollars to Prince of Peace. Learn more at thrivent.com/about-us/membership/thrivent-choice.
- **AmazonSmile:** Amazon shoppers can designate a charity of their choice to receive 0.5% of their Amazon purchase dollars. Learn more at smile.amazon.com.
- **Workplace Benevolence Program Dollars:** Some employers enable charitable giving through payroll deductions and may even provide a company match

Contact me or Susan Klemstein (susank@pop.church) with any questions regarding these giving opportunities.

Thank you all for the ways you continue to bless POP. I look forward to continuing to serve you and bring the hope of Jesus to our community. We are truly stronger together!

God bless,



KERRI STALLARD

Parish Administrator

kerri@pop.church



POPEvents

New events are added regularly.
Here are just a few.

Check out Events on the Church Center mobile app or at www.pop.church for the latest information and a full list of events and serving opportunities.

- May 15** **Voters Informational Meeting**
- May 1-20** Stronger Together Art Show Gallery in Fellowship Hall Mon-Fri 10am-2pm (Also available online)
- May 20** Stronger Together Art Show Award Night 7pm ▪ Live at POP and Online
- May 22** **Voters Meeting**
- May 28-29** **Memorial Day Weekend**
- May 30** **Memorial Day Observed**
Church Office Closed
- June 6 Feed My Starving Children (FMSC)
Packing Session (offsite)
- July 4** **Independence Day**
Church Office Closed
- July 11-15 Vacation Bible School
- June 30 Feed My Starving Children (FMSC)
Packing Session (offsite)



About the Cover

The image above depicts the theme for POP's 2022-2023 ministry year. We will seek to be **in the word daily**, **connect with friends regularly**, and **serve others often**.

You will get to **Know His Story** through Bible study and weekly worship. Pastor Karl and Pastor Matt will encourage you to **Tell Your Story** by witnessing and serving and ultimately teach you to **Live Our Story** through connecting in our community.



PRINCE of PEACE
LUTHERAN CHURCH

discover peace. together.

Lutheran Church—Missouri Synod

1190 N. Hicks Road ▪ Palatine, Illinois 60067



www.pop.church



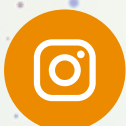
847-359-3451



office@pop.church



POPLC



POPPalatine



Prince of Peace
LIVE!