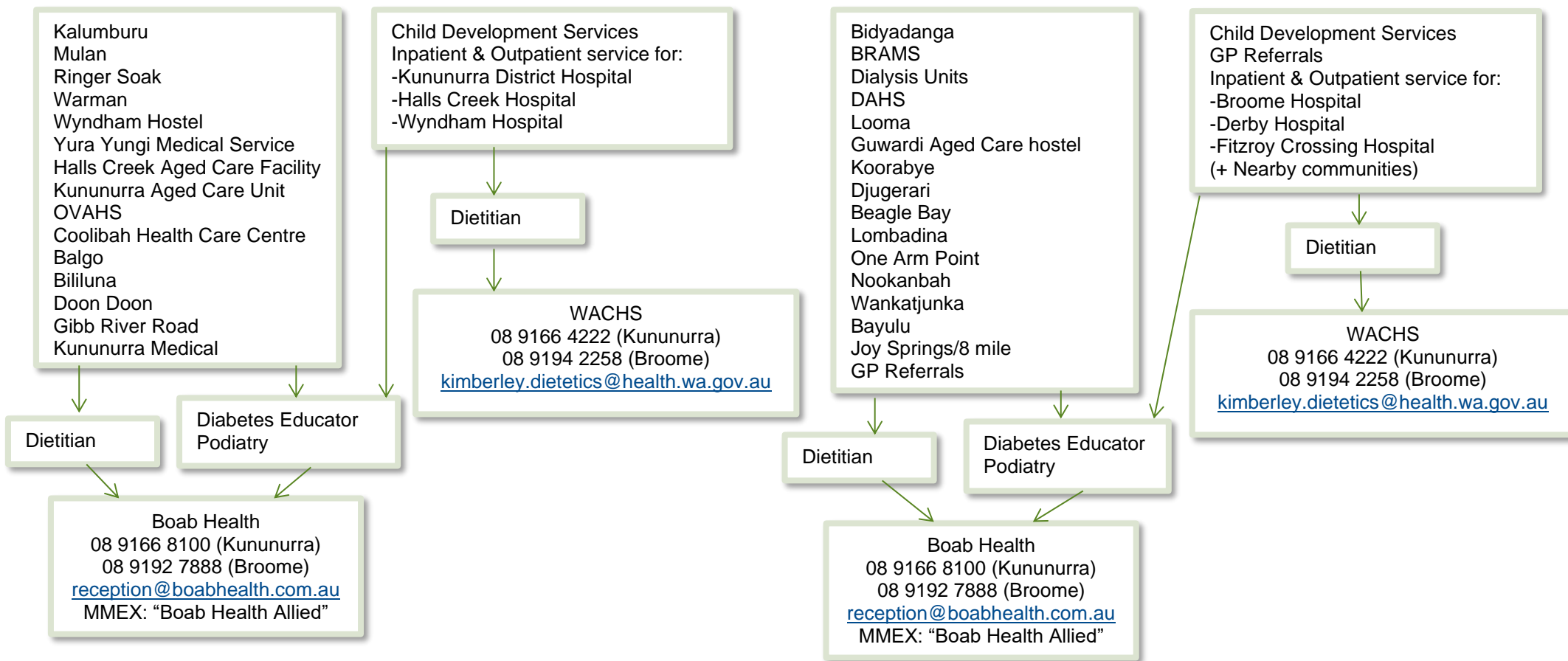


KIMBERLEY ALLIED HEALTH DIABETES SERVICES

East Kimberley

West Kimberley



<https://boabhealth.com.au/wp-content/uploads/2019/07/Allied-Health-Referral-Form.pdf>

[http://www.wacountry.health.wa.gov.au/fileadmin/sections/child_development/eDoc - CO - CDS Referral Form Internet Version August 2018.pdf](http://www.wacountry.health.wa.gov.au/fileadmin/sections/child_development/eDoc_CO_CDS_Referral_Form_Internet_Version_August_2018.pdf)

There may be some situations where a Diabetes Educator is unavailable due to periods of leave or in absence of hospital coverage. In these situations, please refer to Diabetes WA Telehealth Services:

https://www.diabeteswa.com.au/wp-content/uploads/2019/01/telehealth-professional-referral-form_a4-flyer_interactive.pdf

telehealth@diabeteswa.com.au or fax to 9221 1183. For phone contact call 1300 001 880.

Additional Services:

<https://www.nindilingarri.org.au/services> (Fitzroy Valley);