

Jocelyn is a family caregiver for her father who wishes to remain independent in his own home. After he experienced a number of worrying falls, Jocelyn sought an unobtrusive yet reliable method of monitoring him.

Jocelyn has been caring for her father for the past three years since her mother's passing. He lives alone in the family home and is still fiercely independent. Concerned at her father's recently declining health however, Jocelyn felt the need to take precautionary action and set out to find a simple way in which he could alert for help if he required it.

### The solution

After some research, Jocelyn discovered the Find-Me Tunstall Watch. An alert button, inbound mobile phone and GPS tracking locator in one; the watch offered a discreet and unobtrusive solution.

Jocelyn found the watch offered her father the level of independence he required, while lending peace of mind to both herself and her family.

## Case Study- Jocelyn's Story



"In the past if we hadn't been able to contact him at home, one of us had to go up there. If that happens now we just call the watch, and if he doesn't answer we can text for a map of his location," says Jocelyn.

"It's peace of mind, if he's in trouble he just pushes the button... he doesn't have to crawl to the phone in order to get help"

- Jocelyn

## How it works

The Find-Me Tunstall Watch is pre-programmed and set up using a simple web interface. The user simply needs to wear the watch and charge when required.

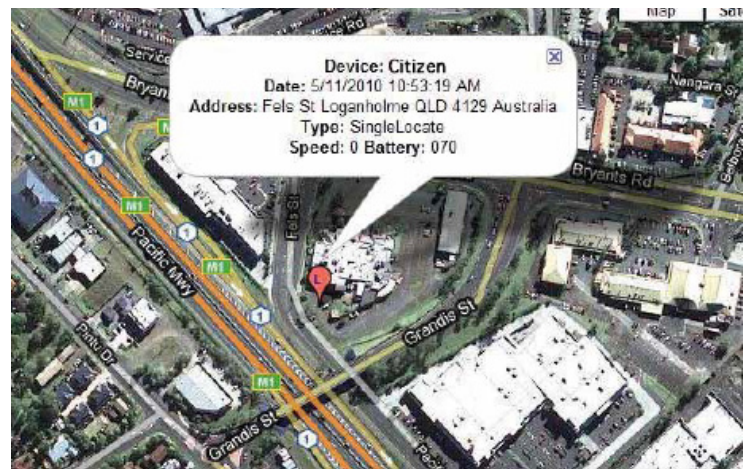
The watch works by using a pre-installed SIM (similar to a mobile phone) and will work anywhere there is mobile phone coverage.

The alert button is programmed to contact Tunstall's 24 hour response centre and advise an additional four numbers with a map location via SMS and email.

The watch can be contacted by any landline or mobile phone and an authorised user can also login using their individual username and password to monitor the wearer's location.

## Features and Benefits

- Can be used outside of the home; anywhere there is mobile phone network coverage
- A programmable safe zone; allowing an alert to be sent should the wearer leave a specified area.
- A destination alert; allowing the monitor to be advised when the wearer reaches a programmed destination.
- Medication reminder alert; allowing up to 10 medication alerts to be set.
- Dual directional voice communication; allowing the wearer to speak directly with a trained operator.
- A map location provided on the activation of an alert; with a real street address and a map visual.
- GPS tracking; allowing the authorised user to see where the wearer has been and the direction they are heading.



## Who is it for?

- Older people
- People living with dementia
- Those that feel vulnerable in the community
- People of any age receiving medication
- People living with chronic disease
- Facilities that need to monitor patients

MK-DS-AU-029-010

For further information contact  
**1800 611 528**

Tunstall Australasia Pty Ltd t/a Tunstall Healthcare  
1/56 Lavarack Ave Eagle Farm QLD 4009  
t: (07) 3637 2200 f: (07) 3637 2255  
e: sales@tunstallhealthcare.com.au  
w: www.tunstallhealthcare.com.au

**Tunstall**