

# Fast Delivery Fine Processing Prototype Company

**NISINO**

## MARKETS

Medical

Automotive

Semiconductor

Optical

We provide **ONE-STOP Services**  
from sheet metal to pressing and milling.

### 1. **OVERALL** Prototype Manufacturing

We are an overall prototype company, providing ONE-STOP Services.

### 2. **FAST** Delivery

We can take orders from one piece to meet your needs.

### 3. **FINE** Processing

We can manufacture fine parts from as small as a sesame seed.

### 4. **HIGH PRECISION**

In a temperature controlled room.

# NISINO SEIKI Co.,Ltd

HP : <http://www.nisino-seiki.com/en/>

TEL : (+81) 29-265-9595 E-mail : [info@nisino-seiki.com](mailto:info@nisino-seiki.com)





## Fine Processing in Our Company

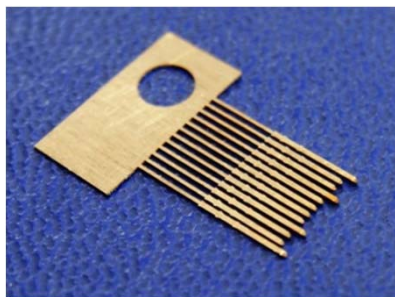
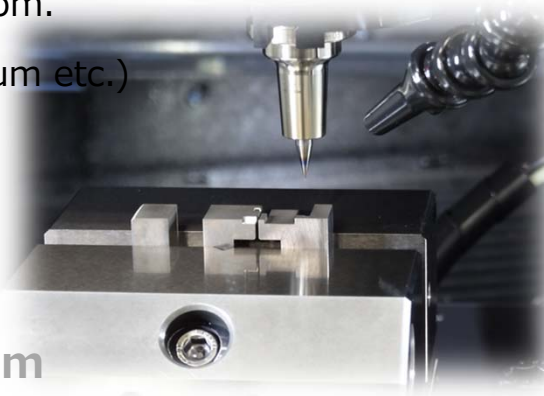
- High precision milling in a temperature-controlled room.
- Capable of milling difficult materials (SUS630, Titanium etc.)
- Manufacturing press parts in a week from one piece.

Hole Diameter Accuracy

**±0.003**mm

Pitch Accuracy

**±0.001**mm



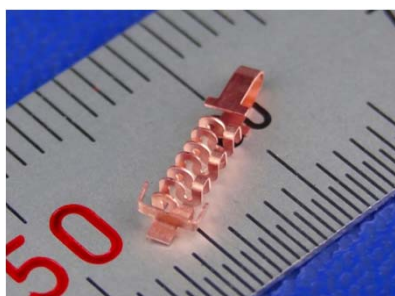
The edge of each terminal is chamfer-pressed by a tool made in-house. Each gap between the terminals is approximately 0.16mm, cut by a fine laser machine.

Material : Brass  
Accuracy : ±0.02mm  
Quantity : 100  
Lead-time : 10days  
Size : t0.15×12×10mm



After quenching, we keep flatness by surface grinding. This 4mm thick stainless steel(630 H900) has 50 φ0.21mm-holes and M1 tapping.

Material : Stainless steel  
(630 H900)  
Accuracy : ±0.003mm  
Quantity : 1  
Size : t4×30×20mm



This part is 10mm long with 22 bending places, the accuracy within ±0.03mm. By preparing 7sets of bending die in-house, our highly skilled engineer makes 30 pieces in a week.

Material : C5210,  
Phosphor Bronze  
Accuracy : ±0.03mm  
Quantity : 30  
Lead-time : 7days  
Size : t0.1×10×2mm

# NISINO SEIKI Co.,Ltd

56 yamazaki,Hitachinaka-shi,Ibaraki,311-1251,Japan

TEL : (+81) 29-265-9595

E-mail : [info@nisinoseiki.com](mailto:info@nisinoseiki.com)

<http://www.nisinoseiki.com/en/>

