

# EASTSIDE HERITAGE CENTER



*Connections for yesterday, today, and tomorrow.*

## HERITAGE REFLECTOR

Fall 2017

Volume XVII

Issue III

### Vision

To be a destination heritage museum and research facility that enhances community identity through the preservation and stewardship of the Eastside's history.

### Mission

To steward Eastside History by actively collecting, preserving, and interpreting documents and artifacts, and by promoting public involvement in, and appreciation of, this heritage through educational programming and community outreach.

### In this Issue

Recent Accessions.....	2
Photo Printing.....	2
Collections Corner.....	3
Welcome New ED.....	4
Upcoming Events.....	5-6
Heritage Corner.....	7
EHC Membership .....	7

## The Wilburton Trestle

Standing tall over I-405 near the Wilburton and Woodridge neighborhoods of Bellevue, the Wilburton Trestle is an iconic landmark on the Eastside. It was built in 1904 by the Northern Pacific Railroad, as part of the eleven mile Hewitt-Lea lumber spur which was completed in 1906.

The trestle stands 98-feet tall, and is 984-feet long. The Northern Pacific Railroad built the trestle and spur to support the logging activities in Wilburton, and connected the remote forests of the Eastside to Seattle. During the logging era, there was a mill pond underneath the trestle, created by the damming of nearby Kelsey Creek. Cut timbers would be splashed down and then hauled out by scows to Lake Washington. Prior to the lowering of Lake Washington in 1916, the Mercer Slough was a navigable waterway and extended much further inland. Just past the Trestle, there was a dock that serviced the area near the Wilburton mill.



Above: The Wilburton Trestle in Bellevue, taken July 1972. #L89-6-8

When the trestle was built, Wilburton was a company town with a larger population than Bellevue. The expansion of the railroad encouraged people in the Seattle area to relocate to the Eastside to work in the lumber mill, the coal mines or as labor on the railroad. The first sawmill in Wilburton opened in 1903 and was taken over by Hewitt-Lea Lumber Company in 1905 who operated the mill until 1919.

Many of the workers at the Hewitt-Lea Mill were

immigrants, coming from Japan, Sweden, Finland and Ireland, to work and live in the Bellevue area. Today the Wilburton Trestle stands as a prominent reminder of the areas logging history.

The trestle and rail line remained in use intermittently after regular service tapered off in the 1920's. The last freight load went across the trestle in 2008, and passenger service ended in 2007 when the Spirit of Washington Dinner Train route was

*Continued on pg. 2...*

...cont.. from pg. 1



Above: Hewitt-Lea locomotive at Wilburton Mill . #2002.147.004

disrupted by I-405 construction.

In 2016 it was announced that King County has assembled significant funds to repurpose the historic Wilburton Trestle into an elevated trail that provides spectacular views of the Eastside skyline. It will be connected to the Eastside Rail Corridor, a 16-mile regional trail stretching from Renton to Woodinville with a spur to Redmond. The project is anticipated to be completed in 2020.

Eastside Heritage Center (EHC) is excited for the historical opportunities that can be added to this project.

This project presents the chance to share the vast history of the Wilburton and Midlakes area of Bellevue, including the history of the town of Wilburton, the Hewitt-Lea Lumber Mill, the effects of the lowering of lake Washington in the area, and so much more!

For more information on the Eastside Rail Corridor Trail project, visit: <http://www.kingcounty.gov/services/parks-recreation/parks/trails/regional-trails/popular-trails/eastside-rail-corridor.aspx>



Above: The Spirit of Washington Dinner Train going over the Wilburton Trestle in 2007. #RD2016.006.100

## Recent Accessions

*Thank you for your donations to the collection:*

Sherry Grindeland – Rosalie Wheyel Doll Museum Book and Snoqualmie Falls Lodge coaster.

City of Bellevue –Black Council of the Eastside institutional archives.

Jon Waite – Mangle from Japanese owned laundry in Kirkland.

Mike Schmidt – Winch from Lake Sammamish boathouse.

Barb and Steve Williams – A.Y.P. 100th anniversary materials, Spirit of Washington t-shirt, Bellevue parks ephemera.



Above: #2017.042.001, Industrial mangle used in Japanese owned laundry in Kirkland.

## Historic Photo Printing

Did you know you can order historic photos of the Eastside to decorate your home or office, or give as a gift? For a modest fee, EHC staff and volunteers can assemble photos from the EHC collection that illustrate a wide range of topics. Browse some of the photos available online at [www.EastsideHeritageCenter.org/Gallery](http://www.EastsideHeritageCenter.org/Gallery) or contact our office at 425-450-1049 or [Info@eastsideheritagecenter.org](mailto:Info@eastsideheritagecenter.org)



Above: Bellevue's first automobile service garage circa 1919, located on Main Street. #2002-129-008 from the EHC collection, courtesy Bob Hanson.

# Collections Corner

Sarah Frederick  
Collections Manager

## Exhibits:

Our most recent exhibit at the Bellevue Library was on the history of the Highland School. If you missed it, don't worry, we have several new exhibits going up around the community in the coming months. Our next exhibit at the Bellevue Library will be in December. Our current exhibit at the Meydenbauer Theater, *Bellevue Community Theater*, will be rotating out this fall. And our annual holiday exhibit will be going up at Crossroads Mall for the entire month of December.

## EHC Online:

Have you checked out Eastside Heritage Center's Past Perfect Online portal ([www.EastsideHeritageCenter.PastPerfectOnline.com](http://www.EastsideHeritageCenter.PastPerfectOnline.com)) recently? We are adding new records every month from our photo, object and archival collections. We currently have around 3,000 items from our collection, searchable by keyword, available online.

## Collection Care:

Earlier this spring, we received a donation of Spacesaver Compact shelving, new office chairs, plexi exhibit stands, cubicle walls and standing plexi display panels from our colleagues at History House in Fremont. The Spacesaver shelving has been installed at our archives storage



Above: Highland School, c. 1934, courtesy of the Puget Sound Regional Archives.

facility and has the capacity to hold up to 125 cubic feet of records. A huge thank you to History House for this donation of equipment, which has already increased our storage capacity at the archives! With the recent move from the Winters House, all research requests are now handled by appointment only. Have a burning question about the history of the eastside? Contact our *Collections Manager* at [Collections@eastsideheritagecenter.org](mailto:Collections@eastsideheritagecenter.org) or 425-450-1049 and we'll see how we can help.

## Collection Care Grant:

Eastside Heritage Center has recently been awarded \$2,260 from 4-Culture for our 2018 collections care needs. Funds from this grant will purchase archival supplies needed to protect and preserve our collection, as well as to install a rolled textile rack at our artifact storage facility. Rolling large textiles, like quilts, rugs and banners, puts less stress on the fibers than folding, and will help to ensure the artifacts survival over time. Additional earthquake proofing supplies for the artifact storage facility will also be purchased, to better secure unboxed, oversized items stored on pallet racking. Thank you 4-Culture for continuing to support the care for our collection!



Above: New shelving at the archives, now home to our newspaper collection and eastside schools collection.

## Wish List

*EHC is seeking the following donations:*

### For care of the collection

- HEPA vacuum for cleaning artifacts
- Chest freezer for treating and isolating artifacts
- 10 Acid Free binders

### For the collection

- 1968 Pop Dot paper dress from the Pacific Northwest
- Arts and Crafts Fair Photos, documents, ephemera related to eastside immigration, 1970-present
- Materials from the Crossroads and Eastgate neighborhoods, any era, particularly photos
- Issues of the *Overlake Outlook* newspaper
- Lake Hills Roller Rink or Skate King photos or ephemera
- Eastside materials from the 1970's to present day

### For use in the office

- Android or Windows tablet for use in off-site storage and at events
- Self-healing (PVC) cutting mat for producing labels for exhibit and outreach activities

### To Donate Items:

Call: (425) 450-1049 or

Email: [Collections@](mailto:Collections@eastsideheritagecenter.org)

[eastsideheritagecenter.org](http://eastsideheritagecenter.org)



## Eastside Heritage Center

### Board of Trustees

Rick Carlson <i>President</i>	Mike Nesteroff <i>Secretary</i>
Brittany Barker <i>1st Vice President</i>	Mike Luis <i>Treasurer</i>
Stu Vander Hoek <i>2nd Vice President</i>	Don Davidson <i>Trustee Rep to Exec Cmte</i>
Ross McIvor	Jan Van Blaricom
Sherry Grindeland	Paul Lwali
Justin Merriman	Jerry O'Day
Betina Finley	Bruce Morgan
Trisha Nerney	Mike Johnson

### Staff

Josh Gannis <i>Executive Director</i>	Sarah Frederick <i>Collections Manager</i>
Jane Morton <i>Education Coordinator</i>	Lexi Roberts <i>Marketing &amp; Community Mgr.</i>

### Endorsers

Bob & Clodagh Ash	Pamela Lee	Daphne Schneider
Margot Blacker	Ken Johnson	David Schooler
Mike Creighton	Leslie Lloyd	Karl Thunemann
Jean Floten	Doreen Marchione	John Valaas
Kemper Freeman, Jr.	Dan McDonald	Janice & DP
Stacey Graven	Louise Miller	Van Blaricom
Jerry Henry	Rose Nohara	Bob Wallace
Ross Hunter	Bob Nuber	Scott Wallace
Tom Ikeda	Ron Sher	Rosalie Whyel
Carol James	Lee Springgate	
Fred Jarrett	Bill Ptacek	
Sarah Langton	Colin Radford	

### Charter/Founding Members

Brad Best	Rosemary Kramer	Bob & Pat Sandbo
John Betrozoff	Bill Lagen	Victor Scheffer
C.Keith Birkenfeld	Charles Le Warne	Daphne Schneider
Richard & Margot Blacker	Anne Long	Dick & Susan Schwasnick
Charles Bovee	Jim & Pat Loughran	Barbara Sharpe
Dianna Broadie	Karen & Duke Luetjen	Nancy Slote
Mardy Call	Louis & Patty Marsh	W. & V. Thompson
John Cannon	Beatrice Mathewson	Karl Thunemann
Karyl Dean	Philip Maxeiner	Iris Tocher
Steve & Kathy Dennis	Lee Maxwell	D.P. & Jan Van Blaricom
Phil Duryee	John McClelland	Stuart Vander Hoek
Phyllis Fenwick	Rosa McDonald	Libby Walgamott
Diana Ford	Louise Miller	John Walker
Peter Gulick	Alex Modelski	Doug & Patti Ward
Birgit Hansen	Charles Morgan	James & Gwen Warren
Peggy Hansen	Bob Neir	Robert & Barbara Welsh
Bob Hennig	Phil & Shelley Noble	Rosalie Whyel
Thomas K. Hitzroth	C. & W. O' Donell	Marcy Williams
Helen Johnson	Arnold Olson	
Karen Klett	Sally Polk	
Suzanne & Tom Knauss	Connie Reed	
	Betty Ann Rizk	

## Welcome New Executive Director!



We are excited to welcome Josh Gannis, as our next Executive Director! Josh joined the team in August 2017, and will lead EHC in our mission to preserve and share the history of East King County with the community.

"I'm overjoyed at becoming the Eastside Heritage Center's new Executive Director," says Josh. "I have been impressed and humbled by the passion and energy of all the board members, staff, and volunteers I have met."

Josh comes to EHC with an extensive and diverse background in leading museum and educational non-profit organizations. After earning a B.A. degree in History at Central Connecticut State University, and a Master's in U.S. Constitutional History from San Francisco State University, he comes to EHC with more than thirteen years of experience in both large and small scale education, and culturally focused non-profit organizations.

EHC is thrilled for the experience and knowledge he will bring, especially in outreach programming. He comes from The Mountaineers as the Youth Education Manager, and served prior to that as the Program Director at the Mercer Slough Environmental Education Center for their partnership program with the Pacific Science Center and City of Bellevue. For over seven years, he served as the Associate Director of the Crissy Field Center of the Golden Gate National Parks Conservancy, where he spear-headed a nationally acclaimed program designed to engage underserved residents of the San Francisco Bay community with the natural and cultural resources of the National Park. His work at the Crissy Field Center helped the National Park Service in the Pacific Region to create more inclusive programming and outreach strategies.

Josh brings with him a wealth of grant writing and partnership building experience. He is excited to be back in Bellevue pursuing his first love: public history.

EHC invites all to join them in welcoming Josh as he begins his new adventure here. Josh can be contacted at [Director@eastsideheritagecenter.org](mailto:Director@eastsideheritagecenter.org).

# Upcoming Programs

## AUTHOR TALK: THE STORY OF THE BELLEVUE DOWNTOWN

**Date & Time:** Saturday, September 23  
10:30AM-12:00PM

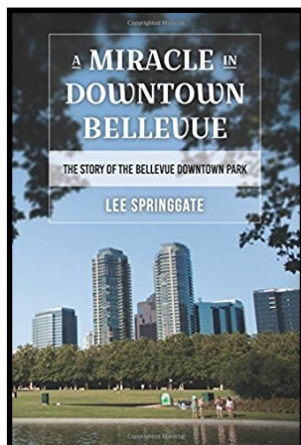
**Location:** Mercer Slough Environmental Educational Center– Douglas Fir Community Room  
1625 118th Ave SE, Bellevue 98005

How did Bellevue's iconic downtown park come to be? Discover the extraordinary story of the Bellevue Downtown Park, a stunning, once in a generation achievement that set the standard for Bellevue's world class park system. Past Bellevue Parks and Community Services Director, Lee Springgate who led the department from 1978 through 1999, shares how the idea of a central downtown park in Bellevue began, and the process it took to complete it in his new book, *A Miracle In Downtown Bellevue: The Story Of The Bellevue Downtown Park*.

What started as a dream in 1983, blossomed into one of Bellevue's largest public space projects, and took thirty-four years to complete. The event will include an open forum and presentation from Lee Springgate on the historical grounding of the park, what it took to make it happen, and its importance to both the city and the parks system of Bellevue. Through exceptional leadership, political courage, and a coherent vision, a beautiful urban oasis was created in the heart of downtown Bellevue for both citizens, and visitors to enjoy.

To ensure we have enough seating, please register for this event by emailing [Info@eastsideheritagecenter.org](mailto:Info@eastsideheritagecenter.org) or calling 425-450-1049. For further information on this event and where you can purchase the book visit: [www.EastsideHeritageCenter.org](http://www.EastsideHeritageCenter.org).

*Supported by 4Culture and in partnership with Bellevue Parks & Community Services.*

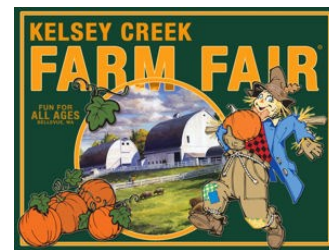


## KELSEY CREEK FARM FAIR & FRASER CABIN HERITAGE PROGRAMMING

**Date & Time:** Saturday, October 7  
11:00AM-4:00PM

**Location:** Kelsey Creek Farm  
410 130th Pl SE, Bellevue 98005

Join Eastside Heritage Center for the last open day of the season of the 1888 Historic Fraser Cabin in conjunction with the annual Kelsey Creek Farm Fair! At the Fraser Cabin, Eastside Heritage Center staff and volunteers will be presenting pioneer activities and interpreting the cabin that was built by the Fraser Family over 100 years ago! Activities include, agricultural, farming and pioneer household tasks, log cabin construction, games and a scavenger hunt!



At the Farm Fair, visitors can enjoy searching for their own pumpkin in the pumpkin patch, tractor rides, inflatables, and children's craft activities.

*Presented in partnership with Bellevue Parks & Community Services.*

## CROSSROADS MALLOVEEN TRICK OR TREATING

**Date & Time:** Tuesday, October 31  
4:00PM-6:00PM

**Location:** Crossroads Bellevue Shopping Center  
156000 NE 8th St,  
Bellevue, 98008



Looking for somewhere to go trick-or-treating? Come to Crossroads Shopping Center in Bellevue! Eastside Heritage Center will be helping our partnering business Crossroads Bellevue host their annual Halloween event by supplying volunteers to pass out candy.

Interested in volunteering? We can always use more help! Contact Lexi Roberts, Marketing & Community Manager at 425-450-1049 or [Lexi@eastsideheritagecenter.org](mailto:Lexi@eastsideheritagecenter.org).

*Presented in partnership with Crossroads Bellevue.*

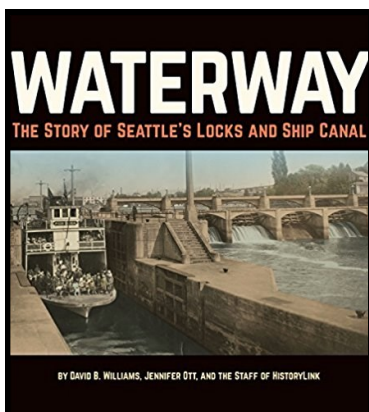


## AUTHOR TALK—WATERWAY: THE STORY OF SEATTLE'S LOCKS AND SHIP CANAL

**Date & Time:** Sunday, November 12  
4:00PM-5:30PM

**Location:** Mercer Slough Environmental Educational Center– Douglas Fir Community Room  
1625 118th Ave SE, Bellevue 98005

Why does a city surrounded by water need another waterway? Find out what drove Seattle's civic leaders to pursue the dream of a Lake Washington Ship Canal for more than sixty years and what role it has played in the region's development over the past century. Historians Jennifer Ott with staff from



HistoryLink and David B. Williams, author of *Too High and Too Steep: Reshaping Seattle's Topography*, explore how industry, transportation, and the very character of the city and surrounding region developed in response to the economic and environmental changes brought by Seattle's canal and locks in their new book *Waterway: The Story of Seattle's Locks and Ship Canal*.

Jennifer Ott will be joining Eastside Heritage Center for this program and will be discussing, “decades of false starts and political shenanigans – as well as the far-reaching social, economic and environmental impacts – of the Lake Washington Ship Canal.” This program will also discuss Eastside Heritage Center's social studies curriculum program, *Change Over Time*, that will soon be available online through HistoryLink! The *Change Over Time* curriculum focuses on the how the Lowering of Lake Washington in 1916 effected the Eastside through individual accounts from Eastside Heritage Center's collection. The program was developed in partnership with the Bellevue School District for sixth and seventh grade students.

To ensure we have enough seating, please register for this event by emailing [Info@eastsideheritagecenter.org](mailto:Info@eastsideheritagecenter.org) or calling 425-450-1049. For more information on Eastside Heritage Center visit: [www.EastsideHeritageCenter.org](http://www.EastsideHeritageCenter.org).

*Supported by 4Culture, and in partnership with Making the Cut and Bellevue Parks & Community Services.*

# Save the Date!

## EASTSIDE HERITAGE

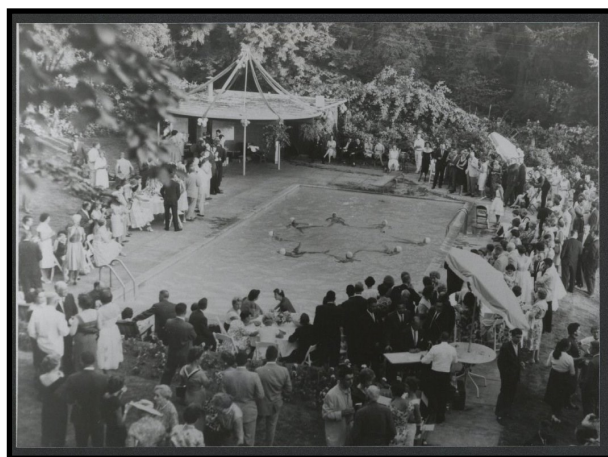
## BENEFIT DINNER

Wednesday

February 28, 2018

5:30pm-9:00pm

Meydenbauer Center



*It will be a gathering like no other...*

## Get Involved!

Be an Eastside history advocate, and join us as a **TABLE CAPTAIN** or **SPONSOR** this year!

Help make connections for yesterday, today and tomorrow by inviting your friends and colleagues to join you on a journey through time at the Annual Heritage Benefit Dinner.

Contact Lexi Roberts, Marketing & Community Manager for more information on how you can get involved at 425-450-1049 or [Lexi@eastsideheritagecenter.org](mailto:Lexi@eastsideheritagecenter.org)

# Heritage Corner

## Bellevue Biographies: Calanthia Burrows



Above: Calanthia Burrows, c. 1884.  
#1996BHS.11.35

School is officially back in session, and it has us thinking about some of the Eastside's first schools. The first school in Bellevue opened in 1884, and it's first school teacher was Calanthia Burrows, daughter of Bellevue pioneers Albert and Martha Burrows. She was paid \$40 a year.

In the spring of 1884, Albert Burrows donated land for the first school in Bellevue and helped to build the one-room schoolhouse. The school was located in

Killarney, a little south of present day Chesterfield Park, on the beach. There were seven pupils in the first class.

School lasted for three months. During this time, School District 29 was formed, and it included Mercer Island, extended south to the Black Diamond District, north to Houghton and east to Lake Sammamish. Calanthia eventually married and moved to Seattle with her husband. At this time, married women were not allowed to be teachers.

To learn more about Bellevue and Eastside history, contact the Eastside Heritage Center at 425-450-1049 or visit [www.EastsideHeritageCenter.org](http://www.EastsideHeritageCenter.org)



Above: Years later in 1892 the Main Street School shown here, was built where Calanthia also taught.  
#ORL79-79-89

## All Eastside Heritage Center Members receive:

- Membership Card
- Quarterly Newsletter with historical features and program updates
- Invitations to exhibits and programs
- 10% discount on books and gift shop items

## CATEGORIES:

### Benefactor - \$1,000

- Receives Steward Benefits, plus:
- Honored at Annual Event

### Steward - \$500

- Receives Supporter benefits, plus:
- Special publication
- Curator's Tour of the collection

### Supporter - \$250

- Receives Organization benefits, plus:
- Historic photo reproduction

## Eastside Heritage Center MEMBERSHIP APPLICATION

### MEMBERSHIP LEVEL:

- |   |  |
|---|--|
| <input type="checkbox"/> Benefactor \$1000  | <input type="checkbox"/> Contributor \$100 |
| <input type="checkbox"/> Steward \$500      | <input type="checkbox"/> Family \$40       |
| <input type="checkbox"/> Supporter \$250    | <input type="checkbox"/> Individual \$25   |
| <input type="checkbox"/> Organization \$100 | <input type="checkbox"/> Student \$15      |

Enroll me as: ☐ New Member ☐ Membership Renewal ☐ Gift

MEMBER'S NAME \_\_\_\_\_

ADDRESS \_\_\_\_\_

CITY/STATE/ZIP CODE \_\_\_\_\_

PHONE \_\_\_\_\_

EMAIL \_\_\_\_\_

*This membership is a gift from:* \_\_\_\_\_

### PAYMENT INFORMATION:

- ☐ Check (make checks payable to the Eastside Heritage Center)
- ☐ Credit Card
- ☐ Visa ☐ Master Card ☐ American Express

NAME ON CARD \_\_\_\_\_

CARD # \_\_\_\_\_

EXP. DATE \_\_\_\_\_

V-CODE (last 3 digits on back) \_\_\_\_\_

Additional Contribution: \_\_\_\_\_ Total Enclosed: \_\_\_\_\_

☐ My company will MATCH my gift. Company Name: \_\_\_\_\_

*The Eastside Heritage Center is a 501 (c)(3) charitable organization.*

### PLEASE MAIL THIS FORM AND PAYMENT TO:

Eastside Heritage Center  
P.O. Box 40535  
Bellevue, WA 98015

Phone: 425-450-1049  
Fax: 425-450-1050  
[www.EastsideHeritageCenter.org](http://www.EastsideHeritageCenter.org)

## Organization (schools, scout troops, etc) - \$100

- Receives Contributor benefits, plus:
- Discounts on Treasure Box rentals, field trips and classroom presentations

## Contributor - \$100

- Additional benefits include:
- Access to Archives fee waived

## Family - \$40

## Individual - \$25

## Student (under 18 years of age) - \$15

## EASTSIDE HERITAGE CENTER CONTACT INFORMATION

**Mailing Address:** P.O. Box 40535, Bellevue, WA 98015

**Tel:** 425-450-1049

**Fax:** 425-450-1050

**E-Mail:** [info@eastsideheritagecenter.org](mailto:info@eastsideheritagecenter.org)

**Website:** [www.eastsideheritagecenter.org](http://www.eastsideheritagecenter.org)

**McDOWELL HOUSE** (EHC Administrative Offices)

**Visiting Address:** 11660 Main Street, Bellevue, WA 98005

**Tel:** 425-450-1049

ACTIVITIES OF THE EASTSIDE HERITAGE CENTER ARE SUPPORTED BY:



HERITAGE REFLECTOR - Design/Layout: Lexi Roberts  
HERITAGE REFLECTOR © 2016 Eastside Heritage Center. All rights reserved.

---



P.O. Box 40535  
Bellevue, WA 98015