



Connections for yesterday, today, and tomorrow.

## Vision

To be a destination heritage museum and research facility that enhances community identity through the preservation and stewardship of the Eastside's history.

## Mission

To steward Eastside history by actively collecting, preserving and interpreting documents and artifacts, and by promoting public involvement in and appreciation of this heritage through educational programming and community outreach.

## In This Issue

• New EHC Website	1
• Turning Point	1
• King County Journal Closure	2
• Wish List	2
• Recent Accessions	2
• President's Message	3
• Thank You	3
• Planned Giving	3
• Happy 100th Birthdays	4
• Who Am I?	4
• In Memoriam	4
• Spring Programs	5
• Logo Photo Story	6
• Strawberry Festival 2007 - Save The Date	6
• Volunteer Corner	6
• Membership	7

## New And Improved EHC Website Debuts

If you've been to [www.eastsideheritagecenter.org](http://www.eastsideheritagecenter.org) recently, you probably noticed it looks a little different these days. The Eastside Heritage Center is proud to announce the launch of our revamped website!

This website redesign is the latest piece in integrating the new EHC logo and brand. Members of the Board of Trustees and the Marketing & Communications Committee enlisted the expertise of Nancy Caldwell of NDC Web Design to create the new site. Caldwell has designed websites for several local businesses and organizations, including the Association of King County Historical Organizations (AKCHO).

Our goal was to create a website that is informative, exciting and user friendly, so you can find what you're looking for quickly and easily. Your comments and feedback are always appreciated! Please contact Executive Director Heather Trescases at 425-450-1049 or [director@eastsideheritagecenter.org](mailto:director@eastsideheritagecenter.org) with any questions or comments you may have.

Discover  
Share  
Participate

Home  
Current Displays  
Events  
Membership  
Donate  
Volunteer  
Collections  
Education  
Services  
Bookstore

**EASTSIDE HERITAGE CENTER**

Connections for yesterday, today, and tomorrow.

The Eastside Heritage Center is committed to preserving the past as it builds community and connects people with their heritage. In addition to maintaining and preserving the largest collection of artifacts, photos and archival material related to East King County, Washington, the Eastside Heritage Center focuses on sharing this collection with the community through exhibits, books, presentations and a wide variety of education programs.

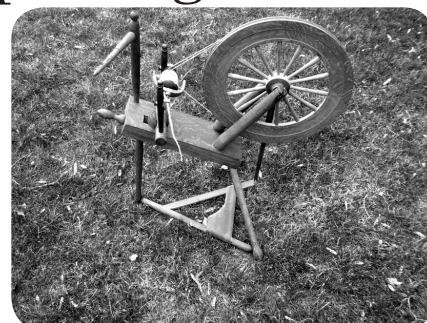
**Our History**  
The Eastside Heritage Center was established in 2001 through the merger of the Bellevue Historical Society, in Bellevue, and the Marymoor Museum of Eastside History, in Redmond. Due to King County budget shortfalls, the Marymoor Museum was asked to leave its home of 35 years, the Clise Mansion at Marymoor Park. The Museum closed its doors in December, 2002, and the collection of over 30,000 objects is now housed in offsite storage. We are developing programming for satellite exhibits to allow continued

**Get Involved**  
Volunteer opportunities available.  
New Volunteer Position Available  
Join Today

## Turning Point – The Spinning Wheel

by Ralph Pinkerton

“There’s an old spinning wheel in the parlor  
Spinning dreams of the long, long ago  
Spinning dreams of an old-fashioned garden  
And a maid with her old-fashioned beau”  
-Billy Hill



We are sure that many of our more senior members will recall that song from yesteryear. Thanks to Lee Maxwell, our education department has acquired a spinning wheel. When we have gained sufficient skill, we will be demonstrating its use during our Kelsey Creek Saturday programs.

The National Museum of American History refers to spinning as, “The simple act of drawing out a few fibers and twisting them together to form a yarn.” Simple? Easy for them to say! The reason for the twisting is to keep the thread being produced

(cont'd on pg. 6)

# King County Journal Ceases Publication

By Chris Pulliam

In 1918, a small publication known as the East Side Journal printed its first issue. It took two papers merging, 89 years and five name changes to lay what would become the King County Journal to rest.

The publication printed its last issue on Jan. 21, 2007 after its twelfth straight year of deficits. The King County Journal, along with nine sister publications, were sold to Black Press Ltd., a Canadian publisher which owns more than 100 publications in North America, in November 2006 for an undisclosed amount.

Beyond the price tag, however, some question the cost that the closing paper has had on the Eastside as a whole.

The King County Journal, under many names, has covered the eastside of King County for nearly nine decades. Whether it was the 1940 opening of Lacey V. Murrow Floating Bridge (I-90), the celebration of the completion of the remodeled Bellevue Square in 1981, or coverage of the annual Redmond Bike Derby, which started in 1939, the Journal has covered it.

The Eastside Heritage Center has been featured many times in the Journal, in stories covering the closure of Marymoor Museum to features on the EHC's Key Center mini-museum to coverage of the annual Strawberry Festival. The King County Journal was even a sponsor of the Strawberry Festival for several years.

The buyers of the King County Journal and its sister papers have reorganized the publication dates of most of them. The Auburn Reporter, Bellevue Reporter, Covington/Maple Valley Reporter, Kent Reporter, Redmond Reporter as well as the Renton Reporter – former weeklies—began publishing twice a week as of Jan. 24. The Bothell/Kenmore Reporter became a weekly. Two other community newspapers acquired by Black Press Ltd., the Mercer Island Reporter and Snoqualmie Valley Record, kept the same publishing dates.

According to the final edition of the King County Journal, "Despite frequent name changes, mergers and shifts in owners, the papers all shared a common goal: to serve as the paper of record for their respective communities in terms of news coverage and to provide a forum for the divergent viewpoints of their readers." Although the Journal is gone, their goal carries forward.

## EHC Wish List

### Collection

- Old Music Instruments: Sherman Violin
- 1940s-1950s microphone
- Yearbooks: Schools other than Bellevue
- Photos, Memorabilia and Menus of Bellevue Businesses and Restaurants: *Pink Garter*, *Petram's Dime Store*, *Merry Go Round*, *Farrells Kingen's Drive In*, *Bellevue Dick's Drive In*, *The Barb*, *Village Inn*, *The Hut*

- Photos and Memorabilia pertaining to Crossroads and Lake Hills
- Photos and Memorabilia of Willows School
- We are looking for artifacts related to the cows and dairy activity on the Eastside, including milkers, milk pails, cream separators, stanchions and calf

### Office

- Plastic Carpet Cover for under desk

## Recent Accessions

### Collection

**Gillia Barrows:** *Book of Emerson's essays circa 1905*

**Bill Damm:** *9 black and white images*

**Matt Eldridge:** *Digital images of the Bellevue crane accident*

**Diana Ford:** *Victorian twin bed and blanket, kitchen utensils*

**Victoria Fredman:** *8 PTSA scrapbooks*

**Dianne Gablenz:** *Girl Scout's scrapbook*

**Burr Johnson:** *Eastside Sportsman's sweater belonging to his father*

**Karen Klett:** *Boeing 777 commemorative pen, camera, Fredrick & Nelson boxes and other store memorabilia*

**Doug Margeson:** *The Journal American sign that used to hang outside of the original Journal American building*

**Lee Maxwell:** *Tolt High School sweater and hat, Tolt High School yearbooks, Fredrick & Nelson boxes and ephemera, circa 1930's Fredrick & Nelson high heels, turn of the century German porcelain doll*

**Mary Ellen Piro:** *Seattle Times paperboy bag, 2 pairs of 1960's shoes, several cameras, and a Discman*

**Phyllis and Doyle Sims:** *A large collection of machine tools including a lathe that is 100 years old*

**Greg Spranger:** *Matchbook from the Hill-Top Café*

**Anne Taylor:** *Lake Sammamish High School drill team pompoms, 2 records, prom mementos and a book mentioning Bellevue*

**TRF Financial and Robertson &**

**Olson Construction:** *The Larry's Markets sign*

### Education

**Lee Maxwell:** *Operational spinning wheel and table top loom for educational use at the Fraser Cabin*

# EHC President's Message

By Stu Vander Hoek



On Valentine's Day, the Eastside Heritage Center's Endorsers were invited to lunch. We shared our numerous accomplishments with about 20 of them, so that they really know how much EHC has going on. I think they were all a little surprised and hopefully impressed. One reason to get them together was to ask for their help in looking for great Board of Trustee prospects. Our Board currently has 15 Trustees and we would like to grow it to 22, or more, within the next year. A huge thank you to Kemper Development Company for hosting the great event.

Our Outreach programs are going great. We recently presented to the Japanese American Citizens League and MulvanneyG2 Architects in Bellevue. If you are interested in having a presentation about EHC given to your group, please let us know.

As usual, we need more Volunteers. With as many projects as we have going on, our ability to staff them is growing more important. Whether it's being a docent at our Mini-Museum, telling stories at the Fraser Cabin, helping at this year's Bellevue and Crossroads Farmers Markets, or being a host at the Winters House, we could always use the help. And, you'll have fun at the same time!

As I've said before, funding for all the programs and services EHC provides is critical to our success. Our capacity to provide these educational, archival, storage, and research services is only limited by our financial resources. Planned Giving is a way for you to help EHC. If you have interest in helping EHC in the future, please let us know today by contacting Heather Trescases at 425-450-1049 or [director@eastsideheritagecenter.org](mailto:director@eastsideheritagecenter.org).

## Be A Part Of Eastside History

Leave a legacy and make a planned gift to the Eastside Heritage Center.

You can ensure that the history of the Eastside is preserved for future generations by including a bequest to the Eastside Heritage Center in your will. The wording of your bequest can be as simple as:

"I bequest to the Eastside Heritage Center a gift of  
\$ \_\_\_\_\_ or \_\_\_\_\_ % of my estate."

Please remember to include our federal tax identification number, which is 91-1124636. A bequest can also take the form of stocks, bonds, mutual funds, annuities, or real estate.

A planned gift requires careful consideration and is best made with the guidance of your own financial or legal advisors. If you have included the Eastside Heritage Center in your will, or would like information on making a planned gift, please contact the EHC's Executive Director at 425-450-1049.

## Thank You



On December 8, 2006, "Santa" Reagan Dunn presented the Eastside Heritage Center with a \$10,000 contribution from the King County Council, along with a van donated through the County's Retired Vanpool Program. (From L-R, Reagan Dunn, Heather Trescases, Stu Vander Hoek).

# In Memoriam...

## Bill Brant

September 25, 1915 –  
November 26, 2006

In 1949, Bill and Beverley Brant opened Brant Photographers, Inc. in Bellevue Square. They operated their studio for 30 years before retiring to the San Juan Islands. Through the years, Bill Brant donated a collection of aerial photos of the city taken during the 1950's and 1960's and other photos to the Eastside Heritage Center archives. Also in the EHC collection are an audio and a video tape from a Winters House program in 1994. As the speaker at the program, Bill shared fascinating stories of taking photos around Bellevue, events occurring in the early days of Bellevue and of people and places.

## Warren Taylor, DDS

January 23, 1926 –  
December 31, 2006

In 1955, Warren joined Dr. George Wood in a dental practice in Bellevue. They continued to work together until Warren's retirement in 1984. He was also a founder and managing partner in the Bellevue Medical Dental Center. Warren was a charter member of the First Presbyterian Church of Bellevue, an Elder of the church and a member of the first building committee. He was instrumental in developing an archive of the church's 50-year history. Of his many interests, he was most dedicated to the art of bookbinding. He was well known and respected in the bookbinding community for his artistry and craftsmanship, particularly with fine leather bindings and gold tooling techniques. Warren donated a copy press, inkwells and a Dirigo Compass to the Eastside Heritage Center collection.

# Who Am I?



*In this wonderful photograph from the late 1800s, three unidentified people share tea in a rare interior view found among Lucile McDonald's Eastside notes. Life was not easy for the early pioneers in the dense forests near Lake Washington. They looked forward to visits and were hospitable to traveling strangers.*

*If you have any information regarding this photograph, please contact EHC's Archivist, Megan Carlisle at 425-450-1049 or email her at [archives@eastsideheritagecenter.org](mailto:archives@eastsideheritagecenter.org).*

# Happy 100th Birthday!!

Victor Scheffer  
November 27, 2006

Irvine Marr  
January 16, 2007



## EHC BOARD OF TRUSTEES

### PRESIDENT

Stu Vander Hoek

### PAST PRESIDENT

Libby Walgamott

### 1ST VICE PRESIDENT

Iris Tocher

### 2ND VICE PRESIDENT

Ross McIvor

### TREASURER

Michael Luis

### SECRETARY

Teresa Claypool

### TRUSTEE REP. TO EXEC. CMTE.

Michael Intlekofer

### GENERAL MEMBERS

Margot Blacker

Reagan Dunn

Ray Higgins

Tim Johnson

Julie Kranseler

Joe Kennedy

L. Lee Maxwell

J.P. Perugini

Lynn Sherk

Anne Taylor

### EHC STAFF

### EXECUTIVE DIRECTOR

Heather Trescases

### CURATOR OF COLLECTIONS

Carly Jo Ryan

### ARCHIVIST

Megan Carlisle

### EDUCATION COORDINATORS

Jane Morton

Barb Williams

### EHC ENDORSERS

Bob Burke

Nan Campbell

Dick Chapin

Doris Cooper

Mike Creighton

Jean Floten

Kemper Freeman, Jr.

Stacy Graven

Ken Johnsen

Leslie Lloyd

Doreen Marchione

Dan McDonald

Louise Miller

Rose Nohara

Bob Nuber

Ron Sher

Lee Springgate

Karl Thunemann

John Valaas

Bill Ptacek

Colin Radford

Dave Russell

Daphne Schneider

David Schooler

Janice & D.P. Van Blaricom

Dr. Roy P. Wahle

Bob Wallace

Rosalie Whyel

### CHARTER/ FOUNDING MEMBERS

Brad Best

John Betzozoff

C. Keith Birkenfeld

Richard & Margot Blacker

Charles Bovee

Dianna Broadie

John Cannon

Karyl Dean

Steve & Kathy Dennis

Phyllis Fenwick

Diana Ford

Peter Gulick

Birgit Hansen

Peggy Hansen

Bob Hennig

Thomas K. Hitzroth

Peter Horvitz

Karen Klett

Suzanne & Tom Knauss

Rosemary Kramer

Bill Lagen

Charles Le Warne

Anne Long

Jim & Pat Loughran

Karen & Duke Luetjen

Louis & Patti Marsh

Beatrice Mathewson

Philip Maxeiner

Lee Maxwell

John McClelland

Rosa McDonald

Louise Miller

Alex Modelski

Charles Morgan

Bob Neir

Phil & Shelley Noble

Carol & Wilson O'Donnell

Arnold Olson

Sally Polk

Connie Reed

Betty Ann Rizk

Bob & Pat Sandbo

Victor Scheffer

Daphne Schneider

Dick & Susan Schwasnick

Barbara Sharpe

William &

Virginia Thompson

Karl Thunemann

Iris Tocher

D. P & Janice Van Blaricom

Stuart Vander Hoek

Libby Walgamott

John Walker

Doug & Patti Ward

James & Gwen Warren

Robert & Barbara Welsh

Rosalie Whyel

Marcie Williams

# Spring Programs

## Heritage Afternoon Tea

Date: Saturday, May 12, 2007

Time: Seating A: 1:00pm Seating B: 3:00pm

Place: Winters House, 2102 Bellevue Way SE, Bellevue

Fee: \$15 per person (ages 10 and up)

May is  
Preservation Month

It's a wonderful time to  
get out and explore the  
Eastside's historic sites!

You are invited to an afternoon tea, served in traditional English style, at the historic Winters House in Bellevue. Sip tea, enjoy exhibits and stroll through the house and grounds of the only building in Bellevue on the National Historic Register. Eastside Heritage Center staff and volunteers will delight you with stories about the house and Eastside history. Call the Eastside Heritage Center at 425-450-1049 for more information and to reserve your place. Space is limited. Presented in partnership with the City of Bellevue.

## Fraser Cabin Heritage Programs

For the third year, the Eastside Heritage Center and Bellevue Parks and Community Services will be presenting public programs at the 1888 Fraser Cabin located at Kelsey Creek Farm Park in Bellevue. These programs are free and fun for all ages. See the schedule below.

For more information, contact the Eastside Heritage Center at 425-450-1049 or visit [www.eastsideheritagecenter.org](http://www.eastsideheritagecenter.org).

Saturday, April 28 11am - 3pm: Cabin Chores and Capers

Presented as part of the Sheep Shearing festival at Kelsey Creek Farm Park. Visitors will be immersed in the 1888 cabin life-style when they perform household chores and play "cabin" games.

Saturday, May 19 12noon - 3pm: Farm Life

Learn about farm life in the 1880's as you participate in cabin activities such as grinding corn, planting a seed to take home, watching garden tools demonstrations and dressing up in period clothing.

Saturday, June 16 12noon - 3pm: Tools and Log Cabin Construction

Enjoy the clever construction of the 1888 Fraser log cabin, watch demonstrations, "chink" the walls of model log cabins, and take home wooden craft pieces to make your own wood construction.

## Walking Tour of Historic Willowmoor

Date: Sunday, May 6, 2007

Time: 1:00pm

Place: Clise Mansion, Marymoor Park, 60046 West Lake Sammamish Pkwy NE, Redmond

Fee: \$5.00 per person

The walking tour will cover the history of Willowmoor Farm from the homesteading of the property by John Tosh, then the private ownership of James Clise, John Bratnober who called it "Northwood", Uberto Dickey and Walter Nettleton who owned Marymoor Farms and named the area Marymoor after his daughter Mary. The tour will visit the site of John Tosh's homestead, the original hunting lodge that James Clise built before the mansion, as well as the site of Mrs. Clise's greenhouses, the art gallery and the windmill. The tour will also explore the Native Americans who occupied the property periodically from 6000 BC to the historic period, the two archeological sites on the property and the significance of the artifacts found.

## Heritage Evening Program

Topic: Author Larry Karp presents his newest historical mystery, *The Ragtime Kid*.

Date: Thursday, April 19, 2007

Time: 7:00 pm

Place: Bellevue City Hall

# Getting To Know The New Logo (Part 2 of 4)



The second photo in EHC's new logo features Juanita School teacher W.D. Shannon reading at his desk in 1902.

After hearing of employment opportunities on the West Coast, Shannon left Michigan for the northwest. He obtained a teacher's certificate and worked in Auburn before being sent to Juanita in 1902. His teacher's salary was \$50 per month, which he felt would allow him to save enough to finish his university courses.

In 1904, Shannon returned to Michigan and earned a degree in civil engineering at the University of Michigan. In 1909, Shannon returned to the Seattle area and spent the next 22 years working for Stone and Webster on various electrical power projects. In 1925, a lake formed behind Puget Sound Power & Light's newly-built Baker Dam in Skagit County. This new lake was named Lake Shannon in his honor.

## Our Volunteers Are Invaluable

By Karen Klett

Note: Volunteer Week is April 15 – 21

Volunteers are not paid - not because they are worthless, but because they are PRICELESS.

Eastside Heritage Center's volunteers ARE priceless. They keep the organization running at both the McDowell and the Winters Houses.

We now have three dynamic teens on our volunteer staff. Helping Curator Carly Jo Ryan, is Jiyeon Lee, a student at Interlake High School in Bellevue. Chris Pulliam, from North Bend is in the Running Start Program at Bellevue Community College is doing data input.

We are also fortunate to have Julie Kranseler, a student at Bellevue's International School, serving on the Board of Trustees.

The volunteers staffing the Mini-Museum are doing a great job, and it would be delightful to have a few more!

And before you know it, June will be here and 200+ Strawberry Festival volunteers will be ready to make this event the best one ever! It's not too early to add your name to the list.

To join our priceless Volunteer Staff, please contact Volunteer Coordinator Karen Klett at [karenklett@eastsideheritagecenter.org](mailto:karenklett@eastsideheritagecenter.org).

*(Turning Point: The Spinning Wheel cont'd from pg. 1)*

from unraveling. Undoubtedly, the early spinning was completely a hand operation, perhaps inspired by the reed mats and woven baskets. Somewhere along the line, with the passing of time, the drop spindle was invented. This object could be weighted in such a way that it would provide the necessary twisting that would secure the thread.

Just where and when technological advancement resulted in the development of the spinning wheel is a matter of some disagreement among historians. China? India? Germany? All of these and more have been put forth as the birthplace of the spinning wheel, with a time spread between 1,000 and 1,500 years ago. But in any case, the reign of the spinning wheel was to be short compared to the history of textiles. The first textile machine of the industrial revolution was soon to appear, the spinning jenny, which could turn out eight times the amount of thread or yarn in the same amount of time.

A big "thank you" to Mike Intlekofer for his tune-up on the spinning wheel.



### SAVE THE DATE!

The Eastside Heritage Center's annual  
STRAWBERRY FESTIVAL

Saturday, June 23, 2007 from 10am-8:30pm

Sunday, June 24, 2007 from 10am-5pm.



### NEW LOCATION

Crossroads International Park in Bellevue.

If you would like to get involved  
as a Sponsor, Vendor or Volunteer,  
please contact Heather Trescases at 425-450-1049.

For more information, visit  
[www.bellevuestrawberryfestival.org](http://www.bellevuestrawberryfestival.org)

# Memberships Are Vital To Our Programs

By Chris Pulliam

Whether it is constructing displays at the Winters House, dressing in traditional 19th century garb for presentations, developing educational programming for local schools, or recording oral histories, the Eastside Heritage Center does a lot. Membership dues are essential to fund these programs, because they are one of EHC's only secure sources of income.

For each exciting program EHC puts on, there is a price tag. Membership dues also support the development of educational Treasure Boxes, which are rented out by organizations like schools and scout troops and are aligned with Washington State curriculum standards. Each Treasure Box, on average, is touched by 500 children per year – that's 5000 interactions in a box's 10-year lifespan. Dauntingly though, to develop just one more Treasure Box, it would cost EHC \$1,500. That is the equivalent of 60 new members registering under the Individual status or 38 new Family memberships.

Being an Eastside Heritage Center member has many benefits. For instance, if a school or scout troop were to join EHC at the Organizational level, they would be granted free access to EHC's archives, free Treasure Box rentals, as well as discounts on field trips and classroom presentations, in addition to the basic member benefits package. This membership would greatly reduce the cost for a school to teach their students about local history. For example, if a non-member school were to rent two Treasure Boxes, take one EHC-offered field trip and have one classroom presentation, it would cost them \$185. The same school with an Organization membership would only be charged \$ 62.50 – saving them over \$120!

The Eastside Heritage Center, through the support of its members, does a lot for the Eastside community. However, without increasing its membership base, the organization cannot operate to its fullest potential. If each current member convinced just one friend or family member to join, (only 7 cents per day cost for an Individual membership), an additional \$7,500 in revenue would be generated. With these funds, EHC could afford to design and build an extensive new exhibit at the Mini-Museum, along the lines of the existing Schoolhouse display or the General Store planned for April.

Join us in making connections for yesterday, today and tomorrow!

## Eastside Heritage Center MEMBERSHIP APPLICATION

MEMBERSHIP LEVEL:

<input type="checkbox"/> Benefactor	\$1000	<input type="checkbox"/> Contributor	\$100
<input type="checkbox"/> Steward	\$500	<input type="checkbox"/> Family	\$40
<input type="checkbox"/> Supporter	\$250	<input type="checkbox"/> Individual	\$25
<input type="checkbox"/> Organization	\$100	<input type="checkbox"/> Student	\$15

Enroll me as: ☐ New Member ☐ Membership Renewal ☐ Gift

MEMBER'S NAME

ADDRESS

CITY/STATE/ZIP CODE

PHONE

EMAIL

This membership is a gift from:

PAYMENT INFORMATION:

- ☐ Check (make checks payable to the Eastside Heritage Center)  
☐ Credit Card  
☐ Visa ☐ Master Card ☐ American Express

NAME ON CARD

CARD #

EXP. DATE V-CODE (last 3 digits on back of Visa/MC)

SIGNATURE

Additional Contribution: Total Enclosed:

☐ My company will MATCH my gift

Company Name:

The Eastside Heritage Center is a 501 (c)(3) charitable organization.

PLEASE MAIL THIS FORM AND PAYMENT TO:

Eastside Heritage Center  
P.O. Box 40535 Phone: 425-450-1049  
Bellevue, WA 98015 Fax: 425-450-1050

www.EastsideHeritageCenter.org

All Eastside Heritage Center Members receive:

- Membership Card
- Quarterly Newsletter with historical features and program updates
- Invitations to exhibits and programs
- 10% discount on books and gift shop items

Categories:

- Benefactor** - \$1,000  
Receives Steward Benefits, plus:  
Honored at Annual Event
- Steward** - \$500  
Receives Supporter benefits, plus:  
Special publication  
Curator's Tour of the collection

- Supporter** - \$250  
Receives Organization benefits, plus:  
Historic photo reproduction
- Organization** (schools, scout troops, etc) - \$100  
Receives Contributor benefits, plus:  
Free Treasure Box rentals  
Discounts on field trips and classroom presentations
- Contributor** - \$100  
Additional benefits include:  
Access to Archives fee waived
- Family** - \$40
- Individual** - \$25
- Student** (under 18 years of age) - \$15

## EASTSIDE HERITAGE CENTER CONTACT INFORMATION:

Mailing Address: P.O. Box 40535, Bellevue, WA 98015  
Tel: 425-450-1049  
Fax: 425-450-1050  
E-Mail: [director@eastsideheritagecenter.org](mailto:director@eastsideheritagecenter.org)

McDOWELL HOUSE (EHC Administrative Offices)

Visiting Address: 11660 Main Street, Bellevue, WA 98005  
Tel: 425-450-1049

WINTERS HOUSE (National Historic Site and EHC Research Services)

Visiting Address: 2102 Bellevue Way SE, Bellevue, WA 98004  
Tel: 425-450-1046 (EHC Research inquiries)  
425-452-2752 (City of Bellevue, Winters House)

### Hours of operation:

EHC Research Office Hours:  
Tuesdays, 10:00AM – 4:00PM

### Winters House Visiting Hours:

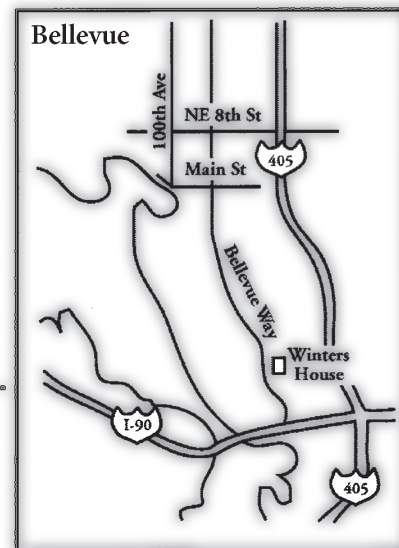
Monday to Wednesday, 10:00AM to 4:00PM  
Thursday to Saturday, 10:00AM to 2:00PM  
Closed Sunday



**CULTURE**  
KING COUNTY LODGING TAX

ACTIVITIES OF THE EASTSIDE HERITAGE CENTER ARE SUPPORTED BY

EASTSIDE HERITAGE CENTER NEWS - Editor in Chief: Lynn Sherk with Graphic Design / Layout: Louie Medina  
Eastside Heritage Center News © 2007 Eastside Heritage Center. All rights reserved.



### DIRECTIONS - WINTERS HOUSE:

From I-90, either direction, take the Bellevue Way exit. Merge onto Bellevue Way SE and drive .6 miles to the Winters House which will be on the right.

NON PROFIT ORG  
US POSTAGE  
PAID  
MEDINA WA 98039  
PERMIT NO. 6



PO Box 40535  
Bellevue, WA 98015