

# Eastside Heritage Center

MARCH 2006 • VOLUME VI • ISSUE 1

## Vision

*To be a destination heritage museum and research facility that enhances community identity through the preservation and stewardship of the Eastside's history.*

## Mission

*To steward Eastside history by actively collecting, preserving and interpreting documents and artifacts, and by promoting public involvement in and appreciation of this heritage through educational programming and community outreach.*

IN THIS

## Issue

- **EASTSIDE HISTORY TURNING POINT: COLMAN DIARIES**
- **MESSAGE FROM OUR PRESIDENT**
- **EHC WISH LIST**
- **FROM THE CURATOR'S BOX**
- **RECENT ASSESSIONS**
- **EHC SPRING AND SUMMER PROGRAM OVERVIEW**
- **NEW EHC BOARD MEMBERS**
- **VOLUNTEER NEWS**
- **MEMBERSHIP INFO**

## EASTSIDE HISTORY *Turning Points*

The Eastside Heritage Center recently received an amazing gift ~ the collection of diaries written in large part by Clarissa Colman. I've been privileged to start reading them. I plan to write a story for the *Seattle Times* about the diaries and promised that I'd write about them for this newsletter.

I didn't expect to cry. After all, Mrs. Colman wrote these words more than 100 years ago, after her husband, James, was shot on his way into Seattle. I thought I knew the story. As a devotee of local history, I read of the Eastside's first recorded murder in Lucile McDonald's writings. Awareness is one thing; getting close to the family through the firsthand account is another. The enthralling, still-unsolved mystery would make a good novel. Diana Ford has commented it would make a great movie plot. At the very least, it makes fascinating reading for anyone interested in local history. Diana, along with two other EHC volunteers, Tom Hitzroth and Jackie Smelser, have been deeply immersed in the diaries and the infamous murder mystery from the instant they were donated to the Heritage Center.

The gift of primary source material enhances the Eastside Heritage Center's collection. Such

## THE COLMAN DIARIES



Margarete Mitchell Colman and Clarissa (Colman) Fawcett, daughter-in-law and granddaughter of James & Clarissa Colman. Both Margarete and Clarissa Fawcett wrote in the diaries in the later years.

diaries are invaluable for many reasons beyond the mystery contained in this particular group.

Historians treasure primary source material such as diaries. They reveal things about daily life that can't be found even in the most detailed of newspaper articles.

For instance, I've long known that women didn't have first names until the 1970s. OK, we had given first names but in newspapers we were called Mrs. Colman or Mrs. James Colman. I recall my beloved and highly proper grandmother, who had been reared in Tennessee, always calling her neighbors Mrs. Jones or Mrs. Anderson,

# Turning Points

## THE COLMAN DIARIES



William and Agnes Mitchell, parents of Margarete Mitchell Colman, by Lake Washington before the lake was lowered as a result of the construction of the locks in Ballard.

(CONTINUED FROM PAGE 1.)

reserving first names for relatives.

Mrs. Colman does the same thing in her diaries, one place I would expect a more personal reference. She writes of people who are obviously close friends and support her through the ordeal of her missing husband and then the trial. The women remain Mrs. so-and-so. It wasn't just in newspapers!

Near the end of the collection, the diaries become just a few daily lines but they would be a gold mine for anyone interested in tracking weather. Nearly every entry starts with a weather report. I recently read line after line about "Rain, again," when the phone rang. It was my mother.

"Rain, again," she sighed. Some things never change! And others do.

In the first volume, Mrs. Colman

commented that one of their horses disappeared. Her son tracked it east as far as Squak ~ today's Issaquah. (It was incorporated as Gilman and finally changed to Issaquah in 1899.)

There's so much material in the words Mrs. Colman recorded. She talks about the Indians or Native Americans going by on the lake; she writes of the steamships that plied the waters of Lake Washington. She talks about churning butter and selling it to the store at Newcastle. She rides the train to Renton.

Her dairies bring the early Eastside to life. She writes of the Burrows family, Bechtel and the Sharps ~ pioneers in Bellevue. She talks of the Olds on Mercer Island. Reading about these people firsthand brings local history alive.

Mrs. Colman didn't begin her diaries until after her husband was killed. She starts the first one in 1886 with the line, "I am going to write down in this book all the events I can remember in the past year. What transpired in this month I cannot fix the date."

Her writing contains a flair for the dramatic ~ she talks about the last trip her daughter and husband made to Seattle.

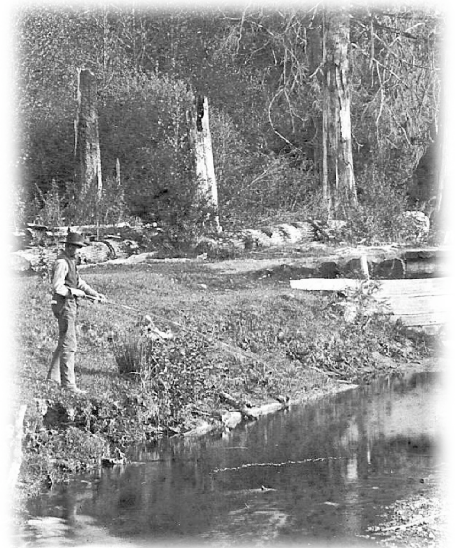
Much of what she writes, though, is simply a recording of the events. But on November 16, she writes that it is the 11th anniversary of the family's arrival in Washington.

"Then we were all together," she said.

She ends the passage with, "How terrible lonely. How can I endure it?"

That's when I put down the diary and went in search of Kleenex. There's no time limit on sharing grief. *ELC*

~ Sherry Grindeland



James Manning Colman fishing at May Creek.

# Message

## FROM OUR PRESIDENT

2006 is expected to bring EHC a number of exciting accomplishments!

We have two new Board members, Tim Johnson and JP Perugini, who are off to a fast start. Bringing new blood into our organization has a way of raising the bar for the rest of us. We continue to grow our Board with the expectation that we will have over 20 Board members by the end of the year.



EHC President, Stu Vender Hoek

We are actively working on an exciting concept that would provide EHC with what we are calling a Mini-Museum. This would provide us a storefront location to display and exhibit some of our collection to the public. Stay Tuned!

EHC has been without a curator for a while now, and we have started looking for a part-time archivist and part-time curator. Having someone onboard will help us in many aspects of maintaining and growing our collection.

Our Marketing Committee is continuing to work on a branding project for the organization. This will provide us with better tools to reach out to the Eastside community to establish more awareness of our mission.

If you want to get involved, please contact EHC at 425.450.1049.

Watch Us Grow! *EHC*

# Thank You!

We would like to extend a big thank you to the **King County Council** for a \$4,000 appropriation, which went toward the development of interpretive panels on the history of the Eastgate area and park. The panels were on display for the grand opening of the South Bellevue Community Center in December 2005 and will continue to be used at various events throughout the year.

We would also like to thank the **Bellevue Downtown Rotary** for a \$1,380 grant to purchase a high-quality, large-format, flat-bed digital scanner. In the very short time that we have had the scanner, it has become indispensable. We have been able to digitize images for a new publication we are working on, and provide more professional services to researchers. Looking forward, it will be essential as we begin digitizing our entire photo collection to ensure its preservation into the future. *EHC*

# Wish List

- ✓ Digital Camera to photograph our collection.
- ✓ \$100.00 to restore 7-inch Kestner Googly Eyed Doll.
- ✓ WWII Victory Letter (onion skin). The military would censor these before delivering.
- ✓ Dirigo Compass.
- ✓ Association Scrapbooks.
- ✓ Your Business History.
- ✓ Boy's and Men's Clothing ~ Vintage 1920-1940.

## EHC's 2006 STRAWBERRY FESTIVAL

in Old Bellevue returns on  
**Saturday, June 24** from 10 a.m. to 7 p.m.  
and **Sunday, June 25** from 10 a.m. to 5 p.m.  
If you would like to **SPONSOR** this year's  
event, contact Daniel Poe Gale at 425.453.1655  
or Heather Trescases at 425.450.1049.

For more information, visit  
[www.bellevuestrawberryfestival.org](http://www.bellevuestrawberryfestival.org)



# Curator's Box

## PHONOGRAPH NEEDLE SHARPENER



Phonograph needle sharpener.

Those of us in EHC whose memories go back far enough may recall a popular song of yesteryear entitled "Put On Those Old Records." One of the lines of the piece goes "Though they may sound scratchy, the tunes were catchy."

Well, the tunes might not have always been catchy, but most of those records, at least the popular ones, were certain to become scratchy.

The trouble was with the heavy playing arm and those steel needles that wreaked havoc with the records' grooves. We have a good representative collection of records going back to the 1920s and it's easy to tell which ones were played over and over again.

A number of different ideas were tried to minimize the damage, one being the use of fiber needles made from reeds, wood, etc. The problem increased as the needle became dull ~ and our artifact this issue addressed that problem. It is a phonograph needle sharpener. But I'll have to admit I don't

know how effective it was, as I don't remember ever seeing one except this item from our collection. By the end of the late '30s, technology was improving and extended the life expectancy of those old records.

Some wit once commented that the best things about any popular music was that it didn't stay popular all that long. I can recall stopping up by the neighborhood soda fountain for a 5-cent ice cream cone and hearing Teresa Brewer pleading for the upteenth time for someone to "put another nickel in, in the nickelodeon, all I want is loving you and Music, Music, Music." *EMC*

~ Article by Ralph Pinkerton and  
Photograph by Mike Intlekofer

# RECENT Accessions

## STEPHEN EASTERDAY:

Photo of the Pefley's Low Firs Restaurant dining room at Houghton (currently the Foghorn Restaurant).

## JOYCE CROOKS:

Eve Savage's teaching career scrapbook.

## HUNTS POINT GARDEN CLUB:

History, minutes, photos, clippings and ephemera.

## ARDIS ODLE ASHTON:

Bellevue High School Annuals, Class Photos from the Main Street School, Bellevue Grade School and Union S High School belonging to her father, M. Frank Odle.

## LORRAINE WELTZIEN:

Lakeside Registered Nurses Association history, minutes, membership lists and ephemera.

## KAREN KLETT:

Two Frederick and Nelson credit cards.

## JERRY & MARY ELLEN PIRO:

Bellevue postcards.

## MADELEINE HAGEN:

Collection of artifacts including personal traveling sets from the late 1920s and 30s.



Main Street School class picture, donated by Artis Odle Ashton.



Bellevue Grade School class photo, 1923, donated by Artis Odle Ashton.

# Upcoming EHC Programs

## WINTERS HOUSE

### WINTERS HOUSE RESTORATION & NOMINATION PROCESS

DATE: Thursday, April 20, 2006

TIME: 7:00 p.m.

PLACE: Winters House, 2102 Bellevue Way SE

A panel of speakers, including Kate Krafft and Mark Morden, will talk about the restoration and preservation of the Winters House, as well as the process of nominating it for the National Register of Historic Places.

### WINTERS HOUSE AFTERNOON TEA

DATE: Saturday, May 13, 2006

TIME: 2 sittings: 1:00 p.m., 3:00 p.m.

PLACE: Winters House, 2102 Bellevue Way SE

FEE: \$10.00 per person

EHC and Bellevue Parks and Community Services invite you to meet with friends while enjoying afternoon tea served in traditional English style. Stroll the lovely grounds surrounding the 1929 historic house. Join tour guides to learn about its history and special exhibits. Sign up for one of the two sittings by calling the City of Bellevue Parks Department at 425.452.6881. Please be prompt for your sitting. This event is for ages ten and up. Seating is limited so register soon.

## WILLOWMOOR

### WALKING TOUR OF HISTORIC WILLOWMOOR

DATE: Sunday, June 4, 2006

TIME: 1:00pm

PLACE: Marymoor Park, meet at the Clise Mansion

FEE: \$5.00 per person

The walking tour will cover the history of Willowmoor Farm from the time of the homesteading of the property by John Tosh, then the private ownership of James Clise, John Bratnobar who called it "Northwood," Uberto Dickey and Walter Nettleton who owned Marymoor Farms and named the area Marymoor after his daughter Mary. We will visit the site of John Tosh's homestead, the original hunting lodge that James Clise built before the mansion. We will look at where Mrs. Clise's greenhouses were, the art gallery, the windmill and finish at two Native American sites on the property. We will discuss the ages of the sites, and look at some replicas of the tools that were found there as well as look a little into who the Native Americans were who occupied the property periodically from 6000 BC to the historic period.

## FRASER CABIN

*For the second year, the Eastside Heritage Center and Bellevue Parks and Community Services will be presenting public heritage programs at the 1888 Fraser Cabin located at Kelsey Creek Farm Park in Bellevue. These programs are free and fun for all ages.*

### FARM LIFE

DATE: Saturday, May 20

TIME: 12:00 noon to 3:00 p.m.

Learn about farm life in the 1880s as you view and handle farm tools, grind corn, wear period clothing and plant a seed to take home.

### TOOLS AND LOG CABIN CONSTRUCTION

DATE: Saturday, June 17

TIME: 12:00 noon to 3:00 p.m.

Enjoy the clever construction of the 1888 Fraser log cabin, watch tool demonstrations and handle tools used to build log cabins. Build a model log cabin and take some wood pieces home to build your own wood construction.

### CABIN CAPERS AND CHORES

DATE: Saturday, July 15

TIME: 12:00 noon to 3:00 p.m.

Become an 1888 log cabin settler when you play games, wash and dry clothes, beat rugs, hunt for eggs, dress up in period clothing, grind wheat and pump water using the old hand pump.

## LEWIS CREEK PARK

### LEWIS CREEK PARK NATIVE PLANT WALK

DATE: Saturday, April 29, 2006

TIME: 10am to 11:30pm

PLACE: Lewis Creek Park

FEE: \$5.00 per person

The Eastside Heritage Center and Bellevue Parks and Community Services have partnered to present a program at Lewis Creek Park in Bellevue. Join EHC Education Coordinator Barb Williams for an interpretive walk to learn about the native plants, and ways local Native Americans used them to support their daily needs. Wear all-weather clothing and walking shoes. For ages ten and up. Pre-registration is required. Call the City of Bellevue Parks Department at 425.452.6881 to register.

**EASTSIDE  
HERITAGE CENTER  
BOARD OF TRUSTEES:**

**PRESIDENT**

Stu Vander Hoek

**PAST PRESIDENT**

Libby Walgamott

**1ST VICE PRESIDENT**

Iris Tocher

**2ND VICE PRESIDENT**

Ross McIvor

**TREASURER**

Michael Luis

**SECRETARY**

Teresa Claypool

**TRUSTEE REP. TO EXEC. COM.**

Michael Intlekofer

**GENERAL MEMBERS**

Margot Blacker

Reagan Dunn

Tim Johnson

L. Lee Maxwell

J.P. Perugini

Lynn Sherk

Anne Taylor

**ADMINISTRATION STAFF:**

**EXECUTIVE DIRECTOR**

Heather Trescases

**EDUCATION**

**COORDINATORS**

Jane Morton

Barb Williams



**NEW BOARD MEMBERS:  
TIM JOHNSON & J.P. PERUGINI**

Although **TIM JOHNSON** grew up in California, he has called Bellevue his home for the past 38 years. During the past four years, he and his wife Edie have lived in a Clyde Hill home built in 1913. Two years ago, Tim retired as a Deputy Police Chief with the Bellevue Police Department after 35 years of service. During the past 25 years, he has served in a number of volunteer positions, including the board of trustees for: Youth Eastside Services; Make-A-Wish Foundation of Alaska, Montana, Northern Idaho and Washington; The Antique and Classic Boat Society, Pacific Northwest Chapter; and is currently the adult Co-Chair for Bellevue Youth Link. Tim was also a wish granting volunteer with Make-A-Wish, past Chair of the Board of Trustees for Make-A-Wish and is past President of The Antique and Classic Boat Society. He is also a graduate of the Advance Bellevue program. In addition to his interest in antiques, which dates back to his high school days, his hobbies include building and restoring mahogany speed boats, reading Northwest Indian stories, working on collector cars and collecting and restoring early kerosene, and electric lighting.

**J.P. PERUGINI** is a principle owner of Andy Mirkovich Productions, a Bellevue based Corporate Event, Media and Entertainment business. He is a Certified Meeting Professional (CMP), producing high level corporate and entertainment events, including the City of Bellevue's 50Fest. J.P. grew up traveling extensively throughout the United States and the world as a dependent of an Air Force father. These experiences have helped to shape his understanding and view of both the contemporary and historical makeup of our culture. He received his bachelor's degree in History and European Diplomacy from Western Washington University in 1981. J.P. lives in Redmond with his wife Joan, son Anthony, and daughter Lina. *EHC*

**EHC ENDORSERS':**

Bob Burke  
Nan Campbell  
Dick Chapin  
Doris Cooper  
Mike Creighton  
Jean Floten  
Kemper Freeman  
Stacy Graven  
Ken Johnsen  
Leslie Lloyd  
Doreen Marchione  
Dan McDonald  
Louise Miller  
Rose Nohara  
Bob Nuber  
Bill Ptacek  
Colin Radford  
Dave Russell  
Daphne Schneider  
David Schooler  
Ron Sher  
Lee Springgate  
Karl Thunemann  
John Valaas  
Janice and D.P. Van Blaricom  
Dr. Roy P. Wahle  
Bob Wallace  
Rosalie Whyel

**BLANK GREETING CARDS FEATURING  
ARTWORK OF LOCAL SETTINGS \$4<sup>00</sup>**

Reproductions of American Primitive-style paintings of Eastside settings ~ such as the historic McDowell House, the Winters House and the Medina Market ~ by local artist, Patti Simpson Ward. These blank cards feature landmarks and well-known settings from several Eastside communities including Medina, Bellevue, Redmond, Woodinville, Sammamish and Issaquah.

To order greeting cards, leave a message with Bob Johnson of EHC at 425.450.1049.



*"Springtime at the Shumway Mansion (Kirkland, WA)"*  
Patti Simpson Ward ©2006

# Volunteer News

All year long, our volunteer staff keep our programs running and lend their individual talents and expertise in countless ways, from collections management to Winters House hosting. But once a year, our volunteer ranks swell to over 150 folks to help run the Strawberry Festival in Old Bellevue. All agree that this is the most fun of all! We need your help to make the 2006 Festival the biggest success ever! So, please fill out the Volunteer Application Form included in this newsletter, send it in and we'll find the perfect place for you.

Also, let's welcome our newest volunteers Donna Hart, who is helping with collections at the McDowell House and Bob Johnson, who is a new Winters House Host.

Please contact Karen Klett, Volunteer Coordinator, at 425.450.1049, or e-mail [karenklett@eastsideheritagecenter.org](mailto:karenklett@eastsideheritagecenter.org), to learn more about volunteer opportunities at the Eastside Heritage Center.

## THIS IS YOUR CHANCE TO GET INVOLVED!

EHC's Marketing and Communication Committee is in the process of developing a Speaker's Bureau. We are looking for volunteers to help get the word out about Eastside Heritage Center's mission and programs. EHC will provide volunteers with the message, associated materials and training from a professional instructor on how to speak to groups. We expect the training will be four hours in length, held in two, two-hour blocks. You could expect to spend about four hours per month actually talking with groups. This would include your preparation and travel time. All you need to do is contact Karen Klett at 425.450.1049 to volunteer. This is a great opportunity for you to become more involved at EHC. *EHC*



Please cut out this form and mail it with your check to Eastside Heritage Center • PO Box 40535 • Bellevue, WA 98015

### MEMBERSHIP TYPE

Please check the appropriate circles:

- ☐ Student / Senior ~ \$15  
☐ Individual ~ \$25  
☐ Family ~ \$40  
☐ Friend / Organization ~ \$100  
☐ Steward ~ \$250  
☐ Sponsor ~ \$500  
☐ Benefactor ~ \$1,000
- ☐ New Member  
☐ Membership Renewal  
☐ I'd like to volunteer 2 hours per month!

FOR OFFICE USE ONLY

Date \_\_\_\_\_

Check # \_\_\_\_\_ Amount \_\_\_\_\_

# Membership

## INFORMATION

### ALL MEMBERS RECEIVE:

- Newsletter
- Notice of exhibits and programs

### CATEGORIES:

- STUDENT / SENIOR (Age 62) \$15

- INDIVIDUAL \$25

- FAMILY \$40 (Two adults and children living in the same household)

- FRIEND / ORGANIZATION \$100

- STEWARD \$250

Members also receive an invitation to Curator's Tour of the collection

- SPONSOR \$500

~ Same as "Steward"

Members also receive one complimentary business card ad in the newsletter

- BENEFACTOR \$1,000

~ Same as "Sponsor"

Members also receive invitations to special events

Join us in preserving, supporting and interpreting the heritage of the Eastside for those who come after us.

NAME \_\_\_\_\_

ADDRESS \_\_\_\_\_

CITY \_\_\_\_\_

STATE \_\_\_\_\_

ZIP \_\_\_\_\_

TEL \_\_\_\_\_

E-MAIL \_\_\_\_\_

## EASTSIDE HERITAGE CENTER ADMINISTRATION OFFICES

Mailing Address: PO Box 40535, Bellevue, WA 98015

Tel: 425.450.1049

Fax: 425.450.1050

E-Mail: [director@eastsideheritagecenter.org](mailto:director@eastsideheritagecenter.org)

## WINTERS HOUSE

Mailing Address: PO Box 40535, Bellevue, WA 98015

Visiting Address: 2102 Bellevue Way SE, Bellevue, WA 98015

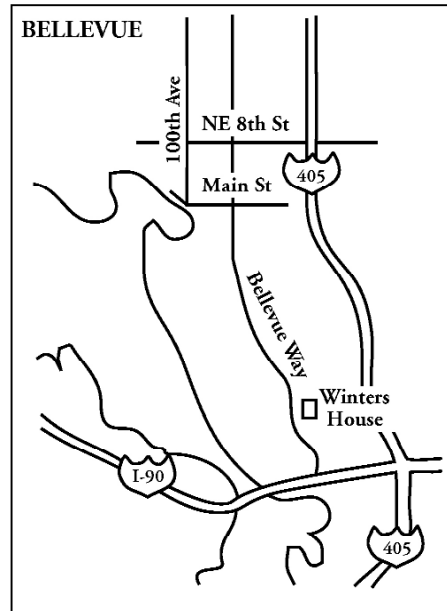
Tel: 425.450.1046 (Research inquiries)

E-Mail: [director@eastsideheritagecenter.org](mailto:director@eastsideheritagecenter.org)

## HOURS OF OPERATION:

Office Hours: Tuesday ~ 10:00 a.m. to 4:00 p.m.

Visiting Hours: Monday to Saturday ~ 10:00 a.m. to 4:00 p.m.



## DIRECTIONS ~ WINTERS HOUSE :

From I-90, either direction, take the Bellevue Way exit. Merge onto Bellevue Way SE and drive .6 miles to the Winters House which will be on the right.

EASTSIDE HERITAGE CENTER NEWS ~ Editor in Chief: Lynn Sherk with Graphic Design / Layout: Patti Simpson Ward  
Eastside Heritage Center News ©2006 Eastside Heritage Center. All rights reserved.

NON PROFIT ORG  
U S POSTAGE  
PAID  
MEDINA WA 98039  
PERMIT NO. 6

Eastside Heritage Center  
PO Box 40535  
Bellevue, WA 98015