

US 278 Corridor Improvements

Stakeholder Meeting

March 19, 2019



Meet the Team



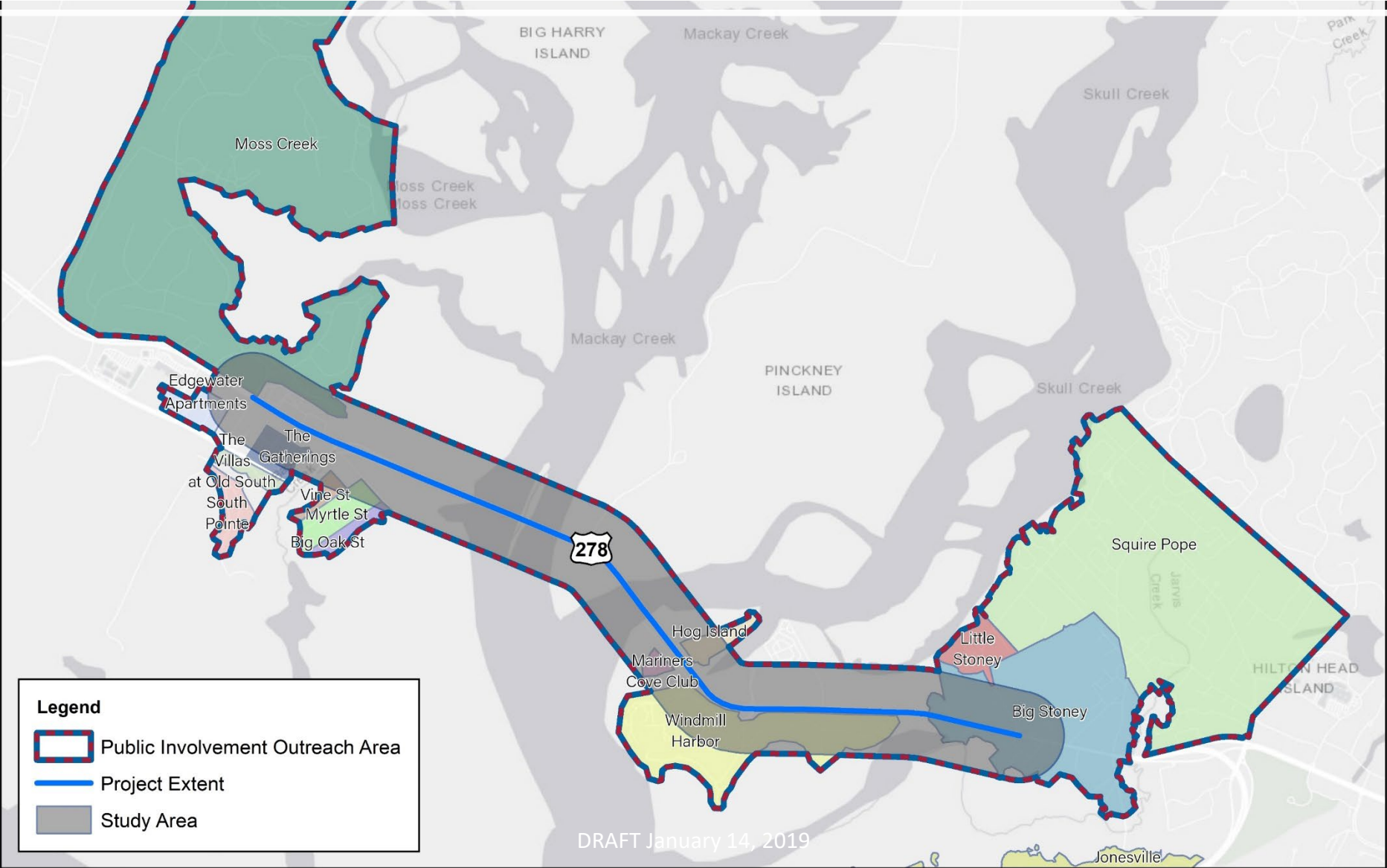
Craig Winn, PE, CFM
SCDOT Project Manager



Megan Groves, EIT
SCDOT Assistant Project Manager



Project Scope & Needs



Stakeholder Engagement Plan

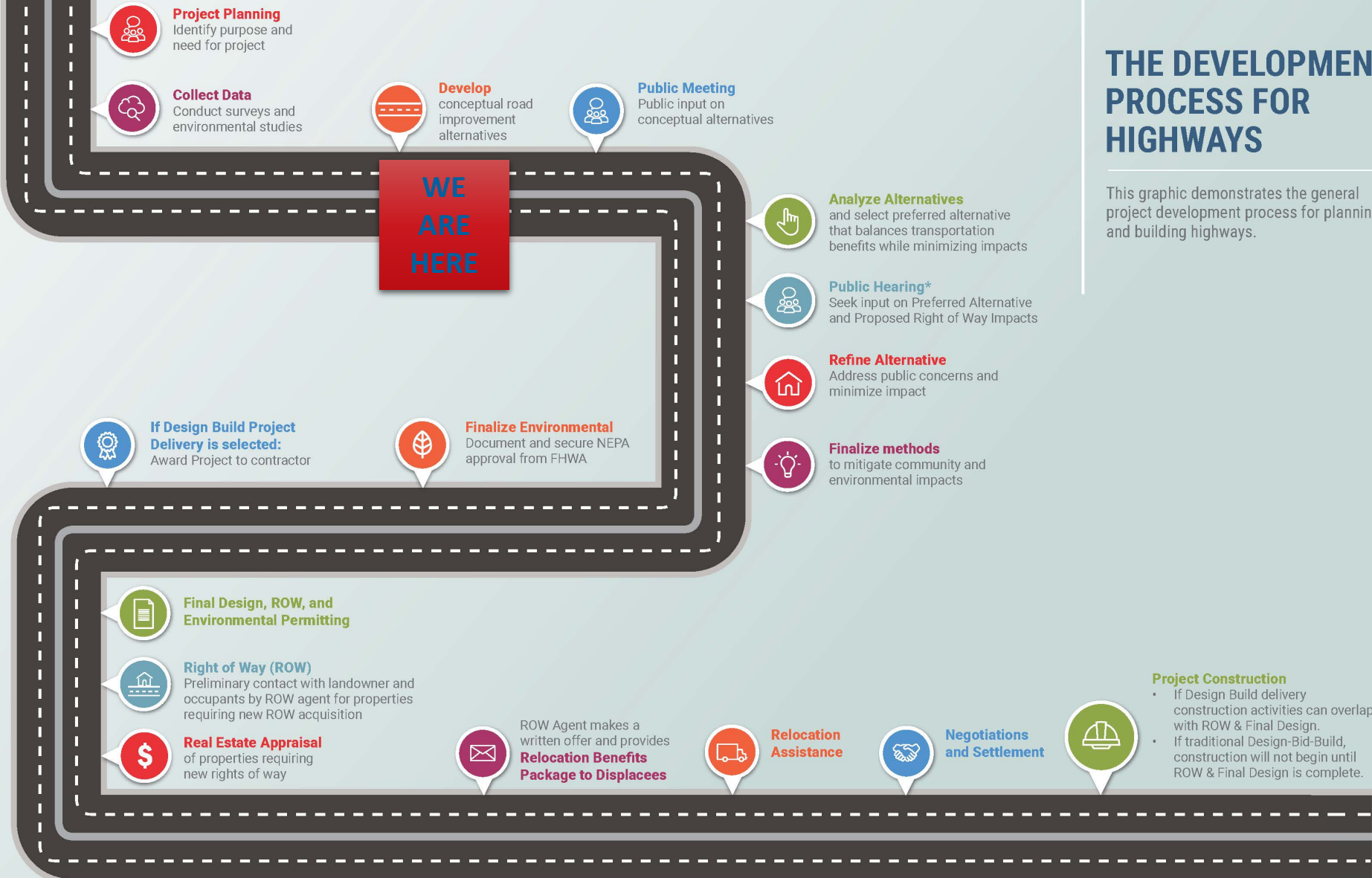


Purpose: Provide meaningful engagement opportunities for a full cross-section of the local population, representing diverse interests and communities

- **Provide Updates** on the project to disseminate
- **Seek Input** on design alternatives, communications, understanding the local landscape

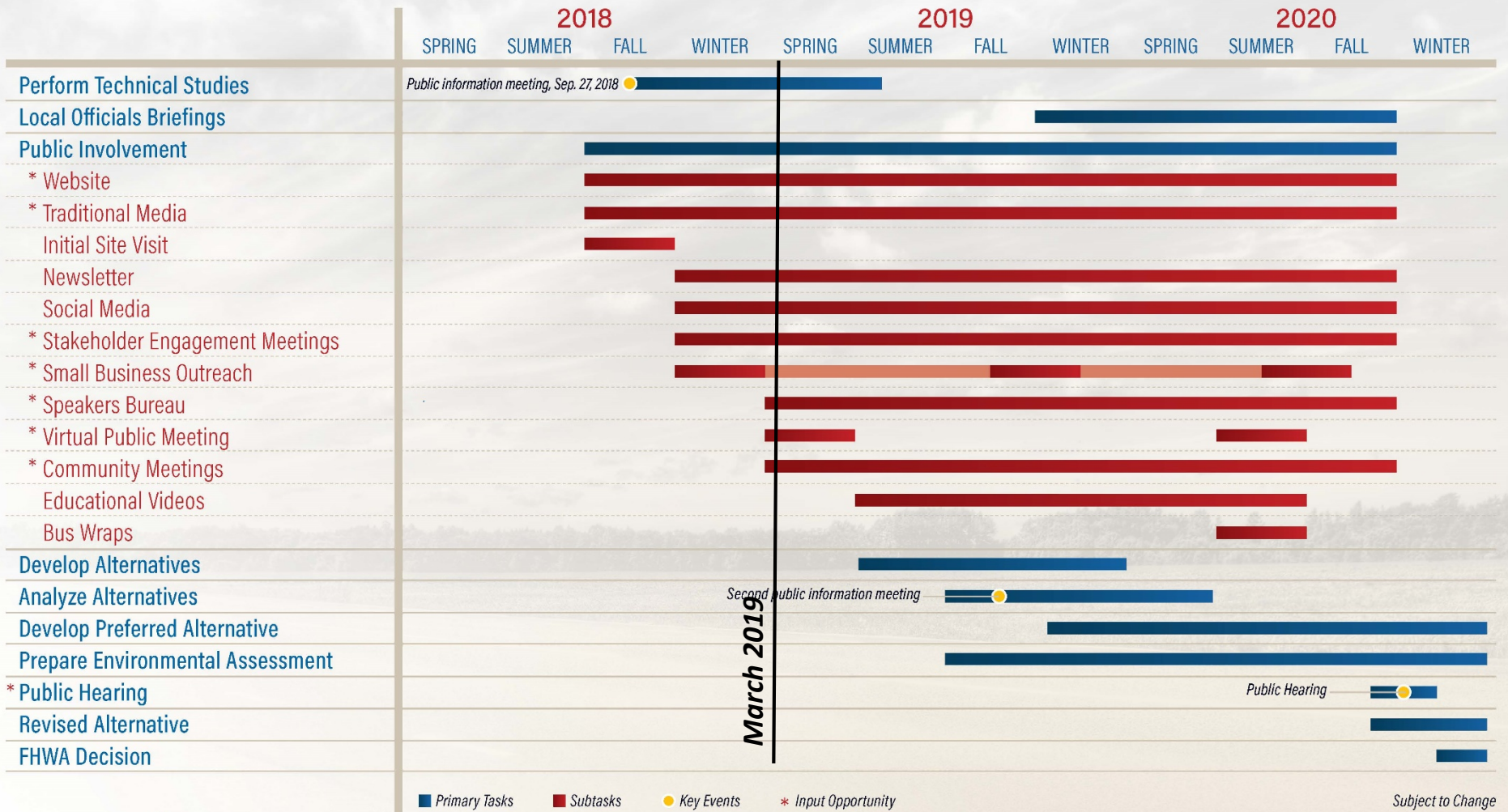
THE DEVELOPMENT PROCESS FOR HIGHWAYS

This graphic demonstrates the general project development process for planning and building highways.



*Process depicted on this graphic is for projects being developed under an Environmental Assessment or Environmental Impact Statement; smaller projects developed under a Categorical Exclusion do not require a Public Hearing.

ANTICIPATED NEPA SCHEDULE



Field Studies: Environmental

Completed

- ✓ Developed an environmental base map to identify significant human & natural features
- ✓ Identified wetlands using aerial photography, topographic maps, soil surveys, LIDAR, NWI mapping, & Remote Sensing Data
- ✓ Completed ambient noise measurements for the upcoming noise analysis
- ✓ Presented the project to state & federal agencies for input
- ✓ Met with Pinckney Island National Wildlife Refuge



Field Studies: Environmental

A Look Ahead

- Noise analysis
- Following the alternatives analyses, wetland/stream field work will begin
- Based on specific survey windows for threatened & endangered (T&E) species, will complete field work Spring 2019



Field Studies: Engineering

Completed

- ✓ Survey work in the field
- ✓ Existing Bridge Inspections
- ✓ Land-based Geotechnical Exploration for the Bridge Design needs



Field Studies: Engineering

A Look Ahead

- Water-based Geotechnical Exploration for the Bridge Design - tent. April 2019
 - *Barge access to sample soils underwater*
- Preliminary Stormwater exploration - May 2019
 - *Identifying pipe inlets & outlets with elevation data*
- Survey crews to identify obscure areas not identified with LiDAR



Purpose & Need: Draft

The purpose of this project is to **increase capacity** and **reduce congestion** along US 278 from Moss Creek Drive to Squire Pope Road.



Capacity



Congestion

Range of Alternatives: *DISCUSSION*

- All options on the table
- Need local input to capture local preferences

Range of Alternatives: Workshop



Where would you draw the lines?

Draw it.

What are your biggest concerns?

Circle, write comments.

Range of Alternatives: Visual Preferences Survey

Minimal Range



Maybank Highway to
John's Island/ West Ashley

Medium Range



Ben Sawyer Bridge to
Sullivan's Island/ Mount
Pleasant

Maximum Range



Ravenel Bridge to Mount
Pleasant/ Charleston

Public Involvement: March Update



Public Involvement Plan



Public Involvement: Mark Your Calendars



**Stakeholder
Meeting**
June 25, 2019



**Public Information
Meeting/ Virtual Public
Information Meeting**
Fall 2019

Public Involvement: Comments



www.SCDOT278Corridor.com



info@SCDOT278Corridor.com



Facebook.com/SCDOT278Corridor



[@SCDOT278Corridor](https://twitter.com/SCDOT278Corridor)



Craig Winn, PE, CFM
Project Manager
SCDOT