

US 278 Corridor Improvements

Stakeholder Meeting 3
September 19, 2019



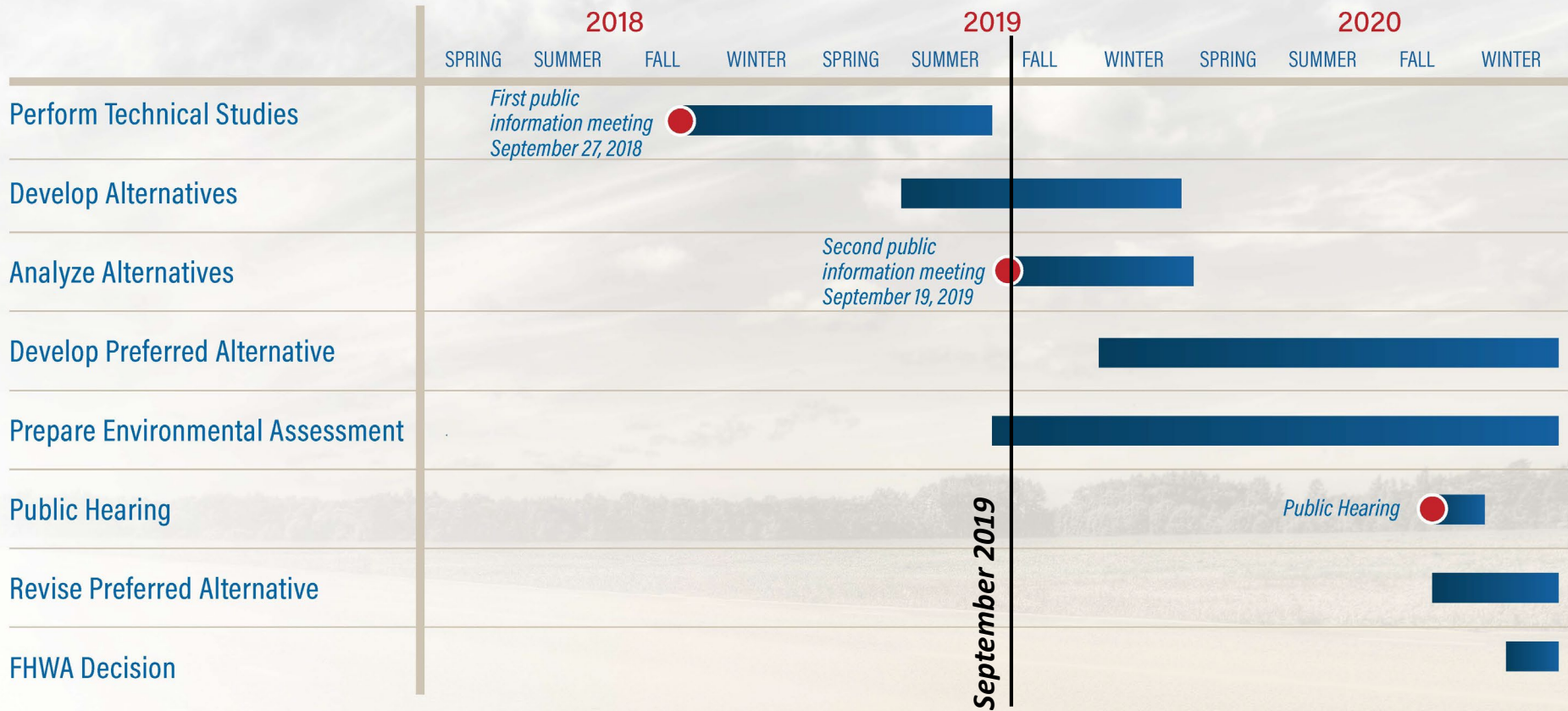
THE DEVELOPMENT PROCESS FOR HIGHWAYS

This graphic demonstrates the general project development process for planning and building highways.



*Process depicted on this graphic is for projects being developed under an Environmental Assessment or Environmental Impact Statement process. The process for Design-Bid-Build projects is similar but does not include the Design-Build phase.

ANTICIPATED NEPA SCHEDULE



Public Involvement:

You are invited today!



Public Information Meeting

September 19, 2019

5:00-7:00PM

Boys & Girls Club of Hilton Head Island

(Stakeholders are invited to come early at 4:00PM)

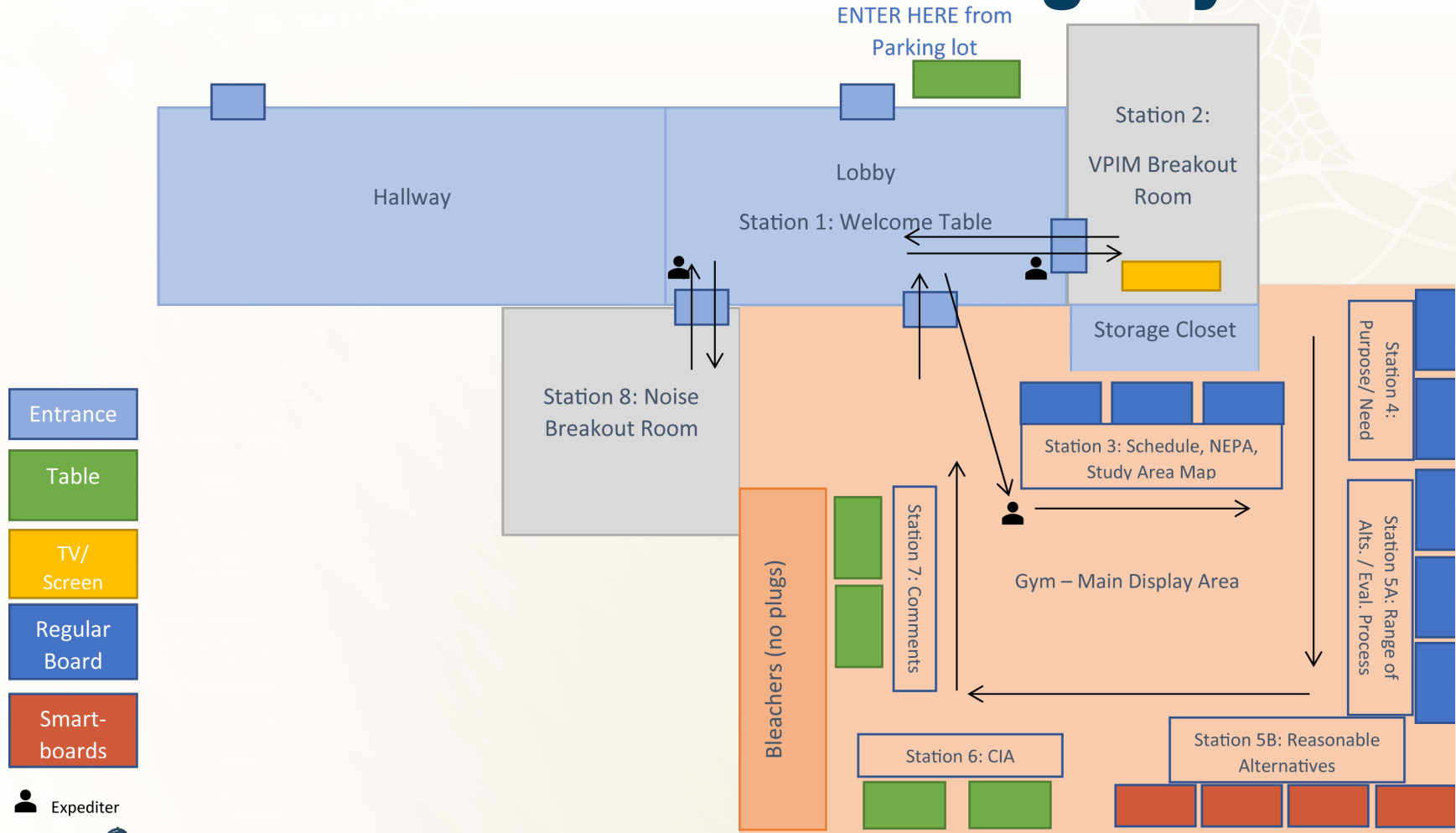
Virtual Public Information Meeting

www.SCDOT278Corridor.com

Runs Through October 18th, 2019



Public Information Meeting Layout



Virtual Public Information Video



Purpose & Need

The purpose of this project is to **address structural deficiencies** at the existing eastbound Mackay Creek bridge, as well as **increase capacity** and **reduce congestion** along US 278 from Moss Creek Drive to Spanish Wells Road.



**Structural
Deficiencies**

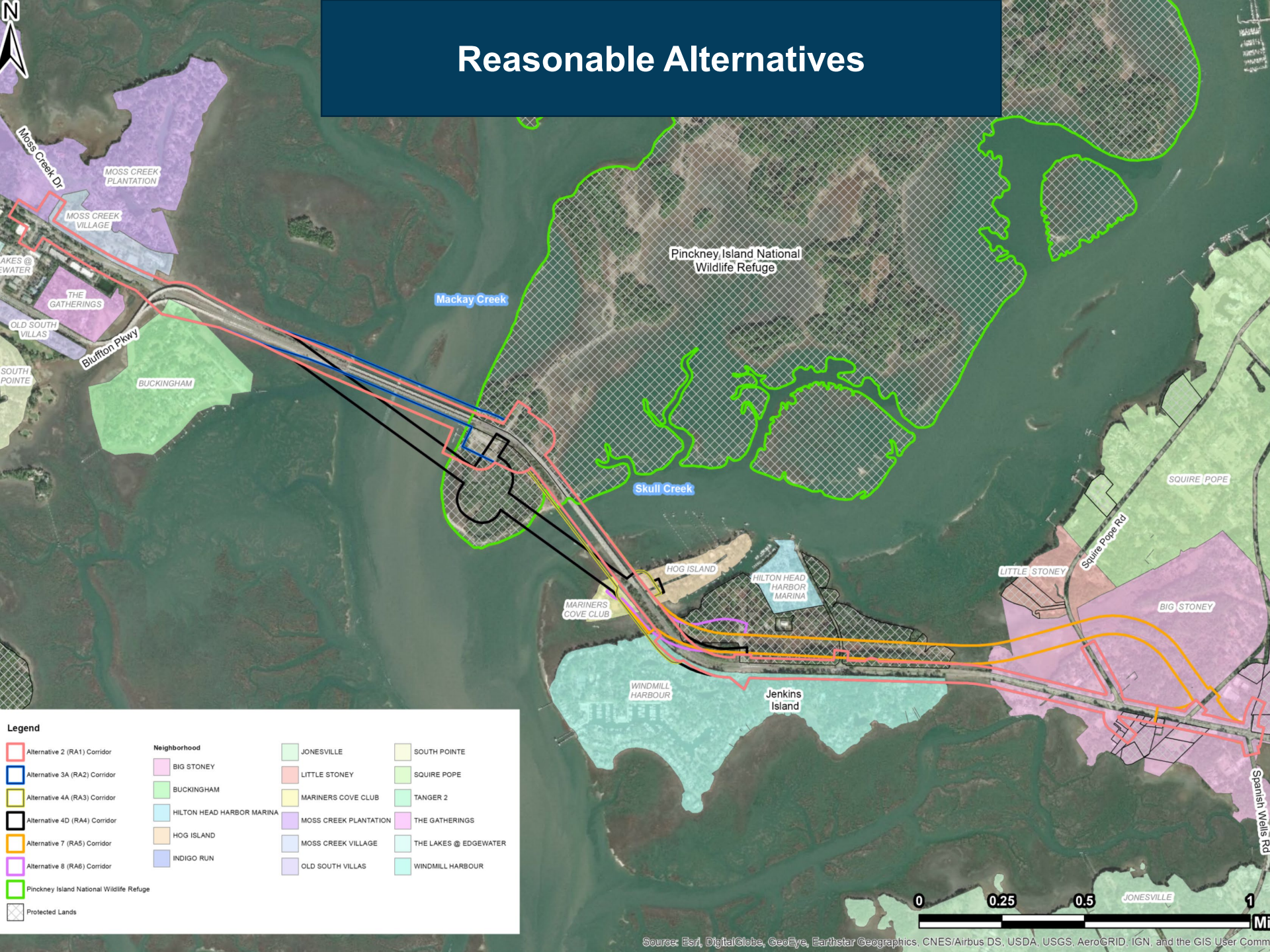


Capacity



Congestion

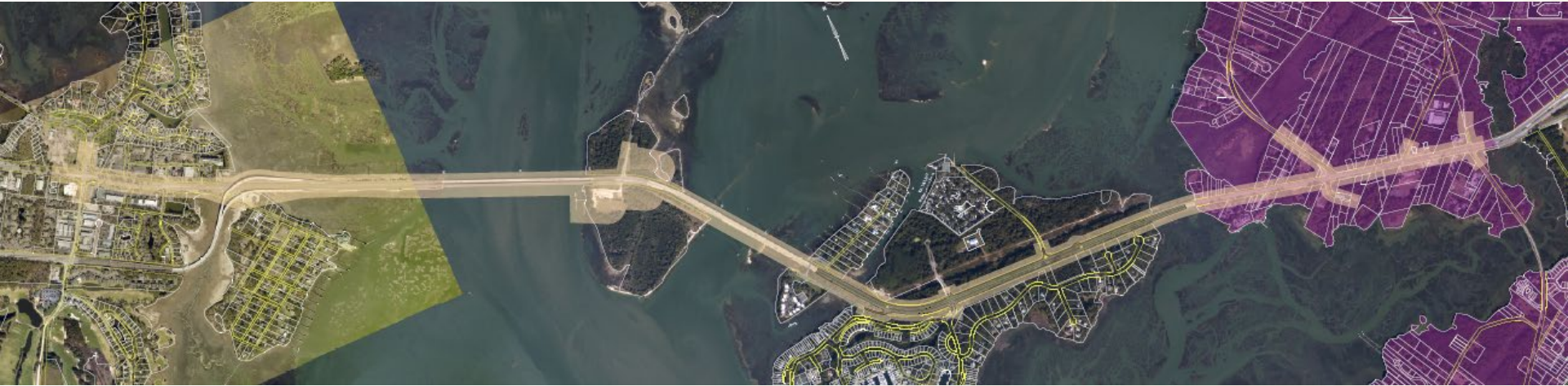
Reasonable Alternatives



Legend

Alternative 2 (RA1) Corridor	Neighborhood	JONESVILLE	SOUTH POINTE
Alternative 3A (RA2) Corridor	BIG STONEY	LITTLE STONEY	SQUIRE POPE
Alternative 4A (RA3) Corridor	BUCKINGHAM	MARINERS COVE CLUB	TANGER 2
Alternative 4D (RA4) Corridor	HILTON HEAD HARBOR MARINA	MOSS CREEK PLANTATION	THE GATHERINGS
Alternative 7 (RA5) Corridor	HOG ISLAND	MOSS CREEK VILLAGE	THE LAKES @ EDGEWATER
Alternative 8 (RA6) Corridor	INDIGO RUN	OLD SOUTH VILLAS	WINDMILL HARBOUR
Pinckney Island National Wildlife Refuge			
Protected Lands			

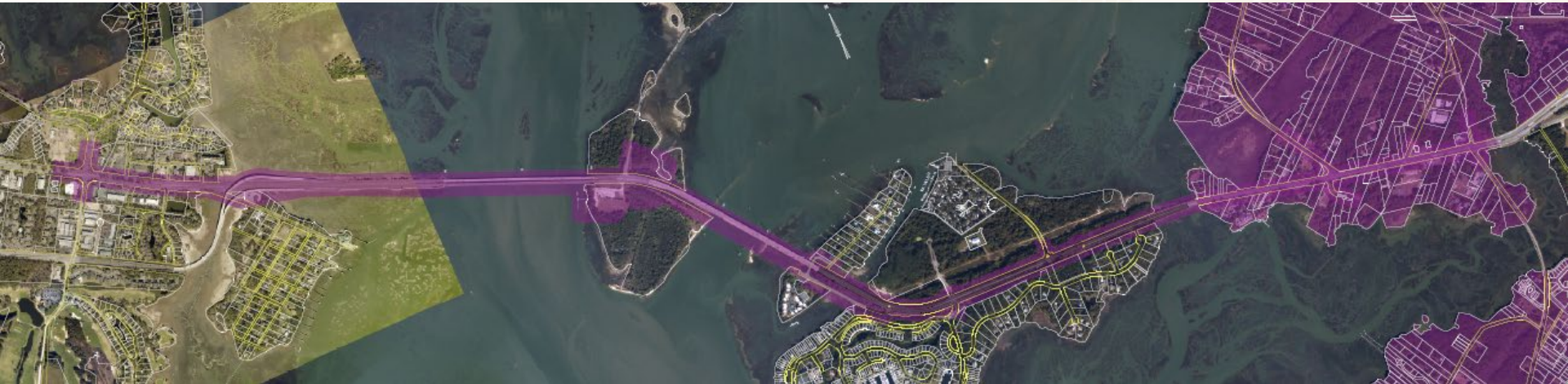
Alternative 1 (RA 1)



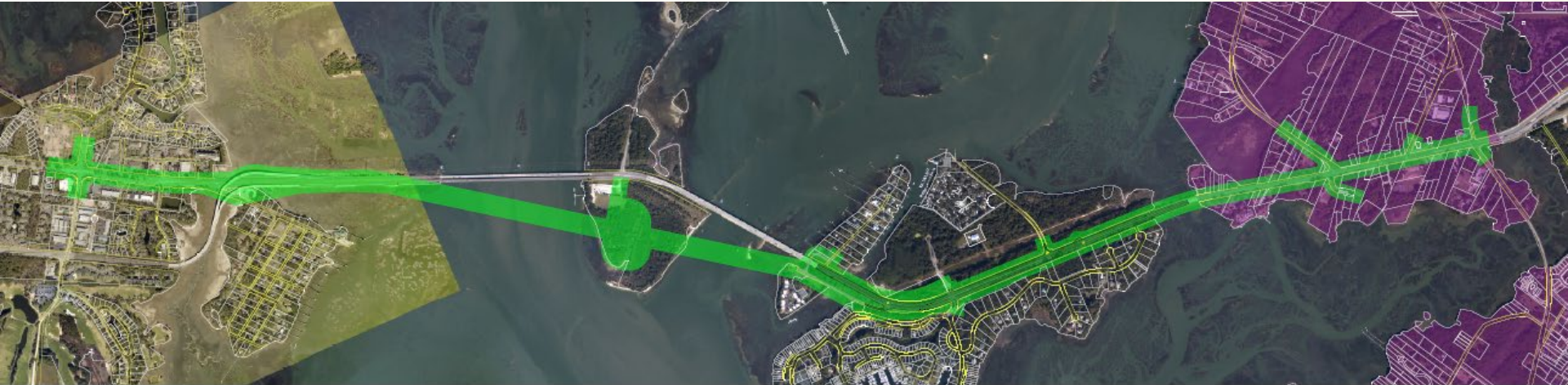
Alternative 2 (RA 2)



Alternative 3 (RA 3)



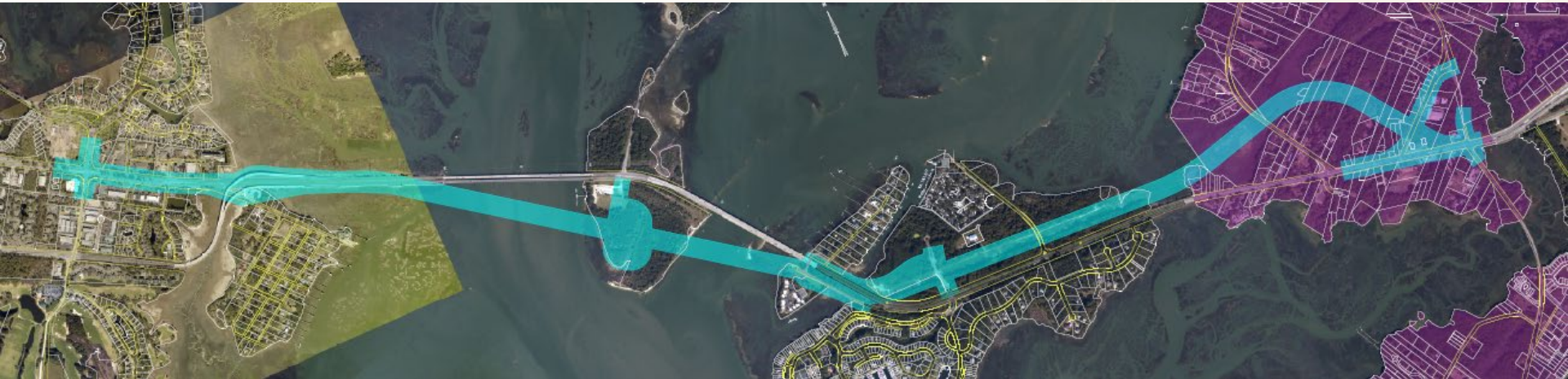
Alternative 4 (RA 4)



Alternative 5 (RA 5)

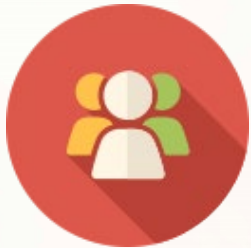


Alternative 6 (RA 6)



Your Role as a Stakeholder

Moving Forward



Stakeholders are a full cross-section of the local population, representing diverse interests and communities. Their role is to:

- **Provide Updates** on the project and disseminate information to their respective communities
- **Provide Input** on design alternatives, communications, and understanding the local landscape that will be incorporated along with other feedback in the decision-making process



Contact



www.SCDOT278Corridor.com



info@SCDOT278Corridor.com



Facebook.com/SCDOT278Corridor



[@SCDOT278Corridor](https://twitter.com/SCDOT278Corridor)



Craig Winn, PE, CFM
Project Manager
SCDOT