

# US 278 Corridor Improvements

Beaufort County Update

February 16, 2021





# Project Management



# Agenda

- 1 Project Management/Status Update
- 2 Community Impacts & Enhancements
- 3 Next Steps
- 4 Public Hearing Engagement Methods



# Purpose & Need

The purpose of this project is to address structural deficiencies at the existing eastbound Mackay Creek bridge and reduce congestion along US 278 from Moss Creek Drive to Spanish Wells Road.



**Structural  
Deficiencies**



**Congestion**



---Public Engagement---



# The NEPA Process

## Start the Environmental Assessment

Public Information Meeting **1**

Perform Technical Studies **2**

Develop Alternatives **3**

Analyze Alternatives **4**

Second Public Information Meeting **5**

Develop Preferred Alternative **6**

Prepare Environmental Assessment **7**

Public Hearing **8**

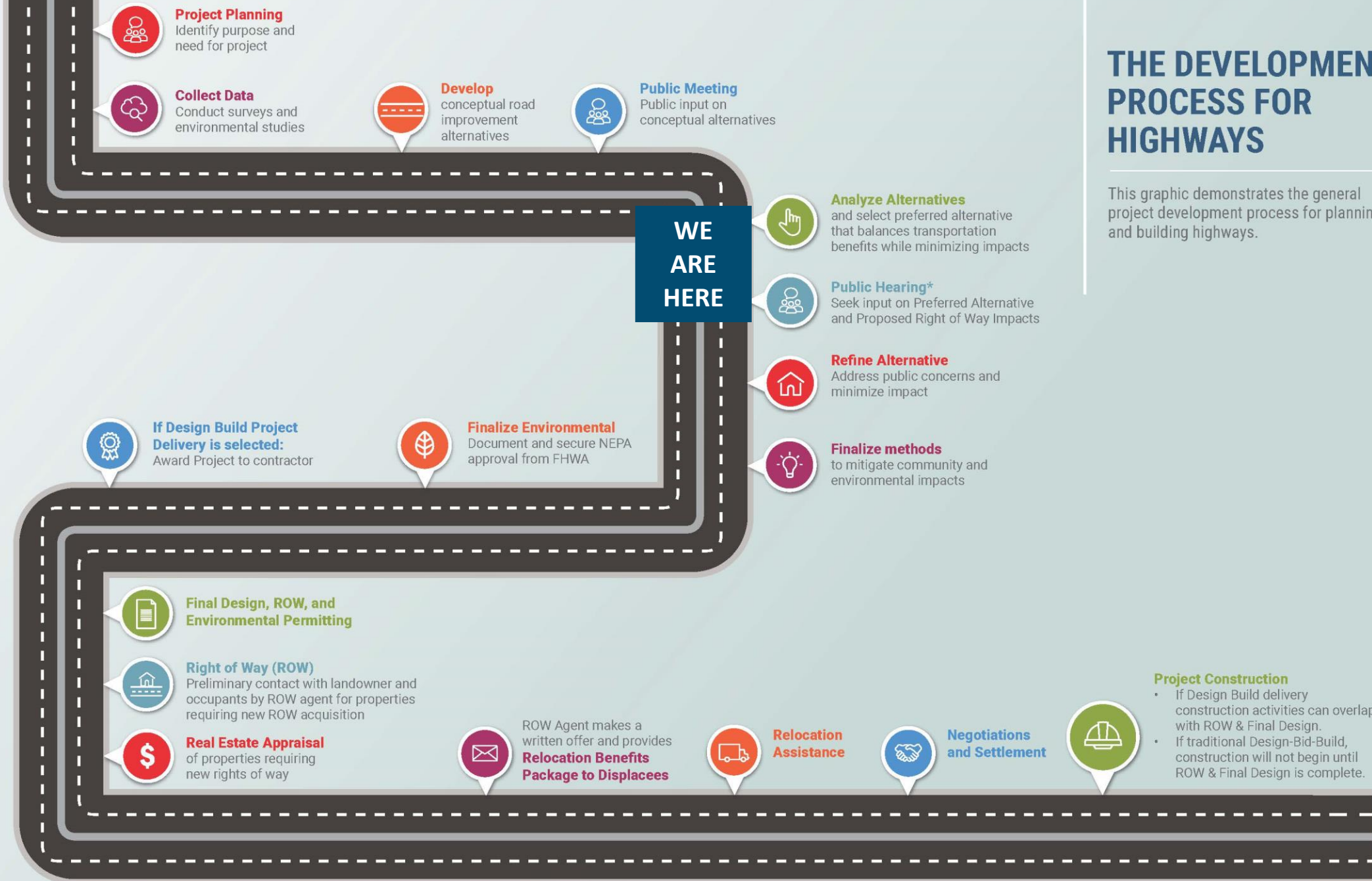
Revise Alternative **9**

FHWA Decision **10**

Public Hearing: May 2021  
*Pending FHWA Approval*

# THE DEVELOPMENT PROCESS FOR HIGHWAYS

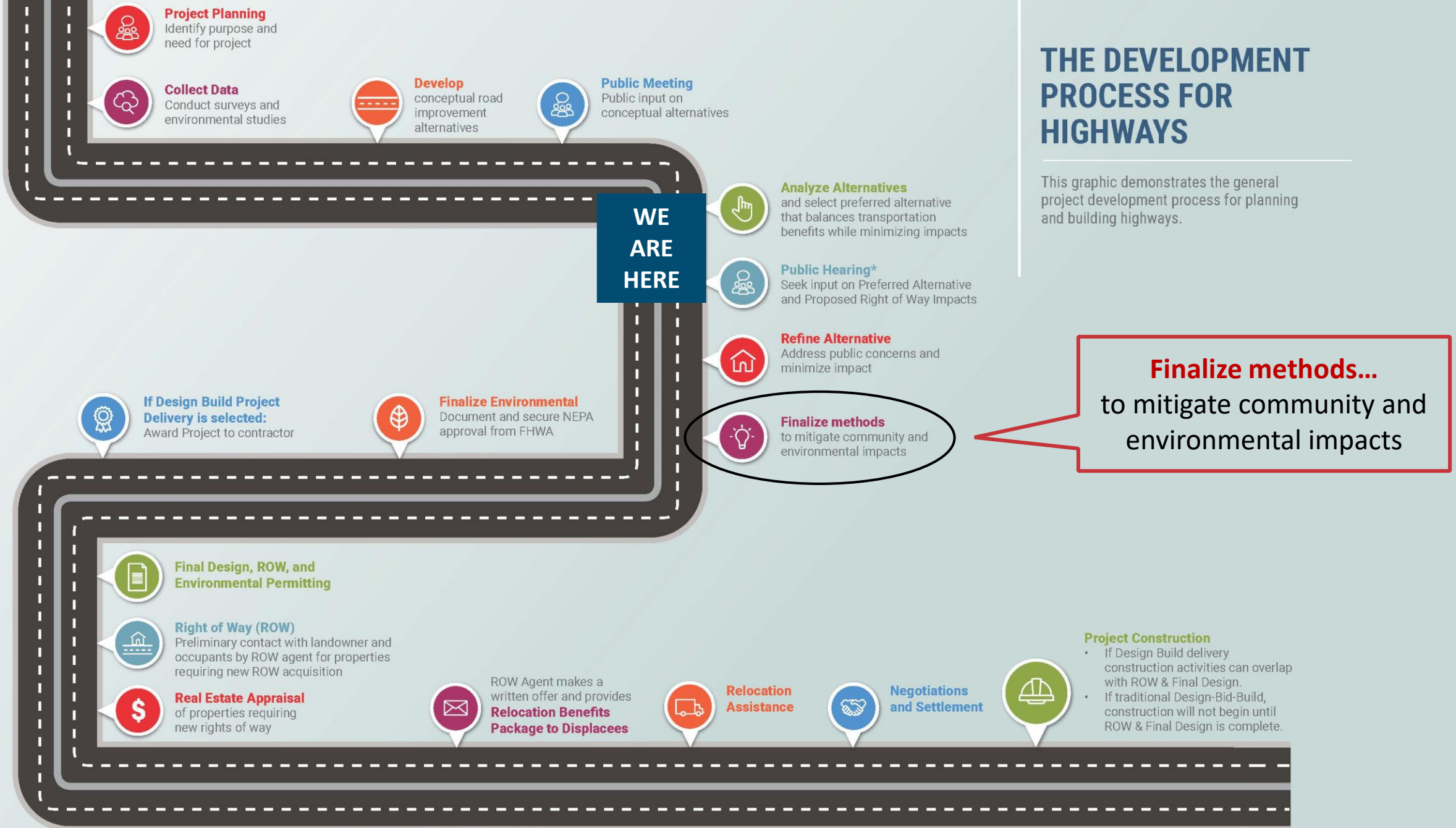
This graphic demonstrates the general project development process for planning and building highways.



\*Process depicted on this graphic is for projects being developed under an Environmental Assessment or Environmental Impact Statement; smaller projects developed under a Categorical Exclusion do not require a Public Hearing.

# THE DEVELOPMENT PROCESS FOR HIGHWAYS

This graphic demonstrates the general project development process for planning and building highways.



\*Process depicted on this graphic is for projects being developed under an Environmental Assessment or Environmental Impact Statement; smaller projects developed under a Categorical Exclusion do not require a Public Hearing.



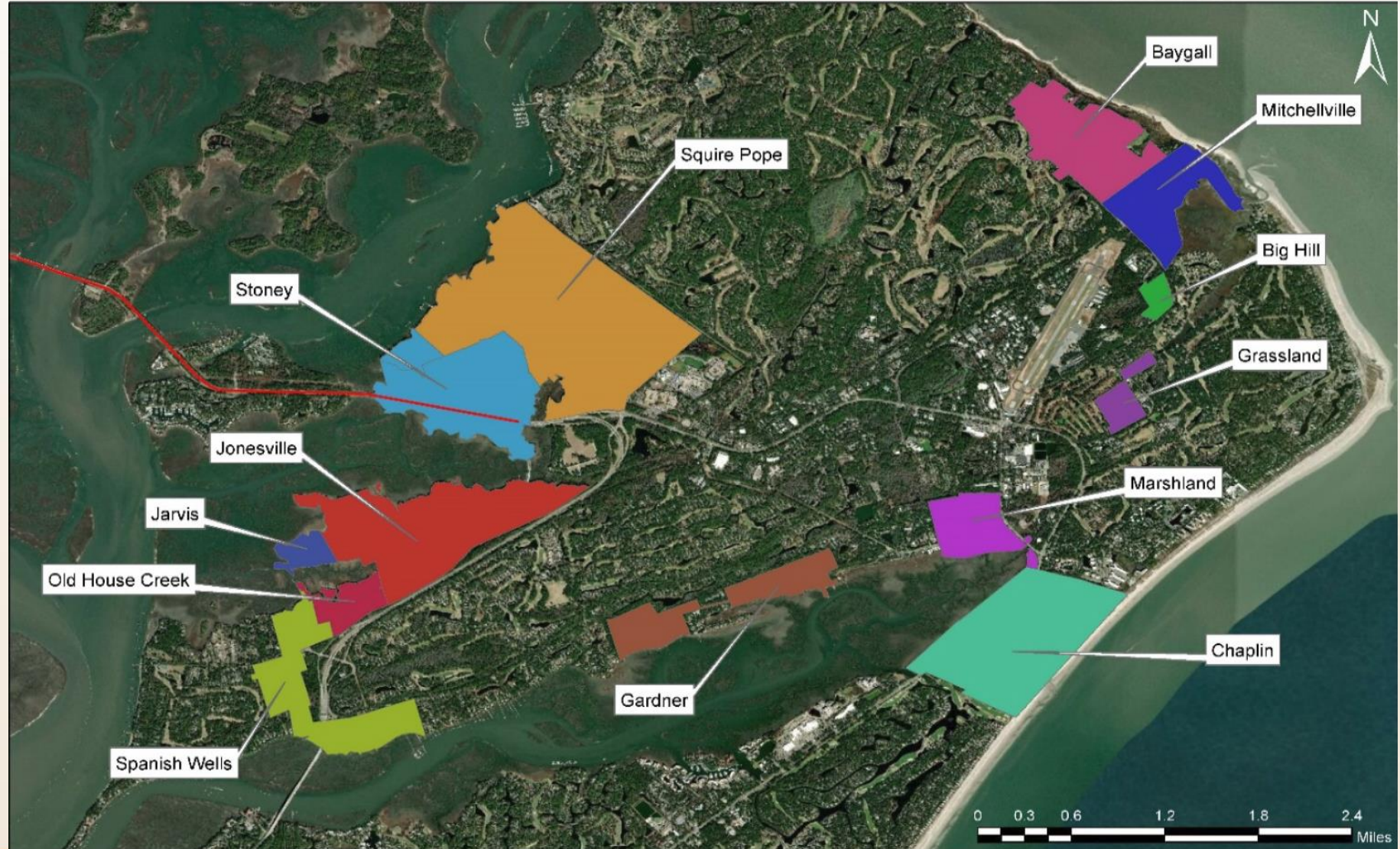
# Community Impacts & Enhancements





# Potential Community Impacts

- 0 Residential Displacements
- 2 Commercial Displacements
- Impacts anticipated to the Stoney Community - Recently classified as a Traditional Cultural Property (TCP)



# Traditional Cultural Property (TCP) Analysis

Suggests Stoney remains central to the Gullah identity:

- Long history of Black landownership
- As a cultural gateway to the island
- As a place of progress, prosperity, and education for the island's Black community



*What is a Traditional Cultural Property?*

*A subset of historic properties associated with cultural practices, traditions, beliefs, lifeways, arts, crafts, and social institutions of any living community - SHPO*

# Stoney & Community Engagement



**1-on-1 meetings** with potentially impacted property owners (*underway*)



**6 meetings** with Stoney Community to discuss Potential Impacts & Community Enhancements



# Stoney Community Enhancements

Potential Stoney Community Location Renderings



# Stoney Community Enhancements: Gateway Signage

Potential Stoney Community Location Renderings

Adjacent to the Crazy Crab  
(Entering Hilton Head Island)



# Stoney Community Enhancements: Gateway Signage

Potential Stoney Community Location Renderings

Neat Spanish Wells Road  
(Exiting Hilton Head Island)



# Stoney Community Enhancements: Pavilion + Placemaking

Potential Stoney Community Location Renderings

Near the US 278 and Squire  
Pope Road Intersection

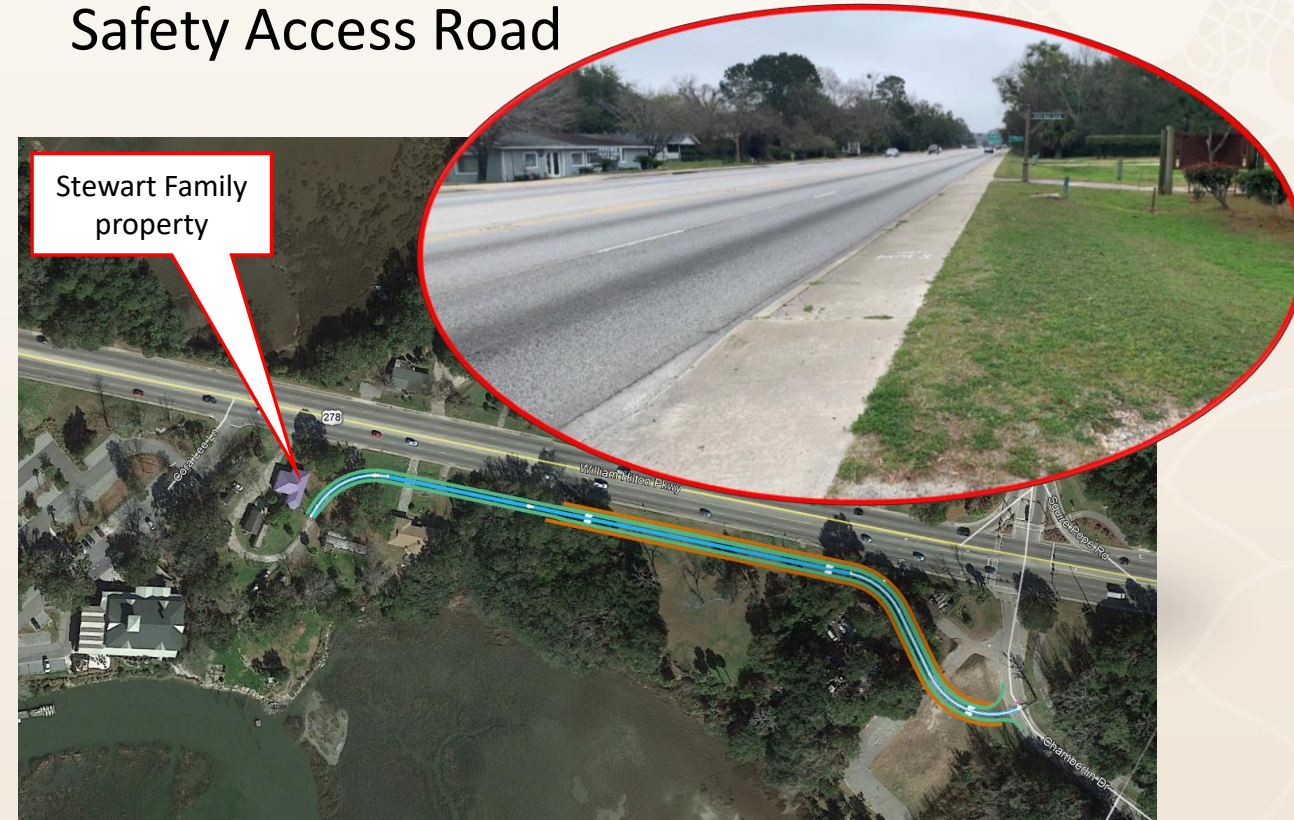


# Stoney Community Enhancements: Access

## Jenkins Island Cemetery Access Road



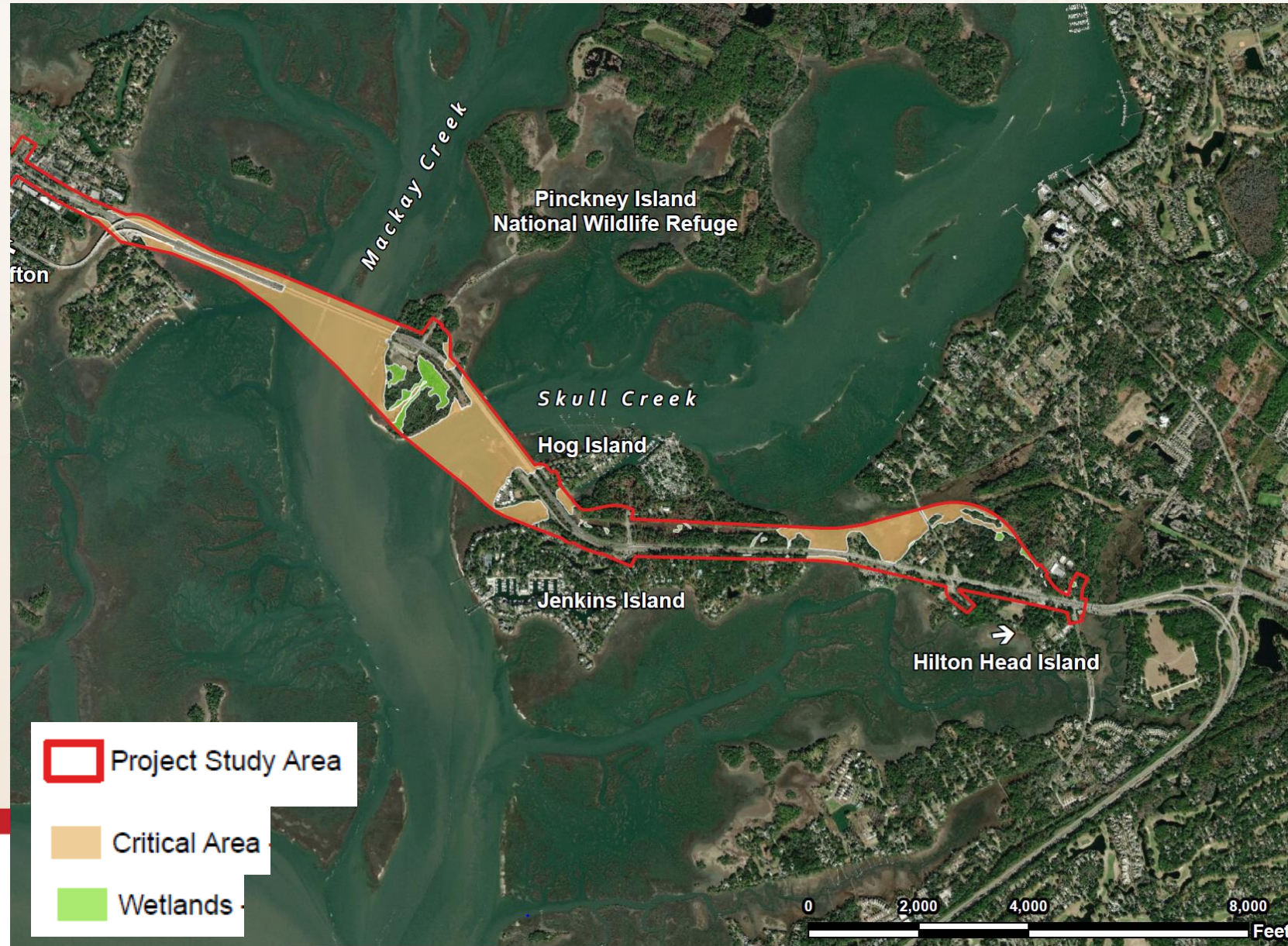
## Stewart Family Safety Access Road





# Potential Wetland & Stream Mitigation

- Multiple mitigation banks are available to provide mitigation services
  - Salt Marsh: Clydesdale Mitigation Bank or Murray Hill Mitigation Bank
  - Freshwater Wetlands: Sweetleaf Swamp Mitigation Bank
- If mitigation credits are not available for purchase Permittee Responsible Mitigation (PRM) is an option
  - SCDOT will investigate on-site & off-site PRM within the project watershed





# Next Steps



# Upcoming Ways to Engage



# Public Hearing

## Ideas to Engage the Public During COVID 19

**Verbal Comments**  
on the Project Hotline

**On-Demand Online**  
Public Hearing webpage

**On-Demand Questions**  
**Answered**  
on the Project Hotline & Email

### *Meaningful Input*

**In-Person**  
Appointments at  
Mobile Office Hours

**In-Person**  
by appointment at an  
Information/Comment  
Session

**In the Mail**  
Information Packets  
mailed by request



# Contact



[www.SCDOT278Corridor.com](http://www.SCDOT278Corridor.com)



[info@SCDOT278Corridor.com](mailto:info@SCDOT278Corridor.com)



[Facebook.com/SCDOT278Corridor](https://Facebook.com/SCDOT278Corridor)



[@SCDOT278Corridor](https://twitter.com/SCDOT278Corridor)



**Craig Winn, PE, CFM**  
*Project Manager*  
**SCDOT**





Questions?

