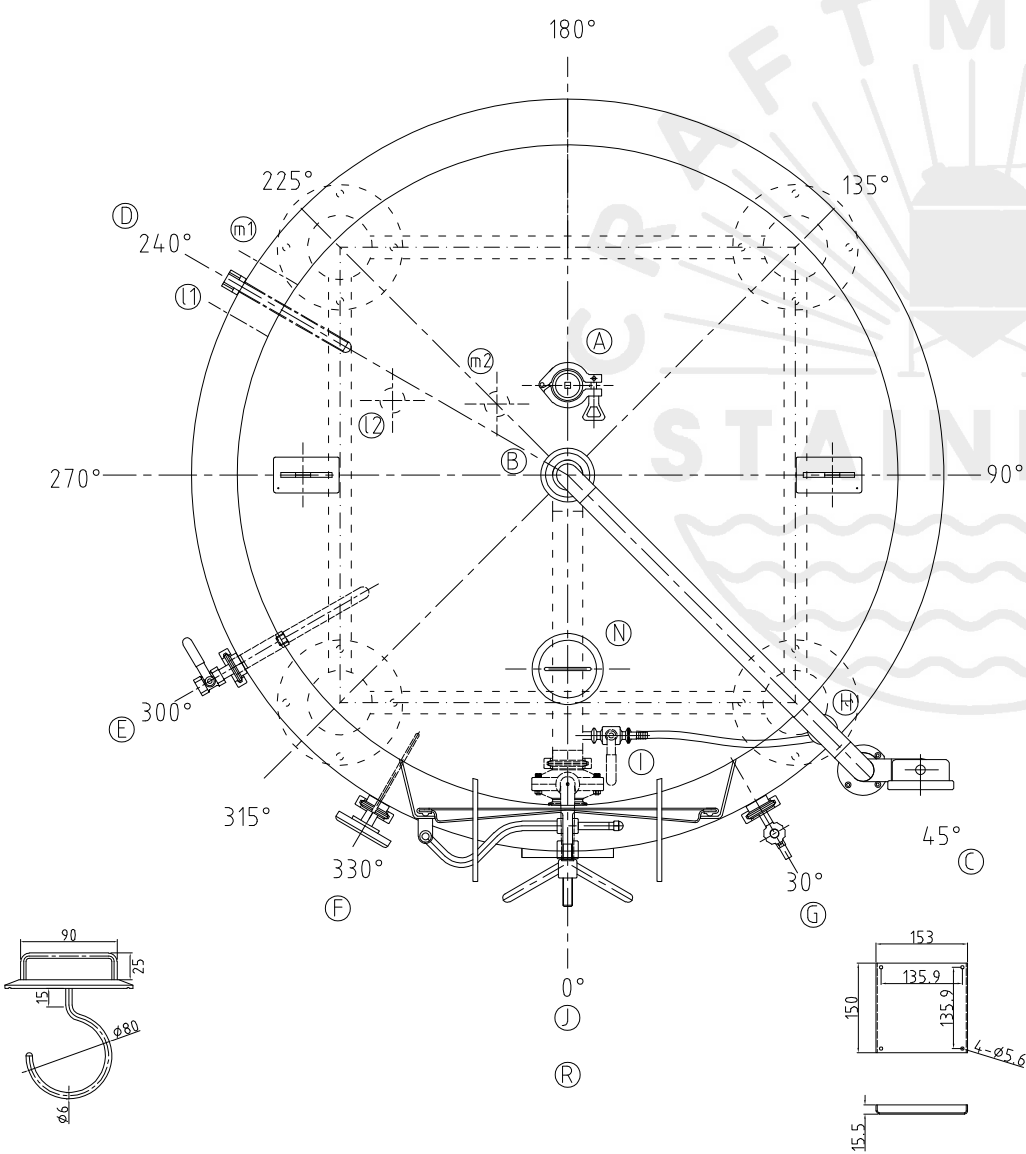
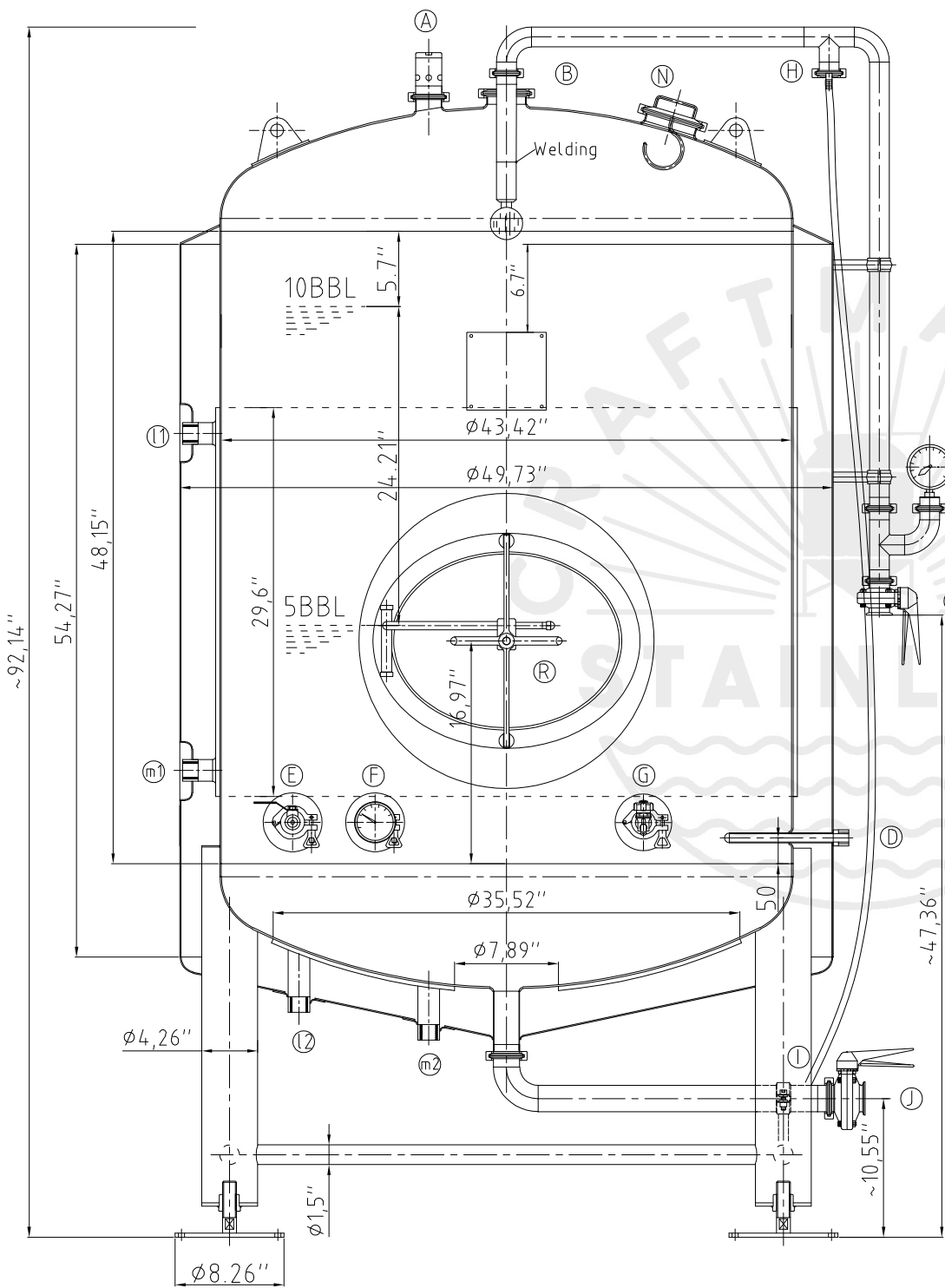
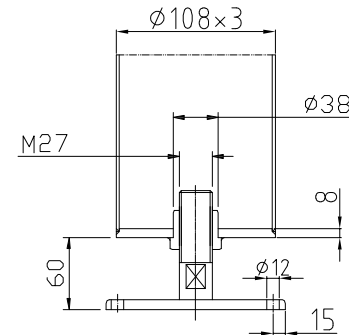
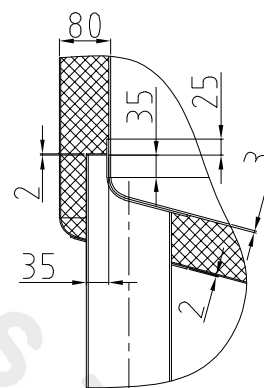
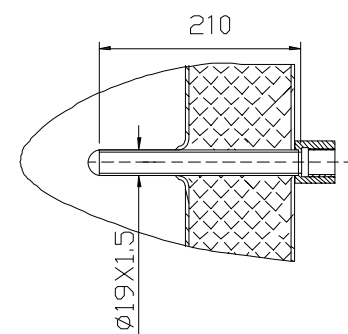
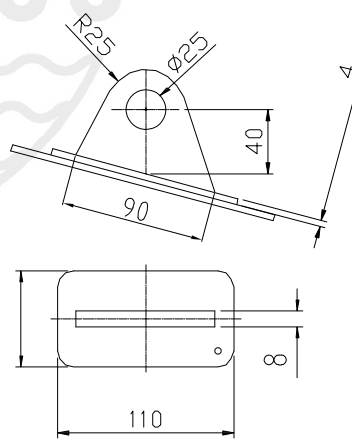


Rev.7



Design data		
Vessel category		Normal pressure
Description of parameter		Vessel Jacket
Working pressure	psi	22 45
Design pressure	psi	22 45
Level testing pressure	psi	45 60
Medium		Beer Glycol
Material		SUS 304 SUS 304
Working temperature	°F	15 to 100
Design temperature	°F	15 to 100
Gross volume	BBL	12.5
Net volume	BBL	10
Heat exchanger area	m2	3.1
Glycol Jacket Max Volume	Gallon	4.3
Insulation material		Chloride Free Polyurethane
Insulation thickness	mm	80
Total Tank Weight Empty	lbs	805
Total Tank Weight Full	lbs	3390



CONNECTIONS				
MARK	DN	DESCRIPTION	CONNECT SIZE	REMARKS
A	2"	PVRV FERRULE	2"	ISO
B	3"	PORT	3"	ISO
C	1.5"	CIP APM FERRULE	1.5"	ISO
D	1/2"	TEMPERATURE CONN	1/2"	NPT
E	1.5"	CO2 INLET	1.5"	ISO
F	1.5"	TEM-GAGE	1.5"	ISO
G	1.5"	SAMPLE FERRULE	1.5"	ISO
H	1.5"	DIAIN ARM COUPLING	1.5"	ISO
I	3/4"	DIAIN ARM COUPLING	3/4"	ISO
J	2"	OUTLET	2"	ISO
R	21"x17"	MANWAY	21"x17"	ISO
I	3/4"	COOLING OUTLET	3/4"	NPT
m	3/4"	COOLING INLET	3/4"	NPT
N	4"	HOP PORT	4"	ISO



04/28/2021

10BBL BRITE TANK