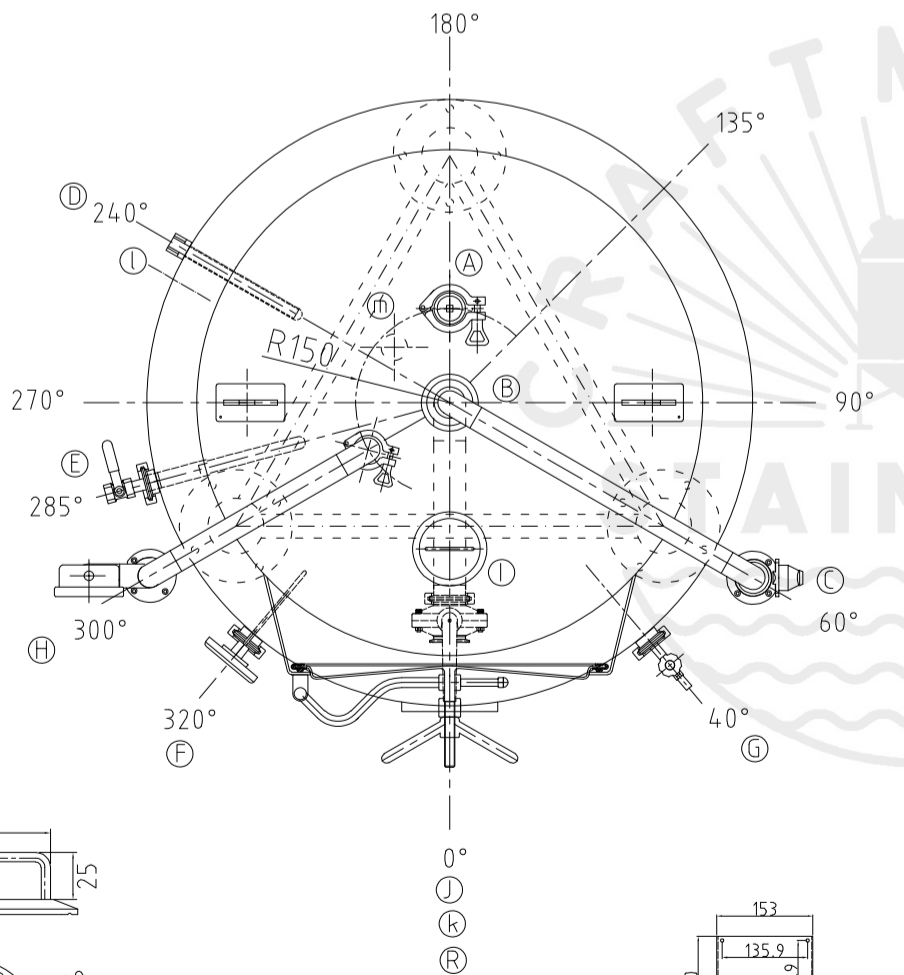
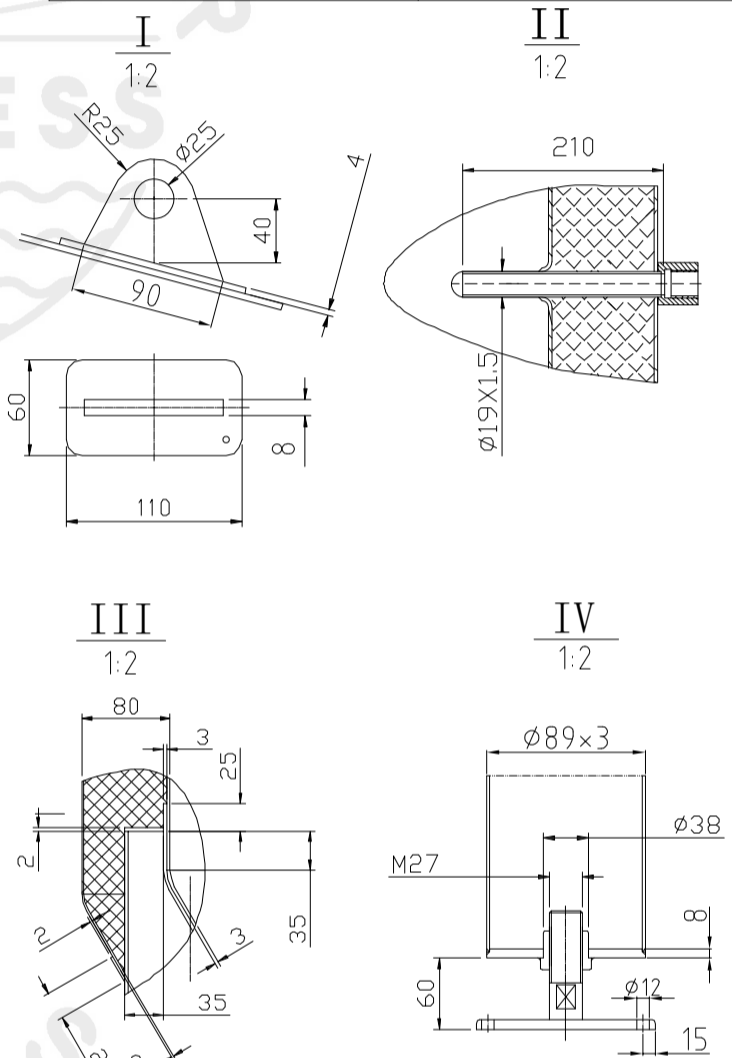
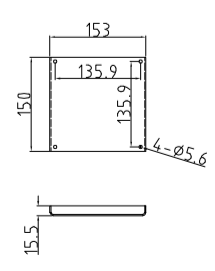
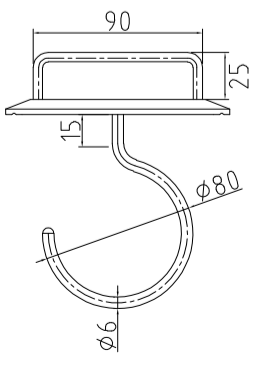


Design data			
Vessel category	Normal pressure		
Description of parameter	Vessel	Jacket	
Working pressure	psi	22	45
Design pressure	psi	22	45
Level testing pressure	psi	45	60
Medium	Beer	Glycol	
Material	SUS 304	SUS 304	
Working temperature	°F 15 to 100		
Design temperature	°F 15 to 100		
Gross volume	BBL	4.5	
Net volume	BBL	3.5	
Heat exchanger area	m2	1.5	
Glycol Jacket Max Volume	Gallon	2	
Insulation material	Chloride Free Polyurethane		
Insulation thickness	mm	80	
Total Tank Weight Empty	lbs	465	
Total Tank Weight Full	lbs	1370	



CONNECTIONS				
MARK	DN	DESCRIPTION	CONNECT SIZE	REMARKS
A	2"	PVRV FERRULE	2"	ISO
B	3"	PORT	3"	ISO
C	1.5"	CIP APM FERRULE	1.5"	ISO
D	1/2"	TEMPERATURE CONN	1/2"	NPT
E	1.5"	CO2 INLET	1.5"	ISO
F	1.5"	TEM-GAGE	1.5"	ISO
G	1.5"	SAMPLE FERRULE	1.5"	ISO
H	1.5"	OVER FLOW	1.5"	ISO
I	4"	HOP PORT	4"	ISO
J	DIN63-1.5"	DRAIN FERRULE	DIN63-1.5"	ISO
K	2"	OUTLET	2"	ISO
R	21"x17"	MANWAY	21"x17"	ISO
l	3/4"	COOLING OUTLET	3/4"	NPT
m	3/4"	COOLING INLET	3/4"	NPT



04/28/2021  
3.5BBL FERMENTER