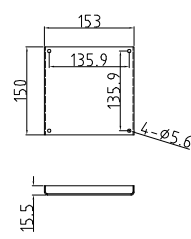
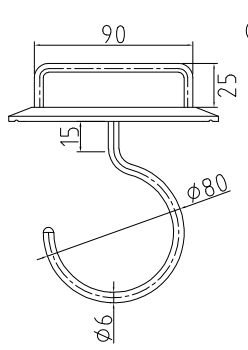
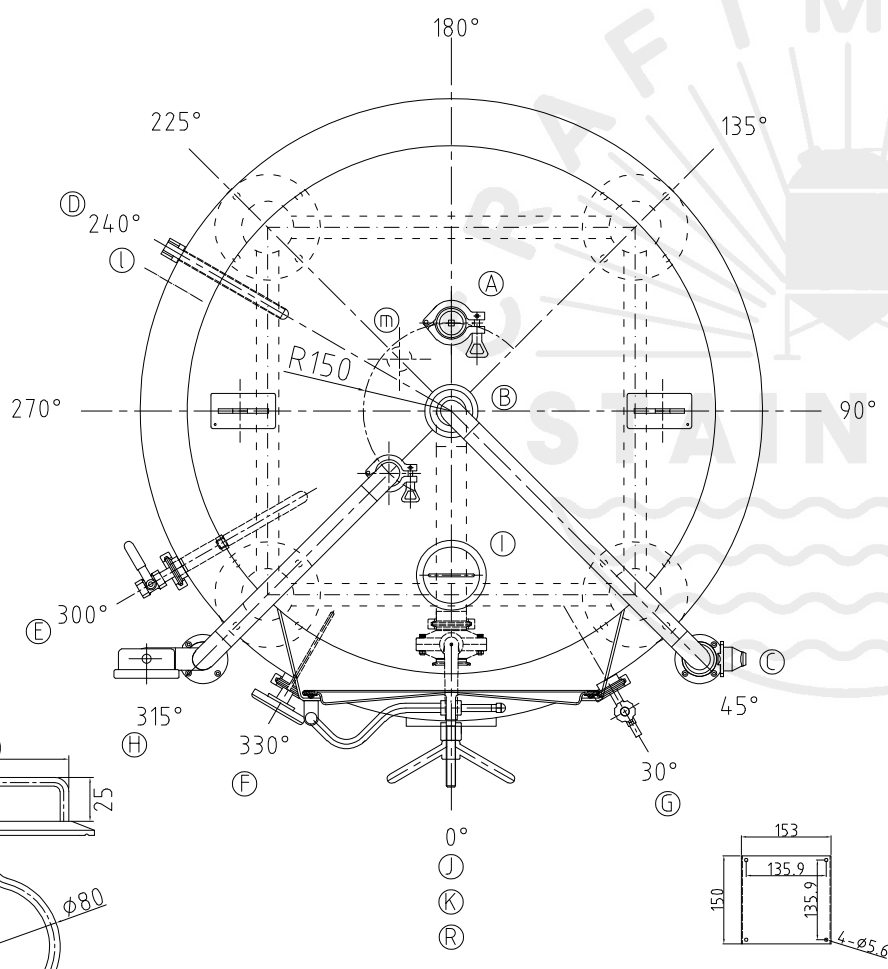
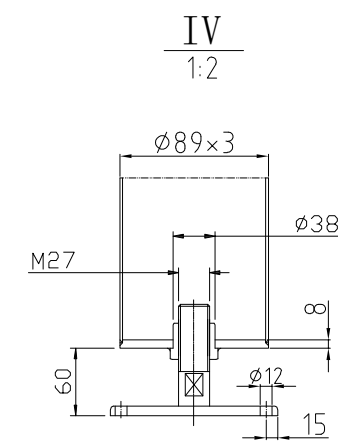
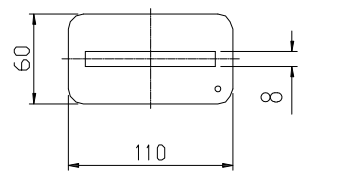
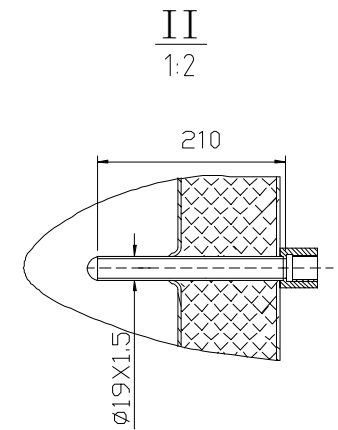
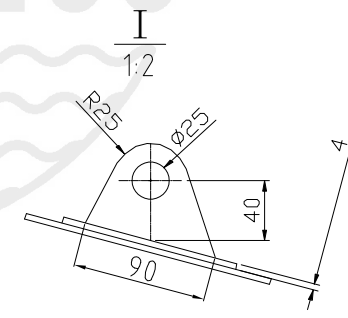
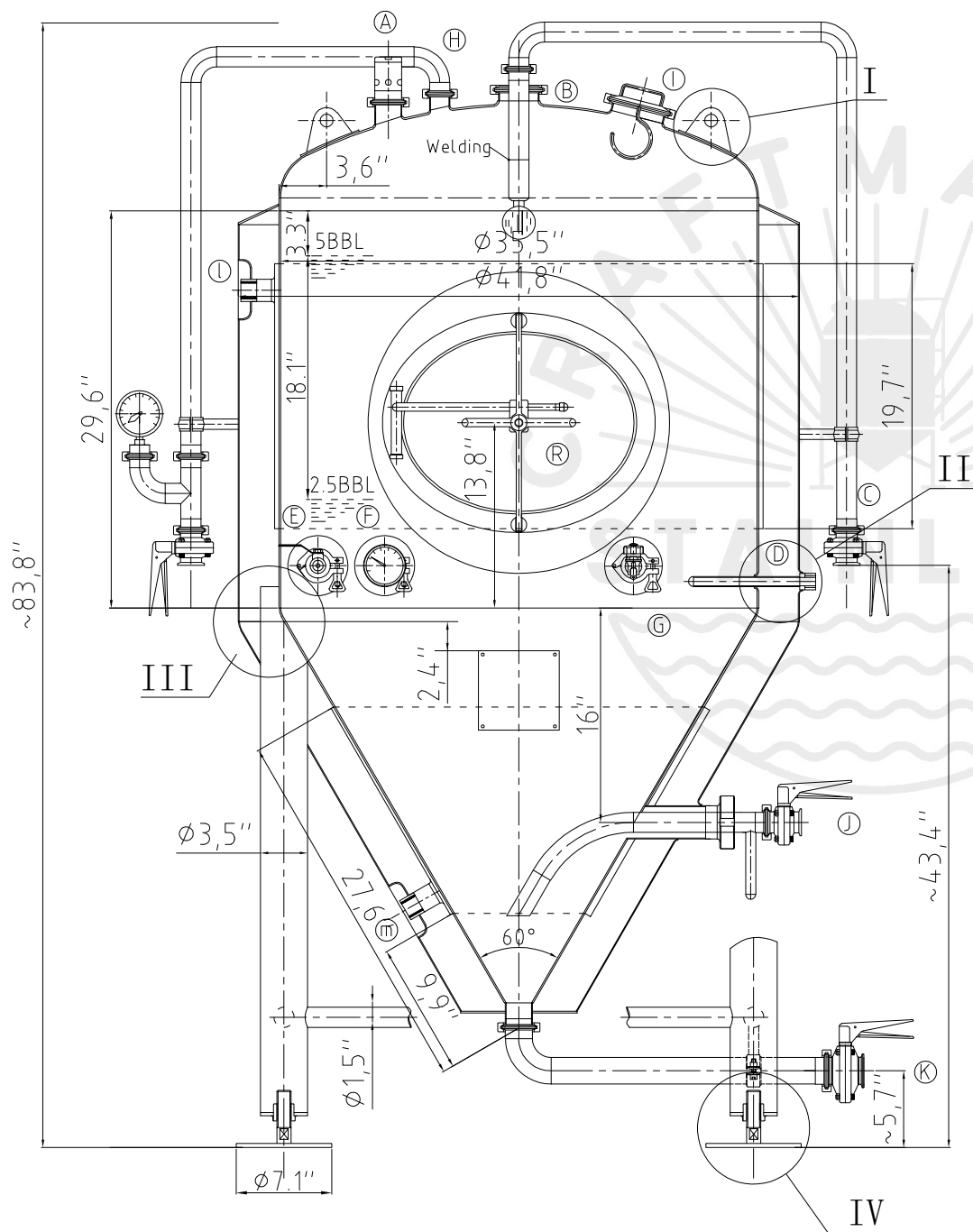


Rev.7

Design data

Description of parameter	Normal pressure	
	Vessel	Jacket
Working pressure	psi 22	psi 45
Design pressure	psi 22	psi 45
Level testing pressure	psi 45	psi 60
Medium	Beer	Glycol
Material	SUS 304	SUS 304
Working temperature	°F 15 to 100	
Design temperature	°F 15 to 100	
Gross volume	BBL 6.2	
Net volume	BBL 5	
Heat exchanger area	m2 1.9	
Glycol Jacket Max Volume	Gallon 2.7	
Insulation material	Chloride Free Polyurethane	
Insulation thickness	mm 80	
Total Tank Weight Empty	lbs 573	
Total Tank Weight Full	lbs 1865	



CONNECTIONS

MARK	DN	DESCRIPTION	CONNECT SIZE	REMARKS
A	2"	PVRV FERRULE	2"	ISO
B	3"	PORT	3"	ISO
C	1.5"	CIP APM FERRULE	1.5"	ISO
D	1/2"	TEMPERATURE CONN	1/2"	NPT
E	1.5"	CO2 INLET	1.5"	ISO
F	1.5"	TEM-GAGE	1.5"	ISO
G	1.5"	SAMPLE FERRULE	1.5"	ISO
H	1.5"	OVER FLOW	1.5"	ISO
I	4"	HOP PORT	4"	ISO
J	DIN63-15"	DRAIN FERRULE	DIN63-15"	ISO
K	2"	OUTLET	2"	ISO
R	21"x17"	MANWAY	21"x17"	ISO
l	3/4"	COOLING OUTLET	3/4"	NPT
m	3/4"	COOLING INLET	3/4"	NPT



04/28/2021

5BBL FERMENTER