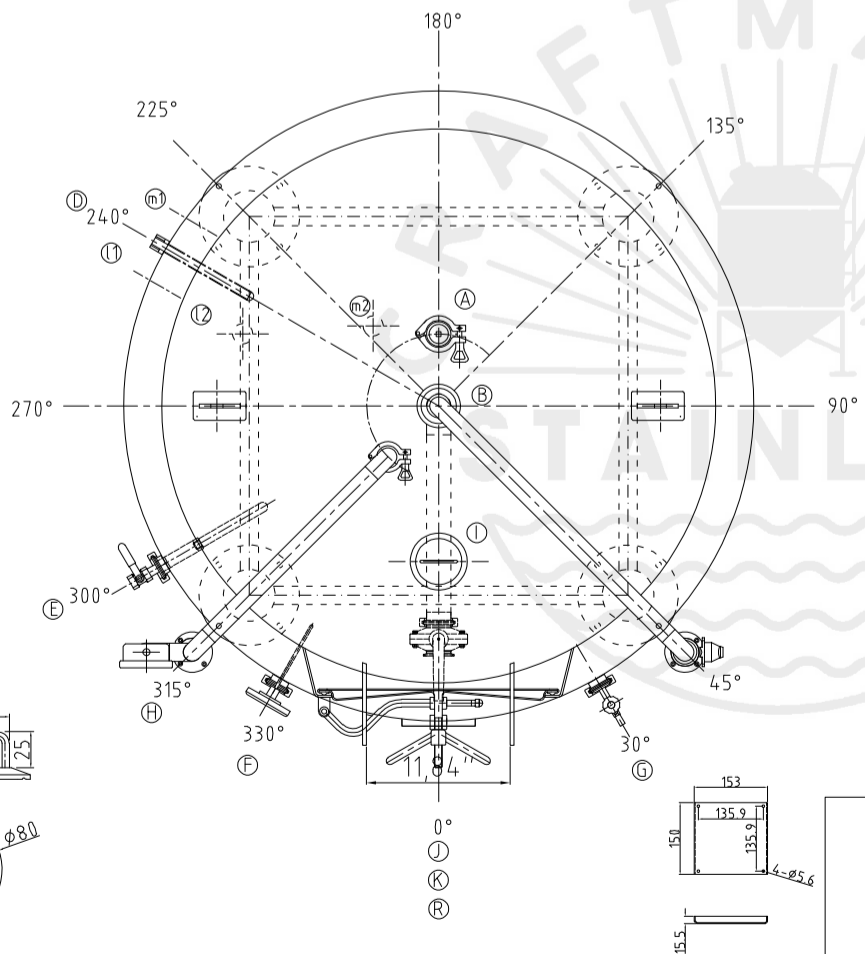
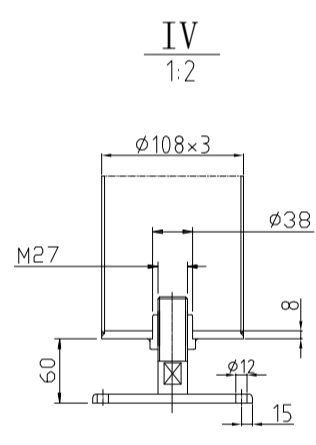
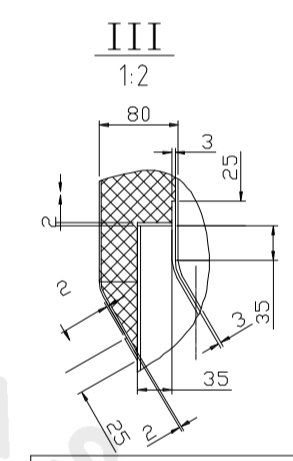
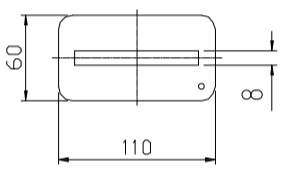
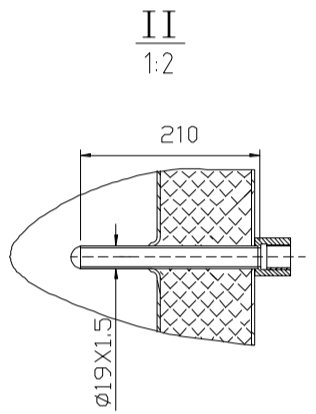
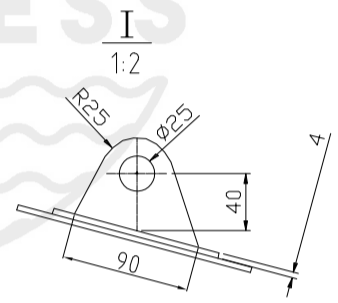
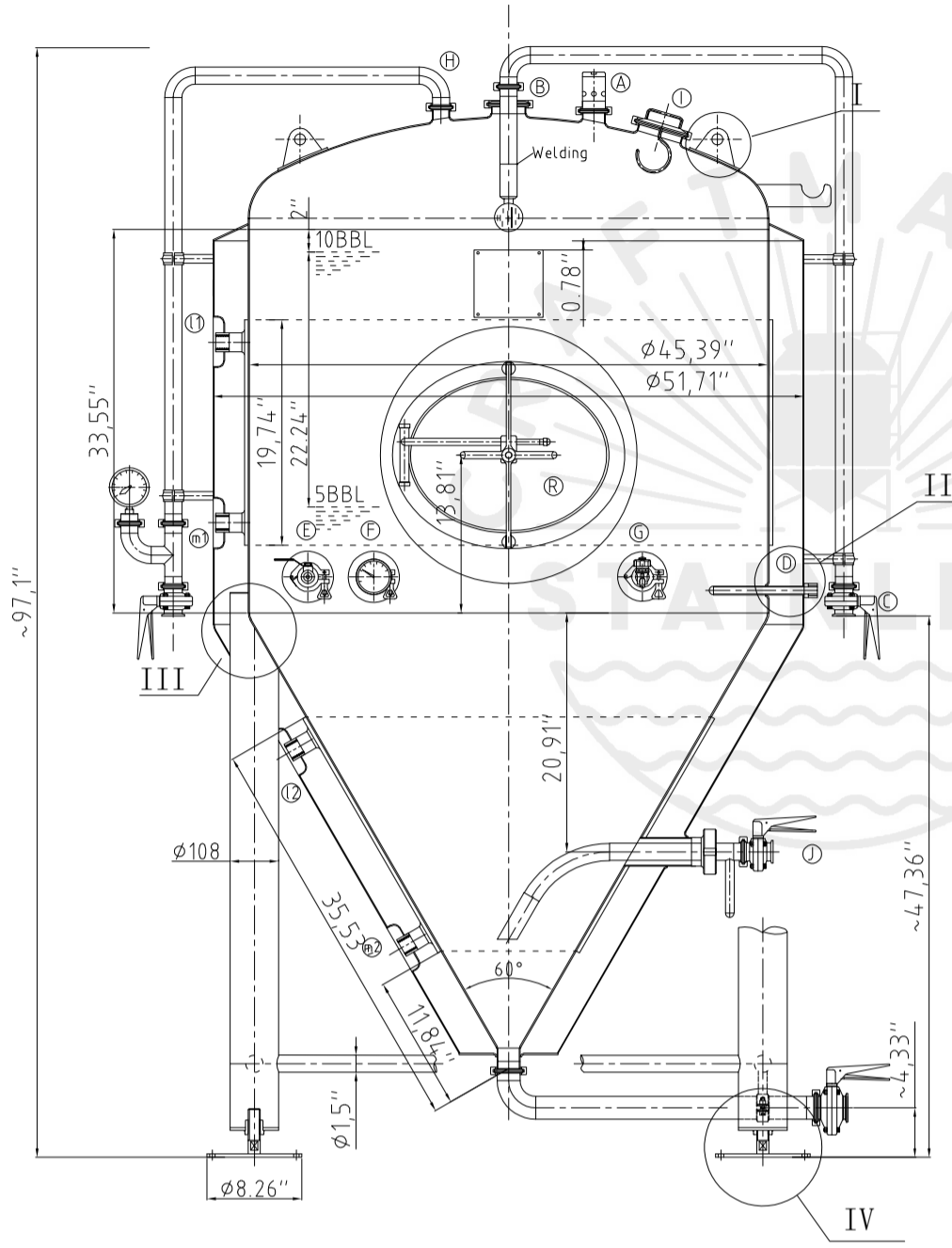


Rev.7

Design data

Description of parameter	Normal pressure		
	Vessel	Jacket	
Working pressure	psi	22	45
Design pressure	psi	22	45
Level testing pressure	psi	45	60
Medium	Beer	Glycol	
Material	SUS 304	SUS 304	
Working temperature	°F	15 to 100	
Design temperature	°F	15 to 100	
Gross volume	BBL	12	
Net volume	BBL	10	
Heat exchanger area	m2	2.8	
Glycol Jacket Max Volume	Gallon	3.9	
Insulation material	Chloride Free Polyurethane		
Insulation thickness	mm	80	
Total Tank Weight Empty	lbs	815	
Total Tank Weight Full	lbs	3400	



CONNECTIONS

MARK	DN	DESCRIPTION	CONNECT SIZE	REMARKS
A	2"	PVRV FERRULE	2"	ISO
B	3"	PORT	3"	ISO
C	1.5"	CIP APM FERRULE	1.5"	ISO
D	1/2"	TEMPERATURE CONN	1/2"	NPT
E	1.5"	CO2 INLET	1.5"	ISO
F	1.5"	TEM-GAGE	1.5"	ISO
G	1.5"	SAMPLE FERRULE	1.5"	ISO
H	1.5"	OVER FLOW	1.5"	ISO
I	4"	HOP PORT	4"	ISO
J	DIN63-1.5"	DRAIN FERRULE	DIN63-1.5"	ISO
K	2"	OUTLET	2"	ISO
R	21"x17"	MANWAY	21"x17"	ISO
l	3/4"	COOLING OUTLET	3/4"	NPT
m	3/4"	COOLING INLET	3/4"	NPT



04/28/2021

10BBL FERMENTER