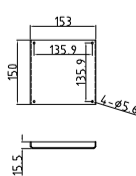
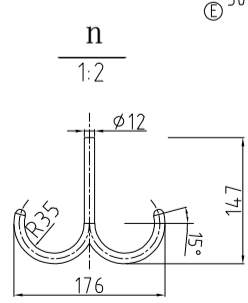
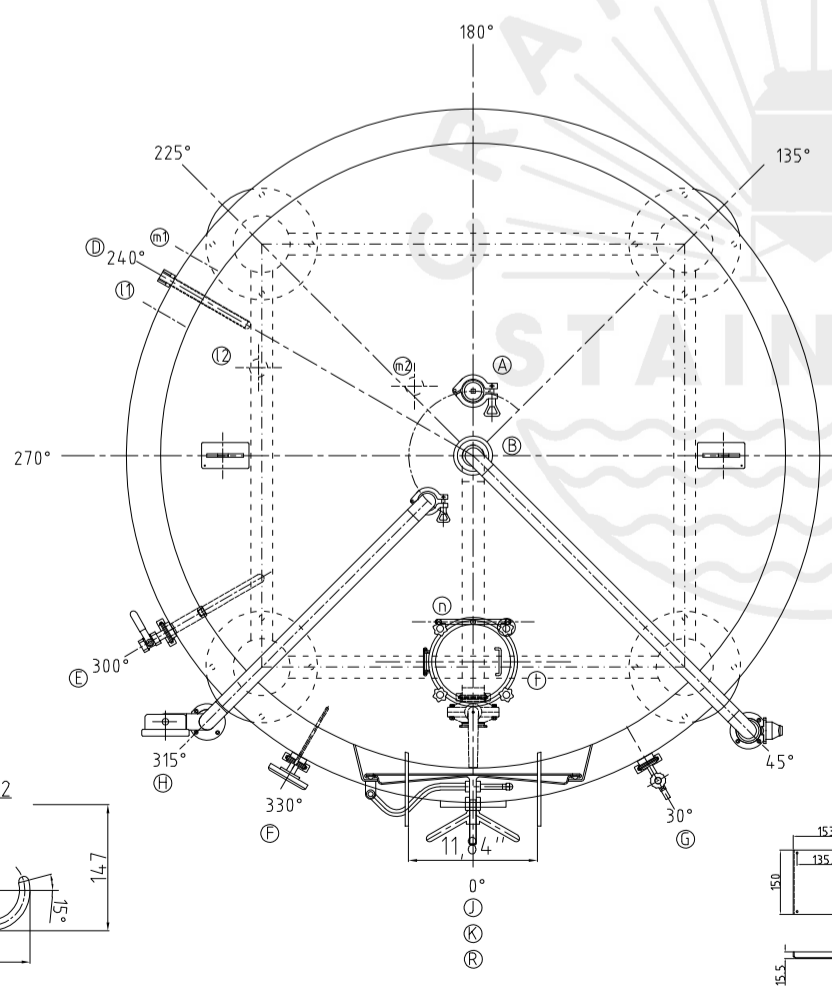
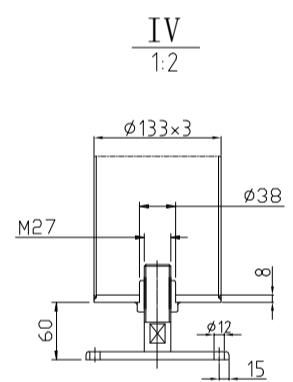
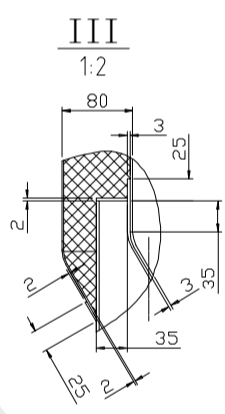
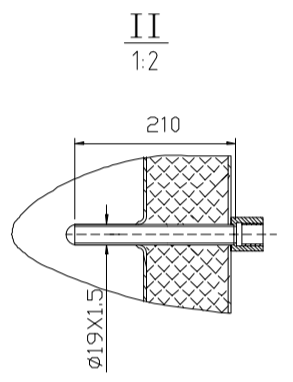
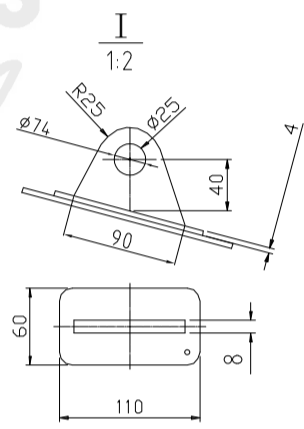
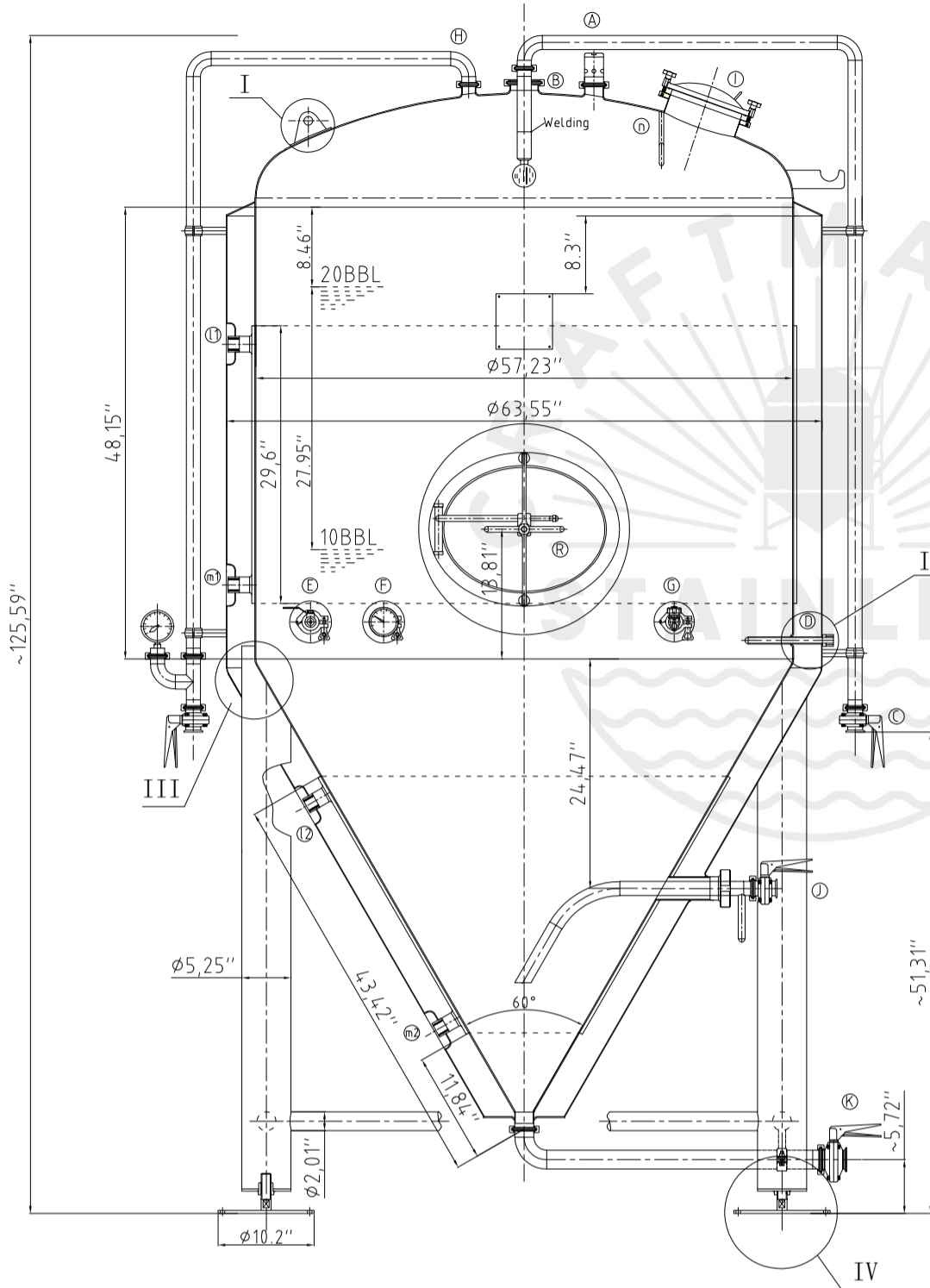


Rev.7

Design data

Vessel category	Normal pressure	
Description of parameter	Vessel	Jacket
Working pressure	psi 22	psi 45
Design pressure	psi 22	psi 45
Level testing pressure	psi 45	psi 60
Medium	Beer	Glycol
Material	SUS 304	SUS 304
Working temperature	°F 15 to 100	
Design temperature	°F 15 to 100	
Gross volume	BBL 26	
Net volume	BBL 20	
Heat exchanger area	m <sup>2</sup> 5.2	
Glycol Jacket Max Volume	Gallon 7.3	
Insulation material	Chloride Free Polyurethane	
Insulation thickness	mm 80	
Total Tank Weight Empty	lbs 1310	
Total Tank Weight Full	lbs 6482	



CONNECTIONS

MARK	DN	DESCRIPTION	CONNECT SIZE	REMARKS
A	2"	PVRV FERRULE	2"	ISO
B	3"	PORT	3"	ISO
C	15"	CIP APM FERRULE	15"	ISO
D	1/2"	TEMPERATURE CONN	1/2"	NPT
E	15"	CO2 INLET	15"	ISO
F	15"	TEM-GAGE	15"	ISO
G	15"	SAMPLE FERRULE	15"	ISO
H	15"	OVER FLOW	15"	ISO
I	8"	HOP PORT	8"	ISO
J	DIN63-15"	DRAIN FERRULE	DIN63-15"	ISO
K	2"	OUTLET	2"	ISO
R	21"x17"	MANWAY	21"x17"	ISO
l	3/4"	COOLING OUTLET	3/4"	NPT
m	3/4"	COOLING INLET	3/4"	NPT
n	0.5"	A HOOK	0.5"	ISO



04/28/2021  
20BBL FERMENTER