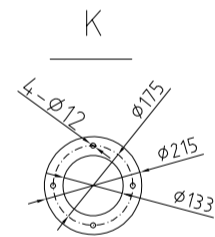
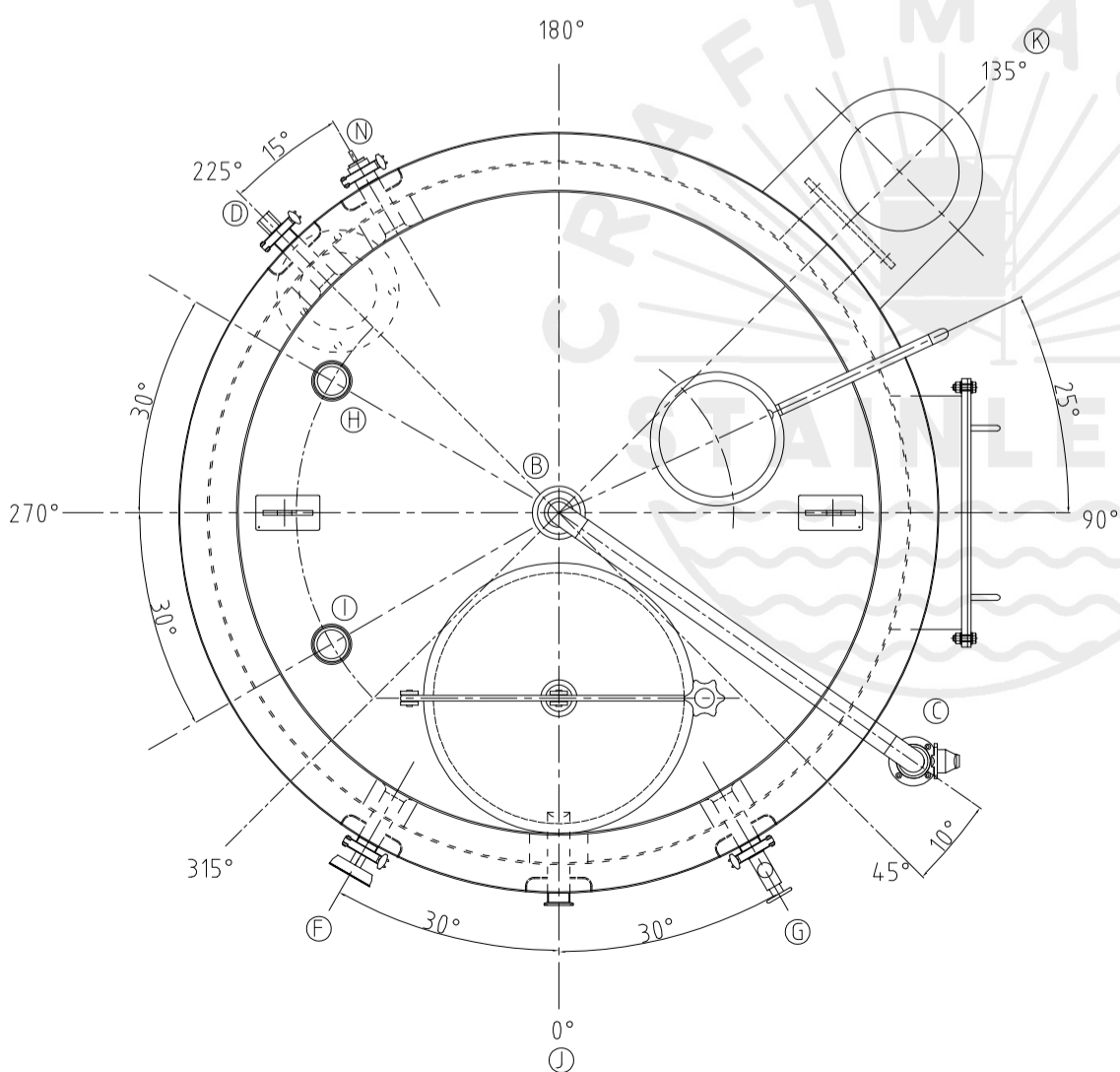
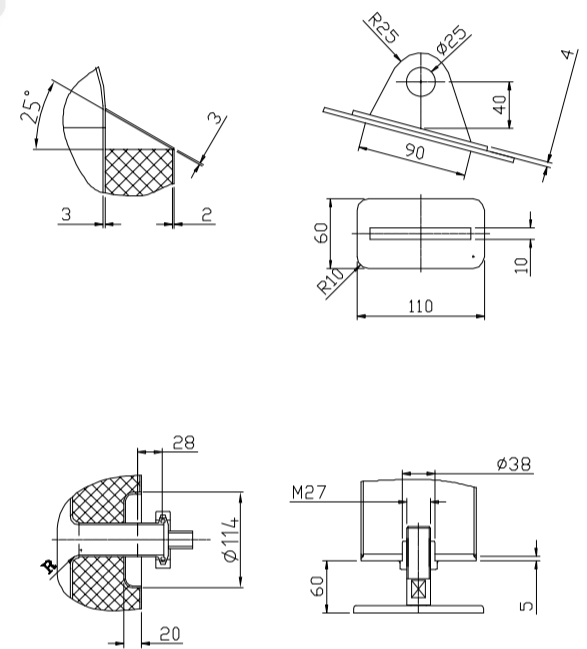


| Design data | |
|--------------------------|-----------------|
| Vessel category | Normal pressure |
| Description of parameter | Vessel |
| Working pressure | psi ATMP |
| Design pressure | psi ATMP |
| Level testing pressure | psi ATMP |
| Medium | Water |
| Material | SUS 304 |
| Working temperature | °F 15 to 250 |
| Design temperature | °F 15 to 250 |
| Gross volume | BBL 8.5 |
| Net volume | BBL 7 |
| Heat exchanger area | m2 ----- |
| Glycol Jacket Max Volume | Gallon ----- |
| Insulation material | Rock wool |
| Insulation thickness | mm 100 |
| Total Tank Weight Empty | lbs 1270 |
| Total Tank Weight Full | lbs 3080 |



| CONNECTIONS | | | | |
|-------------|--------|-------------------------|--------------|---------|
| MARK | DN | DESCRIPTION | CONNECT SIZE | REMARKS |
| A | ø17" | Manway | ø17" | ISO |
| B | 3" | PORT | 3" | ISO |
| C | 1.5" | CIP APM FERRULE | 1.5" | ISO |
| D | 1.5" | TEMPERATURE CONN | 1.5" | ISO |
| E | ø4.25" | EXHAUST CAP | ø4.25" | ISO |
| F | 1.5" | TEM-GAGE | 1.5" | ISO |
| G | 1.5" | LEVEL GAGE | 1.5" | ISO |
| H | 1.5" | INLET | 1.5" | ISO |
| I | 1.5" | INLET | 1.5" | ISO |
| J | 1.5" | OUTLET | 1.5" | ISO |
| K | ø5.2" | Burner flange | ø5.2" | ISO |
| N | 1.5" | Anti Dry Burning Sensor | 1.5" | ISO |
| | | | | |



12/21/2021

7BBL HLT(FIRED)