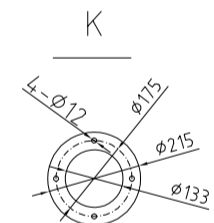
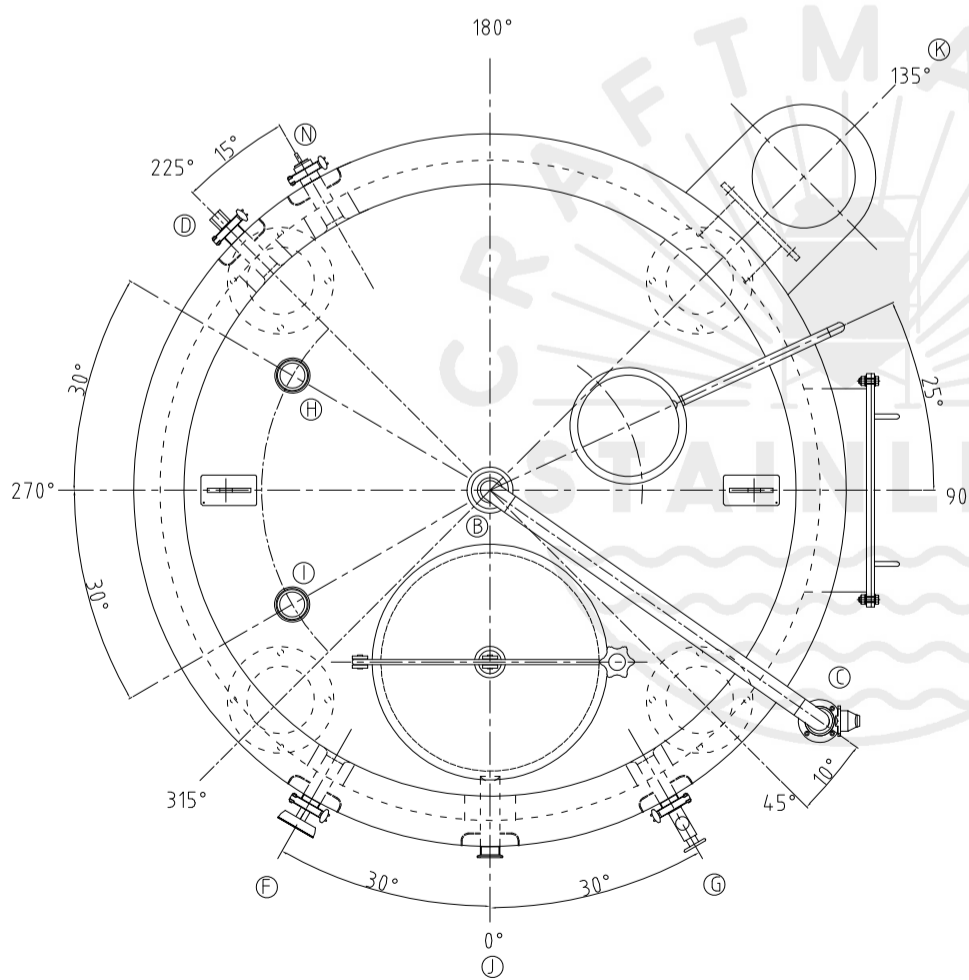
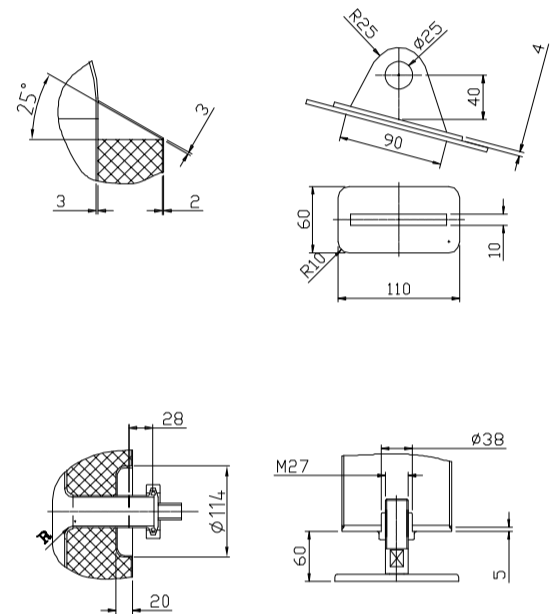


| Design data              |                 |
|--------------------------|-----------------|
| Vessel category          | Normal pressure |
| Description of parameter | Vessel          |
| Working pressure         | psi ATMP        |
| Design pressure          | psi ATMP        |
| Level testing pressure   | psi ATMP        |
| Medium                   | Water           |
| Material                 | SUS 304         |
| Working temperature      | °F 15 to 250    |
| Design temperature       | °F 15 to 250    |
| Gross volume             | BBL 12.2        |
| Net volume               | BBL 10          |
| Heat exchanger area      | m2 -----        |
| Glycol Jacket Max Volume | Gallon -----    |
| Insulation material      | Rock wool       |
| Insulation thickness     | mm 100          |
| Total Tank Weight Empty  | lbs 1390        |
| Total Tank Weight Full   | lbs 3980        |



| CONNECTIONS |        |                         |              |         |
|-------------|--------|-------------------------|--------------|---------|
| MARK        | DN     | DESCRIPTION             | CONNECT SIZE | REMARKS |
| A           | ø17"   | Manway                  | ø17"         | ISO     |
| B           | 3"     | PORT                    | 3"           | ISO     |
| C           | 1.5"   | CIP APM FERRULE         | 1.5"         | ISO     |
| D           | 1.5"   | TEMPERATURE CONN        | 1.5"         | ISO     |
| E           | ø4.25" | EXHAUST CAP             | ø4.25"       | ISO     |
| F           | 1.5"   | TEM-GAGE                | 1.5"         | ISO     |
| G           | 1.5"   | LEVEL GAGE              | 1.5"         | ISO     |
| H           | 1.5"   | INLET                   | 1.5"         | ISO     |
| I           | 1.5"   | INLET                   | 1.5"         | ISO     |
| J           | 1.5"   | OUTLET                  | 1.5"         | ISO     |
| K           | ø5.2"  | Burner flange           | ø5.2"        | ISO     |
| N           | 1.5"   | Anti Dry Burning Sensor | 1.5"         | ISO     |
|             |        |                         |              |         |



12/21/2021  
10BBL HLT(FIRED)