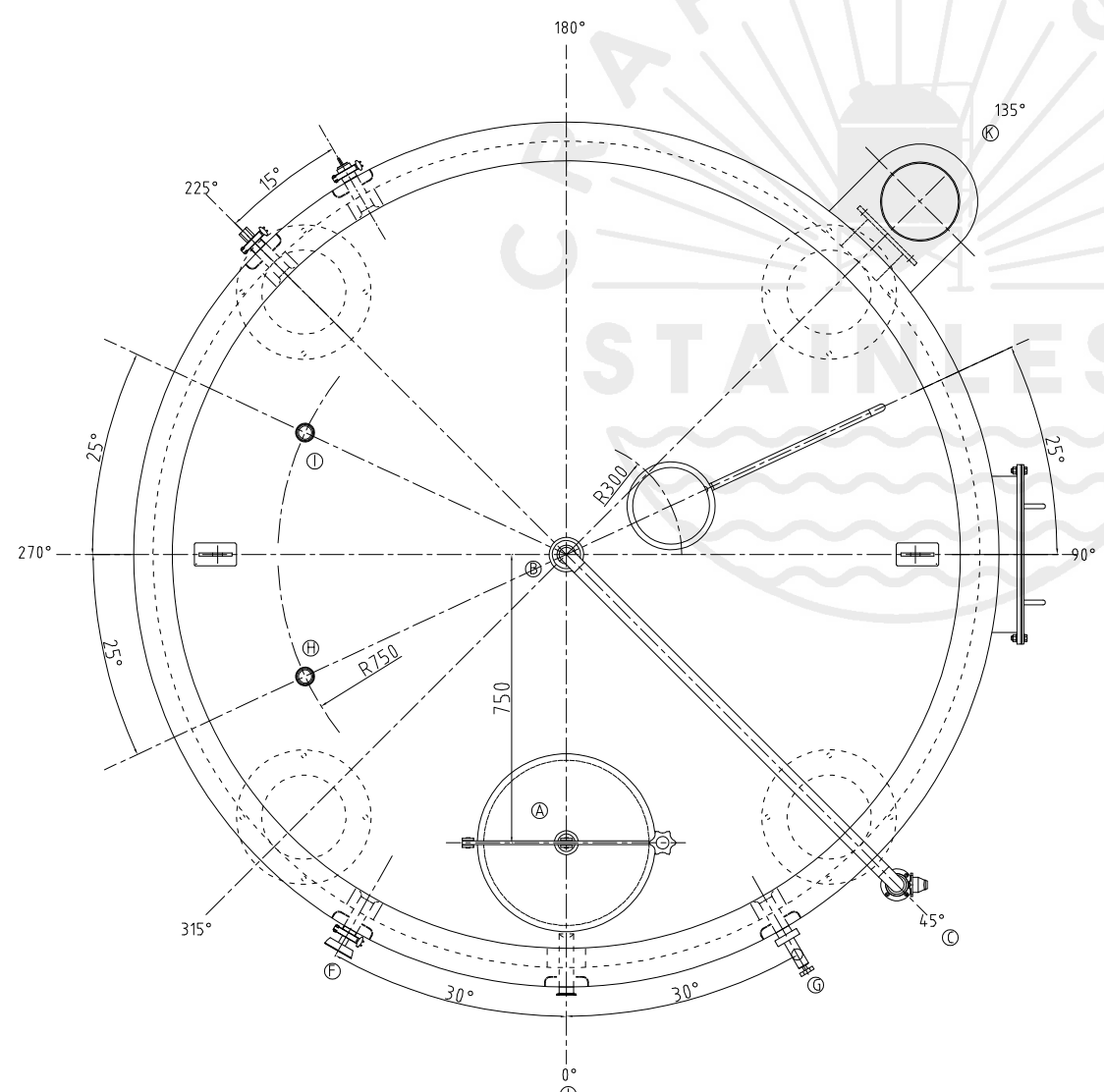
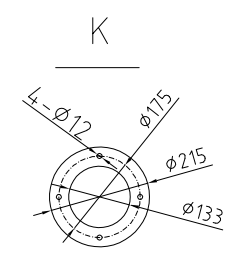
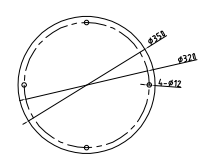
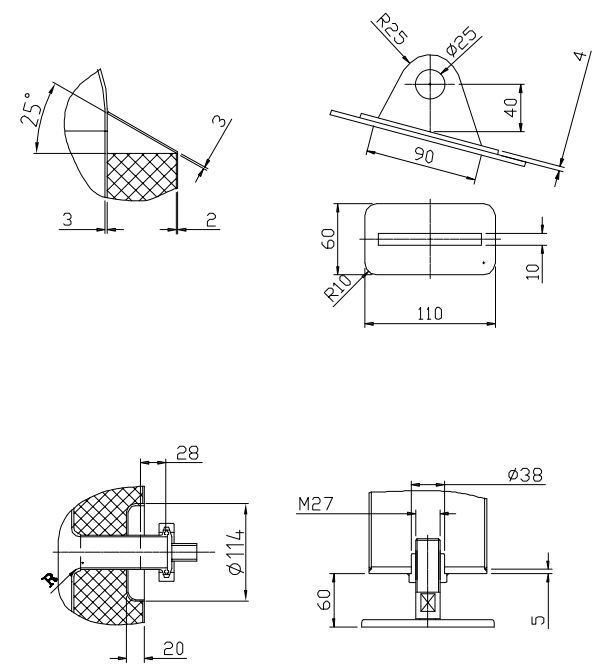
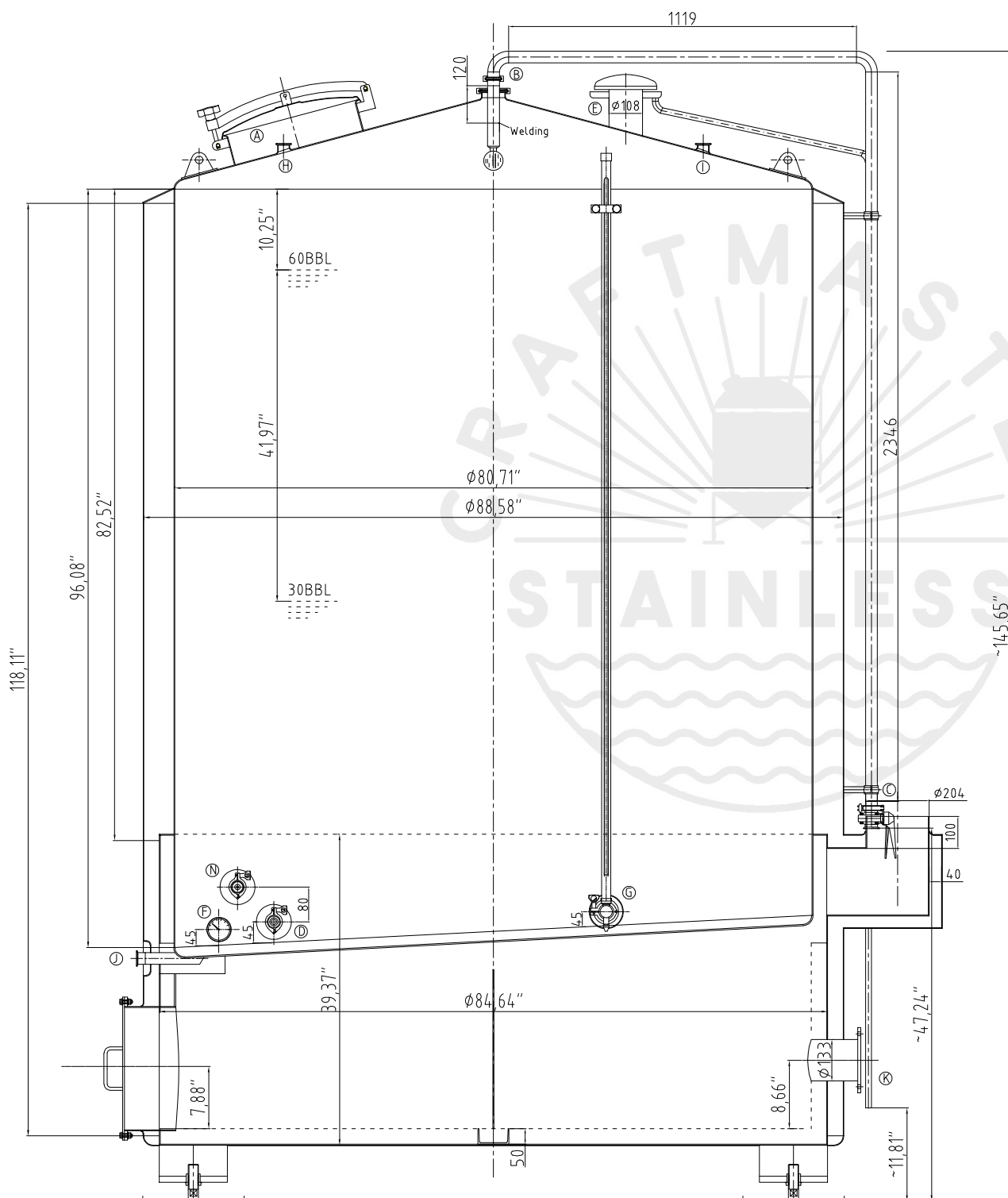


Design data

Vessel category	Normal pressure
Description of parameter	Vessel
Working pressure	psi
Design pressure	psi
Level testing pressure	psi
Medium	Water
Material	SUS 304
Working temperature	°F
Design temperature	°F
Gross volume	BBL
Nef volume	BBL
Heat exchanger area	m2
Glycol Jacket Max Volume	Gallon
Insulation material	Rock wool
Insulation thickness	mm
Total Tank Weight Empty	lbs
Total Tank Weight Full	lbs



CONNECTIONS

MARK	DN	DESCRIPTION	CONNECT SIZE	REMARKS
A	φ17"	Manway	φ17"	ISO
B	3"	PORT	3"	ISO
C	1.5"	CIP APM FERRULE	1.5"	ISO
D	1.5"	TEMPERATURE CONN	1.5"	ISO
E	φ4.25"	EXHAUST CAP	φ4.25"	ISO
F	1.5"	TEM-GAGE	1.5"	ISO
G	1.5"	LEVEL GAGE	1.5"	ISO
H	1.5"	INLET	1.5"	ISO
I	1.5"	INLET	1.5"	ISO
J	1.5"	OUTLET	1.5"	ISO
K	φ5.2"	Burner flange	φ5.2"	ISO
N	1.5"	Anti Dry Burning Sensor	1.5"	ISO



11/11/2022

60BBL HLT(FIRED)