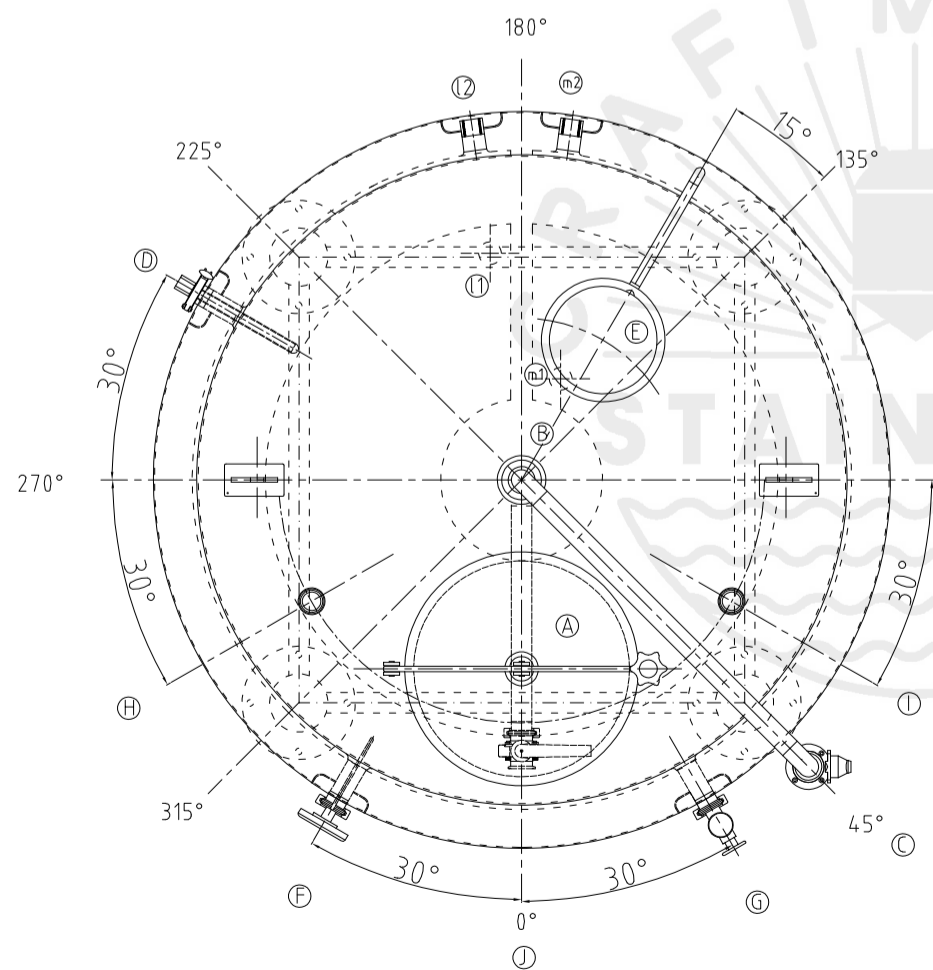
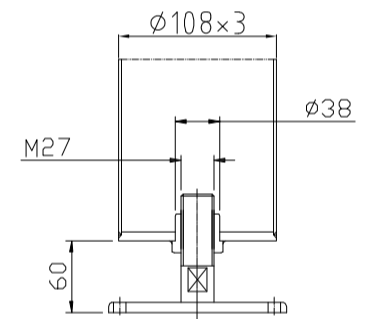
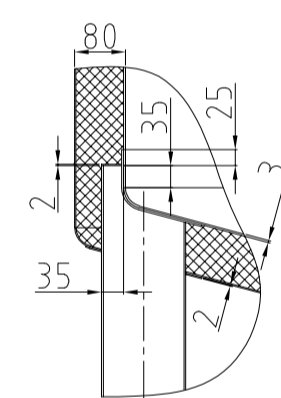
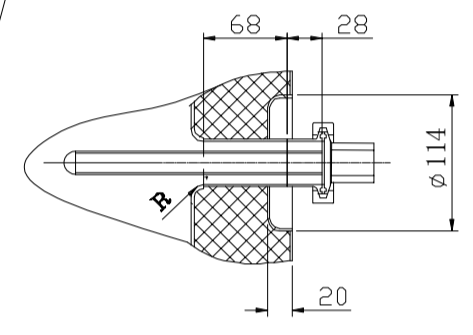
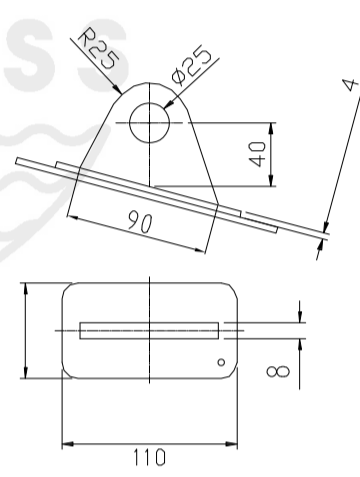
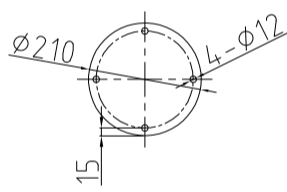
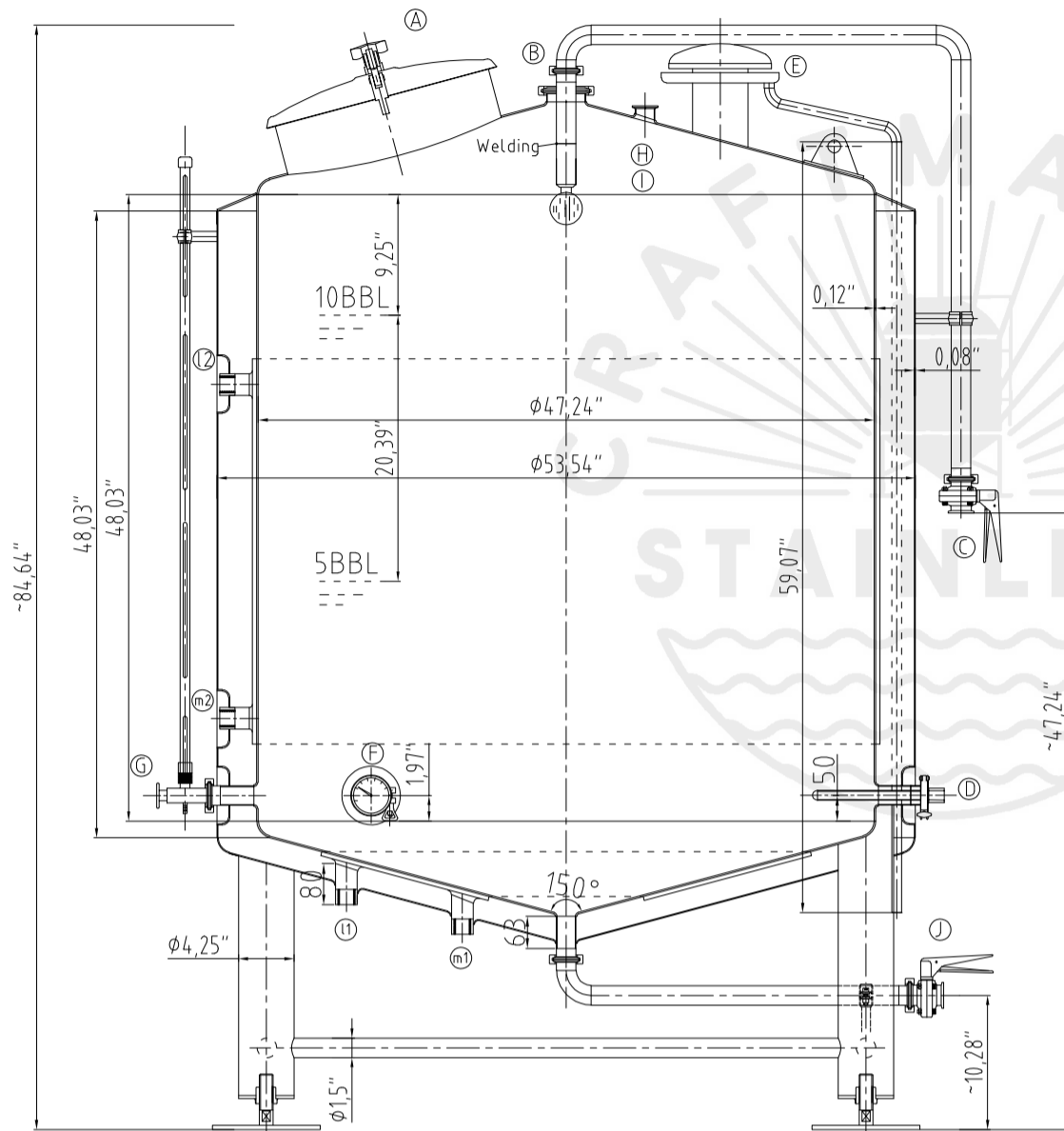


### Design data

Vessel category		Normal pressure	
Description of parameter		Vessel	Vessel
Working pressure	psi	ATMP	45
Design pressure	psi	ATMP	45
Level testing pressure	psi	ATMP	60
Medium		Water	Glycol
Material		SUS 304	SUS 304
Working temperature	°F	15 to 250	
Design temperature	°F	15 to 250	
Gross volume	BBL	12.7	
Net volume	BBL	10	
Heat exchanger area	m <sup>2</sup>	3.5	
Glycol Jacket Max Volume	Gallon	4.8	
Insulation material		Chloride Free Polyurethane	
Insulation thickness	mm	80	
Total Tank Weight Empty	lbs	815	
Total Tank Weight Full	lbs	3400	



### CONNECTIONS

MARK	DN	DESCRIPTION	CONNECT SIZE	REMARKS
A	φ17"	MANWAY	φ430	ISO
B	3"	PORT	φ76.2x1.5	ISO
C	1.5"	CIP APM FERRULE	φ38.1x1.5	ISO
D	1.5"	TEMPERATURE CONN	φ38.1x1.5	ISO
E	φ4.25"	EXHAUST CAP	φ108	ISO
F	1.5"	TEM-GAGE	φ38.1x1.5	ISO
G	1.5"	LEVEL GAGE	φ38.1x1.5	ISO
H	1.5"	INLET	φ38.1x1.5	ISO
I	1.5"	INLET	φ38.1x1.5	ISO
J	1.5"	OUTLET	φ38.1x1.5	ISO
l	3/4"	Glycol OUTLET	3/4"	NPT
m	3/4"	Glycol INLET	3/4"	NPT



10/09/2022

10BBL CLT