



Sagerology, Valparaiso, Ind.

E. C. P.



from the EXECUTIVE DIRECTOR

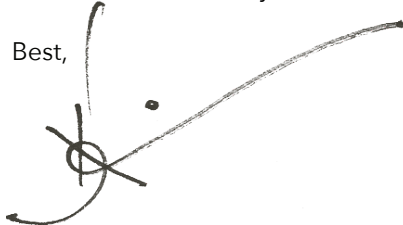
A hallmark of summer at the PoCo Muse is the flurry of activity behind the scenes. One of my favorite aspects of this season is our internship program. I'm constantly in awe of how our interns use their interests and abilities to make our museum a better place.

Logan Albright, pursuing a Bachelor of Music Education at Valparaiso University, is researching and writing about a Hillstrom Organ in our collection for a focused internship. The Hillstrom Organ Company was located in Chesterton in the early twentieth century. Look for Logan's work in a future PoCo Muse exhibit and publication.

Intern Ashley Vernon, majoring in Digital Media Arts at Valparaiso University, is working closely with Collections Manager Sarah Berndt and Collections Assistant Kae Eberhart on a comprehensive assessment of our collection. Stop by on a Wednesday or Thursday until August to ask Ashley about the most interesting aspects of the project.

Lastly, I'd like to thank Kae Eberhart for all of the excellent work over the last year. Kae came to us as an intern in 2022 and has since become an integral part of our team. Having secured a Bachelor of Arts in History at Valparaiso University, Kae will be pursuing a Master of Arts degree at Anglia Ruskin University this fall in Cambridge, England.

Hope to see you at the PoCo Muse (and the Porter County Fair) this summer!

Best,


Kevin Matthew Pazour
 Executive Director • PoCo Muse

P.S. Our extended hours on Thursdays through Labor Day are a great reason to get out of the house and see *Ever Yours*.

ABOUT THE IMAGES

Cover • This postcard depicts a couple sitting on Sager Lake's famous twisted tree. Postmarked April 9, 1909, it was published by Elmer E. Starr. "Sagerology" was a favorite extracurricular course for nearby university students. It was on Sager's Lake where some allege that "many hearts were pledged . . . when the moon was just right."

Right • The postcard is addressed to Mrs. Isaac Funderburgh of Huntington, Indiana. It reads, "My Dear Cousin: Was very glad for your card. Perhaps your ink was poor, but it could not be poorer than my pen. Yes, we are quite comfortable again. But we did have a chilly time for a while. Have the finest roommate on College Hill. Also have the nicest Bible Class, about ten girls enrolled, meet every Sunday morning. It keeps me rather busy though. Say, I appreciated the picture you sent very much . . . But I send a better one of the Valpo style. Ha! ha! By the way. I have not time for such superfluous performances. Yours, C.B.P."



SUMMER EXHIBIT UPDATES

There's always something new to see at the PoCo Muse. Our newest exhibit *Ever Yours: Postcards from the Golden Age* opened on May 12 in the Montague/Urschel Gallery. Many enthusiastic postcard fans have already visited this fresh and colorful exhibit in its first two months. There are over 200 postcards to explore, so it warrants return visits. Plan your first (or fourth!) trip to see all the postcards on display.

Another reason to visit the PoCo Muse this summer is to see new works displayed in our permanent exhibits. In the coming months we will update a few of our object pairings in *Connections* and refresh our Robert Cain Gallery with new artwork.

And don't forget about our extended Thursday hours (11a-7p) this summer between Memorial Day and Labor Day!



EVER YOURS: POSTCARDS FROM THE GOLDEN AGE

**Montague/Urschel Gallery
Through December 2023**

See hundreds of local postcards and learn about their production, circulation, and popularity during the early twentieth century.



EXTENDED EVENING HOURS

**Open late on Thursdays, 11a-7p
Memorial Day through Labor Day**

Evening hours at the PoCo Muse are made possible by the generosity of our donors.



CONNECTIONS

**Eunice Slagle Gallery
New Pairings in September**

Take a closer look. Gathered at the twelve stations are pairs of objects that speak to each other in surprising ways. The objects may appear different at first glance, but after closer consideration, they reveal an important relationship.

WANT TO SCHEDULE A TOUR? Visit pocomuse.org/tours.



PORTER COUNTY ART

**Robert Cain Gallery
New Artworks in August**

The Robert Cain Gallery honors M. Robert "Rob" Cain (1930-2022), a lifelong Valparaiso resident and beloved VHS art teacher. It features Cain's work and a revolving display of other pieces from our collection.



LOWENSTINE WWII ROLL OF HONOR

The *Lowenstine WWII Roll of Honor* commemorates Valparaiso citizens who contributed to the war effort during World War II. Originally displayed on the courthouse square between 1943 and 1973, it was installed in the PoCo Muse in December 2022.

JULY

POSTCARD POP-UP AT THE PORTER COUNTY FAIR

Thursday, July 20, through
Saturday, July 29, 12-9p

Porter County Fairgrounds, 217 E.
Division Road, Valparaiso, IN

Stop by our booth in the exhibitor hall during “the ten best days of summer” at the Porter County Fair. This year, we will bring *Postcard Pop-Up*, which builds on themes from our *Ever Yours* featured exhibit.

HISTORY HAPPY HOUR

Wednesday, July 12, 5-7p

Washington Street Taproom, 11
Washington Street, Valparaiso, IN

Talk local history over a drink with friends, history professionals, and amateur historians. *Free event for 21 and older; drinks not included.*

AUGUST

LIVING HISTORY: HISTORICAL TRADES

Saturday, August 19, 10a-2p

Southeast Corner of Porter County
Courthouse Lawn

We will be joined by living history interpreters displaying a variety of historical trades. Come see blacksmiths, weavers, cobblers, and more! At one time these professions were commonplace in society, found in almost every community, but they are now seldom seen, some nearly forgotten! Our interpreters have spent years researching their historical professions and replicating them to share with the public.

SEPTEMBER

DONOR TOUR WITH EXECUTIVE DIRECTOR

Saturday, September 16, 10a

PoCo Muse, 20 Indiana Avenue

Mark your calendars for Executive Director Kevin Matthew Pazour’s special guided tour of the PoCo Muse galleries and collection storage facility. *This tour is only for donors; RSVP required.*

POCO MUSE IN DUNELAND

Thursday, September 21, 1p

Hawthorne Park Community
Building, Porter, IN

Learn about what’s new at the PoCo Muse during Kevin Matthew Pazour’s talk for the Duneland Historical Society.



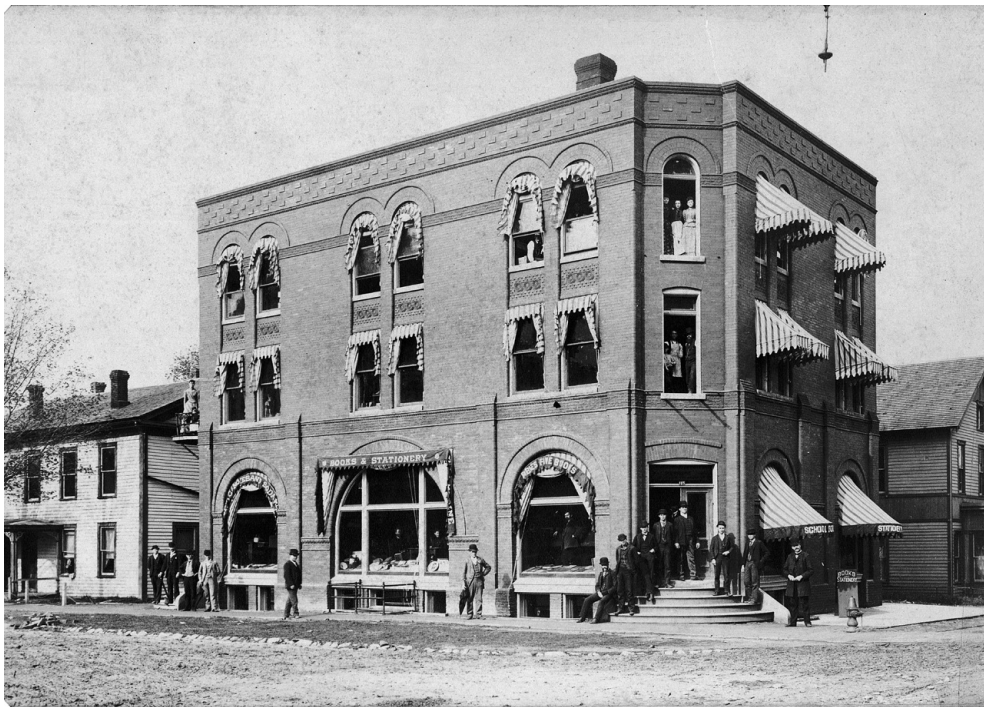
Above • Installation view of *Ever Yours: Postcards from the Golden Age* exhibit, May 2023.

LOCAL POSTCARD PUBLISHERS

Our featured exhibit *Ever Yours* highlights several small Porter County publishers who distributed their own postcards of local subjects. In the early twentieth century, large postcard manufacturers in Europe couldn't always send their photographers into small markets like Porter County. Therefore, local shopkeepers—like the three featured here—often sent their negatives of local imagery to the large printers for mass production.

Martin E. Bogarte (1855-1911)

Martin E. Bogarte was born in Ohio. When he was nineteen, he met Professor Henry Baker Brown and came with him to Indiana to assist Brown's work as President of Northern Indiana Normal School (now Valparaiso University). Bogarte quickly began teaching classes and became a distinguished member of the mathematics department. While



Above • View of M. E. Bogarte Book Company on South College Avenue, circa 1910.

Right • "Sager's Mill, Valparaiso, Ind.," postmarked on April 28, 1913 and published by M. E. Bogarte Book Company.



Sager's Mill,
Valparaiso, Ind.

local HISTORY

he was best known as an educator, he also operated a number of businesses, notably the M. E. Bogarte Book Company at the northeast corner of Short Street and College Avenue, where postcards depicting local scenes were popular with students at the neighboring university.

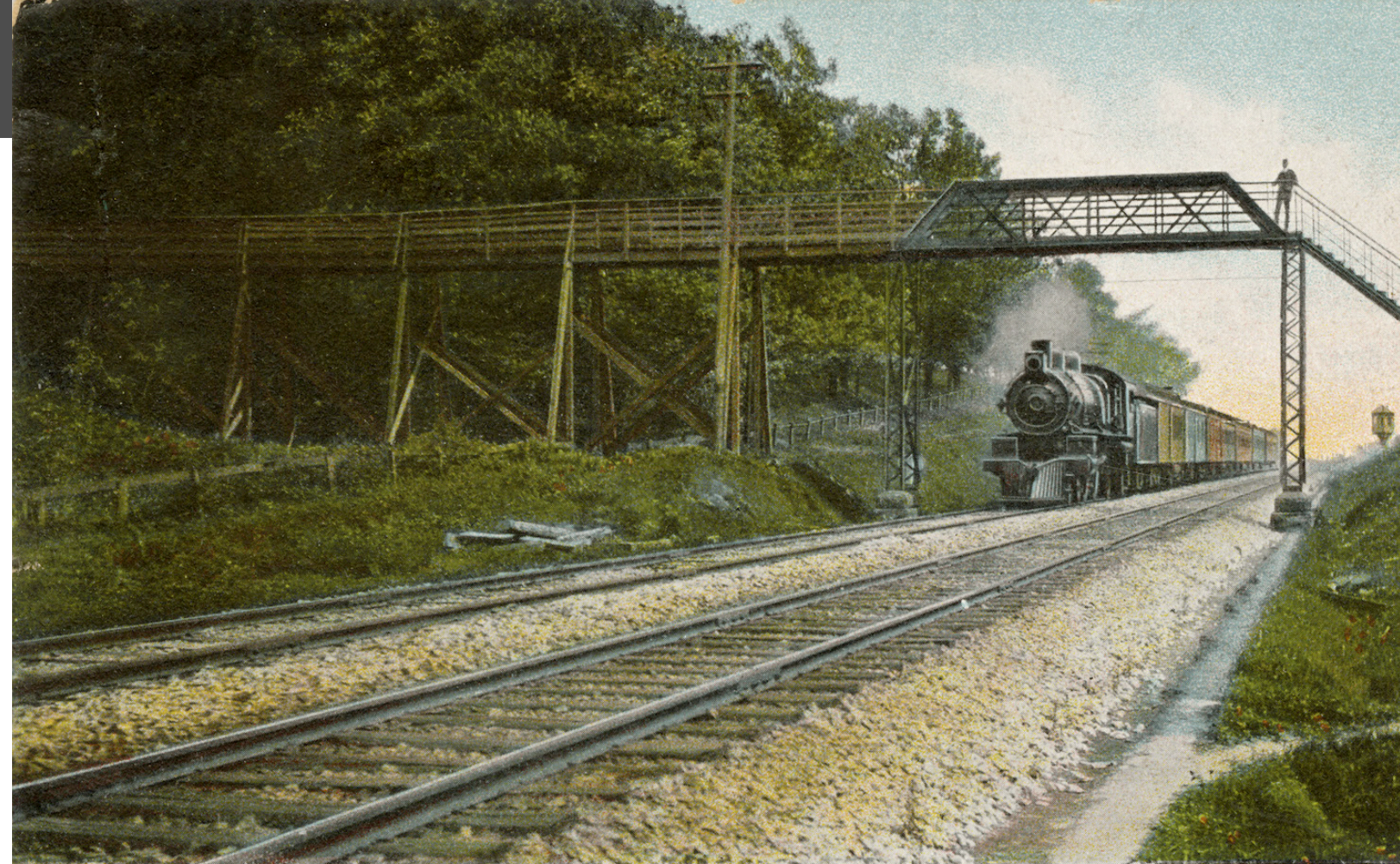
Elmer E. Starr (1873-1953)

Elmer Eugene Starr was a longtime Porter County resident who worked in Valparaiso as a jeweler, watch repairman, shop owner, and hardware clerk, following in the footsteps of his father. His novelty shop at 470 College Avenue sold and published postcards featuring scenes of Porter County, which were marketed mainly to tourists and Valparaiso University students. Interestingly, Starr also sold Kodak photo cards, essential for amateur postcard makers, and train tickets, perhaps explaining a common motif of his



Above • A 1914 postcard depicts the Domestic Science and Agriculture Building (later called DeMotte Hall) on Valparaiso University's campus. Elmer E. Starr's shop can be seen in the lower right corner. This postcard was produced by another local publisher, Charles W. Beam. Courtesy of Steven R. Shook Collection.

Right • "Lover's Repose, Bridge adjoining University," published by Elmer E. Starr, 1909.



Lover's Repose, Bridge adjoining University, Valparaiso, Ind.

postcards—the University Kissing Bridge over the Pennsylvania Railroad tracks (which can be seen in red on the back of the postcard on page 3).

Leopold Lilienthal (1869-1951)

Leopold “Leo” Lilienthal produced high-quality “real photo” postcards of Valparaiso locations between 1908 and 1913. Most of these postcards bore his name (handprinted on the negative), though some were imprinted with “Lilienthal & Szold,” denoting the department store business partnership in Valparaiso with his brother-in-law, Louis Szold. The storefront can be seen in the center of the image at right. For a period of time, Lilienthal was the director of the Valparaiso Standards baseball team. He and his wife Minnie later moved to Michigan City, where they opened a ladies’ ready-to-wear retail store.



Above • “Labor Day, Valparaiso, 1914,” postmarked September 1914 and published by L. Lilienthal. The writer of the postcard’s reverse message stands in the crowd before Szold’s Department Store (seen in center). She also identifies Mrs. Szold as the woman marked with the right “X” on the first float of the parade.

Right • “S.E. from Court House, Valparaiso, Ind.,” published by L. Lilienthal, 1909.



FAQ: HOW CAN I INCLUDE THE POCO MUSE IN MY ESTATE PLAN?

Planned Giving

Many supporters have demonstrated their commitment to ensuring that the PoCo Muse advances its mission for generations to come by including us in their estate plans. There are a number of different options for planned gifts:

- Designate a specific dollar amount or percentage of your estate as a bequest
- Make the PoCo Muse the beneficiary of a retirement fund, annuity, insurance policy, or bank account
- Direct in-kind gifts, real estate, securities, or tangible personal property as donations to PoCo Muse

Planned gifts create a lasting legacy by supporting programs, collections, exhibitions, professional positions, and our endowment fund with the Porter County Community Foundation.

We recommend you consult your attorney or financial advisor when considering a planned giving option as part of your estate.

Designating Your Gift

Unrestricted gifts to PoCo Muse allow your money to go where it is needed most, but you may also designate your gift to go towards a specific interest or project. Feel free to contact Kevin Matthew Pazour, Executive Director, at (219) 510.1836 or kevin@pocomuse.org, to discuss these issues.



Above • Eunice Slagle (1928-2019) was a longtime volunteer and supporter who directed a gift to the PoCo Muse from her estate. The Eunice Slagle Gallery memorializes her generosity.



Above • PoCo Muse supporters view artwork on display in the Robert Cain Gallery. Albert Photographic, April 2023.

general INFORMATION

POCO MUSE

20 Indiana Ave, Valparaiso, IN 46383

**Hours: Tuesday-Sunday, 11a-4p,
Thursdays until 7p through Labor Day**

The award-winning PoCo Muse maintains free general admission as this area's oldest institution devoted to the history and culture of Porter County.

MISSION

We engage Porter County's rich past with its evolving present to educate, enrich, and inspire our communities.

VISION

We believe our work of interpreting Porter County's history, art, and culture empowers residents to form a strong and purposeful sense of place, identity, and community.



VALUES

Free, Open, and Accessible

We meet the needs of our communities as a welcoming and inclusive gathering place.

Meaningful Storytelling

We connect stories with artifacts to encourage imagination, introspection, and empathy.

Hands-on Learning

We create opportunities to learn from interactive and intergenerational experiences.

Collaboration

We work together with people and organizations aligned with our mission and vision.

Responsible Stewardship

We uphold the collection and history of our institution with integrity and accountability.

STAFF & BOARD

Executive Director

Kevin Matthew Pazour

Exhibits & Publications

Jake Just

Visitor Experience Associate

Quinn Albert

Collection Manager

Sarah Berndt

Collection Assistant

Kaelie Eberhart

Interns

Logan Albright; Ashley Vernon

Board of Trustees

Joanne Urschel, *Chair*; Ronald Trigg, *Vice Chair*; Kathryn McMillan, *Treasurer*; Ellen Kapitan, *Secretary*; Brandi Anstine; Patricia Crise; Kathleen Evans; Ruth Johnston; Kevin Kerr; Jeffrey Lewis; Paul D. Miles; Carlos Rivero

EMAIL info@pocomuse.org

CALL (219) 510.1836

VISIT pocomuse.org