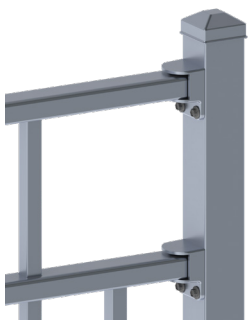




## Landscape Panel Fencing

Hampden steel and aluminium landscape fence panels are ideal for use in community facilities, and educational facilities such as early childhood education centres. Attractive and robust, our steel and aluminium fence panels are a low maintenance option for anyone looking for years of hassle-free perimeter protection. Ranging from 1.0m to 1.8m high and typically with flat tops, they provide an effective and safe barrier.



### Easy to install, easy to maintain

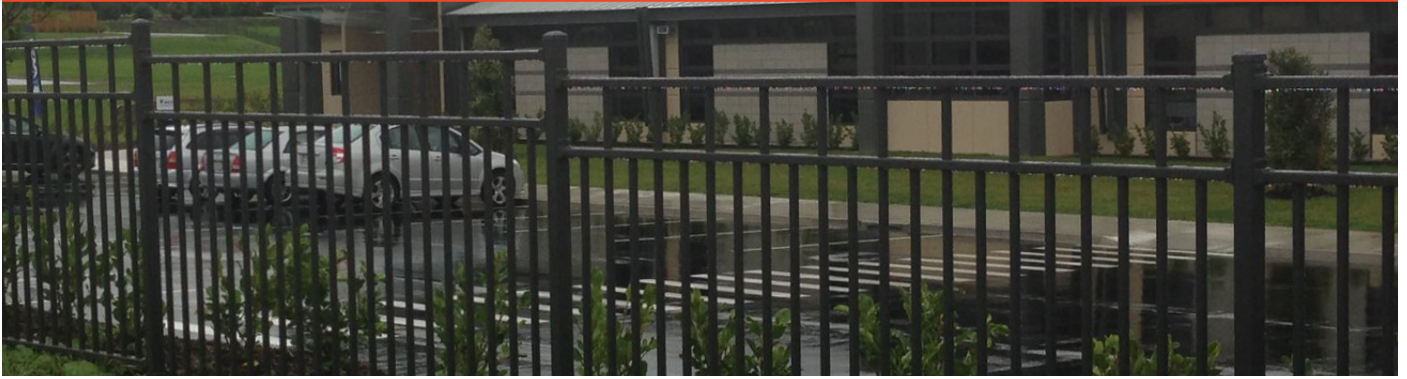
All of our pre-made fence panel products are low-maintenance which means they are an extremely cost-effective option for most fencing applications. Only the highest quality, most robust materials are used in our fence panels to ensure they stand the test of time, and hot dip galvanising with an attractive powder-coating finish means there's also no compromise on style.

### Ideal Application

- Schools
- Vertical Builds / Apartments
- Commercial Properties
- Subdivisions
- Retirement Villages



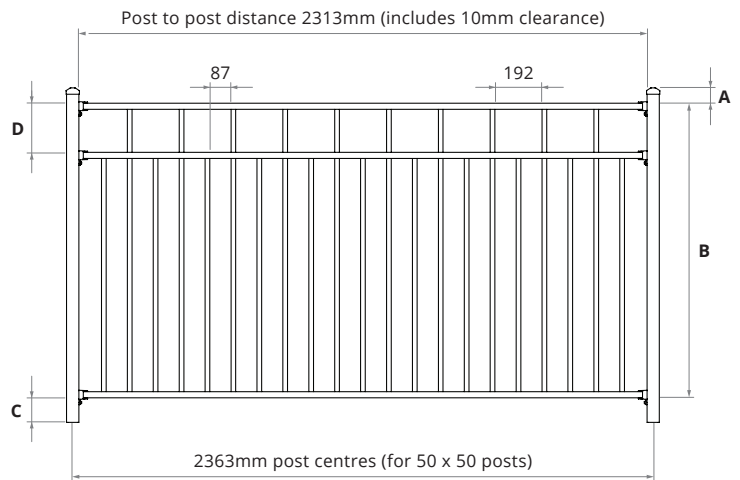
# Landscape Panel Fencing



## The Presley Modern Tubular Aluminium Panels And Gates

Aluminium 2 rails, 38x25mm and 2303mm wide with 19mm square pickets

Height	A	B	C	D
m	mm			
1.0	50	1000	50	2 Rail Only
1.2	50	1200	50	200
1.5	50	1500	50	200



### Specifications

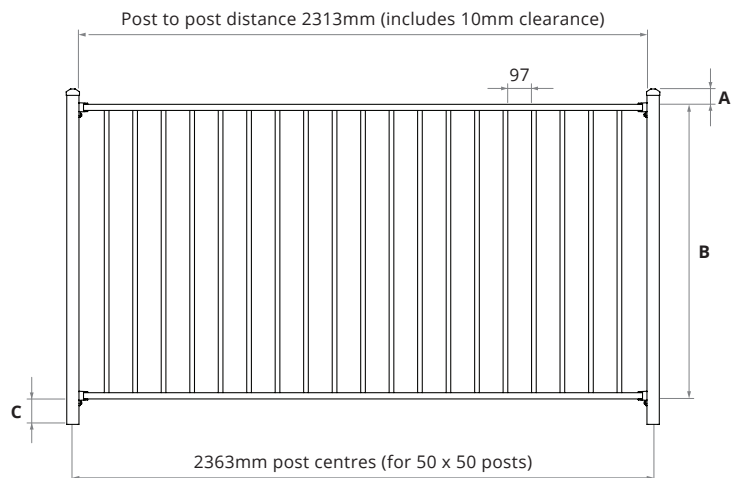
**Material:**

- Aluminium
- Pickets: SHS 19 x 1.2mm
- Rails: RHS 38 x 25 x 1.5mm

## The Orbison Economic Tubular Aluminium Panels And Gates

Aluminium 2 rails, 38x25mm and 2303mm wide with 19mm round pickets

Height	A	B	C
m	mm		
1.0	50	1000	50
1.2	50	1200	50
1.5	50	1500	50



### Specifications

**Material:**

- Aluminium
- Pickets: CHS 19 x 1.2mm
- Rails: RHS 38 x 25 x 1.5mm

You will generally only need a building consent for fences over 2.5m. However you may still need a resource consent for some fences below this height. Contact local council to check the specific height restrictions and design requirements for your local area.

**For more specifications and information please visit [www.hampden.co.nz](http://www.hampden.co.nz) or call the Hampden team.**