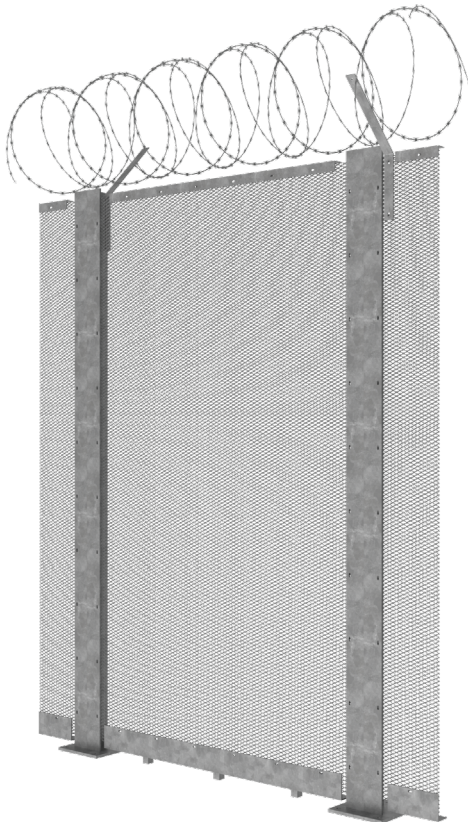


Expamet Expanded Metal Mesh

Expamet 'Expanded Metal' Mesh as the name implies is a single sheet of mesh produced when a flat base metal plate is simultaneously sheared and stretched into diamond shaped strands and left intact at the knuckles. These are set at uniform angles to add strength and rigidity to the finished product.



Anti-climb performance with good visibility

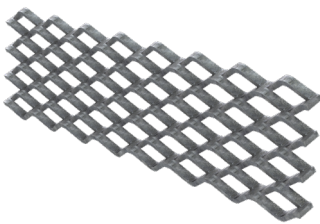
The high strength to weight ratio makes it suitable for many industrial and high-security applications. No loose strands or welds means minimal deterioration from constant exposure or movement.

A further feature is the provision of an excellent anti-climb surface, making it perfect for prison environments. The open nature of the product provides good visibility through the mesh as well as the easy passage of air and sound whilst ensuring security and protection.

Expanded metal is one continuous single sheet of mesh produced when a flat metal plate is sheared and stretched but is left intact at the 'knuckles'. It is available in a variety of thicknesses with differing sizes and designs of the apertures.



A highly rigid, strong solution



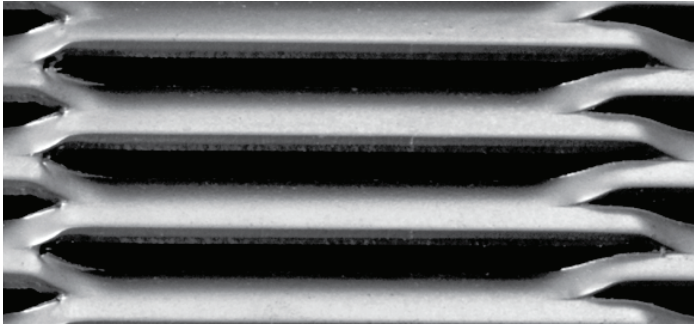
The strands and knuckles are set at a uniform angle to the plane of the sheet. This adds strength and rigidity and distributes the load to the supporting frames. Because there

are no welds or joins it operates as a structural member that distributes loads evenly over a wide area.

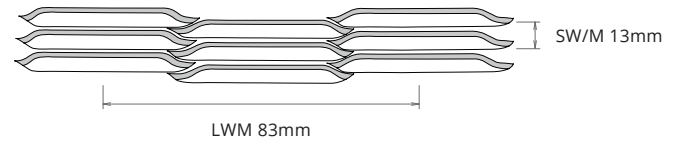
Ideal Application

- Prisons
- Correctional Facilities
- Detention Centres
- Court Houses
- High Risk Sites / Areas
- Psychiatric Hospitals
- Ramps
- Industrial Sites
- Architecturally Designed Sites
- Airports and Ports
- Hazardous Goods Sites

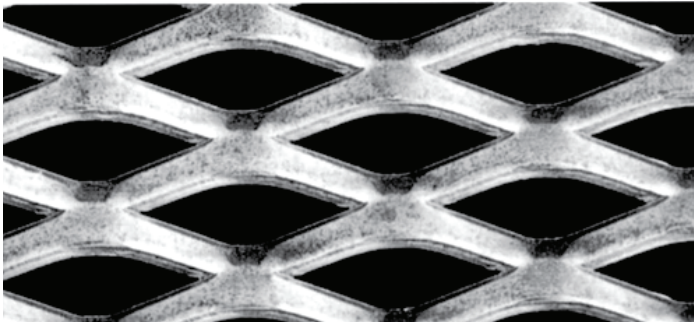
Expamet Expanded Metal Mesh



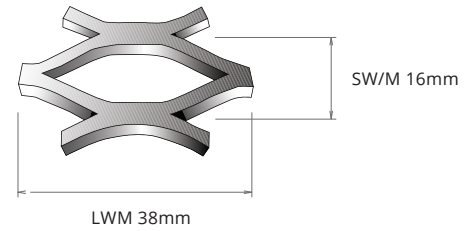
GM Security Range



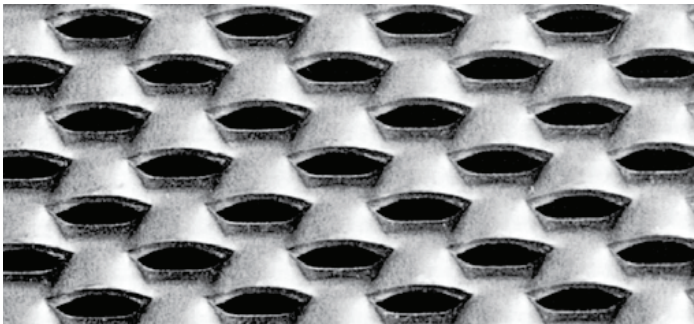
GM 3050



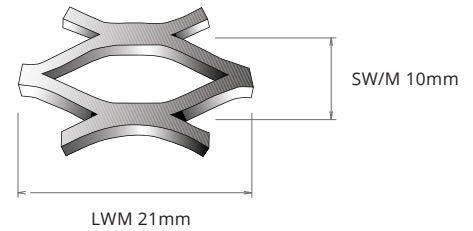
SM Security Range



SM 3050



SM Security Range



SM 30040

Product Code	Alternate Code	Standard Sheet Sizes mm		Nominal Size of Mesh mm		Approx Standard Size mm		Weight Kg/M ²	Mesh Height mm	% Open Area
		SW	LW	SW	LW	Thick	Width			
GM3030	N/A	2400	1800	13	83	3.0	3.0	10.87	6.0	52.0
GM3050	N/A	2400	1800	13	83	3.0	5.0	18.11	10.0	30.0
SM3050	HV030	5000 4500	1800	16	38	3.0	5.0	14.72	10.0	38.0
GM30040	JE1116	3000 2400	1800	10	21	3.0	4.0	18.84	8.0	20.0
GM30030	JE1112	3000 2400	1800	10	21	3.0	3.0	14.13	8.0	25.0
GM2547	1125	3000 2400	1800	10	30	3.0	4.7	14.76	6.0	24.0

You will generally only need a building consent for fences over 2.5m. However you may still need a resource consent for some fences below this height. Contact local council to check the specific height restrictions and design requirements for your local area.

For more specifications and information please visit www.hampden.co.nz or call the Hampden team.