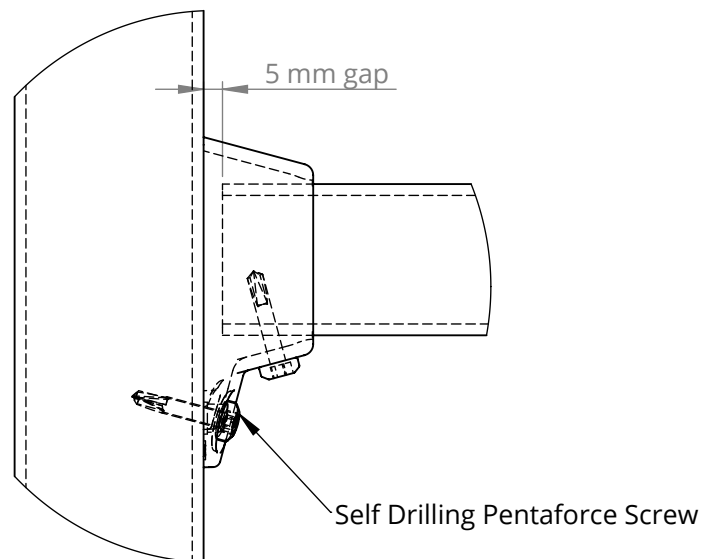
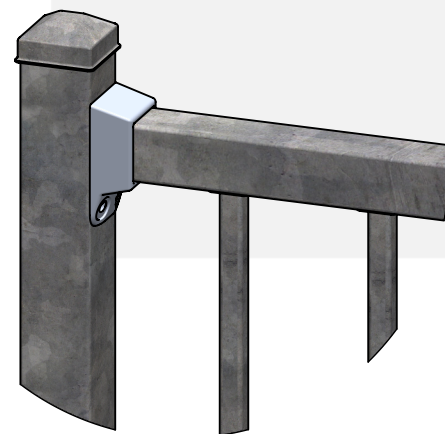


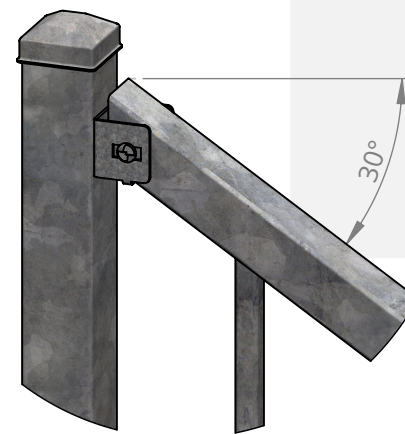
### Fixing Detail



### TYP Bracket upto 15 Degree Rake



### Alternative Bracket upto 30 Degree Rake (Allow extra 10mm between posts)



### Specs :

- Post Size: SHS 50 x 3mm or SHS 65 x 3mm (For Balustrade)
- Pickets: SHS 16 x 1mm
- Rails: SHS 40 x 1.6mm
- Raking Brackets 30 degrees

### Description :

Boss 950h  
Steel Raking Panel

### Material :

Z275 Pre-Galvanised Steel

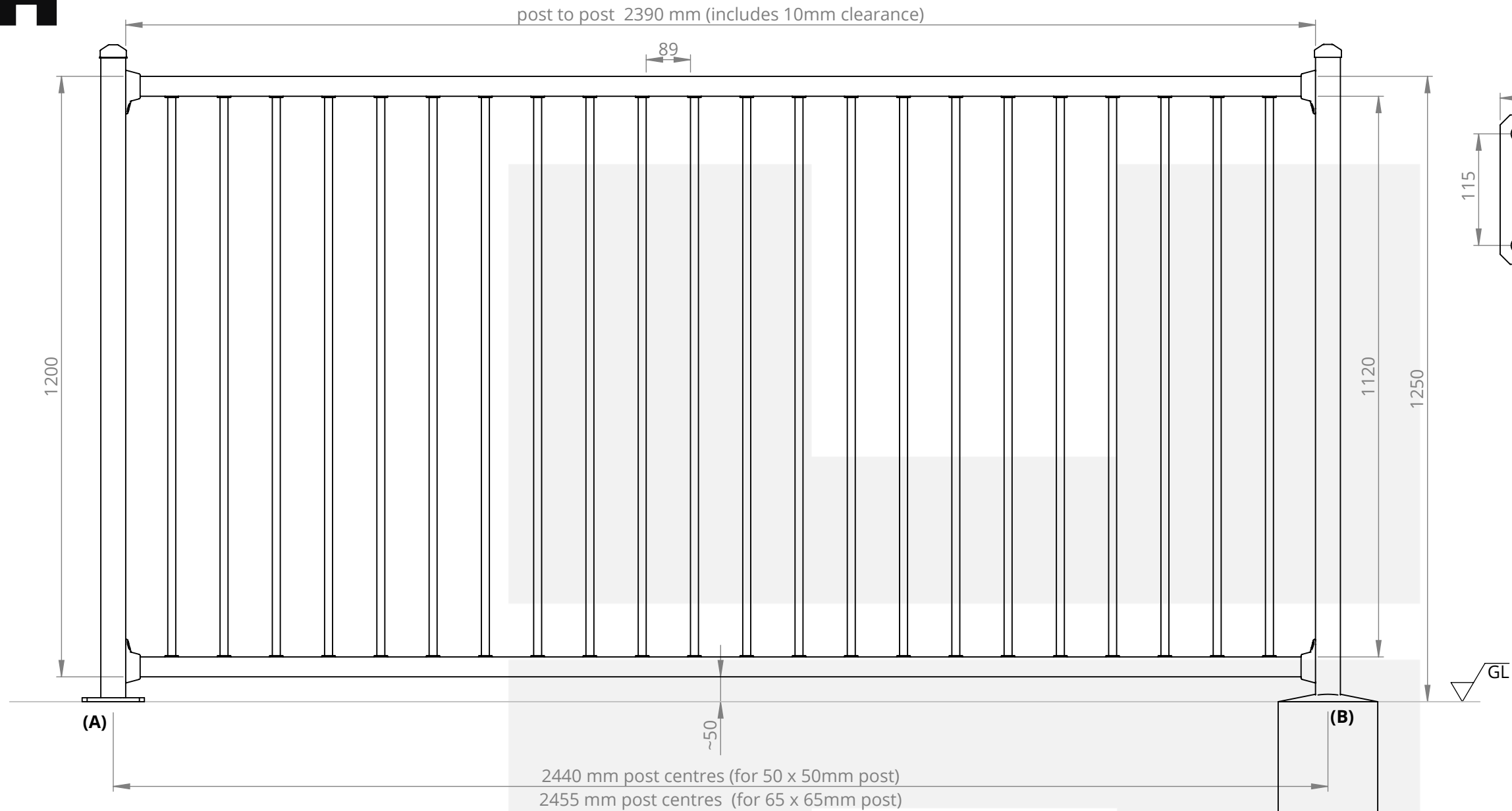
### Finish :

Standard Powder Coated/Epoxy  
Powder Coated Available

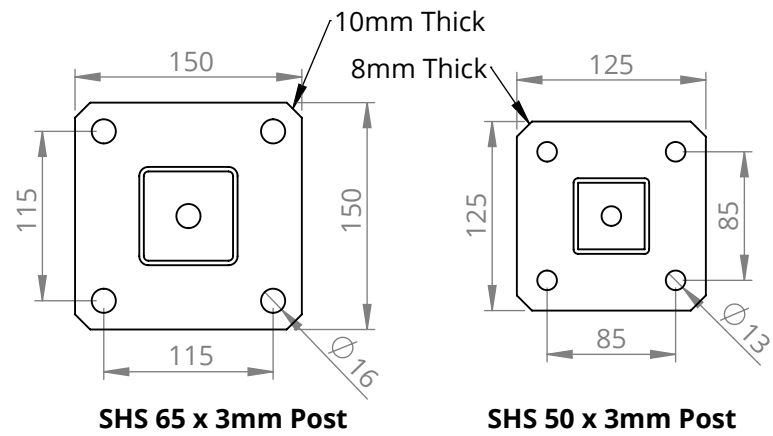
Panel Weight : 23 Kg Drawn : KSB

### Notes :

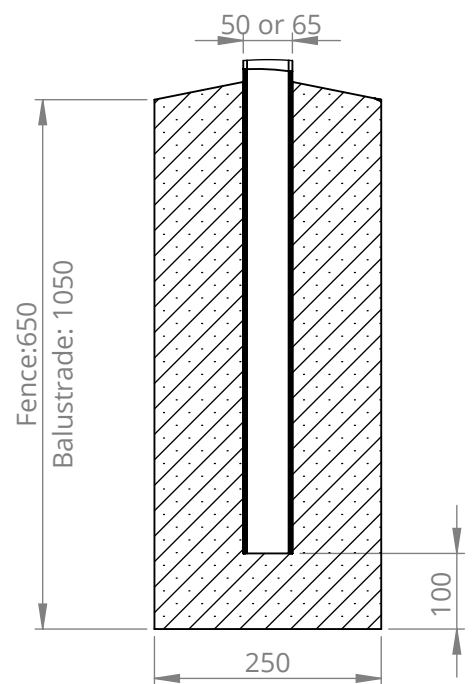
- Footing dimensions subject to change to suit ground conditions
- Balustrade compliant (Refer PS1) with SHS 65 x 3mm Posts



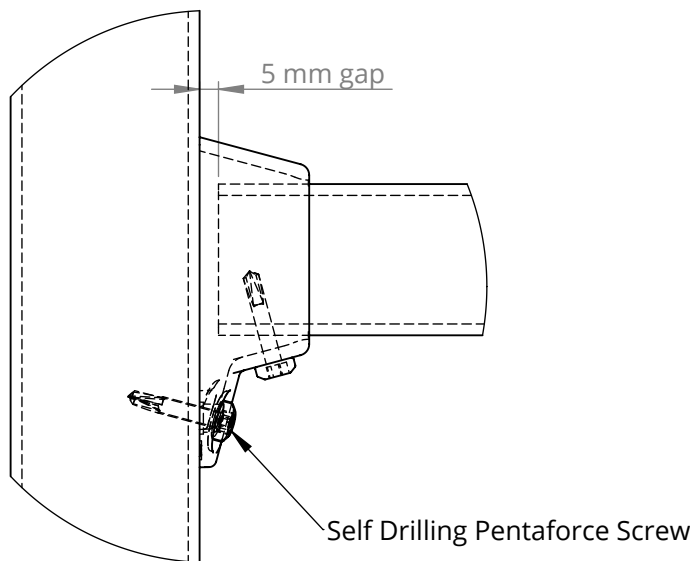
A) Flanged Post



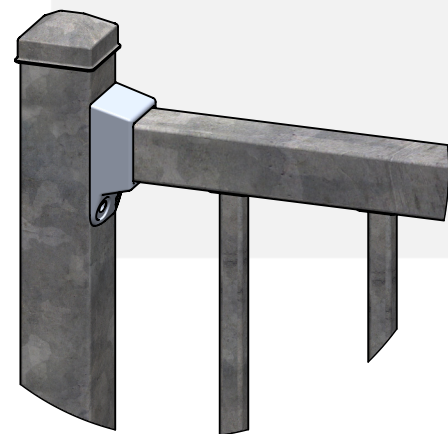
B) Inground Post



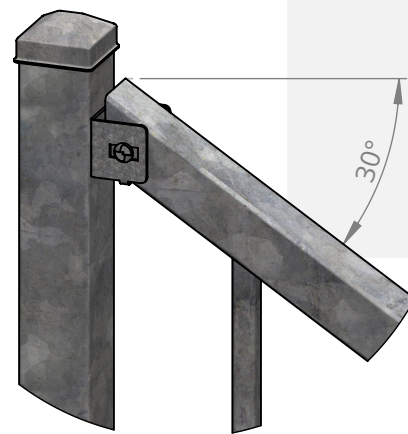
Fixing Detail



TYP Bracket  
upto 15 Degree Rake



Alternative Bracket  
upto 30 Degree Rake  
(Allow extra 10mm between posts)



Specs :

- Post Size: SHS 50 x 3mm or SHS 65 x 3mm(For Balustrade)
- Pickets: SHS 16 x 1mm
- Rails: SHS 40 x 1.6mm
- Raking Brackets 30 degrees

Description :

Boss 1200h  
Steel Raking Panel

Material :

Z275 Pre-Galvanised Steel

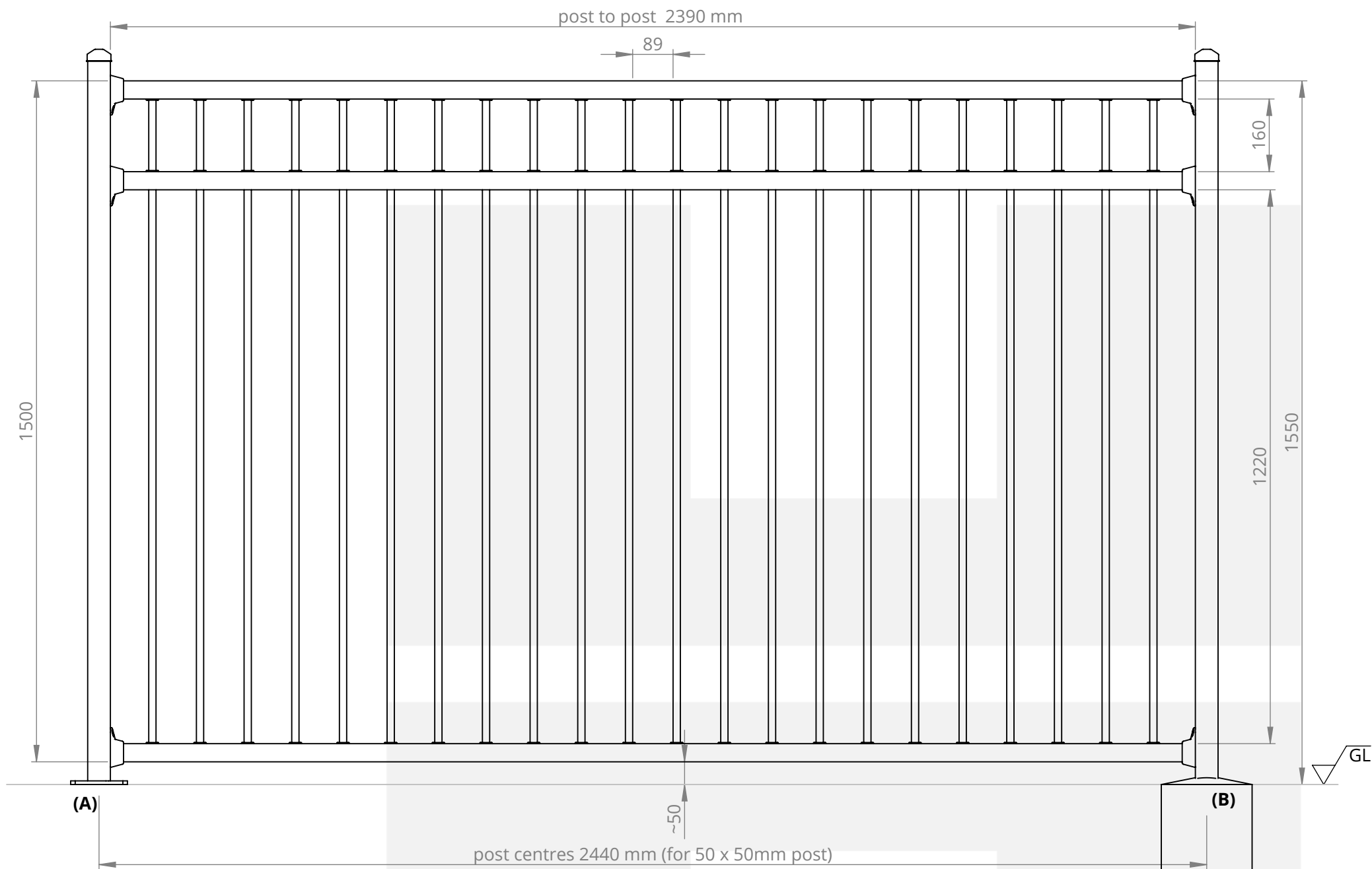
Finish :

Standard Powder Coated/Epoxy  
Powder Coated Available

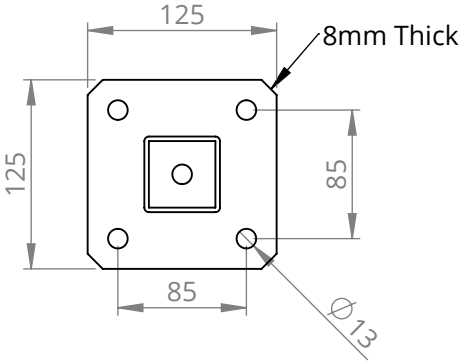
Panel Weight : 27 Kg Drawn : KSB

Notes :

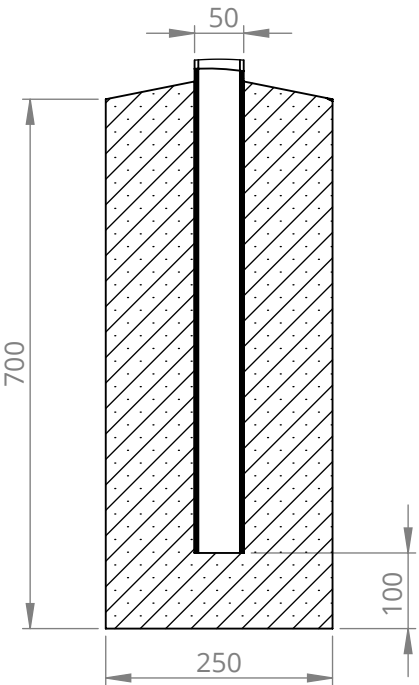
- Footing dimensions subject to change to suit ground conditions
- Balustrade compliant (Refer PS1) with SHS 65 x 3mm Posts



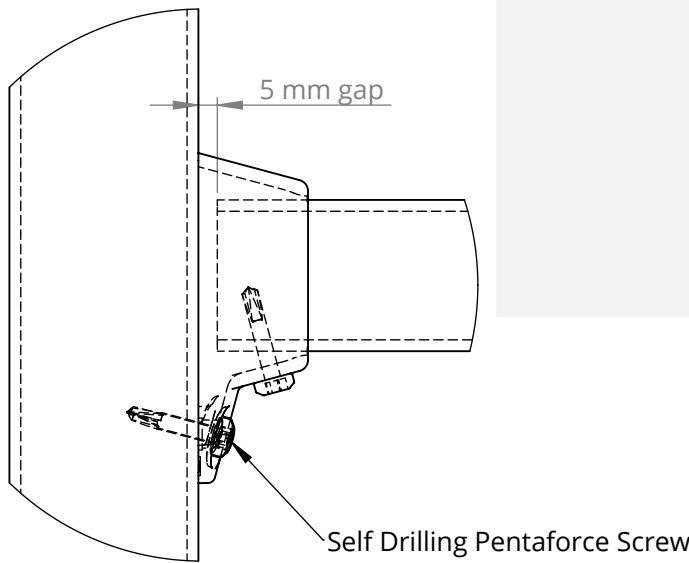
A) Flanged Post



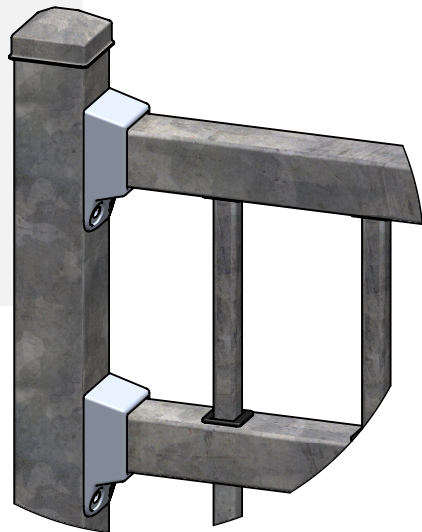
B) Inground Post



Fixing Details



TYP Bracket  
upto 15 Degree Rake



Specs :

- Post Size: SHS 50 x 3mm
- Pickets: SHS 16 x 1mm
- Rails: SHS 40 x 1.6mm
- Raking Brackets 15 degrees

Description :

Boss 1500h Flat Top  
Steel Raking Panel

Material :

Z275 Pre-Galvanised Steel

Finish :

Standard Powder Coated/Epoxy  
Powder Coated Available

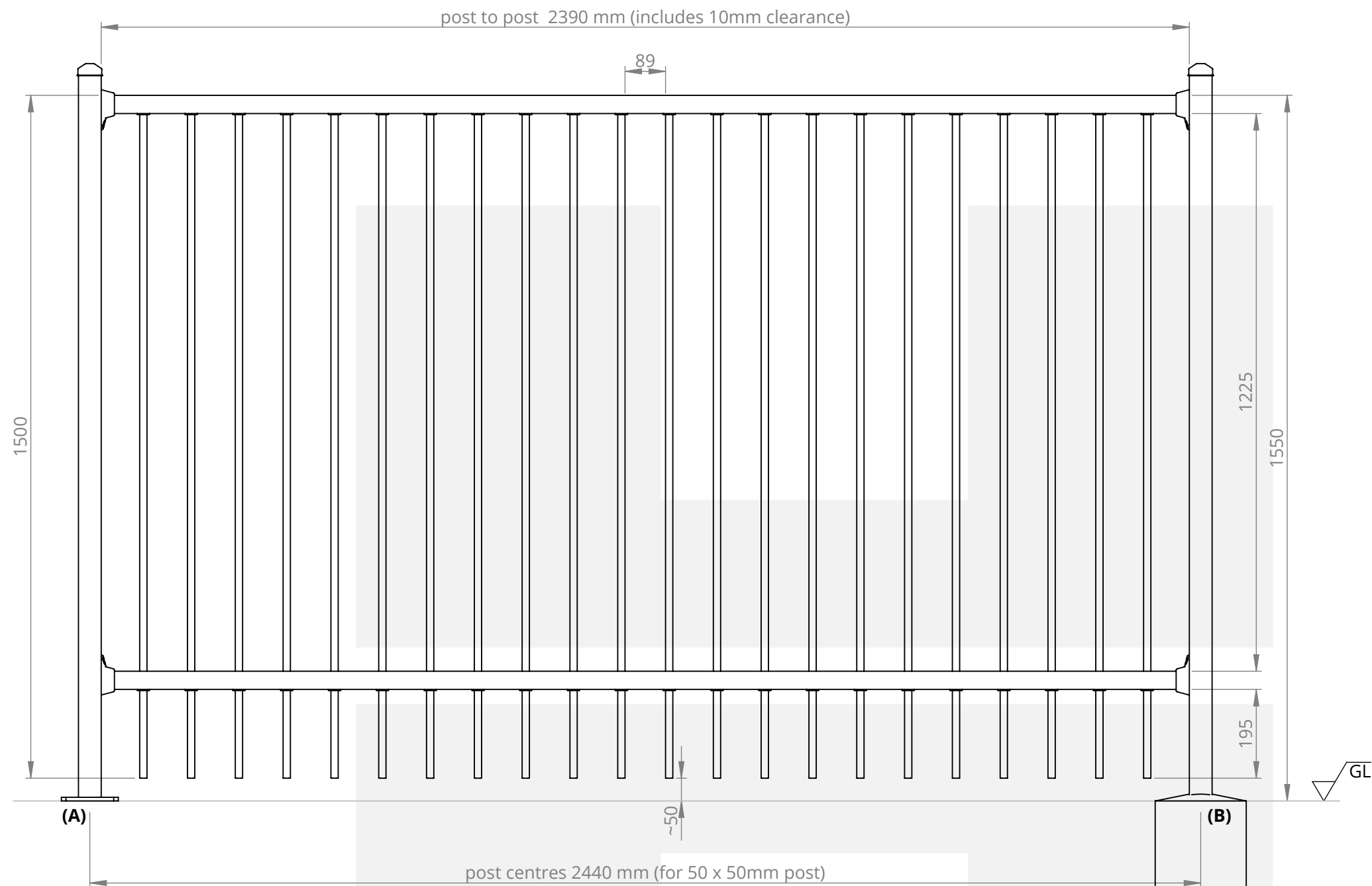
Panel Weight : 35 Kg    Drawn :    KSB

Notes :

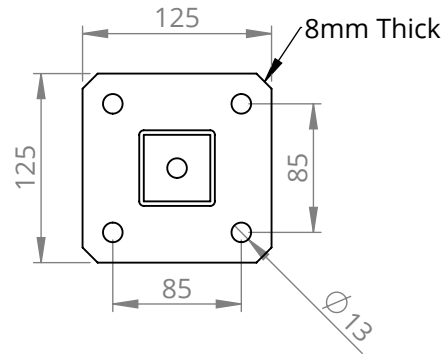
- Footing dimensions subject to change to suit ground conditions



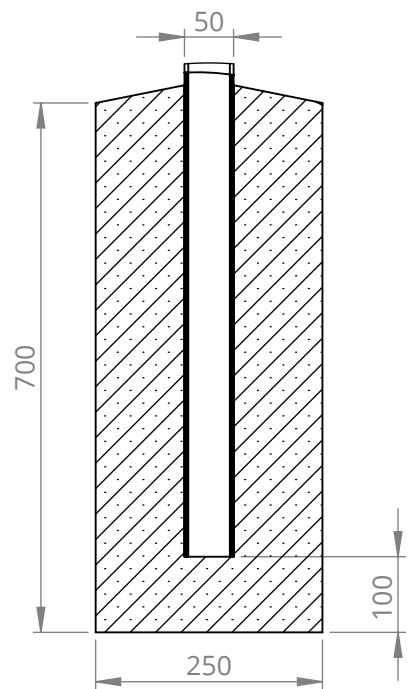
Spec Sheet



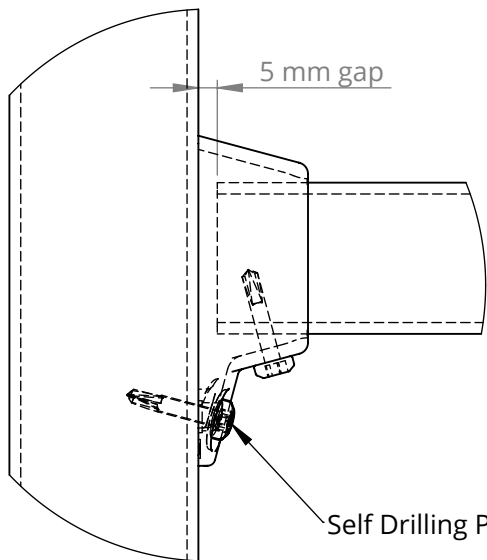
A) Flanged Post



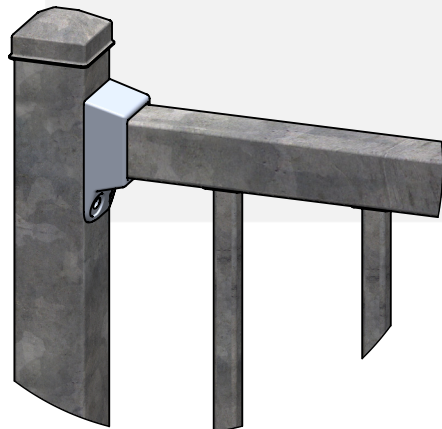
B) Inground Post



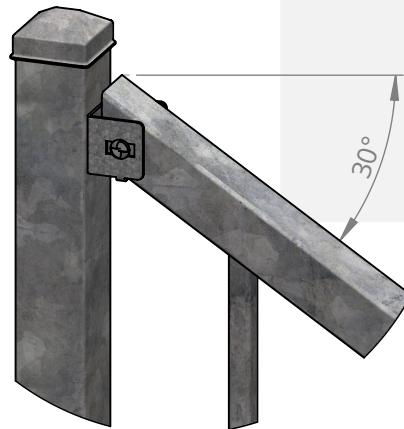
Fixing Detail



TYP Bracket  
upto 15 Degree Rake



Alternative Bracket  
upto 30 Degree Rake  
(Allow extra 10mm between posts)



Specs :

- Post Size: SHS 50 x 3mm
- Pickets: SHS 16 x 1mm
- Rails: SHS 40 x 1.6mm
- Raking Brackets 30 degrees

Description :

Boss 1500h Rod Bottom  
Steel Raking Panel

Material :

Z275 Pre-Galvanised Steel

Finish :

Standard Powder Coated/Epoxy  
Powder Coated Available

Panel Weight : 31 Kg    Drawn :    KSB

Notes :

- Footing dimensions subject to change to suit ground conditions