



Garibaldi Squamish

JOIN THE CONVERSATION

SPRING 2020



MOVING FORWARD IN 2020

We have major milestones in place for this year and are excited to get to work on moving forward with our resort. We are meeting with our technical experts to update infrastructure components of the Master Plan, initially focused on utilities and transportation.

2020 BIKE TRAIL AND SKI RUN MAP



PHASE I OF OUR FUTURE BIKE PARK

Since preparing the Draft Mountain Bike Feasibility Report in 2018, we have continued our work with Gravity Logic, a locally based firm that is one of the leading mountain bike park designers in the world. The current plan for Phase I (the first 5 years of resort operation) is for a mountain bike park with 55 km of trail. The draft Phase I plan includes preliminary trail locations. The trail system is also designed to flex with seasonal weather.

Our next steps for the mountain bike system include revisiting the trail alignment once the EA Certificate technical reports are complete. With the next layers of technical site information, detailed design will occur to fine-tune trail alignment, features, and construction requirements.

Phase I of the project includes 55 km of mountain bike trails that will come online for riders in the first 5 years of resort construction.



SQUAMISH LOVES CARDIO

WALKING
BIKING
CLIMBING
RUNNING
HIKING
CAMPING



MORE GREAT SHOTS FROM OUR INSTAGRAM FAMILY!

@chinitta

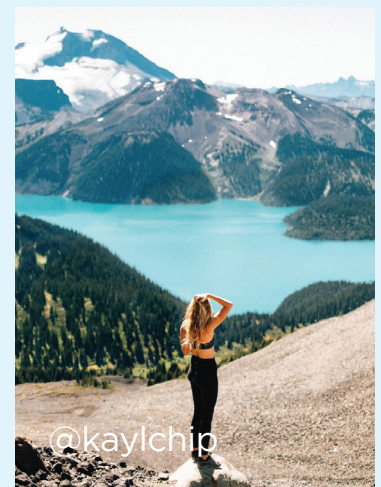
Over the past two years, we have continued collecting feedback from the community through our online survey. Through more than 2,000 responses, we've noticed one overarching theme – Squamish loves cardio!

As an all-season resort, summer activities will be an integral part of our Master Plan so we asked what YOUR summer priorities are. The top choice was high-intensity trails to spectacular viewpoints, similar to The Chief or Sea to Summit Trails. After that, respondents would like to see lift-accessible hiking trails and off-leash dog friendly areas.

Another key aspect of the Master Plan will be village activity and facility design to provide spaces for community interaction. Your top priorities for community spaces are designated camping areas, a mountaintop restaurant, and a music amphitheater for festivals and events.



@tristannatt



@kaylchip

TAKE THE SURVEY!

More night ski runs? E-bike rentals? A venue for carbon-neutral music festivals? We'd love to hear what you'd like to see in an all-season resort - your feedback will help guide the design and vision.

Go to www.garibaldiatsquamish.ca/highlights to fill out the quick 5-minute survey!

Garibaldi Squamish

JOIN THE CONVERSATION



JOIN US ON FACEBOOK
@Support_Garibaldi_Resort



FOLLOW US ON INSTAGRAM
@GaribaldiAtSquamish

Learn more on our website at
www.GaribaldiAtSquamish.ca