



The History of  
St. Paul's  
Lutheran Church  
Waukegan,  
Illinois



90<sup>th</sup> Anniversary  
Edition  
(1930-2020)

**The History of St. Paul's Lutheran Church  
Waukegan, Illinois  
90<sup>th</sup> Anniversary Edition  
(1930-2020)**

**Robert C. Sonders  
John Robinson  
Mary Ellen Modlin**

**Edited by Molly Fletcher and Karen Byers**



# Contents

Forward by Pastor Mark Rollenhagen	3
Part I. The First Fifty Years by <i>Robert Sonders</i>	
1. Preface	4
2. Gerberding Era	5
3. Romeis Era	17
4. Voorhees Era	23
5. Weeg Era	29
6. Simone Era	34
7. Gallup Era	47
8. Salstrom Era	54
9. Acknowledgement	116
Part II. Senior Pastor Thomas Church Era 1981 to 2003 by <i>John Robinson</i>	118
Part III. Pastor Caroline Satre and Pastor Brad Davick Era 2003 to 2017 by <i>Mary Ellen Modlin</i>	135
Part IV. Pastor Mark Rollenhagen Era 2018 to Present by <i>Mary Ellen Modlin</i>	143



*Old Church*



*New Church*



*New Sanctuary*

## Forward

The year of St. Paul's 90<sup>th</sup> anniversary surely will go down as its strangest.

We are in the year of the pandemic. "Coronavirus" and "Covid-19" are terms that jumped from the realm of science and medicine into everyday conversation.

Zoom is something many do almost every day and it has nothing to do with the sound of a fast car. It is easy to spot the disinfectant wipes section of a grocery store aisle: the one with the empty shelves. Face masks and hand sanitizer lay on the counter next to our car keys.

Life has changed quickly and will never be quite same. But amid it all amazing ministry persists through St. Paul's.

Bible studies and fellowship continue online with Zoom. Worship happens on YouTube. We check on each other through a new Care Network that utilizes phone calls, text messages and email. We are feeding and clothing our neighbors. We are working with community partners to improve mental health care and provide affordable housing.

We are having difficult but loving and forward-looking conversations about sexuality and racism.

We are committing to the future of Lutheran ministry and proclamation of the Gospel by helping pastoral interns prepare for ordained ministry in the Evangelical Lutheran Church in America.

None of it is by accident, epiphany or chance. It is the result of 90 years of ministry grounded in the Gospel of Jesus Christ that was planted at the intersection of Lewis Avenue and Garden Place in Waukegan, Illinois, in 1930.

It is a remarkable story of God's love manifested in a beloved community and captured by the words and photographs in these pages, yet far from over.

As any Christian ministry should be, it was a group effort. Thanks to St. Paul's Historian Bob Sonders and the History Team of Mary Ellen Modlin, Becky Ingram, and Debbie and John Robinson, with editing support from Molly Fletcher and Karen Byers, for this work of love and gift to us all.

May it serve as an enduring reminder that we have been, are and always will be called into relationship with Christ, one another and the neighbors God gives us – for the sake of the world.

Thanks be to God!

Yours in Christ,

Pastor Mark Rollenhagen

# The First Fifty Years



**Robert C. Sonders**

## **Preface**

St. Paul's Lutheran English Evangelical Church began humbly from a charter membership roll of fifty-one to 357 confirmed members by the end of 1951. During the first 22 years since its organization on May 15, 1930, five pastors succeeded one another in full-time service to the church. The Reverend Paul J. Gerberding brought St. Paul's into being as Field Missionary in January 1930, and relinquished his duties to our first pastor in April 1931. Called during his senior year in seminary, the Reverend H. Paul Romeis assumed his pastorate on May 1, 1931, and served until Reformation Sunday, October 31, 1936. He, in turn, was succeeded on December 1, 1936 by the Reverend Edward A. Voorhees, who ministered until April 22, 1942. Our third pastor, the Reverend A. Howard Weeg, began on May 15, 1942, and served until September 15, 1943. The fourth pastor of the congregation was the Reverend Albert A. Simone, who assumed the pastorate on November 14, 1943 and remained until January 19, 1947. Our fifth pastor, Reverend Wesley H. Gallup, served from April 1, 1947 until February 1, 1952.

Reverend Alden Luther Salstrom, our sixth pastor, served at St. Paul's for 28 years, beginning on July 15, 1952 and retired on November 1, 1980. During his ministry, a parsonage, a new church, and an educational unit were built, all within a decade. At its peak in 1964, there were 858 communing members and a Sunday school attendance of 366 students. With God's love and guiding spirit to the Saints of St. Paul's, numerous challenges were met with courage and faithfulness, all of which grew from the mustard seed we called "the little fabricated barrack church."

The goal to cover St. Paul's historical accounts from its beginning in 1930 to 1980 was not so much to add to the memorable events listed in past pictorial directories, but to provide you with "the rest of the story."

# Gerberding Era

## Reverend Paul J. Gerberding: Our Mission Pastor (January 1930 - April 1931)



On May 15, 1930, Reverend Paul J. Gerberding, LCA Field Missionary, established St. Paul's English Evangelical Lutheran Church as a mission with a charter membership of 51.

Pastor Gerberding was born June 2, 1873, near Pittsburgh, Pennsylvania, the son of Henry George and Catherine Gerberding, née Morgenstern. He attended Lima College and entered the Chicago Lutheran Seminary to prepare for the ministry. On September 5, 1900, he and Daisy Ovitt were united in marriage.

On May 1, 1903, following his graduation from seminary and his ordination to the ministry, he accepted the call to become pastor of St. Matthew's Lutheran Church in Chicago. Here he served for 12 years. After a brief pastorate in LaGrange, Indiana, he accepted a call to become Superintendent of Missions in the Iowa Synod. He occupied this office for seven years and then returned to Chicago as pastor of Norwood Park Church.



In 1927, he was again called to the work of planting and developing home missions for the United Lutheran Church. He served in this capacity for twenty-two years, organizing congregations in Illinois, Iowa, Missouri, Connecticut, Maryland, California and Montana. He organized twenty-three congregations – nine in Illinois, four in California, one in Maryland, one in Connecticut, one in Montana, and six in Iowa. He is the author of “When Christ Comes, What Sayeth the Scriptures,” and he originated the Ideal Sunday School Card System. He retired on June 30, 1949.

After a brief illness, the Rev. Paul J. Gerberding died on March 8, 1952 at Manor Hospital, Chicago. He was survived by his widow, Daisy, three children, Mrs. Evelyn Smith of Englewood, California, Mrs. Gladys Dicks of Chicago, and Dr. Harold Gerberding of Longview, Washington, as well as seven grandchildren.

### **A Humble Beginning**

“The early years of this church brings to mind a passage in Matthew. Christ is speaking to the Pharisees and he makes the strange statement – something greater than a temple is here. Jesus is telling them that through him, when a people become the body of Christ – the real church – that is where God is to be found. In the humble beginnings of any congregation, the church is definitely associated with being a people and not a temple.”

(Temple talk by Odny Hjelmeland Reckling on May 18, 1980, St. Paul’s 50<sup>th</sup> Anniversary)

## **The Start of St. Paul’s English Evangelical Lutheran Church**

Waukegan experienced major population increases from 1890 to 1930 during the rapid industrialization of the Midwest. This, plus rising political tension and World War I in Europe, brought large numbers of immigrants to the area, primarily from southeastern Europe and Scandinavia. Each ethnic group established its own residential enclave, usually anchored by a church or social hall.

Waukegan, in 1930, was a bustling small city with a population of 33,499. Johns Mansfield, American Steel and Wire, and Johnson

Motors were the primary businesses in the area. Transportation was readily available via street cars that went along Glen Flora Avenue and Washington Street down to the heart of the business section on Genesee Avenue. There was also a streetcar route from Waukegan to the Loop in downtown Chicago along the path known as Northshore Rail.

It seemed the community of Waukegan was moving northwest quite rapidly. A survey of the Glen Heights neighborhood in 1927 indicated that 23% of those interviewed were Lutherans. Hence, in January, 1930, synod mission developer Reverend Paul J. Gerberding met with a group of businessmen, working people, and immigrants at Whittier School in 1930 to form a mission church. Odny Reckling wrote: "This group of Lutherans was distinguished not so much by their being full of faith as by the being faithful. There was a courage and steadfastness about them as they trusted God to make possible the organization of a congregation in the depths of a depression."

First came the matter of a place of worship. A few homes, farms, and dirt roads surrounded the corner of Lewis and Garden Place. The chosen location was on the northwest corner of Lewis and Garden Place, at 1920 Garden Place, across the street from a newly-built elementary school. Established in 1927, Whittier was the perfect neighbor for a church looking to attract families with children. The price of one lot (Lot 35) was \$1,050. Since it was not large enough to accommodate the church as planned, prudence suggested an additional lot (Lot 36) be purchased at a cost of \$1,250. At this time the Great Depression was just beginning. In a quote from a member of our church, Ruth Hjelmeland: "A year later these lots could have been bought for a song." Whittier School at that time had two portable World War I barracks secured from Fort Sheridan. One of these was sold to the congregation for \$4,800 so that they might use it as a place for worship while they prepared to build the sanctuary. Ground was broken on March 6, 1930.

A check of \$50.00 was received on March 30, 1930 from the Board of American Mission, Lutheran Church of America, which was spent as follows: \$7.50 for refurnishing an altar candle stick and cross, \$35.00 for a piano, and \$12.50 for moving a piano. Other furnishings were donated. Mr. and Mrs. Nermitz donated an organ and St. Luke's Church of Park Ridge gave the church and Sunday school platforms and two book cabinets. The Evangelical Church of Oak Park donated a

pulpit, altar, a Sunday school register board, two book cabinets, a baptismal font, and two pulpit chairs. Mr. Louis Mueller of Glen Ellen gave a choir rail. Field Missionary Reverend Gerberding covered incidental expenses for the first service and was later repaid from the offering which totaled \$27.96 on the day of church dedication.

This set the scene for the church's first service, held on April 6, 1930. Forty-one people attended the morning service and thirty-five attended the evening service. Nineteen adults signed up to be charter members of St. Paul's English Evangelical Lutheran Church. Forty-four children and six teachers attended Sunday school that day. Total offering was \$2.33. By May 15<sup>th</sup> there were thirty-nine adults willing to be members of a new congregation. Synod rules, however, required a membership of at least 50 members to be a mission church. Consequently, the charter member rolls were kept open until the number had increased to 51, in July, 1930.

The total cost for the barrack and the necessary sidewalks was just a little over \$7,000. This was covered by a 6% loan for \$2,500 from the Board of American Missions, United Lutheran Church, plus a loan from the Synod Loan Fund of an additional \$3,000. Both became interest-free loans for these were very difficult financial times. Records state that the St. Paul's Women's Organization called Ladies Aid partially took over church indebtedness at this time. All members of the congregation, young and old, made special efforts to deal with the debt.

Ladies Aid first focused on kitchen wares and facilities. In July 1930, Mrs. Clara Klann was appointed to oversee acquiring a gas stove. The stove was purchased in August at a cost of \$70.23 and placed in the northeast portion of the barracks, alongside the sink. In January 1931, cooking utensils and dish towels were purchased. A gas plate for heating water was donated and a hot water tank was purchased. Yards of sewing material were purchased to make aprons, holders and tablecloths. Luther League donated dishes.

Throughout the early years, Ladies Aid held suppers, bazaars, and ice cream, pie, and box socials to raise money. They also sold packages of Jell-O, soap dishes, and metal sponges; and made "Goodie Baskets" and other baked goods for sale. From the proceeds in 1931, Ladies Aid raised twenty-five dollars for the church. The following

year, at Reverend Romeis' suggestion, the Ladies Aid agreed to pay ten percent or \$250 of the \$2,500 church's amortization.



*The first St. Paul's Church building at 1920 Garden Place*

## **St. Paul's Charter Members**

(Some name spellings were corrected from the original document)

As documented by The Synodical Board of Home Missions and Church Extension of the Illinois Synod of the United Lutheran Church in America.

### **Charter Membership in the Glenwood Heights English Evangelical Lutheran Church on May 15, 1930.**

Harvey F Stearnes  
Mrs. Lena Stearnes  
Forrest F Stearnes  
Otto C Andersen  
Emma Andersen  
Marion Andersen  
Eugene Andersen  
Mrs. L Rowe  
Lucille Klann  
Elgath Hunter  
MW Hunter  
HW Johnson  
Mrs. Albertena Johnson

U Larsen and daughter  
Miss E Bissar  
M Larsen  
Mrs. Ray I Harlow  
Miss Leona Harlow  
Carrie M Stouse  
John B Harstad  
Mrs. John Harstad  
Miss Esther Larsen  
Mrs. EJ Edwards  
George J Ellingson  
Mrs. George Ellingson  
Henry Riechmann

Florence H Johnson  
Elissa M Johnson  
Mary Grace Hough  
Frank Klann  
Harriet Klann  
C Hoigaard  
James T Otteson  
Mrs. Nick Larsen and daughter  
AD Nelson  
Mr. EC Koenig  
Mr. Nels Hoigaard  
Mr. Andrew Otteson

Agnes Riechmann  
Miss Ellie Mohn  
William Mohn  
Mrs. Maurice C Johnson  
Rufus Rasmussen  
Oscar Anderson  
Mrs. James T Otteson  
Nick Larsen  
Mrs. AD Nelson  
Mrs. EC Koenig  
Mrs. Anna Hoigaard  
Mrs. Verna Otteson

The following year, 1931, Mr. and Mrs. August Voight, Kristine Hjelmeland, Trond Malheim, Reverend Romeis, and our first two confirmands, Uno Toika and Emily Klann, became members of St. Paul's.

## **Dedication of a Mission Church**

Dedication of St. Paul's English Evangelical Lutheran Church of Waukegan occurred on Sunday, May 18<sup>th</sup> in the prefabricated building located on the northwest corner of Lewis Avenue and Garden Place. Three dedication services were held. Reverend Paul J. Gerberding, Field Missionary and Acting Pastor, presided over the 11:00 a.m. service. Reverend J. F. Seibert, D. D., English Secretary of the Board of American Missions, gave the dedicatory sermon.

Rev. E. P. Scharf, Secretary of the Synodical Board, presided over the afternoon fellowship service held, at 3:30 p.m. Rev. P. J. Gerberding and Rev. E. L. Spaid shared greetings and announcements, and Rev. Paul E. Bishop, President of Conference, addressed the congregation. A beautiful singer, Edith Keller, wife of Dr. S. L. Keller, was the soloist at the service and accompanied by the congregation's first organist, Miss Luella Klann (Rowe). Edith Keller was blessed with a soprano voice of unusually fine quality having studied many years under one of Chicago's best voice instructors. In addition to singing in concerts, churches and other places in Chicago, she gave freely of her talents in numerous churches and other locations in Waukegan.

Reverend Luther Hogshead D. D. presided over the 7:30 Evening Community Service. Reverend J. M. Bramkamp, D. D.,

President of the Illinois Synod gave the sermon and Mr. L. J. Yager, Mayor of Waukegan, delivered the greetings. Edith Keller was the soloist.

A meeting was held at the church following the first service to elect six councilmen. Mr. Frank Klann was elected as St. Paul's first vice president and served in that capacity for four years. The second was to order 100 sets of offering. They were already deeply in debt due to the cost of the property and building expenses amounting to \$7,000.

The first annual congregational meeting was held on January 13, 1931. At that meeting, Frank Klann's daughter, Luella Klann (Rowe), was elected our first organist and served faithfully in that capacity for eighteen years. Miss Shabacken was elected as our first choir leader.



*First Vice-President Frank Klann and His Daughter Luella*

## **Frank Klann**

One of the 51 charter members of St. Paul's Lutheran Church, Frank Klann, came to St. Paul's by transfer from Grace Lutheran Church in Woodstock, Illinois. He was elected to the church council on May 18, 1930 and served as its first vice-president until January 1934.

Frank was born in Crystal Lake, Illinois on October 7, 1886 to Fred and Amelia Klann and married Clara Ann Koepsell on July 18, 1907, in Saukville, Wisconsin. They had four daughters: Luella, Harriet, Lillian, and Emily. They moved to Waukegan in 1924. Frank was a retired drill press foreman of American Can Company. Frank died on October 30, 1970 at the age of 84. He was survived by two daughters, Mrs. Trond (Lillian) Malheim and Mrs. Elwood (Emily) Nehrbass, and ten grandchildren and 24 great-grandchildren. He was preceded in death by his wife Clara Klann in November 1959 and two daughters, Mrs. Harold (Luella) Rowe in 1960 and Mrs. Stanley (Harriet) Messer in 1967. Marilyn Kutzler is the granddaughter of Frank and Clara Klann and daughter of Luella Klann.

### **“Always Faithful”**

Miss Emily Klann, one of the Club’s Charter members, presented to Adeste Fidelis a story recounting the history of the club.

“The Adeste Fidelis was organized in October 1930 with seven girls in attendance. At the present writing in May, 1942 there are thirty-seven girls on the roll, twenty-seven of which are very active.

But let’s imagine ourselves back in 1930 pretending to be one of those first seven girls. We are seated in our Sunday school class; Miss Florence Johnson is our teacher. We are listening very intently to the lesson when the bell rings. We all jump up as we usually do but Miss Johnson calls us back. We all look inquiringly at one another when she invites us to her home on the following Friday evening. No one knows why we are invited.

On Friday evening we all entered Miss Johnson’s home just as puzzled as we were on the preceding Sunday. It was on that evening that she suggested forming our Sunday school class into a club. We all thought it was a wonderful idea, but what would we do each club meeting? Miss Johnson said we would meet for social purposes only and any good we might do for the church.

Seeing we had only three months left of 1930, Miss Johnson appointed as our President, Lorraine Mathes, and Leona Otteson as Secretary-Treasurer. We were to elect our regular officers for the year at our December meeting.

Then came the problem of deciding on a name. All sorts of names were suggested. But when Miss Johnson suggested Adeste Fidelis that topped them all. We actually laughed right out loud. Why we never heard of anything so funny, we couldn't even pronounce it. Finally, when the laughter died down, Miss Johnson explained to us that Adeste Fidelis was a Latin name meaning 'Always Faithful.' Well after thinking it over we all wanted to be always faithful to our club and to our church, and that would be rather a ritzy name for it. So, seven heads got together and decided that Adeste Fidelis it would be.

The charter was signed and we all looked at it with a proud feeling. The names read, Lorraine Mathes, Leona Otteson, Emily Klann, Helen Hoigaard, Elsie Olsen, Dorothy Sorenson, and June Rapp.

December came and with it election of officers for 1931, our first regular officers: Lorraine Mathes was elected President, Emily Klann, Vice-President, and Leona Otteson, Secretary-Treasurer. After election of officers we packed a box of goodies to be sent to Nachusa Orphanage. Our first social event for the congregation was a Rainbow Social which was very successful both financially and otherwise.

In October 1933 Miss Florence Johnson resigned as sponsor. Her work took her to Elgin, Ill. and she obtained a transfer from our church to a Lutheran church in Elgin.

Our club was growing very fast and we were doing more and more for the Sunday school and church and had fewer social activities. With fewer social doings we were rather pressed for money. Mrs. Romeis suggested having a cookie sale. We were to take orders for cookies from anyone who might buy. Each girl was responsible for ten dozen cookies. Our cookies were usually delivered on Saturday and the previous evening the girls would go to the church and bake cookies until wee hours of the morning. We usually averaged around twenty-five dollars profit which helped the treasure considerably. This became an annual event until Uncle Sam decided he needed the sugar for his soldiers and sailors more than Adeste Fidelis girls needed it for their cookie sale.

At Christmas time Mrs. Romeis suggested to invite our mothers to a Christmas party to be held in the church. Each girl was to make her mother some gift. Not buy, but make it, the cost was not to exceed fifty



cents. Our Mother and Daughter Party at Christmas is still an annual event.

Mrs. Romeis thought we ought to have some definite project to do instead of just helping here and there. All of the girls liked little children, so we sort of adopted the primary group of our Sunday school. By that I mean, we purchased kindergarten tables and little red chairs for the smaller classes. We also take care of all the primary supplies, which include papers, crayons, scissors, chairs, etc. This proved very worthwhile and we all enjoyed doing it.

After taking on the primary department we didn't have a great deal of money left for the church. However, we managed to buy the bulletins for the special Sundays, such as Easter, Palm Sunday, Christmas, etc. We gave the church a donation whenever we felt we could spare the money.

It seems like everything happens to us in October. We organized in October, Miss Florence Johnson left us in October, and in October, 1936 Mrs. Romeis left us. Rev. Romeis had accepted a call to a church in California and naturally he took our sponsor with him.

Well we're stranded again. The membership is increasing every meeting and no mother to guide us. We asked a few of the women of the church to be our sponsor but none of them wanted us to be their charges. I don't know maybe we looked like a mischievous group but we were really very innocent. Hmm, I wonder. Mrs. August Larsen took care of us for a while but she was not a member of our church and she soon left her children stranded. Then one day a Mr. and Mrs. Corliss Johnson joined our church. Mrs. Johnson looked like a motherly person and she was also quite young. We were out canvassing for a sponsor so we all had our eye on her. Now when a new member joins your church you just can't walk right up to her and say, "Mrs. Johnson, I'm glad you joined our church and are one of us. Now will you be sponsor of our club?" Well, things just aren't done that way.

We were still struggling along without a sponsor to guide us and were also rehearsing for two one act plays to be given. Now we hear from sources unknown that Mrs. Johnson did quite well in directing plays. Well, this was the chance we had been waiting for. On November 4, 1938 Mrs. Johnson was asked to visit our meeting and also to direct

our plays. I don't think she knew the underlying reason for asking her, but maybe she did.

The plays went over very nicely and maybe she was proud of us that night, for she became our sponsor on January 6, 1939. After those first two plays, it became an annual event with Mrs. Johnson as our director. Mrs. Johnson took a very deep interest in us and wanted to learn more of the club and asked to read our constitution. We shamefully had to admit we had none. So a group of girls were selected and with the help of Mrs. Johnson a new constitution was written and read at our December meeting in 1939.

We had been closing our meeting with the Lord's Prayer and it was suggested that we have a prayer of our very own. Caroline Lettman was our Chaplin at that time so she was appointed to write a prayer for our club. Mrs. Johnson assisted her in writing the prayer. In October 1940 (there's our October again) the prayer was presented to the girls and we have used it ever since.

Mrs. Johnson promoted the idea of sponsoring a primary choir that is the real little tots, ages from five to nine.

We have come a long way since those first seven girls started. Each and every girl had her own part to play in the twelve years the club has been in existence and everyone has played her part well. One can see that in the steady increase in membership and the obligations we have assumed in the place of our social activities.

The Adeste Fidelis owes credit to Miss Florence Johnson who organized the club, Mrs. Romeis who gave us many new and useful suggestions, and to our present sponsor Mrs. Corliss Johnson who has been a real mother to all of us.

Besides our annual Mother and Daughter Party and our annual play we are still buying all the supplies for the primary department and sponsoring a primary choir. We are also taking a study course entitled 'The Young Christians in Public.' Rev. Voorhees suggested our taking this study course for young people which was recommended by the United Lutheran Church.

So from seven members we have increased to thirty-seven members. Let's keep plugging girls and see if we can make it forty-seven next

year. The church needs the help of the Adeste Fidelis girls to build that new church on the corner.

The girls of the Adeste Fidelis are known to keep promises that are made. So when I say we promise complete co-operation to our new pastor, Rev. Weeg, to his wife, Mrs. Weeg, they know they can call upon us at any time and no task will be left undone."

Adeste Fidelis' ending prayer: "Grant to us, O Lord, we beseech Thee, the Spirit to think, say and do all things right. Further us with Thy continual help, that in all our works, we may glorify Thy Holy Name. May we always be faithful, and finally by Thy Mercy, obtain everlasting life through Jesus Christ, Thy Son, Our Lord. Amen."

### **Adeste Fidelis as told by Margaret Sneesby:**

"It was a girl's club. They would have a cookie sale. We made dozens of cookies. We took orders ahead of time so we knew how many to make. That went over so big. Everyone loved those coconut cookies. We did all of that by hand. No electric mixers. They started right after school was out, and sometimes didn't get out until after midnight, just baking cookies. One oven. The oven was located in the back corner. They put in a sink. There were some windows there and some open space, so you could work in the corner. It was mind boggling for today. It was fun time for us kids. We had a gay time. Of course, we had to deliver those cookies. It was usually Friday we would go baking."

# Romeis Era

**Reverend H. Paul Romeis**  
(June 21, 1931 – Oct 31, 1936)



Born in Elgin, Illinois on December 22, 1905, the Reverend H. Paul Romeis graduated from Chicago Lutheran Theological seminary in 1931 after having first received his B. A. degree from Carthage College. At age 24, he was assigned to St. Paul's English Evangelical Church in Waukegan, Illinois on May 1, 1931, his first regular pastorate. He was installed by Reverend Gerberding on June 21, 1931. The church seal, (which was purchased by the council at a cost of \$3.50), and the church record book were handed over to Reverend Romeis. Two years later, on August 10, 1933, he married Rosemary Shickle, a hometown girl from Elgin.

Starting salary was set at \$2,000 a year, but due to the financial effects of the Great Depression, it was reduced to \$1,200. Still, the congregation could only pay \$500, so the LCA Board of Missions covered the remainder. Church council met on the first Tuesday of every month at councilmen's homes. According to council's minutes, their meetings focused primarily on financial matters. The original indebtedness, incurred by the purchase of the property and building, together with added mortgage assessments, was paid through special

funds. Early organizations such as Ladies Aid, Men's Brotherhood, Luther League, and Adeste Fidelis all contributed to the financial welfare of the church.

Sunday school was a very prominent function of St. Paul's. Under the leadership of Reverend Mr. Romeis, church membership had doubled from 83 to 163, and Sunday school had grown until it taxed the capacity of the building. To accommodate the increased attendance, alterations to the church building were made in 1935. The center partition was converted into folding doors so that the entire building could be made into an auditorium during the worship hour.

Not only had Reverend Romeis and Mrs. Romeis been interested in developing activities at St. Paul's, but they also took part in local civic and social organizations. Pastor Romeis served on the board of the Waukegan Kiwanis club. He was pastor advisor to the Fox Valley district Luther League of Illinois. Mrs. Romeis was active in the Young Woman's League and often sang at church and social affairs.

Reverend Romeis was called to California and later became an assistant to a synod president there. On Sunday, October 15, 1936 at 11 o'clock, he preached his farewell sermon at St. Paul's. The next Thursday evening, the Ladies Aid threw a farewell party given in the couple's honor. Reverend Romeis died in Pasadena California on January 2, 1976 at the age of 71.




## **Luther League Play in 1932**

The Luther League of St. Paul's Lutheran Church presented their first play, "An Early Bird," on April 5, 1932 at the Majestic Theatre in Waukegan. The performance starred six members from our church. The Majestic Theatre was located at County Street and Water Street. St. Paul's set its policy not to charge for admission, but to accept a free-will offering. Cast members were Carl Mathes, Ella Nelson, Trond Malheim, Harold Johnson, James Otteson, and Annette English.

### A No Buff WAX

Apply sparingly  
with Mop on  
Asphalt, Tile, Com-  
position, Hardwood  
Floors, Linoleum,  
Rubber, Etc.

You do not  
Have to rub  
or Polish  
Gives a hard  
wearing finish  
Dries Rock Hard  
with Lustre

Cuts Cost Mainte-  
nance and Time  
in Half

For Sale by the  
following dealers

FRANK BURKE HARDWARE CO.	Waukegan, Ill.
GLOBE DEPARTMENT STORE	Waukegan, Ill.
HUGH KELLY HARDWARE CO.	Waukegan, Ill.
TENTH STREET HARDWARE CO.	Waukegan, Ill.
F. A. SERKOWSKI	North Chicago, Ill.
S. A. ZICKERMAN	North Chicago, Ill.

*Lena Larson*

## "An Early Bird"

By  
*Walter Ben Hare*  
*Lydia*

Presented by  
*Paul Romeis*  
*Anna and Mrs. J. J. J. J.*  
*Annelle & family*  
*John & Della*

LUTHER LEAGUE  
ST. PAUL'S LUTHERAN CHURCH

Tuesday Evening, April 5, 1932

at the  
Majestic Theatre

"A little boy, he called me little boy!"

## Confirmation Classes

In 1931, Emily Klann (Nehrbass) and Uno Toika were St. Paul's first confirmation class members. Six class members in 1935, including Marjorie Fredholm (Jereb), are shown below.



First Row: June Thomsen, Shirley Johnson, and Pastor H. Paul Romeis  
Second Row: Marjorie Fredholm (Jereb), Dorothy Salzman, Robert Thomsen, and Ruth Littner

## Penny Suppers

The following is from an interview taken with Margaret Sneesby on February 25, 2016, on the topic of Penny Suppers which were held in the early years at St. Paul's:

"Open to the public which was advertised in the newspaper. It was opened to the whole community. Everyone under the sun came to penny suppers. Say you wanted meat, potato, etc. So you paid a penny per helping. Of course, all the food was donated. The suppers went over big. They depended on the women's organization to keep the church going financially. The men weren't too active. It brought the community together. It drew together the members of the church; you got to know them better. A closer-knit family in those days, it was hard times, but good times."



*Picture taken of Margaret Sneesby in the 1930's*

The first penny supper at St. Paul's was held on December 10, 1935. Ladies Aid raised \$22.26 from the supper, \$1.07 from a free will offering at the door, and \$1.98 in popcorn and candy sales, bringing the total earned to \$25.31. The church held numerous penny suppers throughout the coming years. All proceeds went to the building fund. In the 1930's, residents in the Waukegan area knew of St. Paul's Penny Suppers and many came every week to share a cheap, hearty meal.

## Reverend Romeis' Letter

The following is a copy of a letter Reverend Romeis sent to the congregation on January 8, 1935 which summarizes the events of the past year, 1934:

“Dear Members in Christ:

As each organization is to give its own report, I will report only on the work as a whole.

We give most hearty and humble thanks to Almighty God, our Father, for His care and guidance and His many blessing during the past year, both to us as a Church and as individuals. We are indebted and very grateful for the continued support of the General Church body, the Board of American Missions, and the Illinois Synod; and last but not least we are thankful for the work done by the various organizations within the Church who have labored earnestly for our support in their various fields; and to every member and friend of St. Paul's, whose efforts and gifts have made possible our success of the past year.

We thank the Church Council for the faithful discharge of their duties; giving their time and their energy to administer the affairs of the Church in so fine a manner and spirit. Especially do we thank the two members whose terms are finished with the coming of this year, Mr. E. E. Koenig and Mr. O. Johnson, for three years of faithful service in the interests of the Church.

We thank the Sunday School teachers and officers who have been on the job Sunday after Sunday teaching the children of the Church the Christian way of life. We thank the Luther League for their financial aid and for their efforts in supplying Christmas baskets to some hard-pressed families.

We thank the Adeste Fidelis Class for making possible the kindergarten department of our Sunday School, for the bulletins on special occasions, and for their faithful appearance each Sunday as a chorus to lead the congregational singing. We thank the Young Men's Club for the fine way they have handled the cleaning of the Church every week; the money they have received for this work has almost entirely been returned to the Church Treasury.



We thank our organists and pianists both in Church and Sunday School, for their faithful service in thus beautifying our worship. We thank the group of men who put over so successfully a supper last spring; and the various men and young men who have made repairs on the Church property, built fires, cared for the lawns, and done the many odd jobs that needed to be done.

And to each one of you, members and friends, thanks for your help and cooperation in every way; and for the generous spirit in which you have given it. God's work cannot be done by one man, or any group of men or women; but it takes the wholehearted cooperation of every one of us, working together as one for the purpose of making Christ's saving Gospel known to all men, and bringing these to Christ.

Now for the report on the State of the church: During 1934, we have received 27 new members, 6 by confirmation, 7 by transfer, and 14 by renewal and confession of faith; our losses have been none, though we must remember that some of our members, not having severed their connection with the Church, have moved away, but we expect them to return to our city and church when it is possible for them to do so.

6 Children have been baptized; making our baptized membership 264, our confirmed membership 133, and our communing membership 70. 71 Sermons have been preached, with an average attendance for the year of 52. 13 Catechumens have been taught. We have reason to rejoice and to thank God for the progress we have made this year, even though hard-pressed many times.

Just a brief comment on our financial condition. We have assumed \$715 of the pastor's salary, an increase of \$75 over last year; the Board of American Missions paying the balance. We have unpaid special assessments, including those received this last week of \$809.99; this is our one great problem and the thing that will take our most earnest effort this coming year. These must be paid, and with God's help and your most earnest cooperation, they will be paid. The Illinois Synod has promised not to press us for our interest on a note of \$2,900; we have assurance that the Board of American Missions will review our \$2,500 note this year without interest, leaving the field clear to tackle this one debt and wipe it out.

This year you have paid the pastor's salary in full, including all back

salary; we've paid cash for all our Sunday School materials and also have reduced our debt to the United Lutheran Publication House. There remains this one thing to do and we will do it.

We look for a most successful year for 1935, and ask your most fervent prayers and your most hearty cooperation, putting Christ and His Church first in all things, so press onward to do the work that God has set for us to do; realizing to the full that without Him we can do nothing, but with Him all things are possible.

Respectfully Submitted,  
H. P. Romeis, Pastor"

## Voorhees Era

**Reverend Edward A. Voorhees**  
(December 1, 1936 - April 12, 1942)



On December 1, 1936, the Rev. Edward A. Voorhees assumed the pastorate. He came to St. Paul's after having served at Reformation Church of Chicago for six years. He was accompanied by his wife,

Bernadine, and their three children. There were 200 members present at his installation on February 28, 1937. The offering was \$23.46.

Odney Reckling wrote: "The Voorhees had a real love for the youth of the church, and their home on Waverly Place had an open door policy welcoming them to their home. A review of his accomplishments at St. Paul's proved to be very uplifting. There was not only the physical improvement that is to be expected, but the spiritual development of the members were also enriched."

As the congregation grew in number, the entrance of the church was changed from the front to the west-side of the building. On January 5, 1939, excavation of the basement began. Mr. James "Jens" Otteson headed the project. Men young and old volunteered their services to dig out the basement by hand. This finally enabled the church to get rid of the black pot-belly stove they had previously used to keep warm. The girls were glad to see it go, because there was always the danger of losing a shoe to that fiery inferno, courtesy of young male pranksters!

By 1938, the organ was about played out. In August, 1939, St. Paul's had the opportunity to secure an Estey Electric Organ from Trinity Lutheran Church for \$155. Many thanks went to the men who installed the Estey organ on Saturday, Sept. 2<sup>nd</sup>. Thanks also went to all who helped financially. The congregation was pleased to see the new carpet laid on the chancel, step, and a portion of the floor on Sunday morning, December 10, 1940. The carpet and full payment of the Estey organ was made possible through donations. Mr. Fred Hjelmeland and Mr. Anfin Malheim gave an additional gift, a beautiful organ lamp.

On the evening of October 29, 1939, St. Paul's dedicated its splendid new Estey organ at a special service of music and worship. Luella Klann Rowe and Margaret Berg Sneesby played "The Lost Chord" by Sullivan as a piano and organ duet. It was said, "They played with a majestic tone and fine interpretation."



*Luella Klann Rowe at the Estey organ*

Ladies Aid continued to assume the amortization of a first mortgage obligation on the properties while Adeste Fidelis club donated special bulletins throughout the year. A boy's club was active in developing Christian character among themselves and others, and assumed certain obligations, promoted entertainment, and had a basketball team.

The Young People's Luther League met for devotionals each Sunday evening at 7 o'clock and faithfully attended district rallies. Reports of the church council show that the Lenten-Easter season of 1936 was the best in the history of the congregation

Pastor Voorhees submitted his resignation to St. Paul's councilmen on March 16, 1942. While a reason wasn't given for his resignation, it was believed to be due to poor health. At a congregational meeting held on April 12, 1942, the church accepted Reverend Voorhees resignation by a vote 35 in favor and 24 opposed.

On February 8, 1989, Reverend Voorhees died at the age of 93 in Las Cruces, New Mexico and buried in Leesburg, Florida.

## The Story of Pence Cans

At the very outset, the small congregation faced many financial hardships. The church was deeply in debt during the Great Depression, having to support a pastor, pay bills, and bear the cost of a staggering mortgage. Both pastors Romeis and Voorhees, in their own way, listened, prayed, and managed to tend to the needs of their flock.

One example of ingenuity to meet their financial needs was the institution of Pence Cans. The pence system was adopted by the church council on February 4, 1937 for the promotion of the Property Improvement Fund. The Pence Can or Penny-A-Meal system was being used successfully in many churches at that time. After some discussion council members decided to shop around to see if cans could be obtained free or at a nominal cost at a gasoline dealers' station. At that time several of the councilmen reached into their pockets and contributed 75 cents towards the purchase of pence cans.

Written in the April 1937 article of The Lutheran Advocate:

"A partial distribution of our new Pence cans was made after the Easter Morning service. It was impossible to contact all those who may want to use them. You can get your can anytime that you are at the church building, or cans will be delivered upon request. These are to assist in our Building and Remodeling Program. Take one home if you are willing (one to a family). Place it always on the table where you eat. One (or take turns) says grace by using one of the printed prayers on the can. Then a penny a piece is dropped by each member, or at least by the income producing members (includes wife). The plan will not work unless we all make up our minds to use it diligently and regularly. Return the cans the last Sunday in April, at the Church service. Mr. John Littner is Pence Chairman and with a Committee of Councilmen will keep a full and accurate account of the Funds. If we will all use the cans faithfully, we will feel mighty good about them at the end of the first month."

Fifty-one cans were given out to members of the congregation. The committee published a report the following month:

"We appreciate your Pence Can offerings. A strict account will be kept of all moneys turned in. All of it goes for the remodeling project. If you are willing, always take a new can on the day that you turn in the used

can, and please give us your name, so that we may have a record. Please give us your name, even if you do not desire to put your name on the can. Otherwise we do not know where the cans are. Only about one-third of the cans were turned in on the first collection of April 25, with totals of about \$25. You can, of course place the can on the offering plate or have it placed on the altar otherwise, but it would be better if all of us do the best we can to make the general collection on the last Sunday of each month."

Members contributed to the pence cans up to 1940, but after the first year, receipts waned considerably. Margaret Sneesby said, "The cans were like today's pop cans. You just put your spare change, pennies, into it. In about every six months they called them back in. I don't suppose they got an awful lot of money. It was a way of giving. If you earned a little extra money, you put some into the can. Those were insignificant ways of doing things."

## **Relocation of Altar and Entrance of Old Church**

At times, the church required major structural modifications to the church. To provide more room for Sunday school students, one idea was shared on January 21, 1937 to move the entire building to face Lewis Avenue. Mr. Aaron Thomsen agreed at that time to dig out the basement at no expense, and \$200 in donations by the councilmen and Reverend Voorhees would cover additional expenses.

However, to avoid moving the church to increase seating capacity, at the congregational meeting on January 11, 1938 Reverend Voorhees suggested simply relocating the altar to the north side of the church. After a lengthy discussion, a majority of members were very much in favor of the change. At that time, they also decided to build a side entrance facing Lewis Avenue, and a walk to lead up to the street. The address was changed to 900 N. Lewis Avenue. The expense was to be drawn from the building and Improvement fund. Several members were willing to donate money and labor once the renovation began.

## Excavation of Basement of Old Church

As early as March 7, 1933, church council discussed digging a basement under the church to provide more room for an expanding congregation. But due to lack of funds, they put the decision on hold.

It wasn't until January 5, 1939 that the excavation began. Mr. Jens Otteson headed the project. Men and boys who volunteered their services were called the "Bucket Brigade." In October 1939, the church council voted to apply for a loan of \$1,500 from the Board of American Missions, \$1,000 would be used for the further completion and improvement of the basement and building.

Council members were hoping and praying that with the help of the Bucket Brigade, the basement would be completed for St. Paul's 10<sup>th</sup> anniversary on May 12, 1940. Dr. Knudsen of the United Lutheran Church Mission Board was the guest speaker for the 3:30 p.m. special anniversary service. Happily, the basement was adequately finished for the social and refreshment hours.

At the congregational meeting on October 17, 1941, St. Paul's launched a campaign to raise \$1,500 to complete the building and property project. This money provided for the excavation and completion of an additional heating and coal storage room at the northeast corner of the structure, and also a heating plant, stairway, plumbing fixtures, and interior finishing of the basement walls. In 1942, a furnace was installed in the new basement. Up until that time, the church heating came from a little pot-belly stove. An altar and lectern built earlier in October 1937 by Jens Otteson, Peter Sneesby, and Trond Malheim was placed in the basement which served as the "Children's Chapel." When the new church was built, the altar and lectern were moved to Fellowship Hall.

# Weeg Era

**Pastor A. (Albert) Howard Weeg**  
(May 24 1942 - September 15, 1943)



The Rev. Weeg was born in Chicago on December 2, 1916, the son of Albert and Sarah Caitlin Weeg. He was educated at Carl Schurz High School in Chicago, the University of Illinois, Northwestern University, and Elmhurst College. He received his A.B. degree from Elmhurst in 1939. On July 27, 1940, Mr. Weeg married Miss Helen Marion Gustafson. He graduated from Lutheran Theological Seminary in Philadelphia on May 13, 1942 and was ordained into the ministry on May 20 in St. Louis, Missouri by Dr. Armin G. Weng of Chicago, president of the synod.

On May 24, 1942, immediately following his graduation from the Philadelphia seminary, Revered A. Howard Weeg came with his wife, Helen, to St. Paul's and served here for only sixteen months.

During his ministry at St. Paul's, notable advances to the church were made which included an enlarging of the facilities for worship. On May 16, 1943, the expansion of the nave of the church was completed and a Children's Chapel was dedicated in the recently excavated basement. The financial program of the church grew, and



the benevolent giving of the congregation increased 100 per cent. A financial drive enabled the congregation to be debt free within the next few years. This made a building program possible that would take the congregation out of the small church in which it had been worshipping. With Reverend Weeg's guidance St. Paul's annual reports first appeared at the 1942 annual congregational meeting.

The congregation approved the resignation of Pastor Weeg on Aug 15, 1943, to become effective on September 15. He had accepted the pastorate of the Edgebrook Evangelical Lutheran Church in Chicago. Later, he served and represented Lutheran organizations and churches in Illinois, Ohio, Pennsylvania, Virginia, Texas, Louisiana, Minnesota, New York and California. He was awarded an honorary doctorate of divinity from Carthage College in 1958.

He was a delegate for the Lutheran Church in America at the Lutheran World Federation Meeting in Helsinki, Finland, in 1963. In the Evangelical Lutheran Church in America, he served on the Bishop's Advisory Committee, Synod Disciplinary Committee and was a member of Lutheran Episcopal Dialogue. In the United Lutheran Church in America, he served on the Commission of Lutheran Unity and was President of the Illinois Synod of the ULCA from November 1956 to August 1962. After his retirement in 1979, he held interim pastorates in California, Indiana and Kentucky.

The Rev. A Howard Weeg, 85, of Columbus, Indiana, died on July 1, 2002. Inurnment was held at Edgebrook Lutheran Church Memorial Gardens in Chicago.

## **Baptismal Font**

The Adeste Fidelis presented a play at church on March 5, 1943 called "His Woman Folks" directed by Mrs. Corliss Johnson.

## CHARACTERS

Mrs. Martha Lewis, his grandmother    Emily Klann  
Mrs. Lucinda Breckenridge, his mother    Mildred Terry  
Miss Jane Lewis, his aunt    Elaine Miller  
Miss Edith Breckenridge, his sister    Ruth Hjelmeland  
Miss Polly Breckenridge, his sister    Elsie Ziilisch  
Mrs. William Breckenridge (Francette),  
his second wife    Dorothy Whitted  
Mammy, his cook    Betty Thomsen  
Patience Trent, his neighbor    Helen Prather

ACT I    The living room of the Breckenridge home.  
A morning in June.

ACT II    The same.    A few hours later.

ACT III    The same.    Later that afternoon.

*Between Act 1 and Act 2 -*

Accordian solo - Miss Bernice Graff  
Vocal duet - Miss Shirley Otteson,  
Miss Fay Ann Lettman

*Between Act 2 and Act 3 -*

Remarks by The Rev. A. Howard Weeg.  
Offering - To be used for the purchase of a baptismal font for the Church.

## PROPERTY COMMITTEE

Marjorie Fredholm, Chairman  
Berdine Smith, Evelyn Hartwig, Bernice Graff  
Delores Sorenson

## STAGE CREW

Lucille Robinson, Chairman, Caroline Lettman, Helen Prather

## USHERETTES

Berdine Smith, Chairman  
Shirley Meyer, Bernice Graff, Mildred Hellquist  
Evelyn Hartwig, Barbara Mouritsen  
Jaunita McLaughlin

## ADESTE FIDELIS OFFICERS

*President - Emily Klann*  
*Vice-President - Elaine Miller*  
*Secretary - Elsie Ziilisch*  
*C. Secretary - Dorothy Whitted*  
*Treasurer - Lucille Robinson*  
*Chaplain - Mildred Terry*  
*Reporter - Betty Thomsen*  
*Program Chairman - Helen Prather*  
*Co-Chairman - Bernice Graff*  
*Sponsor - Mrs. Corliss Johnson*

As advertised:

"The play itself is an unusually fine comedy and from all reports the girls have done a fine job in bringing all that the play presents to the foreground. In these days of unrest and hurry, the girls offer us all a chance to relax, to laugh, and to sit back and enjoy seeing those we know so well cast in the role of characters we will long remember. In keeping with the policy in St. Paul's, there are no tickets being sold; but a free-will offering will be received for a very important addition to our church. The proceeds from the play will be used to purchase a much needed Baptismal font for our chancel. With this gift to the church in mind, the girls have spent many hours in preparation for the play which they hope will so meet with your approval that you will want to give freely. Let us all bring others with us that a goodly number might be present on Friday to play a part in placing a truly beautiful Font in our chancel."

The Baptismal font cost \$50.64. Adeste Fidelis performed at least seven other plays: "A Southern Cinderella" (1936), "Borrowing Trouble" and "On the Air" (1938), "The Pearls of Pearl Ella" (1939), "Jessica's Journey" (1941), "Those Phinney Girls" (1944), and "Say It with Music" (1946).

## Completion of Basement and Enlargement of Nave of Old Church

The excavation and construction of the basement was completed shortly after Easter, 1943, and dedicated on May 16<sup>th</sup> in conjunction with the services commemorating the church's 13<sup>th</sup> anniversary. Reverend Arthur E. Enquist, pastor of Trinity Church, was the guest speaker at the 8 o'clock evening service. The program was held in the newly-completed basement. Also, appearing on the program was a talented vocal trio composed of three Waukegan Township High School (WTHS) seniors, Arlene Jass, Doris Hipple, and Ruth Hjelmeland.



*This picture was taken in the mid to late 1940's, after the basement was constructed.*

The basement represented the largest completed endeavor since the founding of the church in 1930. The church council authorized the immediate payment of the remainder of the basement debt.

At this time, the building committee announced the completion of the enlargement of the church nave. This committee, composed of Peter Hansen, James "Jens" Otteson, and Fred Hjelmeland, directed the work of a local contractor. It was now possible to seat an additional 50 people. The committee also oversaw numerous other improvements already under way.

In a discussion with Margaret Sneesby about those early years at St. Paul's, she said:

"I joined in 1934. My father had just passed away. After that, my mother started into the Women's Aid. I joined that fall. It was a small, close-knit family. And of course, a lot of the men were not working. They had time to putter around the church. They did an awfully lot of work to bring it back, restore it back to order, after it was rebuilt. They had to dig out under the basement when the church membership started to grow. They dug all by hand, under that building. The only access was under the steps going up to the church. They built walls down below, and took wheel barrows back and forth under the steps, and dug out the whole basement by hand. Its mind boggling. It took them years. Of course they needed money to work with. It was hard times. During the winter, they kept themselves warm with the pot-belly stove. The original entrance was on Garden Place. Right inside the door was like a vestibule. And next to it was a big pot-belly stove. And someone in the neighborhood would come and fire it up, and warm it up for services. They also had to maintain it so that water would not freeze. It was tough times, but it was fun times too."

# Simone Era

## Reverend Armond “Albert” Simone

(November 21, 1943 – January 19, 1947)



Pastor Armond “Albert” Simone, born on April 7, 1918, was the son of Mr. and Mrs. John Simone from Cicero, Illinois. A graduate of J. Sterling Morton High School, he earned his college degree at Carthage. He graduated from Maywood Lutheran Seminary in May, 1943, and then did graduate work as a case worker in social service for the Lutheran Home Finding Society in Chicago. On November 21, 1943, the young Italian seminarian came to serve St. Paul’s during the war years. Though he had no house, car, or pleasure comforts, he served with warmth and compassion to both the young and the old.

During his tenure, St. Paul’s advanced its plans for a new church building. Pastor Simone launched an outdoor Easter sunrise service at Powell Park, which became an annual event. By December, 1946, after sixteen years of aid from the Mission Board of Illinois synod, St. Paul’s became self-supporting. Pastor Simone wrote: “Thank God we became a giving church – let’s remain so.”

Pastor Simone announced his resignation from St. Paul's effective as of January 19, 1947. He and his wife, Helen returned to Waukegan during the Thanksgiving week-end in 1981. Pastor and Helen Simone had developed a worship experience featuring two clowns named Joyful and Amen. Joyful and Amen led the 11:00 A.M. service on November 29, 1981. Through mime, these clowns led a worship experience encompassing celebration, proclamation, and participation. Joyful and Amen taught the congregation how to laugh at themselves and to accept life not as a burden or tragedy but as an opportunity to serve Christ by serving others.

## St. Paul's Choir Concert in 1942



*Choir members are 1<sup>st</sup> row (l to r): Mrs. James "Jens" Otteson, Odny Hjelmeland, Mrs. Stanley Messer, Ethel Hansen, Mrs. Peter Hansen; 2<sup>nd</sup> row Lucille Robinson, Mrs. Peter Sneesby, Mrs. Harold Rowe (organist), Jean Hemphill, Ruth Hjelmeland; 3<sup>rd</sup> row Bernard Goerler, Harry Lettman, Claris Eklof, James "Jens" Otteson, Fred Reckling. Bernard Beem served as Choir Director.*

## St. Paul's Events during World War II

Pastors Voorhees, Weeg, and Simone served the congregation during World War II. The United Lutheran Church synod began

making accommodation prior to the United States entering the conflict.

## **Preparation for War**

In an announcement in the July 1941 issue of the Lutheran Advocate:

“Our Lutheran Center for Soldiers and Sailors at 405 South Genesee St. is now formally opened. Two Lutheran pastors are serving full-time there. The Center is open every day. Our folds are asked to step up and see the Center. Either one of the pastors will be glad to see you and to make your acquaintance. If you know service men who will be stationed at Great Lakes or Fort Sheridan please tell them about our Center. The treatment and helpfulness that we can give the men the first few weeks they are in the service is very important.”

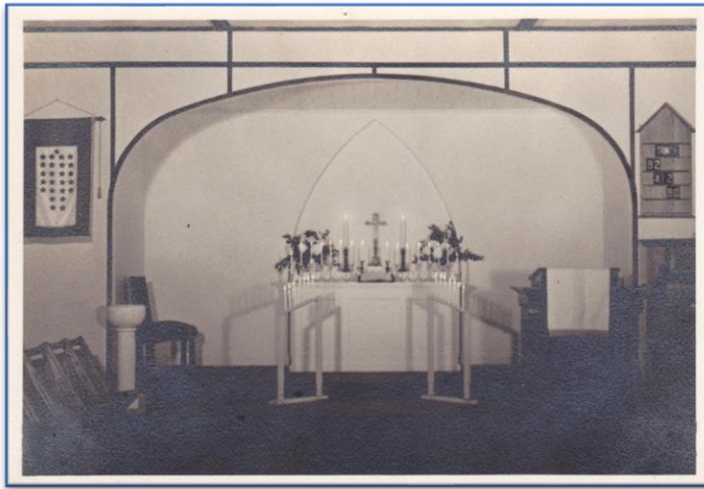
The United Service Organization (U.S.O.) plan called for operation of more than 320 service clubs in areas near but outside of regular army camps, naval bases and defense industries. The centers were to operate as “homes away from home” for the soldiers, with buildings used for religious services. The Advocate went on to state, “Trained staffs will provide spiritual guidance, individual counsel on moral and social problems, and wholesome recreational activities.”

## **The Boys in the Service**

Pastor Simone wrote in the December 1942 issue of the Lutheran Advocate: “A fitting commemoration was placed at the church honoring those boys of St. Paul’s who are now serving in the armed forces of our government. It is only fitting that this be done and done in the finest possible manner. We are proud of these boys and their comrades who have left home to guarantee for us those rights that have made America the land that it is. With the poet we raise our voices in this prayer to Almighty God:

God bless our lads in air, on land, and sea!  
Full well we know how dear they are to Thee.  
Where’re they go, whatever they may dare,  
God ever keep them in Thy gracious care.”

In May, 1944, the chancel was remodeled and furnished with a new altar, pulpit, and lectern built by Jens Otteson. Odny Reckling later wrote: "This early church was warm and beautiful in its simplicity."



*This picture was taken on VJ-day 1945. Note the enlarged nave, new chancel, white porcelain font, and American Service banner*

Ladies Aid donated the American Service banner, which was displayed for the first time on April 11, 1943, and dedicated the next Thursday evening on Holy Thursday at the service of Holy Communion. The banner can be seen hanging on the left side of the chancel. A service banner is a banner that family members of those serving in the United States Armed Forces can display. It features a blue star on white field with a red border for each family member serving in the Armed Forces of the United States. A gold star (with a blue edge) represents a family member that died during service. On this banner are 24 blue stars and one gold star. By the end of the war, there were two gold stars representing two servicemen who were killed in action.

Bernard Goerler enlisted in the navy on December 11, 1942. He met a Waukegan Township High School classmate, Ora Zerba Jr., in Welling, New Zealand. Zerba was a Marine. They attended St. Paul's together.

Lt. Gifford Hemphill, army air force pilot, spent 14 months in a German prison camp when his plane was shot down over Austria.



During the months when her son was being held prisoner, Mrs. Hemphill did her part in the war effort as an inspector in government production at the Johnson Motor plant. She remained at her job until VJ-Day and then returned to private life to await her son's return.

Claris Carl Eklof, 19, former *News-Sun* carrier and St. Paul's choir member was inducted into the army in February 1943. He was the son of Mr. and Mrs. Erik Eklof and a graduate of Waukegan Township High School in the class of 1942. Pvt. Claris Carl Eklof served overseas with a scout squad of the United States Army. During his training at Camp Roberts, CA., he was awarded a medal for superior marksmanship.



*Claris Carl Eklof, 19, inducted into the army. April 1943*

Mr. and Mrs. Ralph Reckling had two sons in the United States Navy. Both young men were graduates of the WTHS. Fred W. Reckling, 20 years old, was storekeeper, third class. He underwent boot training in Farragut, ID, and attended storekeeper's school in Toledo, OH. He was later stationed at the anti-aircraft training center in Cantara, CA. The younger son, Ralph T. (Bud) Reckling, 18, seaman, second class, enlisted on August 23, 1942 and completed boot training at the Great Lakes Naval Training station. Ralph spent most of his service on a Navy patrol torpedo boat in the turbulent water off New Guinea.



*Fred Reckling and Bud Reckling*

Mr. and Mrs. Wray Sheen Sr. had three sons fighting in the navy. Pfc. Lyle Sheen (October 4, 1924 – March 3, 1945) enlisted with the Lake County platoon of Marines that left for service July 30, 1942. He served on the Bougainville Island. He was killed in action on Iwo Jima on March 3, 1945. Ens. Walter “Johnny” Sheen entered the navy as a machinist mate and was stationed at Glenview Naval Air Base until he was commissioned an ensign and assigned to a new aircraft carrier. Wray Sheen seaman, second class, was a radar operator in the navy and saw action in the South Pacific.



*Walter Sheen, Lyle Sheen, and Wray Sheen*

Corporal Royce E. Smith, 20, was in service for two years. He had been overseas since the fall of 1943, serving with the 12<sup>th</sup> armored division, a part of the Seventh Army. According to a telegram from the War Department received by his parents, Mr. and Mrs. Raymond L. Smith, he was killed in action in Germany on March 22, 1944. His brother, Aaron J Smith, Ph.M. second class, joined the navy in October 1942 and served in the Asiatic-Pacific theatre for 19 months. He served on Tinian and Saipan where he became ill and was transferred to a navy hospital in Hawaii. He held the Good Conduct Medal, the Asiatic-Pacific Ribbon, the American Theatre Ribbon, and the Victory Medal.



*Doris Hipple, Royce Smith, and Aaron Smith*

Eugene Anderson, Richard Anderson, Bernard Beem, Frank Hartwig, John Hoem, Anton Kancelja, Carl Mathes, Raymond Miller, Kenneth Shanyfelt, Kenneth Sorenson, Henry Swarat, Robert Thomsen, William Whitton, and Claude Zilisch also served in the Armed Forces.

A letter sent from Claris Eklof to Pastor Simone was printed in the July 2, 1944 church bulletin: (Somewhere in New Guinea, June 12, 1944).

“To My Friends of St. Paul’s

No doubt you folks at “The Little White Church in Heavenly Square: (That’s my pet name for our grand old church) have heard by now that yours truly has been in combat. I’ve done a lot of thinking lately, and I kinda thought maybe you’d like to know how a fellow feels when he ‘walks through the valley of the shadow of death.’ It’s a feeling that

perhaps a great many of you have never really known, therefore in humbleness to God, I'd like to.

Of course, I won't be able to say much due to censorship regulations, but to be truthful, those are the things that a soldier would rather forget anyway. I have one request to make to you, my dear friends, and that is when that glorious day comes when we can take all those little blue stars on the fields of white, and hang them in the sky where they belong, we'll put that twinkle back into them and put them on a field of blue. When that blessed day comes, God's speed. I ask that none of you ask to hear of the horrors of war. In that way, you'll be helping all of us to forget this work of the devil. That's all we returned soldiers ask - please help us to erase from our hearts and our minds these things.

Any man who has been through these evils, who claims that he didn't know the meaning of fear on that first day, is not a speaker of the truth. And because every man learns of this fear, there's never a soldier who, as he lies there in the darkness and silence of the jungle, in his foxhole, fearing that the enemy may be upon him at any moment does not learn to pray. You see, two men sleep in the same foxhole at night, each one staying awake having the night to guard. And believe me, almost every man, as he sets there with his hand on the trigger of his tommy gun, is talking with God almost constantly. A man, no matter how bad he may be, finds that during those lonely nights, there's no one else to turn to but Him. He truly learns through those hardships, to seek the touch of that friendly hand that bestows comfort to his trebling heart. Believe me, friends, I repeated the 23<sup>rd</sup> Psalm hundreds of times and I prayed constantly. Yes, in combat, man learns to know fear and through that fear, God teaches him to seek his help.

Thanks for a chance to tell you folks how a lonely soldier 'down under' feels when he 'Walks Through the Valley of the Shadow of Death.'

Sincerely,  
Clariss (Ekky) Eklof

In the January 6, 1946 bulletin:

“Word has been received that the following have been discharged from the armed services; Claris Eklof, Wray Sheen, John Sheen, Frank Hartwig, and Ora Zerba. We hope that these young men will find a warm and friendly welcome in their church. And later that month word was received from the Navy Department that Mr. Aaron Smith was recently discharged from the service.” Ralph Reckling returned to “Civvies” three months later.

A memorial service for Corp. Royce Smith was held in the church on Thursday, September 30, 1948. His body laid in state beginning at 12:00 P.M and services began at 1:30 p.m. On Memorial Day in 1949, the church honored the two boys from our congregation who gave their lives for our freedom: Royce Smith and Lyle Sheen. Reverend Simone wrote “Let us thank God for their sacrifice.

## **Claris Eklof**

Claris Eklof was the son of Mr. and Mrs. Erik Eklof of Edgewood Rd., Waukegan. He attended West Grade School and graduated from Waukegan Township High School in 1942. He was an active member of St. Paul’s, participating in Luther League, singing in choir, teaching at the Sunday school, and editing Open Door, the church paper. After serving in World War II, he was elected to church council on January 8, 1946. He married Ruth E. Benson on December 31, 1947, graduated from Carthage College in 1950, and received his divinity degree from Chicago Lutheran Seminary, Maywood on May 14, 1953. On May 18, 1953, during the convention of the Illinois Synod of the ULCA, Claris was ordained as a pastor and accepted a call around Dongola, Illinois. He was guest preacher at St. Paul’s 50<sup>th</sup> Anniversary. On November 28, 2010, he died in Princeton, Florida, at age 87.

# Life Back Home

O. P. A. Form No. R-306	UNITED STATES OF AMERICA	Not Valid
Serial No. C 8416632	OFFICE OF PRICE ADMINISTRATION	Before 5-27-42
<b>SUGAR PURCHASE CERTIFICATE</b>		
THIS IS TO CERTIFY THAT:		
Name: <i>W. Charles Lathrop, Charles Lathrop &amp; Wessell M.</i>		
City: <i>Wauchegan</i>	County: <i>Lake</i>	State: <i>Ill</i>
is authorized to accept delivery of <i>Seventy three lbs. (25)</i> pounds of sugar		
pursuant to Rationing Order No. 3 (Sugar Rationing Regulations) of, and at a price not to exceed the maximum price established		
by, the Office of Price Administration.		
Local Rationing Board No. <i>1-1</i>	Date: <i>5-27-42</i>	
County: <i>Lake</i>	By: <i>Crystal Collins</i>	Signature of issuing officer
State: <i>Ill</i>		Title: <i>Chief</i>
This Certificate is not valid unless signed by an issuing officer authorized by the Office of Price Administration		

## Pinch of Priorities

A Poem by Doris Hipple, a senior at WTHS and member of St. Paul's

Published in Sun Spots on April 14, 1943

In this world of rush and hurry, something's worrying me, I fear.  
It isn't money, love, nor clothes, but rationing, my dear.

I have my little book of stamps in rows of red and blue,  
But they can't buy you everything as money used to do.

The sugar shortage hit us hard, farewell to cake and pie.  
The little bit we get each week, how fast it seems to fly!

My sugar stamp marked seventeen for sugar is not used,  
Instead it means that I must buy one of three pairs of shoes.

Our Chevrolet's a sorry sight, it runs upon its rims,  
Nary a tire does it boast, because of Jeffers' whims.

No B or C card do we own, an A card is our pride,  
And with only four gals. a week, we walk instead of ride.

The fatted calf is slain no more for use in private life.  
The butcher's shop is barren now, and rusted is his knife.

Wagging jaws no longer haunt our teachers through the day,  
For when you look for a pack of gum, it seems to have flown away.

Our trusty little book decrees so many points per can.  
So Vict'ry gardens have to grow to meet priority's ban.

My curly locks will curl not more, for lack of pins, you see,  
And jewelry of "essential ware" you'll see no more on me.

When reading o'er the ballad plain no plot I have in mind.  
But should I lose my ration book, domestic tragedy you'll find.

But really, I'm not so worried, I too, will join the scrap.  
And do just all that I can do to beat the Germans and the Jap.

There's bonds to buy and cans to save to help us win this war.  
So I'll just give and give and give and then I'll give some more.

## **Post-World War II**

In January 1946, Pastor Simone wrote:

"Now as we face the year 1946 with the word of our Lord that wherever the need of the suffering his church will be there, the National Lutheran Council is faced with the problem of raising ten million dollars. A great deal of this money will be used for relief work for our brethren in the war-torn countries. Therefore, St. Paul's apportion for year one is \$400.08, or \$800.16 for 1946-47. We hope our brethren will not have to wait for 1947! This will mean about \$7.00 per member for the two years. Do you care to save a life?"

St. Paul's immediate response came from Adeste Fidelis:

"All clothing for Lutheran World Relief should be brought to church before Monday evening. The Adeste Fidelis will pack the clothing Monday, Jan. 28<sup>th</sup>. Permission to send relief to nations considered enemies has been denied by the President according to previous agreements made. Clothing, therefore, will be sent to countries that have been occupied."

Pastor Simone retorted:

"Our enemies must suffer and die of cold, starvation - children must not be helped - they are enemies? Pray God, that eyes and hearts of our officials and people might be opened, might that day never come to us, a defeated, disillusioned, hungry people, denied the necessities of life."

## Resignation of Pastor Simone

At a church council meeting on August 1, 1946, Pastor Simone made a motion for permission to attend Loyola University to obtain further schooling. The motion was not seconded and therefore not carried. Two months later, Pastor Simone announced his resignation from St. Paul's effective at such a time as when a new pastor could be obtained. He gave as his reason, a desire to continue his studies toward the attainment of a Ph.D. degree, and prayed that his departure could be on a basis of friendliness and Christian fellowship. Church council unanimously accepted his resignation, but his resignation still had to be approved by the congregation.

Pastor Simone's letter of resignation, dated October 3, 1946:

"Dear Members of the Church Council:

After prayerful consideration of my future in the service of the Kingdom of God and whereas I have decided to attend graduate school working for my Ph.D. and since this conflicts with pastoral duties, it seems most practical then for this congregation that I resign as pastor, so that a full-time pastor is called.

Having enjoyed the three years of my work here this being my first congregation, and the cooperation of the church council who have helped me in my ministry, I deeply regret that we must come to our parting ways.

As you accept this resignation, rest assured that my very purpose for this resignation is that I may enter the graduate school this fall.

I will of course serve as pastor of this congregation until another full-time pastor is called or until it seems best for the congregation.

A full-time pastor, I believe, as you desire, might be the most beneficial for the growth of this congregation. It is my hope that the congregation will achieve all its ambitions – and it must, for the Church of Jesus Christ must advance, for it is not upon the minds of men that it is built upon.



Would that I may leave with your blessings and your continued friendship - I remain,

Sincerely in Him,  
Pastor Simone"

Pastor Simone's resignation was brought to the congregation for their approval. After considerable discussion, a motion was made and seconded that the action of council to approve his resignation be rejected. This motion was carried by a vote of 31 to 17.

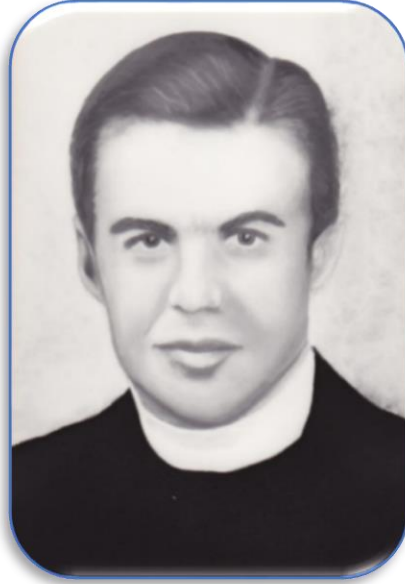
A second and third letter from Pastor Simone conveyed his desire to resign due to illness:

"For me now to tender my resignation is one of those difficult things, but I find it necessary as recommended by my physician, Dr. Samuel Keller (a member of St. Paul's), to resign as pastor. The resignation is to become effective as of January 19, 1947."

At a congregational meeting, Mrs. Gunda Berg (mother of Margaret Sneesby) made a motion that Reverend Simone's resignation be accepted with regret by St. Paul's congregation. The motion was passed without dissent. Pastor Simone preached his farewell sermon at the 11 a.m. service on January 19, 1947. The sermon was appropriately titled "The Pastor's Farewell."

# Gallup Era

**Reverend Wesley H. Gallup**  
(April 1, 1947 – February 1, 1952)



Wesley H. Gallup was born in Kenosha, Wisconsin, on February 2, 1916. He received his bachelor's degree in 1939 from De Paul University in Chicago. While working on his master's degree at Northwestern University, he taught American history at Bradford High School in Kenosha. In 1946, he received his divinity degree at Chicago Lutheran Theological Seminary and went into the ministry at Ascension Church in Pontiac, Michigan. On April 1, 1947, the Reverend Wesley Gallup came to St. Paul's with his wife, Mildred, and their two children, Jacquelyn, 6, and Gary, 3. They resided in the city of Waukegan at 15 North Elmwood.

Pastor Gallup faithfully met the needs of his congregation. During his tenure, attendance and offerings increased so much as to require duplicate Sunday church services. Ladies formed an altar guild and a couple's club began. Church pews and a Hammond organ with chimes were installed. A parsonage and property lots were purchased, and plans were approved for the building of a new church.

Besides serving on several committees in the Church Federation, Pastor Gallup was a member of the Waukegan Salvation Army advisory board. He was also chairman of the music committee of the Illinois Synod of the United Church in America. In 1950, he was appointed by the National Lutheran council to be the contact pastor for the Lutheran personnel at Great Lakes and Fort Sheridan. He served as district Christian higher education chairman of the Lake County and North Cook County United Lutheran churches.

Pastor Gallup's father-in-law was William Seidemann, one of the founders of SNAP-ON TOOLS. The Seidemann's provided much financial support for the purchase of the parsonage and the new church building.

On January 15, 1952 Pastor Gallup told the congregation that he had accepted the pastorate of Epiphany Evangelical Lutheran Church in Milwaukee. He served there for 18 years, and then became senior pastor at Unity Evangelical Lutheran Church for eight years, retiring in the mid-70's. His wife Mildred said, "He was very faithful to his work. It was seven days a week, his whole lifetime while he was in the ministry." Pastor Gallup and his wife owned one of the most extensive 18<sup>th</sup> century porcelain collections in Wisconsin.

Reverend Gallup died of a heart attack at his home in Whitefish Bay on August 16, 1990. He was 74 years old.

## **Interior of Old Church in 1947**

Pews, given to St. Paul's by Trinity Lutheran Church of Kenosha, were installed on May 23, 1947 by members of the congregation.



In 1948 the church began to flourish, both in attendances and offerings. Over Pastor Gallup's five years, St. Paul's communing (active) adult membership rose from 109 to 357. The average Sunday morning worship service attendance doubled from 94 to 200. To handle the increase, an early worship hour was added on February 3, 1949. The new 9:30 a.m. service was the same as the 11:00 a.m. service with the exception of a soloist in place of a choir. Giving to the local church and benevolences also increased 200 per cent during this period.

Of note, Alan Malheim became the first acolyte during the June 29, 1947 church service. An alter guild, which prepares the chancel for every service, was organized by Mrs. George Kopstain in August, 1947, and a Couples Club of St. Paul's held its first meeting on November 2, 1947.

## **Hammond Organ and Chimes**

At a special congregational meeting on October 12, 1947, 57 members voted unanimously to purchase a used electric Hammond organ for \$2,210.34. The church paid cash for the organ by borrowing money from the building fund, which would be reimbursed on or before October 16, 1948 through individual donations, sale of the old organ, and special Christmas and Easter drives. The organ was heard for the first time at St. Paul's on October 19<sup>th</sup> at the 11 a.m. worship service. Mrs. Harold Rowe, the organist, played "Meditation" by Morrison, "Reverie" by Schumann and "Postlude in C" by Lemmens. The choir sang under the direction of George Perl and the soloist of the morning was Marjorie Fredholm. Dedication of the organ was held on November 2<sup>nd</sup>. Pastor Gallup thought the organ would be used in the new church for at least the next ten to 15 years (It actually served us for 32 years). At the January 11, 1949 congregational meeting, Pastor Gallup noted the organ was completely paid for in 1948. The old organ was sold for \$300 to a party in New York who also paid for the shipping costs.

In April 1948, a Chimes Fund was established with \$50 from the confirmation class. With the sponsorship of Ladies Aid, a set of memorial chimes were purchased for \$546.78 and installed on December 4<sup>th</sup> for outside amplification. The Maas cathedral chimes were dedicated at the 11:00 a.m. service on Sunday, December 12<sup>th</sup>.

## Purchase of a Parsonage and Plans for a New Church

When the motion to extend a call to Reverend Gallup was made on January 26, 1947, a salary of \$3,000 a year was offered until as such a time a parsonage was secured.

In June, 1947, a building committee was appointed to begin plans for a new church. On December 9<sup>th</sup>, they met with Dr. Elwood L. Bowman, Divisional Secretary of Church Extension under the Board of American Mission of the U.L.C.A.

As a basic premise for the discussions it was assumed that:

1. St. Paul's desired to build a new church.
2. A loan from the Board of American Missions would be needed.
3. At the present rate of growth, and considering the possibilities within this area, a communing membership of 500 could be anticipated 10-12 years from this discussion.

Dr. Bowman recommended a seating capacity of 235 for a communing membership of 500, and that the existing building be retained. He also indicated that the plans for the new building should exclude a basement. He advised that a parsonage would be a matter of good business if it could be purchased for a reasonable sum. He also suggested that St. Paul's retain its present mission status before the Board of Missions, as that would make it easier to obtain a loan.

Dr. Bowman concluded that St. Paul's would need to raise more funds and increase in membership before effectively presenting a loan application before the Board of American Mission. He set a goal of increasing attendance from about 160 to 200 during the next year, as well as having \$68,000 in the Building Fund.

On November 4, 1948, Mr. William Seidemann, Pastor Gallup's father-in-law, proposed that in the coming year St. Paul's temporarily set aside its pledge drive for the church building fund. Instead he would match dollar for dollar whatever the members raised for the parsonage building fund. This was in line with Dr. Bowman's suggestion that the congregation's immediate need was for a church parsonage rather than a new church. At this time, St. Paul's was not filling the existing church building to anywhere near capacity. Mr. Seidemann's challenge was accepted.

The following month, the Seidemann's gave 100 shares of Snap-On-Tools common stock (\$1,400) towards a down payment of the parsonage, and Dr. Samuel Keller wrote a check of \$500.

A parsonage committee consisting of Fred Graff, Jr., Jens Otteson, Frank Jelava, William Seidemann, Richard Dixon, and Pastor Gallup ex-officio recommended the purchase of Pastor Gallup's rented house for \$13,527. The annual church income at that time was \$10,236. Mr. Graff Jr. explained that of all the residences visited by the parsonage committee, the pastor's present home was by far the most reasonable purchase the church could make. The congregation voted to acquire the home by a vote of 86 in favor and two opposed. In August 1949, St. Paul's purchased and refurbished the parsonage.



*Pastor Gallup's Residence in  
April 1947*



*Refurbished Parsonage in  
August 1949*

The congregation held a special meeting on August 13, 1950 to consider purchase of two vacant lots on the southwest corner of Lewis Avenue and Garden Place. The size of the two lots was 119' x 145'. The lots would provide much-needed parking space, a potential building site for the new church, or for a parish home or other future building.

Dr. Bowman also recommended acquiring more space, so St. Paul's purchased a third lot (39) on Lewis Avenue in anticipation of a new church building. The cost of two of the lots (37 & 38) was \$3,500, though a donation to St. Paul's of \$200 brought the price down to \$3,300. The cost of the third lot is unknown. St. Paul's now had parking for 50 cars.

St. Paul's launched a second drive for the church building fund on November 2, 1950 with the goal of \$68,000. Three hundred people attended the New Church Drive Banquet in the Whittier school gymnasium. Toward the latter part of 1951, however, it became

apparent that the congregation would not reach its goal by the end of the next year. The expected amount would be closer to \$45,000. This delayed the approval for a loan from the Board of Missions.

On December 2, 1950, the church council and an appointed building committee met with Dr. Bowman to make further plans for a new church building to be erected on the southwest corner of Lewis Avenue and Garden Place. A final design was approved and Architect T. Norman Mansell of Philadelphia was asked to proceed with the architectural plans.

Pastor Gallup wrote: "Design No. M173211 with 80,400 cubic feet of space has a basement only under the chancel. This design seats 203 in the nave, 35 in the chancel, and 17 in the baptistery, making a total seating of 255. This plan of Gothic design agreed by all church councilmen and the church building committeemen was the best for our needs at a cost to fit our budget. The parish unit (our present educational unit) could be built later."

In the following letter from Dr. Bowman to the Board of American Missions: "The Church Council tentatively approved the Memphis Series Design M-238 to be enlarged by widening the building 3 feet to provide 7 instead of 6 seating per pew in the nave."

The Church Architecture Committee provided the description of St Paul's Series M-268 on July 6, 1951:

1. A one-story church and parish hall building (future educational unit) with partial basement under the chancel. Exterior is stone construction in English style.
2. Plan to be constructed in two units.
3. Church wing contains the vestibule with cloak rooms on either side, the nave seating 238, a baptistery alcove seating 17, the chancel and choir, the latter seating 30, a sacristy, class room, and a rear foyer later to become a future cloister connecting with the parish building.
4. The parish building (our present educational unit) contains three class rooms, an assembly hall with stage at one end and class rooms along one side of the length of the hall

On September 6, 1951, Herb Seyring agreed to accept the chairmanship of a whole “new church building committee.” New members were Henry Roberts, Dr. Rudolph Ewig, and Marvin Fasse. Pastor Gallup wrote to architect Mansell on September 11<sup>th</sup> explaining the delay in St. Paul’s response to their queries: “This is in reply to your letter of September 7<sup>th</sup>. I am sorry to say that my ‘new church committee’ appointed the first of this year did almost nothing for the first six months of this year and so I have now appointed a whole new committee. I think these men will do a good job.”

Pastor Gallup announced that the congregation had unanimously adopted the plans for building a new English Gothic church at its January 15, 1952 annual congregational meeting. The congregation was now in the midst of a three-year drive to raise \$68,000 so as to be able to break ground in the summer of 1953. The church was to be built on the newly-purchased lots that were being used for parking.

## **Resignation**

At a council meeting on July 12, 1951, church councilman Dr. Rudolph Ewig spoke of his concern about Pastor Gallup’s physical condition. With the council’s approval, the pastor was granted an additional month of vacation with pay in order to give him required rest and quiet.

On January 3, 1952, Pastor Gallup submitted his letter of resignation. Council members attempted to persuade him to reconsider his resignation. They tried to find ways of easing pastor’s tension and aid him in his duties.

Jens Otteson reported that he might have reconsidered willingness to reconsider his resignation if the people of St. Paul’s would have conducted more of their church responsibilities. The council felt that Pastor Gallup had served the church well, both spiritually as well as physically, more than any other pastor before him, and they would do everything possible in their power to keep him at St. Paul’s.

It was suggested that the laymen league allow women to participate. It would do “more good” for St. Paul’s to have women performing more important roles such as deaconesses and even council members.



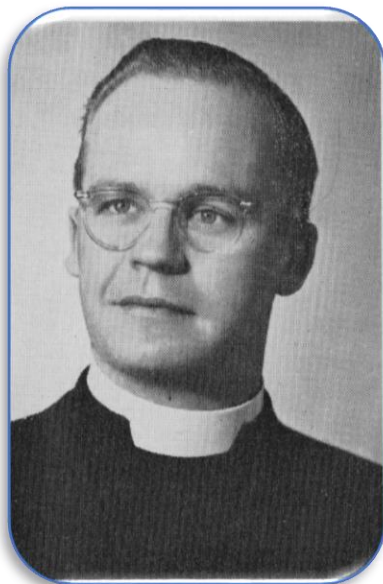
At the January 15, 1952 annual congregational meeting a member asked pastor Gallup the motive for his resignation. The pastor replied that he believed that he had done all he could to help St. Paul's in its progress, and that a new pastor from then on could do a better job, especially in the new church drive. In a vote of confidence, 115 voted to reject his resignation and one voted to accept his resignation.

Nevertheless, an article in the *News Sun* read: "The Rev. Wesley H. Gallup, president of the Waukegan Church Federation, has resigned as pastor of St. Paul's Lutheran Church to become pastor of the Evangelical Lutheran Church of the Epiphany in Milwaukee. The resignation becomes effective Feb. 1, 1952."

## Salstrom Era

**Reverend Alden L. Salstrom**

(July 15, 1952 - November 1, 1980)



The place of Reverend Alden Luther Salstrom's birth, in conformity with his Swedish ancestry, was the little town of Wilmont, Minnesota. Born on December 22, 1913, he was one of five children. Since his mother died when he was seven and his father was a traveling insurance adjuster, he was placed into the care of his paternal

grandparents and aunt in Rockford, Illinois. From the age of eight, Salstrom said, he knew he wanted to be a minister. Salstrom credited his mother, who trained at the University of Minnesota for missionary work before marrying his father with instilling in him an interest in service to the church.

Pastor Salstrom spent most of his youth at the home of his grandparents, attending the same schools and church his father attended. After four years of employment in the industrial field, Alden Salstrom enrolled at Carthage College in Carthage, Illinois, which was affiliated with the United Lutheran Church. He graduated second highest in his class in 1939 with a Bachelor of Arts degree as well as a fellowship to the state University of Iowa. In 1940, while a student at the State University of Iowa, he married Miss Carolyn Fecht, his Carthage College sweetheart. Miss Salstrom was a Smith-Hughes graduate in the field of home economics. Prior to their marriage, she developed the high school home economics department home economics in Dallas City, Illinois.

In 1940, he received his Master of Arts in the fields of philosophy and psychology from Iowa and continued under a graduate assistantship to work for his doctorate. He enrolled at Hamma Divinity School in Springfield, Ohio in 1941, and graduated with a Bachelor of Divinity degree in 1944. Upon his ordination he assumed his first pastorate at Belmont Park Lutheran Church in Chicago, which lasted eight years.

While at Belmont Park, he served as secretary of the board of the Lutheran Home Finding Society, a member of the Synodical Brotherhood Committee of the United Lutheran Church, treasurer of the Ministerial Alliance of the United Lutheran Church of Chicagoland, president of the Carthage College Choir Alumni Club, chaplain at St. Anne's Hospital, and an ardent worker in civic affairs. He also pursued his academic life with further part-time studies at the Chicago Lutheran Seminary at Maywood.

On May 15, 1952, Pastor Salstrom accepted a call to become pastor of St. Paul's Lutheran Church. He came to St. Paul's with his wife and three children, Janet, 11; Susan, 6; and son Stephen, 2 on July 15, 1952. The family settled in the parsonage at 15 N. Elmwood Avenue with the agreement of building a new parsonage adjacent to the church. Succeeding the Reverend Wesley Gallup, Pastor Salstrom's

first service at St. Paul's was held on July 20<sup>th</sup>. On August 10<sup>th</sup>, he was officially installed as pastor of St. Paul's Lutheran Church at an 8 p.m. service. The service was conducted by Dr. Armin George Weng, president of the Chicago Lutheran Seminary at Maywood.

When Pastor Salstrom first visited St. Paul's, the only landmarks he remembered were the Bally Muck Tavern on Grand Avenue, Whittier Grade School, and a prairie. He arrived when the community and church were ripe for expanding. The confirmed membership of St. Paul's was 357; attendance at the two services every Sunday averaged 186. The Sunday School had an enrollment of 211 children and averaged 114 in attendance each week. Church income (all accounts) was \$26,500.

Some of Pastor Salstrom's additional duties in 1959 were: reelection to a fifth term as secretary of the Chicago Conference of the Illinois Synod of our ULCA; the completion of the second term of presidency of the Carthage College Alumni Association; reappointments to the Board of Trustees of the Chicago Lutheran Theological Seminary; and appointment by His Honor Mayor Robert Sabonjian as chairman of the Decency Board of Waukegan.

During 1959 and through the 1960s and 1970s with the increase in church membership, Assistant Pastors Fred Milhouse, Alden Tormala, and Thomas Church were called successively to share ministerial responsibilities.

In 1964, Pastor Salstrom wrote: "Since the time of my arrival in Waukegan - almost thirteen years ago - it has been my dream not so much to see the beautiful modern English Gothic structure which provides facility for our Sunday worship and learning, but rather to see the time when on an average Sunday one thousand persons would come for spiritual sustenance to St. Paul's. As you see by the reports, during the first quarter of the year 514 attended church, 417 attended Sunday School - that's a total of 931, pretty close! But all the year through, that number diminishes to a total of 787, leaving us a long way from our goal."

Church and Sunday school attendance was at its peak in 1964. While church membership remained incredibly stable after 1965, Sunday school attendance began to fall from its peak of 366 students to 145 students in 1980, a decrease of 60 percent. The neighborhood was

changing and Whittier school closed in 1983 due to low student enrollment, but opened again in 1989.

On May 25, 1969, Pastor Salstrom was honored on the occasion of his 25<sup>th</sup> anniversary of ordination to the Christian ministry. In those past 17 years he had seen the membership at St. Paul's grow from 357 confirmed members to 1,375. A new parsonage was built in 1953, a modern English Gothic style church was completed in 1955, and an overcrowded Sunday school prompted the congregation to build an educational unit in 1963. Yet, St. Paul's managed to retire the debts on the church and parsonage 17 years ahead of its scheduled mortgage due date and before the educational unit was finished.

Building is only a part of Pastor Salstrom's accomplishments. There were many church and community-related programs that brought our congregation together. In 1973, we had our first Advent Festival which was put together by circle members within our Lutheran Church Women's (LCW) organization. Our chancel was adorned with beautiful symbolic banners provided by our Fine Arts Guild in 1975. Steps were taken to enhance the congregation's stewardship role with the organization of the Living Memorial Fund in 1972, and the introduction to the financial commitments through Pony Express in 1979. In 1974, St. Paul's began early Communion for pre-confirmands. And with the introduction of the Bethel Bible Series and its Teacher Training Classes, we paved the way for better understanding of the Holy Bible beginning in 1978. *The Lutheran Book of Worship* was placed in our pews in 1979.

Church members in the 1970s continued to reach out to the community with support of C.O.O.L. (Christian Outreach of Lutherans), Transitional Housing, Meals on Wheels, Hunger Appeal, Compassionate Friends, Lake County Chaplaincy, and a hot meal served every third Monday of the month for senior citizens through 3F (Friends, Food and Fellowship), offered by our Lutheran Church Women's organization. Women's circles provided a major part in invigorating the spirit and substance of St. Paul's. During 1979 our hearts went out in a co-sponsorship of a refugee Laotian family of father, mother, three daughters, and one son. This brother-helping-brother project was shared joyfully with the members of Trinity Lutheran Church.

## St. Paul's Builds a New Parsonage

On July 15, 1952, at Pastor Salstrom's behest, the congregation agreed to build a new parsonage on the northwest corner of Garden Place and Lewis Avenue, adjacent to the old church. The building was financed in large part from the sale of the present parsonage located at 15 North Elmwood Avenue. Thanks were offered to Mr. H. D. Olson for the gift of insurance on the parsonage and the conduct and financing of the entire transaction, and to First Federal Savings and Loan for efficient handling and granting of the loan. Special thanks were also given to Dr. Rudolf Ewig, vice-president of church council, for supporting the program and providing a timely stop-gap loan when we needed it.

In the fall of 1952, members of St. Paul's turned out on a Wednesday morning for a service celebrating the ground-breaking for the parsonage. This seven-room home with a Lannon stone front, and a Garlinghouse, was built by Willard R. Shields. Pastor Salstrom is shown below turning the first shovelful of dirt during the ceremonies.



*Pictured: Steve Salstrom, Carolyn Salstrom, Gustal Denart, Eleanore Lane, Edna Seyring, Adrian Seyring, Bob Bousson, Frank Jelava, Herb Seyring, H.D. Olson, Dr. Rudolph Ewig, Pastor Alden Salstrom, Al Gustafson, Joe Schneider, Marvoin Fassee, Elsie Denart, Ursula Molback and Margaret Sneesby. The Old Church is in the background.*

While beginning of construction was delayed until November 16<sup>th</sup> and with a promise of completion within 100 working days, Pastor Salstrom and his family were able to move into the new home by March 15, 1953, 30 days ahead of schedule.

The new parsonage was dedicated on Sunday, April 19, 1953, at the 3 p.m. service with Rev. Robert L. Hooker, mission pastor of the Illinois Synod of the United Lutheran Church, officiating. An open house was available for members and friends of the church from 3 to 5 p.m. and from 7 to 9 p.m.

## **The Building of the New Church**

In St. Paul's 1952 annual report, Pastor Salstrom described where the church stood in its goal of the \$68,000 requested by the Board of American Mission before ground-breaking for the new church could begin. They had \$22,000 cash on hand, stocks worth \$16,000, government bonds worth \$2,000, and \$4,500 spent to date on construction plans and specifications. To accomplish their goal, they obtained temporary loans from the mission board and the Cheltenham National Bank and Equitable Reserve Association of Neenah, Wisconsin. Thanks to Pastor Salstrom's father, who had a connection to the bank, they granted the loan.

## **New Church Ground-breaking Service**



On Sunday, June 28, 1953, at the 4:00 p.m. ground-breaking service, ceremonies began with Pastor Salstrom and former Pastor Gallup leading the choirs and council members in a procession from the little white church to the new site at 824 N. Lewis Avenue. Actual construction didn't begin until late 1953.

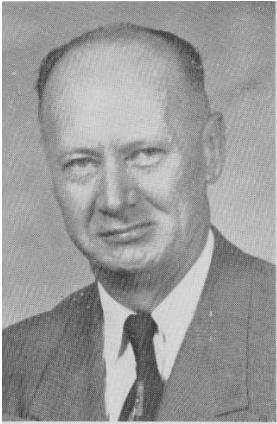


*Pastors Salstrom and Gallup turn the first shovel at the ground-breaking service*

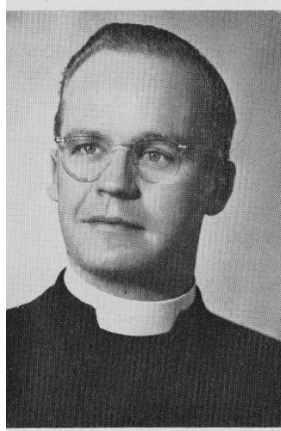


*Participants in ground-breaking were Pastor Alden Salstrom, Pastor Wesley Gallup, William Seidemann, Herbert Seyring, Albert Gudmestad, Dr. Rudolph Ewig, Frank Jelava, Robin Aeschlimann, Henry Roberts, Rowland "Bill" Kilburn, Joseph Schneider, George Perl, Marvoin Fasse, Fred Graf, J. D. Murray, H. D. Olson, Robert Bousson, Richard Dixon, Merl Peterson, and Fred Reckling.*

## Members of the New Church Building Committee



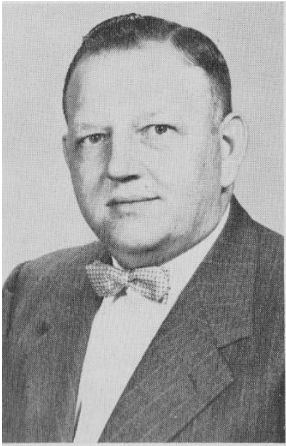
Herbert Seyring



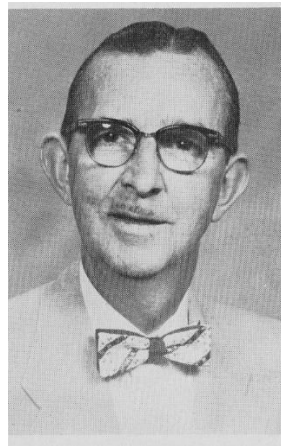
Pastor Alden Salstrom



Jens Otteson



Marvin H. Fasse



Henry Roberts



Albert Gudmestad

The men on the New Church Building Committee worked with the local supervising architects, Ekstrand, Schad and West, and the designing architect, T. Norman Mansell, of Philadelphia. The estimated cost to build the new church was \$176,000. At the time, St. Paul's lacked the required \$20,000 to build a basement under the nave. At the start, two major decisions helped enhance the present beauty of the building. First, to move the entrance ten feet west in line with the houses to the south; this really became apparent when Lewis Avenue was widened from two to four lanes. Second, to raise the floor level 18 inches which later facilitated installation of sewer drainage from the washrooms.



## Financing

Permanent financing for construction was as follows: The first mortgage was obtained from the Equitable Reserve Association of Neenah, Wisconsin totaling \$48,000 at five percent for 15 years, payable monthly; and five other mortgages totaling \$40,650 was obtained from the Board of American Missions of the United Lutheran Church, to be spread in repayment over some 24 years with interest rates of approximately two percent. An additional amount about \$52,500 was represented in the initial church escrow account (bills paid to date and cash on hand). This meant that the difference between the estimated cost of the new church (\$176,000), and the sum of these amounts (\$141,150), left about \$34,850 to be derived from pledges paid over the next 18 months.

## Cornerstone- laying Service

The cornerstone-laying service was held on May 16, 1954 in the afternoon. All the choirs as well as the congregation participated. Dr. Arthur M. Knudson, Divisional Director of the Board of American Missions of the United Lutheran Church, was the featured speaker. Dr. Samuel L. Keller placed a copper box containing memorable items at the site of the cornerstone. The cornerstone is located on the north side of the church.



The list of items includes a Bible, a Common Service Book, Luther's Small Catechism, and copies of the following: the constitution of the Untied Lutheran Church; the constitution of the Illinois Synod of the United Lutheran Church; the constitution of St. Paul's; a United Lutheran Church 1954 year-book, and the 1954 minutes of the Illinois Synod, ULCA.

Also included were "*The Lutheran*," a church publication of the United Lutheran Church; "*The Gleaner*," the synodical monthly publication; and "*The Advocate*," the congregation's monthly publication. The cover of *The Advocate* featured a picture of the new church. Inside the publication were the schedules of meetings of services and organizations, a history of the congregation, and a letter to those who someday may open the box behind the cornerstone.

The box also contained several bulletins, a church calendar, Sunday school materials, a copy of Saturday's *Waukegan News-Sun*, pennies dated 1930 (the year of the congregation's organizations), a ground-breaking service program, and a cornerstone-laying service program.

There were also: pictures of the present church; the former parsonage; the new parsonage; a listing of the Cradle Roll; children's signatures on small crosses of all the members of the Sunday school; the roll of the membership of the church; the roll of the charter members of the congregation; a list of all those who had contributed to the new church up to the ceremony; and a list of the architects and contractors participating in building the new church.

## **Construction**

Pictures taken by Herb Seyring during the construction are provided to coincide with an article in "*The Lutheran Advocate*" December 1954 edition where Pastor Salstrom describes the progression of the building of new church. He wrote: "The area excavated for basement purposes is at the western extremity of the property, beneath the chancel, sacristy, office, and foyer of the church. In this basement area will be housed men's and women's washrooms, the heating unit for the entire church, seven storage closets, and two fairly good-sized meeting rooms, which may be used as choir rooms, as well as Sunday school class rooms. Not only outside walls, but also inside walls are up

now, window glass is in; and it is expected that heat, radiant heat embedded in the concrete floor, will be turned on later this week.”



“On the first floor, the room at the north, to be used for office space, is enclosed, with the exception of the windows. The floor throughout the first floor is cement. Such walls as are to be, have all been erected. A side door opening into the foyer leads on the south into the church proper, on the west into the stairways both up and down and into the sacristy (where altar supplies will be stored). And on the north to the north wall of the wing”





“In the church proper, exposed laminated trusses arch in their places. Most of the purlins, cross members, are in place. The roof-deck, to be exposed inside the church, is in place above the chancel. Chancel, narthex, and front walls are about ninety-nine percent complete; and radiant heating in the church floor and narthex floor, too, will be turned on later this week.



“Outside one sees the stonework about ninety-five per cent complete. Rising above the chancel roof deck about thirty feet, half the planned distance, is the scaffolding for the sixty-foot steeple. Ornate Indiana limestone work adds another distinctive note. One of

Waukegan's most beautiful churches becomes more and more a reality day by day."

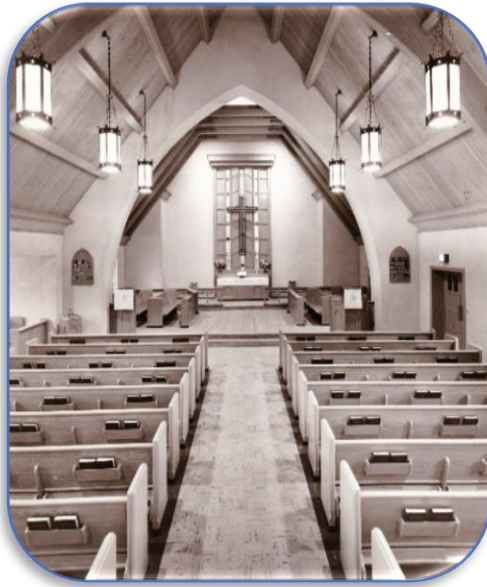


The new church of modern Gothic design with a lannon stone exterior was soon ready for its first service. Considerable work still remained to be done in the office, basement, and second-floor rooms, but the narthex, nave, chancel and foyer were almost complete.



The beautiful front entrance was done in Gothic design of oak and leaded glass, and the doors were painted red.

## The Interior



The interior revealed the consistent plan of the architect. Graceful scissor-like trusses of red fir rose from the asphalt tiled floor (with its imbedded radiant heat) to the thirty-foot ridge of the blond wood ceiling. Twelve 32-inch Gothic lanterns wrought of Swedish iron light every portion of the nave and were equipped to be dimmed with rheostat controls. Forty-three Cushion-Eze pews and matching cushioned kneeler were installed. A baptistery, located adjacent to the nave of the church, brought nave seating to 230, and a total of 270 with chancel choir seating.

Chancel furniture, provided by the pew manufacturers, were of the same red oak and design as the pews and other wooden portions of the church. The recessed organ console on the north side of the chancel included controls for the chancel. Maas Cathedral Chimes were electronically equipped to be transmitted through four speakers installed in the spire, as well as within the church.

The focal point of the church was a beautifully-carved seven-foot red oak altar, the paraments of which reflected the season of the church year. Rising above it were three bands of stained glass, blue and red, each fifteen feet high, six inches wide, set in a red oak reredos. An eight-foot reredos cross of wood, burnished brass and wrought iron, was placed against the reredos.

## St. Paul's has a New Home at 824 N. Lewis Avenue

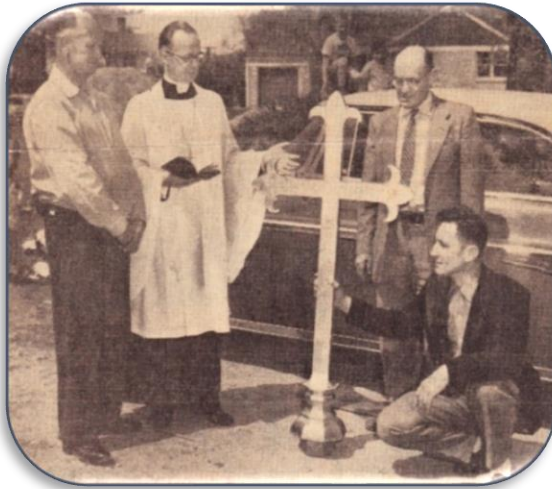


With the construction of the church near completion, the first service in the new building was held on Palm Sunday, April 3, 1955 with Margaret Sneesby, superintendent of the Sunday school, leading the children into the sanctuary. The attendance at four services totaled 960. The Maundy Thursday Communion service held on April 7<sup>th</sup> was the largest in the history of the congregation with 242 communicants.



## Steeple and Cross

The sixty-foot steeple, steel-framed and copper-sheathed, rose ninety feet above the ground. On May 1, 1955, the four-foot high, 300-pound, gold-leafed bronze cross was erected atop the new St. Paul's Lutheran Church at 2 p.m. On the inside were four speakers to amplify the Maas Cathedral Chimes. Just prior to the cross being lifted into place, Pastor Salstrom held services and blessed the cross. The steeple and cross were the work of one man, Mr. Al Kraus of Kraus Sheet Metal of North Chicago. The total cost of the steeple and cross was \$11,800. The cross alone was approximately \$1,000.

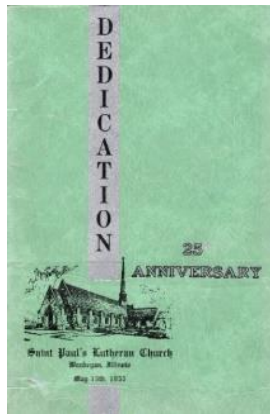


*From left to right are Herbert Seyring, building chairman, Pastor Salstrom, and cross builders Joseph Krause, Sr. and Walter Krause.*

## Dedication of New Church

Dedication of the new church was held on May 15, 1955; the same day as the celebration of the twenty-fifth anniversary of its organization as a congregation. The dedication committee compiled material for a book to be distributed during the services. The book contained highlights in St. Paul's history, facts and descriptions of the new church architecture and appointments, as well as a complete list of all memorial gifts, with donors' names.





Dr. H. J. McGuire, President of the Illinois Synod, officiated at the 4 p.m. dedication service. Afterward, Lydia Aid served a buffet supper at Whittier School.

### **Pastor Salstrom's Message given on May 15, 1955**

"The new church we humbly and reverently dedicate upon the 25<sup>th</sup> anniversary of this congregation's organization is the fulfilment of dreams and labors of a long, long roll of devout followers of Christ. Some have been called to a heavenly home, some have moved away from us, some remain active in this new building. Fool's folly would be any effort to name them. Pastors and laymen and women and children have given sacrificially, labored faithfully, side by side. Upon twenty-five years of past effort ours has been the unmerited privilege of setting the capstone, this 15<sup>th</sup> day of May, in the year of our Lord, 1955.

"We thank Thee that Thou has enabled us to build this House to thy praise; and we beseech Thee, accept the labors of our hands to Thy glory; and grant that in this holy and beautiful house we and our children may know Thee truly, love Thee purely, and worship Thee sincerely; through Thy Son, Jesus Christ, our Lord. Amen."

### **Memorial Gifts**

New church memorial gifts were dedicated at services the next Sunday morning, May 22, 1955, with Dr. Armin George Weng, President of the Chicago Lutheran Seminary, Maywood, preached at both services. The following week, after a new audio system was connected to the chimes and organ, they were dedicated with an

afternoon recital by Mr. Steven Baranoski, a Lyon and Healy incorporated staff concert organist.

Some of the gifts that were dedicated are listed below:

Steeple and cross – The price complete for steeple and cross was \$11,800. The cross alone was approximately \$1,000.

Audio System – The Maas Cathedral Chimes were adapted for broadcasting from the steeple, as well as within the church. The system included an amplification feature for the chimes and the organ, as well as a public address system and recordings. It also included the installation of speakers to face north, east, south and west, mounted behind louvered steeple sections. Price: \$1,500.

Altar – The altar, seven feet long, carved with attractive simplicity. Price: \$150.

Pulpit and Lectern – The pulpit and matching lectern, magnificently done to harmonize with the altar. The pulpit cost \$375 and the lectern \$150.

43 pews – These pews for the nave, baptistery, and chancel choir, of red oak with Gothic design, and equipped with Cushion-Eze seating. Price: \$140 each, for a total of \$6,020.

Baptismal font – The font selected to match the altar, pulpit, and lectern was to be set between the choir and baptistery. Price: \$135.

Two Communion chairs – The chairs were set behind the chancel arch to provide seating for the clergy. Price: \$50 each, for a total of \$100.

The reredos cross – Placed against the reredos, above the altar, this eight-foot cross of wood, burnished brass, and wrought iron, was designed by T. Norman Mansell, the designing architect. Price: \$50.

Since the church was built, generous memorial gifts enabled the total cost of \$180,000 to be paid off in eight years. The original mortgage was for twenty-four years. When Lewis Avenue expanded from two to four lanes, the grade line on Lewis dropped 5 inches. On October 3, 1963, the council approved building a new arrangement of

walks in front of the church as presented by architect, Mr. West. Later, during the week of May 7, 1964, the city of Waukegan tore down the old church.

## **Church Attendance Expanded**

In spite of the expanded seating capacity, attendances required the addition of a third Sunday service at 8 a.m. to begin in February, 1956. From the beginning of 1952 to the end of 1955, church attendance increased from 357 to 644. Sunday school was held in the crowded area downstairs, underneath the northern wing of the church and chancel, where two large classrooms were located. By November 1956, the overcrowded conditions compelled St. Paul's to install a second Sunday school session each week, separately staffed and took place at 9:30 a.m. and 11:00 a.m.

## **What New Year's Means to the Teenager**

**By Barbara Bopp**

The following article was prepared as part of the worship service in the intermediate-senior department of our Sunday school on December 29, 1957 by 15-year-old Barbara Bopp. Mrs. Peter Vig, the teacher who submitted the article to *The Lutheran Advocate*, felt it merited a printing as a very fine example of teenage thinking and values.

"I believe the New Year should mean to the teenage three important things. First, the widening of his horizon of knowledge, second the broadening of his field of Christian service, and third more success in attaining his personal goals. The New Year is a time for thinking seriously of what our life should mean and looking back to see if we have reached any of the goals we set at the beginning of the year.

"When we consider our educational advantages which we have for the taking, we should realize how important it is to make the most of them. Much has been written in the newspapers in the last few months and we should realize that each of us has an obligation not only to ourselves, our family and our school but to our country as well. Perhaps someday the survival of our nation and our very selves may depend upon our willingness to take advantage of our educational

opportunities. We should remember we go to school, not just to get by the teachers tests but to learn as much as we are capable of learning.

“The teenager is usually thought of as a person with boundless energy. Often this same energy could be used to help in many worthwhile causes. In defense of us as a group I believe that most of us would be willing to help in many ways if we were given a job to do, but perhaps we could make the coming year one in which we would be willing to offer our time and talents in more worthwhile causes not only in our church but in neighborhood, community and school projects.

“Like an adult a teenager without an aim in life is a person not worth knowing. Often the aim or goal changes from year to year and sometimes it is even an unattainable goal. But if you do not have a specific purpose your time and talents go for nothing. The fact that these goals change from year to year is good. We would be ashamed if we were still working at the same goal we had when we were six. One aim in life which is common to most teenagers is to be liked and admired by his contemporaries. This could more often be accomplished if we could only forget ourselves and think of others first.

“When we look forward to the New Year and think of all the things we should and would accomplish it seems like an insurmountable task. But we of the Lutheran religion are luckier than most. Ours is a religion of faith. We feel that we can obtain our goals only by the help of God and if we are not entirely successful, we are not ashamed if we have done our best.”

## **Assistant Pastor Fred A. Millhouse**

(September 1, 1959 – August 15, 1963)

With the rapid growth of the congregation (enrollment grew from 474 in 1954 to 1,073 by the end of 1959) Pastor Salstrom solicited the calling of Pastor Fred Millhouse for assistance.



Pastor Fred A. Millhouse was called to be assistant pastor of St. Paul's on July 26, 1959 and started on September 1st. Dr. A. Howard Weeg, President of the Illinois Synod of the United Lutheran Church in America, and former pastor of St. Paul's, officiated Pastor Millhouse's installation service on October 4, 1959.

He and his wife, Beatrice, took up residence in their newly-purchased home at 2228 Glen Flora Avenue. They moved there from Wilmette, where he had served as pastor of the Wilmette Evangelical Lutheran Church for 16 years.

Born in Murphysboro on July 26, 1895, Pastor Millhouse graduated from Carthage College, and from the Chicago Lutheran Theological Seminary at Maywood. Among his former parishes were: Messiah Lutheran Church in Rockford; Trinity Lutheran Church and United Lutheran Church in Sedalia, Missouri; Salem Lutheran Church in Jonesboro, Illinois; and First Lutheran Church in Dongola, Illinois.

Pastor Millhouse was a veteran of World War I (December 7, 1917 – February 27, 1919) and served as chaplain in the American

Legion for 20 years. He also served as chaplain of the Wilmette Lions Club and was president of the ministerial association of that city.

In his early ministry, Pastor Millhouse found real joy in being involved in the activities of the young people, even camping with them under the stars. Many young people at St. Paul's remember his knack for making Bible games exciting and fun. His philosophy about youth was that he never found a delinquent young person in his life, only delinquent parents. One of Pastor Millhouse's responsibilities at St. Paul's, was teaching confirmation. As Kris Reckling reflected, "Confirmands knew their Bible."

While at St. Paul's, he and Pastor Salstrom alternated leading the Sunday church services. Pastor Millhouse began every sermon he preached with "Dear friends in Jesus Christ." On April 19, 1961, Pastor Millhouse celebrated the fortieth anniversary of his ordination which was also he and his wife's fortieth wedding anniversary. St. Paul's discontinued receiving the church's periodical, "The Lutheran Advocate," and with Pastor Millhouse serving as the editor, began its own publication called "St. Paul's News." First on the page of each monthly edition was Millhouse's biblical message to the congregation.

Pastor Salstrom wrote: "I'll thank God for Pastor Millhouse's coming. I'll thank God for his understanding and accepting the challenge to do together that which no pastor could hope to do all by himself. What a blessing he is. And we are pleased to share our blessing with Trinity Church, Harvard, when he served as their Missioner." He added immeasurably to the spiritual life of the congregation. In addition to his ministry at St. Paul's, in 1962 he served as president of the Waukegan Area Ministerial Association.

On July 15, 1963, after nearly four years of service, he submitted his resignation from his calling at St. Paul's effective as of August 15th. On Sunday, August 11, 1963, Pastor Milhouse preached his farewell sermon at all three morning services. Then at four o'clock in the afternoon, St. Paul's held a farewell reception for the Millhouses at the church.

Pastor Millhouse accepted a call as assistant pastor to a neighboring parish, St. Andrew's Lutheran Church in Mundelein, Illinois. Sadly, Pastor Millhouse's wife, Beatrice, died three months after they left St. Paul's. Pastor Millhouse died in August, 1976.

## **Purchase of Trinity House**

The congregation approved the purchase a house at 821 Westmoreland Avenue adjoining our church property on December 20, 1959. In February 1960, St. Paul's bought the house, which was previously used as the parsonage for Trinity Lutheran Church for \$17,000. This required a loan from First Federal Savings and Loan Association of Waukegan. St. Paul's used the Trinity house as rental property with an income of \$125 per month.

## **Building of Educational Unit**

### **Analysis of Survey to Build July 17, 1958**

To evaluate our needs and potential to build an educational unit, Robert E. Bateman and Associates was given the opportunity to make a survey on our-behalf.

"Approximately 50,000 people live within a three-mile radius of St. Paul's. The population growth has been normal for an industrial area. The church is located in a rapidly growing residential section of the city. The average income of the families residing in the area is well above the national family average and we believe we would be safe in placing it at approximately \$7,500 to \$8,000.

"Approximately two-thirds of the families are in that period of life when they are raising young families. They have probably just bought a home; they are maintaining a relatively large insurance program; and they are preparing for the time when their children will go to college. It also indicated that one-fifth of the families are in the most financially productive time of their life and while their expenses may be high due to insurance, college education being paid for and maintaining a high social position they still are able, financially, to offset the lack of giving ability in the younger age group. It further indicates that the number of retired people is relatively small."

## **Two Campaigns**

### **United for Christ's Tomorrow Fund Drive**

On March 8, 1959, prior to accepting the goal of working towards the building of an educational unit, the congregation agreed to the apportioned goal of \$31,416, assigned by the Illinois Synod for "United for Christ's Tomorrow," to be paid by the end of December 31, 1961. This money was to be used to support a campaign to build a new chapel for our Chicago Lutheran Theological Seminary, establish a second campus for Carthage College, build a central year-round lodge at Lutheran Camp Alpine, and expand Lutheran student facilities on two non-Lutheran college campuses. Dr. Samuel L. Keller, our church's lay-delegate and Illinois Synod member of the Social Missions Committee enthusiastically supported this program.

### **Educational Unit Fund Drive**

By 1959, Sunday school attendance had increased from an average of 155 during 1954 to 304. Even though Sunday school classes were held at two services, and in multiple locations (the old church, Pastor Salstrom's parsonage basement, and two large rooms in the new church basement), attendance had increased to the extent that conditions were intolerable. Given the current church debt, the congregation deemed it possible to begin working toward a new educational unit in 1960, since one to two years would elapse before funds would be needed, and two to three years before the building could be used. On July 28, 1959, the congregation approved the plan to combine the "United for Christ's Tomorrow Fund" campaign with a drive to address the church's urgent educational needs and build an educational unit.

Accordingly, in 1960, Pastor Salstrom formed two committees under Herbert Seyring, as General Chairmanship of the Educational Unit: the Educational Unit Construction Committee and the Finance Committee.



## Educational Unit Construction Committee



*Chairman Bill Kilburn, Alfred Yesland, E. E. Hibbing, John McFarland, Herbert Seyring,*

*Miss Lucille Robinson, Mrs. Alden L. Salstrom, and Mrs. Herbert Seyring (for Mrs. Harold Fulton)*

## Finance Committee



*Andrew Lang, Henry Roberts, Dr. S. L. Keller  
Chairman Karl Holzman, and Robert Miehe (William McAndrew is Missing)*

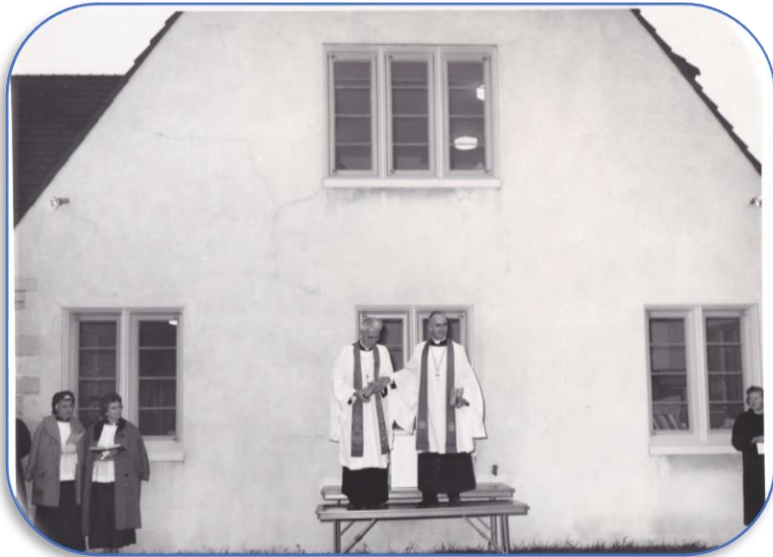
Three congregational meetings were held to authorize approval to fund and build the educational unit:

1. June 25, 1961 - The congregation authorized the building of an educational unit at a cost of approximately \$200,000. One

hundred members approved and no one opposed the resolution. This allowed St. Paul's to enter into a contract or contracts for architectural and engineering services for the erection of a new building. The congregation began their \$200,000 Educational Unit Drive on September 24, 1961.

2. March 18, 1962 – The congregation voted to borrow funds for the erection of the educational unit. A total of 195 members were in favor and 48 members opposed.
3. July 29, 1962 – The congregation voted to authorize the borrowing of a total sum of \$240,000 for the purpose of refinancing the balance of the church's existing mortgages on the church building and educational unit, and certain other church obligations in the amount of approximately \$8,000. Eighty-three members were in favor and no one was opposed.

### **Ground-breaking**



The ground-breaking for the educational unit began on November 18, 1962 at the 4 p.m. service with Pastors' Millhouse and Salstrom standing at the site.



*Sunday School Superintendent Lucille Robinson and Building Chairman Herbert Seyring werethe first to break the ground.*



*Dr. S. L. Keller, Karl Holzman, and Frank Jelava each turned over three spadeful while naming the Persons of the Trinity.*

The Rev. Armin George Weng, Ph.D., President of the Lutheran School of Theology, in Chicago, presided in the ground-breaking service inside the church.

## Construction of Educational Unit

Construction began on April 13, 1963 for building of the educational wing on the northside of the church. Designed by Ekstrand, Schad and West, the building matched the modern English Gothic architecture and Lannon stone exterior of the church. The Fiochi Firm obtained the stone from the same quarry in Wisconsin as was used for the church. Herbert Ruesch of Zion was the general contractor.

The structure would include six departmental areas and three classrooms, a remodeled church office, offices for the pastors, a dining area to accommodate approximately 300 persons, a modern kitchen adjacent to the dining room, and washrooms on each of its three floors. The finished building would be approximately 14,000 square feet.

### Cornerstone-Laying

St. Paul's held a service for setting the date stone in the westside of the educational unit on October 13, 1963 at 4 p.m. Pastor Salstrom led the service and all of the choirs, members of the building committee, and the congregation participated. Reverend John Spaid, Camp Alpine Director for church youth, was the guest speaker.



The pinnacle of the ceremony was when Herbert Seyring, center left, building chairman, and a stone mason representative from Caesar Fiochi and Sons, placed a copper box behind the date stone. The contents placed in the copper box are listed below:

1. Bible
2. Service book and hymnal
3. Luther's Small Catechism
4. Sunday school literature
5. Sunday school offering envelopes
6. Annual report from January 1963
7. Waukegan *News-Sun* from Saturday, October 12, 1963
8. Crosses listing Sunday school children and church members attending the cornerstone-laying service
9. 1963 pennies brought by Sunday school children
10. Church directory
11. 25<sup>th</sup> Anniversary New Church Dedication booklet
12. Current congregational constitution
13. Proposed new congregational constitution
14. Daily devotional booklet
15. Waukegan Area Council of Churches directory
16. Carthage College bulletin
17. Camp Alpine and Camp Augustana bulletins
18. Names of the Cradle Roll
19. Letter to those who may one day open the box

### **Educational Unit Building Completed**

The new educational building was completed and opened for use in December 1963. Because the stone masons used the same Lannon stone that was used for the church, it appeared that everything was built at the same time. Herb Seyring said: "The erection of both buildings in the same decade was a terrific accomplishment and demonstrated the real spirit of St. Paul's. The church was built on the basis of a thousand members; the educational unit was based on a maximum of 500 pupils."

On December 22, 1963, 377 Sunday school children marched class-by-class into the new building to inaugurate its use. The

inscription above the educational unit east entrance door reads: "The Master Is Here and Calls for You."

By March 1963, St. Paul's had fully paid off the parsonage and church, seventeen years ahead of schedule. Thus, the church was able to proceed with final contract negotiations, mortgage, and expenses for the educational unit. The general contract with North Shore Savings and Loan Association amounted to \$201,743. The total cost, including mortgage charges, architectural fees, attorney fees, furniture, church and parsonage landscaping, came to about \$230,000.

### **Dedication of Educational Unit**

Dr. Robert Marshall, President of the Illinois Synod, formally dedicated the new educational unit on March 15, 1964. A week of festivities followed, including a congregational dinner and a community open house. The unit provided classroom facilities for 500 students. The basic purpose in the planning afforded multiple uses of its various spaces. A library and/or conference room is one of the more attractive rooms in the building. Equipped with a small altar, the room may be converted into a chapel.

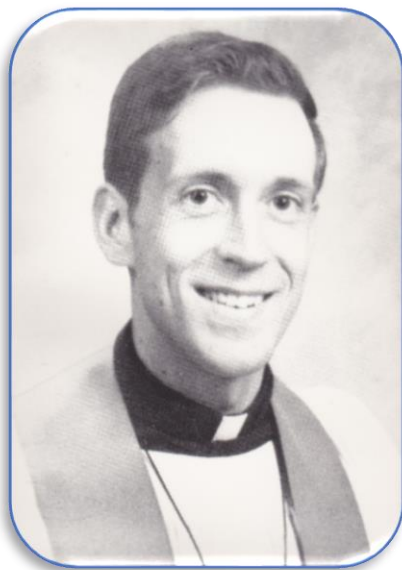
Herbert Seyring, participated in the 8 p.m. dedication service. The Rev. Robert Marshall, D.D., President of the Illinois Synod of the Lutheran Church in America, delivered the sermon and officiated the dedication. The congregation's four choirs also took part.

The next day, the educational unit was opened for inspection at an "Open House for the Community" from 2 to 5 p.m. St. Paul's women served refreshments and Luther Leaguers conducted tours.

Two weeks later, on the 29<sup>th</sup>, Easter Sunday, St. Paul's experienced its largest attendance for Holy Communion with a total of 442 communicants.

## **Assistant Pastor Alden A. Tormala**

(August 20, 1967 – November 15, 1971)



Pastor Alden A. Tormala was born on April 21, 1940 in Chassell, Michigan. After earning a B.A. in philosophy from Augustana College in Rock Island, Illinois, he received his B.D. degree from Lutheran School of Theology in Maywood. He was ordained in 1967 in Houghton, Michigan.

At a special congregational meeting on October 16, 1966, members instructed the church council to initiate efforts to call an assistant pastor. Alden Tormala responded in March, 1967, writing "Upon due consideration of the written terms upon which this call is extended and the relationships established with many of you during our recent visits to Waukegan, I do hereby accept your call with happiness and a humble spirit."

In a letter of introduction from Pastor Tormala in the August 1967 Newsletter, he wrote:

"In a converging of purposes of my parents and God, I came into this world at a place called Portage Entry, which is in the Copper Country

area of the Upper Peninsula of Michigan, on April 21, 1940. I was born to parents of a pure Finnish extraction, whose parents (my grandparents) emigrated from the “old country.”

Because I grew up in a fishing village as the son of a commercial fisherman, I appreciate being able to live here in Waukegan, right next door to Lake Michigan. Yet, as the fishing industry began to die because of the invasion of the lamprey eel into Lake Superior, I concentrated my efforts on studying to be an engineer. So upon graduation from Chassell High School, I entered Michigan Tech, in Houghton, some fifteen miles from my home.

But after two years in engineering something told me – and I believe it was the Holy Spirit – that I should serve God in the ministry of the Church. And in order to acquire a liberal arts background for seminary, I enrolled at Suomi College, at Hancock, for a year. Then I transferred to Augustana College in Rock Island, Illinois, where I was graduated in January, 1963, with an A.B. degree in philosophy.

Soon after entering Augustana, I met a cute little gal named Kathy Stetzer. I could not then have begun to imagine or appreciate the fact the she would be my wife in just less than two years, and that she would faithfully provide for our home as an elementary school teacher for the remainder of my formal education.

I have spent four busy and fruitful years at the Lutheran School of Theology in Maywood preparing for the parish ministry and am now ready to put my education to work in serving our Lord with all of you here at St. Paul’s.

Kathy and I are looking forward to August 20<sup>th</sup> with eager anticipation. That is the day I will be installed as your assistant pastor following what we hope will be a relaxing and refreshing vacation of travel.”

Assistant Pastor Alden A. Tormala was installed at St. Paul’s by Dr. Robert Marshall, Synod President, on August 20, 1967. The church councilmen’s wives invited the congregation to a reception that afternoon to meet Pastor and Mrs. Tormala. Soon, Pastor Salstrom’s ministry was once again a shared partnership. That August, Pastor Tormala found himself making several hospital calls, performed a



triple baptism, observed the Sunday school program in action, and assisted both Luther Leagues in their plans for the coming year.

Pastor Tormala served as an adult adviser to the Waukegan Area Council of Churches youth department from 1968 to 1971, and as chairman of the Illinois Synod, Lutheran Church in America youth committee from 1969 to 1971. He was also a member of the executive board of Northeast Illinois Council, Boy Scouts of America.

In his resignation parting sermon on October 10, 1971, he said:

“I would like to begin by expressing my thanks to you as a congregation. I am always thanking God for you. Not only sometimes, but always, and I am thankful to God for the ministry that I share with you. For Christian ministry is not done alone, even by a pastor, but is a task that is shared by an entire congregation. And so, I thank you for sharing my joys and my frustrations, my successes and my failures. And I thank you for listening to me even when what I said didn’t meet with your approval. And I especially thank those of you who have spoken your mind and stated your honest feelings regarding my sermons. For this open dialogue is necessary to my growth, and to yours in the faith that we share. And I am especially grateful for the words of thanks you have expressed to me when things I have done or said have helped you in understanding yourself, others, or God just a little better.”

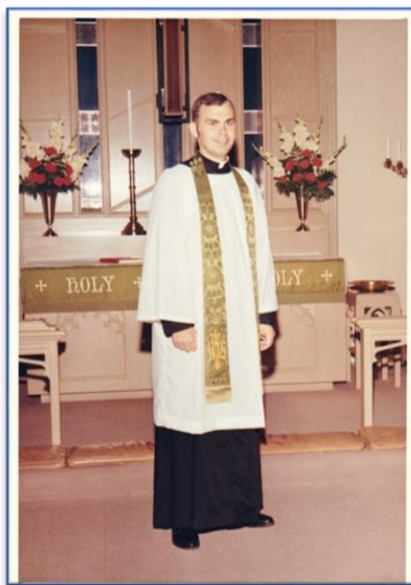
Looking ahead, Pastor Salstrom remarked: “It is going to become clearer and clearer how much Pastor Tormala has been doing in our midst these past four years and three months. At the point of his departure auxiliaries of the church as well as the church proper are well staffed.”

Pastor Tormala departed St. Paul’s on November 15, 1971 to serve a congregation in Fort Wayne, Indiana before becoming an associate pastor in youth ministry at Faith Lutheran Church in Cool Valley, Missouri in 1979. There he faithfully served for over 22 years. He died on July 17, 2001 of an apparent heart attack at his home in Hazelwood. He was 61.

## **Purchase of Morris House**

On the very last day of 1967, St. Paul's decided to purchase the home of Mr. and Mrs. Virgil V. Morris at 817 Westmoreland for \$19,700. The church assumed ownership of the property on April 10, 1968, and referred to it as Morris House. By end of 1968, our total mortgage indebtedness reached \$191,834 with loans of \$167,265 for the education unit, \$11,403 for Trinity House, and \$13,166 for Morris House. Pastor Tom Church and his family later occupied that house shortly after they arrived at St. Paul's; and thereafter became known as the Church House.

## **Ordination of Daniel Brumm**



On Sunday, October 5, 1969, Daniel Carter Brumm was ordained into the parish ministry at St. Paul's.

Daniel Brumm was born on October 29, 1941 and raised in Waukegan, Illinois. Dan was just a boy in Sunday school when Pastor Salstrom first came to St. Paul's. Per Pastor Salstrom's recollection, "As a student in the confirmation class he showed what it means to have a 'photographic memory.' After his confirmation he came back to class for a third year of instruction. He was an enthusiastic member and

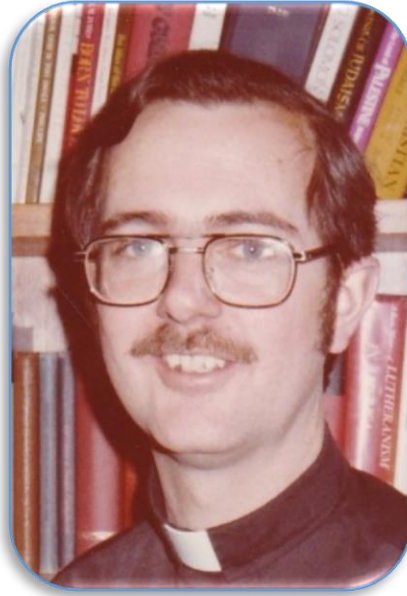
officer of Luther League, and one of the preachers on Youth Sunday. He came to Pastor Salstrom's study one day and announced that he had decided to be a pastor. Dan asked him to help plan his college courses and give him an idea of what seminary would be like. Pastor Salstrom urged him to seriously consider taking graduate work as well, all of which he carried out faithfully. He married Miss Dorothy Lammert at St. Paul's on August 15, 1964.

Following graduation from Carthage College, Brumm obtained a Master of Arts from the University of Minnesota, Master of Divinity from Northwestern Theological Seminary, and a Doctor of Law from William Mitchell of St. Paul, Minnesota.

The president of synod, Dr. Gerald K. Johnson, ordained Dan as a minister of the Lutheran church. Several of the clergy present laid their hands on his head as the officiating president declare, "Take thou authority to preach the Word of God and to minister the Holy Sacraments in the Church." As he rose, a stole, a symbol of the Offices of the Keys, was placed on his shoulders. That stole, together with others representing the seasons of the church year - green (time after Epiphany and Pentecost), red (Pentecost, Reformation Sunday, and ordination), violet (Lent and Advent season), white (Christmas and Easter season, Holy Trinity, Epiphany), and black (historically on Ash Wednesday; no vestment on Good Friday), was a gift to him from the congregation.

Pastor Brumm was installed as assistant pastor of Grace Lutheran Church of Desphaven in Wayzata, Minnesota, on November 2, 1969 with Reverend George Gerberding (our mission pastor) officiating. Pastor Brumm returned to St. Paul's as the guest preacher at our 50<sup>th</sup> anniversary celebrating "Forward With the Spirit."

## **Assistant Pastor Tom Church** (July 1, 1972 – February 15, 1981)



Thomas S. Church was born in Springfield, Illinois, on March 8, 1946, the son of Alexander and Delores Church. He graduated from Augustana College in Rock Island, Illinois in 1968. While at Augustana, he majored in music and sang in the Augustana Choir. He was also deacon of the campus church. In 1972, he received a Master of Divinity degree from the Lutheran School of Theology at Chicago and was employed as organist/choir director at Unity Lutheran Church of Chicago. He interned at the Lutheran Church of the Good Shepherd in Prospect Heights.

At the recommendation to the congregation by the president of the Illinois Synod, Dr. Gerald Johnson, Pastor Church came to St. Paul's to be interviewed. That Sunday, March 12, 1972, the senior choir sang "Surely the Lord is in This Place" by Carl Mueller. (This became a favorite song of Pastor Tom's, and was later sung on his last Sunday service at St. Paul's on March 3, 2002, and again at his memorial service on January 27, 2013).

On the church resolution in March, 1972, to call an assistant pastor, Thomas S. Church received an overwhelming positive vote to be called to St. Paul's Lutheran Church in Waukegan. His response was received on April 5: "After careful thought and much prayer I have decided to accept your call to become your Assistant Pastor. My decision is based in part on the open and frank discussions with the council and call committee and on conversations with Pastor Salstrom." His first call began on July 1, 1972. He came to Waukegan with his wife, Martha Jo, a registered nurse, and their infant daughter, Rebeca. They resided at 2111 Butrick Street in Waukegan. The Assistant of the President, Illinois Synod, Reverend Eldred H. Trede, presided at his installation of July 9<sup>th</sup>. Sometime after his installation, the family moved to the rental Morris House at 817 Westmoreland.

March 16, 1976 was a difficult time for Pastor Tom and his family with the passing of their two-year-old daughter, Debbie Church. Shortly after her death, Pastor Tom and Martha Jo Church became involved in starting the North Shore Branch of the Compassionate Friends, an international organization offering friendship and understanding to bereaved parents who had lost a loved one. The group in Waukegan was first organized in January 1977 and Pastor Tom served as their president. He wrote: "We, as Compassionate Friends, offer our presence, our concern, our listening, our friendship, and our reassurance that any bereaved parent will not be left alone in their grief."

In one of his sermons, he preached our faith is not to "Keep the faith, baby," but to "Share the faith!" His ministerial theme was "Sharing the Love of Jesus." Pastor Tom was truly loved by all.

At the resignation of Senior Pastor Alden Salstrom on November 1, 1980, Pastor Tom followed by submitting his resignation to the church council on November 9<sup>th</sup>. His resignation would not take effect until Pastor Church received an official call from another congregation or from St. Paul's. Pastor Church continued in his duties as assistant pastor until he was installed as senior pastor of St. Paul's on February 15, 1981.

## **Advent Festivals**

St. Paul's Lutheran Church's first Advent festival took place on Wednesday, November 28, 1973, and was opened to the community from 2:00 p.m. to 9:30 p.m. Nothing was to be sold. The theme was "Love is Born at Christmas" and the event was put-together by the women. Exhibits throughout the church included "Old-Fashioned Christmas," "Contemporary Christmas," "Traditions from Other lands," "Candle Room," "Religious Art," and many more. The festival attracted well over 500 visitors that year.

Based on feedback from the prior year, St. Paul's women felt it would be well worth their effort to hold a second Advent festival and have it run for two days beginning November 24, 1974. The theme was "Advent - Let Us Prepare." Again, the festival was made possible by all the organizations and members of St. Paul's. That year a band made up of young people from the congregation performed. Under the direction of Mr. Fafarro, a music teacher from Whittier School, the musicians practiced together for that one event. The Advent festival surpassed all expectations by bringing over a thousand people to St. Paul's.

## **New Initiatives**

Dr. Samuel L. Keller, an esteemed physician at Victory Memorial Hospital, played a major role in the health and longevity of our church and its members. He took action at the church council meeting on January 9, 1964, recommending that smoking within the church and educational unit be prohibited. After long and thorough discussions led by Dr. Keller, the council voted unanimously to ban smoking within the church building. He also served the Illinois Synod in its social action and social service interests, and was able to prohibit smoking in all Illinois Lutheran seminaries.

Dr. Keller soon developed another passion within the church. First, a committee on gifts and memorials was established in April 1960. Then, on December 7, 1972, upon the gifts and memorials committee's recommendation, church council approved establishing a living memorials fund line item account under gifts and memorials. Dr. Keller enthusiastically championed the project. It wasn't until 1975 that the living memorials fund committee became a separate entity

from gifts and memorials, and adopted the guidelines proposed by Dr. Keller back in December, 1972:

“The purpose of this memorial is to provide our church with an opportunity to obtain living and lasting memorials to the glory of God and to the memory of the deceased that when they rest from their labors their works will follow them.”

The money designated for these memorials shall be strictly held as an endowment, prudently and conservatively invested by the church council or a designated committee (subject to the council’s supervision) with the principal kept intact and regular reports to the Church Council as from other departments of the Church. The dividends or earnings from the memorials may be used for any purpose or work connected with the church that the council may designate. In this way these memorials will, in effect, live perpetually to the greater glory of God.

A plaque shall be established to record in permanent form the purpose of the memorials and the names of those who will continue their work for Church and God after departing this life.”

The plaque inscription suggested by the memorial committee was as follows:

### **LIVING MEMORIALS**

To the Glory of God and the sacred  
Memory of these who have been called to  
The Church Triumphant.

“That they may ‘rest from their labors  
And their works do follow them” Revelation 14:13

“The plaque is approximately 4 ft by 2 1/3 ft. There are two rows of name plates, twenty in each row, forty in all. The plaque is so designed that wings or side plaques can be added at some future time, if needed. The cost of the plaque and its erection will be self-financed, not disturbing the Church budget. The cost of each memorial shall be a minimum of \$1,000 plus the cost of the name plate.”

It wasn't long before dissension occurred between the gifts and memorials committee and the living memorials committee. The latter thought all undesignated funds in connection with deaths should be considered living memorials. Pastor Salstrom quickly resolved the issue. After money was collected, the gifts and memorial committee would keep the funds until a decision was made by the family as to where it should go. The families would be thoroughly educated prior to making their decisions.

In May, 1980, at the magnificent bequest of the late Bertha and Frank Jelava, the living memorials received approximately \$50,000. By the end of 1980, the committee deposited \$100,000 from the living memorials account with the Board of American Missions.

### **Salstrom's 25<sup>th</sup> Anniversary at St. Paul's**



Pastor Salstrom celebrated his 25<sup>th</sup> year at St. Paul's on September 18, 1977. A special half-page article appeared in the "*News-Sun*" announcing the celebration and inviting friends to join the congregation at a four o'clock service at the church. One of the participants in the service was Dr. Paul Erickson, President of the Illinois Synod of the Lutheran Church of America. Later, on September 30<sup>th</sup>, an article in the newspaper attributed the church's growth to Pastor Salstrom's efforts. "But the 63-year-old minister won't admit his role in the expansion."





*A photo of St. Paul's taken on September 26, 1977*

## **Bethel Series**

In November, 1964, Mr. E. Hibbing sent a letter to council recommending a Bible study for St. Paul's adult education called the Bethel Series. Because the Bethel Series was best presented by pastors, he requested the council permit Pastor Salstrom to enroll in such a course and that provision for this be included in the 1965 budget. After much discussion, the decision was referred to a committee for their recommendation. Even with input from Pastor Blomquist who used the program at Trinity Lutheran Church, the committee's decision was to not take on the Bethel Series at that time.

In 1972, the Christian education committee began investigating participation in the Bethel Series. But once again, after proposing to go with the series in 1975, council tabled the proposal to allow consideration of a similar program developed by the LCA. Two years later, at a March 3, 1977 council meeting, Pastor Salstrom assigned the decision to Bob Sonders, chairman of the Christian education committee. The committee, with Dr. Daehler's assistance, chose to promote the Bethel Series, and on March 31, 1977, council approved the decision. A temple talk promoting the Bethel Series program was given on May 1<sup>st</sup> and a member from another church who had been on

the program spoke and was available to answer questions on May 8<sup>th</sup>. In its ballot on May 22, 1977, the congregation backed the committee's recommendation. Pastor Salstrom's response: "Oh, how I hoped it was approved and instituted!"

The Bethel Series was not intended to replace any existing Bible study group, but to supplement them. The congregation would enroll the pastors in a two-week orientation program in Madison, Wisconsin. When they returned, they would select a group of lay members as teacher trainees. The group would meet weekly for 2 ½ hour sessions for a period of two years. Then these teachers would lead adult classes, which met once a week for an hour. The 40 lessons would encompass part of the Old and part of the New Testament, and be presented in a way that laypeople could understand.

In 1978 the Bethel Bible Series came into full bloom, implemented by three liberal monetary gifts to send Pastor Church and Pastor and Carolyn Salstrom to Yahara Center, just outside Madison, Wisconsin, for two weeks of intensive study and training. In late summer, Pastor Salstrom led a class of fourteen Bethel students, half men, half women: Eleanor Anderson, Marilyn Christmas, Mervyn Daehler, Ronald Danielson, Karen Fude, Karen Hiner, James Keister, Thomas Love, Tina Nighsonger, Nancy Peterson, Odny Reckling, Robert Sonders, John Stamm, and Daniel Thorstensen, who later transferred from the church. Carolyn Salstrom also enrolled. The course covered the whole Bible, summarized in a series of paintings and concepts. The first class began on October 11, 1978 and required two years of study divided into six semesters, followed by a commitment to share in a two-year teaching role to those of the congregation that desired it. In the fall of 1980, over 150 adult members of the church were enrolled in five classes.

## **Our Tent Maker - Laura Blobaum**

(August 17, 1980 - June 21, 1982)

St. Paul's embarked on an exciting ministry that, while new to our congregation, was really as old as the New Testament. The apostle Paul was a tentmaker who supported himself while he moved from town to town in the Middle East establishing churches. A modern-day

tentmaker trained by Tentmaker, Inc. of Minneapolis, Minnesota provided us with a “tentmaker” in youth ministry. Tentmakers were young men and women who dedicated two years of their lives to a Christ-centered youth ministry with Lutheran congregations.

Before entering the Tentmaker program, our Tentmaker, 24-year-old Laura Jean Blobaum was a graduate of Pacific Lutheran University in Tacoma, Washington. Prior to entering the Tentmaker program, she was a pre-school teacher in Seattle. She arrived at St. Paul’s to work in youth ministry from August 17, 1980 to June 22, 1982. Among other things, Laura taught confirmation, sang in the choir, read lections, and helped with junior and senior youth. Her secular employment was as a teacher’s aide at Waukegan High School east campus.

## **Pony Express**

At every church council meeting during the 70’s, Pastor Salstrom discussed his concern about the decrease in church and Sunday school attendance, and worried about yearly decreases in pledged offerings. In 1977, only 172 families had pledged \$74,319 to support a budget that was expected to expend \$127,466. He encouraged the congregation to be more involved in church work.

In 1978, the stewardship committee searched for a stewardship program that would be effective and stimulating for the congregation. The committee, chaired by Bob Sonders, chose a Pony Express program styled after the famous mail relay system of the same name from more than a century prior. Bill Kilburn headed the campaign as general manager, and guided 13 station agents who in turn supervised 62 trail bosses. Other assigned positions included: a chief cook, Tom Love and staff; a finance chairman, John Hughes; a mail clerk, Clarence Hatfield and staff; a publicity agent, Ed Buschbacher and staff; two temple talk presenters, Richard Dreyer and Barbara Schultz; and a Sunday school coordinator, James Keister and staff.” Almost every household of the congregation took part in carrying the mail. The St. Paul’s Pony Express contacted 542 families, 354 of which showed their support of the church. In 1979, Bob Sonders took on the role of general manager initiative. That year with 120 workers, the Pony Express contacted over 550 families, 372 of which pledged support totaling \$167,217.

## The Ministry of Resettlement

In October, 1976, St. Paul's received a letter from the pastor of Chapel of the Cross Lutheran Church, Missouri Synod of North Chicago, asking for help in supporting a refugee family. This involved equipping a Laotian family for success in our society by helping them find work, and supplying food, clothing, furniture, and funds. The pastor also suggested that our church was large enough to adopt a family of its own. This led Pastor Church and the social ministry committee headed by Bill Brown, to visit the pastor and inquire their experiences with the Vietnamese family their congregation had adopted. In the following November church council meeting, Pastor Church presented a film strip prepared by the Lutheran Council in the U.S.A. on the adoption of a Laotian, Vietnamese, or Cambodian family. Following the film strip and remarks from the social ministry committee, the council unanimously agreed to ask the congregation to adopt a Laotian family. At a special congregational meeting on December 12, 1976, this project was narrowly defeated.

Two years later, St. Paul's received a letter from the Lutheran immigration refugee consultants of the Illinois Synod dated December 7, 1978 asking St. Paul's to consider resettling refugees. The objective of the resettlement ministry was to assist the refugee in becoming self-sufficient. In doing so, the role of sponsor changed into one of friend. The resettlement ministry was a unique opportunity to respond to the gospel message of Christ's love. So, once again, the topic of adopting a Laotian family came up. The social ministry committee, chaired by Jack Bregger, began working with a group from Trinity Lutheran Church to study the process of resettling a refugee family. This was a cooperative venture by the two churches. On May 20, 1979, St. Paul's, with co-sponsorship from Trinity Lutheran Church through the Lutheran Immigration and Refugee Service, had the opportunity to approve the resettlement of a refugee family. Many hands and many hours went in to preparing the congregation to support a refugee family as they entered a new culture and home. There were numerous brochures in Sunday bulletins and other mailings. The committee provided opportunities for the congregation to ask questions and become involved. This time, the resolution to sponsor a refugee family was approved, 147 yes and 27 no.

On July 31, 1979, the Si Vue family, comprised of father, mother, three daughters, and one son, arrived. The family resided with a member of St. Paul's, Virginia Rady, until suitable housing could be found for them. The joint St. Paul's and Trinity refugee committee helped clean and paint an old four-bedroom house on North Chapel Street, which the family were able to move into approximately six weeks after arriving. The Si Vue family severed ties with St. Paul's and Trinity in 1980 when they moved to Chicago to live among their own people.

## Choir Directors and Organists

As Bill Kilburn wrote: "We have been richly blessed with leadership and talent in the music department." Mrs. Marilyn Rowe Kutzler served as organist between the interim periods of late 1949 and June 1, 1950, when Mrs. Fenton Heninger accepted the position as organist and served through 1954. Mrs. Dan Martin followed as our organist for one year, leaving in 1955. Mrs. William Magden began as choir director in 1950 and ended her role in 1953.



1951 - with Aina Magden (director) and Mrs. Fenton Heninger (organist) - 1<sup>st</sup> Row, 3<sup>rd</sup> and 4<sup>th</sup> from left



*Mid 1950's – Marilyn Christmas (director) and Anita Brauer (organist)*

Mrs. Marilyn Christmas became choir director in 1954 and resigned in 1957. Mrs. Anita Brauer became our organist on World Communion Sunday, October 2, 1955, and added to this the responsibilities of choir director on March 3, 1957. She retired in May, 1972. Throughout this period of seventeen years, she gave generously of her time and talents to the worship life of the congregation. Mrs. Glenda Singiser succeeded her in that capacity for the next seven years. Our music director and organist, Mrs. Kathel Suttie, came to us on the first of January, 1980. Our 8 o'clock service organist, Del Peterson, eased in to this position during the 1970's.



*1977 Senior Choir (Glenda Singiser, choir director and organist)*

Special recognition must go to Marjorie Fredholm Jereb for serving as the soprano soloist at most special services during both Gallup's and Salstrom's ministries.

In 1944, the United Lutheran Church of America extended an invitation to other Lutheran churches in the United States to join in the production of a new service book. At a special congregational meeting on June 15, 1958, the congregation unanimously approved the recommendation of the United Lutheran Church to institute the Service Book and Hymnal of the Lutheran Church. Twenty years later, on April 30, 1978, the congregation approved the adoption of the *Lutheran Book of Worship*. It was placed in St. Paul's pews during Advent 1979.

## **A Temple Organ**

In 1977, St. Paul's established a new organ committee in hopes of having the installation and dedication of a new organ as part of the celebration of the church's 50<sup>th</sup> anniversary. Herb Seyring and John McFarland were co-chairmen of this committee, which was composed of a selection committee and a finance committee. Those members on the selection committee were Glenda Singiser, Del Peterson, Marilyn Christmas, Merl Peterson, and Bill Brown. Those on the finance committee were Don Moitzfield, Dr. S. L. Keller, Bill Kilburn, and Karen Hiner. They retained Professor William Roth of Carthage College as their consultant. The target date for installation was May 18, 1980.

On April 30, 1978, a special congregational meeting overwhelmingly approved the design and proposal of the Temple Organ Company of St. Joseph, Missouri for about \$60,000. The first payment, made in June 1978, accompanied the signed contract. The church needed to have the second payment of \$20,000 ready by October 1979. When construction of the organ was well underway, solicitation of funds began in earnest to make the organ debt-free upon installation. Total cost of \$62,475 was covered with a promissory note of \$19,500 given for the complete payment of the organ.

The Temple pipe organ was installed for its first use on Palm Sunday, March 30, 1980. Mrs. Kathel Suttie led the congregation to new heights in praise to our God with her gifted expertise in blending

the sounds of organ, choir, congregation, and instruments. The other organists and musicians, like Del Peterson and Glenda Singiser, enjoyed the new sounds and capabilities of the pipe organ. The electronic Hammond organ which served us so many years was now assisting in the church services at All Saints Lutheran Church in Byron, Illinois.

In celebration of St. Paul's 50<sup>th</sup> anniversary, we dedicated our new organ on April 20, 1980. Congregational son Reverend Daniel Brumm, Pastor of St. Stephan's Lutheran Church in White Bear Lake, Minnesota, was our guest speaker at the three Sunday services. The dedication took place during the 3 p.m. service which featured guest organist Dr. Roth.



*Kathel Suttie organist and choir director in 1980*

## **50<sup>th</sup> Anniversary**

### **Theme: "Forward with the Spirit"**

On May 15, 1930, St. Paul's English Evangelical Lutheran Church in Waukegan was started. Fifty years later, the church embarked on its golden anniversary celebration. And what a celebration the congregation gave themselves. Two sons of St. Paul's, Pastors Dan



Brumm and Carl Ecklof returned to help mark the year. Officials of the church, Dr. Erickson and Dr. Marshall, also came to join in the celebration. The events that occurred in the months of April and May included:

- Sunday, April 2 – Guest preacher: Daniel Brumm, son of St. Paul’s and pastor of St. Stephen’s Lutheran Church in White Bear Lake, Minnesota.
- Sunday, April 20, 3 p.m. – Organ dedication concert featuring Dr. Roth.
- Sunday April 2 – Guest preacher: Carl Eklof, son of the congregation and Pastor of First Lutheran Church in Princeton, Illinois.
- Sunday, May 4 – Guest preacher at the communion service: Alden Tormala, former assistant pastor of St. Paul’s, and current pastor of Faith Lutheran Church in St. Louis, Missouri.
- Sunday, May 11 – Guest speaker: Dr. Paul Erickson, president of the Illinois Synod. The event also fell on choir festival Sunday and Mother’s Day.
- Friday, May 16 – A “Happy Birthday” party was held in Fellowship Hall.
- Saturday, May 17, 8:30 a.m. – An anniversary breakfast was held at Swedish Glee Club. Guest speaker: Dr. Robert Marshall, former president of the Illinois Synod and the LCA and current president of Lutheran World Relief.
- Sunday, May 18 – Layman’s Sunday, centered on the theme “Forward with the Spirit” featured guest speakers from the congregation covering the history of St. Paul’s: Odny Reckling (Beginnings 30’s and 40’s); Herb Seyring (Building and Growth 50’s and 60’s); and Bill Kilburn (Forward with the Spirit 70’s and 80’s).

- A new congregational directory, without pictures, was being prepared for publication.

Of the festivities, Pastor Salstrom wrote: "All these things were fun and meaningful. But all of these things should be viewed not as what we've done, not as patting ourselves on the back, but as a heartfelt thanksgiving to what our Lord has allowed us to accomplish in His Name."

## **50th Anniversary Talk given on May 18, 1980**

### **Beginning 30's and 40's - Odny Reckling**

"Good morning. I was asked to speak today about the History of St. Paul's congregation from 1930 to 1950.

Today is a day of remembering. We look back not to glory in the past, but to know who we are and what God has done for us. We also look forward to the opportunities God gives us to be the family of God - always sustained by his love through Christ.

The early years of this church brings to mind a passage in Matthew. Christ is speaking to the Pharisees and he makes the strange statement - something greater than a temple is here. Jesus is telling them that through him, when a people become the body of Christ - the real church - that is where God is to be found. In the humble beginnings of any congregation, the church is definitely associated with being a people and not a temple. In 1930, the Reverend Paul J. Gerberding, a ULCA Field Missionary, met with a group of businessmen, working people, and immigrants at Whittier School to organize; how helpful the school and the community were to them. This group of Lutherans was distinguished not so much by their being full of faith as by the being faithful. There was a courage and steadfastness about them as they trusted God to make possible the organization of a congregation in the depths of a depression.

On May 15, 1930 St. Paul's Evangelical English Lutheran Church was dedicated as a mission with a charter membership of 51. A beautiful singer, Edith Keller, wife of Dr. S. L. Keller, was the soloist at the afternoon service and accompanied by Mrs. Luella Rowe, the

congregation's first organist. The original structure was a prefabricated building on the northwest corner of Lewis and Garden Place. May 1, 1931, the Reverend H. Paul Romeis, newly graduated from the Chicago Theological Seminary in Maywood, came with his beautiful but frail wife, Rosemary, to be our first pastor. As the congregation grew the entrance of the church was changed from the front to the side of building and with the use of folding doors, the sanctuary could be doubled in size. This early church was warm and beautiful in its simplicity - with its white altar, pulpit and lectern built by Jens Otteson, now deceased. Pastor Romeis was called to California and later became an assistant to a synod president there.

On December 1, 1936, the Reverend Edward Voorhees with his wife, Bernadine, and their three children came from Chicago to St. Paul's. They had a real love for the youth of the church, and their home on Waverly Place had an open-door policy, and I wonder today how Mrs. Voorhees put up with the youth always at her door. It was at this time that the men of the church dug a basement by hand - Pastor Voorhees included. This finally enabled us to get rid of that black pot-belly stove. The girls were glad to see it go, because there was always the danger of loosening a shoe to that fiery inferno by a teasing young male!

Every family of God has its dark periods and times which are difficult, and it was at this time the church sadly did not meet the needs of an ailing pastor. Mrs. Voorhees, in the spring of 1942, took her ill husband and her three children to Florida to build a new life for them all. I talked to Mrs. Voorhees on the phone. She is 84 and he is 85. She prayed for God's blessings upon our 50<sup>th</sup> anniversary!

The Reverend A. Howard Weeg, a graduate from the Lutheran Theological Seminary at Philadelphia came with his wife, Helen, on May 24, 1942 and served here for only one year. Pastor Weeg later became a president of the Illinois Synod.

In November, the Reverend Albert Simone, a young Italian seminarian from Chicago, came to serve us during the war year. Pleasure comforts he did not have, neither house nor car. But he served with warmth and compassion to both the young and the old. It was at this time that the congregation realized that they must make plans to build a permanent church building. On March 17, 1944, a gala St. Patrick's Day

congregational dinner was held and St. Paul's Church officially started the drive for a post-war church with pledges of \$3,000.

In December 1945, St. Paul's became self-supporting after receiving aid from the Mission Board of Illinois Synod for sixteen years. Pastor Simone has served many congregations since ours - with his wife, Helen, and always with a deep concern for social injustices.

On April 1, 1947, the Reverend Wesley Gallup with his wife, Mildred and their two children came from Pontiac, Michigan to St. Paul's. Pastor Gallup faithfully met the needs of his congregation. Even with paint brush in hand, purchased with the aid of Mr. William Seidemann, Pastor Gallup's father-in-law. In 1950, the church council met with Dr. Bowman to approve the plans for the new church. The war was over now and the building boom was in full force. Pastor Gallup accepted a call to Milwaukee, where he remained until his retirement.

Something greater than the temple is here - the people! I wish I could name all the individual people who gave of their strength and devotion in serving their Lord here in this congregation. But the call to be God's people is made to each generation, and each generation must respond."

### **Building and Growth 50's and 60's - Herb Seyring**

"My part of the program is to review the years from 1950 to 1970.

These were the years of growth and expansion at St. Paul's. It is not my desire to state a lot of dates when things occurred - directories and dedication booklets list these.

As a member of the parsonage building committee and chairman of the church and educational unit committees I would rather talk of things as they happened, with some dates outstanding.

In 1944 we decided we needed a new building, it was to be built after World War II, \$10,000 was raised. Our Pastor was Reverend Albert Simone.

In 1949 a parsonage was purchased at 15 N Elmwood Avenue for \$13,527. The annual church income was \$10,236.

In 1950, lots were purchased for the new church. We wanted two additional lots but did not have the \$3,000 required.

In December of 1950 the church council met with Dr. Elwood Bowman of the ULCA Mission Board and accepted the church design submitted to us. It was to be similar to but smaller than the one to be built at Wittenberg University. Our pastor at that time was Reverend Wesley Gallup.

In 1953 a new parsonage was occupied by the Reverend Alden Salstrom and his family. The parsonage was paid for with monies received from the sale of the Elmwood Avenue parsonage and sale of Snap-on-Tools stock, given to us by Mr. William Seidemann - he was the father-in-law of Pastor Gallup - and a mortgage. One of our members made up the difference in cost with an interim loan. The money for the new church was obtained through loans from the mission board, Cheltenham National Bank and Equitable Reserve Association of Neenah, Wisconsin and was deposited in Citizen's National Bank, Waukegan. Each councilman pledged \$1,000 if needed.

In late 1953 the new church building was started. There is no basement under the nave because we lacked the \$20,000 required. Two decisions helped enhance the present beauty of the building. First, to move the entrance 10 feet west in line with the houses to the south of us - this really became apparent when Lewis Avenue was widened. Second, the necessity to raise the floor level 18 inches to facilitate sewer drainage from washrooms.

Points of interest in the building: Radiant heat in the floor of the nave, electrical wiring for lanterns is on the outside of the roof. We were offered asphalt roofing, but opted for the more durable and beautiful tile. The steeple is covered with lead sheets of varying sizes and the cross with gold plating were the work of one man, Mr. Al Kraus of Kraus Sheet Metal of North Chicago. The lanterns were designed by one of my engineers at Cyclone Fence and were made by a friend of Pastor Salstrom's.

In May 1954 a worthy item appeared in our church paper, it said, "The present pastor, the Rev. Alden Salstrom came to St. Paul's in July 1952 and expects to stick around a while." First service in the new building was held on Palm Sunday, April 3<sup>rd</sup>, 1955 with Mrs. Peter Sneesby unlocking the door and leading Sunday school children into the sanctuary.

Memorial gifts of pews, lanterns, altar, windows, doors, etc. plus generous giving enabled the total cost of \$180,000 to be paid off in eight years. Original mortgages were as much as twenty-four years.

In July 1959 a campaign was started for a new educational unit. In December we purchased Trinity House on Westmoreland Avenue.

March 1962 authorization was granted to borrow \$240,000 from North Shore Savings and Loan. Ground was broken in November 1962 and the building was completed and opened for use in December of 1963. We requested the stone masons to use the same Lannon stone that was used for the church, it was to be from the same quarry in Wisconsin. It would appear that everything was built at the same time. Doing both buildings in the same decade was a terrific accomplishment and demonstrated the real spirit of St. Paul's.

The church was built on the basis of a thousand members, the educational unit was based on a maximum of 500 pupils. Folding doors as partitions were provided to take care of changing class sizes. Time does not permit mentioning everything that transpired during hours of discussion by the building committees, architects, contractors, and congregation members.

In 1969 the property now occupied by Pastor Tom Church and his family was purchased.

Two assistant pastors, Pastor Fred A. Milhouse and Rev. Alden Tormala added immeasurably to the spiritual life of the congregation during the 60's. St. Paul's has had and still has many friends outside our church family.

Our attorney was Mr. Marshall Meyer. Mr. Ted Fosberg of Citizen's Bank, William and Agnes Ivantic of North Shore Savings and Loan all worked with your committees in handling contracts and

disbursements. Architects and contractors were: For the church, T. Norman Mansell of Philadelphia, with Henry Ekstrand supervising architect, Richard Borregard was the contractor.

For the educational unit: Ekstrand, Schad and West, architects and Herbert Ruesch of Zion, general contractor. Stone masons were from Highwood, C. Fiocchi Co.

In conclusion: I wish to thank all those pastors and members I have known and worked with in the past and present. In the 41 years my family and I have been members of St. Paul's it has been our privilege to partake in the blessings, sacraments and friendships of this beautiful house of God. Again, thank you."

### **Forward with the Spirit 70's and 80's - Bill Kilburn**

"My role is to bring to you highlights from the 1970's and 1980's. These are the relatively current years with which we are most familiar. Please excuse me if I fail to include experiences important to you.

Early in the 1970's Pastor Tormala resigned as our assistant pastor to accept a call to Trinity Lutheran Church, Fort Wayne, Indiana and Pastor Church came after graduation from the Lutheran School of Theology at Chicago in 1972. Pastor Church, Martha Jo and their family have become an important part of our families, as has Pastor Salstrom, Carolyn, and their family. We joined with Pastor Salstrom in 1976 in celebration of his 25<sup>th</sup> anniversary as our pastor.

There have been important changes in our music department. We have been richly blessed with leadership and talent in the department for many years. Mrs. Anita Brauer, our senior choir director and organist from 1955, resigned in 1972. Mrs. Glenda Singiser succeeded her until 1979. Our present music director, Mrs. Kathel Suttie, came on the first of January this year. Our 8 o'clock service organist, Del Peterson eased in to this position during the 1970's. Both of them welcomed our beautiful new Temple pipe organ dedicated during this, our 50<sup>th</sup> anniversary.

The electronic organ which served us so many years is now assisting in the church services at All Saints Lutheran Church, Byron, Illinois.

Steps were taken to enhance the congregation's stewardship role. The living memorial fund was organized in 1975. Then in 1979 we were introduced to the Pony Express.

A task force was organized in 1979 to aid in setting goals for our future. Studies are progressing unhurriedly to permit time for ideas, thoughts, analysis and understanding.

In 1973 we had the distinct pleasure of experiencing our first Advent fest put together by our Lutheran Church Women. It is a most stirring experience each time it is brought to us.

Also, we have become accustomed to our chancel being adorned with beautiful symbolic banners provided by our fine arts guild. The guild was organized in 1975.

Worship services have been modified. In 1974 we introduced early communion for pre-confirmeds. Also, *The Lutheran Book of Worship* was placed in our pews in 1979.

Paving the way for our better understanding of the Holy Bible was begun in 1978 with the introduction of the Bethel Bible Series of training classes. The clarity of the Bible that comes with this teaching can reach all of us as teachers complete their training and classes are organized.

Church members continue to respond to expressions such as 3F dinners, Lake County Chaplaincy, social services, benevolences and similar expressions as we reach out to help. During 1979 our hearts went out in a special venture to the Si Vue family of father, mother, three daughters and one son, Laotian refugees. This brother-helping-brother project is shared joyfully with the members of Trinity Lutheran Church.

During this decade we have added new members; however, we should not and cannot forget those members who have passed on. Many were dedicated servants during their life time and in some instances left legacies in their will to ensure their support after they had passed on.



As we move into the 1980's we are aware of the foundation of our congregation. We are aware of the building of church structures and the growth of our congregation from 47 communing members in 1930 to 753 in 1979. Our maturity develops as our personal stewardship of time, talent, and other resources continue to be used with the enthusiasm and devotion demonstrated so well by so many working in the church, church schools and other organizations of the church. A fine example of this is the many who have so unselfishly given of themselves to bring to us the outstanding celebration of our 50<sup>th</sup> anniversary. This energy not only involved the planning, organization, and performance of the many programs, but also the many hours of manual effort to research records and to bring the fresh, newly-painted look to the many parts of our building.

Other fine examples can also be found wherein members working alone and in groups continue to perform miracles that we sometimes take for granted.

This giving indicates there is life in our congregation and that our congregation is alive.

Where are we going in the 1980's?

God has provided our spiritual basis.

God has provided the organization, facilities, and essential resources with which to do His work.

Let us not hesitate to continue to use them.

Let us not hesitate to continue to turn to Him, Jesus Christ Our Savior for our guidance in the future."

## **Excerpts from Pastor Salstrom's Sermon on May 14, 1978**

Two years prior to St. Paul's 50<sup>th</sup> anniversary, Pastor Salstrom gave a sermon that describes the history of our church and also depicts how poignant his messages could be.

“Throughout her history the Christian Church has had its ‘ups’ and ‘downs’, times of flourishing, increasing, and diminishing. Oddly enough, some times of greatest growth have been in times when followers were tortured, despised, and placed under restrictions.

That applies not only to the early church; it applies also in the lives and memories of some of those present. During the days of the depression of the 30’s the church flourished, and we found comfort and fellowship there. And when we came out of those days of the 30’s and early 40’s, especially after the interruption of World War II, that prosperity for the church continued for a time through the decade of the 50’s.

This present sanctuary came to be in those mid-50’s, a time favorable for church growth not only because building costs had not yet taken off, inflation had not yet made its deep inroads, but because the memory of how at man’s extremity there in depression days God found His opportunity to get through to us – well that memory lingered on.

Throughout the whole country the church was in boom times. We spoke of the goal of organizing at least one hundred congregations per year; and we came very close to doing it. St. Paul’s in one year alone, received over 200 members.

But when we came into the 70s, by ’71, for instance, throughout all denominations it was different. In 1971, only 11 congregations were born. And the cost of the first phase of establishing a new congregation, can you imagine, was up to a quarter of a million dollars.

And then in 1976 our Lutheran Church in America firmed its decision, “But it does not have to be that way. It can be turned around.” And so the church in convention assembled decided to undertake turning the tide. In addition to the 60 millions of dollars regular expenditures would require to raise for the purpose of turning the tide of strengthening the mission of the church with which we are charged, building new congregations, spreading out in the declaration of the Good News, raising an additional 25 million dollars.

Wouldn't you like to be able to say, when that turn around has been accomplished, "I had a part in that!" And God said, "Whom shall I send? Who will go for me?" And Isaiah answered, "Here am I; send me!" Today is such a special day."

## Pastor Salstrom Retired

Pastor Salstrom retired from the ministry on November 1, 1980. An open house reception in his honor was attended by over 400 friends on October 26<sup>th</sup>. On this occasion the church council presented him with a plaque naming him as *Pastor Emeritus*. This title was bestowed for his 28 years of faithful service in the ministry of the gospel of Jesus Christ to St. Paul's. In May 1954, a worthy item appeared in our church newspaper it read, "The present Pastor, the Reverend Alden Salstrom came to St. Paul's in July, 1952, and expects to stick around a while."

During his 28 years at St. Paul's, Pastor Salstrom estimated he had received 3,500 members into the congregation, conducted 1,700 baptisms, more than 1,000 marriages and 850 funerals. He lost track of how many sermons he had delivered. "Besides being blessed with the Holy Spirit," he said, "we were in the right place in the right time." Who knew at that time we were to be so blessed to have him with us for 28 years of his love and devoted service to Jesus Christ.

During their retirement Alden and Carolyn traveled through Europe and Scandinavia as well as the United States. After his "official" retirement, he served as an interim pastor with twelve different Lutheran congregations in northern Illinois, each for a few months to several years. As time allowed, he enjoyed playing a good game of golf. His "final" retirement was at age 80, only at Carolyn's request. On the eve of his 85<sup>th</sup> birthday, they moved into their newly-constructed home. *Pastor Emeritus* Alden L. Salstrom died on July 4, 2000, at Condell Medical Center in Libertyville, Illinois. He was survived by his wife of almost sixty years, Carolyn; three children, Janet, Susan, and Stephen; two granddaughters, Christine and Sandra; and one brother, David.

## Recollections of Pastor Salstrom - Robert Sonders

Now that I've presented Pastor Salstrom's accomplishments which made St. Paul's the greatness that it was during his ministry, I would like to present to you the man that I knew and loved.

It was back in August of 1965 when Diane and I and our two children came to Waukegan looking not only for a place to live, but for a friendly, hospitable place where our family could worship. Diane's mom suggested we go to "Salstrom's church." Pastor Salstrom was already known throughout the Chicago area - in this case for his work with Lutheran Home Finding (now known as Lutheran Social Services of Illinois). So we attended St. Paul's Lutheran Church and immediately felt it was the place for us.

Shortly afterwards, we had a visitor come to our home. It was none other than Pastor Salstrom himself. We talked for a while, and then out of the clear blue he spread out his arms and said "God bless this mortgaged home." We didn't have the heart to tell him the house was rented. This was our first and most memorable encounter with Pastor Salstrom. He came to our house to get acquainted. He came to make us feel a part of St. Paul's. He got us involved with church activities, and he got Diane to become a 5<sup>th</sup> grade Sunday school teacher. He was that kind of individual who would take that extra step or two to welcome newcomers to St. Paul's family.

Both pastor and Carolyn joined in all of the fellowship activities held at St. Paul's. There was first Friendship Club that started in 1947, then Kupl's Klub which began on July 2, 1972, and followed later by Pairs and Spares. There were Halloween parties and Pastor came as a lion and Carolyn a lion tamer. We went to plays, trips to Ravinia, we dined out, and we had numerous progressive dinners. We also went square dancing. Having Pastor and Carolyn in our dancing square was always a challenge. Pastor was so bad at following directions he made the rest of us look good.

Pastor enjoyed mixing with people and shaking their hands. There never was a time when he didn't come up with a joke or two. He ensured all of us would have a good time, and he set the stage for us to get to know one another.

I had the privilege to serve on the church council when Pastor Salstrom was at the helm. There was no such thing as casual dress in those days. We were expected to look and act the part of business people. Pastor was in control. You knew he was in charge.

Some pastors preached by telling stories; Pastor Salstrom gave his sermons in numbers. At the beginning of his sermon, he would tell us how many points of interest he wished to make and then proceeded, one, two, three, and so on down the line. There was great depth and thought to his sermons, and numbering his points made it much easier for all of us to follow.

He had a unique way of saying forgiveness. He would say "for-give-e-ness." Even today, when I hear the word forgiveness, I think of Pastor Salstrom instilling in our heart and in our mind that "God forgives our sins."

Pastor loved to sing in the choir. I always wondered if he and Dr. Jim Klima were competing against one another on who could bellow the joyous words the loudest.

Pastor Salstrom was a great teacher. There was a time when he devoted two years in teaching the Bethel Series to 14 adults, so that they in turn would spend two years teaching others. We covered the entire Bible from Genesis to Revelation. What a great endeavor; what a great accomplishment; what a great cause.

His ministry was by no means confined to adults. He loved to preach the good news to children. When the assistant pastor was preaching, Pastor Salstrom would often go into the Sunday school classrooms and talk to children of all ages. They looked forward to his coming. Diane told me that once he went into the primary class wearing his dazzling white robe – one of the children thought he was God. Maybe the child's perception wasn't too far off!

I taught the High school Sunday school class for nine years. The high schoolers were interested in learning about God and who Jesus was. We studied the Bible, Lutheranism, social interests, and even studied other religions and beliefs. The students had many, many questions. Often Pastor Salstrom would enter our classroom and join

in the discussion, answering their questions as he delivered his sermon, one, two, three.

Silver dollars were also a trademark of Pastor Salstrom's. He was known to generously hand out the silver coins to those confirmands who answered correctly the question from his infamous 150 part-questionnaire.

Pastor Salstrom will be remembered as a person who visited people in need, who enjoyed fellowship, who maintained a positive outlook on life, who shared the love of Jesus; and who faithfully and completely administered to the ministry of St. Paul's.

Most importantly, he will be remembered as a man who, for close to 60 years, deeply loved and cared for his wife, Carolyn. He was a man who was a loving and understanding father to his three children.

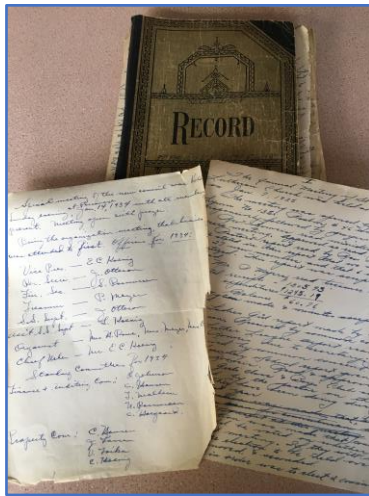


*Pastor Emeritus Alden Luther Salstrom*

## Acknowledgement of Major Resources 1930 - 1980

I am greatly indebted to St. Paul's past historians for the assembly and safe keeping of our historical records. Neil Peterson was appointed as our first church historian in August 1967, and served for two years. Herb Seyring, elected to this position on January 25, 1970, served for 29 years. Committee members who served during Herb's tenure were Odny Reckling, Margaret Sneesby, Edna Seyring, Marjorie Jereb, Clarence Hatfield, and Sue Salstrom. In 2004, Norma Mjelde was appointed as church historian and, in 2010, had the helpful assistance of Nancy Salmela. In the fall of 2014, I was appointed St. Paul's fourth Church Historian. I am so grateful for the opportunity to serve in this most interesting and rewarding capacity, and thankful to have Debbie and John Robinson, Becky Ingram, and Mary Ellen Modlin as active members on this committee, and to have Molly Fletcher join us as our gracious editor in preparing this document and making prose out of my writing.

When I became church historian, I found annual reports, confirmation pictures and pastor's pictures stored in large white three-ring folders. I also found sequestered thirty-five cardboard boxes articles of historical interest such as newspaper clippings; decaying scrapbooks; loose hand-written and bound (starting in 1947), council and congregational minutes; monthly newsletters which began in 1937; annual reports which began in 1943; and bulletins dating back to 1930. The process of storing all records in folders continued. My thanks go to Debbie and John Robinson for helping organize and store these records.



*Early church council minutes.*

We, at St. Paul's, are also indebted to Mabel Terry, a member of "Ladies Aid", and her daughter Mildred Terry, a member of "Adeste Fidelis" girls club, for preparing five scrapbooks loaded with *Waukegan News-Sun* articles that cover St. Paul's early historical events and activities. These articles are irretrievable today due to lack of archival and decaying microfiche stored in the public library. I am grateful to have talked to Margaret Sneesby shortly after her 100<sup>th</sup> birthday and share her memorable accounts during St. Paul's early years.



*Mabel Terry's Scrapbooks*



# Church Era

## Pastor Thomas S. Church

(February 15, 1981 – March 31, 2002)

Pastor Alden Salstrom retired as Senior Pastor of St. Paul's on November 1, 1980 having served since July 1952. This coincided with the 50<sup>th</sup> Anniversary of the start of SPLC (May 1930).



*Pastor Salstrom at his retirement with Pastor Tom*

Pastor Thomas S. Church was called to serve St. Paul's Lutheran Church in Waukegan as Assistant Pastor on July 1, 1972. Pastor Tom was born in Springfield, Illinois on March 8, 1946 to Alexander and Delores Church. He graduated from Augustana College in Rock Island, Illinois in 1968 and from the Lutheran School of Theology at Chicago in 1972. St. Paul's was his first call. Pastor Tom's wife Martha Jo, son Andrew and daughter Rebecca became active members of the church. Pastor Tom was installed as Senior Pastor of SPLC on February 15, 1981 at all three church services (8:00, 9:30 and 11:00) by Reverend Anton P. Weber, assistant to the bishop of the Illinois Synod, Lutheran Church in America.

The church had many activities in full swing in 1981. The Men's Fellowship Breakfast was held the second Saturday of each month. Guest speakers that year included Captain LeBow of the Waukegan Charter boat association discussing, "Lake Michigan Salmon Fishing" and other presentations including a slide presentation on yard, tree and garden care. The Food and Fellowship with Friends (3F) Committee served home cooked lunches to the senior citizens of SPLC and their friends on the third Monday of each month (\$1.50 donation accepted). Five Women's Circles (Esther, Mary Martha, Rebecca, Rachel and Ruth) were very active in the church. The Recreation Committee supported the men's 16-inch softball teams, a women's softball team and volleyball team, men's basketball team and men's bowling teams which all competed in the Waukegan Church Athletic Association Leagues. They also organized golf outings, canoeing, hiking, camping, swimming, tennis, biking, volleyball, badminton and other activities.

During most of Pastor Tom's years at St. Paul's the congregation held an annual church picnic and worship service at Van Patten Woods in the summer or fall. This required a dedicated group of volunteers, and in some years the weather did not cooperate but the event went on.

SPLC had a very active youth ministry, with the Senior Youth serving at the Shrove Tuesday pancake supper and the Junior Youth Group serving at the Easter breakfast. There was also a Beginner Youth Group. Sunday school had twelve different classes at 9:30 and 11 AM: toddlers, beginners, kindergarten, grades 1 through 8 and High School, plus a baby nursery. The 1981 Vacation Bible School was attended by 84 children, supported by 35 staff. Pastor Tom's first confirmation class as Senior Pastor had 20 confirmands on June 7, 1981. Twenty-four new member families and individuals were welcomed in April and May of that year.

## **Associate Pastor Richard Mannel**

(October 26, 1981 – March 1994)

In July and August, the church council was searching for a pastor to serve on staff. Two were identified but an experienced pastor (9 years) from Grandville, Michigan was the clear favorite. Pastor Richard Mannel and family (Gloria, Chris and Scott) attended all three services on August 30, 1981 to meet the congregation. St. Paul's was used to a multiple pastor ministry. A survey at the time indicated a need for an additional staff person for each 500 members. SPLC had about 2,000 members on the roles, and was one of the largest congregations in the synod. The call was extended to Pastor Mannel to serve as Associate Pastor on September 6 and he started at SPLC on October 26, 1981. He was installed on November 22, also by Reverend Anton B. Weber.



*Pastor Mannel*

In January 1982 long time organist and choir director Kathie Suttie left and several members stepped up to play the organ during services, including Pastor Tom. Del Peterson was hired as organist and Carolyn Anderson as Choir Director on June 1. On May 7 SPLC hosted the Mother-Daughter banquet "Strawberry Shortcake", with the men and older boys serving as waiters.

In the September 8, 1982 newsletter Pastor Tom wrote "The Lutheran Church in America (LCA), American Lutheran Church (ALC) and Association of Evangelical Lutheran Churches (AELC) voted simultaneously at their conventions to join in forming a new Lutheran church. If passed, the joint planning commission would work to have a constituting convention in 1987 and set January 1, 1988 as the date for the new church to begin to function."

In November 1982 the annual giving campaign was called the "Pony Express Campaign". Three hundred sixty-three members pledged almost \$200,000 for the coming year. More than 75 members participated in the campaign in various roles, including "Station Agents", "Trail Bosses", or by giving stewardship talks. The 1988 Stewardship drive was called the "Iron Horse Express" with conductors engaging with the congregation. At the end of 1982 a plan for starting a hand bell choir at SPLC requested \$3,699, with \$1,200 on hand by November.

Towards the end of 1982 SPLC planned and implemented a living manger scene for the Christmas season. The men of the church built the manger and stocked it with straw. Lighting was installed, and the ladies of the church created the costumes. Volunteers played the various roles on December 19, 22, 23 and 24, and even some live animals played their part, which required a waiver from the Waukegan City Council regarding the ordinance prohibiting the use of live animals. Hot chocolate, coffee and goodies were provided for the players. The last year of the Living Crèche display was 1999.

In February 1983 Pastor Tom went skiing with the youth group where he fell and broke his shoulder, having to explain why his one hand was under his robe. It was decided that month that the monthly "Big Mac" offering collected for the COOL food pantry would be divided equally with LCA World Hunger to help third world countries.

In June 1983 the Men's Fellowship breakfast sponsored a trip for 50 men and boys to Wrigley Field to see the Cubs play the Pirates. The ticket price was \$7.50 plus \$4.50 for round trip bus fare. The Fine Arts Guild continued to design and make altar banners, and looked to create an interpretive dance group.

The first Annual Music Festival was held October 16, 1983 with about 300 people attending. A call went out to find 16 “ringers” for the hand bell choir to perform at this event. All funds raised were designated to help pay off the organ.

From February to August 1983 St. Paul’s members supported a fund raiser to send Pastor Tom and Martha Jo to Germany for a 13-day tour (October 26 – November 7) of the land and places Martin Luther worked and studied, on the 500<sup>th</sup> anniversary of his birth. Later in November Pastor Tom was injured again at the confirmation retreat, suffering a broken heel and messed up ankle.

In January 1984, at the request of the Worship and Music Committee, the church council approved celebrating Holy Communion more often, including communion during each service on the first and third Sundays of each month, during all Festival services, and at special communion services on the third Thursday of January, March, May, September and November.

In March 1984 Pastor Tom started praying for each SPLC member individually and by name during the Sunday Prayer of the Church. He included six families or individuals each week, and planned to do it as long as it took to include all SPLC members.

In 1984 the congregation owned four properties that bordered the church – 812 N Lewis and 813, 817 and 827 Westmoreland Avenue. All homes were occupied by renters. In November 1984 the congregation voted to approve a parking lot proposal to create more parking spaces and to create a building committee to anticipate future needs and present proposals to the congregation. It was decided that homes at 817 and 827 Westmoreland would be removed to prepare that property for the parking lot. The work began in April 1985, was gravel (and mud) by the fall of 1985, and finally blacktopped in September 1986. The congregation voted to purchase the duplex at 1921 Garden Place in June 1987.

In June 1985 Karen Oglesby resigned as Sunday School Superintendent after four years of leadership. Lucille Robinson stepped in to fill the position, one she had held previously. A decision was made to stop having Sunday school at 11 am, and all teaching was

held at 9:30 am. Funds from the Music Festival in 1985 went to the purchase of new choir robes.

A special congregation meeting was called on December 22, 1985 to consider two proposals regarding functional building needs and current debt. The congregation approved a giving campaign to raise approximately \$300,000 to retire indebtedness from the new parking lot and current buildings (\$165,000) and to acquire additional property surrounding the church to have space for growth and parking (\$135,000). With money freed up from the annual budget debt service line (\$20,000/year), hire a new staff member in youth ministry or secretarial help. The congregation also approved the use of the services of Lutheran Laity Movement Fund Raising and Counseling Services to conduct a feasibility survey of the congregation (\$2,975).

In 1986 a computer was purchased for the first time at SPLC to keep our financial records. Also, in 1986 a beautiful wall mural was painted by volunteers in the downstairs hallway and Fellowship Hall. The mural included a side view cameo of many members, including Pastor Tom smoking his pipe. The council voted to co-sponsor Boy Scout Troop 50 at SPLC in April.

The Worship and Music Committee altered the worship schedule in June 1987 to have a Saturday worship service at 5:30 pm along with 8:30 and 10 am on Sunday during the summer. At a May 31 special congregational meeting, passed a resolution to pay Pastor Church a housing allowance like Pastor Mannel so he could buy his own house. An additional resolution agreed to provide him an equity sharing down payment loan of \$20,000. By November 15, 1987 the parking lot fund was totally paid off (\$38,000 paid off in 2 years, 8 months and 21 days).

As of January 1, 1988, the new Evangelical Lutheran Church in America was now a reality. A new bishop for the Metropolitan Church Synod of the ELCA was elected January 9, 1988. Pastor Tom described the history of our church in the context of this new organizational change in the 1987 Annual Report. "We have a different name now. No, we are still St. Paul's English Evangelical Lutheran Church of Waukegan, Illinois. But we do have a new name - a new alphabet or monogram. In fact, it is the third time such a name change has

happened. Back in 1930 when 51 persons signed the original charter for St. Paul's and called this congregation into existence, we were part of the United Lutheran Church in America (the ULCA). A part of the witnessing which the ULCA had in mind when sending out a mission developer to Waukegan was that Lutheran Christians could worship using the English language rather than German or Swedish which were the languages of other Lutherans in Waukegan at that time. Hence that is why the word "English" appears in our name to this day. It testifies to our history in this place."

"Up until 1960 there were all kinds of other Lutherans in this area with all kinds of names and monograms or alphabets. Such as: The American Evangelical Lutheran Church (AELC); The American Lutheran Church (old ALC); The Augustana Evangelical Lutheran Church; The Evangelical Lutheran Church (ELC); The Finnish Evangelical Lutheran Church in America (The Suomi Synod); The Lutheran Free Church; The United Evangelical Lutheran Church (UELC); along with our ULCA. All of these worked together to publish the Service Book and Hymnal (The Red Book). Then in 1960 several of the above formed the American Lutheran Church and two years later in 1962 we of the ULCA joined with Augustana, Suomi, and the old AELC to form the Lutheran Church in America (LCA). Thus our second name. Meanwhile, the Lutheran Church - Missouri Synod and the Wisconsin Synod as well as a couple of smaller groups continued as before. If it was confusing to be a Lutheran during the past few years when others asked to what group we belonged, LCA, ALC or Missouri (the big three), think how much more confusing it was prior to 1960 and 1962."

"In the decade of the 70's, a small group of Lutherans left the Missouri Synod to form the Association of Evangelical Lutherans in America (another or new AELC). These brothers and sisters (including Missouri at first) explored developing a new hymnal so that all Lutherans might worship using the same book no matter where they worshipped. The AELC also called us to form a new Lutheran Church. In 1982 during simultaneous church conventions the AELC, the ALC, and our LCA voted to form a new church. After six years of study and hard work and many compromises our new Lutheran Church came into existence. On January 1988 the Evangelical Lutheran Church in

America was born. We now have our third name and are part of the largest Lutheran denomination some 5.3 million members strong. As part of this church we are witnessing to the fact that Lutherans need not be divided. Together we can witness more effectively to Jesus Christ as Lord and Savior.”

The theme of the 1988 Congregational Growth Task Force was “Growing in Spirit”, representing the spirit in ourselves, the congregation and growth in the size of our congregation. St. Paul’s purchased its first snow blower in the fall of 1988 to help out the team of volunteer snow shovelers. In a special meeting on September 25, 1988, the congregation voted to purchase Garden Place from the city of Waukegan for \$9,000. In June 1989, the City Council decided not to sell the street as it was “not in the interest of the neighborhood”. They did agree to install “Two Hour Parking” signs on the street.

The ballot question for a special February 26, 1989 congregational meeting was “That SPLC, seeking to expand and renovate its existing facility, authorizes the Church Council to investigate and recommend to the congregation, for its approval, a means of raising capital funds.” This was the first step required to make the growth vision for SPLC a reality. Both Pastor Church and Pastor Mannel wrote that they recognized that this was a huge commitment that they prayed over, and planned to vote yes even though there would be some “fear and trembling”. Pastor Mannel wrote “how can a building designed for the programs of a congregation in 1955 and 1964 (the years the present church and educational unit were completed) be redesigned to fit the programs of that same congregation in 1989.” Growing in Spirit Victory Sunday was held on Reformation Sunday 1989, and Growing in Spirit envelopes were sent out in November with the regular giving envelopes.

St. Paul’s celebrated the 60-year anniversary of the church on Mother’s Day May 13, 1990. Bishop Hicks presided at the morning service, the banquet at the church was catered, and the Waukegan Brass Quintet performed. Pastor Tom and his family moved out of the parsonage in June 1990 to their own home. The parsonage was rented



to COOL ministries for use as transitional housing, as was one half of the Westmoreland duplex.

A special congregational meeting was held in June 1990 to vote on development of a plan to expand and renovate the church at a cost not to exceed \$1.79 million. Throughout the year discussions were held by the New Building Committee with the architects and builders. The original building plan included a three-story addition to the front of the education wing for classrooms and offices along with an elevator, in addition to the new sanctuary. The Worship and Music committee requested no carpeting, cushions or upholstery be included in the sanctuary in order to enhance the music and singing. The groundbreaking ceremony for the new sanctuary was held on October 28. Bids were received in four categories: sanctuary, office/education wing, entrance area and upper floor remodeling. Discussions continued to outline ways to reduce the cost of the new building plan. In a December 20 meeting the council approved the contract with Boller Construction to build the new sanctuary, handicap accessible bathrooms, new entrance and relocate the church office, and the contract with Gustav Fabry Sons Organ Builders to relocate the pipe organ, not to exceed \$1.2 million. In December the house south of the church was demolished.

Preliminary plumbing and electrical work were completed and the dismantling of the organ began in April 1991. During 1991 services were held in three different locations. The congregation left the old Sanctuary in the spring to move down to Fellowship Hall. A special congregational meeting was held on June 16 to authorize the repair of the arches in the present church nave at a cost not to exceed \$65,000. The furnishings for the sanctuary were delivered in October. The congregation moved into the new sanctuary in November and it was dedicated on February 16, 1992. The principal mortgage was \$775,000, taken out with the American National Bank and Trust in October. The new organ and sound system were installed in early 1992.

The Worship Service Task Force recommended in September 1991 to go to two worship services from three due to the increased size of the sanctuary. This change included having an educational hour for Sunday school and Adult Education between the two services. There

were many letters from church members opposing this plan regarding Sunday school timing so it was amended by the council to have concurrent education at one of the services. No action was taken on this proposal.



*Dedication of the New Sanctuary Cornerstone February 1992*

In 1991 a display with a picture of all council members was installed so all members could identify who the council members were each year.

Fourteen high school youth and four leaders attended the “Called to Freedom” youth convention in Dallas July 3-7, 1991. Many fundraisers were held, including the baking of 220 dozen cookies by the youth. Several other national youth gatherings were attended by SPLC high school youth. Nine youth and four adults attended the national gathering in Atlanta July 20-24, 1994. In July 1997 twelve of our high school youth attended the “River of Hope” youth gathering in New Orleans, making the trip by train. The “Dancing at the Crossroads” national youth gathering was held in St. Louis in June 2000, with 23 youth and four adults from St. Paul’s in attendance. Interim Pastor Mark Halaas attended the national youth gathering with our youth in Atlanta July 15-20, 2003.

In 1992 a very difficult decision was made to reduce synod benevolence from \$65,000 to \$32,200 to help offset the 1992 budget deficit. SPLC had always been a very generous giver to the synod, and though the use of special offerings the congregation actually gave \$49,750 to the synod that year.

The congregation was asked to suggest new names for the Narthex (old sanctuary) and in April 1992 the council chose Gathering

Room. In 1992 the coffee hour moved from the Library into the Gathering Room. This allowed for the expansion of the library with more shelving and furniture. St. Paul's had a very active Library Committee for many years. New books were purchased each year. The library had 967 books at the end of 1988, 1,205 at the end of 1992 and was up to 1,580 books at the end of 1996. At the end of 2001 the library had more than 2,200 books and 200 videos.

In September 1992 the Celebrate choir was formed. This choir sang at the 9:30 service and the Sanctuary choir continued to sing at the 11 am service.

In the fall of 1992, the Social Ministry Committee helped organize the start-up of a Saturday night PADS site. Prior to this the Women's Circles had provided meals and supplies to other churches that were PADS sites. The committee recruited volunteers for staffing and meal preparation. The site was open each Saturday night from 5 pm to 7 am, from October through April. Some nights there were more than 70 guests at our site. More than fifty members of SPLC participated throughout the years in one capacity or another, with additional support from other churches in providing meals. We also benefitted from the support of groups of recruits from Great Lakes Naval Base each week. The site closed in April 2001.

In 1993 the property team purchased 815 Westmoreland, sold the duplex unit at 901 Westmoreland, sold 1924 Garden Place, and sold the Parsonage at 900 N Lewis. In January 1994 they removed the house at 813 Westmoreland and in December 1995 removed the house at 815 Westmoreland to expand the parking lot and build a garage. The parking lot addition was complete in November 1996.

## **Associate Pastor Carol Wasemiller**

(October 8, 1995 – June 11, 2000)



*Pastor Carol*

Pastor Mannel left St. Paul's in March 1994 when he received a call to be Senior Pastor in Omaha, Nebraska. A call committee was established to develop the required documentation for the synod and begin the search for a new Associate Pastor. The call committee recommended Pastor Carol C. Wasemiller and the council met with her May 15, 1995. In a special congregational meeting on June 18 Pastor Wasemiller (husband Reini) was called to serve as Associate Pastor. She started in August and was installed October 8, 1995. Pastor Wasemiller graduated from Carthage College and taught high school math for twenty years. She completed her studies at the Lutheran School of Theology Chicago and was ordained in June 1988. Prior to coming to St. Paul's, she was an Associate Pastor at Messiah Lutheran Church in Wauconda and an Interim Pastor at St. Matthew Lutheran in Itasca.

In March 1995 Council established "Sharing the Love of Jesus" as the mission statement of St. Paul's. In a special congregational meeting in April the congregation voted against the installation of an elevator in the education wing at a cost of \$150-300,000. In July the congregation approved the purchase of the home at 808 N. Lewis and rent it to COOL for transitional housing.

## **Intern Pastor Janet Miller** (July 1995 – October 2002)



*Pastor Janet with Debra Young*

In March 1995 Pastor Tom interviewed five candidates for an intern position at SPLC. Council approved the hiring of an intern minister at the April meeting. Janet Miller (husband Greg) from the Lutheran School of Theology in Chicago started at St. Paul's in July 1995.

In 1996 Pastor Janet became the Director of Lay Ministries at St. Paul's to help members discover their God-given talents and to help them find that area of service for which they have a passion. A committee was developed to support this effort. Pastor Janet left St. Paul's April 1, 1997 when her husband Greg took a position with a company in Fort Worth, Texas. She was seeking a call to serve in that area. She returned to St. Paul's in October 1999 as Associate Minister. The two lay leaders resigned their positions in June 1999.

In 1996 the Worship and Music committee began incorporating the entire worship service into the bulletin in printed form to make it easier for the congregation to follow along during the service.

In January 1997 the constitution of SPLC was change from having a church council of 18 members to “Council shall consist of no fewer than 12 members and the Pastors”. Also, in 1997 a group of men from the church began participating in local Habitat for Humanity projects.

In July 1999 council approved a proposal brought by the Outreach Committee to work with the YWCA Childcare program by providing space for before and after school childcare. The contract was signed March 13 and the site opened in June 2000 to serve children K-5<sup>th</sup> grade.

In 1998 several youth attended Leadership Lab in Augustana for the first time, and in 1999 three youth returned along with four first timers.

In 1999 Lutheran Men in Mission team established a monthly Habitat for Humanity workday on the third Saturday of every month. St. Paul’s was involved with Victory Memorial Hospitals ElderCare program. More than 175 elderly homebound neighbors were served by 200 trained volunteers, including twelve SPLC members.

Starting in November and in the spring of 1999 a Memorial Garden task force along with the office of Lay Ministries developed a plan to create a Memorial Garden as a devotional, meditative garden where cremains may be placed on the property south of the church. The proposal included privacy fencing and gates, altar, markers, plaques and seating along with landscaping and lighting. Early cost estimates were \$95,000 - 140,000. No action was taken.

Pastor Carol resigned from St. Paul’s on May 12 and left June 11, 2000 after serving as Associate Pastor for nearly five years. St. Paul’s hosted the Lutheran Men in Mission Conference on Saturday July 22, 2000. SPLC was chosen to be one of four sites in the US to host this event titled “Building a Legacy of Compassion.”

Ellen Montgomery was hired as the Music Director in January and started in May 2001, relieving Pastor Tom and Del Petersen from this responsibility. A decision was made by the Worship and Music Committee to continue the summer schedule throughout the year (5:30 pm Saturday and 8:30 and 10:00 am Sunday), but a survey of the

congregation rejected this plan and we went back to three Sunday services in the fall. Also, that year the intermediate students (Grade 3-5) began attending the first portion of the 9:30 service (approximately 15 minutes) before going downstairs for their classes in order to give them the opportunity to participate in the children's sermon.



*2000 Sunday School Staff*

In July 2001 twelve members of the senior youth and four chaperones made a challenging weeklong trip to canoe and camp at the Boundary Waters north of Ely, Minnesota.

The council authorized funding in September 2001 to create the first website for St. Paul's. When PADS ended in April 2001 the old partition was removed from Fellowship Hall and the entire downstairs area was painted. A new island was installed in the kitchen in early 2002.

On January 24, 2002 Pastor Tom announced his resignation from St. Paul's, effective March 31. He accepted a call at Gloria Dei Lutheran Church in Leesburg, Florida to be near his aging parents. He served there for ten years until his retirement in October 2012. A farewell dinner for Pastor Tom was held February 24 at Bonnie Brook Country Club, followed by a Farewell Sunday on March 3. Pastor Tom passed away on January 5, 2013 in Tampa, Florida. A memorial service for Pastor Church was held at St. Paul's on January 27, 2013.

A call committee was installed on Reformation Sunday 2001 to begin the call process for a third pastor following the departure of Pastor Wasemiller. This effort was put on hold following the resignation of Pastor Tom. A congregation meeting was held on March 17, 2002 to discuss the path to call a new pastor.

## **Interim Pastor Mark Halaas** (May 2002- September 2003)

Pastor Mark Halaas was called to serve as Interim Senior Pastor in May 2002. He started in mid-June and was installed July 14. Pastor Mark wrote his first epistle for the June newsletter. Pastor Mark came to SPLC from being Interim Senior Pastor at Norway Lutheran Church in Racine County, WI. His wife Gwen was a Family Physician and served as a Project Director for the ELCA Health and Wellness Program based at the Lutheran Center in Chicago. Pastor Mark and Gwen moved to Kenosha in the summer of 2001 from the Twin Cities. They have three adult children Per, Liv and Erik.



*Pastor Mark Halaas at 2003 ELCA Youth Gathering Atlanta, Ga*

Pastor Mark graduated from Concordia College in 1973 and Luther Seminary in 1986 after working in higher education resource development at Boston University. His dad and two brothers are



ELCA pastors. Pastor Mark was instrumental in guiding St. Paul's in the establishment of the Mission Endowment Fund in August 2003, which provides funding to a variety of local, national and international missions from annual interest payments from Mission assets.

After several years of discussion, Pastor Janet and the council was actively working in 2002 to hire a Youth Director, pursuing leads from Lutherdale and Concordia College, but no action was taken. Pastor Janet submitted her resignation letter in October 2002 to pursue a call in the Milwaukee area.

The carillon bells to be installed near the base of the steeple arrived in September 2002. The cost and installation of the bells was funded by designated memorial funds and additional member gifts. The bells were fully installed November 19 and began ringing November 24. Notifications and invitations to the December 1 dedication service were mailed to homes in the neighborhood. The property team proposed in October to replace the carpeting in the Gathering Room and the Sanctuary. A carpet fund was started to raise the \$15,000 for the project.

A Mission Profile Team called the St. Paul's Profilers was organized in 2002 to complete a Mission Profile Document to be used in the call process for a new Senior Pastor. This document described our congregation's history, ministry, membership, community and leadership needs. Member surveys were completed and shared with the congregation December 8, 2002, and a call committee was installed on January 16, 2003.

# Satre and Davick Era

**Pastor Caroline L. Satre and Pastor Brad W. Davick**  
(September 9, 2003 – July/November 2018)

Pastor Caroline L. Satre and Pastor Brad W. Davick were called to St. Paul's on September 9, 2003. The process began in March 2002 with the resignation of Senior Pastor Thomas S. Church. The Church Council received over 60 nominations for Call Committee members, of which 30 agreed to serve if appointed. On January 19, 2003, the Call Committee of Jason Aaron, Linda Asma, Len Dahlbo, Betsy Fletcher, Carol Grom (chair) and Betty Kilburn were installed. Alternate members Glenn Rickel and Elise Helland were installed as well.

Pastor Caroline, who preferred to be called PC, grew up in Indiana. Her father and grandfather were also Lutheran pastors and PC proudly wore her grandfather's clergy robe for services. Pastor Brad, known to all as PB, grew up in Minnesota and North Dakota. His father was also a Lutheran pastor. PC and PB met at Luther Seminary in St. Paul, Minnesota. PB was a recently divorced banker with two small children. One night during a particularly harrowing breakdown, he was led to enroll at seminary. He often shared his experience of being called by the Holy Spirit with his confirmation students. Following seminary graduation, PC was call to Our Savior's Lutheran Church in Naperville. PB soon followed to begin his ministry there. They married while serving at Our Savior's. Possessing different gifts and styles between the two of them, they blessed their congregations by being able to serve with such diversity and breadth.

Following installation at St. Paul's, the pastors participated in 13 informal gatherings, focusing on the theme, "What Dreams May Come" in an effort to get to know the congregation. 2004 kicked off preparations for St. Paul's 75<sup>th</sup> Anniversary on May 15, 2005. The Lenten Theme for 2004 was *L200*, with an emphasis on establishing Small Groups in members' homes for study and fellowship during Lent. The book, Reclaiming the L Word, by Kelly Fryer was the basis for the study.

2005 included a number of events to commemorate our 75<sup>th</sup> anniversary: A Bucket Brigade fundraiser, Wedding Vow Renewal Dinner and Dance, Penny Supper and Radio Show, Mystery Dinner, and a 70's Progressive Dinner. The anniversary was celebrated the weekend of May 13-15, 2005 including a worship service and dinner. Previous St. Paul's pastors Tom Church, Rich Mannel, Carol Wasemiller, and Janet Miller all participated in the festivities. The first Marty Awards were inaugurated.

The Five G's-Grounded, Gathered, Growing, Giving, Going-were introduced in March 2005. Changes to the confirmation program, Head to the Heart (H2) were initiated in Fall 2005. Two hand-crafted altar chairs from Thompson Furniture Company in Kilburn, England were gifted by Bill and Betty Kilburn. In December 2005, the pastors began the process to adopt a child from China.

Highlights in 2006 included the Lenten Small Group study, If You Want to Walk on Water, You've Got to Get Out of the Boat by John Ortberg. In the Fall, the Council and Leadership prayerfully considered next steps for St. Paul's. The three options under consideration were **Remain**-essentially continuing status quo, **Retool**-a focused effort to revamp programs and facilities, or **Relocate**-move St. Paul's physically to another location. After much discussion, the decision was to **Retool**. A Retool Retreat was held in November 2006. From the November retreat, Reformation 2010 was born. Efforts included:

- Complete and Implement the G5 Structure
- Make Our Church Property More Inviting (Capital Improvements)
- Explore Ministry Partnerships
- Develop a Website
- Promote Adult Spiritual Growth
- Parish Nurse Ministry

The Lenten Small Group study was "*Real Faith for Real Life.*" In July 2007, a group of 15 went to Braga, Portugal as part of a Habitat for Humanity project. Leadership participated in an externally facilitated program, *Crucial Conversations*, to improve overall communication

with each other. The church website went live on October 15, 2007. A formal partnership with Whittier Elementary School, our neighbor across Lewis Avenue, was established.

2008 brought more changes, including the adoption of Elizabeth (Ellie) Bo Satre on June 1, 2008. The pastors were notified on April 7, 2008 that Ellie was waiting for them at the Poyang County Social Welfare Institute in the Jiangxi Province of the People's Republic of China. Prior to the adoption, Pastor Brad has secretly asked members for swatches of fabric that were used to create a "100 Wishes Quilt" to surprise Pastor Caroline as they prepared for their child.



*Welcome Ellie Party*

Extreme Makeover was in full swing in 2009. Several building improvements were started including preparation to install a three-stop commercial elevator in the education wing. Despite the funds raised for Extreme Makeover, the operating budget experienced a deficit of over \$39,000. The Adult Spiritual Growth Team sponsored a World Religion series, Labyrinth Walks, Compline and a Women's Retreat in addition the Small Group Lenten study "Noomania."

2010 highlights included the completion of Extreme Makeover with \$235,000 raised. Many projects, including painting several public areas, updating the kitchen with new appliances (thanks to a generous donation from Grand Appliance and TV), new library furnishings, and

the three-stop commercial elevator were completed. Partnerships expanded with the addition of Lake County United and Waukegan to College. We engaged with Dave Daubert from A Renewal Enterprise (ARE) to tackle church structure strategies. Several St. Paul's members enjoyed a trip to Germany to attend the Passion Play in Oberammergau. Dave Fletcher and Mary Ellen Modlin retired from leading Angel Choir after 17 years, with Margie Burba carrying on a modified version. Operation budget challenges continued with an annual deficit of \$33,684.67.

With assistance from ARE, an umbrella strategy was created in 2011 including a new Mission Statement, "To Journey with Christ, Each Other, and the Neighbors God Gives Us." Guiding Principles and Strategic Directions were also identified and adopted. The Lenten Study *Faith and Doubt* was based on the book, Know Doubt by John Ortberg. In partnership with Waukegan to College, 2 students attended Leadership Lab at Augustana College. A new partnership was established with Iglesia de Cristo, a Spanish-speaking Pentecostal Church who rented space in Fellowship Hall. A liaison team between the two the churches identified commonalities and community opportunities we could share. The two churches, with assistance from United Way of Lake County, sponsored an Early Learning Clubs site.

An onsite retreat facilitated by Dave Daubert from ARE was held to make financial decisions for a large benevolence from the estate of Betty Kilburn. After much discussion, a consensus agreement was reached to distribute the gift into the following funds: 30% to debt reduction, 30% to operating cushion, and 40% to new ministry initiatives.

2012 highlights included several Adult Spiritual Growth opportunities including the Lenten Study, Made for Goodness by Desmond and Mpho Tutu; Adult Confirmation series-The Lord's Prayer; Exploring World Religions-Mormon. St. Paul's also hosted the Minnesota High School group, New Wine. Led by Sue Koesser, the Human Resources team implemented a Safe Haven policy requiring background checks for all staff and volunteers who work with youth, elderly and disabled persons. Whittier School invited us to join with them in the national program Kids Hope USA. 15 members from St.

Paul's served as mentors for Whittier students. 10 Waukegan to College students and 3 St. Paul's students attended Leadership Lab at Augustana College. A new Communications Team was established with the goal of regularly utilizing social media. Despite all these efforts, Sunday School attendance continued to decline, and our operating fund experienced another large year-end deficit of almost \$40,000.

2013 continued with several Spiritual Growth opportunities including: The Men's Silent Retreat at Bellarmine Retreat Center; E100- a yearlong challenge to read and study the Bible's 100 most essential passages; Lenten Study "*O Taste and See that the Lord Is Good,*" based on the five senses. Outreach focuses continued with Kids Hope USA, and sending 16 Waukegan to College students and 7 St. Paul's students to Leadership Lab. Colin Byers introduced our congregation to Trunk or Treat, inviting neighborhood children to trick or treat in our parking lot. We co-hosted the first Waukegan to College Oktoberfest fundraiser with three other ELCA area churches to raise funds for participation in Leadership Lab.

2014 continued with similar programs and focuses. Continuing to see a decline in Sunday attendance, particularly at the later service, we experimented with shifting the service from a contemporary music emphasis to a "retreat" style of worship. Sunday school was modified as well. While our funding challenges remained, our operating deficit of \$12,000 was partially offset by legacy funds from the Kilburn estate. Our partnership with Iglesia de Cristo ended as they purchased their own church building on North Lewis Avenue in Waukegan. Judi Hall retired as the Office Administrator. Mary Ellen Modlin began as Office Administrator and focused on automation, adding the ability to give donations and receive statements online. Email member communications were streamlined utilizing existing database software. To save postage, the monthly newsletter was no longer mass mailed. It was emailed and posted on the church website, with hardcopies available at church. Thirty Waukegan to College students attended Leadership Lab. Our Lenten Study, "*What's So Good About Good Friday?*" was tackled by several thriving Small Groups.

2015 highlights included more focus on Spiritual Growth with the Lenten study, “*Conversio*” based on the writings of St. Augustine. A yearlong emphasis on the liturgical year was the theme of Sunday worship. The 10:30 worship service was further tweaked to shorten the worship to 30 minutes and add more learning time for children and adults. 23 adults from St. Paul’s traveled to Turkey. A highlight from that trip was Pastor Caroline reading St. Paul’s words at the ruins in Ephesus, Turkey. 40 Students from Waukegan to College and St. Paul’s attended Leadership Lab. Finances improved as decisions were made to reinvest funds with the ELCA Pooled Trust, pay off our existing mortgage from internal funds, and invest some funds in an Edward Jones Mutual Fund. The budget deficit, with the help of the legacy gift, was \$0 for the first time in many years. We hosted LYRA, an acapella group from St. Petersburg, Russia and provided free tickets to Waukegan to College and Whittier students and their families. We began another rental relationship with a new English-speaking Pentecostal church, Christ House Church.

2016 brought a second rental church, another Spanish-speaking Pentecostal church, Iglesia Fuente de Vida, which quickly filled the Oriole Window Room on the second floor on Sunday mornings. Over 40 Waukegan to College and St. Paul’s students attended Leadership Lab. Spiritual Growth highlights included studying Don Miller’s Blue Like Jazz during Lenten and Adult Confirmation. The worship theme for the year was Luther’s Small Catechism. We hosted the AGAPE Singers, a high school group from Dawson, Minnesota. The 12<sup>th</sup> Annual Church Rummage Sale took place. Adrienne Elbe took the reins as Office Administrator. Although we again had \$0 budget deficit, we were challenged by broken pipes that flooded the basement and required expensive repairs of \$15,000, in addition to insurance coverage. An outpouring of member financial support covered the expense in record time.

2017’s Lenten Study was *(Not So) Simply Christian*, based on N. T. Wright’s book, Simply Christian: Why Christianity Makes Sense. 19 adult members of the congregation were confirmed in May 2017 to celebrate the 500<sup>th</sup> anniversary of the Reformation. It was also the first year in many, many years that there was no 8<sup>th</sup> grade confirmation class.



*Adult Confirmation Class 2017*

In summer 2017, Pastor Caroline accepted a call as Senior Pastor to Christ the King Lutheran Church in South Bend, Indiana. She presided at her last service at St. Paul's on Sunday, July 30, 2017, followed by a wonderful party on the lawn to celebrate her time with us. In November, Pastor Brad received a call as Associate Pastor to Christ the King Lutheran Church and joined PC and Ellie in South Bend after Thanksgiving. His last service at St. Paul's was Sunday, November 26, 2017.



*Collage of images from the mural in the basement for the PC and PB goodbye celebration*



**Interim Pastor Janet Volk**  
(October 15, 2017 – October 15, 2018)



*Pastor Janet*

Following the resignation of Pastor Caroline, the Chicago synod recommended that we move forward with engaging an interim pastor to help us in our transition to call a new pastor, even before Pastor Brad would be leaving. Pastor Janet Volk came to St. Paul's as a very experienced interim Pastor. Following a career as a healthcare administrator, she earned her Master of Divinity at Lutheran School of Theology at Chicago in 1999. Prior to coming to St. Paul's, she served at seven different congregations in the Chicago area, including three as an Intentional Interim Pastor.

Pastor Janet commuted from Chicago to Waukegan during the year, and in addition to leading services and attending congregational meetings she was very good at visiting our shut-ins and hospitalized members frequently. Pastor Janet was quite the project manager, as she had a spreadsheet of activities that the congregational council and congregation needed to address to prepare our church for our new pastor. At her urging the council updated the church constitution and reviewed our financial and human resource policies and practices. Pastor Janet also supported the transition team to complete the Ministry Site Profile documentation required for the call committee to seek out our new pastor. The call committee recommended Pastor Mark Rollenhagen to be our new pastor and the congregation approved this call at a special meeting of the congregation on August 12, 2018.

# Rollenhagen Era

## Pastor Mark Rollenhagen (October 15, 2018 - Present)

Pastor Mark Rollenhagen began serving St. Paul's in October 2018. Pastor Mark is passionate about strengthening and expanding Lutheran proclamation of the Gospel in changing communities. He has enthusiastically supported and strengthened existing ministries including COOL, Whittier Partnership, Waukegan to College and PADs. He continues to challenge St. Paul's to engage more intentionally with our community. Many congregation members have participated in free Spanish classes, joint services with our neighbor Lutheran Spanish speaking church including Las Posadas at Christmas time, attending school board meetings to support a health clinic at the high school, Clothes to You ministry, becoming an election site, and participation in numerous economic, environmental and immigration issues that impact our community.



*Pastor Mark*

Prior to his call at St. Paul's, Pastor Mark served as a pastor and ELCA redeveloper for seven years in the inner ring Cleveland suburbs of Lakewood and Rocky River, Ohio, leading the creation of Good Soil

Lutheran Ministries through the consolidation of Faith and Our Savior's Lutheran Churches.

Before becoming a pastor, he was a reporter, editor and statehouse bureau chief for *The Plain Dealer*, Cleveland's daily newspaper. Prior to that, he was a reporter at newspapers in west Michigan; Harrisburg, Pa., and Toledo, Ohio.

Pastor Mark attended Trinity Lutheran Seminary, initially part-time, while working as the Columbus Bureau Chief for *The Plain Dealer*. He received a Master of Divinity in 2011 and was ordained by Bishop Elizabeth Eaton.

Pastor Mark and Alison, his wife, contemplated considering a call in the Chicago area after the birth of their granddaughter, Addie Mae, who moved with her parents to Oak Park, Illinois in Summer 2018.

Their daughter, Emma Worringer, is a physician at PCC Community Wellness Center's clinic at Steinmetz High School in Chicago. Their son-in-law, Eric Worringer, is the pastor at Holy Family Lutheran Church in the Cabrini-Green neighborhood of Chicago. They also have a son, Peter, who is an analyst for Majestic Steel Company near Cleveland.

Pastor Mark grew up near Grand Rapids in west Michigan. He is an avid baseball fan and plays golf poorly but still enjoys it. His teams are the Cleveland Indians and Detroit Tigers. When he moved to Waukegan, he began rooting for the Chicago White Sox, too. The Chicago Cubs are a sore subject, due to the outcome of the 2016 World Series.

Alison was a program manager for the Cleveland Clinic when they lived in the Cleveland area. She now enjoys caring for their granddaughter a few days a week.

## **Intern Pastor Ashley Rosa**

(July 2019 to July 2020)

Ashley Rosa began serving her pastoral internship at St. Paul's in July 2019, following completion her second year of classes for a Masters of Divinity degree at the Lutheran School of Theology at Chicago. Ashley is from Clive, Iowa, a suburb of the Des Moines area. Her undergraduate degree is from Wartburg College where she studied religion with a concentration in youth and family ministry and minored in Spanish and writing. After graduation from Wartburg, Ashley served with the ELCA program Young Adults in Global Mission (YAGM) for a year in Phnom Penh, Cambodia. Upon returning to the United States, she entered seminary.

Ashley's interests include learning languages, music, watching movies, and photography. She also enjoys taking walks and cooking with her fiancé, Dalton, who is studying to be a Lutheran pastor as well. His internship is in Kenosha, WI and includes Campus Ministry at Carthage College. Ashley always wears two bows: one in her hair and one on her engagement ring.

Ashley was certainly blessing for our congregation. Her communication skills and Sunday morning messages were very well received. She led the Wednesday morning Bible study and was instrumental in starting GodWauks with Pastor Mark, where a group of individuals hiked in a local forest preserve on one Saturday a month to share the Word with nature. Ashley created the Lenten small group discussion material, "Word, Not Weapon: Unweaponizing the Bible in our Lives". Unfortunately, the small groups were only able to discuss the material for two weeks prior to the closure of the church.



*Ashley at the Blessing of the Pets event*

Pastor Mark has a passion to minister to the congregation as well as to our neighbors in Waukegan. With the advent of the Covid-19 pandemic and recommendations from health officials, St. Paul's church building was closed on March 15, 2020. Pastor Mark encouraged the congregation to stay connected to the church through "Pastor Mark's Study" on Facebook, and he also sent out daily devotionals to be read at 12:30 each day. Pastor Mark and Ashley, along with Ellen, Emily and members of the choir, created a youtube Sunday morning service each week, and established a Zoom meeting for members to call in following the service to stay connected.



*Zoom Choir Practice*

Pastor Mark, working with Chef Clay Erickson and the folks at Roberti Culinary Pathway, distributed meals to needy Whittier School and Waukegan to College families each Tuesday. St. Paul's members also met each Tuesday to distribute of boxes of produce from Northern Illinois Food Bank for our neighbors from our parking lot.



*Pastor Mark and Alison distributing food during the pandemic*

The timing of the pandemic not only prevented the congregation from celebrating the Easter season together, it also meant that the anticipated St. Paul's 90<sup>th</sup> anniversary celebration scheduled for May 17, 2020 also had to be postponed until the congregation could gather together again safely.



