



The Backcountry Hut Company



Media Kit



## Background

The Backcountry Hut Company specializes in compact modernist recreational structures, crafted to rigorous standards, designed to leave a minimal impact on our environment. Our collection of prefabricated, flat-packed building systems help individuals and organizations turn dreams into destinations, and can be configured to meet a variety of uses, landscapes, and lifestyle needs.

Inspired by simplicity and the quest to provide outstanding design and value, our systems are developed with user participation in mind - with an emphasis on self-assembly and communal construction. The result is a prefabricated kit-of-parts building system that ships directly to site and can be assembled in a fraction of the time of a traditional construction process.

The Backcountry Hut Company was born from a deep appreciation of the outdoors and a desire to put down roots in the places we seek adventure.

Founded in 2015 in Vancouver, BC  
by Wilson Edgar + Michael Leckie

Manufactured in Courtenay, BC  
by Cascadianwoodtech

Currently shipping is available within North America.





The Backcountry Hut Company





## Systems

We offer three unique kit-of-parts systems designed to accommodate a flexible range of essentials, and be built with different levels of hands-on or professional support.

Prefabricated systems offer greater ease of assembly and projects can be completed in a fraction of the time. The modular designs are scalable, ranging in size from 107 to 3000 square feet.

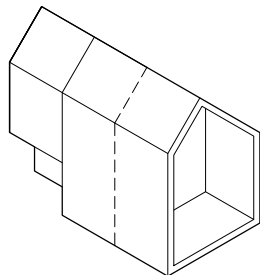
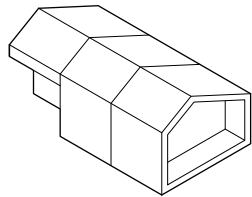
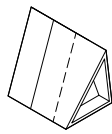
We designed each system to be user-friendly, offering opportunity for a hands-on approach in the configuration and construction process.

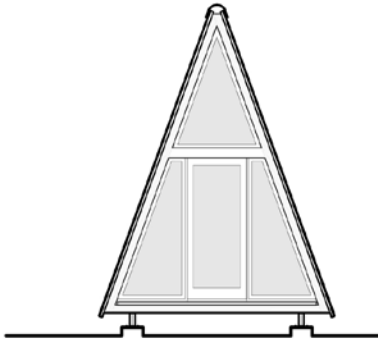
For more information, including floor plans, please download our catalogs:

[System 00](#)

[System 01](#)

[System 02](#)

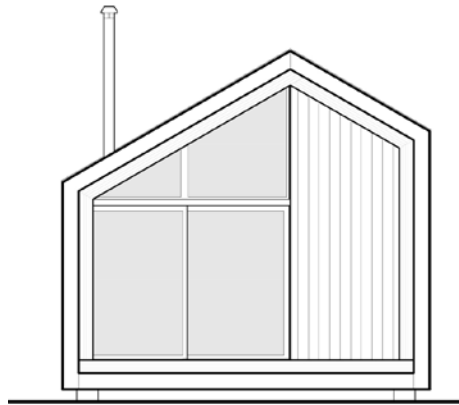




## System 00

Our smallest and most streamlined option, distills the iconic A-frame aesthetic down to its purest essentials. With a compact layout of approximately 10' x 10' at the ground level and a loft space above, it comes to life as a single bedroom sleeping bunk, or as a meditation, yoga, or art studio.

Priced at: \$29,500 CAD  
Build time: less than 1 week

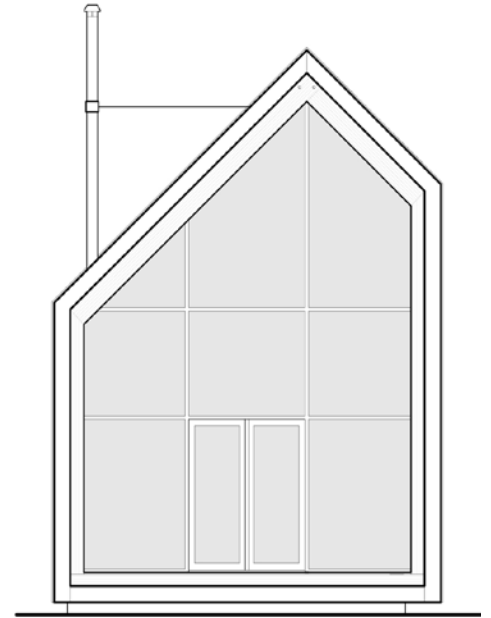


## System 01

Ground floor space is designed to encourage fluidity between indoor living and outdoor recreation, while the loft above offers options for sleeping or storage.

Based on an 18.5' x 10' floor plan module. Modules can be combined to create a wide range of flexible options.

Priced from: \$200 CAD / sq ft  
Build time: 1 week



## System 02

Our original concept was inspired by traditional alpine cabins. This system features a flexible floor plan option in a spacious two-storey cabin designed to accommodate larger groups or families. This system is based on a two-storey 18.5' x 10' floor plan module, which can be combined to create a wide range of flexible options.

Priced from: \$150 CAD / sq ft  
Build time: 2+ weeks



## Team

Our co-founders and principals, Wilson Edgar and Michael Leckie, are no strangers to adventure and the wild unknown.

Born east of the Rockies, they each migrated their way out West on different paths, following the seasons and chasing adventure in the mountains and along the coast. Wilson's experience with the outdoor community in the Pacific Northwest and Michael's background in creating award-winning modernist architecture led to the development of the first prototype Backcountry Huts, with the goal of creating a prefabricated modular shelter that combined practical utility and a minimalist aesthetic.

As development progressed, the team reached out to Vancouver-Island based Cyrill Werlen, a master builder originally from Switzerland, who brought his appreciation for quality wood construction and the concept of self-assembly to the project.



# The Backcountry Hut Company



## **Wilson Edgar**

Wilson is a life-long lover of the great outdoors and an active contributor in the outdoor enthusiast community.

Wilson developed the initial concept of The Backcountry Hut Company as a solution to the demand for exceptionally designed recreational shelters.



## **Michael Leckie**

Michael is a registered Architect in the province of British Columbia, and Principal at Leckie Studio, an award-winning multi-disciplinary design practice based in Vancouver.

His deep appreciation for the outdoors, and hands-on approach to design led him to collaborate with Wilson in co-founding The Backcountry Hut Company.



## **Cyrill Werlen**

Cyrill has a deep knowledge of woodworking and brings a solid background project management through immersive experiences in the industry in Switzerland.

He founded Cascadian Wood Tech on in 2015 with a focus on developing enduring high-quality wood-based structures, and joined The Backcountry Hut Company as manufacturing partner.



The Backcountry Hut Company

**AZURE**



**ūncrate**



**Gray**

**MOUNTAIN  
LIFE** LIVE IT UP

## Recent Mentions

We're happy to share recent media coverage featuring The Backcountry Hut Company! Learn more about what other design + outdoors lovers are saying about us by clicking through some of our current favourites, or visit our website for more.





## Press Inquiries

If you're interested in helping to tell our story, reach out and say hello! We're always happy to share our story with those who love architecture, the outdoors, and cabin life, and we can answer any questions you may have about our product, process, and the industry.

### Media Contact

Wilson Edgar, Co-Founder / Principal  
[Email](#) or call 604.355.7797

Find us on Instagram at  
[@thebackcountryhutcompany](#)

You can also browse our [image gallery](#) for a selection of images and photos that are available for editorial use by press agencies, journalists, and students.

Please note credit to 'The Backcountry Hut Company' in print and digital publications, or tag us at [@thebackcountryhutcompany](#) on social media, for each use. Commercial use of these materials is strictly prohibited.





@thebackcountryhutcompany