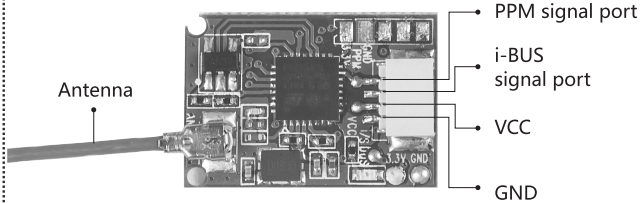


### 产品介绍 Introduction

FS-A8S是一款专用于多旋翼飞机的单向接收机，采用了AFHDS 2A（第二代增强版自动跳频数字系统）。它体积小巧便于安装，可输出标准PPM信号和18个通道的i-BUS信号。

The FS-A8S is a compact 1-way receiver designed for multi-rotor aircraft. It uses the AFHDS 2A (Automatic Frequency Hopping Digital System) protocol, supports standard PPM output and has i-BUS support for up to 18 channels.

### 接收机概览 Receiver overview



### 接口 Ports

用于连接接收机与模型的各个部件。

PPM信号接口：输出标准的PPM信号。

i-BUS信号接口：用于输出i-BUS信号，最多可支持18个通道。

These ports are for connecting the receiver to various models and flight controllers.

PPM signal port: Outputs standard PPM signal.

i-BUS signal port: Outputs i-BUS signal, up to 18 channels.

### 对码 Binding

1. 将发射机进入对码状态；（发射机进入对码状态的方式可能不同，请根据发射机的使用说明书进行操作）
2. 按住接收机上的对码按键，并为接收机连接电源。接收机上的指示灯快闪表示接收机进入对码状态；
  - 对码成功后，接收机状态指示灯由快速闪烁变为慢速闪烁。
3. 将发射机手动退出对码界面，此时接收机状态指示灯变为常亮。
4. 检查发射机、接收机、模型是否正常工作。如有异常，重复以上步骤重新对码。

1. For information on putting the transmitter into bind mode please refer to the transmitters user manual.
2. Power on the receiver while holding the bind button. If the receiver's LED is flashing this means it has entered bind mode.
  - If binding is successful the receiver's LED will begin to flash slower.
3. On the transmitter, manually exit the binding menu. Once you have exited the bind menu the receiver's LED will stop flashing and remain solid.
4. Check to make sure the model and receiver work as expected. If anything does not work as correctly, restart this procedure from the beginning.

### ⚠️ 注意事项：

- 使用前必须确保本产品与模型安装正确，否则可能导致模型发生严重损坏。
- 准备过程中，请勿连接接收机电源，避免造成不必要的损失。
- 确保接收机安装在远离电机、电子调速器或电气噪声过多的区域。
- 接收机天线需远离导电材料，例如金属棒和碳物质。为了避免影响正常工作，请确保接收机和导电材料之间至少有1厘米以上的距离。
- 关闭时，请务必先关闭接收机电源，然后关闭发射机。如果关闭发射机电源时接收机仍然在工作，将有可能导致遥控设备失控或者引擎继续工作而引发事故。

### ⚠️ Attention:

- Make sure the product is properly installed in your model. Failure to do so may result in serious injury.
- Do not power on the receiver during the setup process to prevent loss of control.
- Make sure the receiver is mounted away from motors, electronic speed controllers or any device that emits excessive electrical noise.
- Keep the receiver's antenna away from conductive materials such as carbon or metal. To ensure normal function make sure there is a gap of at least 1cm between the antenna and the conductive material.
- Make sure to disconnect the receiver battery before turning off the transmitter. Failure to do so may lead to unintended operation and cause an accident.

### 产品规格 Product specification

- ▶ 通道个数：8个（PPM），18个（i-BUS）
- ▶ 适用机型：多轴飞行器
- ▶ 频率范围：2.408-2.475GHz
- ▶ 波段宽度：500KHz
- ▶ 波段个数：135个
- ▶ 发射功率：无
- ▶ 接收灵敏度：-92dBm
- ▶ 2.4GHz模式：第二代增强版自动跳频数字系统
- ▶ 调制方式：GFSK
- ▶ 低电压报警：无
- ▶ 数据输出：PPM/i-BUS
- ▶ 充电接口：无
- ▶ 天线长度：26mm（不带铜管）
- ▶ 输入电源：4.0~8.4V
- ▶ 在线更新：无
- ▶ 空旷无干扰地面距离（发射接收距地面1米）：大于300m
- ▶ 工作电流：40mA
- ▶ 通道延时：<15ms
- ▶ 外形尺寸：20×14×5.3mm
- ▶ 机身重量：1.2g
- ▶ 安规认证：CE0678，FCC

- ▶ Channels: 8 (PPM), 18 (i-BUS)
- ▶ Model type: Multi-rotor
- ▶ RF range: 2.408-2.475GHz
- ▶ Bandwidth: 500KHz
- ▶ RF channel: 135
- ▶ RF power: None
- ▶ RX sensitivity: -92dBm
- ▶ 2.4GHz system: AFHDS 2A
- ▶ Modulation type: GFSK
- ▶ Low voltage alarm: None
- ▶ DSC port: PPM/i-BUS
- ▶ Chargeable: None
- ▶ Antenna length: 26mm (Not including brass contacts)
- ▶ Power input: 4.0~8.4V
- ▶ On-line update: None
- ▶ No ground interference (Transmitting and receiving 1m from the ground): >300m
- ▶ Operating current: 40mA
- ▶ Channel delay: <15ms
- ▶ Size: 20×14×5.3mm
- ▶ Weight: 1.2g
- ▶ Certificate: CE0678, FCC