

Master Gardener Newsletter



WSU EXTENSION
Cowlitz County



AUGUST 2022
304 COWLITZ WAY,
KELSO, WA 98626

REFLECTIONS FROM THE GARDEN

Gary Fredricks

WSU Extension Office
Phone: 360-577-3014
Gary Fredricks, WSU
Cowlitz County
Extension Director,
360-577-3014 Extension 3
E-mail: garyf@wsu.edu
Georgianna Jessop
Administrative Secretary
360-577-3014 Extension 0
JessopG@cowlitzwa.gov

WSU Gardening Websites
mastergardener.wsu.edu/
gardening.wsu.edu
cowlitz.wsu.edu

HortSense Fact Sheets
hortsense.cahnrs.wsu.edu/

PestSense Fact Sheets
pestsense.cahnrs.wsu.edu/

Pest Leaflet Series
[puyallup.wsu.edu/plantclinic/
pls/](http://puyallup.wsu.edu/plantclinic/pls/)

WSU Educational Materials
<http://pubs.wsu.edu>

WSU Master Gardener
www.cowlitzcomg.com/

Reasonable accommodations will be made for persons with disabilities and special needs who contact the office at least two weeks prior to the event. Extension programs and employment are available to all without discrimination. Evidence of noncompliance may be reported through your local Extension office.

What do you do?

“If you really want to do something, you will find a way. If you don’t, you will find an excuse.” ~ Jim Rohn

Darn! It seemed like just yesterday that I got a haircut and already you can’t see the top of my ears. I should be happy that it is thick and not just skin like my brother. So once in the barber’s chair, someone will begin cutting and starts up a conversation. “What do you do?” “I work for WSU Extension.” (Silence!) “Oh yeah, you work on that campus in Vancouver.” “No, I work at the WSU Extension office here in Kelso” (Silence coupled with deer in the headlights look!) “So what do you do?”

I can take the easy way and speak. “WSU Extension does the 4-H and MG programs.” That usually connects some dots, but it does not really tell them about all the great things you do. Therefore, I tell them about different types of program MG offer, service projects, volunteer opportunities, workshops presented, etc. At that point, they stop asking questions and just cut my hair.

Whether or not you know it, you are a representative for Washington State University. Whenever you wear a WSU MG badge, whether gardening at the demo garden or helping at an event, there are people that are listening to you. Many people say they are Master Gardeners, but it is being WSU trained that certifies a WSU MG. This title commands a high level of respect and trust. The WSU MG program here has a proud heritage of community service.

My challenge to you is to go to the next level. Do you tell people about what public service the Master Gardener has given this county? In a program, do you mention that you are a **WSU Master Gardener** and the benefits you have gotten from being a part of this organization? Do you invite people to join? Do you tell people how WSU Master Gardeners serves our state as well as their local community? Can you tell people about the other programs that WSU Extension has to offer? Please spread the word about who we are and what we do. Do you send me their name and E-mail address, so they are added to the workshop announcement list. Thanks to many of you I already have a list of 36 people interested in taking WSU MG training in 2023.

I often hear comments on the outstanding contributions of the WSU Master Gardeners in Cowlitz County. It is great to be a part of this wonderful organization that has helped so many people. Thank you for the service you give this community.

Announcements

Plant and Insect Clinic is open!

In-clinic visits, calls, and emails. In office April-Oct:
MWF, Nov-March: Wed. only, 10-noon. 360-577-3014
Ext. 1

All of our workshops-with slides, handouts, and videos:
cowlitzcomg.com/workshops-videos

In this issue

**If you enjoy the MG articles below,
PLEASE LET THE AUTHOR KNOW!**

- ◆ [Reflections from the Garden](#) Gary Fredricks
- ◆ [It's Fair Time--We did good!!](#)
- ◆ [Log Cabin display at Fair](#)
- ◆ [Did you know--](#) Phyllis Collins
- ◆ [Story from Raised Bed Winner](#)
- ◆ [Just noticed!](#) Jerry Winchell
- ◆ [Summer in the Demo Garden](#)—Jenny Sorensen
- ◆ [Tour Mt. St. Helens Visitor Center](#) —Wendy Santiago
- ◆ [Outdoor Spaces](#)—Kathy Wilson
- ◆ [New DG Hugelkultur Bed Sign](#)
- ◆ [Getting Ripe Tomatoes](#)-Alice Slusher
- ◆ [When to pick your veggies](#) Art Fuller's talk
- ◆ [July/August Foundation Mtg. Minutes](#)

Log your Volunteer Hours



wsu.givepulse.com/group/453100-WSU-Cowlitz-County-Master-Gardeners

wsu.givepulse.com/group/453100-WSU-Cowlitz-County-Master-Gardeners

- Article Opportunity -

If you specialize in a specific type of gardening, then why not share your knowledge by writing a short article for the newsletter? It's a great way to contribute, and help inspire fellow gardeners. Not to mention that the time spent writing can be turned in as volunteer hours!

If you have an article you'd like to share, please email them to: Alice Slusher, alslush@gmail.com
Articles for September issue due September, 2022

Meetings & Event

Foundation Meeting

Sept 13, 2022
Location to be announced



**MASTER
GARDENER
CALENDAR**

Upcoming Workshops (Tues. 12 pm on Zoom unless otherwise noted)

cowlitzcomg.com/public-events

Aug 16	Food Preservation--the Basics	WSU Master Food Preserver-Greg Lassila
Aug 23	Seed Saving	Alice Slusher
Aug 30	Extending the Garden Season	Art Fuller
Sept 6	Deer Resistant Plants	Michele Thomas
Sept 10 In-person	Home and Leisure Show Fairground Event Center	MG Topics and Speakers
Sept 11 In-person	Home and Leisure Show Fairground Event Center	MG Topics and Speakers
Sept 13	Growing Garlic	Billie Bevers
Sept 20	Putting the garden to bed	Art Fuller
Sept 27	Moles	Bryan Iverson

**Master Gardener
Directory**

On members' page of website

COWLITZ COUNTY FAIR JULY 27-30

THEME: Let the Good Times Grow

Thank you to everyone who helped with getting our building looking good, decorated and “postered,” helping with the flowers, prepared mini-classes and kid’s activities, helped to host the floral building, and cleaned up afterwards during one of the longest heatwaves ever for Fair time!

We had a chance to get to know each other, renew old friendships and make new ones. A very special thank you goes out to our 2022 MG class—it was so

good working and playing with you! We greeted and talked to over 2500 visitors, engaged many of them by asking and answering questions, and we signed up 21 new people for Gary’s workshop notification list. We also explained what our Master Gardener program was and signed up 10 possible recruits for the 2022 class!

If anyone took any photos during Fair, please up-



Jenny Sorensen and Marge Nunnelley worked with the Cowlitz County Historical Museum to create a lovely rustic abeau in the log cabin next to the Floral Building. It was just perfect for the homey setting. The museum folks were just thrilled with it! Jenny says she's already got some ideas for next year's Fair!



Did you know—Phyllis Collins What are Hardiness Zones?

Hardiness zones are different climate areas across the continent

They are determined by :

- (1) Temperature
- (2) Humidity
- (3). Elevation and Season

There are 13 different zones within the US. To some degree these follow a north to south logic but a few areas don't fit into the longitudinal norms. Washington state lies in zones 6n 7 also 8n 9 for some perennials

The hardiness zones are for planting perennials not annuals.

However if there is a significant difference between zones you might see no growth at all, or the plant won't bloom until the very end of the growing season.

Why choose perennials??



Perennials are an excellent choice for sustainable gardening because they only need to be planted one time.

Perennials help the soil grow stronger by encouraging organic growth and ecosystem of insect and plant matter and maintaining the prosperity of the ground. Perennial vegetables often have beautiful flowers as well as making them attractive features in your garden .

Some perennials:

- Kale
- Garlic
- Day Lillies
- Fennel
- Horseradish
- Rhubarb
- Strawberries
- Spinach (not all)
- Sweet potatoes (some)

So now you know!

Source: allaboutgardening.com/perennial-vegetables/

HOME VEG RAISED BED PROJECT

Have you wondered if what we do makes a difference?

From Raised Bed Home VEG winner, Donna McNew

As you might notice, we are a little unorthodox and thrifty. We have used file drawers for extra planters. To add height for our climbers, we used framing from a wind damaged portable garage. Since we have many deer who think that anything I plant is strictly for their enjoyment, we added an unused dog kennel for more garden area.



The hog panel atop the main garden did keep the chickens from scratching, but not eating the kale. We added netting to the hog panel fencing so they cannot enter the garden at all now.



JUST NOTICED

Jerry Winchell

Is there anybody else out there that feels life shaking? Aside from the usual pandemic and climate doom, wars and genocide, have you noticed that anyone who disagrees is often cast as an “enemy” or an “idiot?” Love, respect, and peace have been fading in homes and communities.

Have you also noticed that:

In Master Gardeners, we help each other and our community

We can still respect people who disagree

We're happiest when we are working together to make something cool happen (e.g., the Plant Sale...)

We enjoy being together though we're very diverse?

“Master Gardeners” is a special place where we

have fun building each other and our community. Congratulations! Our community is happier and more significant because of **YOU**...AND we help hold each other together when life is shaking.



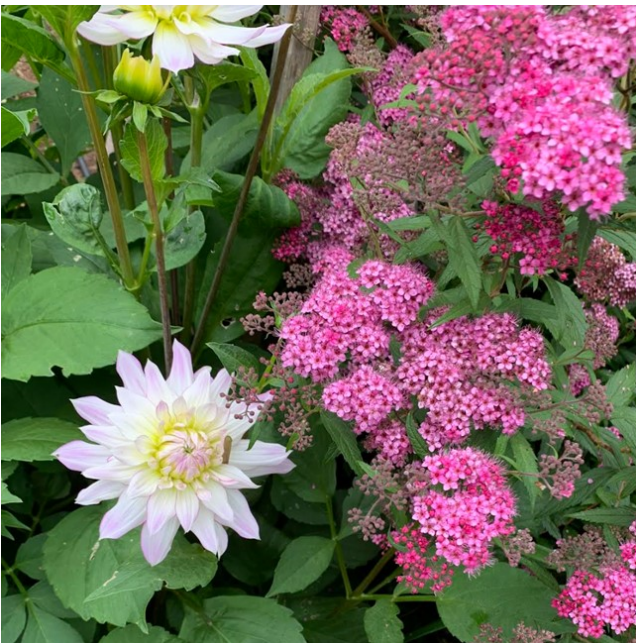
CONGRATULATIONS

Our community is happier and more significant because of **YOU**...

AND we help hold each other together when life is shaking.

Summer in the Demo Garden!

Photos from Jenny Sorensen



Our first Dahlia



DG Kitty hard at work wrapping himself in the blueberry netting



MOUNT ST. HELENS VISITOR CENTER

Wendy Santiago

Master Gardeners Wendy Santiago and Pam Starnes, with help from Dixie Edwards, have been working to beautify this area and turn it into a stunning educational native garden. The visitor center is now open—so many closures during COVID.

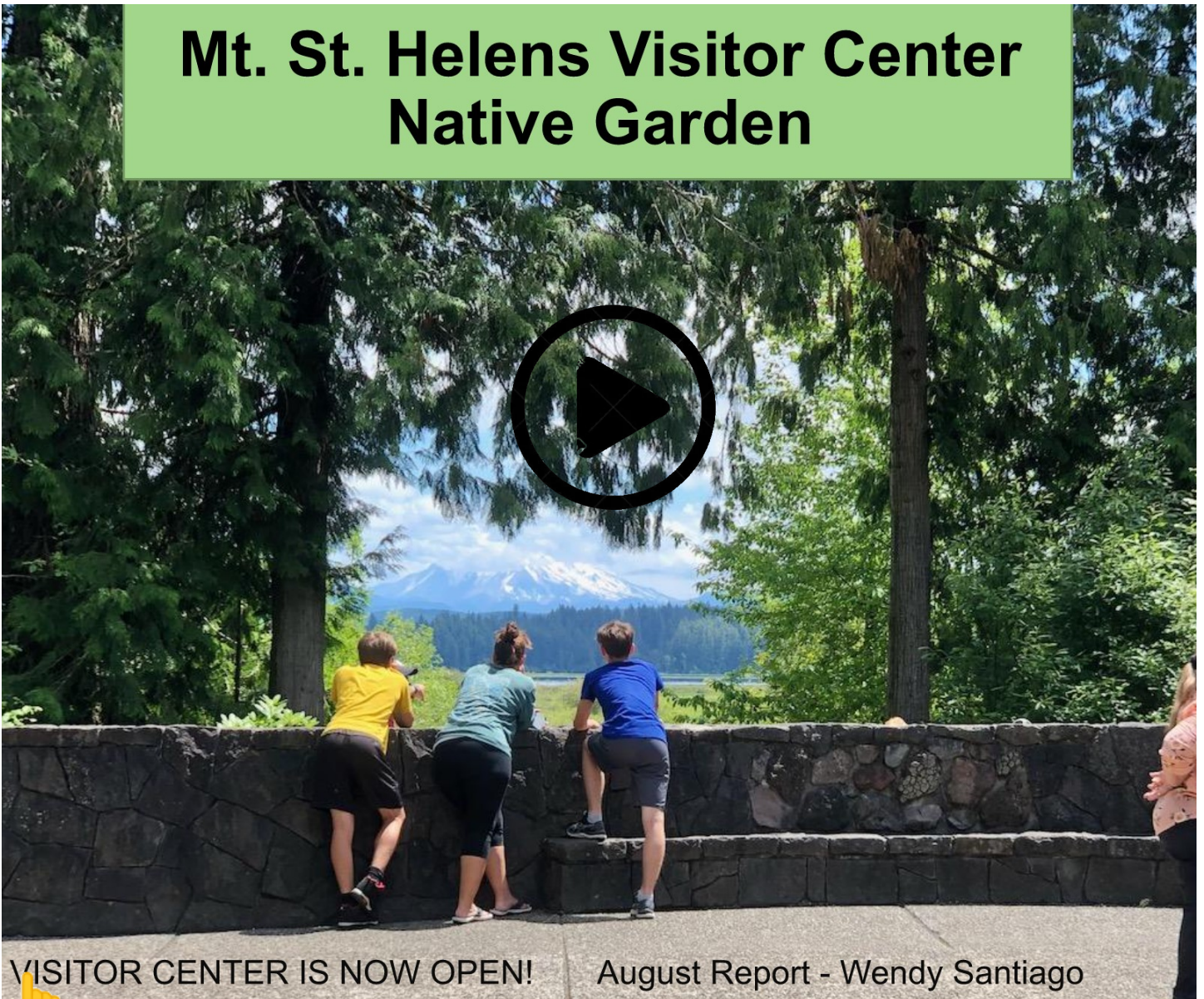
Wendy has assembled a pictorial guide through the seasons. It's just stunning! Click on the photo below to see the online

album. Wendy and Pam meet at the garden and would love to have you join them. This is a great way to get to know other MGS and for our 2022 interns get some volunteer hours!

Contact Wendy to find out when the next garden day is! wsantiago@weslandarch.com

How to get there? Take Exit 49 (SR 504-Spirit Lake Highway), then drive east for 19 miles. The visitor center is on the right.

Mt. St. Helens Visitor Center Native Garden



VISITOR CENTER IS NOW OPEN!

August Report - Wendy Santiago



OUTDOOR SPACES

Kathy Wilson

After months of rain slickers and boots now Mother Nature is testing us with high temps giving us yet another challenge. During the pandemic months especially, when most of us were required to work from home and travel was restricted, we turned to our outdoor spaces for solace and relaxation. Do you have a special place in your garden that you can escape to for a quiet moment of reflection or a well deserved glass of wine?

For those of us who are fortunate enough to have a porch, patio or balcony we have the basics for an outdoor space to escape to. But, if not, creating an outdoor sanctuary can be as simple as a comfy chair, protection from the sun and a place to set a drink glass.

The first step in establishing a quiet retreat is to evaluate your space. How do you want to use the space? Is this a private spot to curl up with a good book or do you plan to entertain in this space? Do you have an amazing view or are you looking at the neighbor's house? Do you need privacy or are you secluded?

The number one concern is protection from the sun. This can be accomplished by selecting an area under the canopy of trees, or installing a shade sail or umbrella. Of course, you could build an overhead structure such as a pergola if time and finances allow. A row of tall plantings in pots, a group of hanging baskets or a trellis with living plants can establish a screen for privacy. Providing a light source can be as uncomplicated as a solar powered lantern or string lights if an electrical outlet is close by. A fire pit is a great source of heat for cool evenings and a fairly simple DIY project to build.

The location of your outdoor



space is important if you plan to entertain and serve food and drinks. It should be a reasonable distance to and from your kitchen. There should also be an aesthetic connection between your home and outdoor space. Coloring in plantings or furnishings can provide the correlation of the two spaces. A quick and cost effective option for this would be to purchase soft goods such as pillows or throws in a coordinating color



OUTDOOR SPACES

Kathy Wilson

scheme or pattern. Dual purpose furniture items, such as an ottoman with storage, can save space and serve as a surface for drinks and snacks. There are numerous outdoor furniture options, but upkeep and storage are issues to consider when shopping for furniture. Aluminum items are light weight, but if you have a windy location they could become flying objects very quickly. Outdoor fabrics that are sun resistant and washable are excellent choices for cushions on furniture. Less upkeep means more time to



Waterproof adhesive bandages— Hint for Active MGs

I recently discovered these AMAZING bandages at Walgreens...so thought our group might be interested. If you need a bandage that STAYS ON and is truly WATERPROOF...give these a try. Mine was on for 5 days, (I finally peeled it off). I went swimming 5 times and took 6 showers during that time. Never had a bandage that could handle that. It seems to breathe also—doesn't stay damp underneath.

Warning though... these aren't easy to unwrap the protective papers from though, especially when you're bleeding.

Trisha B.



READ ALL ABOUT IT!

It's a sign of things to come!



Have you seen the new sign at the Demo Garden? It's the first in a series of signs that Carolyn Winchell and the DG team are placing there to provide some educational outreach to our visitors.

The sign at the Hugelkultur bed is in memory of our always friendly and smiling MG Ted Cunningham, who was the driving force behind it.

The sign was a cooperative effort among several MGs, as most things are. Carolyn and Alice design the durable metal sign, Jerry and Art put together the sturdy stand and protective cover. The sign is securely planted in enough concrete to (hopefully) prevent it from growing legs and walking away.

If you haven't seen it yet, stop by. The Demo Garden is at its most beautiful right now!

The next sign is about Espalier! Watch for it in the next few weeks!



How To Get A Red Tomato--on the vine

- Any fruit that hasn't set by the end of August won't ripen.
- Cut off all blossoms and growing tip of each plant to the first node
- Remove most of the leaves
- From bottom up
- If very hot weather expected, keep leaves that shade tomatoes
- Better circulation helps prevent late blight
- Plant's energy focuses on ripening fruit
- Water sparingly, but don't let plants wilt.
- Too dry: blossom end rot



How To Get A Red Tomato--OFF the vine

- Harvest largest, unblemished, mature green tomatoes, wipe clean
- Reasonable size and color turning lighter
- Clip stem close to fruit
- Place in open cardboard box
- Room temperature—70 degrees
- Check for spoiled fruit
- Should ripen in around 14 days
- Others swear by pulling out the tomato plant and hanging it in a 70 degree location to ripen on the vine.



To see more timely tips for SW Washington, visit our [“Looking Ahead” series](#) on our website

Resources

[Ripening Tomatoes Indoors](#)

[Tomatoes for Home Gardens](#)

[How to Ripen Green Tomatoes](#)



HARVESTING VEGETABLES-WHEN TO PICK

Who knew? Art's here to tell ya!

We're pretty good at *GROWING* our vegetable gardens, but sometimes it's confusing when to harvest our crops! If you missed **Art's talk** about when to harvest your garden vegetables, be sure to see the **video, slides, and handouts on our website.** cowlitzcomg.com/vegetable-gardening The list below is just a "teaser!"

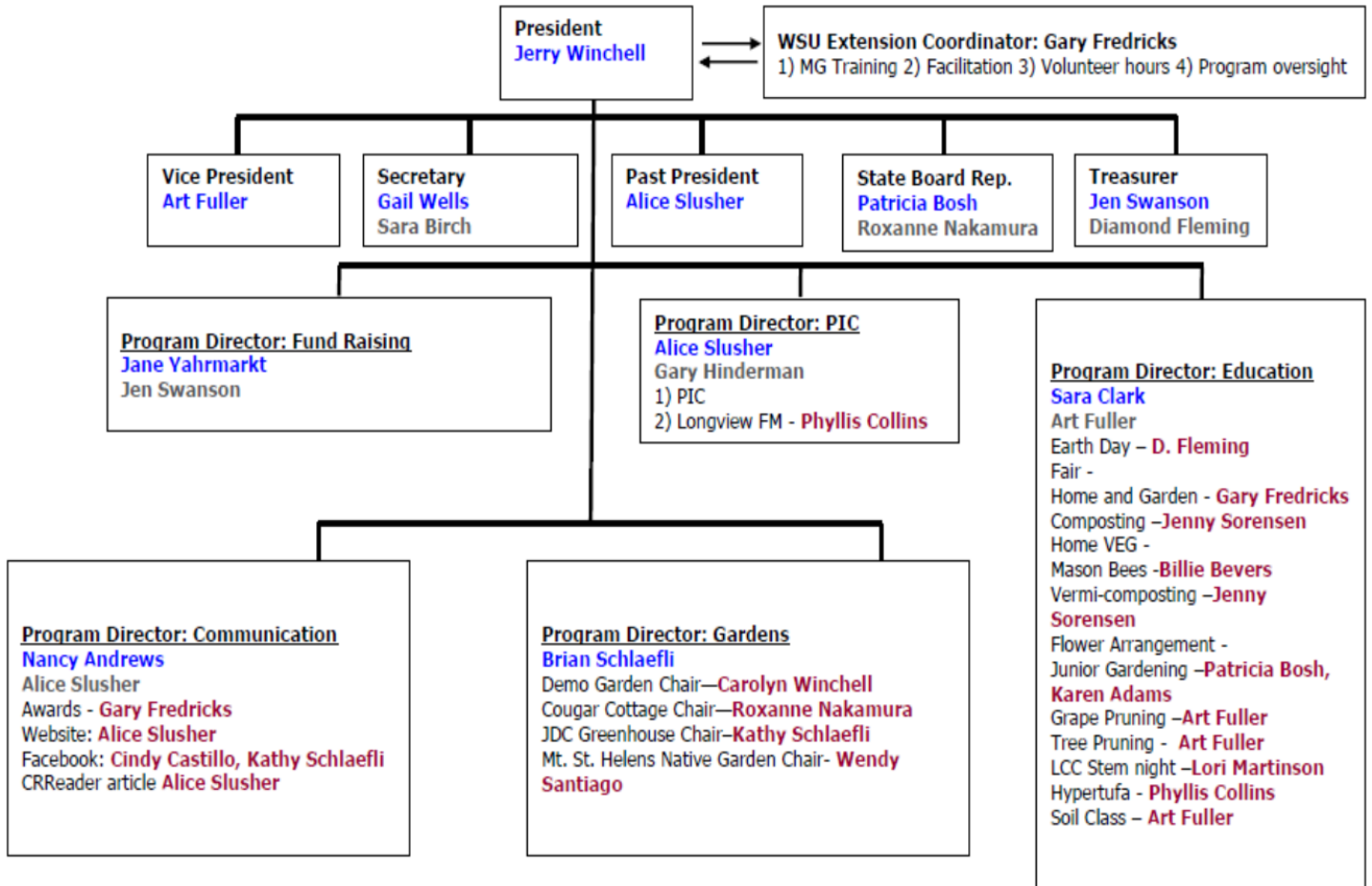
Vegetable	Days to Ma-	Size	Color	Comment
Beet	50-70	2-3 in diameter	red, varies with cultivar	Up to 1/3 of the beet foliage can
Broccoli	50-65*	6 to 7 across	blue-green	Harvest before yellow flower
Cabbage	60-90*	varies with cultivar	green, red	Harvest when heads are large
Carrot	60-80	3/4 in diameter	orange	Harvest when orange shoulder
Cauliflower	55-80*	6 to 8 across	creamy white	Blanch heads when 2-3 across by
Cucumber, Pickling	55-65	2-4 long	dark green	Harvest plants every 2 to 3 days,
Cucumber, Slicing	55-65	6-8 long	dark green	1 to 2 diameter, harvest plants
Eggplant	75-90*	varies with cultivar	purple, white, green	Fruit should have shiny finish.
Garlic	90**	2-3	white, reddish purple	Harvest when foliage topples
Kohlrabi	55-70	2-3 diameter	green	Store with leaves and roots re-
Lettuce (leaf)	45-60	4-6 long	green	Harvest outer leaves, hot weath-
Muskmelon Canta-	75-100	5-10 in diameter	yellow-tan between netting	When mature, stem separates
Okra	50-65	3 long	bright green	Harvest frequently to maintain
Onion	100-120 90-	varies with cultivar	white, yellow, red	Harvest when tops fall over and
Parsnip	110-130	8-18" long	white or cream	Can be overwintered in the
Peas, Snow (Sugar)	55-85	3 long pods	bright green	Harvest when pods are long and
Peas, Snap	55-85	3 long pods	bright green	Pick when seeds are nearly full
Peas, Garden (Shell)	55-85	3 long pods	bright green	Harvest when peas are full size.
Pepper, Hot	60-90*	1 to 3 long	red, purple, yellow, green	Use gloves when harvesting.
Pepper, Sweet	70-90*	2 to 4 in diameter	green, red, yellow, purple,	Usually harvested when green,
Potato	90-120	varies with cultivar	varies with cultivar	Dig when tops turn brown and
Pumpkin	85-120	varies with cultivar	orange	Harvest when uniformly orange,
Radish, Spring	25-40	1/2 to 2 in diameter	red, white, varies	Radishes larger than 2 in diame-
Radish, Winter	45-70	6-12 long	white, varies	Can be left in the ground until
Snap Bean, Green	50-70	4 to 6 long	green, yellow, purple	Harvest when pods are pencil
Spinach	45-60	6-8 tall	green	Harvest the entire crop when
Summer squash,	50-60	3 to 5 in diameter	yellow, green	Harvest when skin is soft.
Summer squash,	50-60	6 to 12 long	green, yellow	Harvest every 2 to 3 days when
Sweet Corn	70-105	5 to 10 , varies with cultivar	yellow, white, bicolor	Mature kernels exude milky sap
Sweet Potato	100-125	varies with cultivar	Gold or orange	Harvest just before or after a
Tomato	70-90*	varies with cultivar	red, orange, yellow	Harvest fully ripe for best flavor.
Turnip	45-70	2-3 in diameter	white, reddish purple	Foliage can be harvested for
Watermelon	80-100	varies with cultivar	light to dark green, striped	Harvest when 'belly' turns from
Winter Squash	85-120	varies with cultivar	varies with cultivar	Rind should be hard and difficult



MEETING MINUTES

July Foundation Meeting Minutes August Foundation Meeting Minutes

Cowlitz County Master Gardener 2022 Foundation Board



Foundation Officer
Alternate
Program Chair

